

AMERICAN  
**FINE ART**  
M A G A Z I N E

ISSUE 20

MAR/APR 2015



## AUCTION REPORTS: ALAMEDA, BOSTON, HILLSBOROUGH, MESA, NEW YORK, SANTA FE



Andrew Wyeth (1917–2009), *Grey Light*. Watercolor on paper, 16¼ x 28¾ in., signed lower right and lower left: 'Andrew Wyeth'; verso with watercolor study; matted and framed under glass. Courtesy Leland Little Auction & Estate Sales, Ltd. **Estimate: \$40/80,000**  
**SOLD: \$40,000**

### HILLSBOROUGH LELAND LITTLE AUCTION & ESTATE SALES LTD.

DECEMBER 4<sup>TH</sup>–6<sup>TH</sup>  
*Winter Catalogue Auction*  
\$1.65 million

December 4 to 6 was the *Winter Catalogue Auction* at Leland Little Auction & Estate Sales Ltd., highlighted by five sessions, including its Saturday focus on Fine & Decorative Arts. Leading the American painting segment were 20<sup>th</sup>-century works, one of which was Andrew Wyeth's *Grey Light*. The watercolor, which was once part of the *Exhibition for Finnish Relief* sponsored by the New York City Mayor's Committee for Finnish Relief and assembled by 19 galleries, earned its low presale estimate of \$40,000. Another notable work was Ernest Trova's chrome-plated bronze *Study / Falling Man*, that sold for \$29,000, within its presale estimate of \$20,000 to \$40,000.

The *Winter Catalogue Auction* had participation from in-house buyers, more than 3,000 telephone and

absentee bids, and 1,000 approved Internet bidders. In all, the sale garnered more than \$1.65 million.

### SANTA FE SANTA FE ART AUCTION

DECEMBER 6<sup>TH</sup>  
\$2.1 million

With a trifecta of artist records and surging sales, *Santa Fe Art Auction* generated more than \$2.1 million. Taking the top honors was Carl Rungius' *Pack Horses on a Trail*, which fell within its presale estimate at \$333,450. The second highest earner was Frederic Remington's bronze *The Cheyenne*, which sold for \$198,900—a number that nearly reached its high presale estimate of \$200,000. Rounding out the top three was Eanger Irving Couse's *Spearing the Fish* (est. \$150/250,000) that drew \$175,500.

All three record breakers came during the first half of the auction, beginning with modernist Willard Nash's *Santa Fe Landscape* that sold for well above its high presale estimate of \$100,000, achieving \$140,400. Russell



Willard Nash (1898–1942), *Santa Fe Landscape*, ca. 1930. Oil on canvas, 19½ x 23½ in. Courtesy Santa Fe Art Auction. **Estimate: \$60/100,000**  
**SOLD: \$140,400**

Vernon Hunter's *The Windmill* achieved twice its high estimate at \$18,720, and Peter Hurd's tempera *The Fence Builders* drew \$70,200.



Charles M. Russell (1864–1926), *The Horse Wrangler*. Bronze, 13½ x 13 x 8 in. Courtesy Altermann Galleries & Auctioneers. **Estimate: \$175/250,000** **SOLD: \$264,000**

### SANTA FE ALTERMANN GALLERIES & AUCTIONEERS DECEMBER 6<sup>TH</sup>–7<sup>TH</sup> *December Auction* \$1.8 million

When Altermann Galleries & Auctioneers landed the Charles M. Russell bronze *The Horse Wrangler* for its December sale in Santa Fe, New Mexico, they knew they had a unique piece on their hands. Interest for the bronze swelled when 16 castings of the work were located by researchers—12 belong to major museum and cultural institutions, leaving only four in private hands, including the one at auction. *The Horse Wrangler* sold for \$264,000, above its \$250,000 high presale estimate. It was the top lot of the sale, which

had a two-day total of \$1.8 million.

Another top seller was Oscar Berninghaus' *First Snow on Taos Mountain*, which sold within estimate at \$108,000. Six pieces by Frank McCarthy also hit the block, including *Renegade Apaches*, which brought \$29,400. Landscape painter Eric Sloane also had multiple works in the sale, including *The Lonely Farm*, which came in within estimate at \$10,200.

### ALAMEDA MICHAAN'S AUCTIONS

DECEMBER 8<sup>TH</sup>  
*Fine Art, Furniture,  
Decorative Arts and  
Jewelry Auction*

On December 8, Michaan's Auctions hosted its *Fine Art, Furniture, Decorative Arts and Jewelry Auction*, which boasted fine art highlights of California art and 20<sup>th</sup>-century prints. Among the notable works were two woodblocks by Gustave Baumann, with his piece *Procession* earning



Mel Ramos (b. 1935), *Greek Architecture*. Oil on canvas, 60 x 52 in., gallery and exhibition labels verso. Courtesy Michaan's Auctions. **Estimate: \$10/12,000**  
**SOLD: \$15,340**

\$12,980 over its presale estimate of \$8,000 to \$10,000. The artist's other work, *Spring New Mexico*, landed at \$10,620.

In California art, Mel Ramos' oil on canvas *Greek Architecture* captured attention with buyers, coming in at \$15,340, a number that reached above its estimated \$10,000 to \$12,000.

## BOSTON

### GROGAN & COMPANY

DECEMBER 14<sup>TH</sup>

*The December Auction*  
\$1.5 million

December 14, Grogan & Company hosted its inaugural auction at its new Boston location to standing-room only



Birger Sandzén (1871-1954), *Colorado Pines*, 1929. Watercolor on paper, 21 $\frac{3}{4}$  x 26 $\frac{1}{2}$  in., signed lower right. Courtesy Grogan & Company. **Estimate: \$8/12,000**  
**SOLD: \$15,600**

crowds. The auction, which featured 545 lots of fine art, jewelry, silver, decorative arts, and Oriental carpets, achieved approximately \$1.5 million in sales. Of note was Birger Sandzén's *Colorado Pines*. The painting was estimated at \$8,000 to \$12,000, but exceeded expectations when it sold for \$15,600. Also of interest was the Carrara marble sculpture *Standing Female Nude with Cornucopia* by Larkin Goldsmith Mead, that sold for \$9,600, over its presale estimate of \$6,000 to \$8,000.

## NEW YORK

### SWANN AUCTION GALLERIES

JANUARY 22<sup>ND</sup>

*Illustration Art*  
\$557,078

Swann Auction Galleries' earned \$557,078 in its *Illustration Art* auction on January 22, with Saul Steinberg's *Equivalent of 8*,



Norman Rockwell (1894-1978), *Child Reading by Lamp Light*, ca. 1926. Graphite on paper mounted on card, 11 x 9 $\frac{1}{4}$  in. Courtesy Swann Auction Galleries. **Estimate: \$18/25,000**  
**SOLD: \$16,875**

leading the day at \$20,000. The second highest earner was Norman Rockwell's *Child Reading by Lamp Light* that came in just below presale estimate at \$16,875. Aubrey Beardsley's *A Young Tough* pen and ink, circa 1890s, was the day's third highest lot, coming in at \$13,750, an auction record in this medium for the artist. Susan Beatrice Pearse made waves with her 1913 mixed media piece *Dreamland*; it became an auction record for the artist at \$13,125.

## BOSTON

### SKINNER, INC.

JANUARY 23<sup>RD</sup>

*American & European Works of Art*  
\$1.7 million

Skinner, Inc.'s *American & European Works of Art* sale on January 23 achieved more

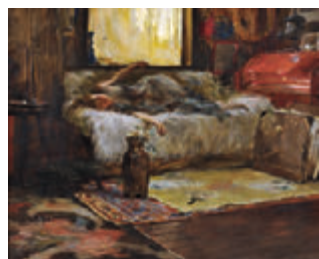
than \$1,695,286 in sales, with the top two earning works by Georgia O'Keeffe and Irving Ramsey Wiles.

"The market is hot for works of the highest quality that are fresh; works that epitomize the height of an artist's abilities," says Robin Starr, vice president and director of American & European Works of Art at Skinner. "The Georgia O'Keeffe drawing—one of her rare Bermuda sketches—the Isenbrant, and the Irving Ramsey Wiles all skyrocketed and ultimately blew away their estimates."

O'Keeffe's work *Banyan Tree with Palms, Bermuda*, was estimated to achieve \$40,000 to \$60,000, and ultimately



Georgia O'Keeffe (1887-1986), *Banyan Tree with Palms, Bermuda*. Graphite on paper, 21 $\frac{1}{2}$  x 14 $\frac{1}{4}$  in. Courtesy Skinner, Inc. **Estimate: \$40/60,000**  
**SOLD: \$237,000**



Irving Ramsey Wiles (1861-1948), *Sunlight in the Studio*. Oil on canvas, 18 1/8 x 22 3/16 in., signed and dated lower right: 'Irving R. Wiles 1888'; titled on presentation plaque. Courtesy Skinner Inc. **Estimate: \$100/150,000**  
**SOLD: \$219,000**

brought \$237,000. Wiles' painting *Sunlight in the Studio* was set at a presale estimate of \$100,000 to \$150,000, and achieved \$219,000.

## MESA

### HIGH NOON AUCTION

JANUARY 24<sup>TH</sup>

\$1.8 million

The *High Noon Show & Auction* celebrated several milestones when it began January 24 in Mesa, Arizona: it was the 25<sup>th</sup> year of the show, and also the first year for new owner Brian Lebel, who purchased the show in early 2014. The auction exceeded \$1.8 million in sales.

"The event was great. Show attendance, auction prices, dealer participation, and visitor enthusiasm were all higher than they've been in years," Lebel says.

One of the leading lots was Charles M. Russell's letter *Friend Carey* (est. \$90/115,000), written in February 1921 and illustrated with a cowboy dancing over a freshly dug hole. The letter sold for \$126,500. ■



Charles M. Russell (1864-1926), *Friend Carey*, illustrated letter to friend Harry Carey. Mixed media on paper, 10 x 6 $\frac{1}{2}$  in. Courtesy High Noon Auction. **Estimate: \$90/115,000**  
**SOLD: \$126,500**