



Estimate:
\$7,000 / \$9,000

5000
2005 Jaguar S-Type
4-door sedan; vin: SAJWA01U25HN22907; cal: 5MXV741; odometer indicates 88,310 miles; 4.2L V8 DOHC 32V engine; 6-speed automatic overdrive; RWD; 18.40 gallon fuel tank; 18 mpg city; 28 mpg hwy; 4-wheel ABS; driver/passenger front/side, head curtain airbags; power door locks; vehicle anti-theft; electronic parking aid; AC; individual climate controls; steering wheel mounted controls; power adjustable exterior mirror; power windows; tilt steering column; cruise control; rain sensing wipers; heated exterior mirror; topaz metallic exterior; exterior in great condition; beige leather interior; genuine wood trim; leather steering wheel; interior in great condition. Buyer is responsible for all fees and taxes including but not limited to sales tax and registration.



Estimate:
\$1,000 / \$1,500

5001
Omega Railmaster Stainless Steel Wristwatch.
DIAL: Round, black, Arabic and luminous hour markers, outer minutes track, luminous arrow center sweep seconds hand, luminous arrow hands, Omega, Railmaster, Co-Axial Chronometer 150m/500ft., Swiss made. MOVEMENT: Automatic, twenty-seven (27) jewels, adjusted five (5) positions and temperature, 2403, Omega. CASE: Barrel, four lugs, stainless steel, skeleton back, Seamaster, aqua terra, Co-Axial escapement, Omega, 39 mm. BRACELET: Stainless steel, oyster link, deployant clasp, Omega, 7 inches. {Gross Weight: 77.8 dwts}



Estimate:
\$5,000 / \$7,000

5002
Heuer Autavia Stainless Steel, Leather Wristwatch - Ref. No. 2446

DIAL: Round, black, luminous hour markers, white outer track, three subsidiary dials at 3, 6 and 9 o'clock, center chronograph hand, luminous baton hands, Autavia Heuer, Abercrombie & Fitch Co., Swiss. MOVEMENT: Manual wind (not opened). CASE: Round, stainless steel, four lugs, tachymeter bezel, Autavia Heuer, no. 2446, case no. 109005, 40 mm. STRAP: Black leather, metal buckle, 6 3/4 to 8 inches. {Gross Weight: 46.7 dwts}



Estimate:
\$1,000 / \$1,500

5003
Ladies Art Deco Diamond, Ruby, Platinum Wristwatch.

DIAL: Round, silver, blued Arabic numeral hour markers, black outer minutes track, blued arrow hands, Switzerland. MOVEMENT: Manual wind, seventeen (17) jewels, unadjusted, 3137, Columbia WD Co., Switzerland. CASE: Round, two lugs, platinum, snapback, 15 mm, accented by two kite-cut, twelve baguette-cut and forty-six single-cut diamonds weighing a total of approximately 1.55 cttw., further accented by four baguette-cut rubies. BRACELET: Stylized platinum link measuring approximately 4 mm in width, six baguette-cut rubies, accented by twelve baguette-cut diamonds and one hundred and three single-cut diamonds weighing a total of approximately 1.50 cttw., fold over clasp with safety chain, 5 1/2 inches. {Gross Weight: 12.9 dwts} Note: Minutes hand missing, discoloration to dial.



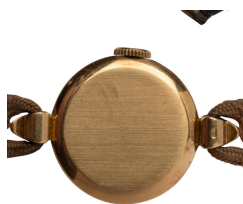
Estimate:
\$2,000 / \$3,000

5004 Ladies Rolex Diamond, 18k Yellow Gold Wristwatch.
DIAL: Cushion, gold, gold index hour markers, black baton hands, Rolex, Precision, Swiss. MOVEMENT: Manual wind, eighteen (18) rubis, Rolex, Geneve, Swiss. CASE: Cushion, 18k yellow and white gold, snapback, 286 70, Montres Rolex, Geneva, Switzerland, 1.33 cttw. diamond bezel, 24 x 26 mm. BRACELET: 18k yellow gold smoothed mesh link measuring approximately 16 mm to 14 mm in width, fold over clasp, 6 inches. {Gross Weight: 32.2 dwts}



Estimate:
\$5,000 / \$7,000

5007 Patek Philippe & Co. for Brock & Co. 18k Yellow Gold, Leather Wristwatch.
DIAL: Rectangle, pink gold, pink gold Roman numeral and index hour markers, seconds dial at 6 o'clock, pink gold baton hands, Patek Philippe & Co., Geneve, Swiss. MOVEMENT: Manual wind, eighteen (18) jewels, three (3) heat, cold, isochronism, adjusted five (5) positions, no. 834010, Patek Philippe & Co., Geneve. CASE: Rectangle, snapback, four lugs, 18k yellow gold, 623045, Patek Philippe & Co., Geneve, Swiss, 36 x 20 mm. STRAP: Brown leather, metal buckle, 6 to 7 1/2 inches. Accompanied by original Brock & Co. box. {Gross Weight: 21.0 dwts} Note: Discoloration to dial, small chips at crystal edge.



Estimate:
\$1,000 / \$1,500

5005 Ladies Patek Philippe & Co. 18k Yellow Gold, Fabric Wristwatch.
c. 1935
DIAL: Round, silver, stylized gold Arabic numeral hour markers, outer gold dot minutes track, gold dauphine hands, Patek Philippe & Co, Geneve, Swiss. MOVEMENT: Manual wind, eighteen (18) jewels (not opened), no. 852252. CASE: Round, two stylized lugs, 18k yellow gold, snapback (not opened), no. 631345, 20 mm. STRAP: Fabric, gold-filled fold over clasp, 6 inches. {Gross Weight: 9.4 dwts} Note: Strap needs to be replaced, clasp doesn't open.



Estimate:
\$2,000 / \$3,000

5008 Diamond, Ruby, 18k Gold Ring
Featuring one marquise-cut diamond weighing approximately 2.05 cts., flanked by two round-cut rubies weighing a total of approximately 1.60 cttw., accented by sixteen baguette-cut and forty round-cut diamonds weighing a total of approximately 0.50 cttw., set in an 18k yellow gold mounting. {Size: 7 3/4, Gross Weight:



Estimate:
\$3,000 / \$5,000

5006 Ladies Helvetia 18k Yellow Gold Covered Wristwatch.
The 18k yellow gold stylized brink link measuring approximately 37 mm in width, completed by a tongue and groove clasp, forming a 7 1/4 inch bracelet with a hinged front cover opening to reveal a round dialed Helvetia watch head. {Gross Weight: 75.9 dwts}



Estimate:
\$3,000 / \$5,000

5009 Diamond, 18k Yellow Gold Fringe Necklace.
Featuring sixty-six full-cut diamonds weighing a total of approximately 3.75 cttw., set in an 18k yellow gold fringe style mounting, completed by a tongue and groove clasp with figure eight safety, forming a 15 1/2 inch necklace. {Gross Weight: 74.1 dwts}



Estimate:
\$1,000 / \$1,500

5010
Pair of Diamond, 18k Yellow Gold Earrings.
Each featuring thirteen round brilliant-cut diamonds weighing a total of approximately 0.75 cttw., set in an 18k yellow gold textured flower motif mounting measuring approximately 28 x 24 mm. Total diamond weight for the pair is approximately 1.50 cttw. {Gross Weight: 16.7 dwts}



Estimate:
\$2,000 / \$3,000

5014
Ancient Coin, 18k Yellow Gold Necklace.
Featuring one ancient Roman/Egyptian Alexandria Bronze coin, prong set in an 18k yellow gold mounting measuring approximately 36 mm, suspended from an 18k yellow gold flat curb link chain measuring approximately 13.5 mm in width, completed by a lobster claw clasp, forming an 18 inch necklace. {Gross Weight: 75.7 dwts}

5011
Men's Ruby, 18k Yellow Gold Ring.
Featuring one oval shaped ruby cabochon measuring approximately 12.3 x 11.4 x 5.76 mm and weighing approximately 7.10 cts., set in an engraved foliate motif 18k yellow gold mounting. {Size: 10, Gross Weight: 12.3 dwts}

Estimate:
\$1,500 / \$2,500



Estimate:
\$1,000 / \$1,500

5015
Victorian Diamond, Silver-Topped, 18k Yellow Gold Pendant Brooch.
Designed as flowers with a scrolling ribbon, featuring sixteen old mine-cut diamonds weighing a total of approximately 2.00 cttw., accented by several rose-cut diamonds, set in a silver-topped, 18k yellow gold pendant brooch mounting measuring approximately 52 x 39 mm. {Gross Weight: 8.2 dwts}



Estimate:
\$1,000 / \$1,500

5012
Indian Diamond, Seed Pearl, 22k Yellow Gold Bracelet.
Featuring twenty-one rose-cut diamonds, accented by several seed pearls, set in a 22k yellow gold hinged bangle bracelet mounting measuring approximately 9 mm in width, completed by a screw post clasp and with an internal diameter of approximately 57 mm. {Gross Weight: 15.4 dwts} Note: Screw post slightly damaged; not completely closing.



Estimate:
\$2,000 / \$3,000

5016
18k Yellow Gold Bracelet.
The 18k yellow gold fancy link measuring approximately 20 mm in width, completed by a tongue and groove clasp with figure eight safety, forming an articulated 7 inch bracelet. {Gross Weight: 38.8 dwts}



Estimate:
\$1,000 / \$1,500

5013
Men's Byzantine Gold Coin, Enamel, 22k Yellow Gold Ring.
Featuring one Byzantine Phocas 602-610 AD gold coin, accented by black, red and green enamel, set in a 22k yellow gold mounting. {Size: 10 1/4, Gross Weight: 12.9 dwts}



Estimate:
\$1,200 / \$1,600

5017
Pair of Tiffany & Co. "Atlas" 18k Yellow Gold Cufflinks.
The 18k yellow gold Roman numeral motif cufflinks measuring approximately 10 x 30 mm. {Gross Weight: 15.3 dwts} Note: Both marked "Atlas T & Co. 750 Italy."

5018
Tahitian Cultured Pearl, 18k Yellow Gold Jewelry Suite.
 Including one Tahitian cultured pearl ranging in size from approximately 10.5 mm to 10.2 mm, 18k yellow gold 19 inch necklace together with one matching Tahitian cultured pearl ranging in size from approximately 10.5 mm to 10.1 mm, 18k yellow gold 7 1/2 inch bracelet.
 {Gross Weight: 61.0 dwts}

Estimate:
\$3,000 / \$5,000



Estimate:
\$2,000 / \$3,000

5019
Diamond, 14k Gold Bracelet.
 Featuring one hundred and sixty round brilliant-cut diamonds weighing a total of approximately 9.50 cttw., set in a 14k yellow and white gold hinged bangle bracelet mounting measuring approximately 13 mm in width, completed by a tongue and groove clasp with figure eight safety and an internal diameter of approximately 56 mm.
 {Gross Weight: 30.8 dwts}
 Provenance: From the Estate of Lois Lehrman; former owner/publisher of the Nob Hill Gazette for 38 years, Lois was the Co-Deputy Chief of Protocol for the city of San Francisco. She was Northwest Airlines' "London Business Woman of the Year". She held an honorary doctorate from the Academy of Arts and was so well known for her philanthropy throughout the Bay Area that she has a day named after her.



Estimate:
\$1,000 / \$1,500

5020
Pair of Diamond, 18k Gold Ear Clips.
 Each featuring forty-six round brilliant-cut diamonds weighing a total of approximately 2.25 cttw., set in an 18k yellow and white gold non-pierced ear clip mounting measuring approximately 26 x 23 mm. Total diamond weight for the pair is approximately 4.50 cttw.
 {Gross Weight: 9.0 dwts}
 Provenance: From the Estate of Lois Lehrman; former owner/publisher of the Nob Hill Gazette for 38 years, Lois was the Co-Deputy Chief of Protocol for the city of San Francisco. She was Northwest Airlines' "London Business Woman of the Year". She held an honorary doctorate from the Academy of Arts and was so well known for her philanthropy throughout the Bay Area that she has a day named after her.
 Note: One diamond missing.



Estimate:
\$1,500 / \$2,500

5021
Indian King Fisher Feather, 20k Yellow Gold Necklace.
 Featuring one round gold bead accented by floral motif king fisher feathers and measuring approximately 25 mm, suspended from a strand of 20k yellow gold cap style beads, completed by an "s" hook clasp, forming a 16 inch necklace.
 {Gross Weight: 42.3 dwts}
 Note: Losses to king fisher feathers.



Estimate:
\$2,000 / \$3,000

5022
Pair of Victorian Pearl, Diamond, Black Enamel, 14k Yellow Gold Bracelets.
 Each matching bracelet featuring four half pearls (presumably natural), accented by several rose-cut diamonds, further enhanced by black enamel throughout, set in a 14k yellow gold foliate motif hinged bangle bracelet mounting measuring approximately 25.5 mm in width and with an internal diameter of approximately 58 mm.
 {Gross Weight: 59.4 dwts}
 Note: Moderate scratches on backs of bracelets; minor scratches on the fronts. One safety chain broken.



Estimate:
\$2,000 / \$3,000

5023
14k Yellow Gold Necklace.
The 14k yellow gold brick link measuring approximately 19 mm in width, completed by a tongue and groove clasp with figure eight safety, forming a 17 1/4 inch necklace.
{Gross Weight: 54.7 dwts}
Provenance: From the Estate of Lois Lehrman; former owner/publisher of the Nob Hill Gazette for 38 years, Lois was the Co-Deputy Chief of Protocol for the city of San Francisco. She was Northwest Airlines' "London Business Woman of the Year". She held an honorary doctorate from the Academy of Arts and was so well known for her philanthropy throughout the Bay Area that she has a day named after her.



Estimate:
\$2,000 / \$3,000

5026
Art Deco Tiffany & Co. Ruby, Diamond, Platinum Ring.
Centering one octagonal shaped ruby measuring approximately 5.7 x 6.6 x 3.8 mm, accented by two baguette-cut and thirty round-cut diamonds weighing a total of approximately 0.40 cttw., set in a platinum mounting.
{Size: 6, Gross Weight: 2.6 dwts}
Note: Inside shank marked "Tiffany and Co." and engraved "L.W.P. to E. June 6, 1935"



Estimate:
\$2,000 / \$3,000

5027
Diamond, Platinum Brooch.
c. 1950
Featuring two cut-corner triangular-cut and three emerald-cut diamonds weighing a total of approximately 1.75 cttw., accented by sixty-one baguette and tapered baguette-cut diamonds weighing a total of approximately 1.60 cttw., further enhanced by eighty-eight round brilliant-cut diamonds weighing a total of approximately 3.80 cttw., set in a platinum circle and spray motif mounting measuring approximately 53 x 33 mm. Total diamond weight for the brooch is approximately 7.15 cttw.
{Gross Weight: 8.6 dwts}

5024
Diamond, Platinum Ring.
Featuring one round brilliant-cut diamond weighing approximately 2.15 cts., accented by approximately one hundred and forty full-cut diamonds weighing a total of approximately 0.75 cttw., set in a platinum mounting.
{Size: 8, Gross Weight: 3.8 dwts}
Provenance: From the Estate of Lois Lehrman; former owner/publisher of the Nob Hill Gazette for 38 years, Lois was the Co-Deputy Chief of Protocol for the city of San Francisco. She was Northwest Airlines' "London Business Woman of the Year". She held an honorary doctorate from the Academy of Arts and was so well known for her philanthropy throughout the Bay Area that she has a day named after her.

Estimate:
\$6,000 / \$8,000



Estimate:
\$1,500 / \$2,500

5028
Belle Epoque Diamond, Platinum, 14k Yellow Gold Neglige necklace.
Featuring twenty-seven old European-cut diamonds weighing a total of approximately 3.75 cttw., set in a platinum-topped, 14k yellow gold negligee mounting measuring approximately 49 mm in length, suspended from a platinum chain, completed by a spring ring clasp, forming a 20 inch necklace.
{Gross Weight: 8.6 dwts}



Estimate:
\$2,000 / \$3,000

5025
Diamond, Platinum, 18k White Gold Bracelet.
Featuring four hundred and fourteen round-cut diamonds weighing a total of approximately 3.75 cttw., set in a platinum Art Deco style mounting measuring approximately 13 mm in width, completed by an 18k white gold tongue and groove clasp with two figure eight safeties, forming a 7 1/4 inch bracelet.
{Gross Weight: 25.5 dwts}



Estimate:
\$1,500 / \$2,500

5029
Sapphire, Diamond, Platinum Ring.
Featuring one pear-cut sapphire weighing approximately 3.00 cts., accented by four marquise-cut and nine full-cut diamonds weighing a total of approximately 1.00 cttw., set in an engraved platinum foliate motif mounting.
{Size: 7 3/4, Gross Weight: 7.4 dwts}



Estimate:
\$7,000 / \$9,000

5033
Diamond, Platinum Ring.
Featuring one round brilliant-cut diamond weighing approximately 2.25 cts., accented by approximately one hundred and forty full-cut diamonds weighing a total of approximately 0.75 cttw., set in a platinum mounting.
{Size: 8, Gross Weight: 3.9 dwts}
Provenance: From the Estate of Lois Lehrman; former owner/publisher of the Nob Hill Gazette for 38 years, Lois was the Co-Deputy Chief of Protocol for the city of San Francisco. She was Northwest Airlines' "London Business Woman of the Year". She held an honorary doctorate from the Academy of Arts and was so well known for her philanthropy throughout the Bay Area that she has a day named after her.



Estimate:
\$2,000 / \$3,000

5030
Art Deco Tiffany & Co. Sapphire, Diamond, Platinum Ring.
Centering one square shaped, faceted-top sapphire measuring approximately 4.7 x 4.6 mm, accented by eight full-cut diamonds weighing a total of approximately 0.50 cttw., set in a platinum mounting.
{Size: 8, Gross Weight: 2.4 dwts}
Note: Inside shank marked "Tiffany & Co."



Estimate:
\$1,000 / \$1,500

5031
Jadeite Jade, Ruby, Diamond, Onyx, 18k White Gold Brooch.
Featuring one carved and pierced jadeite jade plaque depicting turtles and measuring approximately 28 x 45 mm, flanked by two round ruby cabochons measuring approximately 4 mm, accented by two black onyx segments, further enhanced by one hundred and six round-cut diamonds weighing a total of approximately 0.80 cttw., set in an 18k white gold Art Deco style mounting measuring approximately 35 x 70 mm.
{Gross Weight: 24.9 dwts}



Estimate:
\$1,000 / \$1,500

5034
Art Deco Jadeite Jade, Diamond, Platinum Brooch.
Featuring one elongated hexagon shaped carved jadeite jade plaque measuring approximately 27 x 13 mm, accented by twenty baguette-cut diamonds weighing a total of approximately 1.00 cttw., further enhanced by twenty round-cut diamonds weighing a total of approximately 0.35 cttw., set in a platinum mounting measuring approximately 27 x 39 mm.
{Gross Weight: 5.7 dwts}



Estimate:
\$3,000 / \$5,000

5032
Jadeite Jade, Diamond, 14k White Gold Ring.
Featuring one navette shaped jadeite jade cabochon measuring approximately 29 x 8.5 mm, accented by sixteen baguette-cut and forty-two round-cut diamonds weighing a total of approximately 2.00 cttw., set in a 14k white gold mounting.
{Size: 5 1/4, Gross Weight: 6.9 dwts}



Estimate:
\$1,000 / \$1,500

5035
Vintage Emerald, Diamond, Platinum Necklace.
Featuring one emerald drop measuring approximately 12 x 10 x 5.5 mm, accented by twenty-one round-cut diamonds weighing a total of approximately 1.25 cttw., further enhanced by rose-cut diamonds, set in a platinum mounting, completed by a gold-filled spring ring clasp, forming a 15 inch necklace.
{Gross Weight: 4.6 dwts}
Note: One rose-cut diamond missing on bail.



Estimate:
\$4,000 / \$6,000

5036
**Art Deco Tiffany & Co.
Emerald, Diamond, Platinum
Ring.**

Featuring one round shaped emerald sugarloaf cabochon measuring approximately 7 x 7 x 5.3 mm, flanked by two old European-cut diamonds weighing a total of approximately 0.70 cttw., accented by six old round-cut diamonds weighing a total of approximately 0.02 cttw., set in an engraved platinum mounting.
{Size: 6 1/2, Gross Weight: 2.3 dwts}
Note: Partial "Tiffany" mark on inside shank and worn serial no. beginning with a "Z."



Estimate:
\$30,000 / \$50,000

5037
Diamond, Platinum Ring.

Featuring one round brilliant-cut diamond weighing approximately 4.10 cts., accented by approximately one hundred and forty full-cut diamonds weighing a total of approximately 0.75 cttw., set in a platinum mounting.
{Size: 7 3/4, Gross Weight: 4.4 dwts}
Provenance: From the Estate of Lois Lehrman; former owner/publisher of the Nob Hill Gazette for 38 years, Lois was the Co-Deputy Chief of Protocol for the city of San Francisco. She was Northwest Airlines' "London Business Woman of the Year". She held an honorary doctorate from the Academy of Arts and was so well known for her philanthropy throughout the Bay Area that she has a day named after her.



Estimate:
\$3,000 / \$5,000

5038
JAN MATULKA
(American/Czech, 1890-1972),
"Bohemian Landscape,"
oil on canvas,
canvas: 26 x 30.25 inches, framed: 30.75 x 35.75 inches.
Provenance: Robert Schoelkopf Gallery; Herbert and Marion Sandler Estate
Exhibition History: Robert Schoelkopf Gallery.



Estimate:
\$5,000 / \$7,000

5039
RAPHAEL SOYER
(American, 1899 - 1987),
Vinalhaven, Maine, 1958,
oil on canvas,
canvas: 20 x 24.25 inches, framed: 28.25 x 32 inches,
signed lower right.
Provenance: Herbert and Marion Sandler Estate
Exhibition History: Whitney Museum of American Art (New York, NY), Raphael Soyer Exhibition, October 23 - December 3, 1967. Catalogue No. 78.
Lender: Mr. and Mrs. Herbert Sandler, exhibition label affixed verso. Temple Beth El Art Festival (Portland, Maine), No. 114, exhibition label affixed verso.



Estimate:
\$5,000 / \$10,000

5040
GUY CARLETON WIGGINS
(American, 1883-1962),
"St. Patrick's, Winter,"
oil on board,
board: 9.75 x 12.75 inches, overall: 16 x 13 inches,
signed lower right "Guy Wiggins, NA," titled and signed "Guy Wiggins, NA," verso.

Estimate:
\$20,000 / \$30,000

5041
ALBERT BIERSTADT
(American, 1830 - 1902),
"The Hudson," 1861,
oil on paper laid to panel,
panel: 13.75 x 17.75 inches, framed: 20 x 24.5 inches,
signed lower right, titled and dated verso.
Note: We wish to thank Melissa Webster Speidel, President of the Bierstadt Foundation and Director of the Albert Bierstadt Catalogue Raisonnee Project, for her kind assistance in cataloguing this lot. This painting will be included in her database being compiled on the artist's work.



5042
MARION KAVANAUGH WACHTEL
 (American, 1873/77-1954),
 Pasadena Landscape,
 watercolor,
 image size: 12.75 x 18.25 inches, framed:
 23 x 29 inches,
 signed lower right.

Estimate:
\$1,000 / \$2,000



Estimate:
\$2,500 / \$3,500

5043
WALTER UFER
 (American, 1876-1936),
 Portrait: Mrs. Walter Wardrop, 1916,
 oil on canvas,
 canvas: 34 x 27.5 inches, framed: 42 x
 38 inches,
 signed lower right,
 Fenn Galleries (Santa Fe, NM) label
 affixed verso, with shipping label from
 Nedra Matteucci Galleries (Santa Fe,
 New Mexico), to Arthur P. and Beatrice
 K. Pacheco.

Provenance: This piece was first
 commissioned by Mrs. Walter Wardrop
 in 1916, where it was displayed at the
 Twenty-First Annual Exhibition of the
 Palette and Chisel Club, the Art
 Institute of Chicago, April 25 to May 8,
 1916. Mrs. Walter Wardrop (Harriet
 Sullivan Wardrop) was born in Chicago
 in 1872 to Irish immigrants. In 1895 she
 married Walter Wardrop, who began
 his career in the bicycle industry and
 eventually became a publisher and
 authority on commercial vehicles in the
 early days of motoring. After her
 husband's death in 1925, Mrs. Wardrop
 moved to California and settled in Santa
 Monica. She died in 1951 and is buried
 in Colma, California. At some point the
 Fenn Galleries and Nedra Matteucci
 Galleries of Santa Fe, NM had the piece
 before it was sold to Arthur P. and
 Beatrice K. Pacheco (Mountain View,
 CA), the piece has been passed down
 by familial descent to current owner
 (San Francisco, CA).

Exhibition History: Twenty-First Annual
 Exhibition of the Palette and Chisel
 Club, the Art Institute of Chicago, April
 25 to May 8, 1916. This painting was
 one of 5 works shown in the exhibition
 by Ufer, and is number 70 in the
 catalogue. The full image of the work is
 printed on page 11.
 Nedra Matteucci label stored in a
 envelop and included in the lot.



Estimate:
\$2,000 / \$4,000

5044
ZOE MOZERT
 (American, 1907-1993),
 Beauty with Hat at the Beach,
 pastel on paper,
 pastel: 36 x 28 inches, framed: 39.5 x
 31.5 inches,
 signed lower right.



Estimate:
\$4,000 / \$6,000

5045
JAMES TAYLOR HARWOOD
 (American, 1860 - 1940),
 Snowy Mountain Landscape in Utah
 with Stream,
 watercolor on paper,
 sight: 10 x 7 inches, framed: 16.25 x
 13.25 inches
 signed lower right.



Estimate:
\$700 / \$1,000

5046
FRANCES HAMMELL GEARHART
 (American, 1869-1958),
 "Old Baldy,"
 color woodblock,
 image size: 10.25 x 11 inches, with
 matting: 14.5 x 19.25 inches.
 pencil signed lower right, titled lower
 left.



Estimate:
\$2,000 / \$3,000

5047
MAX LIEBERMANN
 (German, 1847-1935),
 Still Life with Roses,
 oil on canvas,
 canvas: 18.25 x 15.5 inches, framed:
 27.25 x 23.5 inches,
 signed lower left.



Estimate:
\$1,500 / \$2,000

5048
SPANISH SCHOOL
 (18th Century),
 Christ Victorious,
 oil on canvas,
 canvas: 36.25 x 28 inches, framed: 43 x
 34 inches,
 unsigned.



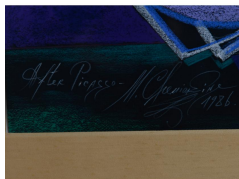
5049
Follower of CANALETTO
 (Italian, 1697-1768),
 The Grand Canal, Venice,
 oil on canvas (laid to board),
 canvas: 26 x 35 inches, framed: 27.75 x
 37 inches,
 not signed.

Estimate:
\$8,000 / \$12,000



5054
LEON GOLUB
 (American, 1922-2004),
 "Merc,"
 sanguine on paper,
 sheet: 29.5 x 22 inches, overall: 36 x 28
 inches,
 signed lower right and titled lower left.

Estimate:
\$1,000 / \$2,000



5050
MIHAIL CHEMIKIN
 (Russian, b. 1943),
 After Picasso, 1986,
 pastel on paper,
 sight: 48.25 x 33.25 inches, framed: 66
 x 52 inches,
 signed, titled and dated lower right.

Estimate:
\$4,000 / \$6,000



5055
ERNIE BARNES
 (American, 1938-2009),
 Study Sketch,
 mixed media on paper,
 image size: 18.5 x 15.75 inches, framed:
 28.5 x 25.5 inches,
 signed and titled lower right.

Estimate:
\$1,500 / \$2,500



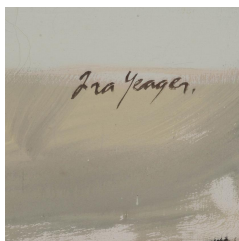
5051
IRA YEAGER
 (American, b. 1938),
 Sheep and Piglets Frolicking in a Flower
 Field,
 oil on canvas,
 overall: 74 x 72 x 1 inches. Folded: 72 x
 18.5 x 4.75 inches,
 signed lower left.
 Condition: paint loss at the top of the
 outer panel and in the hinges area.

Estimate:
\$3,000 / \$5,000



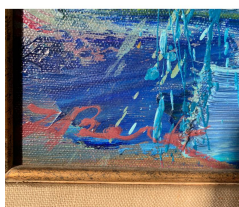
5056
JAMES WEEKS
 (American, 1922-1998),
 "Concord River Storm Clouds
 Approaching," 1973,
 acrylic on canvas,
 canvas: 60 x 72 inches,
 signed and dated verso,
 Exhibition History: Oakland Museum
 Label Affixed verso for their James
 Weeks Exhibition June - August 1978,
 lender on the Oakland Museum tag
 reads: Mr. and Mrs. James Weeks.
 Hirschl & Adler (New York, NY) label
 also affixed verso.

Estimate:
\$10,000 / \$15,000



5052
IRA YEAGER
 (American, b. 1938),
 "Woman with Chickens", 1975,
 oil on canvas,
 71.4 x 74.5 inches, unframed.
 Signed lower right, tiled, dated and
 signed verso.

Estimate:
\$2,000 / \$4,000



5053
HENRIETTA BERK
 (American, 1919-1993),
 Two Figures,
 oil on canvas,
 16 x 19.75 inches, framed: 24 x 27.5
 inches,
 signed lower left.

Estimate:
\$7,000 / \$10,000

Estimate:
\$2,000 / \$4,000

5057
ALPHONSE MUCHA
 (Czech, 1860 - 1939)
 "The Times of the Day / Éveil Du
 Matin," 1899,
 four vintage posters with color
 lithography,
 image: 40 x 14.25 inches, framed: 44.75
 x 19 inches.
 each plate signed, and dated '99 lower
 right, each stamped "Ceramine Paris," at
 lower center edge.
 Note: Each Season is laid completely
 down to board and is framed



Estimate:
\$7,000 / \$10,000

5058
ALPHONSE MUCHA
(Czech, 1860-1939),
Documents Décoratifs, 1902,
portfolio with 72 plates partly in colour
on firm wove paper, with the preface by
Gabriel Mourey, published by Librairie
Centrale des Beaux-Arts/Paris, the
portfolio cover and the titlepage with an
Art Nouveau label of the bookseller J.
M. Fabre/Barcelona,
sheet size each approximately 18 x 13
inches, in original half cloth portfolio,
condition of the plates varies, the
portfolio cover and spine with
abrasions, staining and wear, portfolio
size: 18.5 x 13.5 x 1.5 inches.
Published by Librairie Centrale des
Beaux-Arts/Paris,

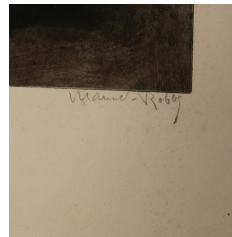


Estimate:
\$2,000 / \$4,000

5061
**L' Estampe Moderne. 1897
-1899,**
featuring 34 of the 100 plates published
for the book,
each sheet: 13 x 16.25 inches,
Printer: Imprimerie Champenois.
Almost all of these lithographs were
commissioned especially for this series,
featuring works by Mucha, Donnay,
Evenepoele, Rassenfosse, Louis Rhead,
H. Meunier, Léandre, Lepère, Grasset,
Berchmans, Ibels, DeFeure, Robbe,
Helleu, Roedel, Steinlen, Bouisset,
Gottlob, Détouche, Boutet, Bellery-
Desfontaines, Lenoir and Willette. With
12 individual titled tissue paper at back
of the book, a Table Alphabétique des
estamps, and a Table Alphabétique des
artistes

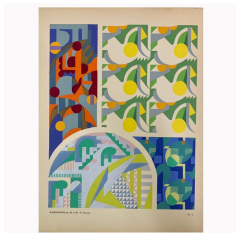
5059
**HENRI JEAN GUILLAUME
MARTIN**
(French, 1860-1943),
Femme Couronnée d'Epines, 1897,
lithograph in colors,
sight: 20 x 13 inches, framed: 26.5 x
19.5 inches,
signed lower right.

Estimate:
\$1,000 / \$2,000



Estimate:
\$500 / \$1,000

5062
MANUEL ROBBE
(French, 1872-1936),
"Le Printemps de Rodin," "Specimen
pour le Timbrage, Le Cabinet de
Toilet," circa 1900, and "La Nieve," circa
1900,
etching and aquatint in colors, drypoint
etching and aquatint in colors, and
aquatint,
image: 16.25 x 9.75 inches, sheet: 24.25
x 17.25 inches; image: 19.5 x 13 inches,
sheet: 24 x 17.5 inches, image: 14.25 x
19.5 inches, sheet: 17.25 x 24 inches
pencil signed lower right, with publisher
blindstamp lower right, edition 20/35,
pencil signed lower right, titled lower
right and lower left, with embossing in
center bottom margin, pencil signed
lower right, blindstamp lower right,
numbered 78 lower left.



Estimate:
\$1,000 / \$2,000

5060
**MAURICE PILLARD
VERNEUIL**
(French, 1869-1942),
"Kaléidoscope: Ornaments
Abstraites" (Kaleidoscope: Abstract
Ornaments),
portfolio, presenting a total of 87
designs for textiles, in the style of Art
Deco.
Portfolio (overall): 18 x 14.25 inches,
image size (each sheet) :14.25 x 11.75
inches.



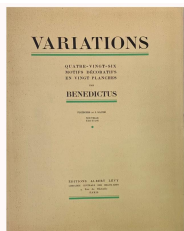
Estimate:
\$1,000 / \$2,000

5063
MANUEL ROBBE
(French, 1872-1936),
"La Coquette," 1901, "Fleur
d'Automne," 1903, and "Confidence au
Miroir",
etching in colors, etching and aquatint in
colors, and etching and aquatint in
colors,
image: 14 x 10 inches, sheet: 16.75 x
13.25 inches, image: 19.5 x 15 inches,
sheet: 24 x 17.25 inches, image: 17 x
10.5 inches, sheet: 22.75 x 16.5 inches,
signed in ink lower right, numbered 45
lower left, pencil signed lower right,
titled lower center, edition 35/65, pencil
signed in plate lower left, numbered 57
lower left margin, titled lower right
edge of sheet.
Reference: Merrill Chase , 22



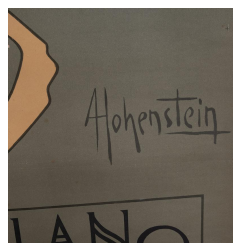
Estimate:
\$2,000 / \$4,000

5065
VARIOUS ARTISTS
(20th Century),
"GLI AVVISI DELLE OFFICINE G.
RICORDI E C.", circa 1914,
portfolio of 42 of the 70 plates that
comprise the entire portfolio,
Each plate 14x10 1/4 inches, 35 1/2 x 26
cm. Portfolio case overall: 11.25 x 15
inches.
Notes and condition: Condition varies,
generally A. Wear to original portfolio
case. "The set consisted of 70 small
lithographic plates of Ricordi's greatest
posters printed between 1895 and
1914. The set was sold commercially in
Italy, England, Germany, France and the
United States . . . Much like the famous
Masters of the Poster series created by
Chéret in Paris, this portfolio celebrated
the rise of the poster - which in Italy
was almost single handedly
accomplished by Ricordi."



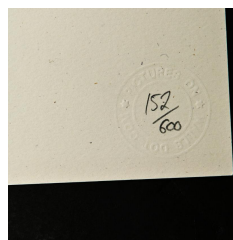
Estimate:
\$1,000 / \$2,000

5064
**JEAN SAUDÉ (Printer of
plates) and EDOUARD
BENEDICTUS (Artist),**
(French, 1878-1930),
"VARIATIONS : QUATRE-VINGT-SIX
MOTIFS DÉCORATIFS EN VINGT
PLANCHE," 1924, (86 works on 20
plates),
color pochoirs, complete set of 20
plates in original portfolio cover,
portfolio overall: 19.5 x 15.5 inches
Publisher: Librairie Centrale des Beaux-
Arts, Paris, France.



Estimate:
\$3,000 / \$5,000

5066
ADOLFO HOHENSTEIN
(German/Italian, 1854-1928),
Bitter Campari, circa 1900,
lithograph in colors, (not laid to linen)
sheet: 80.75 x 39.75 inches, unframed.
printed by Galileo, Milano.
Note: Since this piece is not laid to linen
it is very fragile and is kept in it's tube.
Please ask a staff member if you would
like to view this piece in person.



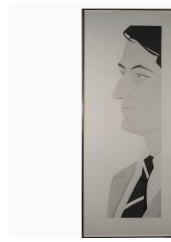
Estimate:
\$100,000 / \$150,000

5067
BANKSY
(British b. 1974),
"Girl with Balloon," 2004,
screenprint in colors,
sheet: 25.625 x 19.75 inches,
edition 152/600 in pencil lower right,
printed and published by Pictures on
Walls, London, with their blind stamp
on wove paper, the full sheet.
Condition: In overall very good
condition with some very slight creasing
from being handled. Otherwise, no
other visible issues apparent of any kind
or under UV/Blacklight.
This work is accompanied by the new
certificate of authenticity issued by Pest
Control Office.



Estimate:
\$2,000 / \$3,000

5068
ROBERT RAUSCHENBERG
(American, 1925-2008),
"Castle," from Romances, 1977,
color silkscreen,
sheet: 40 x 31 inches, framed: 42 x
33.25 inches,
pencil signed lower right and dated,
edition 23/39,
published by Gemini G.E.L. (Los
Angeles, CA), with their blindstamp
lower left.



Estimate:
\$1,500 / \$2,500

5072
ALEX KATZ
(American, b. 1927),
John Ashbery, 1986
aquatint on somerset paper, published
by Crown Point Press, (San Francisco,
CA), printed by Doris Simmelink,
image: 49.75 x 14.35 inches, sheet:
56.75 x 22 inches, framed: 59 x 24
inches,
pencil signed and numbered 11/25
lower left.



Estimate:
\$2,000 / \$3,000

5069
SAM FRANCIS
(American, 1923-1994),
Untitled (SF 220), 1976,
lithograph in colors on Rives BFK paper,
sheet: 30 x 22 inches, framed: 39 x 30.5
inches,
pencil signed lower right, edition 12/20,
published by The Litho Shop (Santa
Monica, California).
Reference: (Lembark, L 207)



Estimate:
\$1,000 / \$2,000

5073
JUDY CHICAGO
(American, b. 1939),
Reaching/Uniting/Becoming Free, 1979,
silkscreen in colors,
image size: 41 x 28 inches, framed: 45 x
32 inches,
signed, dated, titled and marked AP on
the bottom.



Estimate:
\$1,500 / \$2,000

5070
SAM FRANCIS
(American, 1923-1994),
Untitled (SF-233), 1977,
lithograph in black on rives BFK paper,
image: 26 x 16 inches, sheet: 30 x 22
inches, frame: 33.5 x 25.5 inches,
pencil signed lower right, edition 6/20,
printed by George Page and published
by The Litho Shop, Santa Monica, CA.



Estimate:
\$2,000 / \$4,000

5074
ALEXANDER CALDER
(American, 1898-1976),
"Albi," circa 1970,
lithograph in colors,
sheet: 35.25 x 25 inches, framed: 35.5 x
25.5 inches,
pencil signed lower right, edition
94/100.



Estimate:
\$2,000 / \$4,000

5071
ALEX KATZ
(American, b. 1927),
Susan, 1976,
silkscreen in colors on paper, published
by Alex Rosenberg, printed by Larry
Rosen,
image/sheet size: 25.5 x 19.25 inches,
framed: 35 x 28 inches,
pencil signed and numbered 107/125
lower left.



Estimate:
\$1,500 / \$2,500

5075
ALEXANDER CALDER
(American, 1898-1976),
Chaussette Rouge, circa 1970,
lithograph in colors,
sheet: 20 x 25.75 inches, framed: 20.25
x 25 inches,
pencil signed lower right, edition 23/75.



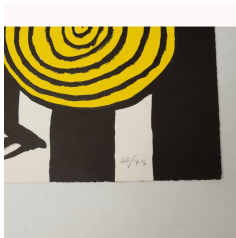
5076
ALEXANDER CALDER
 (American, 1898 - 1976),
 "Tabouret à Trois Pieds," 1969,
 lithograph in colors,
 sheet: 29.5 x 22.75 inches,
 pencil signed lower right, edition 5/75.

Estimate:
\$1,500 / \$2,500



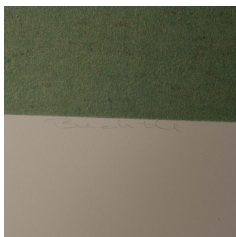
5077
ALEXANDER CALDER
 (American, 1898-1976),
 Le Bateau Lavoir, 1969,
 lithograph in colors,
 sheet: 21.75 x 29.5 inches,
 pencil signed lower right, edition 73/75
 lower left, published by Galerie Maeght.

Estimate:
\$1,500 / \$2,500



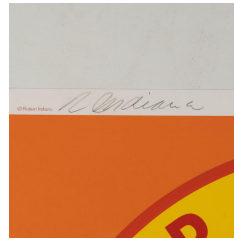
5078
ALEXANDER CALDER
 (American, 1898-1976),
 "LE S ET LE O," (The S and the O),
 1969,
 lithograph in colors,
 sheet: 21.75 x 29.75 inches,
 pencil signed lower left, edition 40/75,
 titled in pencil verso.

Estimate:
\$1,500 / \$2,500



5079
ROBERT BECHTLE
 (American, 1932-2020),
 "Santa Barbara Patio #1",
 lithograph,
 image size: 14 x 14 inches, overall: 25.25
 x 20.5 inches,
 signed and dated on the bottom,
 numbered 26/100.

Estimate:
\$500 / \$700



5080
ROBERT INDIANA
 (American, 1928-2018),
 "Der Traum Heisst Verlangen" (A
 Streetcar Named Desire), 1971-1972,
 screenprint in colors on smooth wove
 paper,
 sheet: 17 x 16.5 inches,
 pencil signed upper left corner,
 edition 29/135, printed in Western
 Germany, Published by Edition
 Domberger, Stuttgart.

Estimate:
\$700 / \$1,000

5081
ROBERT INDIANA
 (American, 1928-2018),
 "Love," 1972,
 two screenprints in colors,
 sheets (each): 34 x 24.5 inches,
 unframed.

Estimate:
\$700 / \$1,000



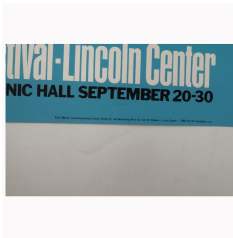
5082
ROMARE BEARDEN
 (American, 1911-1988),
 Mother and Child, 1974,
 screenprint in colors,
 image: 24 x 16 inches, framed: 33 x 25
 inches,
 pencil signed lower right, edition
 66/200.
 Provenance: From the Estate of Lois
 Lehrman; former owner/publisher of
 the Nob Hill Gazette for 38 years, Lois
 was the Co-Deputy Chief of Protocol
 for the city of San Francisco. She was
 Northwest Airlines' "London Business
 Woman of the Year". She held an
 honorary doctorate from the Academy
 of Arts and was so well known for her
 philanthropy throughout the Bay Area
 that she has a day named after her.

Estimate:
\$1,500 / \$2,500



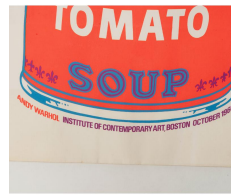
5083
**Attributed to ANDY
 WARHOL**
 (American, 1928-1987),
 Self -Portrait, 1966,
 silkscreen in colors on thick paper,
 overall: 22 x 22 inches,
 signed in black ink verso.

Estimate:
\$3,000 / \$5,000



Estimate:
\$2,000 / \$3,000

5084
ANDY WARHOL
(American, 1928-1987),
"Lincoln Center Ticket," 1967,
screenprint in colors on wove paper,
full sheet: 45 x 24.25 inches, unframed.
from the unsigned edition of 500 (there
was also a signed edition of 200 on
opaque acrylic), published by Lincoln
Center/List Poster and Print Program,
New York,
Literature: Feldman & Schellmann II.19.



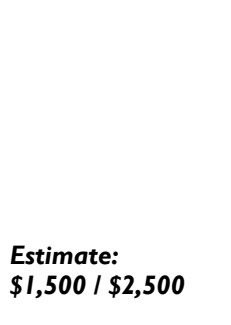
Estimate:
\$1,500 / \$2,500

5088
ANDY WARHOL
(American, 1928-1987),
Campbell's Soup Can (Tomato), 1966,
screenprint in colors, on a paper
shopping bag,
overall: 17.25 x 24.5 inches.
From the edition of unknown size,
published for the exhibition at the
Institute of Contemporary Art, Boston.
Ref: Feldman & Schellmann, II. 4A.



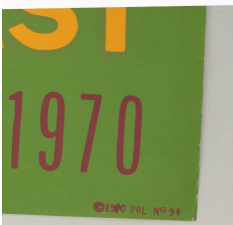
Estimate:
\$2,000 / \$3,000

5085
ANDY WARHOL
(American, 1928-1987),
"Lincoln Center Ticket," 1967,
screenprint in colors on wove paper,
overall: 45 x 24.25 inches, unframed.
From the unsigned edition of 500 (there
was also a signed edition of 200 on
opaque acrylic), published by Lincoln
Center/List Poster and Print Program,
New York.
Literature: Feldman & Schellmann II.19



Estimate:
\$1,500 / \$2,500

5089
ANDY WARHOL
(American, 1928-1987),
Campbell's Soup Can (Tomato), 1966,
screenprint in colors, on a paper
shopping bag,
overall: 17.25 x 24.5 inches.
From the edition of unknown size,
published for the exhibition at the
Institute of Contemporary Art, Boston,
Ref: Feldman & Schellmann, II. 4A.



Estimate:
\$1,000 / \$2,000

5086
ANDY WARHOL
(American, 1928-1987),
"Andy Warhol: Pasadena Art Museum -
Brillo," 1970,
screenprint in colors,
30 x 26 inches, unframed.
From an unknown edition size,
published by the Pasadena Art Museum,
California.



Estimate:
\$1,500 / \$2,500

5090
ANDY WARHOL
(American, 1928-1987),
Campbell's Soup Can (Tomato), 1966,
screenprint in colors, on a paper
shopping bag,
overall: 17.25 x 24.5 inches.
From the edition of unknown size,
published for the exhibition at the
Institute of Contemporary Art, Boston.
Ref: Feldman & Schellmann, II. 4A.



Estimate:
\$1,500 / \$2,500

5087
ANDY WARHOL
(American, 1928-1987),
Campbell's Soup Can (Tomato), 1966,
screenprint in colors, on a paper
shopping bag,
overall: 17.25 x 24.5 inches.
From the edition of unknown size,
published for the exhibition at the
Institute of Contemporary Art, Boston.
Ref: Feldman & Schellmann, II. 4A.



Estimate:
\$1,500 / \$2,500

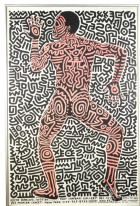
5091
ANDY WARHOL
(American, 1928-1987),
Campbell's Soup Can (Tomato), 1966,
screenprint in colors, on a paper
shopping bag,
overall: 17.25 x 24.5 inches.
From the edition of unknown size,
published for the exhibition at the
Institute of Contemporary Art, Boston.
Ref: Feldman & Schellmann, II. 4A.



Estimate:
\$500 / \$700

5092
**JEAN-MICHEL BASQUIAT -
KEITH HARING - ROY
LICHTENSTEIN - YOKO
ONO**

(American, 1960-1988), (American, 1958-1990), (American, 1923-1997), and (American/Japanese, b. 1933), "RAIN DANCE, A Benefit for the African Emergency Relief Fund," United States Committee for UNICEF, 1985, Offset lithographic poster in colors, from an edition of 1000, overall: 31 x 22 inches, plate signed by all artists, Jan. 30 - Paradise Garage N.Y.C., Exhibition: Feb 2. - 23 - 292 Lafayette St. N.Y.C.



Estimate:
\$1,000 / \$2,000

5093
KEITH HARING

(American, 1958 - 1990), Into 1984/Tony Shafrazi Gallery, 1984, Lithograph in colors, image: 33.5 x 22 inches, framed: 35.5 x 23.5 inches plate signed lower right, signed in silver ink lower right on figures foot.



Estimate:
\$500 / \$700

5094
KEITH HARING

(American, 1958-1990), "Crack Down!", 1986, silkscreen in colors, overall: 22 x 17.25, unframed. signed in ink on the right side, above plate signature and date.



Estimate:
\$500 / \$700

5095
ERIK DESMAZIÈRES

(French, b.1948), Les Roues, 1974, etching, 30.5 x 22.5 inches, signed and dated on the bottom, numbered 33/90.



Estimate:
\$3,000 / \$5,000

5096
JEAN DUBUFFET

(French, 1901-1985), "Immeuble", 1976, silkscreen, image size: 22.5 x 29 inches, overall: 28 x 35 inches, signed and dated lower right, numbered 41/50 lower left.



Estimate:
\$3,000 / \$5,000

5097
JEAN DUBUFFET

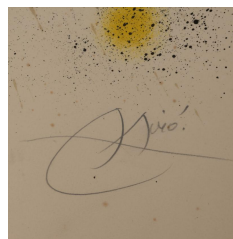
(French, 1901-1985), "Lion Heraldique", 1976, silkscreen, image size: 23.25 x 26.5 inches, overall: 28 x 35 inches, signed and dated lower right, numbered 41/50 lower left.



Estimate:
\$2,000 / \$4,000

5098
RUFINO TAMAYO

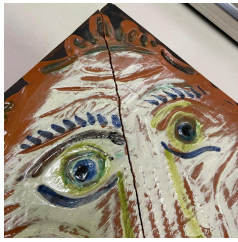
(Mexican, 1899-1991), Niño con Pajaros, color aquatint, 1976, sheet: 30 x 22 inches, framed: 40 x 32 inches, signed lower right, numbered 40/75, published by Poligrafia Barcelona from Rufino Tamayo 16 Aguafuertes, 1976. Tamayo 199.



Estimate:
\$4,000 / \$6,000

5099
JOAN MIRO

(Spanish, 1893-1983), "Sculptures et Montagne," 1973, lithograph in colors, published by the municipality of Passy, printed by Maeght, Paris, sheet: 30.75 x 21.5 inches, pencil signed lower right, edition 10/150 lower left.



Estimate:
\$1,500 / \$2,500

5100
PABLO PICASSO
(Spanish, 1881-1973),
Tete de Lion (A.R. 575),
terracotta plaque, partially engraved,
with colored engobe on glaze,
overall: 12 x 12 inches,
numbered JI 18A 20/50 verso. "Madoura
Plein Feu / Empreinte Originale de
Picasso" stamp verso.
Condition: this piece has a fracture
through the middle from the top to the
bottom of the work and has not been
repaired.
Notes: conceived in December 1968-
January 1969 and executed in a number
of 50.



Estimate:
\$2,000 / \$4,000

5104
ROBERT HUDSON
(American, b. 1938),
Untitled, circa 1985,
painted steel sculpture with rope,
overall: 32 x 37 x 27 inches.
Provenance: Herbert and Marion
Sandler Estate



Estimate:
\$20,000 / \$30,000

5105
MANUEL NERI
(American, 1930 - 2021),
Untitled,
plaster with dry pigments,
overall: 79.5 x 58 x 17.5 inches.
Provenance: Herbert and Marion
Sandler Estate



Estimate:
\$6,000 / \$8,000

5101
JAMES PRESTINI
(American, 1908-1993),
Untitled, circa 1972,
nickel-plated steel sculpture,
overall: 55 x 14 x 14 inches.
Provenance: Herbert and Marion
Sandler Estate



Estimate:
\$1,500 / \$2,500

5106
SUI JIANGUO
(Chinese, b. 1956),
Dinosaur Rouge / Made in China, 2002,
resin, polyester paint,
overall: 20 x 40 x 17,
signed at bottom foot with edition
number 326/1000.
Provenance: From a Private Collection
in Oakland California.
Note: The "Made in China," Series by
artist Sui Jianguo focuses on China's
exportation of goods. Jianguo's
intention is to get viewers to consider
who makes the products we know and
love, where they come from, and why.
Jianguo stated about China's economic
expanse, "In some ways is not good for
China, for the environment and human
life... I don't want him (the red dinosaur)
to continue getting bigger."



Estimate:
\$1,000 / \$2,000

5102
BRUCE BEASLEY
(American, b. 1939),
Untitled, 1970,
acrylic lucite sculpture,
sculpture: 17 x 17 x 17 inches, overall
(with base): 19 x 17 x 17 inches,
signed, dated and editioned 4/6.
Provenance: Herbert and Marion
Sandler Estate.
Condition: the upper part is detached
from the base.



Estimate:
\$3,000 / \$5,000

5103
ROBERT HUDSON
(American, b. 1938),
Untitled, circa 1985,
painted steel sculpture
overall: 27 x 30 x 21 inches.
Provenance: Herbert and Marion
Sandler Estate



Estimate:
\$20,000 / \$30,000

5107
RICHARD HUNT
(American, b. 1935),
Totem Pole,
bronze sculpture,
overall: 44 x 7 x 7 inches,
signed at base,
edition 4/5.
Provenance: Purchased from the Martin
du Louvre Gallery (Paris France)



Estimate:
\$1,500 / \$2,500

5109
GEORGE TICE
(American, 1938),
"White Castle, Route 1, Rahway, New Jersey," 1973,
gelatin silver print,
image: 10.5 x 13.25 inches, the mount
16 x 20 inches, framed: 21 x 23 inches.
With Tice's signature in pencil verso,
stamped with the Set No. 4 and the
print count 10 verso, with the Portfolio
V blind stamp on mount verso, printed
mid 1970's.



Estimate:
\$2,000 / \$3,000

5113
Louis XVI Style Walnut Armoire.
Carved with shell and foliate motifs throughout, silver metal mounts; the escutcheon mount is repeated on both sides.
{Approximate dimensions: 111 high x 65 inches wide.}
Condition: Good overall. Shell carving to one door currently attached by tape, needs repair. Evidence of previous insect damage. Patina to metal. Some surface wear throughout. The top roof section is missing.

5110
IRVING PENN
(American, 1917-2009),
"Four Moroccan Girls,"
gelatin silver print,
Image: 15 x 15 inches, framed: 22.75 x 22.75 inches,
Printed for "Vogue," in 1991, edition of 11. Stamped and signed in ink by Penn verso.

Estimate:
\$5,000 / \$7,000



Estimate:
\$1,500 / \$2,500

5114
Louis XVI Style Walnut Armoire, Beveled Mirror Doors.
Floral and foliate carvings throughout, each door with beveled glass panels.
{Approximate dimensions: 108 high x 60 wide x 23 inches deep.}
Condition: Very good overall. Small split to one side. Minor surface wear overall.

5111
HORST P. HORST
(American/German, 1906-1999),
Torso by Mestrovic, Metropolitan Museum, New York,
platinum print,
image size: 9.75 x 7.5, with matting:
17.75 x 15.25 inches,
later edition, pencil signed lower right in the margin, stamped verso,

Estimate:
\$2,000 / \$4,000



Estimate:
\$7,000 / \$12,000

5115
17th Century Flemish Verdure Tapestry.
Extensive woodlands featuring farmyard fowl and wild birds, centering rustic cottage with mountains in the far background, border of tulips and roses; with canvas backing and metal dowel.
{Approximate dimensions: 95 high x 128 inches wide.}
Condition: Overall condition is good. Repairs to losses, restorations throughout. Some fading, mainly to the lower quadrant.



Estimate:
\$5,000 / \$7,000

5112
EDWARD S. CURTIS
(American, 1868-1952),
The Vanishing Race, 1904,
platinum print,
image: 6 x 8 inches, framed: 17 x 17.5 inches.
Signed in ink and copyright blind stamp lower left "copyright 1904 by E.S. Curtis."
Literature: Edward S. Curtis: One Hundred Masterworks, Delmonico Books/Prestel, 2015, pl. 45



Estimate:
\$750 / \$1,300

**5116
Louis XV Style Gilt Bronze
Mounted Inlaid Walnut Center
Table.**

Rectangular top with rounded corners, the top with central ebonized panel inlaid and painted with floral and bird motif; gilt bronze trim to the top edge; the base with four cabriole legs, X-stretcher, gilt bronze mounts throughout includes faces and urn finial to the stretcher center.

{Approximate dimensions: 35 1/2 high x 43 1/2 wide x 24 deep.}

Condition: Some lifting, wear, and repair to veneer throughout. Split across the inlaid top. Patina to the mounts. Finial to the stretcher is separated. Some loss to the gilt bronze trim around the sides supporting the top.



Estimate:
\$6,000 / \$8,000

**5117
Louis XVI Style Giltwood
Console Table with White
Marble Top.**

The base carved with roundels hung with swags, the round tapered fluted legs with foliate carvings, the stretcher is centered by instruments with laurel and foliate sprays; the piece supported by leaf carved arrow feet.

{Approximate dimensions: 35 high x 59 wide x 22 inches deep.}

Condition: Some wear to the marble top. The base with minor loss and rubbing to gilt, most notably a chip to the corner of one foot.



Estimate:
\$1,200 / \$1,800

**5118
Savonnerie Style Carpet.**

Central round medallion within a light brown reserve framed by foliate scrolls and sprays; the main ground with cream and beige foliate motif, additional floral and foliate motifs to the ground and border.

{Approximate dimensions: 13 feet 11 inches x 9 feet 8 inches.}

Condition: Light wear overall.



Estimate:
\$1,000 / \$1,500

**5119
Large Louis XVI Style
Giltwood Mirror.**

Foliate carvings, mirrored panels around the perimeter.

{Approximate dimensions: 78 high x 44 inches wide.}

Condition: Loss to crown with piece available, Minor loss, rubbing, and patina to the gilt. Minor repair with re-gilding to the carvings.



Estimate:
\$5,000 / \$7,000

**5120
Monumental Versailles Style
Hanging Lantern**

Continental.

Circa 1975.

Louis XVI Versailles style eight light lantern form chandelier having two tone metal frame and beveled glass panels.

Not marked.

{Approximate Dimensions: 40" H. x 20" W. x 20" D.}

Condition: Overall condition is very good; light scratching and tarnish to surfaces.



Estimate:
\$2,000 / \$3,000

**5121
Pair of Beaux Arts Louis XIV
Style Gilt Bronze Sconces.**

Probably Continental.

Circa 1880-1900.

Five light wall lights with Mannerist masks of Apollo on sunbursts; lyres, sprays of laurel, ribbons and similar trophies. The design after fondeur Pierre-François Feuchère, (French, 1737 -1823).

Various letters including O and * R. {Approximate Dimensions: 38" H. x 21" W. x 12 1/2" D.}

Condition: Very good condition; the backs with some typical scratches from mounting.



Estimate:
\$1,000 / \$1,500

5122
Pair of Gilt Bronze Figural Lamps, Muses.

Cast as standing classical maidens playing harps, now mounted as lamps, with black silk shades.

{Approximate Dimensions: 23" H., figures from head tops to bases. 26" H. including lampholders.}

Provenance: From the Estate of Lois Lehrman; former owner/publisher of the Nob Hill Gazette for 38 years, Lois was the Co-Deputy Chief of Protocol for the city of San Francisco. She was Northwest Airlines' "London Business Woman of the Year". She held an honorary doctorate from the Academy of Arts and was so well known for her philanthropy throughout the Bay Area that she has a day named after her.



Estimate:
\$3,000 / \$5,000

5124
Pair of Beaux Arts Period Capodimonte Chests.

Naples, Italy.
Circa 1900.

The coffer shaped ceramic chests moulded with foliate borders shaping rectangular and square reserves, each featuring a mythological scene. Bronze mounts and feet, velvet lined interiors. Underglaze blue N under crown.

{Approximate dimensions: 12" H. x 15 1/2" W. x 9" D.}

Provenance: As purchased from Arlen Galleries

Condition: overall condition is very good, with no losses to the ceramic bodies. Some visible flaking and consequent loosening to the plaster keeping one of the hardware mounts in place.

5123
Large Scale Napoleon III Giltwood Mirror.

19th century.

Carved as broken pediment crown with spiral shell to the center; with applied foliate carvings throughout, and floral carvings across the top.

{Approximate dimensions: 124 high x 75 inches wide.}

Condition: Glass replaced, with some light corrosion to the edges. Repairs and minor loss to carvings. The mirror slightly loose in the frame. Minor gilt rubbing and loss.

Estimate:
\$1,000 / \$1,500



Estimate:
\$4,000 / \$6,000

5125
Pair of Black Marble and Gilt Bronze Columnar Pedestals.

Veined black marble, octagonal tops on round column bases, the colyums with gilt bronze Corinthian capitals, brass rings to the base.

{Approximate dimensions: 47 3/4 high x 14 1/4 inches diameter.}

Condition: Some scratches to the tops. Several repairs, includes the tops and both columns. Minor chips. Both pieces are stable.



Estimate:
\$5,000 / \$7,000

5126
Louis XIV Style Black Lacquer Chinoiserie Mazarin Cabinet with Rouge Griotte Marble Top.

Red, gray, and white marble top with moulded edge; on a black lacquer base with gilt chinoiserie motif decoration throughout; three short drawers to either side flank a single door cabinet; scrolled legs on a stylized stretcher base with foliate carvings; bun feet.

{Approximate dimensions: 35 1/2 high x 52 wide x 18 1/2 inches deep.}
Condition: Marble top with repaired crack. The base with some loss, patina, and rubbing to gilt throughout. Minor cracking and loss to black lacquered areas. Small loss to carving on one side panel trim.



Estimate:
\$500 / \$750

5128
Set of Eight Neoclassical Style Walnut Dining Chairs, Late 19th Century.

Late 19th century. Arched backs, the crowns with sun-ray carvings, flanked by two fluted elongated stiles terminating in acanthus carvings, square taper fluted legs, the front legs with casters; pale green and red vertically striped riveted upholstery; two chairs with higher backs. {Approximate dimensions: 40 high x 19 wide x 22 inches deep, higher backs are 42 inches high.} Condition: One crown with minor chip loss. Minor loss to fluted carving in several areas. Light surface wear throughout includes scuffs to the top of several stiles, and several small scuffs and divots to the legs.



Estimate:
\$1,200 / \$1,800

5127
Empire Style Gilt Bronze Mounted Cabinet, R.J. Horner (bears the original label), late 19th Century.

19th Century. Mahogany, overhanging top with gilt bronze trim to the edge, over a two short drawers crowning a two door cabinet over another long drawer, the cabinet and lower drawer flanked by round columns on either side, the piece resting on bun feet; gilt bronze mounts and pulls include torches within wreathes to the cabinet and wreath form pulls.

{Approximate dimensions: 39 3/4 high x 40 1/2 wide x 20 1/4 inches deep.} Condition: Narrow split to top with fill-in repair. Minor surface wear throughout includes light scratches and wear to the finish. Lacking the drawer to the cabinet section.



Estimate:
\$6,000 / \$8,000

5129
Italian Neoclassical Style Hardstone Mounted, Parcel Gilt Marble and Composition Console Table.

The faux pietra dura top with scrolled and foliate designs, the base with blackamoor supports centering a gilt bronze floral finial hung with a gilt bronze floral garland, the piece resting on gilt bronze scrolled foliate feet. {Approximate dimensions: 35 1/4 high x 58 wide x 21 1/4 inches deep.} Condition: Very good condition overall. Minor loss with fill-in to the top. One blackamoor figure with loss to the bowl in his hand. Patina to the gilt bronze.



Estimate:
\$1,500 / \$2,000

5130
French Renaissance Style Walnut Cabinet, Third Quarter 19th Century.

Third quarter 19th century. Two short drawers over a two door cabinet, bun feet on large casters; carvings throughout include faces, figures, lion heads, eagles, foliate motifs, fruit, etc. {Approximate dimensions: 39 high x 48 wide x 22 1/2 inches deep.} Condition: Some wear throughout, mainly to the top surface. Evidence of minor insect damage on the sides.



Estimate:
\$1,500 / \$2,500

5131
**Early Victorian Mahogany
Extension Dining Table,
Second Quarter 19th Century
(with two leaves and additional
leg).**

Second quarter 19th century.
The top with rounded edges, thick
fluted column form legs, on casters;
with two leaves, center support leg, and
extension crank.
{Approximate dimensions: 29 high x 67
wide x 46 inches deep, each leaf adds 20
inches.}
Condition: Very good overall
considering age. Surface scratches to
leaves, scuffs to edges. Light scuffs and
scratches throughout.



Estimate:
\$500 / \$750

5132
**American Classical Mahogany
Center Table.**

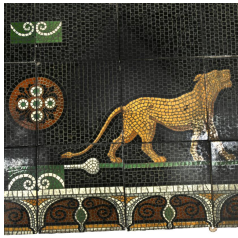
Second quarter 19th century.
Oval tilt top with central inlaid foliate
panel; on a pedestal base with four
scrolled feet.
'287' stamped to the table underside.
{Approximate dimensions: 30 high x 53
wide x 38 1/4 inches deep.}
Condition: Minor surface wear
throughout. Some repair to veneer
loss.



Estimate:
\$2,000 / \$3,000

5133
**Impressive Victorian Six Light
Brass and Painted Porcelain Oil
Lamp Chandelier.**

American.
Circa 1880 - 1885.
Attributed to Bradley and Hubbard. Six
light chandelier. Brass tubular nozzles
around the banded base, decorated with
portrait medallions under bows; painted
ceramic decorative elements with
daisies and leaves. This chandelier
comes with a painted plaster floral form
finial, used to cover the ceiling
attachment.
{Approximate measurements: 63" H. x
43" Diameter}.
Provenance: Deaccessioned from the
Fine Art Museums of San Francisco
Condition: Overall condition is very
good as far as appearance. Not tested
for function. One long nozzle tube
replaced. One arm is broken where it
connects to the body. Typical signs of
light wear, scratches, etc.



Estimate:
\$2,000 / \$3,000

5134
117 Renaissance Revival Minton Tiles, ca. 1885.

Stoke on Trent, England.
Circa 1890.

Comprising 41 tiles now applied to a wood board used to make the over mantel image of two leopards facing brackets enclosing two tiles with the image of Hephestus as a child making fire, all on a black and grey tesserated background, with scrolls, circular flourishes, etc. Also, roughly 50 black glazed tiles of rectangular and triangular form; several additional tiles removed from the borders and edging of this main image; and two tiles of larger rectangular form, moulded in low relief with women standing in period dress, carrying children in basket or birdcage, in pale ocher glazed enamel. Also, several broken tiles, moulded in low relief with oak leaf sprays withing circles, treacle glazed.; and six tiles with Gothic flourishes, black and orange enamel.

MINTON STOKE ON TRENT

{Approximate dimensions: the main image, 25 x 61 inches. The two large tiles 6 5/8" x 16 1/2" x 7/8".

Provenance: Deaccessioned from the Fine Art Museums of San Francisco - Originally from the M.H. de Young California Street residence.

The tiles applied to the wood board are in good condition. The two large tiles have rubbing, discoloration and losses to long edges. The oak leaf spray tiles are in moderate condition. All of the tiles have been used and then removed from the original De Young room.

Estimate:
\$2,000 / \$3,000

5135
Victorian Maple & Redwood Mantel with Round Stained Mirror, ca. 1885.

The cornice supported by two columns with corinthian capitals, the columns framing a round mirror, shelf with plinth beneath the mirror with a smaller shelf below, opening for the mantel below; carvings throughout with floral, foliate motifs, shells, shields, etc.

{Approximate dimensions: 126 high x 72 wide x 18 inches deep.}

Provenance: Deaccessioned from the Fine Art Museums of San Francisco - Originally from the M.H. de Young California Street residence.

Condition: Very good overall considering age. Minor surface wear throughout. Corner with veneer chip.
*Can be viewed at the Annex location.

5136
Victorian Half Tester Bed, De Young Headboard, Sideboards, & Footboard, Maple & Redwood, ca 1885,

With gold foliate brocade fabric canopy, the headboard having two coffered panels with gadrooned borders, the footboard and tester with carved foliate motifs.

{Approximate dimensions: 122 high x 69 wide x 80 inches deep.}

Provenance: Deaccessioned from the Fine Art Museums of San Francisco - Originally from the M.H. de Young California Street residence.

Condition: Very good overall considering age. Minor surface wear throughout. Very minor loss to carving on footboard.

Estimate:
\$1,000 / \$1,500



Estimate:
\$600 / \$900

5137
**George III Style Scottish Gilt
Bronze Mounted Tall Case
Clock, W. Paton Alyth, 19th
Century.**

19th century.
Broken pediment crown centering a brass finial and mounted face, the bonnet flanked with fluted columns bearing gilt metal Corinthian capitals, the brass face plate and dial with gilt metal mounts, glazed door to the body reveals the pendulum, and two weights, the bottom of the body with inlaid fruit bowl motif, all resting on bracket feet; inlaid trim and gilt metal mounts throughout.

The faceplate with domed plaque reading 'W. Paton Alyth'.

{Approximate dimensions: 84 high x 17 1/2 wide x 9 1/4 inches deep.}

Condition: Has not been tested, working order is not guaranteed. Some patina and wear to dial. Cracks to the top of the door, and a repair to the body in that same area. The case with some wear throughout including wear to finish, surface wear such as chips and scratches. Some loss and repair to veneer and other cracks.

With pendulum and two weights.



Estimate:
\$1,500 / \$2,000

5138
**Tiffany Studios Bronze Spider
Library Lamp Base, Mushroom.**
New York.

The patinated bronze base formed as an inverted mushroom cap, with multiple, organic ruffles, issuing central column, moulded with six linear leaves, issuing three curling Perkins Paddle light socket.

Brass base cover stamped: TIFFANY STUDIOS / NEW YORK/ 337.

18 1/2" H. not including shading cap.

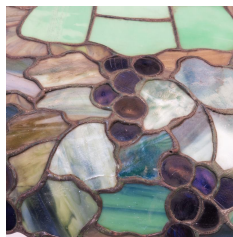
Literature: Dr. Egon Neustadt, *The Lamps of Tiffany*, New York, 1970, p. 73 (for the shade and base pairing)

Alastair Duncan, *Tiffany At Auction*, New York, 1981, p. 95, no. 256 (for the shade and base pairing)

Robert Koch, *Louis C. Tiffany's Glass, Bronzes, Lamps: A Complete Collector's Guide*, New York, 1989, p. 190 (for the shade and base pairing)

Alastair Duncan, *Tiffany Lamps and Metalware*, Woodbridge, Suffolk, 2007, p. 63, no. 238 (for the shade and base pairing) and 129, no. 545 (for the shade)

Condition: Attractive overall patina. Wiring replacement recommended.



Estimate:
\$6,000 / \$8,000

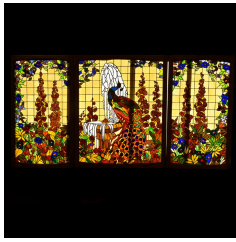
5139
**Duffner & Kimberley Hanging
Leaded Glass Shade, Approx 10
cracks.**

Circa 1908.

Three-lights; the glass stained in green and blue tones.

{Approximate dimensions: 19 high x 32 inches diameter.}

Condition: Approximately 10 cracks to the panes. Has not been tested, working order is not guaranteed.



Estimate:
\$15,000 / \$25,000

5140
Three Stained Glass Panels, Bardelli's Restaurant.
Union Tile Co., San Francisco.
Circa 1910.
Attributed to United Art Glass Company, San Francisco, Ca.
The central panel featuring the profile of a peacock among flowers; the two panels to the sides with flowers only.
Each leaded glass panel with oak frame {Approximate dimensions: Central panel: 48 1/2" H x 39 1/2" W. x 1 1/2" D. framed. Two panels to sides: 48 1/2" H. x 28" W. x 1 1/2" D. framed.}.
Literature: The peacock window appears as the front cover and on several unnumbered pages of Edith Hopps Powell's book San Francisco's Heritage in Art Glass (Allentown: Salisbury Press: 1976).
Notes: The panels were installed sometime between 1906 and 1911. The site of Bardelli's was Charles Fashion House between 1911-1946; and prior to that an oyster house, name unknown, 1906- 1910. San Francisco's legendary Bardelli's Restaurant was at 243 O'Farrell Street for fifty years. This suite of windows greeted customers in the fountain area for all of that time. Whereabouts of a larger peacock window placed just inside the front doors unknown.



Estimate:
\$20,000 / \$30,000

5142
Tiffany Studios Banded Dogwood Leaded Glass Lamp Shade
Circa 1910.
The shade made patinated bronze and leaded glass; designed as 12 rows of rectangular cells in variegated shades of green, green blue and aqua, with the band of floral decoration near the base. The floral band with white dogwood petals amongst green leaves.
TIFFANY STUDIOS NEW YORK 1491 - 7.
{Approximate dimensions: 9" H., 20 1/2" Diameter, base.
Condition: Overall condition is very good. There are one or two cracked rectangular cells and one replaced cell; two petals with hairline cracks.



Estimate:
\$4,000 / \$6,000

5143
Dirk Van Erp Boudoir Lamp.
Four panel mica shade, small bulb form lamp.
Marking to underside, 'Windmill over DIRKVANERP / SAN FRANCISCO'.
{Approximate dimensions: 12 3/4 high x 11 1/4 inches diameter.}.
Condition: Patina to the copper.



Estimate:
\$7,000 / \$8,000

5141
Tiffany Studios Bronze and Leaded Glass Wall Sconce.
Circa 1915.
Scrolling bronze bracket with beaded edge, issuing pendant tapering cylindrical shade containing green slag glass rectangular cells. To the top, a conical shade with vertical green glass panels between patinated bronze bands.
Base of sconce impressed TIFFANY STUDIOS / NEW YORK.
{Approximate dimensions: 15" H.; 7 1/2" the bottom part of the fixture; 6" H. the conical shade.}.
Pictured in the 'TIFFANY AT AUCTION Alastair Duncan', 1981, page 229.
Condition: Heavy patina to the sconce fixture; the pendant part of the light fixture in overall very good condition. The conical shade has 10 panels with some losses and cracks.



Estimate:
\$1,000 / \$1,500

5144
Four Piece Dirk Van Erp Oak Tree Motif Desk Set.
Comprising blotter pad with ends, rectangular tray, rolling ink blotter, and inkwell with glass insert.
Tray and inkwell marked with 'Windmill / DIRK VAN ERP / SAN FRANCISCO'.
{Approximate dimensions: Blotter 24 3/4 wide x 15 1/4 inches deep, tray 11 wide x 3 5/8 inches deep, rolling blotter 3 high x 5 wide x 3 inches deep, inkwell 3 high x 3 3/4 inches diameter.}.
Condition: Patina throughout. Light surface wear. Blotter pad with some stains.



Estimate:
\$8,000 / \$12,000

5145
**Gabrielle Chanel Embroidered
Black Silk Jersey Robe.**

Circa 1925.
The 1920s robe with a butterfly type capelet over the sleeveless dress, with crossover front bodice having long ties of grosgrain ribbon. The back has three lower panels stitched into the bodice as if it were a yoke. The capelet, dress front and dress hem to back embroidered in pastel hues with ovals and roundels of flower heads and leaves centering cornucopia issuing extensive floral bouquets.

Original "Gabrielle Chanel Paris" label. {Approximate Measurements: Bust: 36", Length: 42 3/4" from top of neck to hem edge. Capelet roughly 16" L.} Provenance: Property of a Descendent of the Original Owner, Bay Area, California.

Condition: The overall condition of this robe is very good. The silk jersey is lively, and the embroidery color is vibrant. Stitching to rear shoulder seam, right side, and loose thread to left side. There are no rips, tears or holes to this garment.

Notes: This robe is a wonderful example of early Chanel, showing the influence of couturiers Worth and Poiret as well as of theatrical dress on the designer in her early days. Fairies and butterflies were two ethereal visual devices that were fascinations of the high Victorian and Edwardian periods. Here, Chanel uses the capelet as a simplification of butterfly wings.

Actors and actresses used Asian robes as their backstage dress as early as 1880. Here, the contrast between the delicately shaded flowers on the black ground is reminiscent of the shawls of China, first popularized for Western dress circa 1910.



Estimate:
\$20,000 / \$30,000

5146
**1920s Gabrielle Chanel Coat,
Kitmir Embroidery.**

Circa 1924.
The kasha colored wool coat with fur collar and cuffs, embroidered throughout with geometric lines and geometric patterns. The embroidery machine embroidered chain stitch, or cornely. Lined in silk satin.

Label: Gabrielle Chanel MADE IN PARIS. Numbered in ink to underside of label in black handwritten ink, "24456". {Approximate Measurements: Bust 40" allowing for a few inches of overlap; 41" L. from nape of neck, back, to hem edge.}

Provenance: Property of a Descendent of the Original Owner, Eastern Seaboard.

Condition: The overall condition of the coat is very good; the embroidery is in very good order; with a few minor breaks to stitches and loose stitches. The fabric lightly worn. The label has been twisted about, with hints that it was used to hang up the garment on a hook There is pulling/tearing at the lining, sleeves. Sleeve linings repaired near tears. The fur is in relatively good condition. Hem appears to have original bias tape and stitching.

Notes: 1922 was the first year of Chanel's Russian collections, influenced by her affair with Grand Duke Dmitri Pavlovich, who arrived in Paris after the Russian Revolution. The Grand Duke's sister, Grand Duchess Maria Pavlovna of Russia, also arrived in Paris. The latter used the embroidery skills taught to her as a well-bred girl, to create a cooperative workshop, whose designs synthesized Russian nativist / folk styles together with modernist geometric and floral decorations. Chanel became the main patron of the Kitmir workshop.

A similarly embroidered Chanel coat is



Estimate:
\$1,200 / \$1,800

**5147
Pair of English Art Deco
Walnut and Green Leather
Upholstered Armchairs,
Attributed to Harry and Lou
Epstein, reupholstered.**

Attributed to Harry and Lou Epstein; the walnut frames reupholstered with green leather.
{Approximate dimensions: 30 high x 25 wide x 35 inches deep.}
Condition: Some minor surface wear throughout, includes scuffs and faded finish to the frames, fading and marks to the leather.



Estimate:
\$3,000 / \$5,000

**5149
French Art Deco Gilt Iron and
Metal Mirror Wall Console,
(Gilding Refreshed).**

Oval mirror, with light covered in canopy to the top and semi-circle mirrored shelf to the bottom.
{Approximate dimensions: 43 high x 22 3/4 wide x 7 1/2 inches deep.}
Condition: Restoration to gilt finish throughout, with some patina and rubbing. The light with no plug, just wires.



Estimate:
\$4,000 / \$6,000

**5148
H & L Epstein Attributed
English Art Deco Dining Suite.**

Harry and Lou Epstein, (English, active 1920s - 1950s) Art Deco parcel cream painted and bird's-eye maple veneer dining suite comprising: dining table, six red and gold brocade upholstered chairs two of which have barrel backs, and a bar cabinet, (two keys; and has missing possibly glass tops.)

{Approximate dimensions: Cabinet 43 3/4 high x 72 wide x 23 inches deep, chairs 36 1/2 high x 20 1/2 wide x 26 inches deep, table 31 high x 72 wide x 36 1/4 inches deep.}

There were a total of five Epstein brothers, whose father Morris emigrated to London at the end of the 19th Century. Morris Epstein started the furniture business that blossomed under the creative designs of Harry and Lou. The three other brothers helped market and sell the furniture, eventually expanding the Epstein's trade to Manchester & Glasgow.

Condition: One chair with repair to leg. Small veneer loss to the back of at least two chairs. Minor surface wear such as scuffs and light scratches throughout.
Keys available.



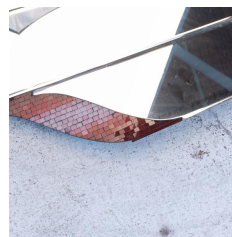
Estimate:
\$3,000 / \$5,000

**5150
Italian Art Deco Bird's-Eye
Maple, Macassar and Parcel
Ebonized Bedroom Suite,
comprising Full Size "Bateau"
Bed, (rails extended to
accommodate queen size
mattress), Pair of Nightstands
with Brocatelle Marble Tops;
and Triple Armoire.**

Comprising nightstand pair, full-size bed 'Bateau' bed, three door armoire, and end table.

{Approximate dimensions: Nightstands 27 high x 20 1/2 wide x 14 1/4 inches deep, armoire 77 high x 81 wide x 20 inches deep, end table 29 high x 20 wide x 13 1/2 inches deep, bed 37 1/2 high x 65 wide x 88 inches deep.}

Condition: Good overall. Several veneer chips. Minor surface wear throughout. Central door to armoire is locked. Escutcheon to armoire is loose. Keys available.]



Estimate:
\$1,200 / \$1,500

**5151
Art Deco Micro Mosaic
Mounted Flame Form Mirror,
Christopher Guy, with loss.**

The mirror in five vertical panels, the tops of which are accented with red, white, and pink glass mosaic tiles creating a flame-like appearance. Christopher Guy labels to reverse, '50.261 I.A.BEV.0050' impressed to the reverse.

{Approximate dimensions: 70 high x 21 inches wide.}

Condition: The very top mosaic piece is loose. Very light wear overall.



Estimate:
\$1,000 / \$1,500

5152
Art Deco Style Mohair Upholstered Birch Sofa (Modern), Green.

Continuous arms and back with rounded design, dark green mohair upholstery.
{Approximate dimensions: 34 1/2 high x 61 1/2 wide x 36 inches deep.}
Condition: Light wear overall, some light scratches to the frame.



Estimate:
\$500 / \$750

5153
Art Deco Bleached Burl Walnut Veneered "S" Form Side Table with Drawers, probably English.

In an "S" form, with four drawers having silver metal ball pulls, on a plinth base.
{Approximate dimensions: 28 high x 38 1/2 wide x 23 inches deep.}
Condition: Very light wear overall, some surface scratches.



Estimate:
\$750 / \$1,250

5154
Berkey & Gay Art Deco Cabinet Suite. Gilt Brass Mounted Birch Veneered Arched Display Cabinet, En Suite, including Gilt Brass Mounted, Parcel Ebonized and Birch Serpentine Sideboard with Glass Top.

Comprising a sideboard with two short drawers above two single door cabinets, with long drawer in between over an empty space, protective glass top; and a display cabinet, arched top section on a base with a single long drawer over a two door cabinet; both pieces with brass and gilt metal pulls, dark green trim.
Drawers to both pieces with 'BERKEY & GAY FURNITURE' round metal badges.
{Approximate dimensions: Sideboard 34 1/4 high x 60 wide x 20 1/2 inches deep, display case 71 high x 26 1/2 wide x 18 inches deep.}
Condition: Display cabinet lacking shelves. Sideboard with finish loss to the top. Minor wear throughout includes some cracking to veneer, some loss with touch ups to the green trim. and light surface scratches. Patina to pulls with possible restoration to the gilt metal.



Estimate:
\$8,000 / \$12,000

5155
Michel Mangematin (B. 1928) Bronze and Glass Oval Table.

Circa 1965-1970.
Elongated oval glass top on a bronze base.
{Approximate dimensions: 13 1/2 high x 74 wide x 28 1/4 inches deep.}
Condition: Light scratches to glass. Some patina to the base.



Estimate:
\$1,500 / \$2,000

5156
Set of Four Polished Chrome BRNO Chairs, Black & Gold Diagonal Upholstery.

Black and gold triangle pattern upholstery.
Labels to underside '...MADE BY GORDON INTERNATIONAL...'.
{Approximate dimensions: 31 3/4 high x 22 3/4 wide x 21 1/2 inches deep.}
Condition: Light wear overall.

5157
Eames for Herman Miller 670 Chair.

Black leather upholstery, walnut veneer. Herman Miller label to the underside. {Approximate dimensions: 31 1/2 high x 33 3/4 wide x 33 inches deep.} Condition: Wrinkling and wear to the leather, with the center of the seat starting to show cracks. Some light scratches to the wood.

Estimate:
\$1,000 / \$1,500



Estimate:
\$8,000 / \$12,000

5160
Jean-Michel Frank For Hermes Leather Bench.

Jean-Michel Frank (1895 - 1941); wrought iron frame with brown bridle leather. Leather label to underside reads 'J.M. FRANK PAR HERMES / Made in France / 5014388 / RD0388' {Approximate dimensions: 34 high x 52 wide x 23 inches deep.} Condition: Excellent, very light wear to the leather. Several very faint stains and marks.

5158
Eames for Herman Miller Chair 670 with 671 Ottoman.

Black leather upholstery, rosewood veneer. Herman Miller labels to both undersides. {Approximate dimensions: Chair 34 high x 33 wide x 32 inches deep, ottoman 16 1/2 high x 26 wide x 22 inches deep.} Condition: Leather with wrinkling and wear, some cracking to seat and arms. Veneer with some surface and finish wear including at least one chip loss to the ottoman.



Estimate:
\$2,000 / \$3,000

5161
Modernist Silvered Metal and Woven Garden Suite.

Comprising a table, one high back armchair, one armchair, and four side chairs; the table with labradorite top and metal base, the chairs with silvered metal frames, stretched black cloth seats and backs secured by black rope to the frame, dotted circle pattern. {Approximate dimensions: Table 29 1/2 high x 60 wide x 36 inches deep, high back chair 51 1/2 high x 24 1/2 wide x 28 inches deep, armchair 31 1/2 high x 24 1/2 wide x 23 1/2 inches deep, side chairs 31 3/4 high x 17 1/2 wide x 23 1/2 inches deep.} Condition: The frames with minor wear including divots and scratches.



Estimate:
\$1,000 / \$1,500

5159
Pair of Suede Upholstered Ralph Lauren Armchairs.

Rose suede with raised foliate motif, tufted back, riveted sides and base, bun feet. Ralph Lauren labels under the cushions. {Approximate dimensions: 35 1/2 high x 38 1/4 wide x 44 inches deep.} Condition: Red stain to one arm. Additional minor marks throughout.



Estimate:
\$1,000 / \$1,500

5163
A Finely Carved Chinese Archaistic Jade Wine Vessel with Dragon Motif.

Finely carved with taotie mask and dragon in low relief, the handle reaching out from a mythical beast head, with a fitted silver inlaid wood base. {Height 6 3/4 inches (17.1 cm) with base.} With a fitted fabric box.



Estimate:
\$2,000 / \$3,000



Estimate:
\$1,000 / \$1,500

**5164
Group of Chinese Jade Carvings.**

Comprising a carving of a female figure with a stick; a pair of young boys riding of the back of ox; a pair of recumbent beasts on carved wooden stands; and a double gourd shape pendant carved in relief with gourd and leaves. {Largest: Height 5 inches (12.7 cm)}. Condition: The female figure has restored.



Estimate:
\$500 / \$750

**5168
Two Chinese Carved Jade Snuff Bottles.**

Comprising: The first, of an even white tone body, carved in low relief showing a horned spotted ram below a pine tree to one side, the reverse decorated with a monkey sitting on a rock while hanging on a fruit-bearing peach tree; The second, is a stick neck flatten circular bottle, of an even celadon tone with incised floral branch issuing from rock. {Tallest: Height 2 7/8 inches (7.3 cm)}. Chips on the foot rim to the first bottle.



Estimate:
\$1,000 / \$1,500

**5165
Group of Jade Archer's Ring and a Jadeite Dish.**

Including five jade rings in various shapes and sizes, together with a concave jadeite roundel dish. {Largest: Width 2 1/4 inches (5.7 cm)}. Condition: Some wear.



Estimate:
\$800 / \$1,200

**5169
Two Celadon Jade Snuff Bottles.**

Comprising a snuff bottle with an engraved orchid flower; and a jade snuff bottle with a round forest green stopper. {Tallest: Height 2 1/2 inches (6.3 cm)}.



Estimate:
\$4,000 / \$6,000

**5166
A Rare Chinese Tienghuang and Chicken Blood Stone Carving.**

Skillfully carved in the form of a mountain, carved in relief with a scene of a 'Shoulao' - god of longevity holding a giant peach to his right while looking at two peaches carrying youngsters on this left. The back of the stone-carved and incised with pine tree and rocks. Atop a carved fitted wood base. {Height 3 1/2 inches (8.8 cm) with base}.



Estimate:
\$800 / \$1,200

**5170
Four Chinese Peking Glass Snuff Bottles.**

Including three red dragon decorated snuff bottles in various shapes and sizes, together with a small translucent red glass snuff bottle, all with hardstone stoppers. {Tallest: Height 2 3/4 inches (6.9 cm)}.



Estimate:
\$1,500 / \$2,500

**5167
A Chinese Large Lingbi Stone Scholar's Rock.**

Of rock formation with irregular apertures throughout, the stone of dark gray tone with various gray striations, the surface highly polished, with two characters inscription and an artist signature in regular script 'Li Yu'(1843-?) on top of a carved fitted hardwood base. {H 19 1/2 x W 18 inches (50 x 46 cm)}.



Estimate:
\$800 / \$1,200

**5171
Group of Four Chinese Snuff Bottles.**

Comprising a carved celadon jade melon-form snuff bottle with coral stopper; an irregular form agate snuff bottle; a carved amethyst snuff bottle; and an inside painted glass snuff bottle. {Largest: Height approximately 2 3/4 inches (6.9 cm)}. Condition: The agate and amethyst snuff bottle without stoppers. With an unmatched short stopper.



Estimate:
\$600 / \$800

5172
Two Famille Rose Porcelain Snuff Bottles, Daoguang Mark.
Comprising: the first an oval form snuff bottle, finely enameled on both sides with birds perch on flowering trees, four-character Dao Guang mark inscribed to the recessed base; the second, an oval form snuff bottle, decorated on one side depicting an elderly scholar resting on the rock while watching a red-robed boy training a dog, the revised side painted with a standing fan holding figure watch a robed young man, sporting a toad with a string of gold coins, four-character Dao Guang mark inscribed to the recessed base.
{Height of the tallest: 3 inches (7.6 cm)}.



Estimate:
\$2,000 / \$3,000

5173
A Chinese Grisaille Landscape Brush Pot.
Slightly waisted body, the white wall painted with a continuous landscape scene in mono tone, depicting two figural heading to the mountain hermitage.
{Height 6 1/4 inches (15.8 cm)}.
Condition: The interior has minor dents.



Estimate:
\$700 / \$900

5174
Group of Three Monochrome Glaze Plates.
Comprising: The first is a celadon glaze floral decoration plate with foliated rim, inscribed with four-character apocryphal Xiang De mark to the base; the second, a powder blue glaze dish with foliated rim; the third dish is white glazed interior and the underside evenly covered with light even green glaze, four-character Cai Xiu Tang Zhi in underglaze blue inscribed within a double circle to the recessed base.
{Largest: Diameter 6 1/4 inches (15.8 cm)}.
Condition: the third dish has a approximately 2 1/2 inches hairline.
清单色釉挂盘一组



Estimate:
\$2,000 / \$3,000

5175
Chinese Square Form Clair-De-Lune Glazed Stick Neck Vase.
The vase is elegantly potted with a square form ovoid body and a tall neck, rising to a everted square rim. Each corner applied with sunken ridges, the recessed base bearing the six-character apocryphal Qianlong mark in underglaze blue seal script.
{Height 11 5/8 inches (29.5 cm)}.
Condition: A small chip on the rim.



Estimate:
\$1,000 / \$1,500

5176
A Korean Celadon Vase, Maebyeong, Incise Lotus.
Of constricted waisted body with a round shoulder to slightly curled mouth rim, covered overall with celadon green glaze, incised lotus and stem above the lappets, the bottom inscribed a maker's mark.
{Height 10 1/2 inches (26.6 cm)}.
청자연화문매병



Estimate:
\$500 / \$750

5177
Guan Type Celadon Crackle Ground Incense Burner with A Pair of Elephant Head Handles.
The wide pressed body rising from short cylinder foot to everted rim, evenly applied with a pale celadon-green glaze thinning to orange at the rim, suffused with a matrix of russet crackle all over, each side attached two abstract elephant handles with rings.
{Height 4 3/4 inches (12 cm)}.
Condition: Minor dents.

Estimate:
\$1,500 / \$2,500

5178
A Chinese Guan Type Tripod Censer.
The compressed globular body rising to tubular neck and wide flared lip, supported on three horn-shaped feet, the vessel covered entirely in soft blue hue glaze, except the tip of the feet, the rim with Japanese style Kintsukuroi gilt repair.
{Height 2 5/8 inches (6.6 cm)}.



Estimate:
\$700 / \$900

5179
Chinese Guan-Type Faceted 'Hu' Vase.
Of archaistic hu form, the pear-shape octagonal body rising from a straight foot to tapered neck flanked by a pair of lug handles, covered overall with a pale grayish-blue glaze suffused with brown iron crackles joined with finer golden crackles, the base inscribed in underglaze blue with Qianlong seal mark.
{Height 6 inches (15.2 cm)}.



Estimate:
\$800 / \$1,200

5183
Chinese Rare Jian Silver-Streaked Tea Bowl.
The deep rounded sides rising from a short foot to a grooved mouth rim, covered overall with a lustrous black glaze with iridescent slivery-blue 'hare's fur' streaks, the glaze draining short of the foot revealing the dark brown body, the rim bound with gilt metal band.
{Diameter 5 inches (12.7 cm)}.



Estimate:
\$800 / \$1,200

5180
Chinese Longquan Guan Type Mallet Vase/Bronze Stand.
Of cylindrical body rising to a canted shoulder with a tapered neck, covered overall with a silky sea-green glaze suffused with dark iron crackles, the neck, and rim bound in a gilt metal band.
{Height 7 inches (17.7 cm)}.
Condition: Wear commensurate with age.



Estimate:
\$700 / \$900

5184
Chinese Rare Jun 'Zhadou' Planter.
The compressed globular body rising to a flaring neck to an everted rim, covered overall with a vivid lavender purple glaze mottled with crimson-purple flecks, the glaze thinning to a mushroom tone at the rim, the base covered in a dark brown wash and incised with a group of characters, five drain holes on the base.
{Diameter 8 inches (20.3 cm)}.



Estimate:
\$700 / \$900

5181
Chinese Longquan Guan Type Bottle Vase.
The octagonal compressed globular body encircled by three carved grooves rising to a tall tapering neck with two raised bands in imitation of bamboo and an everted mouth rim, covered overall with a thick bluish-green glaze suffused with dark iron crackles, base incised with a three-character inscription.
{Height 9 inches (22.8 cm)}.



Estimate:
\$700 / \$900

5185
Chinese Rare Jun Ware Vase/ Bronze Stand.
Of elegant pear-shaped body rising to a slender neck with a flared rim, covered overall with a blue glaze suffused with bubbles transmuting to lavender tone, the unglazed foot revealing the reddish-brown stoneware body, mouth rim bound in a gilt-metal band, fitted with a gilt-bronze stand.
{Height 11.5 inches (29.2 cm)}.
Condition: Oxidation and patina on the rim, minor wear.



Estimate:
\$800 / \$1,200

5182
Chinese Ge Type Planter.
Of quatrefoil shape with lobed sides and everted rim, supported on four ruyi shaped legs, covered overall with a creamy glaze suffused with dark iron crackle joined by finer golden russet crackle, interior bottom with four spur marks.
{Width 6.2 inches (15.7 cm)}.



Estimate:
\$700 / \$900

5186
Chinese Ding type Molded 'Dragon' Dish.
Of rounded flaring sides, interior center crisply molded with a scally sinuous dragon surrounded by further dragons around the cavetto, covered overall in a creamy ivory-white glaze, the rim bound in a metal band.
{Diameter 11.8 inches (29.9 cm)}.
Condition: Some wear and dents appears to be from manufacturing.



Estimate:
\$700 / \$900

**5187
Chinese Ding Type Lobed Ewer.**

The lobed oval body rising to a tall waisted neck surmounted with a gallery mouth, one side applied with a dual-strap loop handle opposite a curved upright spout, the body carved with overlapping lotus petals, covered overall in an ivory glaze, the foot unglazed revealing the white body. {Height 10.5 inches (26.6 cm)}. Condition: Some cracks on the handles, the metal parts has oxidation and patina.



Estimate:
\$800 / \$1,200

**5188
Chinese Rare Peachbloom Glazed Waterpot.**

Of classic domed body with tapering sides rising to a short neck to a lipped rim, covered overall with a vivid crimson-red glaze speckled with mottled dark pink hues, the recessed white base inscribed with a poem inscribed in gilt characters. {Diameter 4.8 inches (12.1 cm)}.



Estimate:
\$800 / \$1,200

**5189
Chinese Flambe-Glazed Yuhuchun Vase.**

The pear-shaped body rising from a splayed foot to a waisted neck with a flared mouth rim, covered overall with a purplish-red glaze suffused with lavender and blue streaks, base incised with a four-character Yongzheng seal mark and covered in mottled brown glaze, fitted with a gilt bronze stand. {Height 11.3 inches (28.7 cm)}.



Estimate:
\$1,800 / \$2,500

**5190
Two Chinese Copper-Red Glaze Vases.**

The first is an unusual Langyao Ritual jingping form vase, of slender form rising from a spreading foot and surmounted by cylindrical neck set with a carinated ring, white glaze mouth rim, the exterior covered with a deep polished raspberry-red glaze, the unglazed foot ring neatly cut. The concave base bears a six-character apocryphal Kangxi underglaze blue mark, fitted carved rosewood base. The second is a slender amphora-shaped vase within the copper-red glaze, supported by a cylindrical ring, the recessed base bearing a six-character apocryphal Guangxu mark in underglaze blue, with a fitted carved base. {Height of Jingping vase: 7 3/4 inches (19.5 cm)}.



Estimate:
\$1,500 / \$2,500

**5191
Two Chinese Langyao Glaze Jars.**

The first is a small Langyao-type globular jar, the exterior covered in a dark raspberry-red glaze, thinning to white at the mouth rim. The concave base remains unglazed. The second is a footed jar, covered overall in a lustrous glaze of mottled red tone, thinning to pink at the neck, the mouth rims with white glaze, unglazed base. {Largest: Height approximately 6 inches (15.2 cm)}.



Estimate:
\$600 / \$800

**5192
Chinese Underglaze Red Porcelain Water Coupe.**

Heavily potted, the footed water pot is freely painted on the exterior in a raspberry tone with four lotus sprays, all reserved a celadon glazed ground, the base remains unglazed. {Height 2 1/2 inches (6.3 cm)}.



Estimate:
\$900 / \$1,300

5193
A Ming Dynasty Style Large Blue and White Plate.
Thickly potted plate with foliate rims, the interior central roundel painted to depict two official figures in courtyard setting under a pine tree, the rim with shaped cartouches alternating with Buddhist treasure symbols sections and various plants sections. The underside rim is freely painted and decorated with ruyi mushroom panels and plants. {Diameter: 15 1/4 inches (38.7 cm)}. Condition: Nicks and Chips on the rim.



Estimate:
\$700 / \$900

5194
Chinese Blue and White 'Three Ram' Bowl.
Of bell shape with deep rounded sides flaring to an everted rim, painted in underglaze blue with a continuous scene depicting three rams among rock works with pine, bamboo, and willow trees under a full moon, interior medallion painted with a Qiling, base with a six-character Jiajing mark. {Width 6.5 inches (16.5 cm)}.



Estimate:
\$1,000 / \$1,500

5195
Chinese Blue and White Bottle Vase, Kangxi Mark.
The globular body rising to a thin, tall neck with everted rim, the wall decorated layers of lappets and bands in deep cerulean blue, the base inscribed a four characters Kang Xi Nian Zhi mark in underglaze blue. {Height 10 inches (25.4 cm)}.



Estimate:
\$1,000 / \$1,500

5196
Chinese Blue and White Vase with Gilt-Bronze Stand.
The pear-shaped body rising to a tapering neck with a garlic bulb below a flared mouth rim, finely painted in brilliant shades of cobalt with two scholars seated in a lush landscape with their attendants and horses, all below a floral scroll band at the shoulder, the base with a six-character Chongzheng mark, fitted with a gilt-bronze stand. {Height 14.6 inches (37 cm)}.



Estimate:
\$400 / \$600

5197
Chinese Blue and White Porcelain Peony Jardiniere.
Of deep bowl form with flared rim, finely painted to the exterior wall with lotus and peony within the cartouches between the foliage, drilled hole to the bottom for drainage. {Height 12 3/4 inches (32.3 cm)}. Condition: Wear and scratches.



Estimate:
\$500 / \$800

5198
A Blue and White Porcelain Jardiniere.
Well potted with bowl form and lipped flare rim, the exterior painted with a scene of peacocks wandering in the garden amongst overhanging plum blooming branches and peonies, the bottom remains unglazed. {Height 11 5/8 inches (29.5 cm)}. Condition: Wear and scratches.



Estimate:
\$4,000 / \$6,000

5199
Large Chinese Blue and White Phoenix Peony Jar.
Of baluster body with wide cylindrical neck, finely painted with phoenixes against peony stems above the lappets, the neck and shoulder decorated with a band of floral stems, the bottom remains unglazed. {Height 15 inches (38.1 cm)}.



Estimate:
\$800 / \$1,200

5200
Chinese Orange Ground Blue and White Bottle Vase, Qianlong Mark.
The baluster body with a skinny neck and an everted rim, decorated with five wise men seeing a scroll together under a pine tree, painted with blue and white hue with gilt lines against an orange ground, the base inscribed underglaze blue Qianlong mark in the green ground. {Height 9 inches (22.8 cm)}.



Estimate:
\$800 / \$1,200

5201
Chinese Large Powder Blue-Ground Famille Verte Porcelain Baluster Vase.
Of baluster form, the large lobed vessel supported by a slightly spired foot, raising to trumpet rim, the exterior wall is finely enameled in shaped cartouches depicting mountain landscape scenes and birds perch on flowering trees scenes. All above a band of floral on a yellow ground and under a polychrome diaper pattern, the neck painted with two large rectangular panels depicting Buddhist monks and official figure and attendant, a six-character Kangxi mark inscribed to the recessed base. {Height 28 inches (71.1 cm)}.
Condition: Minor chip on the rim.

Estimate:
\$1,000 / \$1,800

5204
Chinese Famille Rose 'Three Rams' Vase/Bronze Stand.
The globular body rising from a spreading foot to a tall ribbed neck to a flaring rim, the body finely enameled with three rams in a landscape amid blossoming leafy trees and garden rocks, all between ruyi pendants bordering the shoulder and foot, the gilt ribbed neck decorated with stylized lotus blossoms amid floral scrolls on a turquoise ground, the turquoise enameled ground inscribed with an iron-red Jiaqing seal mark, fitted with a gilt bronze stand. {Height 12.3 inches (31.2 cm)}.



Estimate:
\$600 / \$800

5202
Two Chinese Famille Verte Porcelain Vessels.
The first, a bowl form with flared rim jardiniere, the exterior wall finely decorated with warriors on horseback combat scene in the mountain setting, drilled hold to the bottom for drainage; the second, a globular form fishbowl with lipped rim, the exterior wall is finely painted with four large floral shaped cartouches framed by peony heads borne on a dense ground of scrolling foliage. {Largest: Height 13 3/8 inches (33.9 cm)}.
Condition: Wear and scratches.

Estimate:
\$1,500 / \$2,500

5205
A Lime Ground Famille Rose Enameled Porcelain Ribbon Vase, Qianlong Mark.
Of ovoid body and slightly tapering neck, brightly enameled and gilt and with lotus flowers amongst scrolling foliage, all against lime ground under a band of Ruyi head pendants under the mouth rim, the shoulder, and body embellished with a molded ribbon decorated in a pink hue with auspicious floral roundels, apocryphal Qianlong underglaze blue six-character mark to the recessed bases. {Height 6 3/4 inches (17.1 cm)}.



Estimate:
\$1,000 / \$1,800

5203
Chinese Lime-Green Ground Famille Rose Vase.
Of baluster body rising to a waisted neck flanked by a pair archaic dragon handles to a flared rim, brightly enameled with lotus sprays with scrolling leafy tendrils and a band of chi-dragons around the shoulder, all reserved on a lime-green ground between ruyi heads at the rim and lappet border at the bottom, the foot encircled with a key-fret band, the turquoise base with an iron-red Daoguang seal mark, fitted with a gilt-bronze stand. {Height 11.8 inches (29.9 cm)}.

Estimate:
\$1,200 / \$1,800

5206
Famille Rose Porcelain Bowl, Daoguang mark.
Depicting three white goats under the plum bloom landscape, inscribed a Chinese poem with three seals, a six-character Daoguang mark in underglaze blue to a reentrant bottom. {Diameter 5 3/8 inches (13.6 cm)}.





Estimate:
\$2,000 / \$3,000

5207
**Pair of Copper Red Glaze
Green Ground Phoenix
Round Bowl, Daoguang mark.**

The deep rounded sides supported on a slightly tapered foot rising to a gently everted rim, the exterior decorated with iron-red roundels of a stylized phoenix, the interior with a further phoenix roundel, all reserved on an even glaze of pale grayish-green tone, the base inscribed with a six-character Daoguang mark in underglaze blue, each with fitted wood bases and boxes. {Diameter: 5 3/4 inches (14.5 cm)}.

清道光豆青地梵红团凤碗一对

Estimate:
\$800 / \$1,200

5210
**A Large Chinese Yellow
Ground Famille Rose Fish
Bowl.**

Finely painted on the exterior with birds perched on flowering trees on the yellow ground, between red and green lappets and floral ruyi bands, the rim remains unpainted.

{Height 16 inches (40.6 cm)}.
Condition: Wear and dents, paint losses.



Estimate:
\$600 / \$800

5208
**Famille Rose 'Peach' Covered
Bowl And Cover.**

The well-potted bowl with rounded sides rising from a straight foot to a slightly flared rim, the exterior enameled with a fruit-bearing peach tree, and coral color bats in flight. The dome cover decorated en suite and with a four-character Guangxu mark inside the circular finial.

{Height 3 5/8 inches (9.2 cm)}.
清光绪粉彩寿桃盖碗



Estimate:
\$500 / \$800

5211
**A Famille Rose Porcelain
Pheasants and Peony Bowl,
Daoguang Mark.**

Well potted, supported from a straight foot, raising to a flared rim, the exterior wall finely enameled with a scene of pheasants perch on rock and flowering trees issue from the grassy ground, a six-character Daoguang Mark in underglaze copper-red to recessed base.

{H 3 5/8 x W 7 1/4 inches (9.2 x 18.4 cm)}.



Estimate:
\$400 / \$600

5209
**Chinese Yellow Ground
Famille Rose Porcelain Fish
Bowls.**

Painted with flowering trees on the yellow ground below a band of Buddhist swastika and leaves with four panels of symbols, the rim decorated with flower and stems, the bottom remains unglazed.

{Height 12 inches (30.4 cm)}.
Condition: Chips on the rim, hairlines, enamel losses.



Estimate:
\$400 / \$600

5212
**Famille Rose Dragon Phoenix
Roundel Jardiniere.**

Late Qing Dynasty, Tongzhi Period. Of tapering cylindrical form, painted with large alternating dragon and phoenix roundels in copper-red glaze between floral decorations, all under a band of ruyi pendants, the flat rim with copper-red glaze diaper decorations. {Height 9 3/8 inches (23.8 cm)}. Condition: Chip to the rim and age related wear to the surface.

5213
**Turquoise Ground Famille
 Rose Porcelain Dragon
 Jardiniere.**

The exterior wall is finely decorated with two writhing dragons sinuously amid peony bones on scrolling foliates, the bands of patterns in iron-red to the rims, drilled a hole to the bottom for drainage.

{Height 11 3/4 inches (29.8 cm)}.
 Condition: Wear and dents.

Estimate:
\$400 / \$600



Estimate:
\$500 / \$800

5214
**Famille Verte Porcelain Statue
 of A Immortal and A
 Fisherman.**

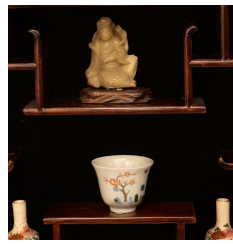
Comprising a legendary Taoist figure Liu Hai, and a sitted fisherman. The Liu Hai standing on a rocky plinth, looking down to a three-legged toad, the immortal is with joyful facial expression, wearing a colorful cape from his waist, his right hand raised holding a pearl, his left hand attached with a string with three coins.

{Tallest: Height 13 inches (33 cm)}.
 清十九世纪素三彩刘海戏金蟾像和漁翁

5215
**Large Polychrome Enameled
 Porcelain Statue of Three Star
 Gods.**

(PICK UP: PLEASE ASK ASIAN ART DEPT. FOR THREE SMALL PIECES)
 Modeled as Fuxing, Luxing, and Shouxing - the Daoist gods of Wealth, Promotion, and Longevity, each with their respective attributes.
 {Tallest: Height approximately 32 inches (81.2 cm) include base}.

Estimate:
\$1,200 / \$1,800



Estimate:
\$800 / \$1,200

5216
**Porcelain Cups and Hardstone
 Group in Display Curio
 Cabinet.**

Comprising a pair of copper-red glaze dragon teacups; a pair of yellow ground lotus motif famille rose porcelain teacup with six character Guangxu mark; a famille rose floral teacup with six-character Tongzhi mark; a pair of famille rose porcelain peony blossom tea bowls with six-character Tongzhi mark; a pair of copper-red glaze and gilt decoration 'dragons' teacups with six-character Guangxu marks; five miniature cream ground Japanese Kutani floral vases, one carved soapstone Shoulao statue; one carved hardstone seated Buddha on wood base, a pair of blue ground ducks; a pair of turquoise glaze pottery Taoist deities statues on plinths; One carved soapstone grape bearing mountain on base and a blanc de chine white glaze porcelain seated Taoist immortal figure. All arranged in a rosewood display wall cabinet.

{Case: H 25 x W 19 x D 3 3/4 inches (63.5 x 48.2 x 9.5 cm)}.
 Condition: All hardstone carvings with natural imperfections to surfaces, Porcelain cups with nicks and hairlines. Display wooden case is without glass door.
 民国瓷玉杂项多宝阁一组



Estimate:
\$600 / \$800

5217
**Famille Rose Enamelled
 Buddha Statue in a Carved
 Shrine.**

The Buddha with uttarabodhi mudra wearing an orange-red robe with gilt decorations, sitting on the double lotus pedestal with mottled blue ground, all fitted in the carved wooden shrine box with sliding glass window, the interior attached a roundel mirror against the Buddha's head.

{Height approximately 8 inches (20.3 cm) with wooden shrine case}.
 Condition: Some wooden joint stick out from the shrine case.



Estimate:
\$800 / \$1,200

5218
Collection of Chinese Bronze Bodhisattva Cloisonne and Snuff Bottle.
Comprising a flatten oval form snuff bottle with a stick neck Peking glass overlay snuff bottle with a dragon motif on a wood stand; one underglaze copper-red and blue bowl with a six-character Daoguang mark to base; one pair of cloisonné stem cup of archaic dragon and Shou roundel design; a gilt bronze Sino-Tibetan seated Bodhisattva on double lotus petal bases. All arranged in a golden curio case. {Largest: Height 5 1/2 inches (13.9 cm)}. 清十八世纪铜无量寿佛景泰蓝高足杯一组



Estimate:
\$6,000 / \$8,000

5219
A Chinese Bronze Alloy Figure of Bhaiṣajyaguru Buddha.
Possibly Ming Dynasty. Finely cast with legs neatly crossed in dhyanasana, the hands folded in dhyana mudra, the bare chest incised with a swastika Wen emblem and framed by the elegant robes with floral borders, the gently rounded face with serene expression framed by tightly-curved hair. {Height: 19 inches (48.2 cm)}. 銅藥師佛坐像



Estimate:
\$2,000 / \$3,000

5220
A Sino-Tibetan Gilt Bronze Seated Buddha on Double Lotus Base.
Case as the Medicine Buddha seated in vajraparyankasana on a double lotus throne, the right hand extended in varadamudra and holding a lotus stalk, the left hand in dhyanamudra and supporting a lotus bloom in his alms bowl, wearing a robe incised Buddhist symbols, and the bottom engraved visvavajra. {Height 11 1/2 inches (29.2 cm)}.



Estimate:
\$400 / \$600

5221
A Silver Inlaid Copper Alloy Recumbent Ox.
Possibly Warring States period. The head toward the left, with two turquoise eyes attached, the body decorated with silver inlaid ancient swirl patterns all over. {Width 4 inches (10.1 cm)}. Condition: Wear commensurate with age, patina, a little hole on the left ear.



Estimate:
\$1,000 / \$1,500

5222
A Chinese Rectangular Form Cast Bronze Incense Burner.
Of compressed rectangular body rising from four short feet, cast with two angular handles, the bottom incised a six-character mark. {Width 5 3/4 inches (14.6 cm)}. Condition: Wear and patina.



Estimate:
\$1,000 / \$1,500

5223
A Chinese Bronze Alloy Tripod Ritual Food Vessel and Cover.
Possibly Warring States Period (475 -221 BCE). The archaic vessel cast with a pair of vertical loop handles, supported on three tapered legs, the body and cover decorated with simple bow string bands, the shallow domed cover cast with three evenly spaced triangle form handles. {Height 10 1/2 inches (26.6 cm)}. Note: Ding (cauldrons) were used for cooking, storage, and ritual offerings. They are one of the most important vessels seen in Chinese ritual bronzes. The number of dings a noble owned indicated his rank.



Estimate:
\$600 / \$800

5224
Two Pairs of Chinese Embroidered Skirt Panels.
Late 19th Century to early 20th Century. Comprising a pair of skirt panels finely embroidered with a dragon and phoenix and a pair of figural and phoenix panels, all with floral borders. {12 x 32 1/2 inches (30.4 x 82.5 cm)}. Condition: Some fraying and stains.



5225
Chinese Large Black Ground Gilt Foo Dog Silk Panel.
 The large horizontal panel worked in gilt-wrapped stitches depicting phoenix and Foo dogs in various positions, all against a black ground.

{40 x 125.7 inches (101.6 x 319.2 cm)}.

Estimate:
\$1,000 / \$1,500



5226
Group of Chinese Civil Official Rank Badges and Sleeve Band.
 The first is a framed square form rank badge Kesi woven with a silver pheasant on a rocky mound above a blue sea-wave border, with cloud scrolls. The second is an un-framed Kesi woven with a polychrome pheasant on a rocky mound over the sea-wave blue ground with cloud scrolls. The third is a framed rank badge worked in couched gold thread depicting the bird, amongst waves patterned ground and auspicious object. The fourth is an embroidered and gilt floral sleeve band.
 {Size of rank badge: 12 7/8 x 12 7/8 inches (32.8 x 32.8 cm)}.

Estimate:
\$1,500 / \$2,500



5227
Attrib. to Wang Qi (1884 -1937): Set of Four Polychrome Porcelain Plaques.
 1933.
 Signed by Wang Qi.
 {42 x 10.1 inches (106.6 x 25.6 cm) each}.

Estimate:
\$8,000 / \$12,000



5228
A Chinese Eight-Panel Porcelain Mounted Carved Wood Screen.
 Each vertical panel divided into four sections inserted various rectangular blue and white porcelain plaques depicting scholars and sages interacting in a landscape, garden and interior scenes, and birds and flowers setting, all set into finely carved rosewood frames supported with a pair of Buddhist lions bracket bases.
 {Overall Height and Width: 70 x 100 inches (177.8 x 254 cm), Size of each panel: 12 1/2 x 58 3/4 inches (31.7 x 149.2 cm)}.

Estimate:
\$7,500 / \$10,000



5229
A Chinese Huanghuali and Mixwood Alter Table. QIAOTOU'AN.
 The single-panel top fitted with everted ends above the plain apron and spandrels, all raised on cylindrical legs.
 {H 34 x W 48.5 x D 15 inches (86.3 x 123.1 x 38.1 cm)}.

Estimate:
\$10,000 / \$15,000



5230
Chinese Huanghuali and Mixwood Horseshoe Armchair.
 With a waved apron, the four legs joined with stretchers, the rectangular seat with reed mat, the curved back splat with relief-carved decoration, the crescent back with scrolled ends.
 {H 39 1/4 x W 24 1/4 x D 19 inches (99.6 x 61.5 x 48.2 cm)}.
 Condition: Cracks on the arm rail.

Estimate:
\$1,000 / \$1,500



Estimate:
\$4,000 / \$6,000

**5231
Pair of Chinese Rosewood
Armchairs with Mother of
Pearl Inlaid.**

19th century.
Each armchair with a reticulated back, ruyi design with marble dream stone circular panel insert, the headrest carved openwork, spandrels, and armrests with mother of pearl inlaid to depicting floral sprays, 'shou' roundel and bats patterns, carved legs connected by rectangular stretchers and terminating with paws on balls.

{H 39 1/2 x W 24 1/2 x D 19 inches
(100 x 62.2 x 48.2 cm)}.



Estimate:
\$3,000 / \$5,000

**5232
Pair of Chinese Plain Wood
Meditation Zen Chairs Chanyi.**

Elegantly constructed with plain frames forming a low back and arms supported by straight angles posts, the large rectangular seats with wicker finish, above humpback stretchers.

{H 33 1/2 x W 29 x D 21 inches (85 x 73.6 x 53.3 cm)}.

冥想禪椅一對



Estimate:
\$15,000 / \$25,000

**5233
Double Gourd Form
Coromandel Lacquered Wall
Plaque.**

The shaped panel inlaid with tinted bone enclosing an elaborate scene of the god of longevity, deities, and immortals traveling on clouds, greeting by welcoming party in front of heavenly mansions, the waist embellished with finely carved wood ribbon with a centered by a coin form pendant, revised side with gilt floral decorated.

{Height 44.3 inches (112.5 cm)}.



Estimate:
\$1,500 / \$2,500

**5234
Pair of Chinese Carved
Cinnabar Vases.**

Of elegant baluster form, the bodies carved with the central continuous landscape, with scholars and court figures before mountains within palmette and lotus lappet borders, the necks and bases with bands of ruyi pendants form panels and floral scrolls.

{Height 17 inches (43.1 cm)}.

Condition: Wear commensurate with age.



Estimate:
\$1,000 / \$1,500

**5235
A Chinese Painted Eight
Immortals in Paradise
Gathering, Kesi Hanging Scroll.**

Finely painted in bright colors on gilt Kesi silk ground, depicting a scene of Shoulao seated on a mountain terrace surrounded by immortals and attendants, overlooking other deities, fairy ladies, and Taoist immortals scattered around the mountain where a peach tree grows from rocks, with Xiwangmu and an attendant holding a fan descending from clouds above.

{Image only: 34.5 x 65 inches (87.6 x 165.1 cm)}.

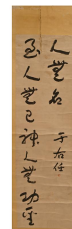
緙絲彩繪瑤臺群仙赴會圖

**5236
Pair of Kesi Couplet Hanging
Scrolls.**

Each kesi panel decorated with mustard-yellow Chinese characters against Daoism symbols in the grayish-blue ground.

{Image only: 13 1/2 x 81 inches (34.2 x 205.7 cm)}.

Estimate:
\$6,000 / \$8,000



Estimate:
\$6,000 / \$8,000

**5237
Pair of Yu Youren Calligraphy
Couplet.**

Ink on paper.

An artist seal on the second scroll.

{Image only 17 1/4 x 59 inches (43.8 x 149.8 cm)}.

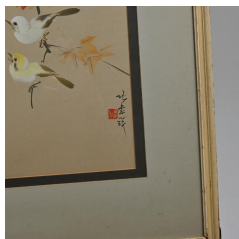
Condition: Paper tenting.



Estimate:
\$6,000 / \$8,000

5238
Large Chinese Heavenly Gods
Hanging Scroll by Anonymous
Artist.

Qing Dynasty.
Depicting various Daoist gods, deities,
warrior attendants, and a tiger amongst
cloud. Ink and color on silk.
{Image size: 67 x 33 inches (170.1 x 83.8
cm)}.
Stamp mark: Roswell Museum, Roswell
New Mexico Permanent Collection. 63
-6-9.
康熙七圣前童鬼，神尊天像，绢本设
色。



Estimate:
\$4,000 / \$6,000

5239
Attrib. to Zhang Shuqi (1900
-1957) Bird and Maple Tree.

Ink and color on paper, depicting two
birds perch on maple tree.
Signed: Zhang Shuqi in running script,
with one artist seal, reading: Shuqi.
framed and glazed.
{Image size: 13 3/4 x 10 1/2 inches (24 x
26 cm)}.
張書旂 白頭鳥和枫树 設色紙本 鏡框



Estimate:
\$2,500 / \$4,000

5240
Attributed to Luo Ping (1733
-1799) Zhong Kui the Demon
Queller.

China.
Dated by inscription to 1758.
Ink and color on paper, inscribed, dated,
and signed by the artist, with three
seals, framed and glazed.
{34 1/4 x 67 inches (87 x 170.2 cm)}.
Acquired in New York Circa 1940, and
thence by descent within the family to
the current owner.
Condition: Discoloration, creasing,
cracks, paper losses, paint losses, water
staining, minor restoration to the
losses, fading; unable to examine out of
the frame.