
MICHAAN'S AUCTIONS

Auctioneers & Appraisers



Gallery Auction
March 7, 2020
10am



Gallery Auction

*featuring fine art, furniture,
decorative arts, Asian art &
jewelry*

**Saturday, March 7, 2020
10am**

Previews

Sunday, March 1, 9am to 5pm

Friday, March 6, 12pm to 5pm

Saturday, March 7, 9am to end of auction

Furniture and Decorative Arts: Lots 1 - 124

Fine Art: Lots 141 - 249

Jewelry and Timepieces: Lots 256 - 384

Stamps and Coins: Lots 391 - 396

Asian Works of Art: Lots 401 - 570

Copyright Notice

No part of this catalog may be reproduced, stored in a retrieval system or transmitted by any form or by any means, electronic, mechanical, photocopying, recording or otherwise, without the prior written permission of Michaan's Auctions.

Michaan's Auctions bond # 71393954

Front cover: Lots 339, 181, 460, 29

Back cover: Lot 391

Michaan's Auctions

2751 Todd Street

Alameda, CA 94501

Phone: (800)380-9822 or

(510) 740-0220

Fax: (510) 749-7517

www.michaans.com

info@michaans.com

Inquiries

Automobiles

Desman Coronado

(510) 227-2515

desman@michaans.com

Asian Art

Annie Zeng

(510) 227-2536

annie@michaans.com

Coins, Stamps & Ephemera

Michael Rosenberg

(510) 227-2502

mrosenberg@michaans.com

Collectibles & Ephemera

Daniel Elizalde

(510) 227-2510

daniel@michaans.com

Fine Art

Kyrah Leal

(510) 227-2519

kyrah@michaans.com

Furniture & Decorative Arts

Jill Fenichell

(510) 227-2524

jill@michaans.com

Jewelry

Elise Coronado

(510) 227-2570

elise@michaans.com

View this catalog, additional photos and condition reports online at www.michaans.com.

Photography by Jeffrey Lee and James Strowe



Estimate:
\$300 / \$400

1
Italian Renaissance Style Oak Server.
Top with molded edge, over two short drawers, over three single door cabinets; carved decoration throughout, iron hardware.
{Approximate dimensions: 38 high x 65 1/2 wide x 17 inches deep.}
Condition: Significant wear throughout including previous insect damage and finish wear.
Key available.



Estimate:
\$500 / \$800

4
18th Century French Provincial Fruitwood Bureau Plat.
Bowed apron with one drawer and cabriole legs, protective glass top.
{Approximate dimensions: 32 1/2 high x 57 1/2 wide x 24 1/2 inches deep.}
Condition: Evidence of previous insect damage, significant repair and wear to the finish of the top surface. Various fill in repairs throughout, the piece is currently structurally sound.



Estimate:
\$300 / \$400

2
18th Century Pennsylvania German Golden Oak Kaas.
With carved decoration throughout, literal freize above the two doors which is partially illegible due to aging and wear; one door is carved with 'ANNO 1737', the other door carved with 'ANNIHARMS'.
{Approximate dimensions: 56 1/4 high x 62 1/4 wide x 22 1/2 inches deep.}
Condition: Overall wear is appropriate for the age, possible later top and other restorations. Both doors are locked.



Estimate:
\$400 / \$600

5
Carved Elm Wood Bible Box.
18th/19th century.
Top with molded edge, carved decoration to the sides of the body.
{Approximate dimensions: 8 high x 23 1/2 wide x 18 inches deep.}
Condition: Overall wear is appropriate for the age. Some previous insect damage, loss to one corner, splits in the top panels.



Estimate:
\$300 / \$400

3
Pennsylvania German Golden Oak Carved Chest.
Late 18th/early 19th century. Bench with a carved back, storage seat with original iron hardware and lock, and four architectural arch panels under the seat.
{Approximate dimensions: 30 high x 55 wide x 16 1/2 inches deep.}
Condition: Overall wear is appropriate for the age, large split to one back support.



Estimate:
\$300 / \$500

6
Stickley Style Mission Oak Desk and Chair.
Single drawer desk, with shelving to the sides concealed by slatted supports; the chair with a slat back. The chair with a Heywood Wakefield label to the underside.
{Approximate dimensions: Desk 29 1/4 high x 42 1/2 wide x 26 1/2 inches deep, chair 35 1/4 x 17 1/4 wide x 18 inches deep.}
Condition: Desk with scratches to the surface, wear to the finish, the chair with overall minor wear.



Estimate:
\$300 / \$400

3A
Carved Oak Wall Cabinet.
With a bronze relief panel to the door.
{Approximate dimensions: 42 high x 30 wide x 8 1/2 inches high.}
Condition: Very minor wear.
Key available.



Estimate:
\$300 / \$500

7
Mission Style Oak Dining Suite Consisting of Table, Sideboard, and Four Chairs.
The table with barley twist legs, the chairs with slat backs, baluster legs, and modern circle in square pattern upholstered seats. The sideboard with a mirrored back, two drawers over two single door cabinets, baluster turned legs.
{Approximate dimensions: Table 29 1/4 high x 41 3/4 deep x 14 3/4 wide, 58 1/2 inches wide when extended.}
Condition: Some nicks and dents throughout, some wear to the finish.



Estimate:
\$500 / \$800

**8
Renaissance Revival Style
Dining Room Suite.**

Mid 20th century.
Comprising a dining table with four leaves, four side chairs, and two armchairs. The table carved with foliate motifs, swags, and a shell-carved stretcher. The chairs with green riveted upholstery and similar carvings.
{Approximate dimensions: Table 30 high x 44 wide x 74 inches long, 118 inches long with leaves. Side chairs 44 1/2 high x 22 1/2 wide x 21 inches deep. Armchairs 50 high x 26 1/2 wide x 27 inches deep.}
Condition: Surface marks to the table's finish, some scuffs and wear to the base. Chair upholstery with stains and wear, frames with scuffs and scratches to the feet.



Estimate:
\$300 / \$500

**9
Renaissance Revival Style
Carved Mahogany Cupboard.**

20th century.
Carved decoration throughout, including a figural crown, putti with urns of fruit to the door panels, figural aprong, shell carved stretcher, etc.. Two door cabinet with a single drawer below.
{Approximate dimensions: 75 high x 42 wide x 18 3/4 inches deep.}
Condition: Small scratches and scuffs throughout, slight fading to the finish. The cabinet doors are locked and no key is available.



Estimate:
\$500 / \$800

**10
Renaissance Revival Style
Carved Mahogany Server.**

Four drawers, carved with various flora, figural, and shell decoration.
{Approximate dimensions: 36 high x 79 wide x 22 1/4 inches deep.}
Condition: Some light scratches to the surface, wear and finish fading to the base.



Estimate:
\$400 / \$600

**11
American Renaissance Revival
Carved Oak Hall Tree.**

Mirrored back with a single drawer and two door cabinet below; heavily carved with various foliate motifs and grotesque masks.
{Approximate dimensions: 83 high x 48 wide x 14 inches deep.}
Condition: Some scratches and wear to the surface finish. Umbrella stand inserts are missing.



Estimate:
\$500 / \$700

**12
English Georgian George
Jefferys Chatham Mahogany
Grandfather Clock.**

Chatham, England.
Late 18th/Early 19th century.
Bras dial with Roman Numeral numbering, date window, and a strike/silent dial, set in a gilt metal foliate surround. The dial is flanked by a hood with brass capped fluted columns and an arched top.
'George Jefferys Chatham' to the dial.
{Approximate dimensions: 86 high x 19 1/2 wide x 10 inches deep.}
Condition: Overall wear is very good considering the age. Some veneer loss.
With a pendulum, five included weights, and a winder.



Estimate:
\$700 / \$1,000

12A
Scottish George III Oak Cased Tall Cased Clock by Blair Flight.
Scotland.
Circa 1774-1775.
Commemorating the marriage of Ja (me)s Smith and An(n) Mor(r)is, married in Perth July 31, 1775, listed in the wedding banns of parish number 387. Their names inscribed to the center of the center dial below the second hand. The solid mahogany case with arched panel door and base panel. The hood with stop-fluted columns on the clock's hood; the face with brass spandrels surrounding the enameled chapter ring and inner quarters circle, with fine peafowl engraved within circular cut-out. Inscribed Blair Flight/ Perth toward lower dial face.
{Approximate dimensions: 85 high x 20 1/2 wide x 11 1/4 inches deep.}.
Condition: Light scratches and marks to the dial. Later brass pulls. Some signs of previous woodworm. Overall wear is very good for the age.
Pendulum, two weights, and a key included.



Estimate:
\$300 / \$400

15
Pair of Provincial Bleached Mahogany Bucket Chairs, Circa 1970.
With caned sides, square legs, 'rustic' white upholstery with orange and black accents.
{Approximate dimensions: 28 1/2 high x 25 1/4 wide x 26 inches deep.}.
Condition: Some wear to the finish, small faps in some joints.



Estimate:
\$500 / \$800

16
Baker Empire Style Mahogany Dining Suite.
Comprising a round dining table with ebonized trim, two armchairs, and two side chairs; the chairs with cream foliate pattern upholstered seats.
Baker labels to the underside.
{Approximate dimensions: Table 30 high x 46 inches diameter, each leaf adds 22 inches; armchairs 35 high x 23 1/4 wide x 22 inches deep, side chairs 35 high x 20 1/2 wide x 22 inches deep.}.
Condition: Table with some veneer chipping to the base. Chairs with minor scuffs to the legs and wear to the finish including a severe bubbling effect to one chair.
Two leaves and three pads included.



Estimate:
\$300 / \$400

13
Horner Type Carved Oak Morris Chair.
With griffin carved feet, and barley twist supports to the arms, black floral pattern upholstery.
{Approximate dimensions: 45 high x 30 wide x 33 1/4 inches deep.}.
Condition: Minor previous insect damage to the arms, very minor finish wear.



Estimate:
\$300 / \$400

17
Pair of Vintage S.S. New Amsterdam Folding Teak Lounge Chairs.
1938-1973.
With slatted back, seat, and footrest. Brass accents.
Plaque to back reads 'S.S New Amsterdam', plaque to footrest reads '1st class only'.
{Approximate dimensions: 36 high x 22 wide x 57 inches deep.}.
Condition: Wear to finish and brass, repair to one leg.



Estimate:
\$400 / \$600

14
Executive Oak Desk with Chair.
Green felt top, three drawers, two cabinets; the chair with a caned seat.
{Approximate dimensions: Desk 30 1/4 high x 63 wide x 32 inches deep, chair 44 high x 24 wide x 21 inches deep.}.
Condition: Felt top is peeling away, wear to the finish and some scuffs/nicks to the edges.



Estimate:
\$1,000 / \$1,500

18
John Hall Designs Georgian Style Mahogany Extension Dining Table.
1999.
Top with molded edge and curved corners, resting on a double pedestal base, each with four scrolled feet; two leaves included. Impressed John Hall mark and label to the underside.
{Approximate dimensions: 30 1/2 high x 52 deep x 106 inches long, each leaf adds 20 inches.}.
Condition: Light surface scratches, faux insect damage to the base.



Estimate:
\$500 / \$800

19
Neoclassical Style Carved Marble Bench with Stone Base.
Two foliate motif white stone supports make up the base.
{Approximate dimensions: 17 high x 60 wide x 14 inches deep.}.
Condition: Small chips to corners and edges.



Estimate:
\$400 / \$600

20
Painted Wrought Iron Table with White Marble Top
White marble slab on a green painted frame, set on casters.
{Approximate dimensions: 31 high x 44 1/2 wide x 33 inches deep.}.
Condition: Wear to the marble top, rust and paint loss to the frame due to weathering.



Estimate:
\$400 / \$600

21
Three Figural Garden Decorations.
Composition with a patinated stone finish; comprising a female bust on a pedestal, and two grimacing wall mounted faces.
{Approximate dimensions: Female 55 high x 9 wide x 9 1/2 inches deep, faces 25 3/4 high x 11 wide x 11 inches deep.}.
Condition: Loss to the finish layer throughout, obvious wear from being weathered outdoors.



Estimate:
\$400 / \$600

22
Pair of Outdoor Urns on Cast Iron Plinths.
Urns with a terracotta painted finish, set on green painted iron pedestals.
{Approximate dimensions: 43 1/2 high x 18 wide x 18 inches deep.}.
Condition: Some paint loss and obvious wear from being kept outdoors.



Estimate:
\$500 / \$800

23
Unusual Set of Eight Walnut Side Chairs With Three Additional.
Swiss.
Late 18th Century.
Set of eight with small arch form backs and tapered octagonal legs. Three additional chairs include a baluster slat back with a caned seat, provincial slat back with diamond, and a provincial rounded back chair.
{Approximate dimensions: Set of six 34 1/4 high x 16 1/4 wide x 14 inches deep.}.
Condition: Obvious wear including splits to most seats, scuffs to the legs,, previous insect damage, and wear to the finish. The chair backs are also unstable.



Estimate:
\$300 / \$500

24
Danish Vejle Stole & Møbelfabrik Mid Century Modern Teak Extension Dining Table.
1960s.
Designed by Henning Kjærnulf for Vejle Stole & Møbelfabrik. Two leaves can be brought out from under the surface, tapered legs. Glass panes to cover the table and leaves.
Black mark under table reads 'Vejle Stole-og Møbelfabrik Made in Denmark'.
{Approximate dimensions: 29 high x 64 1/2 long x 37 inches wide.}.
Condition: Some minor surface wear. Scuffs and dings to the legs.



25
Pair of Danish Mid-Century Modern Teak France & Son Side Tables.
 1960s.
 With raised edges, slatted shelf below, four tapered legs.
 Round 'FF' France & Son badges to the table undersides, serial 6215452 and 6215403.
 {Approximate dimensions: Tables 23 high x 29 1/2 wide x 10 1/4 inches deep.}
 Condition: Tables with some wear to the finish, a few small nicks.

Estimate:
\$400 / \$600



26
Mid-Century Modern Teak Slatted Bench.
 With six round tapered legs.
 {Approximate dimensions: 14 1/2 high x 78 3/4 long x 18 3/4 inches deep.}
 Condition: Wear to the finish mainly due to water stains, some surface marks and wear to edges.

Estimate:
\$400 / \$600



26A
Mid-Century Teak Planter.
 Metal insert, square taper legs, three slats act as a shelf and stretcher.
 {Approximate dimensions: 24 high x 39 1/2 wide x 7 3/4 inches deep.}
 Condition: Wear to finish mainly from water stains. Wear to the metal insert.

Estimate:
\$300 / \$500



27
Basic-Witz Mid-Century Modern Walnut Dresser.
 Circa 1960s.
 Five drawers, round tapered legs.
 Wood burned mark to top drawer 'Basic-Witz Waynesboro'.
 {Approximate dimensions: 45 high x 38 wide x 19 inches deep.}
 Condition: Light surface scratches and nicks throughout.

Estimate:
\$300 / \$500



28
Lane Furniture Co. Teak Five Drawer Chest and a Six Drawer Dresser with Vanity Mirror.
 'Lane / Altavista, Virginia' impressed to the drawers.
 {Approximate dimensions: Five drawer chest 44 high x 36 wide x 18 inches deep, six drawer chest not including mirror 31 high x 60 wide x 19 inches deep.}
 Condition: Wear to the top surface finishes, the five drawer chest with black rubber adhesive.

Estimate:
\$300 / \$500



29
Charles and Ray Eames 438 Lounge Chair and 423 Ottoman.
 Circa 2000.
 Padded black leather lounge chair and ottoman with aluminum base.
 Labels to the underside.
 {Approximate dimensions: Chair 39 high x 26 wide x 26 inches deep, ottoman 18 1/2 high x 22 wide x 22 inches deep.}
 Condition: Minor wear to leather with no cracking or loss. Light scratches and wear to the metal.

Estimate:
\$1,200 / \$1,800



29A
Marcel Guillemand French Art Deco Period Figured Wood Buffet or Bar.
 Paris, France.
 Circa 1930.
 Marcel Guillemand (1887-1986).
 Book-matched burlled Amboyna wood.* Angled rectangular form, with raised central platform over two drawers. Cabinets to either side, stepped slabs to sides. Wedge-shaped handles throughout.
 Provenance: MCM Unique, Fountain Hills, Arizona.
 Condition: Some minor cracking to the veneer throughout. Several very small scuffs and dings.
 *Purchasers from overseas may

Estimate:
\$3,000 / \$4,000



Estimate:
\$700 / \$1,000

30
Morris Furniture of Los Angeles Ebonized Dining Table and Four Chairs.
Los Angeles, CA
Circa 1965.
Partially ebonized finish, C-form legs with slatted supports; the chairs with ebonized frames, blue upholstery with white sprigs.
{Approximate dimensions: Table including leaves 29 1/2 high x 96 wide x 39 inches deep, chairs 35 high x 21 wide x 26 inches deep.}.
Condition: Minor wear and finish to the ebonized finish, mainly the leaf ends. Some veneer chipping, scuffs to the base. Chairs with some scuffs to the legs.
Table with two leaves.



Estimate:
\$500 / \$800

33
Rustic Redwood Tiered Table.
Organic style form, with a large surface and several tiers of smaller surfaces below.
{Approximate dimensions: 40 1/2 high x 40 1/2 wide x 29 inches deep.}.
Condition: Scuffs to the edges, mainly on the top surface. Some cracking throughout.



Estimate:
\$300 / \$400

34
Brass and Glass Three Tier Shelving Unit.
With tinted inset glass panes.
{Approximate dimensions: 29 high x 54 1/4 wide x 18 1/4 inches deep.}.
Condition: Patina to the brass.



Estimate:
\$600 / \$800

31
Morris Furniture of California Mid-Century Ebonized Buffet with Four Serving Trays.
Circa 1965.
Partially ebonized finish; the top section with sliding glass doors, two shelves, and a mirrored back; the bottom two door cabinet with a single drawer and shelf. Four matching trays with chrome accents '50 SF 95' stamped to the back. Trays marked 'WOODPECKER WOODWARE / LOS ANGELES USA / MADE IN JAPAN'.
{Approximate dimensions: 64 1/2 high x 32 1/4 wide x 18 1/4 inches deep.}.
Condition: One handle is missing, the other is detached. Small veneer chips and surface wear, scuffs to the feet. One tray with a split, patina to metal accents.



Estimate:
\$700 / \$1,000

35
Eugenia Butler Oak Puzzle Chair.
1990.
Asymmetrical form, with black and gray painted decoration.
'Eugenia Butler, 0014, GRIS CHAIR, 9/5/90' in gold paint to the underside.
{Approximate dimensions: 37 high x 18 1/2 wide x 17 1/4 inches deep.}.
Condition: Surface marks and nicks, some scraping to the paint.



Estimate:
\$600 / \$900

32
Morris Furniture of California Mid-Century Ebonized Sideboard.
Circa 1965.
Partially ebonized finish, central sliding glass door cabinet flanked by a single door cabinet on one side and three drawers on the other. Wood burned Morris mark to drawer interior.
{Approximate dimensions: 33 3/4 high x 60 1/2 wide x 18 1/2 inches deep.}.
Condition: Some wear and marks to the finish, cabinet door handles are all missing.



Estimate:
\$400 / \$600

36
Rick Wall Design Tripod Chair.
Arlington, Virginia.
1989.
Bone back with a black metal support, red upholstered seat, ebonized wood frame.
Sticker to underside reads 'F.L. Wall 1989, Red/Black'.
{Approximate dimensions: 28 1/2 high x 24 1/4 wide x 18 inches deep.}.
Condition: Fading and water stains to the upholstery.



Estimate:
\$600 / \$900

37
Mateo Grassi Set of Six 'Coral' Dining Chairs.

1980s.
Black metal frames with black leather seats and back, with black stitching. 'matteo grassi' embossed to the leather on the chair backsides. Sticker to underside reads 'matteo grassi, leather craftsman, MADE IN ITALY'.
{Approximate dimensions: 33 high x 18 wide x 20 inches deep.}.
Condition: Some minor scuffs and marks to the leather, significant marks to the side rails of one chair, small scuffs to the legs.



Estimate:
\$500 / \$800

38
Arper Italian Black Leather Set of Six Side Chairs With a Modern Glass and Metal Dining Table.

The chairs with round polished chrome legs, black upholstery to the seats and backs. The dining table with a black metal frame and glass top.
Chairs embossed with 'arper, MADE IN ITALY' to the undersides.
{Approximate dimensions: Chairs 35 high x 16 wide x 18 inches deep, table 30 high x 87 1/4 long x 38 3/4 inches wide.}.
Condition: Chairs with very minor wear, one seat with possible red paint spots, another with a small scuff to the edge of the seat. The glass of the table is only supported by a beam in the middle so it is not stable. Some scuffs and wear to the painted finish.



Estimate:
\$2,000 / \$2,500

39
Castelli Italian Modernist Shelving Unit.

Six tiers separated by light wood dividers, each section with a round brushed metal storage container on ball bearing swivels. Brushed metal plaque reads, 'A. CASTELLI, 93, 3'.
{Approximate dimensions: 66 1/2 high x 33 wide x 20 1/4 inches deep.}.
Condition: Some loss to the paint of the black metal base.



Estimate:
\$500 / \$800

40
American Bench-Made Teak Drop Leaf Table.
The top with hinged leaves, set on a pedestal base with six feet. Metal hardware is minimal, most pieces are joined with wood pegs/joints.
{Approximate dimensions: 30 high x 42 long x 24 inches wide, 42 wide with leaves extended.}.
Condition: Very good overall, several small scuffs to the base.



Estimate:
\$300 / \$400

40A
Modern Coffee Table with Kidney Shaped Glass and Driftwood Base.
{Approximate dimensions: 13 2/4 high x 30 3/4 wide x 20 inches deep.}.
Condition: Minor wear to the glass top.



Estimate:
\$400 / \$500

41
Modernist Style Pair of Bucket Chairs.
Curved wood back continuous with the arms, black vinyl seats, black metal round legs.
{Approximate dimensions: 31 high x 20 1/2 wide x 20 inches deep.}.
Condition: Some marks and scuffs to the finish, mainly along the top edge.



Estimate:
\$1,000 / \$1,500

42
Brutalist Steel and Glass Coffee Table.
Circa 1990s.
The brushed steel base with abstract sculptural attachments, rectangular glass top.
{Approximate dimensions: 17 high x 54 wide x 32 inches deep.}.
Condition: Two round support sections of the base with rust,



Estimate:
\$400 / \$600

42A
Brutalist Style Steel Candle Prick Pair.
Round tilted cups for the candles, set above a circle, resting on triangular pyramid bases.
{Approximate dimensions: 25 1/2 high x 7 3/4 wide x 7 inches deep.}.
Condition: Some potential surface rust to one cup interior.



Estimate:
\$600 / \$800

46
Pair of Gilt Bronze Gothic Revival Torcheres.
Nine electrified lights hung with cut crystal lusters, set on relief decorated stems, each supported by a base with three griffins.
{Approximate dimensions: 79 high x 18 inches diameter.}.
Condition: Several glass cups under the lights are missing. Potential loss to lusters. Patina to the gilt bronze.



Estimate:
\$400 / \$600

43
Modern Brutalist Style Brushed Steel Floor Lamp with Art Glass Shade.
Convex glass shade partially framed in steel set on two steel beams all supported by a round base with four small feet.
{Approximate dimensions: 79 high x 21 inches wide.}.
Condition: Minimal wear.



Estimate:
\$300 / \$500

47
Mid-Century Amber and Clear Glass Prism Chandelier
Each prism with recessed sides, brass arms and body.
{Approximate dimensions: 20 high x 16 inches diameter.}.
Condition: Some chipping to the edges and corners.



Estimate:
\$600 / \$900

44
McGuire Set of Nine Chairs.
Eight side chairs and one armchair; bleached bamboo frames, light brown bamboo pattern upholstered backs and seat cushions.
McGuire plaques to the underside.
{Approximate dimensions: 33 1/2 high x 19 wide x 23 inches deep.}.
Condition: Some scuffs and wear to the feet.



Estimate:
\$300 / \$400

48
Contemporary Studio Art Glass Hanging Light Fixture, Signed.
Domed brown glass shade with purple accents, three lights.
Signed 'Carol Hall 2010'.
{Approximate dimensions: 21 high x 21 inches diameter.}.
Condition: Several small surface scratches.



Estimate:
\$400 / \$600

45
Victorian Gilt Bronze Twelve Light Chandelier.
Late 19th century.
Hung with cut crystal lusters and accented with pressed glass prisms.
{Approximate dimensions: 42 high x 30 inches diameter.}.
Condition: Patina to the gilt bronze, potential loss to the lusters, a couple arms are angled slightly out of position, though there are no apparent bends to the metal.



Estimate:
\$300 / \$400

49
Vistosi Murano Art Glass Lamp.
Murano, Italy.
1974.
The entire lamp is constructed of white opaque glass, mainly circular in form with a convex center and an oval open base.
'Vistosi 74' incised to the bottom edge.
{Approximate dimensions: 22 high x 20 wide x 12 inches deep.}.
Condition: Minimal wear to lamp with some very light surface marks, only the hardware elements show signs of age.



Estimate:
\$200 / \$300

50
Art Nouveau Bronze Figural Table Lamp Pair After Lucien Alliot.
Lucien Alliot (French, 1877-1967). Each lamp with a standing female figures on round bases each supported by four ball feet. One figure holds a rose, the other holds a fan. Lacking shades. Both figures signed 'L. Alliot'. {Approximate dimensions: 21 inches high.}. Condition: Some patina and light wear throughout. The four ball feet have a tendency to bend at the base, but can be bent back.



Estimate:
\$500 / \$600

51
Persian Wool Carpet.
Central medallion on a red ground with a blue main border, ivory and light blue inner and outer borders; floral motif throughout. {Approximate dimensions: 12 feet 2 inches x 8 feet 1 inch.}. Condition: Some loss to the fringe, several areas where the pile has worn through.



Estimate:
\$500 / \$600

52
Iranian Kashmar Wool Carpet.
Central medallion on a red ground with blue spandrels, blue main border, urn and foliate motif throughout. Label to corner. {Approximate dimensions: 13 feet x 9 feet 7 inches.}. Condition: Some apparent fading, loss to fringe,



Estimate:
\$400 / \$600

53
Persian Wool Rug.
Multi-medallion motif in red, blue, and black on a red ground. {Approximate dimensions: 10 feet 7 inches x 7 feet.}. Condition: Loss and damage to fringe, previous moth damage, a few spots where the pile has worn thin, fraying to the edges.



Estimate:
\$400 / \$600

54
Persian Wool Carpet.
Central ivory medallion on a red ground; blue, white, and red banded spandrels; ivory main border; stylized floral motif throughout. {Approximate dimensions: 11 feet 8 inches x 9 feet.}. Condition: Some fraying to one end, slight bleeding of red into the border.



Estimate:
\$300 / \$500

55
Pair of Gorham Chantilly-Grand Weighted Sterling Silver Candlesticks.
Decorated with a repoussé and chased floral motif. 'Lion passant, anchor, G, Sterling, A602' to both undersides. {Approximate dimensions: 10 3/4 high x 6 1/2 inches diameter.}. Condition: One cup is slightly bent. Some tarnish and light wear.



Estimate:
\$300 / \$500

56
Gorham Sterling Silver Swan Bowl.
'Gorham, Durgin Hallmark, Sterling, 33' to the underside. {Approximate weighable silver: 7.8403 troy oz.} {Approximate dimensions: 6 3/8 high x 8 long x 4 1/2 inches wide.}. Condition: Some tarnish, light wear to the underside.



Estimate:
\$400 / \$600

57
Various Gorham and Tiffany Sterling Silver Flatware.
Comprising 2 Tiffany & Co. luncheon knives, 2 Tiffany & Co. knives with sterling blades, 5 Tiffany & Co. Audubon pattern demitasse spoons, Tiffany & Co. napkin ring, 10 Gorham pickle forks, 11 Gorham demitasse spoons, 8 Gorham butter spreaders, 7 Gorham bouillon spoons, 1 Gorham ladle, 2 Gorham teaspoons, and 1 Gorham grapefruit spoon. Various monograms. (50 pieces total). {Approximate weighable silver: 29.9281 troy oz.}. Condition: Some tarnish and wear.



Estimate:
\$300 / \$500

58
Tiffany Sterling
Chrysanthemum and Floral
Silverplate Flatware.
Late 19th century.
Chrysanthemum pattern comprising 12 ice cream forks and 1 luncheon fork; floral pattern comprising 5 dinner forks and 6 table spoons. Both monogrammed. (24 piece total.)
Chrysanthemum set marked 'TIFFANY & CO., STERLING, PAT. 1880, M', floral set marked 'TIFFANY & CO., PATENT 1884'.
{Approximate weighable silver: 13.4044 troy oz.}
Condition: Some tarnish and wear.



Estimate:
\$300 / \$400

59
Two Tiffany & Co. Ribbed
Bowls with Additional.
The two bowls with a small open container with a repousse foliate motif.
Larger bowl marked '6000 / TIFFANY & CO. / MAKERS / SILVER-SOLDERED / 110 / 1 / 6', smaller bowl marked 'TIFFANY & CO. / 3798 MAKERS 110 / SILVER-SOLDERED-E.P. / N', open container marked 'TIFFANY & CO. / 8568 MAKERS 165 / SILVER-SOLDERED - E.P. / M'.
{Approximate dimensions: Larger bowl 2 high x 7 3/4 wide x 5 3/4 inches deep, smaller bowl 5 5/8 wide x 5 inches deep, small container 1 1/4 high x 2 inches diameter.}
Condition: Significant tarnish, some signs of wear.



Estimate:
\$400 / \$600

60
Tiffany, Young, & Ellis Sterling
Flatware and Silverplate Mug.
New York, NY.
1841-1853.
Comprising 1 tapered monogrammed mug, 1 table spoon, four soup spoons, and three teaspoons.
Mug marked 'TIFFANY, YOUNG, & ELLIS / J.C.M.', flatware marked 'TIFFANY, YOUNG, & ELLIS / STERLING'.
{Approximate weighable silver: 9.9479 troy oz.}
Condition: Some tarnish and wear.



Estimate:
\$300 / \$400

61
Three Georg Jensen Style
Sterling Items with a Becht &
Hartl Coffee Pot.
Denmark and Rhode Island.
Comprising a Jensen sugar and creamer both with wood handles, a Jensen pair of sugar tongs, and a Becht & Hartl coffee pot with a hinged lid and an ebonized wood handle.
Creamer marked bottom George Jensen in oval, 925.S, GI, Denmark, Sterling, 41A. Sugar marked bottom Georg Jensen in oval, 925.S, Denmark, Sterling, 41A, W.B.W. from A.E.W. 1936 along the rim of sugar and creamer. Tongs marked Denmark, GI, Sterling, W. Coffee pot marked bottom BH in oval, Sterling, 2241, 3.
{Approximate weighable silver including wood handles: 19.9802 troy oz.}
Condition: Excellent, some very small surface abrasions.



Estimate:
\$600 / \$900

62
Collection of Mid 19th Century
New York and Connecticut
Coin Silver Spoons.
Early/mid 19th century.
Makers include Gerardus Boyce (New York, 1795-1880), Nathaniel Francis (New York), John B. Ginochio (New York), Floyd Smith, S. Brown, Rockwell, Fox, and other; with various monograms and patterns.
{Approximate weighable silver: 41.5872 troy oz.}
Condition: Some tarnish and wear.
Provenance: From a Smithtown New York estate & hence by descent.



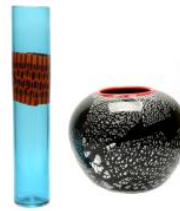
Estimate:
\$250 / \$400

63
Suite of Baccarat Embassy
Stemware
Comprising tall water goblets {height 5 3/4 inches}, seven champagnes/tall sherberts, and seven caret glasses {height 5 inches} (25) [some chipping]



Estimate:
\$300 / \$400

64
Lot of Crystal Champagne Flutes, Murano and Speck of Blue.
Comprising six Murano flutes and twelve blue accented glasses. The Murano glasses with etched decoration, gilt flecks, and twisted stems. The blue accented glasses with blue glass where the stem meets the foot, and faint vertical blue stripes.
{Approximate dimensions: Murano flutes 10 inches high, blue flutes 8 inches high.}
Condition: Small chip to blue glass rim.



Estimate:
\$300 / \$500

67
Two Contemporary Studio Glass Vases, Signed.
2011/2010.
Round opaque black glass bowl with silver flake and red rimmed mouth, tall transparent blue glass vase with and orange band accented with blue and green.
Bowl inscribed with 'JW 11' to the underside, vase inscribed with 'SPP 10' to the underside.
{Approximate dimensions: Bowl 8 high x 9 inches diameter, vase 14 3/4 high x 2 3/4 inches diameter.}
Condition: Minimal wear.



Estimate:
\$400 / \$600

65
Tiffany Favrile Small Dishes, Set of Five.
New York.
Early 20th century.
Small dishes with recessed centers; iridescent hues of green, purple, and yellow.
All with inscriptions to the undersides, 'L.C.T. Favrile'.
{Approximate dimensions: 7 inches diameter.}
Condition: Some scratches to the undersides, no apparent cracks or chips.



Estimate:
\$800 / \$1,000

68
Stoddard New Hampshire Glassworks Brown's Catalina Medicinal/Bitters Bottle.
Stoddard, New Hampshire.
1860-1872.
Brown glass bottle with 'Brown's Catalina' in raised letters to the side of the body.
{Approximate dimensions: 11 high x 3 1/2 inches diameter.}
Condition: Two chips around the mouth. Small chip to the base rim.



Estimate:
\$600 / \$900

66
Steuben Rosaline Chinese Pattern Acid Etched Vase.
Circa 1920.
Rosaline chinoiserie design on alabaster glass.
{Approximate dimensions: 9 high x 7 3/8 inches diameter.}
Condition: Minimal wear to the underside.



Estimate:
\$300 / \$400

69
Moorcroft Arts and Crafts Pottery Pomegranate Vase and Bowl.
1928-1949.
With pomegranate and berry motifs on dark blue.
Both impressed with 'MADE IN ENGLAND / MOORCROFT / POTTER TO THE QUEEN'. The bowl with green glaze to the underside, the vase with blue glaze to the underside.
{Approximate dimensions: Vase 7 1/2 high x 4 1/2 inches diameter, bowl 3 high x 6 1/8 inches diameter.}
Condition: Minimal wear. Miniscule white paint spot to the bowl interior.



Estimate:
\$400 / \$600

69A
Reuge Automaton Pagoda Form Lipstick Dispenser.
Mid 20th century.
Hexagonal pagoda of silvered metal and green glazed ceramic; with six various storages that open while playing 'Speak Softly, Love' and reveals a silver metal lyre in the middle, they close while playing waltz from Dr. Zhivago.
Black and red Reduge sticker to the underside, 'Made in Italy' sticker, 'Patent Simu Florence' engraved to the underside.
{Approximate dimensions: 16 high x 8 1/2 inches diameter.}.
Condition: Some wear to the silver metal.



Estimate:
\$300 / \$400

70
Kazuko Matthews Contemporary Studio Pottery Vessel.
California.
Flat form with two flat loop handles; black painted decoration on a gray ground with diagonal stripes painted to one side and spots painted to the other.
Signature to the underside.
{Approximate dimensions: 28 high x 14 1/4 wide x 4 inches deep.}.
Condition: No chips or cracks, minimal wear.



Estimate:
\$300 / \$400

71
Two Dale Roush Glazed Ceramic Planters.
Each with a conical underside, meaning the piece is always tilted. Each with three loop handles, and partially glazed with incised decoration.
{Approximate dimensions: 9 1/2 high x 11 inches diameter, 10 1/2 x 10 inches diameter.}.
Condition: Several small chips.



Estimate:
\$300 / \$500

72
Laddie John Dill Ceramic Birdbath Basin.
Round form with rough ridges, black and gray glazed.
{Approximate dimensions: 7 high x 25 inches diameter.}.
Condition: Minor wear and dust, shallow cracking to the center of the basin.



Estimate:
\$500 / \$800

73
French Art Deco Period Bronze Bookends of Pierrot and Pierrette.
On stepped black marble bases.
{Approximate dimensions: 7 1/2 high x 4 wide x 5 5/8 inches deep.}.
Condition: Patina to the bronze, small chips to the marble.



Estimate:
\$300 / \$400

74
Federal Style Gilt Wood Framed Bull's-Eye Girandole Mirror.
20th century.
Convex mirror in a round frame accented with small balls around the recessed edge, crowned with an eagle perched on a rock, and adorned with two candleholders to the bottom.
{Approximate dimensions: 48 high x 31 1/2 inches wide.}.
Condition: Gilt with patinated finish, some wax deposits from candles. Loss to the wood where the foliate carving meets the candleholder.



Estimate:
\$300 / \$400

75
French Lelièvre Gilt-Wood Barometer and Thermometer.
Elongated hexagonal frame with a lyre form crown bearing the thermometer and foliate decoration to the frame.
Sticker to the front reads '12, Rue de l'Hotel-de-Ville / Vincennes / LELIÉVRE / OPTICIEN-FABRICANT / Fourniseur du Génie et des Ponts-Chaussées'.
{Approximate dimensions: 34 1/4 high x 20 inches wide.}.
Condition: Significant cracking, loss, and fading to the barometer dial. Some cracking and patina to the giltwood frame. All tubes and instruments appear intact.



Estimate:
\$300 / \$400

76
French Regence Style Gilt Bronze Figural Mantel Clock.
Gilt bronze case crowned by a cherub with a globe; the white enamel dial with black Roman numeral numbering.
'534 R' to the dial reverse.
{Approximate dimensions: 18 high x 9 3/4 wide x 5 1/4 inches deep.}.
Condition: Some surface marks, minor wear, and small corrosion spots to the case. The dial with minor cracking and chipping, some darkening.
Lacking pendulum.



Estimate:
\$300 / \$400

79
Early 20th Century Frosted Glass Converted Oil Lamp with a Grape Motif.
Early 20th century.
Now electrified, glass body and shade with grape motif in relief, and a spelter grape motif base.
Shade marked, 'Patent 40712, May 31 1910'. Wick control knob marked 'Made in U.S. of America'.
{Approximate dimensions: 25 high x 13 inches diameter.}.
Condition: Patina to the metal, small chips to the shades edge. The support the shade lays on is a bit flimsy and tilted.



Estimate:
\$600 / \$800

77
Italian Art Nouveau Brass and Glass Wall Sconce,
Two main lights with five additional lights bearing glass bead covers; surrounded by pressed glass flowers and buds sprouting from brass leaves and stems
{Approximate dimensions: 28 high x 54 wide x 14 inches deep.}.
Condition: Some minor bends and patina to the brass



Estimate:
\$300 / \$500

80
Three Tiffany Studios Bronze Scalloped Bowls 1713.
One with a slightly different weight, size, and finish.
'Tiffany Studios, New York, 1713' to the undersides.
{Approximate dimensions: 1 1/2 high x 4 5/8 inches diameter.}.
Condition: Patina to the bronze, small green spot to one bowl.



Estimate:
\$300 / \$400

78
French Neoclassical Three Piece Table Garniture.
France.
Second half 19th century.
Comprising a mantle clock and a pair of urns, all in green marble and gilt bronze. The clock with a handpainted dial decorated with floral swags, and a window below revealing the pendulum.
'A Debut / Fabit / medaille' painted to the dial. Movement marked with round 'Japy Freres & Cie Medaille D'Honneur' mark, 'A. Debut / 491, 6'.
{Approximate dimensions: Clock 16 1/4 high x 15 wide x 5 3/4 inches deep, urns 11 1/4 high x 4 1/4 wide x 3 1/2 inches deep.}.
Condition: Some minor patina to the bronze, the dial with one small chip to the winder hole, miniscule chips to marble corners.



Estimate:
\$400 / \$600

81
WMF Art Nouveau Pewter Vase.
Germany.
Circa 1905.
Two handled vase with an open bottom, decorated with two maidens in relief on opposing sides. Glass insert.
Marked 'WMFB, I/O, OX' to the underside.
{Approximate dimensions: 14 1/4 high x 7 3/4 inches wide.}.
Condition: Some tarnish and darkening to the surface. Apparent rubbing to the relief decoration.
Wear to the underside.



Estimate:
\$400 / \$600

82
Pair of Jugendstil Brass Candlesticks.
Each with two candleholders, the Art Nouveau styled frames accented with floral decoration.
{Approximate dimensions: 10 5/8 high x 7 1/4 inches wide.}.
Condition: Very minor wear. White deposits to a few crevasses.



Estimate:
\$300 / \$500

83
Two Continental Plated Brass Art Nouveau Trays.

Early 20th century.
Both trays decorated with a hammered art nouveau floral motif, and accented with female faces to both ends. The smaller tray has a handle and a round foot, the larger tray with four curved feet.
{Approximate dimensions: Larger tray 2 1/2 high x 14 1/4 wide x 9 inches deep, smaller tray 2 1/4 high x 9 5/8 wide x 5 1/2 inches deep.}
Condition: Some loss to plating mainly on the smaller tray, light tarnish throughout.



Estimate:
\$400 / \$600

86
Six Various Canes.

Comprising a Chinese style carved composition cane with a horn handle, wood cane with a monogrammed silver-plated handle circa 1900, a spiral carved wood cane with spotted decoration and a figural handle, a simple bamboo walking stick, wood cane with a gilt-bronze handle, and a wood cane with a composition dog head handle.
{Approximate dimensions: All are close in length, longest 35 3/4 inches, shortest 34 1/2 inches.}
Condition: Marks to canes and wear from minor use, cane with gilt-bronze handle has significant marks to the wood.



Estimate:
\$300 / \$400

84
Art Nouveau Pewter Figural Table Lamp.

Circa 1900.
Two lights held up by a female angel figure standing on an orb, resting on a tapered round base with floral and figural decoration in relief.
{Approximate dimensions: 27 1/4 high x 8 1/2 inches diameter.}
Condition: Surface wear and patina, lacking shade.



Estimate:
\$300 / \$500

85
Pair of Brutalist Brass Bouquets Circa 1970.

New York.
1965 - 1975.
Flowers of blue glass shards with brass bulbs, leaves and stems, emergent from black laminated wood bases.
{Approximate dimensions: 27 inches high.}
Condition: Paint loss to the bases, some patina and wear to the brass. Cleaning is suggested.



Estimate:
\$300 / \$400

87
Mt. Tamalpais Walking Stick with Figural Stag Handle.

Composition stag handle with a gilt metal band below, the stick with a 'Mt. Tamalpais' badge showing someone hiking. The stick portion can break down into two sections, and the handle can be removed as well.
Gilt metal band marked 'Copyright sign, TFM'.
{Approximate dimensions: 50 inches long.}
Condition: Antler has a crack at its base and is a bit loose. Lightly used overall.



Estimate:
\$300 / \$400

88
Six Wood Walking Canes and a Carved Figural Shoe Horn.

Comprising 4 plain wood canes with hook handles, wood cane mounted with various German badges and plaques, stick cane with a knob handle, and a shoehorn with a composite dog head handle.
{Approximate dimensions: Longest cane 36 1/4 inches long, shortest cane 32 inches long, shoehorn 21 1/2 inches long.}
Condition: Minor wear,



Estimate:
\$400 / \$500

89
Three Antique Wood and Iron Whaling Harpoons.
Long wood handles wrapped in rope, with iron spear portions.
{Approximate dimensions: All three are close in length, shortest 75 1/4 inches long, longest 80 inches long.}
Condition: Wear and evidence of use throughout, including rust to the iron and significant weathering to the wood.



Estimate:
\$300 / \$400

90
Five Various Kukri.
Comprising a long bone handle Kukri marked 'Tempered Steel, Made in India'; short wood handle Kukri marked 'Gorkha Army 113'; a dark horn handled Kukri marked 'India' with incised decoration to the blade, with Karda; a dark horn handled Kukri with incised decoration to the blade, with Karda and Chakmak; and a carved horn handle Kukri with Karda and Chakmak, the sheath with filigree work and inset glass stones. All with sheathes.
{Approximate dimensions: Longest 17 3/4 inches long, shortest 10 7/8 inches long.}
Condition: Some wear to blades, handles, and sheathes throughout.



Estimate:
\$300 / \$400

91
Meriden Firearms Double Barrel Percussion Shotgun.
Early 20th century.
Some carved grip to the stock and forestock.
Marked with 'THE MERIDEN FIREARMS CO.' and 'MF'D BY THE MERIDEN FIREARMS CO. MERIDEN CT. PAT'D JULY 8 1907'.
{Approximate dimensions: 47 inches long.}
Condition: Some rust, overall wear appropriate for the age.



Estimate:
\$400 / \$600

92
Harper's Ferry Rifle Model 1842 Shortened.
1851.
The barrel and wood under the barrel have both been cut. After the civil war many of these guns were shortened and resold.
Marked with 'Harpers Ferry 1851', an Eagle perched over 'U.S.', and 'U.S.' to the butt stock. Several carved letters to the stock.
{Approximate dimensions: 44 inches long.}
Condition: Shortened barrel and wood under the barrel, other potential modifications. There are two holes through the stock and grip.



Estimate:
\$700 / \$1,000

93
Stag and Moose Skull Mounts with Antlers.
{Approximate dimensions: Stag 20 high x 21 1/4 wide x 11 inches deep, 45 high x 35 wide x 24 inches deep.}
Condition: Moose skull with some small splits, loss to one point.



Estimate:
\$300 / \$400

94
American 19th Century Double Ox Yoke with Iron Hardware.
The oak yoke of bracket form, with delicate incised X designs within rectangles, framing the monogram SB.
'SB' incised into yoke center, either side of the iron ring.
{Approximate dimensions: 20 1/4 high x 49 wide x 5 1/2 inches deep.}
Condition: Some cracking to the wood, rust and patina to the iron.



Estimate:
\$400 / \$600

95
Four Vintage Painted Cast Iron Toys and Banks.

Comprising a Humpty Dumpty bank; mechanical swan carriage with rider, the swans head and rider both are animated when the piece is in motion; a Overland Circus cart with a rider, two horses, and a pig figure; and a single horse carriage with a driver and passenger. All pieces appear to have their original paint. {Approximate dimensions: Humpty Dumpty 9 3/4 high x 6 inches wide, swan carriage 7 high x 9 1/4 inches long, Overland Circus 9 1/2 high x 15 inches long, carriage 6 high x 14 inches long.}.
Condition: Apparent loss to reins on Overland Circus toy. Paint loss, surface wear, and some apparent rust throughout.



Estimate:
\$1,500 / \$2,000

96
Large Bebe Jumeau Doll.

France.
Circa 1920s.
Curly brown hair, brown glass eyes, white and pink silk outfit, black shoes. Jointed hands, elbows, shoulders, knees, and hips. Defined teeth and pink cameo earrings. 'Tete Jumeau' stamped in red to the back of the neck, '15' impressed below. Bebe Jumeau sticker with loss to the lower back. {Approximate dimensions: 34 inches tall.}.
Condition: Wear to the painted body, mainly around the joints. The hair is very loose. Clothing with minimal wear and stains.



Estimate:
\$300 / \$500

97
16th Century Style Suit of Armor.

Third quarter 20th century.
With blue velvet trim, standing on an oak pedestal with a brass plaque reading '16th Century Full Plate Armor'.
'Made in Canada' sticker to the interior. The helmet and areas of armor with an anvil mark/three hearts stamped. {Approximate dimensions: 77 high x 32 wide x 19 inches deep.}.
Condition: Some spots of rust, minor wear to the pedestal.



Estimate:
\$800 / \$1,200

98
Kaster & Co. 'The Autopiano' Upright Mahogany Case Pianola, With Rolls.

London, England.
Early 20th century.
With five small boxes of rolls and a box of piping.
Brass inlaid plaque reads 'THE "AUTOPIANO", KASTNER & CO. LTD / HOPKINSON'. Serial to backside '69379'. {Approximate dimensions: 49 high x 59 1/2 wide x 27 1/4 inches deep.}.
Condition: Scratches to the finish, mainly to the front under the keyboard. Small chips and wear to the case, mainly around the edges and corners.



Estimate:
\$300 / \$400

99
Micael Deconet 1754 Labeled Violin.

Circa 1900.
Interior label reads 'Micael Deconet Fecit Venetiis 1754'. {Approximate dimensions: 22 1/2 long x 8 1/4 inches wide.}.
Condition: Interior dowel has come loose and is rattling around the interior. Some wear to the case with no apparent loss or cracking. With black plastic hardcase.



Estimate:
\$600 / \$900

100
Klotz Style Violin with Two Bows.

Late 19th/early 20th century.
One bow lacking bow hair.
Label to interior reads 'Josef Klotz Mittenwalde 1795'. Brand to back reads 'Klotz'. Bow with bow hair marked 'Tourte'. {Approximate dimensions: 22 1/2 long x 8 inches wide.}.
Condition: Minor wear appropriate for the age.
With hard brown leather case.



Estimate:
\$400 / \$600

101
Trefflé Gervais American Violin.
Boston, MA.
Late 19th/early 20th century.
Apparent later bridge.
Interior label reads 'Trefflé Gervais, Boston Mass, Repaired 1917'.
Bridge marked 'Aubert A Mirecourt, France'.
{Approximate dimensions: 22 3/4 long x 8 1/8 inches wide.}.
Condition: Light wear appropriate for the age.
Chin rest attached, shoulder rest included, with black 'Max' case.



Estimate:
\$300 / \$500

102
Herman Lowendall Stamped and Labeled German Violin.
Early 20th century.
With two bows, one lacking hair, the other stamped with 'Tourte', and a black hard case.
'Herman Lowendall, Berlin, in oval' branded to the interior, 'Herman Lowendall Berlin, Reproduction of Antonius Stradavarius 1731' paper label to the interior.
{Approximate dimensions: 24 1/4 long x 8 1/8 inches wide.}.
Condition: Some wear to the finish, later bridge is likely.



Estimate:
\$300 / \$400

103
KEF Model 105/3 Reference Series Pair of Speakers.
1989-1994.
{Approximate dimensions: 43 3/4 high x 11 1/8 wide x 26 1/4 inches deep.}.
Condition: Very minor wear to the screens. The speakers have not been tested.



Estimate:
\$300 / \$400

104
Collection of Villedieu and Stockli Netsal Copper Cookware.

Villedieu comprising two saucepans with lids, frying pan, tapered pot, saute pan, flat handled pot with lid, stock pot, oval pan, two small covered oval pots, and a steamer pot with porcelain pot insert lid included. Also included is a Stockli Netstal Swiss fondue pot with stand and burner.
All pieces with appropriate marks.
Condition: Evidence of use and wear, no apparent dents or loss.



Estimate:
\$800 / \$1,200

104A
Manly P. Hall "Encyclopedic Outline of...Symbolical Philosophy" with Various Ephemera.

"An Encyclopedic Outline of Masonic, Hermetic, Qabbalistic and Rosicrucian Symbolical Philosophy: Theosophical Edition", Manly P. Hall, Illustrations by J. Augustus Knapp, Printed by H.S. Crocker Company Inc. San Francisco, 1928. White vellum binding, brown paper cover, protective hard sleeve. Additional ephemera includes "The Universal One" by Walter Russell; "The Russell Genero-Radiative Concept" by Walter Russell; Mark Twain Memorial Foundation Inc. roster with Thomas J. Watson listed; and a Western Union invitation to the Founders meeting of One World Freedom, from Walter Russell to Dr. Robert Good, and three photos of the bust of Roosevelt by Walter Russell circa 1942.
Condition: The book with wear to the cover edges and corners, the interior in excellent condition.



Estimate:
\$300 / \$400

105
Seth Thomas Ticometer Model A741 for Time Controlled Indicators Co. Pat. 1933.

Circa 1933.
Moving map driving aid. Clock and map housed in a black metal case, with a hard carrying case.
{Approximate dimensions: 4 1/4 high x 7 1/2 wide x 1 7/8 inches deep.}.
Condition: Small marks to the metal, wear to the case.
With some instructional paperwork.



Estimate:
\$500 / \$800

106
Papua New Guinea Trobriand Islands Carved Wood Figural Lime Spatula.

Carved dark wood, with a seated figure finial and shallow carved decoration to the blade. With a black metal stand.
{Approximate dimensions: 11 3/4 inches long.}
Condition: Very light wear to the blade edges.



Estimate:
\$300 / \$400

109
Folk Art Hooked Rug with Roosters.

Foliage motif on a black ground; the border with roosters and flowers on a beige ground.
{Approximate dimensions: 8 feet 2 inches x 5 feet 2 inches.}
Condition: mInor fraying to the edges.



Estimate:
\$300 / \$500

107
Papua New Guinea Carved Wood Figural Pounder.

With a black laminated wood base.
{Approximate dimensions not including the base: 24 1/2 inches tall.}
Condition: Some patina and minor wear.



Estimate:
\$500 / \$800

110
Two Navajo Rugs.

Mid 20th century. Geometric designs in red, white, black, cream, and brown. One with a red ground, the other with a cream ground
{Approximate dimensions: Red ground 7 feet 2 inches x 3 feet 4 inches, cream ground 7 feet x 3 feet 10 inches.}
Condition: Some faint staining to the cream ground rug, minor wear overall.



Estimate:
\$300 / \$400

107A
Nepalese Wood Carving, Crouching Tiger Devouring a Man.

On a black painted wood base.
{Approximate dimensions including the base: 18 3/4 high x 18 inches long.}
Condition: Wear and patina to the wood.



Estimate:
\$400 / \$500

111
Pakistani Tekke Bokhara Style Wool Rug.

Multi-medallion motif in orange, white, and black on a red ground. Label to corner.
{Approximate dimensions: 9 feet 8 inches x 6 feet 2 inches.}
Condition: Some loss to the fringe,



Estimate:
\$600 / \$800

108
Folk Art Figural Weathervane.

Painted wood redcoat figure standing on a white painted metal weathervane with a black painted metal base.
{Approximate dimensions: 22 1/2 high x 15 1/4 inches deep.}
Condition: Some paint loss, mainly to the arms. Some spots of rust. Crack to the face. Apparent loss to both feet. The visor of the helmet.



Estimate:
\$300 / \$500

112
Tibetan Hand Woven Green to Ochre Carpet

Pale green border with an ochre ground accented with pale green and yellow floral decoratoin.
{Approximate dimensions: 19 feet x 11 feet 11 inches.}
Condition: Possible fading, a couple small indentations from furniture feet.



113
Oushak Wool Carpet.
Red and white foliate motif on a pale green ground.
{Approximate dimensions: 13 feet 3 inches x 9 feet 11 inches.}
Condition: Potential fading, faint blue stain.

Estimate:
\$500 / \$800



118
Kazak Wool Rug.
Three central medallions on a red ground with a geometric animal motif, cream main border with blue inner and outer borders.
{Approximate dimensions: 4 feet 11 inches x 3 feet 3 inches.}
Condition: Some loss to the fringe, some warping to the edges.

Estimate:
\$400 / \$600



114
Oushak Wool Rug.
Foliage motif in pale green and red on a beige ground.
{Approximate dimensions: 10 feet 3 inches x 6 feet 1 inch.}
Condition: Apparent fading, some loss to the fringe.

Estimate:
\$300 / \$500



119
Bokkhara Wool Rug.
Multi-medallion motif in purple, orange, green, white, and red on a red ground.
{Approximate dimensions: 7 feet 7 inches x 4 feet 2 inches.}
Condition: The rug is warped out of shape giving it a lopsided appearance.

Estimate:
\$300 / \$500



115
Berber Woven Rug.
Striped geometric motif in blue, white, and orange.
{Approximate dimensions: 8 feet 3 inches x 5 feet 9 inches.}
Condition: Hole to corner, apparent repairs throughout with smaller holes and tears.

Estimate:
\$400 / \$600



120
Victorian Needlepoint Pictorial Wall Hanging.
Depicting various toys, animals, and other child related items.
1907 to the middle.
{Approximate dimensions: 4 feet 2 inches x 5 feet 2 inches.}
Condition: No apparent damage, some potential fading/darkening to the light ground.

Estimate:
\$500 / \$800



116
Large Axminster Type Carpet.
Very dense floral motif on an ivory ground.
{Approximate dimensions: 16 feet 3 inches x 11 feet 5 inches.}
Condition: Minor wear overall, some fading, needs cleaning.

Estimate:
\$400 / \$600



121
Hand-Woven Tapestry, Landscape Scene.
Forest landscape with birds in the foreground, river and village to the middle ground, and a snowy mountain in the background; floral motif border.
{Approximate dimensions: 4 feet 11 inches high x 6 feet 6 inches wide.}
Condition: Very minor fading to color, some small separations to the seams.

Estimate:
\$300 / \$400



117
Pakistani Bokhara Style Wool Rug.
Multi-medallion motif in white, orange, red, and black on a red ground.
{Approximate dimensions: 10 feet 3 inches x 8 feet 1 inch.}
Condition: Minimal wear.

Estimate:
\$400 / \$500



Estimate:
\$400 / \$600

122
**Jean-Michel Folon (1934-2005),
'Face a Face', Serigraph on
Aluminum.**
Circa 1971.
In a round blue frame, from a series of
300. Produced by 'L'Atelier
Marquet a Paris'.
Signed 'Folon' in black enamel.
French label to the reverse details
origin and background information.
{Approximate dimensions: 19 3/4
inches diameter.}.
Condition: Several very small
scratches to the blue ground.



Estimate:
\$600 / \$800

123
**Road to Singapore Framed
Colored Lithograph,**
{Approximate dimensions in frame,
46 x 32 inches}.
(Paramount, 1940). One Sheet.
Morgan Litho-Corp, Ohio, circa 1940



Estimate:
\$600 / \$800

124
**To Catch a Thief (Paramount,
1955). Half Sheet Style A.**
Mounted on linen.
{Approximate dimensions of poster,
22 x 28 inches}.



Estimate:
\$500 / \$700

141
WILLEM HENDRIKS JR.
(Dutch 1888-1966)
"Cottage by the Pond"
Oil on canvas.
16 1/4 x 20 1/4 inches; Frame: 24
1/2 x 27 7/8 inches.
Signed lower right: W. Hendriks.



Estimate:
\$1,500 / \$2,500

142
MAX LEON MOREAU
(Belgian 1902-1992)
"Orientaliste Figure in Landscape"
Mixed Media on paper.
37 x 23 inches; frame:43 x 29
inches.
Signed and dated lower right: Max
Moreau 1950.



Estimate:
\$1,500 / \$2,000

143
After JOSHUA REYNOLDS
(British 1723-1792)
"Portrait of Christina Baroness
Donoughmore"
Oil on canvas.
50 x 40 inches; Frame: 61 1/4 x 51
inches.
Unsigned, annotated verso with
information on the sitter.



Estimate:
\$400 / \$600

144
HANS NEUMANN
(German 1973-1957)
"Soldier"
Pencil drawing.
Sight: 12 1/2 x 16 7/8 inches; Frame:
20 1/2 x 26 1/2 inches.
Signed Hans Neumann, dated and
annotated in German lower left.



Estimate:
\$800 / \$1,200

145
JAMES MCINTOSH PATRICK
(Scottish 1907-1998)
"Windy Day Falls Angus"
Watercolor and pencil on paper.
Sight: 9 3/4 x 14 1/4 inches; frame:
19 x 23 1/2 inches.
Signed and dated lower right:
McIntosh Patrick 82. Titled verso on
gallery label.



Estimate:
\$1,000 / \$1,500

146
FEODOR VON LUERZER
(Austrian / American 1851-1913)
"Moose on the River Bank"
Oil on canvas.
24 x 16 inches; Frame: 30 x 22
inches.
Signed and dated lower right: F V
Luerzer 1907.



147
JAMES MCINTOSH PATRICK
 (Scottish 1907-1998)
 "Landscape with Trees"
 Watercolor on paper.
 Sight: 19 1/2 x 21 3/4 inches; Frame:
 25 x 32 1/4 inches.
 Signed lower right: McIntosh Patrick.

Estimate:
\$1,500 / \$2,500



152
After PAUL GAUGUIN
 (French 1848-1903)
 "La Orano Maria"
 Oil on canvas.
 36 x 24 inches; frame: 40 x 28
 inches.
 NOTES: ***20th Century
 reproduction***

Estimate:
\$400 / \$600



148
**Style of EDOUARD LEON
 CORTES**
 (French 1882-1969)
 "Paris Street Scene"
 Oil on canvas.
 23 7/8 x 32 inches; Frame: 31 3/8 x
 39 1/4 inches.
 Bears signature lower right: E.
 Cortes.

Estimate:
\$2,000 / \$4,000



153
EUROPEAN SCHOOL
 (20th century)
 "Sailing Ship"
 Oil on panel.
 11 3/4 x 17 3/4 inches; Frame: 16
 1/2 x 22 3/8 inches.
 Signed illegibly lower right.

Estimate:
\$300 / \$500



149
**After ISIDORE JULES
 BONHEUR**
 (French 1827-1901)
 "Hound attacking a Boar"
 Bronze.
 14 x 22 x 8 1/4 inches.
 Bears signature on the base right
 edge: Isidore Bonheur.

Estimate:
\$800 / \$1,200



154
WILLIAM KEITH
 (American 1838-1911)
 "Pond Amongst Trees"
 Oil on canvas.
 25 x 30 inches; frame: 41 x 36
 inches.
 Signed lower right: W. Keith S.F.
 INSCRIPTIONS: Annotated verso:
 Property of H. H. Hart.
 CONDITION: Small tear in the lower
 right corner and would benefit from a
 cleaning. Not examined under black
 light. Please contact Fine Arts
 Department for full condition report.

Estimate:
\$3,000 / \$5,000



150
After CHRISTOPHE FRATIN
 (French 1801-1864)
 "Two Cows"
 Bronze on stone base.
 Including base: 13 1/2 x 19 x 11
 inches.
 Bears signature on the rock behind
 the seated cow: Fratin.

Estimate:
\$700 / \$900



155
HERBERT SARTELLE
 (American 1885-1955)
 "Mountain Lake"
 Oil on canvas.
 25 1/4 x 30 inches; Frame: 30 3/4 x
 35 5/8 inches.
 Signed lower right: H. Sartelle

Estimate:
\$500 / \$700



151
JAMES MCINTOSH PATRICK
 (Scottish 1907-1998)
 "Reflections, Millhill, Carse of
 Gowrie"
 Watercolor.
 Sight: 21 x 16 inches; frame: 33 1/2
 x 29 inches.
 Signed lower right: McIntosh Patrick.
 Titled verso on gallery label.

Estimate:
\$1,500 / \$2,500



156
CALIFORNIA SCHOOL
(20th century)
"Yosemite"
Oil on canvas.
18 x 31 1/4 inches; Frame: 21 1/4 x
34 3/8 inches.
Unsigned.

Estimate:
\$400 / \$600



157
WILLIAM KEITH
(American 1838-1911)
"Figures Walking on Path with
Sheep"
Oil on canvas.
30 x 40 inches; Frame: 56 x 47
inches.
Signed lower left: W. Keith S.F.
Annotated verso: Property of H H
Hart.
Provenance: Purchased in the early
20th century, passed through the
family by descent.

Estimate:
\$6,000 / \$8,000



158
ADAM SHERRIFF SCOTT
(Canadian 1887-1980)
"Forest Landscape"
Oil on canvas.
20 1/8 x 26 1/8 inches; Frame: 26 x
32 inches.
Signed lower right: A. Sherriff Scott
RCA.

Estimate:
\$500 / \$700



159
LEONARD LESTER
(American 1870-1952)
"Coastal Hills"
Oil on canvas.
34 x 20 inches; 38 1/2 x 24 inches.
Signed lower left: Leonard Lester.
CONDITION: In overall good
condition. Not inspected under black
light. Please contact Fine Arts
Department for full condition report.

Estimate:
\$4,000 / \$6,000



Estimate:
\$5,000 / \$7,000

160
JOHN GEORGE BROWN
(American 1831-1913)
"The Alarm" (Thrilling Moment)
Oil on panel.
21 1/8 x 15 1/2 inches; Frame: 27
1/4 x 22 1/4 inches.
Signed and dated lower right: J.G.
Brown, N.A. 1880; with the
inscription J.F. Brown and Thrilling
Moment in an unknown hand (on a
handwritten label affixed to the
reverse).
Provenance: Purchased at Sotheby's
New York, March 14, 2001 lot 37;
was offered again at Sotheby's New
York October 03, 2013 (auction
labels verso).



Estimate:
\$400 / \$600

161
ADAM SHERRIFF SCOTT
(Canadian 1887-1980)
"Portrait of a Woman"
Oil on canvas.
14 3/8 x 12 1/4 inches; Frame: 19
3/8 x 17 3/8 inches.
Signed lower right: A. Sherriff Scott
RCA.



Estimate:
\$300 / \$400

162
**Attributed to FRANK LUCIEN
HEATH**
(American 1857-1921)
"Monterey"
Oil on masonite.
10 x 12 1/8 inches; Frame: 13 5/8 x
15 1/2 inches.
Bears signature lower left: F. Heath.



Estimate:
\$1,200 / \$1,800

163
Attributed to JOHN WESLEY JARVIS
(American 1780-1840)
"Portrait of a Man" (Traditionally identified as John Quincy Adams (1767-1848))
Oil on canvas.
30 x 25 inches; Frame: 37 3/4 x 32 inches.
Unsigned.
Provenance: Mrs. Hughes, Mobile, Alabama, Mary H. Sully, Philadelphia, John Levy Galleries, New York, 1941, Newhouse Galleries, New York, 1952, North Carolina Museum of Art, Raleigh, North Carolina (by purchase), purchased at Christie's on January 20, 2012 lot 286.
Exhibited: New York, John Levy Galleries, "The Mary H. Sully collection of American Paintings, 26 November- 31 December 1941.
Literature: W.R. Valentine, "Catalogue of Paintings: Including Three Sets of Tapestries" (Raleigh, North Carolina, 1956), no 21. North Carolina Museum of Art, "American Paintings to 1900: Catalogue of Paintings" (Raleigh, North Carolina, 1967), no. 33.
Condition: Some damage along the top of the gilt frame (about 12 inches).



Estimate:
\$3,000 / \$5,000

166
ANTONIO JACOBSEN
(American 1850-1921)
"Cunard Steamship Campania at Sea"
Oil on canvas.
22 1/2 x 36 inches; Frame: 28 1/2 x 42 1/4 inches.
Unsigned.
Provenance: Purchased from the Vallejo Gallery in Newport Beach CA in 2003; painting comes with a Certificate of Authenticity from the gallery.
CONDITION: Was restored in 2005 by the Oakland Museum (painting comes with a copy of the restoration report).
Notes: This painting was featured in American Art Review April 2013 issue in an ad for Kensington-Stobart Gallery MA.



Estimate:
\$2,000 / \$2,500

167
LASLETT POTT
(American 1837-1898)
"Woman Reading"
Oil on canvas.
14 3/8 x 19 7/8 inches; Frame: 19 5/8 x 25 1/4 inches.
Signed and dated bottom center: Laslett J. Pott, 1876.
Findlay Galleries, Chicago IL label verso.



Estimate:
\$400 / \$600

164
MARTELLA CONE LANE
(American 1875-1962)
"Redwood grove"
Oil on artist board.
10 1/8 x 7 1/8 inches; Frame: 13 1/2 x 10 1/2 inches.
Signed lower right: M. Lane.



Estimate:
\$800 / \$1,200

168
LEO JANSEN
(American 1930-1980)
"Nude"
Oil on canvas.
36 x 18 inches; Frame: 42 1/4 x 24 3/8 inches.
Signed lower right: Leo Jansen; signed with artist finger print verso: Leo Jansen with copyright stamp and stamped signature.



Estimate:
\$400 / \$600

165
AMERICAN SCHOOL
(Late 19th century)
"Fort Dearburn 1804"
Watercolor.
Sight: 7 1/2 x 10 7/8 inches; Frame: 14 3/4 x 18 inches.
Signed and dated lower right: L. Mahoney 1897; titled lower left: Fort Dearburn- 1804.



Estimate:
\$300 / \$400

169
WILLIAM BLACKMAN
(American b. 1930)
"Crashing Waves"
Oil on canvas.
36 1/8 x 24 1/4 inches; Frame: 38 7/8 x 27 inches.
Signed lower right: Wm. Blackman; artist copyright stamp verso.



170
FREDERICK JAMES MALLEY
(American 1875-1964)
"Donner Lake"
Oil on board.
9 1/8 x 22 1/8 inches; Frame: 11 3/4 x 24 3/4 inches.
Signed lower right: F. Malley.
Label verso from Gumps San Francisco CA.

Estimate:
\$400 / \$600



171
LEO JANSEN
(American 1930-1980)
"Seated Nude"
Oil on canvas.
24 x 18 inches; Frame: 34 5/8 x 28 3/8 inches.
Signed lower right: Leo Jansen;
artist stamped signature verso: Leo Jansen.

Estimate:
\$800 / \$1,200



172
HARRISON GODWIN
(American Early 20th century)
"Map of San Francisco Showing Principal and Places of Interest"
Lithograph laid on board.
26 x 33 inches; frame: 29 x 38 inches.
Annotated: Copyright 1927.
CONDITION: Overall good condition with even yellowing of lithograph.
Contact Fine Arts Department for full condition report.

Estimate:
\$500 / \$700



173
BENNETT BRADBURY
(American 1914-1991)
"Eureka Fishing Shacks"
Oil on canvas.
16 x 20 inches; Frame: 23 x 27 inches.
Signed lower right: Bennett Bradbury.
Inscription verso: Bennett Bradbury # 1275 "Eureka Fishing Shacks".
CONDITION: In overall good condition. Not inspected under black light. Please contact Fine Arts Department for full condition report.

Estimate:
\$400 / \$600



174
KRESZENZ (CYNTHIA) GUZEVICH SOMMERS
(American / German 1923-2014)
"Study of Dogs"
Oil on canvas.
24 1/8 x 20 1/4 inches; Frame: 34 3/8 x 30 1/4 inches.
Signed lower right: K. Guzevich.

Estimate:
\$1,000 / \$1,500



175
FERNAND PIERRE
(Haitian 1919-2002)
"Herd of Giraffe" and "Magical Fruit Tree"
Oil on masonite.
Same measurements for both. 36 X 12 inches; Frame: 41 x 17 inches.
Signed bottom right: Fer. Pierre.
Signed bottom center: Fer. Pierre.
Provenance: From the collection of world renowned Worthington Gallery, Chicago.

Estimate:
\$700 / \$900



179
Attributed to HIROSHI MIZUNO
(Japanese late 20th century)
"Floral Still Life"
Acrylic impasto on canvas.
17 3/4 x 14 7/8 inches; Frame: 22 1/8 x 19 3/8 inches.
Illegibly signed lower right with label verso in printed characters.

Estimate:
\$700 / \$900



180
GIUSEPPE GAMBINO
(Italian 1928-1997)
"Periferia" (Periphery)
Oil on canvas.
19 3/4 x 23 3/4 inches; Frame: 24 3/8 x 28 inches.
Signed lower right: Gambino; signed and titled verso: Gambino "Periferia".

Estimate:
\$2,500 / \$3,500



Estimate:
\$800 / \$1,400

181
CARLO CANEVARI
(Italian 1922-1996)
"Figures Holding a Canopy"
Oil on wood panel.
17 1/2 x 8 3/4 inches; Frame: 21 1/2 x 12 7/8 inches.
Signed lower right: Carlo Canevari; signed and dated verso along the left edge of the panel: Carlo Canevari. Stamped verso top of the panel Florence Art Gallery; 3 Via Tornabuoni- Florence (Italy).
CONDITION: In overall good condition, some surface soiling from where something has dripped on the panel, it does look like it can be cleaned off. *was not examined under black light.



Estimate:
\$800 / \$1,200

185
JOHN COPNALL
(British 1928-2007)
"Juan de Retamá, 1965"
Mixed media on board (oil and plaster).
15 5/8 x 12 inches.
Titled upper right corner in red marker: Retamá; signed and titled verso: "No. 6 por John Copnall "Juan de Retamá" 1965".
Label verso from Galeria Juana Mordo, Madrid.



Estimate:
\$800 / \$1,200

182
ALAIN THOMAS
(French b. 1942)
"Paysage au Moulin"
Oil on masonite.
14 x 10 1/2 inches; Frame: 18 3/8 x 15 1/4 inches.
Signed upper left corner: Alain Thomas; annotated, signed and titled verso: 5 fig; Alain Thomas "Paysage au Moulin".
Zantman Art Galleries label verso upper left corner.



Estimate:
\$400 / \$600

186
SALVADOR DALI
(Spanish 1904-1989)
"Monument to the Ideal Doctor"
Lithograph in colors.
Sheet: 29 1/2 x 21 1/8 inches; Frame: 43 1/2 x 34 3/4 inches.
Signed lower right: Dali; numbered lower left: E.A.
Certificate of authenticity verso from Galerie du Monde, Beverly Hills CA.



Estimate:
\$400 / \$600

183
GUILLAUME COUFFIGNAL
(French b. 1964)
"Théâtre, 2014"
Bronze.
19 7/8 x 13 1/2 x 7 1/4 inches.
Signed on the base: Couffignal.



Estimate:
\$3,000 / \$5,000

187
JOAN MIRO
(Spanish 1893-1983)
"L'Homme au Balancier"
Color etching, aquatint, and carborundum on paper.
Sheet: 26 7/8 x 19 1/2 inches; Frame: 38 x 30 1/4 inches.
Signed in pencil lower right: Miro and numbered lower left: H.C. (aside from the ed. 75)
CONDITION: In overall good condition, was not examined out of the frame due as it is floating in the frame. There is some foxing in the upper left corner at the edge of the sheet. Speck of foxing in the center of the right edge of the sheet.



Estimate:
\$1,000 / \$2,000

184
A.R. PENCK
(German 1939-2017)
"Aus der kindlichen in die pubertäre phase" (From the childish to the pubescent phase)
Aquatint printed in colors on wove paper.
Sight: 33 x 23 1/2 inches; Frame: 43 1/2 x 32 1/4 inches.
Signed lower right: AR Penck and numbered lower left: 4/30.



Estimate:
\$300 / \$400

188
After WASSILY KANDINSKY
(Russian 1866-1944)
"Signes" (exhibition poster)
Offset lithograph
Sheet: 23 3/8 x 31 1/4 inches; Frame: 25 7/8 x 33 5/8 inches.
Bears signature in the image lower left.



189
SALVADOR DALI
 (Spanish 1904-1989)
 "Pantocrator- Christ in his majesty"
 Color lithograph.
 Sheet: 29 5/8 x 21 1/4 inches;
 Frame: 40 7/8 x 32 1/4 inches.
 Signed lower right: Dali and
 numbered lower left: 1/150.

Estimate:
\$400 / \$600



193
YOSSI STERN
 (Israeli 1923-1992)
 "Paper Boys"
 Oil on canvas.
 24 1/4 x 20 1/4 inches; Frame: 31 x
 26 3/4 inches.
 Signed initials lower left.

Estimate:
\$300 / \$400



190
NORMAN ADAMS
 (British 1927-2005)
 "Study at Resipole"
 Watercolor.
 Sheet: 8 1/8 x 9 3/4 inches.
 Signed initials and dated lower right:
 NA 68; titled lower left: Study at
 Resipole.

Estimate:
\$300 / \$500



194
RON VAN DONGEN
 (Dutch b. 1961)
 "Papaver Somniferum, 1996"
 Gelatin silver print.
 Sheet: 13 3/4 x 11 inches; Frame:
 Signed in pencil lower right in
 margin; titled and dated in pencil
 with the photographer's 'Friends of
 Photography 1998' copyright stamp
 on verso.

Estimate:
\$500 / \$700



191
**EDUARDO ALVARADO
 SÁNCHEZ-CORTÉS**
 (Spanish 20th century)
 "The Painter I wanted to be"
 Watercolor.
 Sheet: 11 5/8 x 8 1/8 inches; Frame:
 17 7/8 x 14 inches.
 Signed initials and dated lower right:
 EASC 2004, dedicated lower left: To
 Kim Frohsin; titled along the bottom
 of the sheet: "The Painted I wanted
 to be".

Estimate:
\$400 / \$600



195
KIM FROHSIN
 (American b. 1961)
 "Thrifty Three"
 Mixed media on wood.
 8 x 8 inches.
 Titled, dated and signed verso:
 "Thrifty Three" 2016, Kim Frohsin.

Estimate:
\$1,000 / \$2,000



192
After TAMARA DE LEMPICKA
 (Polish 1889-1980)
 "Femme a la Colombe" and
 "Printemps"
 Serigraph.
 Sight: 17 1/2 x 12 3/4 inches; Frame:
 28 3/8 x 24 3/8 inches. Sight: 17 1/2
 x 13 inches; Frame: 28 3/8 x 24 3/8
 inches.
 Stamped lower right: Tamara de
 Lempicka SPADEM; numbered
 lower left: 141/175. Stamped lower
 right: Tamara de Lempicks
 SPADEM.

Estimate:
\$1,500 / \$2,000



196
EMILY BROCK
 (American b. 1945)
 "Gallery"
 Mixed media glass assemblage
 sculpture.
 12 1/4 x 15 1/8 x 15 1/4 inches.
 Signed, titled and dated on sign: E.
 Brock, Gallery, 1990.

Estimate:
\$1,500 / \$2,000



197
STEVEN BIGLER
 (American b. 1946)
 "Couple, Female in Foreground"
 Oil on canvas.
 20 1/4 x 25 1/8 inches; Frame: 21 3/8 x 26 3/8 inches.
 Unsigned, titled and dated verso on backing board: "Couple, Female in Foreground" 1985; Contemporary Realist Gallery San Francisco CA label verso upper right corner with full cataloging.

Estimate:
\$750 / \$950



198
COSTA VAVGIAKIS
 (American 20/21st century)
 "Portrait of Alison" 1996
 Charcoal on paper.
 Sheet: 67 1/2 x 48 inches; Frame: 71 3/8 x 50 1/2 inches.
 No visible signature.
 Provenance: Hackett Freedman Gallery San Francisco CA label verso upper right corner.

Estimate:
\$1,000 / \$2,000



199
RICHARD RYAN
 (American b. 1950)
 "Still life"
 Oil on canvas.
 Including thin wood frame: 55 7/8 x 63 inches.
 Titled, dated and signed verso: "Still Life", OC (oil on canvas), 91", Richard Ryan.
 Provenance: Two labels verso from Contemporary Realist Gallery, San Francisco CA and Hackett Freedman Gallery San Francisco CA.

Estimate:
\$1,000 / \$2,000



200
DANIEL CAMP
 (American 20th century)
 "Abigail"
 Watercolor.
 Including frame: 41 1/2 x 26 1/4 inches.
 Signed lower right: Daniel M. Camp.

Estimate:
\$400 / \$600



201
JAMES COIGNARD
 (French 1925-2008)
 "Untitled"
 Mixed media print.
 Sheet: 39 5/8 x 25 1/2 inches;
 Frame: 47 5/8 x 33 3/8 inches.
 Signed lower right J. Coignard and numbered 13/75 lower left.

Estimate:
\$400 / \$600



202
DALE CHIHULY
 (American b. 1941)
 "Untitled"
 Watercolor and acrylic on paper.
 Sheet: 30 x 22 1/2 inches; Frame: 35 1/2 x 28 inches.
 Signed in the bottom center: Chihuly.
 Notes: There is no glass in the frame; the paper is exposed.

Estimate:
\$2,000 / \$4,000



203
MARVIN LIPOFSKY
 (American b. 1938)
 "Untitled"
 Monotype.
 Sheet: 30 1/8 x 22 1/2 inches;
 Frame: 33 7/8 x 26 1/4 inches.
 Signed and dated lower right: Lipofsky 1991 annotated lower left: Monotype.

Estimate:
\$400 / \$600



204
CHRISTOPHER CHARLES CURTIS
 (American b. 1981)
 "Seven of Cups"
 Mixed media.
 6 x 4 inches; Frame: 15 1/8 x 12 1/4 inches.
 Artist label verso with work information: Seven of Cups by artist Christopher Charles Curtis
 Meanings: Fantasy, illusion, wishful, thinking, choices.

Estimate:
\$300 / \$400



205
NANCY GENN
 (American 20th century)
 "Ostia-Antica, 1990" and "Tiber, 1990"
 Vitreograph.
 Sheet: 41 1/2 x 29 1/8 inches;
 Frame: 46 1/4 x 33 3/4 inches.
 Sheet: 41 x 29 1/8 inches; Frame: 46 3/8 x 33 3/4 inches.
 Signed and dated lower right: Nancy Genn 1990; titled bottom center: "Ostia-Antica" and numbered lower left: 6/40. Signed and dated lower right: Nancy Genn 1990; titled bottom center Tiber and numbered lower left: 6/40.

Estimate:
\$600 / \$800



206
JACK ZAJAC
 (American b. 1929)
 "Mountain Cloud #2, 1997"
 Bronze
 22 x 10 x 7 inches.
 Signed and numbered along the base: Zajac, 7/9.

Estimate:
\$700 / \$900



207
RICHARD BLAKE SHAW
 (American b. 1941)
 "Untitled #1 1994-95"
 Porcelain with decal overglaze.
 17 1/2 x 13 3/4 inches; Shadow box frame: 20 1/8 x 16 1/4 x 1 3/8 inches.
 Dedicated and dated verso upper left corner of stretcher bar. Braunstein / Quay Gallery San Francisco CA label verso top stretcher bar.

Estimate:
\$1,000 / \$1,500



208
MARVIN LIPOFSKY
 (American b. 1938)
 "St. Louis Print"
 Lithograph diptych (in one frame).
 Overall: 45 x 30 inches; Frame: 48 x 32 5/8 inches.
 Each sheet is signed and dated in pencil lower right: Marvin Lipofsky 1985; titled and numbered along the bottom of the bottom sheet: St. Louis Print; 2/20.

Estimate:
\$400 / \$600



209
ED MUSANTE
 (American b. 1942)
 "Las Cabrillas"
 Painted cigar box.
 4 1/4 x 5 5/8 x 4 3/4 inches.
 Signed and dated 2001 on the inside of the lid. Customs export sticker along the side the box from Republic de Honduras.

Estimate:
\$500 / \$700



210
RAYMOND JACKSON
 (American late 20th century)
 "Industrial Edge"
 Oil on canvas.
 14 1/4 x 18 1/8 inches; Frame: 14 3/4 x 18 3/4 inches.
 Signed and dated lower right: Jackson 97; titled, signed and dated verso: "Industrial Edge" Raymond Jackson '97.

Estimate:
\$500 / \$700



211
JIM ROHAL
 (American b. 1974)
 "So. Cal Sprawl in Lavender Light"
 Oil on canvas.
 16 1/4 x 20 1/4 inches; Frame: 16 3/4 x 20 7/8 inches.
 Titled, signed and dated verso: So. Cal Sprawl in Lavender Light Jim Rohal 2005 (signed 2008, for Kim Frohsin).

Estimate:
\$500 / \$700



212
BROOK TEMPLE
 (American 20th century)
 "Ballerina"
 Ink wash on paper.
 18 1/2 x 21 3/4 inches.
 Signed and dated lower right: B. Temple 92'.

Estimate:
\$400 / \$600



213
AARON HAWKS
 (American 20th century)
 "Stalking #1"
 C-print.
 16 x 16 inches; Frame: 20 x 20 inches.
 Signed, dated and numbered on the sheet recto bottom right corner: A. Hawkes 2/10 2005.
 Invoice verso from The Shooting Gallery San Francisco with a postcard from the 2005 exhibition.

Estimate:
\$300 / \$500



214
LINDA CONNOR
 (American b. 1944)
 "Lotus, Kashmir India 1985", "Monk's Residence, Zanskar India 1985" and "White Sands, New Mexico 1982"
 Silver gelatin print.
 Sheet: 8 x 10 inches; Frame: 13 3/8 x 15 1/4 inches. Sheet: 8 x 9 7/8 inches; Frame: 11 1/4 x 12 5/8 inches. Sheet: 8 1/4 x 10 inches; Frame:
 Signed, titled and inventoried recto along the bottom of the sheet: Linda Connor, "Lotus, Kashmir India 1985" P.O.SP.POP. Signed, titled and inventoried recto along the bottom of the sheet: Linda Connor, "Monk's Residence, Zanskar India 1985" FOP/A20. Signed and titled recto along the bottom of the sheet: Linda Connor "White Sands, New Mexico 1982".
 CONDITION: "Lotus" in overall good condition, when examined out of the frame the sheet is not mounted on the mount but is hinged with archival tape. No visible abrasions or scratches to the sheet. No gelatin loss or discoloration. "Monk's Residence" in overall good condition; when examined out of the frame the sheet is not laid on mount but is hinged with archival tape. No visible abrasions or scratches to the gelatin. No visible tearing or creasing to the sheet. Impression with strong contrast. "White Sands" in overall good condition, when examined out of the frame the sheet is tacked at the corners with corner protectors. The paper is thin and does have some denting and surface dust from being improperly framed and handled. No visible scratches or abrasions to the gelatin. No visible evidence of tears or missing paper.

Estimate:
\$600 / \$800



215
JED DEVINE and JOEL LEIVICK
 (American b. 1944) and (American b. 1951)
 "Stacked Cups 1987" and "Underground Quarry Workmen 1988"
 Palladium print. Silver gelatin print.
 Image: 9 1/4 x 7 3/8 inches; Frame: 20 1/4 x 16 1/4 inches. Sheet: 13 7/8 x 11 inches; Frame: 18 3/4 x 15 3/4 inches.
 Signed under the image under the mat; Fraenkel Gallery San Francisco CA label verso. Signed, dated, inventoried and titled on the recto of the sheet: Joel Leivick, 1988 #88-22 Underground Quarry Workmen.

Estimate:
\$500 / \$700



216
JESSICA WYNNE
 (American 20th century)
 5 "Broadway Hotel"
 Color photograph.
 Each measures, Sight: 15 x 15 inches; Frame: 23 3/8 x 22 3/4 inches.
 Artist label on back of one of the frames.
 Due to the framing none were examined out of the frame.

Estimate:
\$600 / \$800



217
KIM FROHSIN
 (American b. 1961)
 "L' Arc de Triomphe" and "Thrust @Sunset"
 Mixed media on board.
 12 7/8 x 7 1/4 inches; Frame: 13 1/2 x 8 inches. 6 7/8 x 17 inches; Frame: 7 3/4 x 17 3/4 inches.
 Titled, dated and signed verso: "L' Arc de Triomphe" 11/2017 Kim Frohsin. Titled, dated and signed verso: "Thrust @ Sunset", 1/2018/ Kim Frohsin.

Estimate:
\$2,000 / \$3,000



218
JESSICA DUNNE
 (American late 20th century)
 "Parked Car" and "Conformists"
 Etching. Spitbite aquatint.
 Sheet: 11 x 10 inches; Frame: 14 1/8 x 13 inches. Sight: 6 x 6 inches; Frame: 19 1/4 x 18 3/4 inches.
 Signed and dated lower right: Jessica Dunn 1994; titled and numbered lower left: Parked Car 10/30. Signed and dated lower right: Jessica Dunne 1992; titled and numbered lower left: Conformists eiv 1/30.

Estimate:
\$300 / \$400



219
BRUCE HAFLEY
 (American 1920-2011)
 "The Knee bone is connected to the thigh bone"
 Silver point on ground of cad. yellow and black.
 Sheet: 7 1/2 x 8 inches; Frame: 9 1/8 x 10 1/4 inches.
 Signed and dated lower right under the foot of the figure: Bruce Hafley 1960; titled along the left edge of the sheet: "Title? The Knee bone is connected to the Thigh bone"

Estimate:
\$300 / \$500



220
KIM FROHSIN
 (American b. 1961)
 "To Be in Clover (Three of Wands)"
 Acrylic, ink, collage, high gloss on 8 ply archival board.
 14 1/4 x 11 1/4 inches; Frame: 14 3/4 x 11 7/8 inches.
 Titled, dated and signed verso: "To Be in Clover (Three of Wands)" 2013 Kim Frohsin. Three of wands tarot card with meaning verso.

Estimate:
\$2,000 / \$4,000



221
RANDALL SEXTON
 (American b. 1958)
 "Landscape"
 Oil on colored paper.
 Sheet: 6 3/8 x 8 1/4 inches; Frame: 11 5/8 x 13 1/4 inches.
 Signed lower right: R. Sexton.

Estimate:
\$600 / \$800



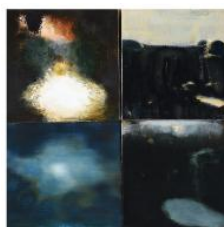
222
KELLY SUEDA
 (American 20th century)
 "Cityscape"
 Oil on canvas.
 Including think wood frame: 12 1/2 x 14 3/4 inches.
 Signed and dated lower right: Sueda '97.

Estimate:
\$400 / \$600



223
KIM FROHSIN
 (American b. 1961)
 "Distortion @ 745 Filbert"
 Photo, collage and ink glazes.
 15 7/16 x 7 1/16 inches; Frame: 16 1/8 x 7 3/4 inches.
 Titled, dated and signed verso: Distortion @ 745 Filbert 2005 Frohsin.
 Gallery one SF label verso.

Estimate:
\$2,000 / \$4,000



224
STEPHANIE PEEK
 (American 20th century)
 "Dark Blue Shadow Garden", "Moonlight", "Umber Garden" and "Opening"
 Oil on canvas laid on board. Oil on board. Oil on canvas laid on board.
 All four measure: 10 1/8 x 10 1/8 inches.
 All four are signed S. Peek, dated '96 and titled verso.

Estimate:
\$400 / \$600



225
CARL MORRIS
 (American 1911-1993)
 "Forms in Landscape"
 Oil on canvas.
 31 x 40 inches; Frame: 36 1/2 x 45 1/2 inches.
 Signed lower right: Carl Morris. Label verso upper left corner from The Art Institute of Chicago Fifty-eighth Annual American Exhibition Paintings and Sculpture, 1947. Label has full cataloging and artist information.
 CONDITION: In overall good condition; the canvas is dry and would benefit from being cleaned and varnished. Some craquelure throughout. *was not examined under black light

Estimate:
\$2,000 / \$4,000



226
SAM WEINER
 (American b. 1914)
 "Cubist Landscape"
 Watercolor and pencil on textured paper.
 Sight: 12 5/8 x 19 5/8 inches; Frame: 21 1/2 x 28 1/8 inches.
 Signed and dated upper right corner: S. Wiener 50.

Estimate:
\$400 / \$600



227
CORNELIS RUHTENBERG
 (American 1923-2008)
 "Untitled dual Portrait"
 Oil on canvas.
 23 x 18 5/8 inches; Frame: 28 1/8 x 23 5/8 inches.
 Signed and illegibly annotated verso:
 Cornelis Ruhtenberg.

Estimate:
\$700 / \$900



228
MILTON AVERY
 (American 1885-1965)
 "Sally with Beret, 1939"
 Drypoint.
 Plate: 7 7/8 x 6 3/8 inches; Sheet: 14 3/8 x 13 inches; Frame: 16 3/8 x 14 3/8 inches.
 Signed in the plate upper right corner: Milton Avery; signed and dated in pencil lower right: Milton Avery 1939 and numbered lower left: 2/100.
 CONDITION: In overall good condition, when examined out of the frame the sheet is not laid down but is hinged at the top. There is mild mat burn around the whole image; no visible abrasions to the image or areas of missing paper. This is a well inked impression with a strong plate mark.

Estimate:
\$2,000 / \$4,000



229
HERB GREENE
 (American b. 1942)
 "Jerry Garcia"
 Collotype.
 Image: 9 3/4 x 8 1/4 inches; Sheet: 19 x 14 5/8 inches.
 Signed in pencil lower right: Herb Greene and numbered lower left: 19/500.

Estimate:
\$500 / \$700



230
PETER ALEXANDER
 (American b. 1939)
 "Saugus"
 Digitally enhanced print on canvas.
 24 x 26 3/4 inches.
 Signed, titled, numbered and dated verso: "Saugus" Peter Alexander, 3/20; 99'.
 Venice Art Walk silent Auction invoice taped verso.

Estimate:
\$400 / \$600



231
HERB GREENE
 (American b. 1942)
 "Janis Joplin, 1966"
 Archival silver photograph on paper.
 Sheet: 23 7/8 x 19 3/4 inches;
 Frame: 27 1/4 x 27 1/4 inches.
 Signed in marker lower right (under the mat): H. Greene; dated lower left: 1967/1987 (photograph taken in 1967 and printed in 1987).
 Artist copyright stamp and number on sheet verso: "Photograph by Herb Greene copyright © 1967. Not to be reproduced without written permission. Ed. 3/50."
 Gallery label verso from The Camera Obscura Gallery Denver CO with full cataloging (Herb Greene "Janis Joplin, 1966" 3/50 / Archival silver).

Estimate:
\$500 / \$700



232
LEROY NEIMAN
 (American 1921-1912)
 "49ers vs. Miami: Post Season Classic"
 Silkscreen.
 Sight: 29 x 39 inches; Frame: 37 x 47 inches.
 Signed in pencil lower right: Leroy Neiman; numbered in pencil lower left: a/p 18/100.

Estimate:
\$600 / \$800



233
After NORMAN ROCKWELL
 (American 1894-1978)
 "Only Skin Deep"
 Offset lithograph poster.
 Sheet: 25 x 19 inches; Frame: 39 x 33 1/2 inches.
 Signed in marker pen lower right: Norman Rockwell; Stamped signature authentication verso lower left corner with signature of Guarantor (illegible).
 Certificate verso from N.D. Isen: Purveyors of Fine Art in Philadelphia, PA with full cataloging and signature authentication. Invoice from Landmark Savings and Securities Inc, San Jose CA verso top of the frame.
 CONDITION: In overall good condition, when examined out of the frame the sheet is not laid down but is taped across the top to the mat. No areas of missing paper or abrasions to the sheet. (Please contact the Fine Art department for additional images).

Estimate:
\$300 / \$500



234
NORBERT SCHLAUS
 (German / American 1927-2009)
 "Portrait of a Girl"
 Oil on canvas.
 34 x 25 3/4 inches; Frame: 39 1/2 x 31 1/4 inches.
 Signed upper left corner: N. Schlaus.

Estimate:
\$300 / \$500



239
ALEXANDER CALDER
 (American 1898-1976)
 "Spirals"
 Color lithograph circa 1970.
 Sheet: 17 1/2 x 12 3/8 inches;
 Framed: 27 3/4 x 22 1/2 inches.
 Signed in pencil lower right: Calder
 and numbered lower left EA.

Estimate:
\$700 / \$900



235
JAN DE RUTH
 (American / Czech 1922-1991)
 "Seated Nude"
 Oil on canvas.
 16 x 13 inches; Frame: 23 3/4 x 20 3/4 inches.
 Signed lower right: Jan de Ruth.

Estimate:
\$300 / \$500



240
JEAN NEGULESCO
 (American / Romanian 1897-1993)
 "Untitled Head"
 Marker and pastel.
 Including frame: 27 1/2 x 22 1/4 inches.
 Signed and dated lower right: Jean
 Negulesco 1932.

Estimate:
\$700 / \$900



236
KARL APPEL
 (American / German 1866-1937)
 "Untitled Abstract"
 Marker on paper.
 Sight: 8 x 11 1/4 inches; Frame: 16 1/8 x 20 1/8 inches.
 Signed lower right: Appel.

Estimate:
\$500 / \$700



241
JIM DINE
 (American b. 1935)
 "The Wolfman's Dream"
 Lithograph.
 Sheet: 58 x 43 inches; Frame: 63 3/8 x 47 3/4 inches.
 Signed, dated and numbered lower
 left: Jim Dine /1993 /8/30.

Estimate:
\$700 / \$900



237
JIM DINE
 (American b. 1935)
 "The Red Robe" (exhibition poster)
 Poster.
 Including thin metal frame: 40 1/2 x 24 1/8 inches.
 Signed in marker lower left under the
 image: Jim Dine; typed exhibition
 information along the bottom: "Jim
 Dine Walker Art Center 15 February
 to 15 April 1984".

Estimate:
\$400 / \$600



242
WADE REYNOLDS
 (American 1929-2011)
 "Portrait of a Woman"
 Oil with metallic highlights on board.
 40 1/8 x 30 1/8 inches.
 Signed and dated lower right: Wade
 Reynolds 1987.

Estimate:
\$400 / \$600



238
**Attributed to WILLIAM NORRIS
 DAKIN**
 (American 1910-1992)
 "Still Life"
 Oil on board.
 18 1/2 x 15 inches; Frame: 22 1/2 x 19 1/8 inches.
 Signed lower right: Dakin.

Estimate:
\$400 / \$600



243
JAN DE RUTH
 (American / Czech 1922-1991)
 "Standing Nude"
 Oil on canvas.
 24 x 14 inches; Frame: 31 3/4 x 21 1/2 inches.
 Signed lower right: Jan de Ruth.

Estimate:
\$400 / \$600



244
LEROY NEIMAN
 (American 1921-2012)
 "Vegas Craps"
 Silkscreen.
 Sight: 30 x 39 inches. Frame: 36 x 46 inches.
 Signed in pencil lower right: Leroy Neiman; numbered lower left: 67/300.

Estimate:
\$1,000 / \$1,500



249
NORBERT SCHLAUS
 (German / American 1927-2009)
 "Nude with Fisherman"
 Oil on canvas.
 44 x 32 inches.
 Signed verso: N Schlaus.

Estimate:
\$500 / \$700



245
LEROY NEIMAN
 (American 1921-2012)
 "Chicago Board of Trade"
 Silkscreen.
 Sight: 26 1/2 x 29 1/2 inches; Frame: 38 x 51 inches.
 Signed in pencil lower right: Leroy Neiman; numbered lower left: AP.

Estimate:
\$2,000 / \$4,000



256
Collection of Tiffany & Co. Enamel, Sterling Silver Gent's Jewelry Items.
 Including a money clip; an enamel key ring and chain; a pair of "x" motif cufflinks together with a pair of enamel circle cufflinks. Accompanied by two Tiffany & Co. pouches.
 {Gross Weight: 36.6 dwts}

Estimate:
\$300 / \$500



246
JAN DE RUTH
 (American / Czech 1922-1991)
 "Woman in Blue"
 Oil on canvas.
 25 x 18 1/8 inches; Frame: 33 1/4 x 26 1/8 inches.
 Signed lower right: Jan de Ruth.

Estimate:
\$400 / \$600



257
Chimento Diamond, 18k Gold Reversible Bracelet.
 The 18k reversible yellow and white gold brick link measuring approximately 9 mm in width, completed by a button snap clasp with a 0.03 ct. full-cut diamond, forming a 7 1/4 inch bracelet.
 {Gross Weight: 14.1 dwts}

Estimate:
\$700 / \$900



247
CHET RENESON
 (American b.1934)
 "Fishing at Sunset"
 Watercolor.
 Sight: 17 1/2 x 27 3/4 inches; frame: 27 x 37 1/4 inches.
 Signed and dated lower left: Reneson 04.
 CONDITION: In overall good condition. Not inspected out of frame. Please contact Fine Arts Department for full condition report.

Estimate:
\$2,500 / \$4,500



258
Ruby, Diamond, 14k Gold Ring.
 Centering one oval-cut ruby weighing 1.28 ct., accented by four baguette-cut and fifty-six full-cut diamonds weighing a total of approximately 0.90 cttw., set in a 14k yellow and white gold mounting. Accompanied by a GIA Gemological Report No. 6207790385, dated January 3, 2020 stating "Natural Corundum, Natural Ruby. No Indications of Heating."
 {Size: 7 1/2, Gross Weight: 3.2 dwts}

Estimate:
\$3,000 / \$5,000



248
NORBERT SCHLAUS
 (German / American 1927-2009)
 "Nude with Bathers"
 Oil on canvas.
 44 x 32 inches.
 Signed upper left corner: N Schlaus.

Estimate:
\$500 / \$700



Estimate:
\$300 / \$500

**259
Baroque Cultured Pearl, White Metal Necklace.**

Composed of twenty-nine baroque cultured pearls ranging in size from approximately 19 x 25.5 mm to 13.5 x 14.9 mm, completed by a white metal ball form clasp, forming a graduated 24 inch necklace. {Gross Weight: 93.4 dwts}



Estimate:
\$800 / \$1,200

**263
Emerald, Diamond, Platinum Wedding Ring Set.**

Including a rectangular cushion-cut emerald weighing approximately 1.10 ct., flanked by two tapered baguette-cut diamonds weighing a total of approximately 0.10 cttw., set in a platinum mounting, size 4 1/2 together with a matching contoured diamond, platinum band, size 4 1/2. {Gross Weight: 4.1 dwts}



Estimate:
\$3,000 / \$5,000

**260
Ruby, Diamond, 18k Gold Ring.**

Centering one pear-cut ruby weighing 1.33 ct., accented by tapered baguette-cut and full-cut diamonds weighing a total of approximately 0.90 cttw., set in an 18k yellow and white gold mounting. Accompanied by a GIA Gemological Report No. 2205790412 dated January 3, 2020 stating "Natural Corundum, Natural Ruby. No Indications of Heating." {Size: 7, Gross Weight: 2.5 dwts}



Estimate:
\$300 / \$500

**264
Baroque Cultured Pearl Necklace.**

Composed of eighty-two baroque cultured pearls measuring approximately 8.1 x 9.5 mm, forming a continuous 32 inch necklace. {Gross Weight: 38.8 dwts}



Estimate:
\$600 / \$800

**261
Diamond, Blackened Sterling Silver Pendant Necklace.**

Featuring nine rose-cut diamonds, accented by round-cut diamonds weighing a total of approximately 2.70 cttw., set in a blackened sterling silver lock shaped mounting measuring approximately 33 x 25 mm, suspended from a blackened sterling silver chain, forming a 20 inch pendant necklace. {Gross Weight: 8.4 dwts}



Estimate:
\$1,500 / \$2,000

**265
Emerald, Diamond, 14k Gold Ring.**

Centering one oval-cut emerald weighing approximately 2.65 cts., accented by twenty-two full-cut diamonds weighing a total of approximately 1.00 cttw., set in a 14k yellow and white gold mounting. {Size: 6 3/4, Gross Weight: 3.0 dwts}



Estimate:
\$400 / \$600

**262
Topaz, Diamond, Platinum Ring.**

Featuring one triangular-cut topaz weighing approximately 2.75 cts., accented by fourteen single-cut diamonds weighing a total of approximately 0.25 cttw., set in an art deco platinum mounting {Size: 5 1/2, Gross Weight: 4.8 dwts} Note: Shank bent.



Estimate:
\$800 / \$1,200

**266
Turquoise, Diamond, Blackened Sterling Silver Bracelet.**

Featuring thirteen oval shaped turquoise cabochons ranging in size from approximately 13.9 x 11.9 mm to 11.2 x 8.85 mm, accented by numerous round-cut diamonds weighing a total of approximately 2.00 cttw., set in a blackened sterling silver articulated mounting, completed by a tongue and groove clasp with 14k yellow gold tongue, forming an 8 inch bracelet. {Gross Weight: 16.7 dwts}



Estimate:
\$800 / \$1,200

267
Diamond, Platinum Wedding Ring Set.
Featuring one round brilliant-cut diamond weighing approximately 1.15 ct., flanked by four tapered baguette-cut diamonds weighing a total of approximately 0.20 cttw., set in a platinum mounting soldered to a matching platinum band featuring two full-cut and two baguette-cut diamonds weighing a total of approximately 0.15 cttw.
{Size: 7, Gross Weight: 6.2 dwts}



Estimate:
\$800 / \$1,200

271
Tanzanite, Diamond, 14k White Gold Ring.
Centering one oval-cut tanzanite weighing approximately 2.45 cts., surrounded by fourteen full-cut diamonds weighing a total of approximately 0.70 cttw., set in a 14k white gold mounting.
{Size: 7, Gross Weight: 3.1 dwts}



Estimate:
\$400 / \$600

268
Pair of Turquoise, Diamond, Blackened Sterling Silver Earrings.
Each featuring two oval shaped turquoise cabochons measuring approximately 13.5 x 9.5 mm and 15.5 x 11.7 mm, accented by round-cut diamonds weighing a total of approximately 0.55 cttw., set in a blackened sterling silver mounting measuring approximately 38 mm in length. Total diamond weight for the pair is approximately 1.10 cttw.
{Gross Weight: 7.1 dwts}



Estimate:
\$300 / \$500

272
Pair of Cultured Pearl, Diamond, 14k White Gold Earrings.
Each featuring one cultured pearl drop measuring approximately 7 mm, accented by ten single-cut diamonds weighing a total of approximately 0.05 cttw., set in a 14k white gold flame motif mounting measuring approximately 24 mm in length. Total diamond weight for the pair is approximately 0.10 cttw.
{Gross Weight: 2.4 dwts}



Estimate:
\$300 / \$500

269
Diamond, Blackened Sterling Silver Crescent Moon Pendant Necklace.
Featuring thirty-two full-cut diamonds weighing a total of approximately 1.40 cttw., set in a matte blackened sterling silver crescent moon pendant mounting measuring approximately 41 x 36 mm, suspended from a blackened sterling silver chain, forming a 24 inch necklace.
{Gross Weight: 9.6 dwts}



Estimate:
\$300 / \$500

273
Sapphire, Diamond, Platinum Ring.
Centering one round-cut sapphire weighing approximately 0.50 ct., surrounded by sixteen single-cut diamonds weighing a total of approximately 0.25 cttw., set in a platinum circle mounting.
{Size: 6, Gross Weight: 2.4 dwts}



Estimate:
\$400 / \$600

270
Aquamarine, Diamond, 14k White Gold Ring.
Centering one oval-cut aquamarine weighing approximately 7.90 cts., accented by twenty full-cut diamonds weighing a total of approximately 0.10 cttw., set in a 14k white gold mounting.
{Size: 7, Gross Weight: 3.9 dwts}



Estimate:
\$400 / \$600

274
Tanzanite, Diamond, Blackened Sterling Silver Pendant Necklace.
Centering one pear shaped tanzanite cabochon weighing approximately 14.05 cts., surrounded by baguette-cut and full-cut diamonds weighing a total of approximately 1.75 cttw., set in a blackened sterling silver mounting measuring approximately 36 x 22 mm, suspended from a blackened sterling silver chain, forming a 22 inch necklace.
{Gross Weight: 9.1 dwts}



Estimate:
\$400 / \$600

**275
Diamond, Blackened Sterling
Silver Bracelet.**

Featuring thirty-six diamond tablets, set in a blackened sterling silver hinged bangle bracelet mounting, completed by two figure eight safeties and with an internal diameter of approximately 60 mm. {Gross Weight: 7.8 dwts}



Estimate:
\$2,000 / \$3,000

**280
Diamond, 14k White Gold
Ring.**

Centering one old European-cut diamond weighing approximately 1.15 ct., accented by single-cut diamonds weighing a total of approximately 0.10 cttw., set in a 14k white gold mounting. {Size: 5, Gross Weight: 2.3 dwts}



Estimate:
\$300 / \$500

**276
Sapphire, Diamond, 14k White
Gold Bypass Ring.**

Featuring two oval-cut sapphires weighing a total of approximately 2.00 cttw., accented by eighteen full-cut diamonds weighing a total of approximately 0.12 cttw., set in a 14k white gold mounting. {Size: 7, Gross Weight: 1.7 dwts} Note: Sapphires show evidence of treatment.



Estimate:
\$400 / \$600

**281
Pair of Amethyst, 14k White
Gold Earrings.**

Each featuring an oval-cut amethyst weighing approximately 5.80 cts., set in a 14k white gold mounting measuring approximately 30 mm in length. Total amethyst weight for the pair is approximately 11.60 cttw. {Gross Weight: 3.5 dwts}



Estimate:
\$1,500 / \$2,500

**277
Diamond, 14k White Gold
Ring.**

Featuring one emerald-cut diamond weighing approximately 1.20 ct., set in a 14k white gold mounting. {Size: 5 3/4, Gross Weight: 1.7 dwts}



Estimate:
\$400 / \$600

**282
*Coral, Diamond, 14k White
Gold Ring.**

Featuring one round shaped coral cabochon measuring approximately 9.7 mm, flanked by six full-cut diamonds weighing a total of approximately 0.10 cttw., set in a 14k white gold mounting. {Size: 6 1/2, Gross Weight: 1.8 dwts}



Estimate:
\$400 / \$600

**278
Amethyst, 14k White Gold
Pendant.**

Featuring one pear-cut amethyst weighing approximately 14.75 cts., set in an articulated 14k white gold mounting measuring approximately 55 x 21 mm. {Gross Weight: 5.1 dwts}



Estimate:
\$300 / \$500

**283
Diamond, Blackened Sterling
Silver, 18k Yellow Gold
Necklace.**

Featuring twenty-three single-cut diamonds weighing a total of approximately 0.35 cttw., set in a blackened sterling silver horse shoe pendant mounting measuring approximately 16 x 15 mm, suspended from an 18k yellow gold chain, forming a 14 1/2 inch necklace. {Gross Weight: 2.0 dwts}



Estimate:
\$300 / \$500

**279
Cultured Pearl, 14k White Gold
Necklace.**

Composed of eighty-four round cultured pearls ranging in size from approximately 7.7 mm to 4.75 mm, completed by a 14k white gold clasp, forming a graduated 22 inch necklace. {Gross Weight: 14.0 dwts}



284
***Pair of Coral, 14k Yellow Gold Drop Earrings.**

Each featuring one coral drop measuring approximately 16 x 7 mm, bezel set in a 14k yellow gold mounting measuring approximately 36 mm in length.
 {Gross Weight: 2.7 dwts}

Estimate:
\$400 / \$600



288
Diamond, 14k Yellow Gold Ring.

Featuring seven full-cut and eight tapered baguette-cut diamonds weighing a total of approximately 0.50 cttw., set in a 14k yellow gold mounting.
 {Size: 3 3/4, Gross Weight: 3.4 dwts}

Estimate:
\$400 / \$600



285
Collection of Three Cultured Pearl, 14k Yellow Gold Jewelry Items.

Including a freshwater cultured pearl, 14k yellow gold 18 1/2 inch necklace; a pair of 14k yellow gold hoop earrings measuring approximately 33 mm together with a pair of 14k yellow gold open work Mughal style earrings measuring approximately 25 mm.
 {Gross Weight: 10.2 dwts}

Estimate:
\$300 / \$500



289
Jade, 14k Yellow Gold Charm Bracelet.

Featuring six carved jade charms, suspended from a 14k yellow gold figaro link chain, forming a 7 inch bracelet.
 {Gross Weight: 4.2 dwts}

Estimate:
\$300 / \$500



286
***Coral, Diamond, 14k Yellow Gold Ring.**

Featuring one saddle shaped coral cabochon measuring approximately 12 x 3.4 mm, surrounded by twenty full-cut diamonds weighing a total of approximately 0.50 cttw., set in a 14k yellow gold mounting.
 {Size: 6 1/2, Gross Weight: 2.3 dwts}

Estimate:
\$400 / \$600



290
Men's Jadeite Jade, 14k Yellow Gold Saddle Ring.

Featuring one jadeite jade saddle shape cabochon measuring approximately 15.7 x 6.2 mm, set in a 14k yellow gold mounting.
 {Size: 9 1/2, Gross Weight: 2.3 dwts}

Estimate:
\$300 / \$500



287
Tahitian Cultured Pearl, Diamond, Yellow Gold Pendant Necklace.

Featuring one round Tahitian cultured pearl measuring approximately 12.2 mm, surrounded by tapered baguette-cut diamonds weighing a total of approximately 1.15 cttw., set in an 18k yellow gold mounting measuring approximately 19 x 17 mm, suspended from a 14k yellow gold chain, forming a 16 inch pendant necklace.
 {Gross Weight: 5.9 dwts}

Estimate:
\$500 / \$700



291
Asian Jade, 14k Yellow Gold Ring.

Featuring an oval shaped jadeite jade cabochon measuring approximately 21.9 x 14.8 mm, set in a 14k yellow gold mounting.
 {Size (with insert): 5, Gross Weight: 6.0 dwts}

Estimate:
\$300 / \$500



292
Jade, 14k Yellow Gold Butterfly Brooch.

Designed as a butterfly, the wings featuring two carved and pierced jadeite jade plaques measuring approximately 30 x 19 mm, the eyes completed by two round-cut synthetic pink sapphires, set in a 14k yellow gold mounting measuring approximately 36 x 62 mm.
 {Gross Weight: 8.3 dwts}

Estimate:
\$300 / \$500



293
Men's Jade, 14k Yellow Gold Ring.
 Featuring one oval shaped jade cabochon measuring approximately 16.3 x 12.1 mm, set in a 14k yellow gold mounting.
 {Size: 9 1/2, Gross Weight: 3.3 dwts}

Estimate:
\$300 / \$500



297
Jade, Diamond, 14k Yellow Gold Jewelry Suite.
 Including one jadeite jade Bi disc, diamond, 14k yellow gold pendant measuring approximately 32 mm, suspended from a 14k yellow gold rope link chain, forming a 22 1/2 inch pendant necklace together with a pair of carved and pierced rectangular concave shape jadeite jade plaque, 14k yellow gold drop earrings measuring approximately 32 x 12 mm.
 {Gross Weight: 12.8 dwts}

Estimate:
\$500 / \$700



294
14k Yellow Gold Bead Necklace.
 Composed of fifty-three 14k yellow gold beads measuring approximately 6.5 mm, completed by a ball form clasp with safety chain, forming a 15 inch necklace.
 {Gross Weight: 12.4 dwts}

Estimate:
\$400 / \$600



298
Men's Jade, 14k Yellow Gold Ring.
 Featuring a square shaped jade cabochon measuring approximately 13.3 x 14.5 mm, set in a 14k yellow gold mounting.
 {Size: 9 3/4, Gross Weight: 5.0 dwts}

Estimate:
\$300 / \$500



295
Jadeite Jade, Diamond, 18k Yellow Gold Brooch.
 Featuring three pear shaped jadeite jade cabochons ranging in size from approximately 8.7 x 6.6 mm to 8.3 x 6.3 mm, accented by three full-cut diamonds weighing a total of approximately 0.10 cttw., set in an 18k yellow gold fluted mounting measuring approximately 54 x 40 mm.
 {Gross Weight: 7.7 dwts}

Estimate:
\$600 / \$800



299
Men's Diamond, 14k Yellow Gold Ring.
 Featuring seven full-cut diamonds weighing a total of approximately 0.35 cttw., set in a 14k yellow gold mounting.
 {Size: 11, Gross Weight: 6.2 dwts}

Estimate:
\$400 / \$600



296
Jadeite Jade, Silver-Gilt Ring.
 Featuring one oval shaped jadeite jade cabochon measuring approximately 9.6 x 7.8 mm, set in a silver-gilt mounting.
 {Size: 6 1/4, Gross Weight: 1.2 dwts}

Estimate:
\$300 / \$500



300
Men's Jade, 14k Yellow Gold Ring.
 Featuring one oval shaped jade cabochon measuring approximately 19.9 x 15 mm, set in a 14k yellow gold mounting.
 {Size: 10, Gross Weight: 4.9 dwts}

Estimate:
\$300 / \$500



301
Jadeite Jade, 14k Yellow Gold Pendant.
 Featuring one carved and pierced jadeite jade plaque measuring approximately 26 x 17 mm, completed by a 14k yellow gold bail. {Gross Weight: 1.4 dwts}

Estimate:
\$300 / \$500



306
Collection of Three Yellow Gold Rings.
 Including one 18k yellow gold checkered motif ring, size 5 3/4; one 7 mm 14k yellow gold band, size 6 1/2 together with a 3 mm 14k yellow gold band, size 6 3/4. {Gross Weight: 8.5 dwts}

Estimate:
\$300 / \$500



302
Asian 22k Yellow Gold Ring.
 The 22k yellow gold oval shaped ring with various symbols and an adjustable shank. {Size: 6 1/2, Gross Weight: 4.0 dwts}

Estimate:
\$300 / \$500



307
Multi-Stone Bead, 14k Yellow Gold Jewelry Suite.
 Including one rose quartz bead, blue and cream tone bead, black onyx bead, 14k yellow gold three strand 18 inch necklace together with a rose quartz bead, amethyst bead, aventurine quartz bead, 14k yellow gold two strand 7 1/2 inch bracelet. {Gross Weight: 137.5 dwts} Provenance: From the Sylvia Blumenfeld Trust, San Francisco CA.

Estimate:
\$300 / \$500



303
Jadeite Jade Bangle Bracelet.
 The jadeite jade bangle bracelet measuring approximately 9 mm in width with an internal diameter of approximately 57 mm. {Gross Weight: 30.4 dwts}

Estimate:
\$300 / \$500



308
Collection of Seven Gent's Elk's Lodge Jewelry Items.
 Including a pair of cufflinks; four tooth charms and two matching sterling silver Elk pins. {Gross Weight: 29.8 dwts}

Estimate:
\$300 / \$500



304
Nephrite Jade, Cultured Pearl, 14k Yellow Gold Ring.
 Featuring two nephrite jade balls measuring approximately 10.6 mm, accented by cultured pearls, set in a 14k yellow gold leaf motif mounting. {Size: 5, Gross Weight: 7.3 dwts}

Estimate:
\$400 / \$600



309
Collection of Two Rose Quartz, 14k Yellow Gold Necklaces.
 Including one round shaped rose quartz cabochon measuring approximately 39 mm, rose quartz bead, 14k yellow gold four strand 22 1/2 inch necklace together with one rose quartz bead, 14k yellow gold 27 inch necklace. {Gross Weight: 266.1 dwts} Provenance: From the Sylvia Blumenfeld Trust, San Francisco CA. Note: Multi-strand necklace needs to be restrung, two strands detached.

Estimate:
\$300 / \$500



305
Jade, 14k Yellow Gold Pendant Necklace.
 Featuring a circle jade disc measuring approximately 53 mm, completed by a 14k yellow gold bail with Chinese character, suspended from a 14k yellow gold rope link chain, forming a 24 inch necklace. {Gross Weight: 20.1 dwts}

Estimate:
\$300 / \$500



310
Asian Pink Tourmaline, 18k Yellow Gold Ring.
 Featuring one oval shaped pink tourmaline cabochon measuring approximately 14.9 x 10.4 mm, set in an 18k yellow gold mounting.
 {Size: 6, Gross Weight: 2.8 dwts}

Estimate:
\$400 / \$600



315
Collection of Two Citrine, 14k Yellow Gold Rings.
 Including one heart-cut citrine, 14k yellow gold calla lily motif ring, size 9 1/2 together with an oval-cut citrine, 14k yellow gold ring, size 6.
 {Gross Weight: 17.0 dwts}

Estimate:
\$400 / \$600



311
Pink Tourmaline, 18k Yellow Gold Necklace.
 Featuring nine pink tourmaline beads ranging in size from approximately 8 x 4.8 mm to 11.2 x 6 mm, suspended from an 18k yellow gold chain, forming a continuous 31 inch necklace.
 {Gross Weight: 4.1 dwts}

Estimate:
\$400 / \$600



316
Pair of Citrine, Diamond, 18k Yellow Gold Earrings.
 Each featuring one oval shaped faceted-top citrine, accented by two full-cut diamonds weighing a total of approximately 0.05 cttw., set in an 18k yellow gold mounting measuring approximately 20 x 6 mm. Total diamond weight for the pair is approximately 0.10 cttw.
 {Gross Weight: 5.9 dwts}

Estimate:
\$400 / \$600



312
Star Ruby, Cat's Eye Diopside, 14k Rose Gold Ring.
 Featuring one round shaped star ruby cabochon measuring approximately 8.5 mm, accented by one round shaped cat's eye diopside cabochon measuring approximately 9.4 mm, set in a 14k rose gold mounting.
 {Size: 7, Gross Weight: 3.7 dwts}

Estimate:
\$300 / \$500



317
Cat's Eye Moonstone, 14k Rose Gold Ring.
 Featuring one oval shaped cat's eye moonstone cabochon measuring approximately 20.3 x 14.9 mm, set in a 14k rose gold mounting.
 {Size: 7, Gross Weight: 4.7 dwts}

Estimate:
\$300 / \$500



313
Collection of Three Garnet, Yellow Gold Rings.
 Including a marquise-cut garnet, 14k yellow gold ring, size 8 1/4; an emerald-cut garnet, 14k yellow gold ring, size 8 1/2 together with a garnet, 10k yellow gold ring, size 8 1/2.
 {Gross Weight: 8.4 dwts}

Estimate:
\$300 / \$500



318
Pair of Cultured Pearl, Diamond, 14k Rose Gold Drop Earrings.
 Each featuring one round cultured pearl measuring approximately 9 mm, accented by one round brilliant-cut diamond weighing approximately 0.03 ct., set in a 14k rose gold drop mounting measuring approximately 43 mm. Total diamond weight for the pair is approximately 0.06 cttw.
 {Gross Weight: 3.3 dwts}

Estimate:
\$300 / \$500



314
14k Yellow Gold Necklace.
 The 14k yellow gold graduated Omega link tapering from 12 mm to 6 mm, completed by a tongue and groove clasp with figure eight safety, forming a 15 1/2 inch necklace.
 {Gross Weight: 32.0 dwts}

Estimate:
\$800 / \$1,200



Estimate:
\$1,200 / \$1,400

319
Opal, Diamond, 18k Yellow Gold Pendant Necklace.
Centering one oval shaped opal cabochon measuring approximately 25 x 20 mm, surrounded by thirty-four full-cut diamonds weighing a total of approximately 0.75 cttw., set in an 18k yellow gold mounting, suspended from an 18 inch pendant necklace.
{Gross Weight: 6.2 dwts}



Estimate:
\$400 / \$600

323
Pair of Diamond, 14k Yellow Gold Hoop Earrings.
Each featuring eleven full-cut diamonds weighing a total of approximately 0.55 cttw., set in a 14k yellow gold hoop mounting measuring approximately 27 x 3 mm. Total diamond weight for the pair is approximately 1.10 cttw.
{Gross Weight: 3.2 dwts}



Estimate:
\$400 / \$600

320
Citrine, Green Quartz, Diamond, 14k Rose Gold Ring.
Featuring one oval-cut citrine weighing approximately 1.65 ct., accented by one oval-cut green quartz weighing approximately 2.20 cts., further enhanced by sixteen full-cut diamonds weighing a total of approximately 0.08 cttw., set in a 14k rose gold bypass mounting.
{Size: 7, Gross Weight: 2.4 dwts}



Estimate:
\$600 / \$800

324
Diamond, 18k Rose Gold Eternity Band.
Featuring twenty full-cut diamonds weighing a total of approximately 1.00 cttw., set in an 18k rose gold eternity band mounting.
{Size: 7, Gross Weight: 1.7 dwts}



Estimate:
\$300 / \$500

321
Opal, 8k Yellow Gold Bracelet.
Composed of twenty-nine round shaped opal cabochons measuring approximately 5 mm to 4.7 mm, set in an 8k yellow gold mounting, completed by a tongue and groove clasp, forming a 7 1/4 inch bracelet.
{Gross Weight: 4.1 dwts}



Estimate:
\$400 / \$600

325
Lemon Quartz, Diamond, 14k Yellow Gold Ring.
Featuring one fancy round-cut lemon quartz weighing approximately 9.50 cts., accented by twenty full-cut diamonds weighing a total of approximately 0.05 cttw., set in a 14k yellow gold mounting.
{Size: 7 1/4, Gross Weight: 3.7 dwts}



Estimate:
\$300 / \$500

322
Pair of Peridot, 14k Yellow Gold Stud Earrings.
Each featuring an emerald-cut peridot weighing approximately 1.45 ct., set in a 14k yellow gold stud mounting measuring approximately 9 x 7 mm. Total peridot weight for the pair is approximately 2.90 cttw.
{Gross Weight: 1.2 dwts}



Estimate:
\$300 / \$500

326
Collection of Three Pairs of 14k Yellow Gold Earrings.
Including a pair of 14k yellow gold bamboo motif hoop earrings measuring approximately 35 mm; a pair of 14k yellow gold polished hoop earrings measuring approximately 25 mm together with a pair of 14k yellow gold zigzag earrings measuring approximately 26 x 23 mm.
{Gross Weight: 7.5 dwts}



Estimate:
\$900 / \$1,200

**327
Mint Tourmaline, Diamond, 18k
Gold Ring.**

Centering one emerald-cut mint tourmaline weighing approximately 3.25 cts., surrounded by twenty full-cut diamonds weighing a total of approximately 0.55 cttw., set in an 18k yellow and white gold mounting. {Size: 6 3/4, Gross Weight: 2.5 dwts}



Estimate:
\$800 / \$1,200

**328
Emerald, 18k Yellow Gold
Pendant Necklace.**

Featuring one oval shaped emerald cabochon measuring approximately 16.9 x 14 mm, accented by two emerald-cut emeralds weighing a total of approximately 2.80 cttw., bezel set in an 18k yellow gold mounting, suspended from an 18k yellow gold chain, forming a 17 1/2 inch necklace. {Gross Weight: 3.5 dwts}



Estimate:
\$400 / \$600

**331
Malachite, 14k Rose Gold
Necklace.**

Featuring three oval shaped malachite cabochons measuring approximately 30 x 19.8 mm, 15.5 x 10.35 mm, and 17.2 x 10.9 mm, set in a 14k rose gold mounting, suspended from a 14k rose gold chain, forming an adjustable 15 1/4 to 17 1/4 inch necklace. {Gross Weight: 11.4 dwts}



Estimate:
\$500 / \$700

**332
Diamond, Enamel, 18k Yellow
Gold Ring.**

Featuring eleven single-cut diamonds weighing a total of approximately 0.20 cttw., accented by blue and green enamel, set in a branch motif bombe style 18k yellow gold ring mounting. {Size: 7, Gross Weight: 8.6 dwts} Note: Loss to enamel.



Estimate:
\$1,000 / \$1,500

**329
Emerald, Diamond, 18k Gold
Ring.**

Centering one emerald-cut emerald weighing approximately 2.15 cts., surrounded by full-cut diamonds weighing a total of approximately 0.85 cttw., set in an 18k yellow and white gold mounting. {Size: 6 3/4, Gross Weight: 2.8 dwts}



Estimate:
\$700 / \$900

**333
14k Yellow Gold Bracelet.**

The 14k yellow gold concave and textured hinged bangle bracelet measuring approximately 11 mm in width, completed by a pressure clasp with safety chain and an internal diameter of approximately 62 mm. {Gross Weight: 17.7 dwts}



Estimate:
\$300 / \$500

**330
Collection of Two 14k Yellow
Gold Circle Brooches.**

Including one 14k yellow gold circle brooch measuring approximately 32 mm together with a 14k yellow gold six row, twisted motif circle brooch measuring approximately 32 mm and completed by a metal pin stem. {Gross Weight: 11.1 dwts}



Estimate:
\$300 / \$500

**334
Collection of Two Sapphire,
Diamond, 14k Yellow Gold
Rings.**

Including a sapphire, diamond, 14k yellow gold ring, size 8 1/2 together with a sapphire, 14k yellow gold cluster ring, size 7. {Gross Weight: 7.4 dwts}



Estimate:
\$300 / \$500

**335
14k Yellow Gold Elks Lodge
Membership Holder.**

The 14k yellow gold pin stripe motif membership holder featuring an enamel Elks Lodge emblem and initials "WH", opening to reveal letters B P O E. {Gross Weight: 9.6 dwts} Note: Inside marked with serial no. 1697396.



Estimate:
\$300 / \$500

**336
Diamond, Sapphire, 18k Yellow Gold Ring.**

Featuring seven full-cut diamonds weighing a total of approximately 0.50 cttw., accented by eight marquise-cut sapphires weighing a total of approximately 0.35 cttw., set in an 18k yellow gold mounting. {Size: 8 1/4, Gross Weight: 3.0 dwts}



Estimate:
\$3,000 / \$5,000

**337
Austrian 18k Yellow Gold Necklace.**

The 18k yellow gold fancy link measuring approximately 10 mm in width, completed by a tongue and groove clasp with two side safeties, forming a 19 3/4 necklace. {Gross Weight: 81.8 dwts} Provenance: From a private San Francisco estate. Note: Clasp marked with Austrian cocker spaniel hallmark featuring a W for Vienna.



Estimate:
\$300 / \$500

**338
Lapis Lazuli, 18k Yellow Gold Ring.**

Centering one oval shaped lapis lazuli cabochon measuring approximately 13.5 x 10 mm, set in an 18k yellow gold woven motif mounting. {Size: 7 3/4, Gross Weight: 4.8 dwts}



Estimate:
\$500 / \$700

**339
Victorian Grand Period Pearl, Enamel, Diamond, 14k Yellow Gold Brooch.**

Centering one half pearl measuring approximately 6 x 5.4 mm, surrounded by eight rose-cut diamonds, accented by royal blue enamel with a star motif, further enhanced by twenty half pearls and royal blue enamel, set in a 14k yellow gold wrapped ribbon motif mounting measuring approximately 35 x 56 mm. {Gross Weight: 17.2 dwts} Note: Minor loss to enamel.



Estimate:
\$600 / \$800

**340
Mikimoto Cultured Pearl, 18k Yellow Gold Necklace.**

Composed of fifty-nine round cultured pearls measuring approximately 6.2 mm, completed by a cultured pearl, 18k yellow gold clasp, forming a 16 inch necklace. {Gross Weight: 14.7 dwts}



Estimate:
\$300 / \$500

**341
Collection of Two Lapis Lazuli, 14k Yellow Gold Rings.**

Including one rectangular shaped lapis lazuli cabochon measuring approximately 12 x 10 mm, diamond, 14k yellow gold ring, size 8 together with an oval shaped lapis lazuli cabochon measuring approximately 20.3 x 15.5 mm, 14k yellow gold ring, size 8 1/2. {Gross Weight: 8.1 dwts}



Estimate:
\$400 / \$600

**342
Collection of Two Lapis Lazuli, Turquoise, 14k Yellow Gold Rings.**

Including one Native American oval shaped turquoise cabochon measuring approximately 16.9 x 10 mm, 14k yellow gold ring signed "LL" size 10 1/2 together with a carved lapis lazuli flower tablet, 14k yellow gold ring, size 11 3/4. {Gross Weight: 13.0 dwts}



Estimate:
\$400 / \$600

**343
Attributed to Tiffany & Co. Pair of Diamond, Sapphire, 18k Gold Ear Clips.**

Designed as a pair of leaves, each featuring seven single-cut diamonds weighing total of approximately 0.15 cttw., accented by twenty-three round-cut sapphires weighing a total of approximately 0.50 cttw., set in an 18k yellow and white gold non-pierced ear clip mounting measuring approximately 30 x 20 mm. Total diamond weight for the pair is approximately 0.30 cttw. Total sapphire weight for the pair is approximately 1.00 cttw. Accompanied by a Tiffany & Co. box. {Gross Weight: 10.1 dwts} Note: Etched serial no. 01334.



**344
Diamond, 14k Gold Cluster Ring.**
Featuring twenty-eight full-cut diamonds weighing a total of approximately 0.90 cttw., set in a 14k yellow and white gold cluster mounting.
{Size: 7 1/2, Gross Weight: 3.9 dwts}

**Estimate:
\$400 / \$600**



**349
Collection of Three Multi-Stone, Diamond, Yellow Gold Rings.**
Including one aquamarine, sapphire, 14k yellow gold ring, size 8 1/4; one assembled blue stone, diamond, 14k yellow gold ring, size 7 together with an aquamarine, colorless stone, 10k yellow gold ring, size 7 1/2.
{Gross Weight: 9.4 dwts}

**Estimate:
\$300 / \$500**



**345
Sapphire, Diamond, 14k Yellow Gold Ring.**
Featuring four full-cut diamonds weighing a total of approximately 0.10 cttw., surrounded by twelve marquise-cut sapphires weighing a total of approximately 0.50 cttw., set in a 14k yellow gold mounting.
{Size: 7, Gross Weight: 2.5 dwts}

**Estimate:
\$300 / \$500**



**350
Cultured Pearl, 14k Yellow Gold Jewelry Suite.**
Including a round cultured pearl ranging in size from approximately 7.9 mm to 3.05 mm, 14k yellow gold graduated 22 inch necklace; a cultured pearl, 14k yellow gold brooch measuring approximately 35 x 31 mm; a cultured pearl, 14k yellow gold leaf motif brooch measuring approximately 51 x 32 mm together with a cultured pearl, 14k yellow gold ring, size 6 1/4.
{Gross Weight: 21.1 dwts}

**Estimate:
\$500 / \$700**



**346
Pair of Moonstone, Diamond, Vermeil Stud Earrings.**
Each featuring one pear shaped moonstone cabochon measuring approximately 11.2 x 9.1 mm, surrounded by round-cut diamonds weighing a total of approximately 0.20 cttw., set in a vermeil mounting. Total diamond weight for the pair is approximately 0.40 cttw.
{Gross Weight: 3.7 dwts}

**Estimate:
\$300 / \$500**



**351
Sapphire, Diamond, 14k Yellow Gold Ring.**
Centering one oval-cut sapphire weighing approximately 1.20 ct., accented by twelve full-cut diamonds weighing a total of approximately 0.35 cttw., set in a 14k yellow gold mounting.
{Size: 6 1/2, Gross Weight: 2.4 dwts}

**Estimate:
\$600 / \$800**



**347
Diamond, Sapphire, 18k Yellow Gold Ring.**
Featuring eight single-cut diamonds weighing a total of approximately 0.25 cttw., accented by thirty-five round-cut sapphires weighing a total of approximately 0.75 cttw., set in an 18k yellow gold open work mounting.
{Size: 6 1/2, Gross Weight: 7.6 dwts}
Note: One sapphire missing.

**Estimate:
\$400 / \$600**



**352
Pair of Diamond, 14k Yellow Gold Stud Earrings.**
Each featuring one old European-cut diamond weighing approximately 0.45 ct. and 0.42 ct., set in a 14k yellow gold stud mounting.
{Gross Weight: 1.3 dwts}
Note: Evidence of lead solder.

**Estimate:
\$400 / \$600**



**348
Asian 22k Yellow Gold Pendant.**
The 22k yellow gold double pomegranate with leaves pendant measuring approximately 25 x 20 mm.
{Gross Weight: 7.5 dwts}

**Estimate:
\$300 / \$500**



353
Collection of Two Diamond, Blue Topaz, Yellow Gold Rings.
 Including one diamond, 14k yellow gold ring, size 7 1/2 together with a blue topaz, diamond, 10k yellow gold ring, size 6 1/2.
 {Gross Weight: 4.2 dwts}

Estimate:
\$300 / \$500



357
Collection of Four Multi-Stone, Diamond, 14k Yellow Gold Rings.
 Including an opal, diamond, 14k yellow gold ring, size 8; an emerald, 14k yellow gold ring, size 8; an amethyst, 14k yellow gold ring, size 7 1/2 together with a synthetic color change sapphire, 14k yellow gold ring, size 8.
 {Gross Weight: 6.1 dwts}

Estimate:
\$300 / \$500



354
14k Yellow Gold Necklace.
 The 14k yellow gold woven motif link measuring approximately 13 mm, completed by a tongue and groove clasp, forming a 16 inch necklace.
 {Gross Weight: 51.8 dwts}

Estimate:
\$1,500 / \$2,500



358
Diamond, 10k Yellow Gold Heart Pendant.
 Featuring seventeen full-cut diamonds weighing a total of approximately 0.90 cttw., set in a 10k yellow gold open heart motif mounting measuring approximately 25 x 19 mm.
 {Gross Weight: 1.5 dwts}

Estimate:
\$300 / \$500



355
Blue Topaz, Diamond, 14k Yellow Gold Jewelry Suite.
 Including an oval-cut blue topaz, diamond, 14k yellow gold pendant measuring approximately 28 x 13 mm together with a pair of emerald-cut blue topaz, 14k yellow gold stud earrings.
 {Gross Weight: 4.2 dwts}

Estimate:
\$400 / \$600



359
***Collection of Three Multi-Stone, 14k Yellow Gold Rings.**
 Including a coral cabochon, seed pearl, 14k yellow gold ring, size 7 1/2; an oval-cut amethyst, 14k yellow gold ring, size 7 1/4 together with a horn cabochon, 14k yellow gold ring, size 8.
 {Gross Weight: 9.8 dwts}

Estimate:
\$300 / \$500



356
Amethyst, Yellow Sapphire, Diamond, 18k Yellow Gold Bracelet.
 Featuring eight oval shaped amethyst cabochons measuring approximately 5.5 x 4 mm, accented by fifteen square-cut yellow sapphires weighing a total of approximately 3.00 cttw., further enhanced by thirty-two full-cut diamonds weighing a total of approximately 0.65 cttw., set in an 18k yellow gold mounting, completed by a tongue and groove clasp with a safety chain, forming a 7 inch bracelet.
 {Gross Weight: 23.0 dwts}

Estimate:
\$800 / \$1,200



360
14k Yellow Gold Necklace.
 The 14k yellow gold lattice motif link measuring approximately 7.5 mm, completed by a tongue and groove clasp with figure eight safety, forming a 16 inch necklace.
 {Gross Weight: 19.8 dwts}

Estimate:
\$600 / \$800



361
Collection of Two Men's Amethyst, Emerald, 14k Yellow Gold Rings.
 Including one round-cut emerald, 14k yellow gold nugget motif ring, size 12 1/4 together with an oval-cut amethyst, 14k yellow gold bird motif ring, size 10
 {Gross Weight: 13.6 dwts}

Estimate:
\$400 / \$600



Estimate:
\$400 / \$600

362
Diamond, 14k Gold Pendant Necklace.
Featuring round-cut diamonds weighing a total of approximately 0.35 cttw., set in a 14k yellow and white gold snake shaped mounting measuring approximately 47 x 4 mm, suspended from a 14k yellow gold chain, forming an 18 inch necklace. {Gross Weight: 3.0 dwts}



Estimate:
\$700 / \$900

366
Multi-Stone, 14k Yellow Gold Slide Bracelet.
Composed of twelve varying shaped slides featuring, amethyst, garnet, sapphire, diamond, opal, peridot, seed pearls, synthetic stones and enamel, interspersed by 14k yellow gold beads, completed by a tongue and groove clasp with safety chain, forming a 7 1/4 inch bracelet. {Gross Weight: 19.8 dwts}



Estimate:
\$500 / \$700

363
Collection of Three Men's Multi-Stone, Yellow Gold Rings.
Including one round-cut colorless stone, 14k yellow and white gold ring, size 9 3/4; one emerald-cut emerald, 10k yellow gold ring, size 9 3/4 together with a rectangular-cut synthetic color change sapphire, 10k yellow gold ring, size 7 1/2. {Gross Weight: 17.6 dwts}



Estimate:
\$300 / \$500

367
Collection of Three Multi-Stone, Yellow Gold, Gold-Plate Rings.
Including one round jade cabochon, 14k yellow gold ring, size 8 1/4; one garnet, 10k yellow gold ring, size 8 1/4 together with an enamel, 18k yellow gold plated ring, size 8 3/4. {Gross Weight: 13.4 dwts}



Estimate:
\$600 / \$800

364
14k Yellow Gold Necklace.
The 14k yellow gold mesh and central knotted link, completed by a spring ring clasp, forming a five strand 16 1/2 inch necklace. {Gross Weight: 19.8 dwts}



Estimate:
\$700 / \$900

368
Diamond, 14k Yellow Gold "Shaker" Pendant Necklace.
Featuring numerous round-cut diamonds weighing a total of approximately 1.50 cttw., enclosed inside a "shaker" pendant, completed by a 14k yellow gold bail, suspended from a 14k yellow gold chain, forming an 18 inch pendant necklace. {Gross Weight: 4.4 dwts}



Estimate:
\$300 / \$500

365
Diamond, Multi-Stone, 14k Yellow Gold Jewelry Suite.
Including a blue and white diamond, 14k yellow gold open work ring, size 8 1/4 together with a pair of multi-stone, diamond, 14k yellow gold earrings measuring approximately 21 x 16 mm. {Gross Weight: 8.9 dwts}



Estimate:
\$300 / \$500

369
Collection of Two Multi-Stone, 10k Yellow Gold Rings.
Including one emerald, sapphire, ruby, 10k yellow gold ring, size 8 3/4 together with a ruby, colorless stone, 10k yellow gold ring, size 8. {Gross Weight: 3.7 dwts}



370
Black Onyx Inlay, 14k Yellow Gold Jewelry Suite.
 Including one black onyx inlay, 14k yellow gold ring, size 6 1/4 together with a 14k yellow gold braided link 7 inch bracelet.
 {Gross Weight: 3.5 dwts}

Estimate:
\$300 / \$500



374
Collection of Two Victorian Mourning Period Seed Pearl, Black Onyx, 10k Rose Gold Jewelry Items.
 Including one black enamel, black onyx, 10k rose gold cross pendant measuring approximately 106 x 51 mm together with a seed pearl, black onyx, 10k rose gold bar brooch measuring approximately 11.5 x 59.5 mm.
 {Gross Weight: 23.1 dwts}

Estimate:
\$300 / \$500



371
Diamond, 18k Yellow Gold Ring.
 Featuring two full-cut diamonds weighing a total of approximately 0.37 cttw., set in an 18k yellow gold open mounting.
 {Size: 8 1/4, Gross Weight: 1.1 dwts}

Estimate:
\$400 / \$600



375
Moonstone, Diamond, 14k Rose Gold Ring.
 Featuring one oval shaped moonstone cabochon measuring approximately 14.85 x 11.3 mm, accented by twelve full-cut diamonds weighing a total of approximately 0.08 cttw., set in a 14k rose gold mounting.
 {Size: 7, Gross Weight: 2.8 dwts}

Estimate:
\$400 / \$600



372
Cat's Eye Diopside, Cat's Eye Moonstone, 14k Rose Gold Bracelet.
 Featuring one round shaped cat's eye moonstone cabochon measuring approximately 11 mm, accented by two oval shaped cat's eye diopside cabochons measuring approximately 9.25 x 8.1 mm and 9.5 x 6.8 mm, set in a 14k rose gold open cuff mounting with an internal diameter of approximately 58 mm.
 {Gross Weight: 4.5 dwts}

Estimate:
\$400 / \$600



376
14k Rose Gold Necklace.
 The 14k rose gold textured oval shaped beads measuring approximately 4 mm in width, completed by a lobster claw clasp, forming a 22 inch necklace.
 {Gross Weight: 11.0 dwts}

Estimate:
\$300 / \$500



373
Men's Diamond, 14k Yellow Gold Ring.
 Featuring one round brilliant-cut diamond weighing approximately 0.45 ct., set in a 14k yellow gold mounting.
 {Size: 10 3/4, Gross Weight: 7.3 dwts}

Estimate:
\$300 / \$500



377
Diamond, 18k Rose Gold Ring.
 Featuring full-cut diamonds weighing a total of approximately 0.50 cttw., set in an open work 18k rose gold mounting.
 {Size: 6 1/2, Gross Weight: 3.2 dwts}

Estimate:
\$300 / \$500



378
14k Yellow Gold Bracelet.
 The 14k yellow gold hinged bangle bracelet in the style of a wristwatch, measuring approximately 18 to 8 mm, completed by a tongue and groove clasp with safety chain.
 {Gross Weight: 12.3 dwts}
 Note: Safety chain broken.

Estimate:
\$400 / \$600



379
Boucheron Diamond, 18k Yellow Gold, Leather Wristwatch.
 DIAL: Rectangle, gold, gold baton hands, Boucheron, Swiss.
 MOVEMENT: Quartz (not opened).
 CASE: Rectangle, 18k yellow gold, fluted, thirty-six full-cut diamonds weighing a total of approximately 0.50 cttw., four screw back, Boucheron, AJ 415371, Swiss made, 32 x 21 mm. STRAP: Black leather, Boucheron buckle, slide clasp, 7 1/4 inches.
 {Gross Weight: 23.7 dwts}
 Note: Leather worn, needs new strap.

Estimate:
\$1,000 / \$1,500



380
Retro Ruby, Diamond, 14k Yellow Gold Wristwatch.
 DIAL: Square, silvered, gold Arabic numeral, dot and arrow hour markers, gold baton hands, Perle.
 MOVEMENT: Manual wind, seventeen (17) jewels, unadjusted, National Jewelers Co., Swiss.
 CASE: Rectangle, 14k yellow gold, two lugs featuring eight square-cut rubies, snapback, engraved "Abe to Ruth, With Love 11-25-47", 27 x 14 mm. BRACELET: 14k yellow gold, fancy retro links, six single-cut diamonds weighing a total of approximately 0.10 cttw., fold over clasp with safety chain, 6 1/2 inches.
 {Gross Weight: 17.4 dwts}

Estimate:
\$500 / \$700



381
American Waltham 14k Yellow Gold Pocket Watch.
 DIAL: Round, white, black Arabic numeral hour markers, black outer minutes track, red outer five minute interval track, sunken subsidiary seconds dial at 6 o'clock, blued spade hands, American Waltham.
 MOVEMENT: Manual wind, jeweled, 6365938, safety barrel, American Waltham Watch Co. CASE: 14k yellow gold, hunting case, 560871, engraved floral, bird, and engine turn pattern motifs, engraved initials "M. R.", 40 mm.
 {Gross Weight: 32.3 dwts}

Estimate:
\$300 / \$500



382
Elgin 14k Yellow Gold Wristwatch.
 DIAL: Navette, white, gold dot and arrow hour markers, gold dauphine hands, Elgin. MOVEMENT: Manual wind, seventeen (17) jewels, adjusted, 902, Elgin USA. CASE: Oval, 14k yellow gold, snapback, 655645, 19 x 15 mm. BRACELET: 14k yellow gold, fancy link tapering from 11 mm to 6 mm, fold over clasp with safety chain, 6 3/4 inches.
 {Gross Weight: 13.2 dwts}

Estimate:
\$400 / \$600



383
Chanel Acier Stainless Steel Wristwatch.
 DIAL: Square, black cushion motif, silver baton hands, Swiss.
 MOVEMENT: Quartz (not opened).
 CASE: Square, stainless steel, Chanel Paris, Acier, Etanche 30m, quartz, Swiss made, Q.M.99256, Chanel 1993, four screw back, 19 x 19 mm. BRACELET: Stainless steel, cushion motif link measuring approximately 18.5 mm in width, double deployant clasp, Acier Chanel, Swiss made, 6 inches.
 {Gross Weight: 38.1 dwts}
 Note: Visible scratches.

Estimate:
\$300 / \$500



Estimate:
\$500 / \$700

**384
Boucheron Diamond, Stainless Steel Wristwatch.**

DIAL: Rectangle, silver, diamond hour markers, black and silver baton hands, Boucheron, Swiss made.
MOVEMENT: Quartz (not opened).
CASE: Rectangle, stainless steel, fluted, thirty-six full-cut diamonds weighing a total of approximately 0.35 cttw., four screw back, AK 424392, Boucheron, Swiss made, 32 x 21 mm. BRACELET: Stainless steel, fluted brick links measuring approximately 18 mm in width, slide bar clasp, 6 3/4 inches.
{Gross Weight: 38.4 dwts}



Estimate:
\$300 / \$400

**394
1963 US Half Dollar Roll \$20.00
40 Coins UNC Condition**



Estimate:
\$300 / \$400

**395
1963 US Half Dollar Roll \$20.00
40 Coins UNC Condition**



Estimate:
\$400 / \$600

**391
Collection of US Silver Dollars.
Morgan (21), Peace (5)
Common Dates Mixed
Condition. And US 1897(S)
Morgan Dollar Proof Like**



Estimate:
\$900 / \$1,200

**396
1964 US Half Dollars Three (3)
Rolls \$20.00. 120 Coins UNC
Condition**



Estimate:
\$350 / \$450

**392
Collection of US Silver Coins
Including Franklin Half Dollars
(40), Quarters 90% Silver (14)
and Dimes 90% Silver (5)**



Estimate:
\$1,000 / \$2,000

**401
Two Chinese Archaistic
Russet Jade Carvings.
{Length: 4 1/8 & 1 7/8 inches (10.5 &
1.9 cm)}.**



Estimate:
\$300 / \$400

**393
1963 US Half Dollar Roll \$20.00
40 Coins UNC Condition**



Estimate:
\$400 / \$600

**402
Seven Chinese Archaistic Jade
Pendants.
{Diameter of bi disc: 3 5/8 inches
(9.3 cm)}.**



403
Six Chinese Archaistic Jade Toggles and Pendants.
{Longest: 2 1/4 inches (5.7 cm)}.

Estimate:
\$400 / \$600



404
Group of Five Chinese Carved Jade Accessories.
Comprising a russet and white c-scroll dragon pendant, a celadon color jade gong pendant, a recumbent russet jade dog pendant, a carved whitish hue jade man with a dog, and a reticulated carved circular pendant.
{Tallest: 3 1/2 inches (9 cm)}.

Estimate:
\$400 / \$600



405
Five Chinese Carved White Jade Pendants.
{Longest: 2 5/8 inches (6.7 cm)}.

Estimate:
\$400 / \$600



406
Chinese White Jade Carving of Rams.
{Width: 2 5/8 inches (6.7 cm)}.

Estimate:
\$800 / \$1,200



407
Group of Four Chinese White Jade Carvings.
Comprising a circular form white jade pendant, carved in low relief, depiction a scholar under a pine tree issuing from a garden rock; an open work gourds and leaves oval form pendant; a rectangular plaque carved in raised relief depict a flower plant; a rectangular plaque carved in raised relief depict two scholars in conversation under a pine tree in landscape setting.
{Widest: 2 5/8 inches (6.7 cm)}.

Estimate:
\$400 / \$600



408
Three Chinese Carved Jade Bangle Bracelets.
{Largest: 3 1/8 inches (8 cm)}.

Estimate:
\$400 / \$600



409
Three Chinese White Jade Carvings.
Late 19th to Early 20th Century. First is a carved rectangular plaque, depicting an a scholar and his attendant along a rocky path before a pavilion, the reverse inscribed in shallow relief with a poet and a seal; second and third are belt hook with a curving shaft terminating in a dragon head hook, the underside with a raised oval button.
{Longest: 3 1/8 inches (8 cm)}.

Estimate:
\$600 / \$800



410
Chinese Carved White and Yellow Jade Plaque.
{Width: 4 1/4 inches (11 cm)}.

Estimate:
\$400 / \$600



411
Three Chinese Hardstone Carvings.
{Widest: 6 3/4 inches (17 cm)}.

Estimate:
\$400 / \$600



416
Chinese Rose Quartz Carvings and Lamp.

The first is a carved rose quartz vase with lid, the second is a carved figural rose quartz cover vase mounted as lamp base.
{Approximate height of lamp: 21 inches (53.3 cm)}.

Estimate:
\$300 / \$400



412
Chinese Spinach Jade Carving of an Immortal.
{Height: 6 inches (15.2 cm)}.

Estimate:
\$400 / \$600



417
Group of Eleven Chinese Rose Quartz Carvings.

{Tallest: 8 1/4 inches (21 cm)}.

Estimate:
\$400 / \$600



413
Group of Four Russet Jade Carvings.
{Largest: 7 inches (18 cm) approximately}.

Estimate:
\$400 / \$600



418
Eight Chinese Lapis Lazuli Carvings.

{Tallest: 5 1/8 inches (13 cm)}.

Estimate:
\$500 / \$700



414
Chinese Carved Jadeite Plaque.
The pendant carved in relief with Qiling beast, bats, fish, lotus and other auspicious objects to each side.
{Length: approximately 3 3/4 inches (9.5 cm)}.

Estimate:
\$400 / \$600



419
Group of Six Chinese Malachite Carvings.
{Tallest: 6 5/8 inches (16.8 cm)}.

Estimate:
\$600 / \$800



415
Group of Eleven Chinese Carved Agate Carvings.
{Tallest: 7 inches (17.5 cm)}.

Estimate:
\$600 / \$800



Estimate:
\$8,000 / \$12,000

420
Pair of Chinese Bronze Ritual Wine Vessels, FangHu.
The vessels of square section, displaying a green patina, each with a pair of taotie masks suspending loose-ring handles, summoned by square faceted cover and decorated with four flat, S-shaped finials at the corners .
(Height: 17 1/4 & 18 1/2 inches (43.8 & 47 cm) approximately).
Provenance:
Christies London 1992.
[Age related wear, dents, one cover has intensive damages].



Estimate:
\$300 / \$500

424
Chinese Export Silver Items.
{Longest: 9 inches (25 cm) approximately}.



Estimate:
\$400 / \$600

421
Chinese Archaistic Cast Bronze Vessel.
{Height: 13 inches (33 cm)}.



Estimate:
\$400 / \$600

425
Chinese Tang Style Gilt Heart Form Box.
{Width: 3 3/4 inches (9.5 cm)}.
[Abrasions, dent].



Estimate:
\$400 / \$600

422
Pair of Chinese Cloisonne Garlic Head Floral Vases.
{Height: 10 inches (25.4 cm)}.



Estimate:
\$300 / \$400

426
Chinese Pewter Covered Tureen with Hardstone Inlay.
The circular tureen with a pair of jade mounted beast handles, the cover cast with fruits inlaid with red and green hardstones, carved with Chinese characters to the exterior and the cover.
{Width: 15 1/2 inches (40 cm) approximately}.
[Overall wear].



Estimate:
\$300 / \$500

423
Tibetan Bronze Canister with Gilt Decorations.
{Height: approximately 14 1/2 inches (36.8 cm)}.



Estimate:
\$1,000 / \$1,500

427
Group of Bronze and Brass Figures.
{Tallest: 16 1/8 inches (41 cm)}.



Estimate:
\$800 / \$1,200

428
Group of Five Southeast Asian Buddha Statues.
{Tallest: 18 inches (45.7 cm)}.



Estimate:
\$500 / \$700

429
Two Sino-Tibetan Gilt Bronze Alloy Figures of Tara.
The first is a female Bodhisattva seated in dhyanasana atop a lotus pedestal, the right hand lowered in varada mudra and the left raised in vitarka mudra, the benevolent face framed by a foliate tiar; the second is a gilt bronze multiple arms and heads atop a double lotus bases. {Height: 5 3/4 & 4 1/2 inches (14.6 & 11.4 cm)}.



Estimate:
\$1,200 / \$1,600

433
Sino-Tibetan Gilt-Bronze Sakayamuni.
Seated in dhyanasana with hands in dhyanamudra, the serene face with downcast eyes and a meditative expression, flanked by a pair of long pendulous ears, the head and domed ushnisha covered with tight curls, all supported on a double-lotus throne. {Height: 9 inches (22.8 cm)}. Property from a San Francisco Collection.



Estimate:
\$400 / \$600

430
Chinese Gilt-Bronze Standing Bodhisattva.
The figure is cast standing on lotus pedestal, both hands holding ritual implements, with a small flaming mandorla at the back of the head. {Height: 8 inches (20.3 cm)}. Property from a San Francisco Collection.



Estimate:
\$900 / \$1,200

434
Tibetan Gilt-Bronze Buddhist Monk Seated on a Double-Lotus Throne.
Seated in dhyanasana on double-lotus base, his right hand raised in vitarka mudra holding a vajra, and his left hand in dhyanamudra holding a bell. {Height: 9 1/4 inches (23.5 cm)}. Property from a San Francisco Collection.



Estimate:
\$500 / \$700

431
Chinese Gilt-Bronze Standing Bodhisattva.
The figure is cast standing on lotus base, the left hand holding a ritual implement, adorned with bejewelled necklaces around the chest. {Height: 10 1/4 inches (26 cm)}. Property from a San Francisco Collection.



Estimate:
\$1,500 / \$2,000

435
Chinese Lingbi Stone Scholar's Rock with Base.
{Height: 16 inches (40.6 cm) excluding base}.



Estimate:
\$500 / \$700

432
Sino-Tibetan Gilt-Bronze Figure of Jambhala and Consort.
The God of Wealth, seated on the back of a foo dog, the right hand embracing his consort and the left hand holding a mouse, all supported on a double-lotus pedestal. {Height: 11 inches (28 cm)}. Property from a San Francisco Collection.



Estimate:
\$1,200 / \$1,500

436
Large Chinese Scholar's Rock with Carved Base.
The vertical, two-sided rock is pierced with several openings of various size that enhance the movement of the graceful profile, inscribed. {Height: 21 inches (53.3 cm) excluding base}.



437
Large Chinese Cinnabar Figural Vase.
{Height: 19 inches (48.3 cm)}.

Estimate:
\$300 / \$500



442
Chinese Zitan and Mixed Wood Box with Hardstone Inlay.
{Width: 6 5/8 inches (17 cm)}.

Estimate:
\$800 / \$1,200



438
Two Nepalese Wood Masks.
{Height: 11 1/2 & 9 3/4 inches (29.2 & 24.8 cm) excluding stand}.

Estimate:
\$800 / \$1,200



443
Chinese Rosewood Table Screen with Marble Inset*.
The square marble slab veined in shades of gray to black, mounted within a hardwood frame supported on a hardwood stand.
{Height: 22 3/4 inches (58 cm)}.

Estimate:
\$500 / \$800



439
Chinese Carved Rosewood Gilt Buddha Wall Decoration*.
{Diameter: 31 1/2 inches (80 cm)}.

Estimate:
\$400 / \$600



444
Set of Four Chinese Brass Hardstone Overlaid Wall Plaques.
{Each Plaque: 45 x 16 inches (114.3 x 40.6 cm)}.

Estimate:
\$300 / \$500



440
Two Chinese Carved and Painted Wood Buddha Statues.
{Height: 10 1/2 & 9 1/4 inches (26.7 & 23.5 cm) approximately}.

Estimate:
\$300 / \$500



445
Pair of Chinese Gilt Wood Carved Panels.
{36 x 30 inches (91.4 x 76.2 cm)}.

Estimate:
\$400 / \$600



441
Six Chinese Carved Wood and Bamboo Brush Holders.
{Tallest: 9 3/4 inches (24.8 cm)}.

Estimate:
\$400 / \$600



446
Chinese Blue and White Twelve Light Porcelain Chandelier.
{Height: 20 inches (50.8 cm); Width: 34 inches (86.4 cm)}.

Estimate:
\$600 / \$800



447
Chinese Blue and White Porcelain Six Light Chandelier.
{Height: 22 inches (56 cm); Width: 30 inches (76.2 cm)}.

Estimate:
\$600 / \$800



451
Chinese Folded Dragon Legs and Brass Top Circular Table.
{28 1/2 x 30 inches (72.4 x 76.2 cm)}.
Provenance:
Collection of Mary Margaret and Col. Wilbur Haven, who were assigned as US liaison to the Chinese government in Nanjing, their collection mostly acquired in the mid 1940s, and thence by descent within the family.
[Overall wear, losses].

Estimate:
\$600 / \$800



448
Pair of Chinese Elmwood Official's Hat Armchairs.
Late 19th Century.
Each composed with a shaped headrest supported by the solid-panel S-shaped backsplat, with pierced carved openwork Ruyi pendant decoration the arms supported by S-shaped side posts and goose-neck front posts, the rectangular seat frame supported on circular legs joined by a curved apron above stepped stretchers and a foot rail, the wood patinated to a rich reddish tone.
{45 1/2 x 25 1/4 x 19 inches (115.6 x 64 x 48.3 cm) each approximately}.

Estimate:
\$800 / \$1,200



452
Chinese Hardwood Altar Table.
20th Century.
{35 x 68 x 17 3/4 inches (89 x 172.7 x 45 cm)}.

Estimate:
\$500 / \$750



449
Chinese Carved Rosewood Drum Form Stool*.
{19 x 16 inches (48.3 x 40.6 cm)}.

Estimate:
\$300 / \$500



453
Chinese Gilt and Polychrome Black Lacquer Altar Table.
20th Century.
{32 1/2 x 49 1/2 x 17 inches (82.6 x 125.7 x 43.2 cm)}.
[Age related cracks, losses].

Estimate:
\$500 / \$750



450
Pair of Chinese Bamboo Simulated Rosewood Armchairs*.
{35 x 27 x 19 inches (89 x 68.6 x 48.3 cm) each approximately}.

Estimate:
\$800 / \$1,200



454
Chinese Rosewood Square Wine Table*.
{31 1/2 x 35 1/2 x 23 inches (80 x 90.2 x 58.4 cm)}.

Estimate:
\$600 / \$800



455
Chinese Rosewood Altar Table with Marble Inset*.
{30 x 54 x 17 1/2 inches (76.2 x 137.2 x 44.5 cm) approximately}.

Estimate:
\$600 / \$800



459
Chinese Embroidered Lady's Robe and Skirt.
{Length of Robe: 37 1/2 inches (95.3 cm); Length of Skirt: 41 1/2 inches (105.4 cm)}.
[Loose threads, staining].

Estimate:
\$800 / \$1,000



456
Chinese Rosewood Circular Low Kang Table*
{14 x 26 inches (35.6 x 66 cm)}.

Estimate:
\$400 / \$600



460
Chinese Yellow Ground Taoist Priest Dragon Robe.

Of rectangular form with a central opening at the front, the two front panels with cranes amidst clouds, with band of black silk collar detailed with dragons and floral motif. The back of the robe elaborately decorated with a cosmic diagram featuring a sun, moon, constellations and central pagoda paradise scene, the pagoda flanked by two writhing dragons, surrounded by nine dragons in the roundels and Buddhist treasure symbols, all among cloud scrolls, and other symbols within borders incorporating alternating flaming trigrams and auspicious emblems, and front sleeve openings, with metallic gold-wrapped threads on yellow silk ground.
{Overall width: 70 inches (177.8 cm)}.

Estimate:
\$7,500 / \$10,000



457
Chinese Carved Circular Rosewood Stand*.
{49 1/2 x 19 inches (125.7 x 48.3 cm)}.

Estimate:
\$300 / \$500



458
Chinese Black Lacquer Cabinet on Stand.
Of rectangular form, fitted with two hinged doors above a deep apron, interior with drawers of various sizes, painted to the front with gilt depicting scene of a lady and her attendants in a garden landscape, with gnarled branches issuing clusters of leaves emerging from rocks, all against a black lacquered ground, the hinges and lock plates detailed with stylized pattern, all supported on a cabriolet legged lacquered wood stand.
{65 x 41 x 20 inches (165 x 104 x 50.8 cm)}.
[Age related cracks].

Estimate:
\$1,500 / \$2,000



461
Group of Chinese Embroideries and Wood Carved Decoration.
{Framed Embroidery: 7 x 27 1/2 inches (17.8 x 70 cm); Wood Carving: 11 x 18 inches (28 x 45.7 cm)}.

Estimate:
\$300 / \$500



462
Anonymous: Six Erotic Paintings.
Mounted as handscroll, ink and color on silk.
{Each: 11 x 14 3/4 inches (28 x 37.5 cm)}.
[Creasing, staining].

Estimate:
\$400 / \$600



463
In the Manner of Wen Zhengming (1470-1559): Landscape.
 Handscroll, ink and color on silk, bearing a signature and four seals. {13 5/8 x 67 1/2 inches (34.6 x 171.5 cm)}.

Estimate:
\$800 / \$1,200



464
In the Manner of Qi Baishi (1864-1957): Chicks and Lotus.
 Hanging scroll, ink and color on paper, dated, inscribed, signed with one seal. {54 x 13 1/4 inches (137.2 x 33.7 cm)}. [Minor creasing].

Estimate:
\$400 / \$600



465
Attributed to Jin Cheng (1878-1926): Bees and Flower.
 Hanging scroll, ink and color on paper, dated, inscribed, signed with two seals. {36 x 17 inches (91.4 x 43.2 cm)}. [Creasing, staining].

Estimate:
\$400 / \$600



466
Attributed to Deng Feng (1894-1964): Peony.
 Hanging scroll, ink and color on paper, titled, dated, inscribed, signed with two seals. {40 x 14 inches (101.6 x 35.6 cm)}.

Estimate:
\$400 / \$600



467
Attributed to Qi Gong (1912-2005): Landscape.
 Hanging scroll, ink and color on paper, inscribed, signed with two seals. {37 1/4 x 13 inches (94.6 x 33 cm)}.

Estimate:
\$400 / \$600



468
Attributed to Huang Yongyu (B. 1924): Lotus.
 Mounted scroll, ink and color on paper, dated, inscribed, signed with three seals. {19 1/2 x 22 1/2 inches (49.5 x 57.2 cm)}. [Creasing with associated losses, foxing].

Estimate:
\$400 / \$600



469
Two Tibetan Painted Thangkas.
 {16 x 12 inches (40.6 30.5 cm) & 23 x 17 inches (54.8 x 43.2 cm)}. [Toning and fading, creasing with associated losses].

Estimate:
\$1,000 / \$1,200



470
Chinese Teracotta Votive Burial Figure of a Warrior.
 Han Dynasty or later. Dressed in the layered armor and peaked helmet of a warrior. In standing pose holding a weapon, traces of painted finish. {Height: 18 1/4 inches (46.4 cm) approximately}.

Estimate:
\$500 / \$700



471
Chinese Tall Ceramic Glazed Urn.
 Han Dynasty. {Height: 30 1/2 inches (77.5 cm)}. [Extremely fragile].

Estimate:
\$400 / \$600



472
Chinese Wanli Type Double Gourd Blue and White Floral Vase.
 Painted with flower head and leaf scroll bands along the upright rim and between the two sections covered with floral and other plant motif. {Height: 8 1/2 inches (21.5 cm)}.

Estimate:
\$600 / \$800



Estimate:
\$1,200 / \$1,800

473
Chinese Carved Qingbai Meiping Vase.
The tapering ovoid body with broad shoulder and narrow ring neck, carved with an overall pattern of foliate scrolls, covered overall with a pale bluish glaze pooling in the carved recesses and stopping at the foot to reveal the pale white body. {Height: 9 1/4 inches (23.5 cm)}.
Provenance:
Collection of Dr. Reri Fujimura, Berkeley, California.



Estimate:
\$2,000 / \$3,000

476
Chinese Dingyao Carved White Glazed Dragon Handled Amphora.
The tall ovoid body below a waisted neck that rises to a cupped mouth, flanked by a pair of dragon handles mounted at the shoulder and clasping the rim, the body carved with two peony blossoms on undulating leafy stems, all between a band of radiating leaves on the shoulder and overlapping upright lappets that encircle the foot, covered overall with a lustrous ivory colored glaze, the unglazed foot reveals the dense white stoneware. {Height: 12 inches (30.5 cm)}.
Property from a San Francisco Collection.



Estimate:
\$400 / \$600

474
Chinese Qingbai 'Phoenix-Head' Ewer.
The globular body surmounted by a double-stranded handle and curved spout, the neck ending in a freely carved phoenix head with sharp pointed beak surmounted with a funnel opening on top of the head, covered overall in a transparent blue-tinged glaze.

{Height: 9 1/2 inches (24 cm)}.
Provenance:
Property from the collection of Professor E.T. Hall, Portland, Oregon.



Estimate:
\$700 / \$900

477
Chinese Dingyao Carved Ivory Glazed Truncated Meiping Vase.
The broad circular body with a rounded shoulder, surmounted by a short, waisted neck with a flat, everted rim, finely carved around the body with meandering lotus scrolls, covered overall with an ivory-colored glaze, the base of the foot partially glazed revealing the dense buff body. {Height: 5 1/8 inches (13 cm)}.
Property from a San Francisco Collection.



Estimate:
\$400 / \$600

475
Chinese Ding Ware Type Wine Pot with Bowl.
{Height of wine pot: 6 3/4 inches (17 cm); Diameter of bowl: 5 1/4 inches (14 cm)}.



Estimate:
\$1,000 / \$1,500

478
Large Chinese Carved Dingyao White Glazed Bowl.
Finely potted with deeply rounded sides, the interior freely carved with a bold single fish swimming amidst aquatic plants, the exterior carved with overlapping lappets, covered overall with a rich ivory-colored glaze, the rim bound in gilt-metal, the partially glazed foot reveals the dense white body. {Diameter: 11 1/2 inches (29.2 cm)}.
Property from a San Francisco Collection.



Estimate:
\$900 / \$1,000

479
Chinese Dingyao Persimmon-Brown Glazed Meiping Vase.
The elegant ovoid body with prominent rounded shoulders, short waisted neck, and everted lip, covered overall with a lustrous persimmon-brown glaze that ends neatly above the base, the unglazed base revealing the gray body. {Height: 10 3/4 inches (27.3 cm)}. Property from a San Francisco Collection.



Estimate:
\$800 / \$1,200

483
Large Chinese Ding-Type Conical Bowl.
Of wide flaring sides with everted rim, the interior incised with a bird among lotus plants, covered allover with a rich pale ivory glaze, the rim bound in a gilt metal band. {Width: 8 3/4 inches (22.3 cm)}. Provenance: Collection of Dr. Reri Fujimura, Berkeley, California.



Estimate:
\$1,000 / \$1,500

480
Chinese Dingyao Black Glazed Conical Bowl.
The deep gently curved sides rising to an unglazed rim, the body covered with a rich purplish black glaze thinning to a russet brown below the rim, the glaze terminates unevenly above the unglazed foot ring to reveal the white body. {Diameter: 8 3/4 inches (22.2 cm)}. Property from a San Francisco Collection.



Estimate:
\$400 / \$600

484
Chinese Cizhou Incised Bowl.
Of deep rounded body rising from a splayed foot, painted with a wide dark brown band with incised decorations to a cream white slip ground. {Width: 5 1/2 inches (14 cm)}. Provenance: Collection of Dr. Reri Fujimura, Berkeley, California.



Estimate:
\$1,500 / \$2,000

481
Chinese Black Glazed Ding-Type Yuhuchun Vase.
Of elegant pear-form body rising to a slender neck with a flared rim, covered overall in a lustrous black glaze with deep bluish tone, the base partially glazed revealing the dense white body. {Height: 12 inches (30.5 cm)}. Provenance: Collection of Dr. Reri Fujimura, Berkeley, California.



Estimate:
\$400 / \$600

485
Four Chinese Brown Glazed Tea Bowls.
{Diameter: 3 3/4 inches (9.5 cm) each}.



Estimate:
\$1,200 / \$1,500

482
Chinese Carved Ding-Type Lobed Deep Bowl.
The deep flaring sides indented into six lobes, the interior freely carved and combed with a fish among aquatic plants, covered overall with a ivory glaze, the rim bound in gilt metal band. {Width: 7 1/2 inches (19 cm)}. Provenance: Collection of Dr. Reri Fujimura, Berkeley, California.



Estimate:
\$900 / \$1,200

486
Chinese Jizhou Brown Glazed 'Tortoise Shell' Pear-Shaped Vase.
The bottle-form body rising from a ring foot to a slender waisted neck and everted lip, applied overall with a dark brown glaze with splashes of medium olive-brown falling in drizzling streaks, the recessed base washed in a pale brown slip, the foot ring revealing a buff-colored body. {Height: 6 5/8 inches (17 cm)}. Property from a San Francisco Collection.



487
Chinese Molded Lidded Jar and Foliated Dish.
 {Width: 5 3/4 inches (14.5 cm) each approximately}.

Estimate:
\$400 / \$600



488
Chinese Black Glazed Conical Bowl.
 Of conical form, rising from a tapered foot to a gently flaring rim, covered overall in a lustrous black glaze streaked with irregular pale russet splashes, the glaze stopping above the foot revealing the buff stoneware body, the rim bound in gilt metal band.
 {Width: 6 1/2 inches (16.5 cm)}.
 Provenance:
 Collection of Dr. Reri Fujimura, Berkeley, California.

Estimate:
\$1,500 / \$2,000



489
Chinese Yaozhou Celadon Carved Circular Jar.
 The compressed globular body rising from a ring foot and terminating in a short cylindrical neck, deeply carved with a central graceful undulating scroll, amid overlapping peony petals, the detailed veining delineated by skillfully incised freely drawn curves, covered in an olive-green glaze, pooling to a darker tone in the recessed areas, the base unglazed revealing the reddish-brown body.
 {Diameter: 7 3/4 inches (20 cm)}.
 Property from a San Francisco Collection.

Estimate:
\$1,200 / \$1,800



490
Chinese Yaozhou Carved Celadon Meiping Vase.
 Of tall and tapering body with a short, waisted neck and flanged rim, covered with a thick lustrous olive-green glaze, pooling to dark green in the recesses, the unglazed foot revealing the reddish-brown body.
 {Height: 7 inches (18 cm)}.
 Property from a San Francisco Collection.

Estimate:
\$900 / \$1,200



491
Large Chinese Longquan Incised Celadon Tripod Censer.
 With rounded sides rising to the short neck and everted rim, supported on three short legs, decorated with a wide band of diaper pattern, the exterior is covered with celadon glaze that continues over the rim down to center of the unglazed interior.
 {Diameter: 14 inches (35.6 cm)}.
 Property from a San Francisco Collection.

Estimate:
\$1,000 / \$1,500



492
Chinese Longquan Celadon Rectangular Censer.
 The rectangular body with rounded corners supported on four short feet, and with a waisted neck beneath a wide flat rim applied with a pair upright loop handles, covered overall with a rich smooth bluish green glaze suffused with fine crackles, the glaze thinning to mushroom tone on the edges.
 {Width: 6 1/4 inches (16 cm)}.
 Provenance:
 Collection of Dr. Reri Fujimura, Berkeley, California.

Estimate:
\$1,800 / \$2,500



493
Pair of Chinese Celadon Square Form Vases.
 {Height: 11 inches (28 cm) each}.

Estimate:
\$400 / \$600



494
Two Chinese Celadon Glazed Vessels.
 Comprising a charger and a bowl.
 {Diameter: 6 3/4 & 13 3/8 inches (17 & 34 cm)}.
 [Charger restored].

Estimate:
\$400 / \$600



Estimate:
\$600 / \$800

495
Two Chinese Pale Blue Celadon Glazed Bowls.
Each of rounded sides, one potted with lotus petals on the exterior, the other molded with a leaping three-clawed dragon in the interior, all covered with a pale bluish celadon glaze.
{Diameter: 7 1/4 & 6 3/4 inches (18.5 & 17 cm)}.



Estimate:
\$800 / \$1,200

499
Chinese Ge Type Tripod Censer.
With an everted rim to the short cylindrical neck above the compressed body raised on tripod supports, the buff colored ground suffused with dark and gold hue crackles.
{Diameter: 5 3/8 inches (13.7 cm); Height: 4 inches (10.2 cm)}.



Estimate:
\$400 / \$600

496
Pair of Chinese Celadon Conical Bowls.
{Width: 5 1/8 inches (13 cm) each}.



Estimate:
\$500 / \$700

500
Large Chinese Ge Type Baluster Vase.
Well potted in baluster form rising to a broad waisted neck surmounted by a thick lipped rim, the neck set with a pair of archaic Lion Masks, covered overall with a rich and thick greyish blue glaze suffused with a network of dark grey craquelure and finer golden crackles.
{Height: 19 inches (48.3 cm)}.



Estimate:
\$400 / \$600

497
Chinese Celadon Glazed Vase and Tripod Censer.
{Height: 9 1/2 & 3 1/8 inches (24.2 & 8 cm)}.



Estimate:
\$1,000 / \$1,500

501
Chinese Ge Type Tan Mallow-Form Brush Washer.
Of distinctive floral blossom form, the flared sides indented to reflect ten petals, covered all over with a rich tan glaze accented with a dense network of fine dark gray crackle that intermingle with finer golden russet crackle patterns, with six spur marks on the base.
{Diameter: 5 inches (12.7 cm)}.
Property from a San Francisco Collection.



Estimate:
\$1,000 / \$1,500

498
Chinese Celadon 'Boys' Bowl.
of conical form with gently rounded sides rising from a short slightly tapered foot, the interior carved with two boys among stylized floral scrolls, applied overall with a transparent pale blue glaze pooling in the recesses, the recessed base partially glazed revealing the body burnt russet in the firing, the rim bound in gilt metal.
{Width: 7 inches (17.8 cm)}.
Provenance:
Collection of Dr. Reri Fujimura, Berkeley, California.



Estimate:
\$1,000 / \$1,500

502
Chinese Ge Type Brown Crackle Glazed 'Bamboo Neck' Bottle Vase.
The elegant compressed globular body surmounted by a tall tapering neck below the everted lip, the columnar neck and shoulders ringed with raised bands simulating bamboo, covered with a creamy pale brown glaze suffused with dense gray crackle that is intermingled with more delicate golden russet crackle.
{Height: 8 3/4 inches (22.2 cm)}.
Property from a San Francisco Collection.



Estimate:
\$1,000 / \$1,500

503
Chinese Ge Type Tan Crackle Glazed Pear-Shaped Vase.
The elegant pear-shaped body rising to form a gently tapering neck, covered overall with a pale beige glaze suffused with a dense network of dark gray crackle intermingled with a matrix of delicate golden hued crackle.
{Height: 7 1/2 inches (19 cm)}.
Property from a San Francisco Collection.



Estimate:
\$600 / \$800

507
Chinese Ge-Type Cupstand.
The flared dish supported on a splayed foot and centered with a cup holder, covered all over with a crackled glaze.
{Width: 5 1/2 inches (14 cm)}.
Provenance:
Collection of Dr. Reri Fujimura, Berkeley, California.



Estimate:
\$1,200 / \$1,800

504
Chinese Ge-Type Circular Brushwasher.
The rounded body with shallow curving sides rising from a recessed base with six spur marks, covered all over with a rich milky glaze suffused with a network of iron-gray crackles.
{Width: 6 1/2 inches (16.5 cm)}.
Provenance:
Collection of Dr. Reri Fujimura, Berkeley, California.



Estimate:
\$400 / \$600

508
Chinese Ge-Type Basin Form Brushwasher.
Of shallow rounded sides rising to a wide everted rim, the flat base with eight spur marks, covered overall with a creamy glaze suffused with iron black crackles joined with finer golden russet crackles.
{Width: 5 1/4 inches (13.3 cm)}.
Provenance:
Collection of Dr. Reri Fujimura, Berkeley, California.



Estimate:
\$1,500 / \$2,000

505
Chinese Ge-Type 'Bamboo Neck' Bottle Vase.
Potted with a compressed globular body with a sloping shoulder, rising to a tall tapered neck surmounted by a wide dish-shaped mouth-rim, neck and body accentuated with raised fillets resembling bamboo nodes, covered overall with a thick ash colored glaze suffused with dark gray crackles, the unglazed foot revealing the iron dark body.
{Height: 11 inches (28 cm)}.
Provenance:
Collection of Dr. Reri Fujimura, Berkeley, California.



Estimate:
\$400 / \$600

509
Three Chinese Junyao Type Vases.
{Tallest: 7 1/4 inches (18.5 cm)}.



Estimate:
\$1,000 / \$1,500

506
Chinese Ge-Type Yuhuchuan Vase.
The pear-shape body rising from a tall foot to a tapering neck with a wide flared rim, covered overall with a pale milky glaze suffused with iron-gray crackles, the glaze thinning to dark mushroom on the rim.
{Height: 7 inches (17.8 cm)}.
Provenance:
Collection of Dr. Reri Fujimura, Berkeley, California.



Estimate:
\$400 / \$600

510
Chinese Jun Type Deep Bowl.
{Diameter: 7 1/2 inches (19 cm)}.



Estimate:
\$500 / \$700

**511
Chinese Guan-Type Bottle Vase.**
Potted with a globular body surmounted with a wide column neck with lipped rim, covered all over with a mottled bluish green glaze suffused with golden russet crackles. {Height: 6 inches (15.2 cm)}.
Provenance:
Collection of Dr. Reri Fujimura, Berkeley, California.



Estimate:
\$300 / \$500

**515
Three Chinese Ox Blood Baluster Vases.**
Comprising three similar shape ox blood vases, all with flared mouths. {Tallest: 22 1/2 inches (57.2 cm)}. [Chips to the bases].



Estimate:
\$800 / \$1,200

**512
Chinese Guan-Type Tripod Censer with Handles.**
The compressed globular body rising from three short tapering feet to an everted rim set with two upright handles, covered overall with a luminous grayish blue glaze suffused with iron-gray crackles. {Width: 4 1/4 inches (10.8 cm)}.
Provenance:
Collection of Dr. Reri Fujimura, Berkeley, California.



Estimate:
\$300 / \$500

**516
Four Chinese Ox Blood Jars.**
Two pairs of different heights, the shorter pair lacking lids. {Height: 12 1/2 & 7 1/4 inches (31.8 & 18.4 cm)}. [Chips, one pair lacking lids].



Estimate:
\$1,200 / \$1,800

**513
Chinese Guan-Type Fluted Yuhuchun Vase.**
Of pear-shape body with fluted sides rising to a tapering neck to a flared rim, applied all over with a crackled bluish green glaze. {Height: 9 inches (23 cm)}.
Provenance:
Collection of Dr. Reri Fujimura, Berkeley, California.



Estimate:
\$300 / \$500

**517
Three Chinese Ox Blood Glaze Baluster Vases.**
{Tallest: 18 inches (45.7 cm)}. [Age related wear and chips on the bases].



Estimate:
\$1,200 / \$1,800

**514
Chinese Guan-Type Foliate Brushwasher.**
The flaring sides indented with eight petal lobes, covered overall with a crackled glaze of grayish blue tone, the glaze thinning to dark mushroom color on the rim. {Width: 7 inches (17.8 cm)}.
Provenance:
Collection of Dr. Reri Fujimura, Berkeley, California.



Estimate:
\$800 / \$1,200

**518
Large Chinese Pear-Shaped Bottle Vase, Yuhuchunping.**
{Height: 21 inches (53.5 cm)}.



Estimate:
\$600 / \$800

**519
Chinese Flambe Glazed Baluster Vase.**
{Height: 18 1/2 inches (47 cm)}.



Estimate:
\$400 / \$600

520
**Large Chinese Flambé Glazed
Bottle Vase.**
{Height: 20 1/2 inches (52 cm)}.



Estimate:
\$800 / \$1,200

521
**Large Chinese Baluster Vase
with Handles.**
The baluster body rising from a short straight foot to a tall waisted neck with a pair fish-form handles, decorated with a pair panels each painted with landscape, all reserved on a carved floral ground covered in celadon glaze, the base with a six-character Qianlong seal mark.
{Height: approximately 17 3/4 inches (45 cm)}.



Estimate:
\$1,000 / \$1,500

522
**Chinese Monochrome
Porcelain Brush Washer with
Base.**
Celadon glazed lobed shallow circular brush washer with a carved fitted rosewood base.
{Diameter: approximately 5 3/8 inches (13.7 cm)}.



Estimate:
\$300 / \$500

523
**Pair of Chinese Porcelain
Parrots.**
{Height: 8 1/2 & 8 1/4 inches (21.6 & 21 cm)}.



Estimate:
\$300 / \$500

524
**Chinese Porcelain Goose
Tureen and a Foo Dog.**
{Width: 13 inches (33 cm) each approximately}.
[Foo dog with loss].



Estimate:
\$2,000 / \$3,000

525
**Set of Four Chinese Famille
Rose Enameled Porcelain
Plaques.**
Republic Period.
Each of rectangular form, painted in famille rose enamel with a man herding a water buffalo, a fisherman, a man carrying fire wood, and an official, each inscribed and signed 'Wang Qi (1884-1934)' with two seals.
{Each Plaque: approximately 15 1/2 x 10 1/2 Inches (40 x 26.7 cm)}.



Estimate:
\$400 / \$600

526
**Small Chinese Famille Rose
Water Coup with Inscriptions.**
Of rounded body with broad shoulder, painted with a rooster amid flowering plant, the base with an iron red Hongxian mark.
{Height: approximately 3 inches (7.6 cm); diameter: 3 5/8 inches (9.2 cm)}.



Estimate:
\$600 / \$800

527
**Large Chinese Famille Verte
Figural Brush Washer.**
Of compressed circular form with incurved side, painted in the interior with an official holding court with military attendants, vibrantly enameled to the central medallion with a qilin in landscape, the exterior decorated with four rectangular panels each enclosing an emblem, the base with six-character Kangxi mark.
{Diameter: 11 inches (28 cm)}.
[Age related wear and enamel losses].



Estimate:
\$6,000 / \$8,000

**528
Chinese Fine Famille Rose
Pink Sgraffito-Ground Ovoid
Vase.**
The ovoid body and neck delicately enameled in polychrome with formal lotus sprays surrounded by green foliate scrolls, multi-colored trailing clouds, and bats in iron-red, interspersed with the 'Eight Buddhist Emblems', all reserved on a pale pink sgraffito ground bordered by bands of petal lappets and ruyi heads, with foliate sprays on the spreading foot and reserved on a yellow band at the base of the neck below the pair of gilt and iron-red dragon-form handles, the interior of the neck enameled in pale turquoise repeated on the base surrounding the nianhao, with a Qianlong seal mark in iron-red.
{Height: 19 1/4 inches (49 cm)}.
Property from a San Francisco Collection.



Estimate:
\$600 / \$800

**531
Chinese Famille Rose Enamel
Porcelain Figure of Shoulao.**
Late Qing / Republic Period. Dressed in elaborately yellow ground robes with floral and "Shuo" longevity roundels decorations, his face bearing a joyous expression, the bearded figure holds a bamboo form tribute on his left arm, a square four character maker hall mark 'Deng Yi Fu Zao' impressed to the unglazed base.
{Height: approximately 18 1/2 inches (47 cm)}.



**532
Chinese Famille Verte
Porcelain Dragon and Phoenix
Pillow.**
{Width: 13 inches (33 cm)}.



Estimate:
\$500 / \$750

**529
Set of Eight Chinese Famille
Rose Figures of Immortals.**
Late Qing Dynasty to Republic Period.
Each modeled standing wearing brightly enameled robes and holding their attribute.
{Height: 9 3/4 inches (24.8 cm)}.

Estimate:
\$800 / \$1,200



**533
Pair of Chinese Famille Rose
Enameled Bottle Neck Vases.**
Accompanied by wooden box.
{Height: 6 inches (15.3 cm) each}.



Estimate:
\$300 / \$500

**530
Chinese Famille Jaune
Porcelain Oil Jar and a Square
Vase.**
The oil jar is accompanied by a certificate of identify issued by Hong Kong Art Group, dated August 22, 1980; the square form vase with floral motif, with fitted wood stand.
{Height: 10 & 16 inches (25.4 & 40.6 cm)}.

Estimate:
\$1,500 / \$2,000



Estimate:
\$400 / \$600

**534
Pair of Chinese Famille Rose
Square Form Hat Holders.**
{Height: 11 3/8 inches (29 cm) each}.



536
Chinese Figural Gilt Vase.
{Height: 6 1/2 inches (16.5 cm)}.

Estimate:
\$600 / \$800



541
Four Chinese Export Bowls and Dishes.
{Diameter of the largest bowl: 5 1/2 inches (14 cm)}.
[Hairline cracks to one plate, repairs to the bowl, chip to the cup].

Estimate:
\$400 / \$600



537
Chinese Eggshell Porcelain Figural Vase.
Finely painted with a beauty wearing a elaborate robe carrying a flower basket in the garden, inscribed with poem, signed and stamped with three red seals.
{Height: 8 3/8 inches (21.3 cm)}.

Estimate:
\$300 / \$500



542
Large Chinese Blue and White Floral Plate.
{Diameter: 14 1/2 inches (36.8 cm)}.
[Hairline crack].

Estimate:
\$800 / \$1,200



538
Pair of Large Chinese Porcelain Vases with Gilt Highlights.
{Height: 24 3/8 inches (62 cm) each excluding stands}.

Estimate:
\$400 / \$600



543
Pair of Chinese Blue and White Elongated Vases.
Accompanied by fitted wood stands.
{Height: 6 3/8 inches (16 cm) each}.
[Hairline crack and gold fill repaired rims].

Estimate:
\$400 / \$600



539
Pair of Chinese Wucai Baluster Vases.
{Height: 12 1/2 inches (31.8 cm)}.

Estimate:
\$600 / \$800



544
Two Pairs of Chinese Blue and White Plates.
{Largest diameter: 7 5/8 inches (19.5 cm)}.
[Extensive cracks and repairs].

Estimate:
\$600 / \$800



540
Chinese Enameled Double Gourd Vase.
The rounded body decorated with scrolling pink flowers and flanked by gilt painted handles suspended with faux twisted ribbons, bearing a Qianlong mark to the base.
{Height: 11 inches (28 cm)}.

Estimate:
\$300 / \$400



545
Two Pairs of Chinese Blue and White Plates.
{Largest plate diameter: 8 5/8 inches (22 cm)}.
[Extensive cracks and repairs, chips].

Estimate:
\$600 / \$800



546
Six Chinese Blue and White Porcelain Items.
 {Tallest: 8 inches (20 cm)}.
 [Extensive cracks and repairs].

Estimate:
\$500 / \$700



547
Two Pairs of Small Chinese Blue and White Vases and Covers.
 {Tallest: 4 1/4 inches (11 cm)}.
 [Extensive cracks and repairs].

Estimate:
\$400 / \$600



548
Seven Chinese Blue and White Plates.
 {Diameter: 6 1/4 inches (15.5 cm) each approximately}.
 [Extensive cracks and chips].

Estimate:
\$400 / \$600



549
Chinese 'Arabic Inscribed' High Stem Bowl.
 The deep rounded sides with flared rim supported on a high splayed foot, painted to the interior with a medallion enclosing an Arabic inscribed panel, the exterior decorated with further Arabic characters evenly spaced among floral scrolls.
 {Width: 6 3/4 inches (17 cm)}.
 Provenance:
 Property from the collection of Professor E.T. Hall, Portland, Oregon.

Estimate:
\$1,000 / \$1,500



550
Chinese Blue and White 'Tibetan Script' Dish.
 Of square section with bracket corners and flared rim, the center medallion painted in brilliant cobalt blue with meandering lotus surrounded by Lantsa characters on the cavetto, the base with a double ring circle enclosing an inscription with ruyi scroll.
 {Width: 7 3/4 inches (20 cm)}.
 Provenance:
 Property from the collection of Professor E.T. Hall, Portland, Oregon.

Estimate:
\$400 / \$600



551
Chinese Blue and White Brushrest.
 Potted in the form of five mountain peaks on a flat oval base, each sides painted with a scholar and acolyte in an garden setting.
 {Width: 8 inches (20.3 cm)}.
 Provenance:
 Property from the collection of Professor E.T. Hall, Portland, Oregon.

Estimate:
\$600 / \$800



552
Chinese Blue and White Pillow.
 Of rectangular form with flared scroll ends, painted on the top with two ladies and attendants in a garden setting, the ends decorated with dragons, a six character Longqing mark along the base.
 {Width: 11 inches (28 cm)}.
 Provenance:
 Property from the collection of Professor E.T. Hall, Portland, Oregon.

Estimate:
\$600 / \$800



553
Two Chinese Blue and White Porcelain Items.
 Comprising a blue and white vase, and a blue and underglaze red porcelain plaque.
 {Height of vase: 7 7/8 inches (20 cm): Width of plaque: 8 7/8 inches (22.5 cm)}.

Estimate:
\$600 / \$800



554
Twelve Chinese Blue and White Porcelain Zodiac Figures.
{Height: 13 inches (33 cm) each approximately}.
[Cracks].

Estimate:
\$400 / \$600



555
Large Chinese Orange Bowl with Blue & White Decoration
{Diameter: 11 1/4 inches (28.5 cm)}.

Estimate:
\$400 / \$600



556
Two Chinese Porcelain Jars.
Comprising a blue and white dragon jar and a wucai covered jar with horse and floral motif.
{Heights: 7 & 7 1/2 inches (17.8 & 19 cm)}.
[Hairline cracks, losses].

Estimate:
\$400 / \$600



557
Large Chinese Underglaze Red and Blue Vase.
The cylindrical Lantern form vase painted with various butterflies and flowers on the body, the neck is with band of underglaze red and blue diaper pattern decoration and should is with a band of underglaze blue Ruyi pendants, all above a band of upright lappets.
{Height: 16 inches (40.6 cm)}.

Estimate:
\$400 / \$500



558
Chinese Copper-Red Kendi Ewer.
The compressed globular body mounted with a large spout and a flanged neck, decorated all around with meandering peony between ruyi bands.
{Width: 8 inches (20.3 cm)}.
Provenance:
Property from the collection of Professor E.T. Hall, Portland, Oregon.

Estimate:
\$400 / \$600



559
Chinese Turquoise Ground Grisaille Peony Jardiniere.
Sturdily potted with rounded sides decorated in black grisaille with leafy peony branches issuing large blooms in various stages of growth reserved on a turquoise ground, the rim inscribed with a four-character gilt mark.
{Diameter: 14 inches (35.6 cm)}.
Provenance:
Property from the collection of Professor E.T. Hall, Portland, Oregon.

Estimate:
\$800 / \$1,200



560
Two Chinese Blue and White Export Plates.
{Diameters: 10 1/8 & 10 5/8 inches (26 & 27 cm)}.
[Cracked and restored].

Estimate:
\$500 / \$700



561
Pair of Chinese Imari Plates.
Two dinner plates each decorated to the centre with flower arrangements with gilt high light and to the rim.
{Diameter: 8 5/8 inches (22 cm)}.

Estimate:
\$500 / \$700



562
Japanese Style Blue and White Porcelain Bowl.
{Width: 7 inches (17.8 cm)}.

Estimate:
\$400 / \$600



566
Two Japanese Folding Screens.
{36 x 67 inches (91.4 x 170.2 cm) & 35 x 100 inches (89 x 254 cm)}.

Estimate:
\$400 / \$600



563
Pair of Large Japanese Lacquered Porcelain Vases.
Meiji Period.
{Height: 30 1/2 inches (77.5 cm)}.

Estimate:
\$1,000 / \$1,200



567
Japanese Four Panel Painted Screen.
{52 3/4 x 78 inches (134 x 198 cm)}.

Estimate:
\$800 / \$1,200



564
Unidentified Artist: Nine Japanese Paintings.
Possibly 17th Century.
Mounted as handscroll, ink and color on paper, each with seal, and two colophons.
{Each Painting: 9 1/2 x 14 1/2 inches (24 x 36.8 cm)}.
[Extensive creasing, paper losses, fading and toning].

Estimate:
\$300 / \$500



568
Japanese Painted Paper Two-Panel Folding Screen.
Early 20th Century.
{67 x 74 inches (170.2 x 188)}.
[Restorations, losses].

Estimate:
\$800 / \$1,200



565
Four Japanese Woodblock Prints.
Including a triptych by UTAGAWA YOSHIKAZU "Parade of Yokahama's Foreigners"; a modern woodblock by HODAKA YOSHIDA "Old City Stepping Stones"; and two woodblock prints by unidentified artists; all framed and glazed.
{Largest Frame: 19 1/4 x 35 inches (49 x 89 cm); Prints: 14 x 9 1/2 inches (35.6 x 24 cm)}.

Estimate:
\$400 / \$600



569
Japanese Wood Lacquer Traveling Shrine, Zushi.
Late Edo / Meiji Period.
{Height: 17 inches (43.2 cm)}.

Estimate:
\$750 / \$1,000



570
Korean Elmwood and Pearwood Chest on Stand with Brass Fixtures .
{60 x 40 x 17 inches (152.4 x 101.6 x 43.2 cm)}.

Estimate:
\$400 / \$600

Artist Index

Artist	Lot #	Artist	Lot #
Adams, Norman	190	Kandinsky, Wassily (after)	188
Alexander, Peter	230	Keith, William	154, 157
American School	165, 201	Lane, Martella Cone	164
Appel, Karl	236	Lester, Leonard	159
Avery, Milton	228	Lipofsky, Marvin	203, 208
Bigler, Steven	197	Malley, Frederick James	170
Blackman, William	169	Miro, Joan	187
Bonheur, Isidore Jules (after)	149	Mizuno, Hiroshi (attributed To)	179
Bradbury, Bennett	173	Moreau, Max Leon	142
Brock, Emily	196	Morris, Carl	225
Brown, John George	160	Musante, Ed	209
Calder, Alexander	239	Negulesco, Jean	240
California School	156	Neiman, Leroy	232, 244, 245
Camp, Daniel	200	Neumann, Hans	144
Canevari, Carlo	181	Noda, Tetsuya	176, 177, 178
Chihuly, Dale	202	Patrick, James McIntosh	147, 145, 151
Connor, Linda	214	Peek, Stephanie	224
Copnall, John	185	Penck, A.r.	184
Cortes, Edouard Leon (style Of)	148	Pierre, Fernand	175
Couffignal, Guillaume	183	Pott, Laslett	167
Curtis, Christopher Charles	204	Reneson, Chet	247
Dakin, William Norris (attributed To)	238	Reynolds, Joshua (after)	143
Dali, Salvador	186, 189	Reynolds, Wade	242
De Lempicka, Tamara (after)	192	Rockwell, Norman (after)	233
De Ruth, Jan	235, 243, 246	Rohal, Jim	211
Dine, Jim	237, 241	Ruhtenberg, Cornelis	227
Dunne, Jessica	218	Ryan, Richard	199
European School	153	Sánchez- Cortés, Eduardo Alvarado	191
Fratin, Christophe (after)	150	Sartelle, Herbert	155
Frohsin, Kim	195, 217, 220, 223	Schlaus, Norbert	234, 248, 249
Gambino, Giuseppe	180	Scott, Adam Sherriff	158, 161
Gauguin, Paul (after)	152	Sexton, Randall	221
Genn, Nancy	205	Shaw, Richard Blake	207
Godwin, Harrison	172	Sommers, Kreszenz (cynthia) Guzevich	174
Greene, Herb	229, 231	Stern, Yossi	193
Hafley, Bruce	219	Sueda, Kelly	222
Hawks, Aaron	213	Temple, Brook	212
Heath, Frank Lucien (attributed To)	162	Thomas, Alain	182
Hendriks Jr, Willem	141	Van Dongen, Ron	194
Jackson, Raymond	210	Vavgiakis, Costa	198
Jacobsen, Antonio	166	Von Luerzer, Feodor	146
Jansen, Leo	168, 171	Weiner, Sam	226
Jarvis, John Wesley (attributed To)	163	Wynne, Jessica	216
Jed Devine And Joel Leivick	215	Zajac, Jack	206

Michaan's Auctions - Terms and Conditions of Sale

STANDARD CONDITIONS OF SALE

These Conditions of Sale are binding on all purchasers at Auction. Please read carefully.

By registering to bid at auction, in person, or through an agent, by absentee bid, or telephone or any other means including the Internet and e-mail, you agree to be bound by these Conditions of Sale (and changes made as noted below.) All property and every lot for sale in our catalogue is offered subject to the following terms and conditions, along with any changes that may be published or announced prior to or during a sale by Michaan's Auctions. (MA). The terms "MA" "us," "we," or "our" as used herein all refer to Michaan's Auctions. Unless otherwise indicated in the catalogue or at time of sale, MA acts at all times solely as the agent for the seller. All sales shall be deemed to occur in California regardless whether by telephone, mail or through the Internet or the physical location of the buyer.

DEFINITIONS

Hammer price: The highest bid received for a lot upon the fall of the auctioneer's hammer.

Buyer's premium: The amount paid by the buyer as a percentage of the hammer price and in addition thereto.

Purchase price: The aggregate of the hammer, buyer's premium and applicable taxes or other fees, if any, as may be required by law.

Reserve: The minimum price at which the lot may be sold.

Buyer: The person or entity who buys property at auction or private sale.

Consignor: The seller, or the seller's representative, on behalf of whom we are selling the Property.

Lot: The single item or group of items offered by us for sale. Property: The item or items comprising an auction lot being offered for sale.

BUYER'S PREMIUM

The Buyer shall pay a Buyer's Premium per lot which shall be retained by MA as follows:

Twenty percent (20%) of the first \$250,000.00 of the bid price, fourteen percent (14%) of the amount of the bid price above \$250,000.00 up to and including \$1,000,000.00, and twelve percent (12%) of the amount of the bid price over \$1,000,000.00. If you choose to pay by credit card (Visa, Mastercard or Discover only) or any other form of payment, the buyer's premium is twenty-three percent (23%) of the first \$250,000.00 of the bid price, seventeen percent (17%) of the amount of the bid price above \$250,000.00 up to and including \$1,000,000.00, and fourteen percent (14%) of the amount of the bid price over \$1,000,000.00. Internet Buyer's Premium is twenty-seven percent (27%) of the first \$250,000.00 of the bid price and twenty-two percent (22%) of the amount of the bid price over \$250,000.00.

TERMS OF SALE

a. The Purchase of and Payment for Property

The sale of a lot shall be to the highest bidder as determined by the auctioneer, in accord with these Conditions of Sale. Title to the lot shall pass with the fall of the Auctioneer's hammer. Buyer shall pay the Purchase price, as defined above, and such other fees as may be due, in full, within seven (7) days of the auction sale. Sale is not final and property will not be released to Buyer until good funds for all amounts due, are received by MA. Payment may be made (i) in cash, (ii) by wire transfer (additional \$25 fee), (iii) by money order or other guaranteed funds, or (iv) by personal check (when buyer's credit is approved). No lot shall be transferred by Buyer to another person until the sale is final. In the event of partial payment for any lot or lots we shall apply payments, in our discretion, to the lot or lots we select. The Buyer grants MA a security interest in the purchased Property, and we may retain as collateral any property purchased and any funds in our possession, to secure a

Buyer's obligations to us, if any. We retain the rights of a secured party under the California Commercial Code. All fees, taxes, premiums or other sums due and not paid pursuant to this paragraph shall bear interest at 1.5 % per month from the 8th day following the sale to the date paid in full.

b. Collection of Property

Upon transfer of title, Buyer assumes full responsibility, including risk of loss and damage, for the Property. Purchased property shall be removed at Buyer's expense within fifteen (15) days after the sale becomes final. Property not removed shall be subject to a service fee of \$50, and a storage fee, if retained by MA, of 1% of the purchase price per month. MA may also, in its sole discretion, elect to place the Property in a public storage facility at the Buyer's sole risk, responsibility and expense.

c. Liability for delivery of property

If, for any reason whatsoever, we are unable to deliver the purchased Property to the Buyer, MA shall be liable to the Buyer only for the Purchase price paid by the Buyer and in no event shall we be liable for incidental or consequential damages, including, but not limited to, business interruption or loss of profit.

THE AUCTION PROCEDURE

a. Registration

Bidders must register in advance to bid at auction. (a) If by mail or on the Internet please comply with, sign and send back the requisite form or absentee bid. (b) To telephone bid, Bidders must complete, sign and fax a copy of the Telephone Bid Registration Form, which is available only by calling MA. Telephone lines are limited, and available on a first-come, first-serve basis. Registration to bid by telephone must be completed by 5 p.m. the day prior to the auction. (c) When intending to bid in person, pre register at the desk and obtain a bidding paddle. The auctioneer may refuse to recognize any person not registered and not having a paddle number. MA reserves the right at its sole discretion, to refuse anyone the right to register and participate at an auction.

b. Announcements
We may, at the commencement of, or during the Auction, announce changes in or modifications to the Conditions of Sale or descriptions of Property.

c. Absentee Bids

For a Buyer's convenience, absentee bids will be accepted, when properly executed and submitted in a timely manner. However, we neither accept any responsibility to an absentee bidder, nor any liability whatsoever for a failure to execute the absentee bid for any reason. In the event that identical multiple absentee bids are the highest bids received for the same lot then the earliest received of the competing absentee bids shall prevail at that bid amount.

d. Auctioneer's Discretion

The Auctioneer has the absolute discretion to 1) pass a lot or withdraw it from sale at any time prior to its actual sale; 2) refuse to recognize any bidder; 3) refuse to recognize any bid; 4) resolve any dispute between bidders or resolve any doubtful bid by deciding who is the successful bidder or nullifying the auction of the lot and reoffering it for sale. The Auctioneer's decision is binding as to disputes arising at auction. If a dispute arises post sale, our records of the sale shall be conclusive. Both the Auctioneer and MA shall be without any liability whatsoever resulting from the exercise of the discretion referred to herein.

e. Reserves

All Property is offered for sale subject to a Reserve unless otherwise stated by us at time of sale. MA may protect the Reserve by an initial bid or continued bidding on behalf of the consignor. Any bids by MA staff after the Reserve is met shall be made only on behalf of registered bidders. Neither the consignor nor an agent or representative of the consignor is allowed to bid on their own property.

DISCLAIMER OF WARRANTIES

Except for warranty of title, neither we nor the Consignor make any warranties, guarantees or representation, express or implied, with respect to the Property, including, but not necessarily limited to, any implied warranty of "fitness for purpose" or "merchantability." Any and all statements and descriptions in any catalogue or elsewhere by MA, relating to age, attribution, authenticity, size, genuineness, provenance, historical relevance or significance, physical condition, importance, quality, quantity, rarity, period, culture, source or origin, are presented as statements of qualified opinion only. MA's disclaimer of liability covers information contained in catalogues, and all other printed material published by us, including condition reports. Buyers assume the responsibility to inspect the Property and make their own decision as to the nature, quality and value of the Property. Neither MA nor the Consignor make any warranty or representation with regard to the existence of or the transfer of intellectual property rights, except and to such extent as may, from time to time, be explicitly stated. No employee of MA is authorized to nor shall make any warranty or representation on MA's behalf, except as stated in the catalog or in any written addendum.

ESTIMATES OF VALUE

All estimates of value as published in our Catalogues or elsewhere are statements of qualified opinion as to the range of the price a willing buyer might pay for the Property at auction. The actual price paid at auction or subsequently, may vary substantially from the estimates. MA shall not be liable for any such differential.

BUYER'S DEFAULT

If a Buyer fails to pay for purchased Property, or otherwise does not comply with these Conditions of Sale, the Buyer shall be in default. In addition to all remedies available in law, to MA and to the Consignor, the Buyer shall be liable for the entire Purchase price. Additionally, at our option, we may either cancel the sale and retain all payments made by Buyer as well as retain any and all Property of Buyer in our possession as security against payment of the sums in default, or we may re-offer the Property for sale, at auction or privately, without reserve. Buyer shall be liable to us and the Consignor for the additional fees, commissions and costs on both sales (including handling, storage and court costs and attorney's fees) resulting from the cancellation or resale of the Property and in the event of resale, any deficiency which may result.

RESCISSION

The sole and exclusive remedy, available only to the original buyer, is the limited right of rescission set forth herein. MA will cancel the sale of Property if the original buyer establishes to our satisfaction that there has been a breach of the Consignor's warranty of title, or that the identification of Authorship* of the Property as set forth in **Bold** Type Heading is not substantially correct, based on a fair reading of the Catalogue (as may be amended by posted or announced changes.) **IN ALL INSTANCES, YOU MUST GIVE WRITTEN NOTICE TO US WITHIN 30 DAYS OF THE SALE OF THE PROPERTY, SETTING FORTH THE BASIS FOR YOUR CLAIM AND, AT YOUR SOLE EXPENSE AND RISK, RETURN THE PROPERTY IN QUESTION TO MA WITHIN SEVEN (7) DAYS AFTER NOTICE IS GIVEN AND IN THE SAME CONDITION AS WHEN SOLD.** Upon review of the claim and the property, if we are satisfied with the bases for your claim and the property is in the same condition it was in when sold, MA will rescind the sale and return to you the Purchase price, unless we have already remitted funds to the Consignor. In that event, and at MA's sole discretion, MA shall either pay you as provided above, or shall pay you only

that portion of the Purchase price retained by us (the Seller's commission, the buyer's premium and any sales taxes collected) and on your behalf make demand on the Consignor for the balance and upon receipt of the funds remit same to you. Should the Consignor refuse to return the funds to you or to MA, we shall disclose the Consignor's identity and assign to you any and all rights MA may have against the Consignor. Any and all liability MA may have as agent for the Consignor shall thereupon terminate.

BUYER EXPRESSLY UNDERSTANDS AND AGREES THAT MA SHALL HAVE NO OTHER LIABILITY TO THE BUYER EXCEPT FOR THE RETURN OF THE PURCHASE PRICE AND THAT IN NO EVENT SHALL MA BE LIABLE FOR ANY DAMAGES, INCLUDING BUT NOT LIMITED TO INCIDENTAL, CONSEQUENTIAL OR COMPENSATORY DAMAGES OR LOSS OF PROFIT OR BUSINESS OPPORTUNITY.

*Authorship refers to the maker or creator of the Property, and the period, social culture, and origin of the Property as stated in the **Bold** Type Heading for a given lot in our catalogue. It does not refer to the descriptions which may be contained in the information below the **Bold** Type Heading.

MISCELLANEOUS

a. Modification: No modification or amendment of the Conditions of Sale shall bind MA unless contained in a writing signed by MA, except as may be posted or published as noted above or verbally announced at time of sale.

b. Severability: If, for any reason, any part of the Conditions of Sale is held to be invalid or unenforceable, the remaining portion shall be valid and enforceable.

c. Successors and Assigns: The Conditions of Sale shall be binding on all the heirs and assigns of the Buyers and bidders and inure to the benefit of MA's successors and assigns.

d. Jurisdiction, Venue, Choice of Law: Dispute resolution shall occur in Alameda County, California, USA. The provisions of the Conditions of Sale will be construed and disputes determined by application of California Law, without regard to conflicts of law.

e. Notice, Service of Process: Buyers agree to accept all notices and service of process relating to dispute resolution at the address provided by Buyer on any registration forms required to be executed as a condition of bidding in our auction.

f. Dispute Resolution: All disputes and claims arising out of or relating to events and actions covered herein, brought by or against us, shall be resolved by mediation or binding arbitration in accord with the procedures set forth below. This provision does not apply to claims brought by the Buyer directly against the Consignor, including, but not limited to any action brought pursuant to the rescission provisions noted above.

OPTIONAL PROVISIONS

Shipping, insurance packaging and handling of purchased lots is at the risk and expense of the purchaser. MA shall not, under any circumstances, be liable for the loss, theft or damage to property, including, but not limited to selection of shipper, the acts or omissions of any shipper or the acts or omissions occurring in packing for shipment. It is the purchaser's responsibility to obtain a shipping quote for any lot being offered, from an outside shipper, prior to the auction date. Post sale determination of shipping costs does not constitute grounds for cancellation of any purchase made at auction. Purchasers are advised that large and fragile items can be expensive.

MEDIATION AND ARBITRATION PROCEDURES

(a) Within 30 days of written notice that there is a dispute, the parties or their representatives may meet at a time and place mutually agreed upon, to mediate their differences. If the parties agree, a mediator acceptable to the parties shall be selected. The mediator shall be

an attorney, trained in mediation techniques and familiar with commercial law and the California Uniform Commercial Code (UCC). The mediator's fees shall be shared equally and paid by all parties. At the mediation, all parties shall have actual authority to settle the dispute. Any statements made during, and all aspects of, the mediation process shall be kept confidential and shall not be admissible in any subsequent arbitration or judicial proceeding. Any resolution shall be confidential. (b) If the parties cannot agree to mediation, or if mediation does not resolve the dispute, or in any event no longer than 60 days after receipt of written notice referred to above, the parties shall submit the dispute for binding arbitration before a single neutral arbitrator jointly selected, or absent agreement, selected from the panel of Arbitrators provided by the American Arbitration Association (AAA). If, within 15 days, the parties cannot agree on an arbitrator, then AAA shall select one (1) person as arbitrator in accord with AAA rules. The arbitrator shall be an attorney, experienced in commercial law and with the UCC. The arbitrator shall be required to follow the law in making his award, and the award shall be in writing and shall set forth findings of fact and legal conclusions. (c) The arbitration shall occur within 60 days of the selection of the arbitrator, in either Oakland or San Francisco, California, unless the parties agree to another location. Discovery and the procedure for the Arbitration shall, unless otherwise agreed to by the parties, follow the procedures and policies of AAA governing commercial arbitration, subject however to the following modifications:

1. All arbitration proceedings shall be confidential. None of the parties nor the arbitrator, may disclose the existence, content or results of the arbitration without the written consent of all parties.
2. The parties shall attempt to agree on the issues to be arbitrated, or identify the disputed issues in writing no later than 45 days prior to arbitration.
3. Unless otherwise agreed by the parties, discovery, if any, shall be limited as follows: (a) Requests for no more than 10 clearly identified categories of documents, to be provided to the requesting party within 14 days of written request therefore; (b) Depositions: No more than two (2) per party, provided however, the deposition(s) are to be completed within one (1) day; (c) Compliance with the above shall be enforced by the arbitrator in accord with California law.
4. Each party shall have no longer than eight (8) hours to present its position. The entire hearing before the arbitrator shall not take longer than three (3) consecutive days, unless all parties agree otherwise in writing. The award shall be made in writing no more than 30 days following the end of the proceeding. Judgment upon the award rendered by the arbitrator may be entered by any court having jurisdiction thereof. Each party shall bear its own attorney's fees and costs in connection with the proceedings and shall share equally the fees and expenses of the arbitrator.

This auction is being conducted in compliance with section 2328 of the Commercial Code, section 535 of the Penal Code, and provisions of the California Civil Code.

Bonded pursuant to California Civil Code sec 1812.600 et seq. Bond # 71393954

JEWELRY SOLD AT MICHAAN'S AUCTIONS:

It is the responsibility of the bidder to examine carefully any item(s) of potential interest.

For all the jewelry sold here at Michaan's Auctions the following applies:

All gemstone weights are approximate.

We are aware of the many types of treatments and/or enhancements used today on diamonds and colored stones. The purpose is to improve their appearance i.e. color and/or clarity. Techniques like heat treatments, color diffusion, irradiated, HTHP, oiling, resin, bleaching,

dying and impregnation are just a few techniques known today. Some treatments combined. Some treatments are not detectable using standard gemological procedures. Not all treatments are permanent. Prospective buyers are therefore reminded that unless otherwise noted in the description(s), it must be assumed that some form of enhancement may have been used.

Regarding laboratories certification: The certifications mentioned in the descriptions only reflect the opinions of the laboratory. From one laboratory to another they do differ on the degrees of grading and/or treatments. And if a stone has a certificate from a laboratory we cannot guarantee this grading.

Watches must be examined carefully. Although we do attempt to mention in our descriptions significant defects, needed repairs, absent stones and the like, we do not guarantee the accuracy or operation of any watch function.

Detailed condition reports are available for most pieces. These reports contain more information than the catalogue descriptions. Images shown may appear smaller or larger than actual size.

ASIAN ARTS DISCLAIMER:

We are aware of the many types of treatments and/or enhancements used today on jade. The purpose is to improve their appearance, i.e. color and/or clarity. Techniques like bleaching, dying and impregnation are just a few techniques known today. These treatments are not detectable using standard gemological procedures. Not all are permanent. Prospective buyers are therefore reminded that unless otherwise noted in the description(s),¹ it must be assumed that some form of enhancement may have been used.

¹ Accompanied by a laboratory report stating natural, no evidence of treatment.

PROPERTY MADE FROM OR CONTAINING MATERIALS FROM ENDANGERED OR PROTECTED SPECIES

Property that contains any percentage of material made or potentially made from endangered and/or other protected species of wildlife are, as a courtesy, marked in the catalogue with the symbol " * ". Michaan's Auctions does not accept any responsibility or liability for failing to mark such lots. Such material includes, but is not limited to, ivory, tortoise shell, crocodile skin, whalebone, rhinoceros horn, some species of coral and certain woods.

Prospective buyers are advised that several countries completely prohibit importation of property made, all or in part, of proscribed materials. Some countries require special permits, such as a CITES permit, from the relevant regulating authority in the countries of exportation and importation as well. Potential buyers intending to import the property into another country should be familiar with the relevant customs laws and regulations prior to bidding on property containing wildlife material. Regulations may vary as the U.S. prohibits importation of articles containing material(s) from species it has designated endangered or threatened if the articles are less than 100 years old.

It shall be the potential buyer's sole responsibility to research and satisfy the requirements of any laws and regulations that apply to the import and export of property as described in the aforementioned paragraphs. Prospective buyers must also note that the inability or delay in obtaining permits, licenses or other permissions to import or export property containing potentially regulated wildlife material will not constitute a basis for rescission or cancellation of the sale of said property or the delay in payment of purchased items in accordance with the Conditions of Sale.

NO GUARANTEE OF AUTHENTICITY FOR CHINESE PAINTINGS

Currently, scholarship in the field of Chinese paintings precludes the ability to provide unqualified statements or opinions as to Authorship or date of execution. The terms for RESCISSION in the Conditions of Sale, (as set out on our internet site and in our catalogues) does not apply to Chinese paintings. However, if within twenty (20) days of the sale of any such lot, the original purchaser provides Michaan's with both written notice that the lot is a forgery, and within seven (7) days after written notice, said purchaser returns the lot to us in the same condition as when sold and demonstrates to our satisfaction that the lot is a forgery, Michaan's will rescind the sale and refund the purchase price received to the original purchaser. "Forgery" for the purposes of this provision, is defined as a work created with the intent to deceive.

Definitions of Authorship:

This is to qualify the relationship between the object and the named person in the catalogue. The following conventions for attribution are used by Michaan's Auctions:

Giovanni Bellini: In our opinion a work by the artist. When the artist's forename(s) is not known, a series of asterisks, followed by the surname of the artist, whether preceded by an initial or not, indicates that in our opinion the work is by the artists named.

Attributed to Giovanni Bellini: In our opinion probably a work by the artist but less certainty as to authorship is expressed than in the preceding category.

Studio of Giovanni Bellini: In our opinion a work by an unknown hand in the studio of the artist, which may or may not have been executed under the artist's direction.

Circle of Giovanni Bellini: In our opinion a work by an as yet unidentified by distinct hand, closely associated with the named artist but not necessarily his pupil.

Style of; follower of Giovanni Bellini: In our opinion a work by a painter working in the artist's style, contemporary or near contemporary, but not necessarily his pupil.

Manner of Giovanni Bellini: In our opinion a work in the style of the artist and of a later date.

after Giovanni Bellini: In our opinion a copy of a known work of the artist.

The term **signed** and/or **dated** and/or **inscribed** means that in our opinion the signature and/or date and/or inscription are from the hand of the artist.

The term **bears a signature** and/or **date** and/or **inscription** means that in our opinion the signature and/or date and/or inscription have been added by another hand.

"bearing signature..." / "bearing date..." / "bearing inscription..." In our opinion the signature/date/inscription is by a hand other than that of the artist.

Typical Headings:

FURNITURE

George III Mahogany Chest of Drawers

Third Quarter 18th Century

This heading, with date included, means that the piece is, in our opinion, of the period indicated with no major alterations or restorations.

George III Mahogany Chest of Drawers

This heading, without the inclusion of the date, indicates that, in our opinion, the piece, while basically of the period, has undergone significant restoration and alteration.

George III Style Mahogany Chest of Drawers

The inclusion of the word "style" in the heading indicates that, in our opinion, the piece was made as an intentional reproduction of an earlier style.

BRONZES

Antoine-Louis Barye

This heading indicates that the casting and patination were done by the artist or with his direct authorization or supervision.

Cast After a Model by Antoine-Louis Barye

This heading indicates that the casting and patination of a known Barye model were done by another, i.e., artisans at the F. Barbedienne or other foundry.

CERAMICS

Meissen Porcelain Cup and Saucer

Late 19th Century

This states that the cup and saucer were made at the Meissen factory in the last quarter of the 19th Century.

Meissen Porcelain Cup and a Saucer

Late 19th Century

Again, this states that the cup and saucer were made at the Meissen factory in the last quarter of the 19th Century, but it also indicates that the cup and saucer may not have been "born" together.

Meissen Porcelain Cup and Saucer

Circa 1900

This states that the cup and saucer are of Meissen style, and although of the date specified, not necessarily made at the Meissen factory.

'Meissen' Porcelain Cup and a Saucer

19th Century

This states that the cup and saucer are of Meissen style, and although of the date specified, not necessarily made at the Meissen factory.

Meissen Porcelain Cup and Saucer

The title without a specific date simply states that the pieces were made at the Meissen factory but does not specify when, implying that their age is questionable.

Bid Increments

Minimum Value	Maximum Value	Expected Bid Increment
from US \$ 0	to US \$ 49	US \$ 5
from US \$ 50	to US \$ 199	US \$ 10
from US \$ 200	to US \$ 499	US \$ 25
from US \$ 500	to US \$ 999	US \$ 50
from US \$ 1,000	to US \$ 1,999	US \$ 100
from US \$ 2,000	to US \$ 4,999	US \$ 250
from US \$ 5,000	to US \$ 9,999	US \$ 500
from US \$ 10,000	to US \$ 19,999	US \$ 1,000
from US \$ 20,000	and above	US \$ 2,500



Michaan's Auctions

2751 Todd Street
Alameda, CA 94501
(800) 380-9822
or (510) 740-0220
www.michaans.com
info@michaans.com