

---

# MICHAAN'S AUCTIONS

---

Auctioneers & Appraisers



**Gallery Auction**  
**February 8, 2020**  
**10am**



# Gallery Auction

---

*featuring fine art, furniture,  
decorative arts, Asian art &  
jewelry*

**Saturday, February 8, 2020  
10am**

## Previews

Sunday, February 2, 9am to 5pm

Friday, February 7, 12pm to 5pm

Saturday, February 8, 9am to end of auction

---

Automobiles: Lot 1 - 2

Collectibles: 2A - 2B

Decorative Arts, Furniture & Couture: Lots 3 - 159

Fine Art: Lots 166 - 230

Jewelry and Timepieces: Lots 236 - 358

Stamps and Coins: Lots 361 - 370

Asian Works of Art: Lots 376 - 545

---

## Copyright Notice

No part of this catalog may be reproduced, stored in a retrieval system or transmitted by any form or by any means, electronic, mechanical, photocopying, recording or otherwise, without the prior written permission of Michaan's Auctions.

Michaan's Auctions bond # 71393954

---

Front cover: Lot 47, 540, 236, 215

Back cover: Lot 143

## Michaan's Auctions

2751 Todd Street

Alameda, CA 94501

Phone: (800)380-9822 or

(510) 740-0220

Fax: (510) 749-7517

**www.michaans.com**

info@michaans.com

## Inquiries

### Automobiles

Desman Coronado

(510) 227-2515

desman@michaans.com

### Asian Art

Annie Zeng

(510) 227-2536

annie@michaans.com

### Coins, Stamps & Ephemera

Michael Rosenberg

(510) 227-2502

mrosenberg@michaans.com

### Collectibles & Ephemera

Daniel Elizalde

(510) 227-2510

daniel@michaans.com

### Fine Art

Kyrah Leal

(510) 227-2519

kyrah@michaans.com

### Furniture & Decorative Arts

Jill Fenichell

(510) 227-2524

jill@michaans.com

### Jewelry

Elise Coronado

(510) 227-2570

elise@michaans.com

---

View this catalog, additional photos and condition reports online at [www.michaans.com](http://www.michaans.com).

Photography by Jeffrey Lee and James Strowe



**1**  
**1986 Alfa Romeo Spider**  
 2 door Veloce convertible; vin: B341802285G; cal: 1PFH461; odometer indicates 54,819 miles; spark-ignition 4-stroke 2.0L L4 SOHC 8V engine; 5 speed manual; RWD; 12.2 U.S. gal fuel tank; 19 mpg city; 26 mpg highway; am/fm radio; single disc player; black interior; leather seats; slight wear on inside that befits a vehicle of this age; overall interior in good condition; Alpha red exterior; original Campagnolo 5 star wheels; garage kept; exterior in great condition; includes original Spider service manual, Alfa Romeo cable key chain, front and rear Alfa Romeo badges, and a spare Alfa Romeo blank spare key. Buyer is responsible for all fees and taxes including but not limited to smog, sales tax and registration.

**Estimate:**  
**\$12,000 / \$14,000**



**2**  
**1930 Ford Model A**  
 2-door coupe; vin: A3016683; cal: B195C0; Offenhauser engine; rear wheel drive; ignition/start switch; stainless steel headlights; new parts added to vehicle; lots of work put into this car; additional work needed; vehicle is not in running condition; information and records of work completed included; various vehicle parts also included. Buyer is responsible for all fees and taxes including but not limited to smog, sales tax and registration.

**Estimate:**  
**\$8,000 / \$10,000**



**2A**  
**1950's Mobil Oil Coin-Operated Children's Pegasus Ride,**  
 Exhibit Supply Company for use at a world's fair. "Ride The Flying Red Horse". Model No. 1. {Approximate dimensions, 63 x 66 x 61 inches}.

**Estimate:**  
**\$10,000 / \$15,000**



**2B**  
**Brown and White Carousel Horse.**  
 Composite body, on stand. {Dimensions of horse without stand approximately 38 x 68 x 16 inches}. [Condition: Horse has stains, scratches and chipped paint].

**Estimate:**  
**\$300 / \$500**



**3**  
**Persian Tabriz Style Wool Rug.**  
 Central blue medallion on a cream ground in a red surround, with a dark blue main border, stylized floral motif throughout. {Approximate dimensions: 11 feet 6 inches x 8 feet 5 inches.}. Condition: Some warping and fraying to the edges, a few light brown stains to the cream ground.

**Estimate:**  
**\$400 / \$600**



**4**  
**Large Persian Wool Carpet.**  
 Floral motif in blue, pink, and green on a cream ground; with a foliate pattern blue, pink, and green border. {Approximate dimensions: 19 feet 10 inches x 11 feet 7 inches.}. Condition: Minor fraying to the edge, several worn spots mainly to the middle.

**Estimate:**  
**\$400 / \$600**



**5**  
**Persian Carpet.**  
 Foliate motif on a gray/beige ground, with a red foliate main border. {Approximate dimensions: 14 high x 10 feet 3 inches.}. Condition: Please contact gabe@michaans.com for condition information.

**Estimate:**  
**\$700 / \$900**



**6**  
**Persian Wool Carpet.**  
 Foliate motif on a beige ground. {Approximate dimensions: 9 feet 9 inches x 13 feet 7 inches.}. Condition: Please contact gabe@michaans.com for condition information.

**Estimate:**  
**\$400 / \$600**



7  
**Persian Kashan Carpet.**  
 Foliate motif on a red ground with a dark blue main border.  
 {Approximate dimensions: 9 feet 11 inches x 14 feet 3 inches.}.  
 Condition: Please contact gabe@michaans.com for condition information.

**Estimate:**  
**\$350 / \$500**



12  
**Persian Wool Rug.**  
 Foliate motif on a beige ground with a pink main border.  
 {Approximate dimensions: 7 feet 10 inches x 9 feet 10 inches.}.  
 Condition: Please contact gabe@michaans.com for condition information.

**Estimate:**  
**\$300 / \$400**



8  
**Persian Agra Carpet.**  
 Foliate motif on a cream ground.  
 {Approximate dimensions: 9 feet 8 inches x 13 feet 11 inches.}.  
 Condition: Please contact gabe@michaans.com for condition information.

**Estimate:**  
**\$400 / \$500**



13  
**Chinese Savanory Wool Carpet.**  
 Multi-medallion motif on a dark green ground with a cream main border.  
 {Approximate dimensions: 8 feet x 10 feet.}.  
 Condition: Please contact gabe@michaans.com for condition information.

**Estimate:**  
**\$300 / \$400**



9  
**Persian Sultanabad Wool Carpet.**  
 Foliate motif on a red ground, with a green main border and beige/cream inner and outer borders.  
 {Approximate dimensions: 14 feet 5 inches x 9 feet 10 inches.}.  
 Condition: Possible fading to color, overall washed out appearance. Slight fraying to the edges.

**Estimate:**  
**\$400 / \$500**



14  
**Black Mink Coat with Belt.**  
 With collar, single interior pocket. 'Jean S. Carpenter' embroidered to the interior. 'The Room' embroidered label.  
 {Approximate dimensions: Size 12, 50 inches long.}.  
 Condition: Very light wear to exterior, interior lining is separated in some areas.

**Estimate:**  
**\$400 / \$500**



10  
**Romanian Bidjar Wool Carpet.**  
 Geometric foliate motif on a dark blue ground with a cream main border.  
 {Approximate dimensions: 8 feet 10 inches x 12 feet 4 inches.}.  
 Condition: Please contact gabe@michaans.com for condition information.

**Estimate:**  
**\$300 / \$400**



15  
**Ghiordes Prayer Rug.**  
 Tree of life motif on a cream ground with a dark blue foliate motif border.  
 {Approximate dimensions: 5 feet x 3 feet 4 inches.}.  
 Condition: Significant loss to fringe. Color has an overall darkened appearance which would likely be solved with a cleaning.

**Estimate:**  
**\$300 / \$400**



11  
**Nepalese Wool Carpet.**  
 Blank blue/gray ground with a pink main border with sparse leaf decoration.  
 {Approximate dimensions: 8 feet 5 inches x 11 feet 4 inches.}.  
 Condition: Please contact gabe@michaans.com for condition information.

**Estimate:**  
**\$300 / \$400**



16  
**Persian Wool Rug.**  
 Central blue medallion on a red ground with blue spandrels, and a brown main border, with a stylized floral motif throughout.  
 {Approximate dimensions: 7 feet 10 inches x 5 feet 5 inches.}.  
 Condition: Fading to the color, some fraying to the edges. Loss to the fringe.

**Estimate:**  
**\$300 / \$400**



17  
**Kilim Rug.**  
Diamond pattern in red, blue, orange, white, yellow, and brown. {Approximate dimensions: 9 feet 2 inches x 5 feet 4 inches.} Condition: Very small crusted stain, very good condition overall.

**Estimate:**  
**\$400 / \$600**



22  
**Romanian Serapi Style Wool Carpet.**  
{Approximate dimensions: 9 feet x 12 feet.} Condition: Please contact gabe@michaans.com for condition information.

**Estimate:**  
**\$500 / \$600**



18  
**Persian Tribal Wool Runner.**  
Polychrome multi-medallion motif on a dark blue ground, with a cream main border, geometric motif throughout. {Approximate dimensions: 12 feet x 3 feet 7 inches.} Condition: Some warping to the ends and edges. Minor fraying to the edges.

**Estimate:**  
**\$500 / \$800**



23  
**Turkish Topkapi Style Wool Carpet.**  
{Approximate dimensions: 9 feet x 11 feet 8 inches.} Condition: Please contact gabe@michaans.com for condition information.

**Estimate:**  
**\$600 / \$700**



19  
**Persian Style Wool Rug.**  
Central red medallion in a larger light blue medallion on a red ground with white spandrels, dark blue main border with multi-tiered white inner and outer borders, dense stylized floral motif throughout. {Approximate dimensions: 10 feet 3 inches x 8 feet.} Condition: Some fraying to the edges.

**Estimate:**  
**\$300 / \$400**



24  
**Indian Serapi Style Wool Carpet.**  
{Approximate dimensions: 9 feet x 12 feet 8 inches.} Condition: Please contact gabe@michaans.com for condition information.

**Estimate:**  
**\$400 / \$500**



20  
**Wool Area Rug.**  
Central medallion on a cream ground in a red surround, with a dark blue main border, foliate motif throughout. {Approximate dimensions: 13 feet x 9 feet.} Condition: Light brown stain to the border.

**Estimate:**  
**\$300 / \$400**



25  
**Indian Tabriz Style Wool Carpet.**  
{Approximate dimensions: 8 feet 11 inches x 12 feet 2 inches.} Condition: Please contact gabe@michaans.com for condition information.

**Estimate:**  
**\$400 / \$500**



21  
**Indian Tabriz Style Wool Carpet.**  
{Approximate dimensions: 9 feet 5 inches x 12 feet 8 inches.} Condition: Please contact gabe@michaans.com for condition information.

**Estimate:**  
**\$400 / \$500**



26  
**Romanian Hamadan Style Wool Carpet.**  
{Approximate dimensions: 9 feet x 12 feet 3 inches.} Condition: Please contact gabe@michaans.com for condition information.

**Estimate:**  
**\$500 / \$600**



27  
**Indian Adeline Style Wool Carpet.**  
{Approximate dimensions: 8 feet 6 inches x 12 feet 1 inch.}.  
Condition: Please contact gabe@michaans.com for condition information.

**Estimate:**  
**\$450 / \$550**



32  
**Indian Tabriz Style Wool Carpet.**  
{Approximate dimensions: 9 feet 8 inches x 13 feet 1 inch.}.  
Condition: Please contact gabe@michaans.com for condition information.

**Estimate:**  
**\$500 / \$600**



28  
**Indian Kerman Style Wool Carpet.**  
{Approximate dimensions: 8 feet 10 inches x 11 feet 9 inches.}.  
Condition: Please contact gabe@michaans.com for condition information.

**Estimate:**  
**\$450 / \$550**



33  
**Romanian Bucaresti Style Wool Carpet.**  
{Approximate dimensions: 9 feet 8 inches x 9 feet 10 inches.}.  
Condition: Please contact gabe@michaans.com for condition information.

**Estimate:**  
**\$450 / \$550**



29  
**Indian Bidjar Style Wool Carpet.**  
{Approximate dimensions: 9 feet 1 inch x 11 feet 10 inches.}.  
Condition: Please contact gabe@michaans.com for condition information.

**Estimate:**  
**\$650 / \$750**



34  
**Indian Mahal Style Wool Carpet.**  
{Approximate dimensions: 8 feet 4 inches x 10 feet 2 inches.}.  
Condition: Please contact gabe@michaans.com for condition information.

**Estimate:**  
**\$400 / \$500**



30  
**Indian Qom Style Wool Carpet.**  
{Approximate dimensions: 8 feet x 10 feet.}.  
Condition: Please contact gabe@michaans.com for condition information.

**Estimate:**  
**\$350 / \$450**



35  
**Romanian Kashan Style Wool Carpet.**  
{Approximate dimensions: 9 feet x 11 feet 11 inches.}.  
Condition: Please contact gabe@michaans.com for condition information.

**Estimate:**  
**\$400 / \$500**



31  
**Indian Herati Style Wool Rug.**  
{Approximate dimensions: 8 feet x 9 feet 8 inches.}.  
Condition: Please contact gabe@michaans.com for condition information.

**Estimate:**  
**\$350 / \$450**



36  
**Romanian Tabriz Style Wool Carpet.**  
{Approximate dimensions: 8 feet 1 inch x 10 feet 3 inches.}.  
Condition: Please contact gabe@michaans.com for condition information.

**Estimate:**  
**\$450 / \$550**



37  
**Chinese Sumak Style Wool Rug.**  
{Approximate dimensions: 7 feet 10 inches x 9 feet 10 inches.}  
Condition: Please contact gabe@michaans.com for condition information.

**Estimate:**  
**\$350 / \$450**



38  
**Romanian Naeem Style Wool Carpet.**  
{Approximate dimensions: 8 feet 2 inches x 11 feet 6 inches.}  
Condition: Please contact gabe@michaans.com for condition information.

**Estimate:**  
**\$600 / \$700**



39  
**Romanian Tabriz Style Wool Rug.**  
{Approximate dimensions: 7 feet 11 inches x 10 feet 4 inches.}  
Condition: Please contact gabe@michaans.com for condition information.

**Estimate:**  
**\$400 / \$500**



40  
**Tibetan Green Wool Carpet.**  
Condition: Please contact gabe@michaans.com for condition information.

**Estimate:**  
**\$500 / \$600**



**Estimate:**  
**\$500 / \$750**

41  
**Pair of Savory & Sons Sheffield Silver-Plated Covered Vegetable Serving Dishes**

London, England.  
Third quarter 19th century.  
Each with two handles, liners, and scrolled feet. Decorated with a foliate motif. Monograms to both lids.  
Markings to undersides, 'A. B. Savory & Sons, London, Best Sheffield Heavy Silver Plating, 80 dwts, 8 lbs'. Marks repeated to the liners.  
{Approximate dimensions: 7 1/2 high x 14 3/4 wide x 10 1/4 inches deep.}  
Condition: Several small dents to the liners, light surface wear such as shallow scratches.



**Estimate:**  
**\$300 / \$500**

42  
**English Hawksworth, Eyre & Co Sterling Silver Octagonal Footed Bowl.**

1912.  
'HE & CO. LD. shield mark, lion passant, London leopard head, r date letter' to the side. The underside with 'Ryrie Bros LTD., 13372, RD 606564, 6'.  
{Approximate weighable silver: 24.0268 troy oz.}  
{Approximate dimensions: 5 5/8 high x 9 inches diameter.}  
Condition: Some tarnish, light surface scratches.



**Estimate:**  
**\$300 / \$500**

43  
**Large Low Grade Silver and Glass Inset Fibulae.**

The ovate brooch terminating in an elongated stick pin. Seven inset colored glass stones, hammered bird motif to the body with additional applied birds to the edge.  
{Approximate dimensions: 19 1/2 wide x 6 inches high.}  
Condition: Darkening to the metal. With a black plastic stand.



**Estimate:**  
**\$300 / \$500**

44  
**Gorham Art Nouveau Sterling Silver Cigarette Case.**  
Rhode Island.  
Circa 1900.  
With a repousse nude female to the lid.  
Marked 'lion passant, anchor, G, Sterling, B23' to the interior.  
{Approximate weighable silver: 3.3722 troy oz.} {Approximate dimensions: 3 3/8 high x 2 1/2 inches wide.}  
Condition: Latch has come loose. Significant tarnish and darkening. Some surface wear.



**Estimate:**  
**\$4,000 / \$6,000**

47  
**Shreve & Co. Art Nouveau Sterling Silver Tea Service.**  
Early 20th century.  
Comprising a large sterling tray, hot water kettle on stand, coffee pot, teapot, creamer, covered sugar, waste bowl, an additional covered vessel. All with 'H' monograms. All pieces marked with 'Shreve & Co., San Francisco, Sterling'.  
{Approximate weighable silver: 319.5984 troy oz.} {Approximate dimensions: Tray 31 1/2 wide x 20 1/4 inches deep.}  
Condition: Tarnish throughout. Dent to lid of covered vessel. Coffee pot with loose handle. Several small dents.



**Estimate:**  
**\$400 / \$600**

45  
**Russian 84 Silver Coffee Pot.**  
Finial to the lid, fluted body which bulges towards the bottom, on four feet.  
Markings are heavily worn, only '? TB' and '84' are legible.  
{Approximate weighable silver at .875 purity: 31.9787 troy oz.}  
{Approximate dimensions: 10 high x 10 1/4 inches long.}  
Condition: Gap between the handle and the spacer. Small pin to the handle is partially out. Markings are rubbed down. Light tarnish.



**Estimate:**  
**\$300 / \$500**

48  
**16 William Suckling Sterling Silver and Cobalt Blue Glass Individual Salt Shakers.**  
Birmingham, England.  
1963.  
Small shakers with pierced sides, cobalt glass inserts. Retailer by James Robinson, New York.  
Marked with 'S LD, anchor, lion passant, O'.  
{Approximate dimensions: 1 5/8 inches high.}  
Condition: Light tarnish and wear.



**Estimate:**  
**\$300 / \$500**

46  
**Italian Sterling Silver Vavassori Pinecone Bowl with Wood Liner**  
Round bowl with hammered sterling silver pinecone scales to the body.  
'Vavassori, star, 825, MI, 925, Sterling' to the underside, 'Sponza, star, 825, MI, 925' to the rim.  
{Approximate dimensions: 9 1/4 diameter x 3 inches high.}  
Condition: Light tarnish, minimal wear.



**Estimate:**  
**\$2,000 / \$2,500**

49  
**Collection of English Sterling Silver Shell and Fiddle Pattern Flatware, Various Makers.**  
Various makers, ages, monograms, etc. throughout. Comprising nine dinner knives, six luncheon knives, fourteen dinner forks, eleven salad forks, fifteen table spoons, eleven oval soup spoons, twelve teaspoons, and a ladle. Two salad forks are plated. (79 pieces total.)  
Various marks throughout, all appear English.  
{Approximate weighable silver: 135.3930 troy oz.}  
Condition: Tarnish, several bent tines, rust to knife blades.





**Estimate:**  
**\$600 / \$900**

**50**  
**S. Kirk & Son Golden Winslow Pattern Sterling Silver Flatware.**

Comprising eight dinner knives, eight butter spreaders, eight dinner forks, eight salad forks, seven oval soup spoons, nine teaspoons, six demitasse spoons, and an unassociated silver plated serving spoon. (55 pieces total.) All marked 'S. Kirk & Son, Sterling'. {Approximate weighable silver: 49.5710 troy oz.}. Condition: Light use.



**Estimate:**  
**\$1,300 / \$1,700**

**51**  
**Georg Jensen Acorn Pattern Sterling Silver Flatware.**

Denmark. Comprising nine dinner knives, eight luncheon knives, nine dinner forks, eight luncheon forks, eight salad forks, seven fish forks, ten oval soup spoons, ten teaspoons, eight smaller teaspoons, six bouillon spoons, six demitasse spoons, pastry server, and a small ladle. (91 pieces total). Some pieces marked 'Sterling, Denmark, Georg Jensen & Wendelas', the rest marked 'Georg Jensen in dotted circle, sterling, Denmark'. {Approximate weighable silver: 89.8686 troy oz.}. Condition: Some tarnish.



**Estimate:**  
**\$400 / \$600**

**52**  
**Two Fenton Favrene Glass Oval Vases Including 100th Anniversary.**

Comprising 'Wild Horses' Robin Spindler designed vase, and a vase with a wolf set in a landscape. 'Wild Horses' vase marked 'Fenton 100th, designed by RK Spindler, #63/950' to the underside, also with original stickers. Wolf vase marked 'Fenton' in triangle to the underside and 'The Howlin 1997' to the back, with the front signed 'Mollon'. {Approximate dimensions: 12 high x 8 1/4 inches wide.}. Condition: Minimal wear.



**Estimate:**  
**\$300 / \$500**

**53**  
**Fenton Favrene Glass Vases and Urn.**

Comprising two vases decorated in relief depicting a woman dancing with a flower and a woman gathering wheat; one vase with a blue matte finish and favrene relief, the other is favrene throughout. The urn is decorated in relief with two women dancing. All pieces with Fenton marks to the undersides and Fenton stickers. {Approximate dimensions: Vases 8 1/4 high x 5 1/8 inches diameter, urn 9 1/2 high x 4 1/4 inches diameter.}. Condition: Minimal wear.



**Estimate:**  
**\$300 / \$500**

**54**  
**Three Dave Fetty for Fenton Glass Pieces.**

Comprising a Dave Fetty hearts and vine pattern pitcher; a Dave Fetty two handled vase with a black hearts and vine pattern on a dark blue ground; and a Dave Fetty blue favrene pulled feather pattern vase. Pitcher marked with 'DLF Fenton, #179/1250' to the underside. Heart vine vase marked with 'DLF Fenton, #91/1450, Fenton 100th'. Pulled feather vase marked with 'Designed by Dave Fetty, #186/1250'. All pieces with Fenton stickers and retail tags. {Approximate dimensions: Pitcher 8 7/8 inches high, heart vine vase 10 inches high, pulled feather vase 8 3/8 inches high.}. Condition: Minimal wear.



**Estimate:**  
**\$300 / \$500**

**55**  
**Fenton Martha Reynolds Favrene Glass Vase on Brass Stand.**

With hand painted floral decoration. Marked with 'Fenton Designed by Martha Reynolds, #396/850' to the underside. {Approximate dimensions: 11 inches high.}. Condition: Minimal wear.



**Estimate:**  
**\$300 / \$400**

**56  
Four Fenton Favrene Painted Glass Articles Including Cats and Felicity Vase.**  
Comprising two floral painted cat figures, 'Felicity' vase, and a floral painted covered vase. One cat marked 'Honor Collection, #1229/3500. The other car marked 'Handpainted by M. Aicher'. Felicity vase marked 'Handpainted by ... illegible..., #746/1850'. Covered vase marked Handpainted by C. Riggs'. All pieces aside from the covered vase with Fenton stickers. {Approximate dimensions: Cats 4 7/8 inches high. Felicity vase 8 7/8 inches high. Covered vase 9 3/4 inches high.}. Condition: Minimal wear.



**Estimate:**  
**\$300 / \$500**

**59  
Eight Fenton Favrene Glass Articles.**  
Comprising two grapevine motif jars, covered bowl, pair of floral painted urns, floral painted bowl, floral painted clock, and a Fenton nameplate. All with Fenton marks, several with Fenton stickers. Condition: Minimal wear.



**Estimate:**  
**\$400 / \$600**

**60  
Nine Fenton Favrene Glass Blue Acid-Etched Vases & Table Articles.**  
Comprising a brass mounted urn, a pair of baluster vases, vase with flared mouth, conical vase, candle cover, bell, and two vase stands. All pieces with Fenton marks, most with Fenton stickers. {Approximate dimensions: Largest piece is the urn, which measures 11 high x 8 inches wide.}. Condition: Minimal wear.



**Estimate:**  
**\$300 / \$400**

**57  
15 Fenton Favrene Glass Articles.**  
Comprising two floral painted cat figures, two unpainted cat figures, two smaller cat figures, two seated dog figures, snail figure, four various egg paperweights, teddy bear paperweight, and a vase stand. Most with original Fenton stickers, some with marks to the undersides. Condition: Minimal wear, one egg with the original box.



**Estimate:**  
**\$300 / \$500**

**61  
Two Fenton Glass Vases: Myriad Mosaic and Favrene.**  
Mosaic vase with two handles and Favrene interior. Favrene vase with an etched chinoiserie design signed D. Rawson. Mosaic vase with various Fenton marks and sticker. {Approximate dimensions: Mosaic vase 6 1/2 inches high, favrene vase 10 5/8 inches high.}. Condition: Minimal wear.



**Estimate:**  
**\$300 / \$400**

**58  
Fenton Martha Reynolds Favrene Glass Painted Ginger Jar.**  
Martha Reynolds design, fluted body painted with floral decoration by P Hayhurst, with cover. Marked with 'Designed by Fenton, Martha Reynolds, # 631/790, Fenton Hand Painted By P. Hayhurst' to the underside. 'PH, Fenton' to the cover. With original Fenton retail sticker. {Approximate dimensions: 7 3/4 high x 6 1/4 inches diameter.}. Condition: Minimal wear.



**Estimate:**  
**\$300 / \$400**

**62  
14 American Lacy Glass and EAPG Patriotic Cup Plates including Eagle, Bunker Hill, Clay, Washington & Franklin.**  
Most from Boston, Sandwich. Circa 1835 and later. Lot also includes two alternate Ship cup plates, and Log Cabin /Tippicanoe / Harrison cup plates. {Approximate dimensions: 3 1/8 - 3 3/4 inches diameter.}. Lee/Rose. Condition: Several with chips to the rims.



**Estimate:**  
**\$300 / \$400**

63  
**11 American Lacy and EAPG Cup Plates, Including Lee / Rose Opalescent #332.**  
Mostly New England.  
Circa 1840 - 1860.  
Five lacy and six EAPG, including Lee/Rose 12, 41, 279, 310, 313, 332, 339 and 697.  
{Approximate dimensions: 3 1/8 - 3 5/8 inches diameter.}  
Lee/Rose and McKearin.  
Condition: Some with chips.



**Estimate:**  
**\$300 / \$400**

64  
**14 Lacy and Non-Flint EAPG Cup Plates, Including Lee / Rose #176A, #322, and a Berry Pattern Example.**  
New England, possibly some Pittsburgh.  
Circa 1835-1860.  
Eight lacy glass examples, and six EAPG. Most with scalloped edges; one hexagonal, one decagonal, and two with plain rims.  
{Approximate dimensions: 3 to 3 5/8 inches diameters.}  
Lee Rose, and McKee.  
Condition: A few with chips or flakes to rim edges.



**Estimate:**  
**\$300 / \$400**

65  
**Eight American Lacy and EAPG Glass Heart Pattern Cup Plates, Including Lee / Rose Opalescent #459.**  
New England, some Boston/Sandwich.  
Circa 1835-1850.  
Most Lacy; one EAPG. Including Valentine, Lee/Rose 425, 440, 447, 459, and 477.  
{Approximate dimensions: 3 1/4 - 3 1/2 inches diameter.}  
Lee/Rose.  
Condition: Four with flake or shallow chips.



**Estimate:**  
**\$300 / \$400**

66  
**Two French Legras Vases.**  
Yellow pate de verre enameled vase and a short globular green vase with geometric decoration in sunken relief.  
Yellow vase with painted mark, green vase with impressed mark.  
{Approximate dimensions: Yellow vase 12 1/4 high x 5 inches diameter, green vase 5 high x 4 3/4 inches diameter.}  
Condition: Minor surface wear, mainly to the undersides.



**Estimate:**  
**\$300 / \$500**

67  
**Two Continental Art Nouveau Hand Blown Iridescent Vases.**  
One cylinder form with silver metal mounts, the other is a slender tapering form with a flared rim and a round foot.  
{Approximate dimensions: Silver mounted vase 8 3/4 high x 4 inches diameter, other vase 12 1/2 high x 3 3/4 inches diameter.}  
Condition: Small chip to body of the silver mounted vase.



**Estimate:**  
**\$500 / \$800**

68  
**Schneider Blue Glass Vase.**  
France.  
Early 20th century.  
Blue to purple with orange accents, everted rim, round tapered foot.  
'Schneider' inscribed to the foot.  
Additional illegible inscriptions to the underside.  
{Approximate dimensions: 9 1/2 inches high.}  
Condition: Light wear to the underside.



**Estimate:**  
**\$500 / \$700**

69  
**Steuben Strawberry Mansion Trophy Form Vase.**  
Circa 1931.  
Designed by Frederick Carder in 1931 to commemorate the restoration of Strawberry Mansion in Philadelphia.  
'Steuben' incised to the underside.  
{Approximate dimensions: 11 5/8 high x 9 1/2 inches diameter.}  
Condition: Large chip to the base corner, with several other small chips.



**Estimate:**  
\$600 / \$800

**70**  
**Swarovski Limited Edition Crystal, "The Peacock", Original Case and Certification.**  
1998.  
Comprising "The Peacock" figure #09151/10000, framed certificate, small book, Swarovski handling gloves, and the case. Crystal laser marked with 'Swarovski mark, 09151/10000'. {Approximate dimensions: Crystal 10 1/4 inches high.}. Condition: Minimal wear.



**Estimate:**  
\$600 / \$800

**73**  
**Baccarat Malmaison Pattern Crystal Stemware and an Unassociated Cut Glass Decanter.**  
Comprising six wine glasses, seven champagne flutes, and the decanter. All stemware with Baccarat acid etched mark to the underside. Decanter with '24' incised to the top of the mouth and the stopper. {Approximate dimensions: Wine glasses 8 inches high, champagne flutes 7 5/8 inches high, decanter 10 3/4 inches high.}. Condition: Several small chips to the decanter body. Light surface wear to the stemware. Miniscule chip to one wine glass rim, two small chips to champagne flute rim.



**Estimate:**  
\$400 / \$600

**71**  
**French Gilt Cut Crystal Partial Table Service.**  
Decorated with an engraved and gilt foliate motif. Comprising a small decanter with no stopper, eight wine glasses, ten champagne coupes, five sherry glasses, four cordials, eleven brandy snifters, eight small bowls, and three small dishes. {Approximate dimensions: Decanter 7 1/4 inches high, wine glasses 6 7/8 inches high, coupes 5 inches high, sherry glasses 4 5/8 inches high, cordials 4 7/8 inches high, snifters 3 1/4 inches high, bowls 4 5/8 inches diameter, dishes 6 1/2 inches diameter.}. Condition: Minimal wear to gilt, light wear mainly to the undersides.



**Estimate:**  
\$800 / \$1,000

**74**  
**Baccarat Massena Pattern Cut Crystal Stemware.**  
Comprising twelve highball glasses, eleven wine glasses, and thirteen champagne flutes. All pieces with acid etched Baccarat mark to the undersides. {Approximate dimensions: Highballs 5 1/2 inches high, wine glasses 6 1/2 inches high, champagne flutes 8 5/8 inches high.}. Condition: Wine glass with small chip to rim. Minimal wear throughout.



**Estimate:**  
\$300 / \$500

**72**  
**German Cut Glass and Gilt Stemware Set.**  
Comprising nine water glasses, ten wine glasses, twelve smaller wine glasses, twelve shallow bowl champagne glasses, four low shallow bowl champagne glasses, nine cordials, and five saucers. All pieces with a cut grapevine motif, with the cut areas gilded. {Approximate dimensions: Water glasses 6 1/8 inches high, wine glasses 6 inches high, smaller wine glasses 4 3/8 inches high, champagne glasses 5 3/4 inches high, low champagne glasses 2 3/8 inches high, cordials 3 5/8 inches high, saucers 5 3/4 inches diameter.}. Condition: Minimal wear.



**Estimate:**  
\$800 / \$1,200

**75**  
**Wedgwood Pottery Black Basalt Figure of Voltaire and a Bust of Scott.**  
19th century. Voltaire impressed with 'Wedgwood' in two places to the underside, and 'Z'. Bust impressed with 'Wedgwood' and 'Scott' to the back, 'Wedgwood' to the underside. {Approximate dimensions: Voltaire 11 inches high, Scott bust 8 inches high.}. Condition: Minimal wear.



**Estimate:**  
\$800 / \$1,200

**76  
Wedgwood Basalt and Carrara  
Cupid and Psyche Figural  
Groups.**

19th century.  
Very similar with subtle differences. Carrara piece impressed with 'Cupid & Psyche' and 'Wedgwood' to the back. Basalt piece impressed with 'Wedgwood, C' to the underside. {Approximate dimensions: 8 1/4 high x 7 1/2 inches wide.}. Condition: No apparent cracks, chips, or repairs.



**Estimate:**  
\$700 / \$1,000

**77  
18th Century Wedgwood &  
Bentley Pottery Black Basalt  
Vase.**

1769-1780.  
Impressed Wedgwood & Bentley to the underside. {Approximate dimensions: 8 1/8 high x 4 3/8 inches diameter.}. Condition: A few cracks from age to the underside. Lacking cover.



**Estimate:**  
\$700 / \$1,000

**78  
Wedgwood Pottery Three  
Color Jasper Dip Covered Urn.**

Circa 1820.  
Executed in cane yellow, basalt, and white. Small two handled urn set on a square pedestal, Impressed with Wedgwood, Y. {Approximate dimensions: 7 5/8 high x 3 3/8 inches diameter.}. Condition: Apparent repairs to both handles, one with a small chip. Several miniscule surface marks.



**Estimate:**  
\$300 / \$500

**79  
Three Wedgwood and / or  
Wedgwood & Bentley Pottery  
Portrait Plaques.**

Comprising a jasper dip Wedgwood & Bentley portrait of a distinguished male; a framed basalt portrait of a woman, marked 'Julia', by Wedgwood, and a framed black portrait of James Hall 1794. Wedgwood & Bentley plaque marked 'Wedgwood & Bentley'. Basalt female marked 'Wedgwood, Julia'. James Hall marked to front 'James Hall A.M. 1794, Taffie F.'. {Approximate dimensions: Largest measures 6 1/4 high x 4 5/8 inches wide.}. Condition: James Hall with some loss to the black. Wear appropriate for the age.



**Estimate:**  
\$800 / \$1,200

**80  
Wedgwood Jasperware Plaque  
Depicting Eight Muses.**

19th century.  
Eight muses in a row, with a floral swag above. 'Wedgwood, J' impressed to the back. {Approximate dimensions: 9 3/8 wide x 4 inches high.}. Condition: A few faint dark marks which could likely be cleaned. Miniscule chip to one corner.



**Estimate:**  
\$600 / \$800

**81  
Two Wedgwood Oval Plaques  
each with Applied Female  
Figure.**

19th century.  
The first example three-color jasper dip with applique of a classically-clad woman playing lyre on a pale blue ground; with a white foliate border and sage green outer border. The second example blue jasper dip, of oval form with applique of a classically-clad woman. Both framed. 'Wedgwood' impressed to the back of the three color plaque. Smaller plaque mark is not visible due to the frame. {Approximate dimensions including frames: Three color 14 3/4 high x 13 1/8 inches wide, small oval plaque 8 1/4 high x 7 1/8 inches wide.}. Condition: Frames with wear, plaques appear to have minimal wear.



**Estimate:**  
\$300 / \$500

82  
**Wedgwood Jasper Dip and Sprigged Small Urn.**  
Late 19th century.  
Small two handled urn set on a round pedestal.  
Impressed with Wedgwood, D, three illegible impressions.  
{Approximate dimensions: 6 5/8 high x 3 1/8 inches diameter.}  
Condition: No apparent cracks, chips, loss, or repairs. Lacking cover.



**Estimate:**  
\$300 / \$500

85  
**Group of Various Wedgwood Jasperware Items.**  
Comprising four various pale blue dishes, pale blue vase, pale blue paperweight, pale blue handled carving knife, sage green jar, sage green small tray, sage green bell, basalt dish and paperweight, small lavender dish, and a Copeland Spode hunting motif teacup with saucer.  
All Wedgwood pieces with 20th century markings.  
Condition: Minimal wear overall.



**Estimate:**  
\$300 / \$500

83  
**Wedgwood Group of Various Jasperware.**  
Comprising a teapot, candlestick pair, shaker pair, small vase, teacup with saucer, and a small cup.  
All pieces with 20th century marks.  
{Approximate dimensions: Teapot 5 1/4 inches high, candlesticks 5 1/4 inches high, vase 5 inches high.}  
Condition: No apparent cracks, chips, or repairs. Very minor wear.



**Estimate:**  
\$700 / \$1,000

85A  
**Wedgwood Pottery Three Color Jasper Dip Dice Border Urn.**  
Circa 1820.  
White and yellow on a basalt ground, two handles.  
Impressed with Wedgwood to the underside.  
{Approximate dimensions: 11 high x 6 1/4 inches diameter.}  
Condition: Apparent subtle repairs to the handles. Lacking cover.



**Estimate:**  
\$300 / \$500

84  
**Two Wedgwood Bough Pots and a Jardiniere.**  
Comprising a pale blue two handled bough pot, a dark royal blue bough pot, and dark royal blue jardiniere.  
Pale blue pot impressed with 'Wedgwood, ZHO, M' to the underside. Royal blue pot with 'Wedgwood, 1000, illegible letters' to the underside. Jardiniere impressed with 'Wedgwood, England' to the underside.  
{Approximate dimensions: Pale blue pot 8 1/2 inches high, royal blue pot 7 1/2 inches high, jardiniere 5 1/2 high x 6 1/4 inches diameter.}  
Condition: Loss to finial on the pale blue pot lid. Minor wear throughout, mainly to the interiors and undersides.



**Estimate:**  
\$400 / \$600

86  
**Two Rookwood Pottery Celadon Glaze Vases.**  
1921, 1920.  
Both with forms that taper towards the top. Larger vase with a band of dolphins in relief around the bottom, the other with a floral band in relief around the top.  
Dolphin vase marked 'RP mark, XXI, 2323'. Floral vase marked 'RP mark, XX, 2111'.  
{Approximate dimensions: Dolphin vase 7 3/4 inches high, floral vase 6 1/4 inches high.}  
Deaccessioned from the Fine Arts Museums of San Francisco.  
Condition: Minimal wear.



**Estimate:**  
\$300 / \$400

87  
**Rookwood Pottery Lavender Glazed Vase, 1933 6364.**  
1933.  
Flared wide mouth, pinkish interior.  
Marked with 'RP mark, XXXIII, 6364' to the underside.  
{Approximate dimensions: 6 5/8 inches high.}  
Deaccessioned from the Fine Arts Museums of San Francisco.  
Condition: Minimal wear.



**Estimate:**  
**\$300 / \$400**

**88**  
**Rookwood and J.B. Owens Pottery Vases.**  
Rookwood 1902, Owens circa 1905. Both with painted floral decoration on a brown/orange ground. The Rookwood vase with a rounded body and narrow mouth, the Owens vase is four sided with a slightly tapered body.  
Rookwood vase marked 'RP mark, II, 861, artist cipher' to the underside. Owens vase marked '1, Owens, illegible, 112 to the underside.'  
{Approximate dimensions: Rookwood 6 3/8 inches high, Owens 6 1/8 inches high.}  
Deaccessioned from the Fine Arts Museums of San Francisco.  
Condition: Minimal wear.



**Estimate:**  
**\$300 / \$500**

**91A**  
**Robertson Pottery Mug and a Walrich Pottery Bookend.**  
Circa 1930.  
Mug with blue glaze and a buffalo form handle, the bookend with light blue glaze and a figure in relief.  
Bookend with Walrich potter sticker to the backside.  
{Approximate dimensions: Mug 4 3/4 inches high, bookend 4 7/8 inches high.}  
Deaccessioned from the Fine Arts Museums of San Francisco.  
Condition: Craziing to the mug's interior glaze. Minimal wear.



**Estimate:**  
**\$500 / \$800**

**89**  
**Rookwood Pottery Edward Hurley Vase, 1918 92E.**  
1918.  
Lavender glaze with a painted band of cherry blossoms along the top, lacking cover.  
Markings to underside 'RP mark, XVIII, 9wE, EH Edward Hurley cipher mark'.  
{Approximate dimensions: 4 3/8 high x 3 inches diameter.}  
Condition: Craziing to the glaze, minimal wear.



**Estimate:**  
**\$300 / \$400**

**92**  
**Rookwood Pottery Trumpet Vase, 1916 2237P.**  
1916.  
Dark green glaze with turquoise interior.  
Markings to underside 'RP mark, XVII, 2237, P'.  
{Approximate dimensions: 5 1/2 high x 4 5/8 inches diameter.}  
Deaccessioned from the Fine Arts Museums of San Francisco.  
Condition: Small chip to the rim.



**Estimate:**  
**\$300 / \$500**

**90**  
**Rookwood Pottery Turquoise Vase, 1928 2989.**  
1928.  
Slender neck with a round body, floral decoration in relief.  
Marked with 'RP mark, XXVII, 2989' to the underside.  
{Approximate dimensions: 7 inches high.}  
Condition: Some craziing, minimal wear.



**Estimate:**  
**\$700 / \$1,000**

**93**  
**Rookwood Amelia Sprague Commercial Club of Cincinnati Tankard.**  
Cincinnati, Ohio.  
1894.  
Pewter lid with 'CCC' monogram, the body with a hand-painted orange thistle on a green, brown, and orange ground. Lettering in low-relief along the mouth reads, 'MDCCCXCIV' (1894). Lettering along the foot in low-relief reads, 'Commercial Club of Cincinnati'. Inscribed mark to the underside, 'RP logo, 783, ASP (Amelia Sprague 1870-1951)'.  
{Approximate dimensions: 6 1/2 high x 4 1/2 inches diameter.}  
Condition: Minimal wear, some possible minor loss to glaze on raised lettering, could be from manufacturing.



**Estimate:**  
**\$300 / \$400**

**91**  
**Rookwood Pottery Teal Blue Vase, 1928 2141.**  
1928.  
Vertical floral relief decoration to the body.  
'RP mark, XXVIII, 2141'.  
{Approximate dimensions: 6 1/2 inches high.}  
Condition: Minimal wear.



**Estimate:**  
**\$500 / \$800**

94  
**Arequipa Pottery Terracotta Vase.**  
Marin County, CA.  
Circa 1911.  
Black painted floral decoration.  
'Arequipa California' painted to the underside.  
{Approximate dimensions: 5 3/4 high x 6 1/4 inches diameter.}  
Deaccessioned from the Fine Arts Museums of San Francisco.  
Condition: Some paint loss, various chipping. The piece appears quite worn but does not have any repairs or cracks.



**Estimate:**  
**\$500 / \$800**

97  
**Sevres-Style Porcelain Gilt-Metal-Mounted Footed Centerpiece.**  
Painted cobalt blue with gilt accents, courtship scene to one side and a floral arrangement to the other, floral decoration to the interior, gilt metal handles with faces.  
Sevres style crossed L mark with 'S'.  
{Approximate dimensions: 13 1/2 high x 19 wide x 9 1/2 inches deep.}  
Condition: Significant patina to the metal, some verdigris, very minor gilt loss.



**Estimate:**  
**\$400 / \$600**

95  
**Royal Crown Derby Imari Pattern Porcelain Service.**  
This is an assembled set, with variation in marks, pattern, and age. Comprising eleven dinner plates, twelve luncheon plates, eleven bread and butter plates, eleven teacups with twelve saucers, six coffee cups with six saucers, four demitasse cups with five saucers, single coffee cup with saucer, covered sugar, creamer, and a set of fish fork and knife set for six. All with Royal Crown Derby marks, various.  
{Approximate dimensions: Dinner plates 10 1/2 inches diameter, luncheon plates 8 1/2 inches diameter, bread plates 6 1/4 inches diameter.}  
Condition: Very minor surface and gilt wear.



**Estimate:**  
**\$1,000 / \$1,500**

98  
**Fine German Porcelain Cabinet Plate Painted with a Named Hunt Scene at Night.**  
German.  
Dated 1826. The original painting by Snÿders dates to 1823.  
The broad gilt rim border to face enclosing a roundel painted with lions attacking deer. Based on Snÿders' "Two Young Lions Chasing a Young Stag," of 1823. In this plate, the image has been reversed from the original.  
Reverse with enameled inscription, "Aus der Königl. Gemälde Gallerie in München./Nach Snÿders gemalt von B. Keim/1826."  
{Approximate dimensions: 9 inches diameter.}  
Condition: Light scratches and wear to the gilt rim, miniscule paint loss to the painted scene.



**Estimate:**  
**\$800 / \$1,000**

96  
**Vienna-Style Porcelain Ewer Painted with a Portrait Signed Ferol.**  
Late 19th century.  
Narrow mouth ewer with a figural gilt painted handle; the body with a female portrait in a gilt surround accented with enameled teal dots, on a ruby painted ground decorated with gilt floral foliate decoration.  
Portrait signed 'Ferol', blue painted beehive mark to the underside which reads 'Austria', 'Irene' painted in red.  
{Approximate dimensions: 16 1/2 inches high.}  
Condition: Minor gilt/paint loss, with some minor surface wear. No apparent cracks, chips, or repairs.



**Estimate:**  
**\$300 / \$500**

99  
**Collection of Various Herend Porcelains.**  
Hungary.  
Comprising five lily pad dishes of various sizes, small dish with parcel gilt and floral decoration, an asparagus form box, box with parcel gilt and floral decoration, small box decorated with birds and insects, and a figural grouping of four dogs.  
All pieces marked.  
Condition: Minimal wear throughout.





**Estimate:**  
\$400 / \$600

100  
**Three Nymphenburg White-Glazed Porcelain Gods and Goddesses After the Antique.**  
Munich, Germany.  
1754-1894.  
Comprising figural groups of Aeolus, Ceres, and Mars.  
All three with impressed shield marks to the underside. Aeolus with '34, 5', Ceres with '40,2', and Mars with 5, 37, 5'.  
{Approximate dimensions: Aeolus 15 1/4 inches high, Ceres 14 inches high, Mars 15 3/4 inches high.}.  
Condition: Mars figure with loss to feather on the helmet, likely repair to his cape, several small glue marks throughout indicate repairs, though the damage is not immediately evident.



**Estimate:**  
\$300 / \$500

101  
**Pair of Nymphenburg White Porcelain Rearing Horses.**  
Munich, Germany.  
Early 20th century.  
Each standing on an oval base, very slight variations in pose.  
Both pieces with green underglaze shield mark. One with '799, 5' impressed to the underside, the other with '862, 5'.  
{Approximate dimensions: 11 high x 11 inches long.}.  
Condition: Minimal wear.



**Estimate:**  
\$300 / \$500

102  
**Halcyon Days Carriage Clock and Four Porcelain Boxes, Original Packaging.**  
The carriage clock with a zodiac motif. Porcelain boxes comprising a globe form box, box decorated with birds in a cage, Mickey Christmas box, and a box with poetry to the lid.  
All pieces with their original boxes.  
{Approximate dimensions: Carriage clock 5 1/2 inches high.}.  
Condition: Minimal wear.  
Winder available.



**Estimate:**  
\$400 / \$600

103  
**Three Bisque-Headed Dolls, Two Armand Marseille and Another**  
Germany and France.  
Comprising a 17" A.M. 1894-1, on a ball-jointed body, reproduction legs; a 16" A.M. 640 and a 15" German doll marked 390A, 1 1/2 M. All of these are seated on wicker chair; painted wood bench, or painted wood ladderback chair.  
From the Collection of Elizabeth Homer, thence by descent.  
Condition: Chips to the feet of the AM 1894 doll and wear to the hands. The AM 640 doll with loss to the paint on the eyes. Minor marks to the bodies throughout.



**Estimate:**  
\$300 / \$500

104  
**Three German China Head Dolls.**  
Fourth quarter 19th century.  
All with painted features, including black hair and rosy cheeks. Doll in blue/white dress with china hands and legs, blue bead necklace. One doll in a pink dress with red shoes, the other in a taupe dress with dark blue shoes.  
{Approximate dimensions: Blue/white dress doll 22 1/4 high, pink dress 22 inches high, taupe dress 20 inches high.}.  
Condition: Wear to the clothing, mainly the taupe dress. Some wear to the soft limbs. Light wear to the painted features.



**Estimate:**  
\$300 / \$400

105  
**Four German China Head Dolls.**  
Fourth quarter 19th century.  
All with painted features. Three with china hands, two with china feet.  
Vintage and antique clothing, doll in a batiste dress, doll in a yellow and red dress, doll in white linen dress, and doll in blue and white stripe dress.  
Doll in linen dress marked 'Patent Appl'd For, Edith'.  
{Approximate dimensions: Largest 24 1/2 inches high, smallest 18 inches high.}.  
Condition: Doll with yellow and red dress with a chipped nose. Some wear to the painted features and clothing.



**Estimate:**  
**\$300 / \$400**

**106  
Four German China Head  
Dolls.**

Fourth quarter 19th century. All with painted features, including black hair and rosy cheeks. Three with china hands and legs. Two in antique period batiste dress. Large doll in batiste marked '10, Pat Dec. 7/80'. Doll in floral dress marked with '8'. Doll in brown print dress with illegible mark. {Approximate dimensions: Largest 23 1/2 inches high, smallest 18 inches high.}. Condition: Minor loss to painted features. Wear to the clothing, with several small tears.



**Estimate:**  
**\$300 / \$400**

**107  
Four Bisque-Head Dolls,  
Including an Armand Marseille  
2 Doll.**

All in period and vintage dress. Comprising an Armand Marseille doll with blonde hair in pink dress with china hands, Heinrich Handwerk doll in pink floral pattern dress with brown hair and china hands, brunette doll in white dress with composition body and limbs, and a blonde doll in a white and pink dress with china hands. Armand Marseille doll marked '370, A.M. 2 1/2, DEP, Made in Germany'. Heinrich doll marked 'HCH 4/0 H'. White and pink dress doll with a horseshoe. {Approximate dimensions: Largest 26 inches high, smallest 18 inches high.}. Condition: Some hairline cracks and small chips throughout. Minor wear to the clothing. The horseshoe marked doll lower legs are almost separated with sawdust loss. Armand Marseille doll hair is loose.



**Estimate:**  
**\$300 / \$400**

**108  
Two Bisque Head Dolls:  
Kestner 154 and Heinrich  
Handwerck 79-10.**

Kestner 154 doll with kid body, lower bisque pin jointed arms, and cloth lower legs; wearing a pink and white checkered dress. The Heinrich doll with sleep eyes, bisque on ball jointed body, some repainting, wearing a pink and white dress. Kestner doll mark obscured by the body. Heinrich doll marked '79, 10, Germany'. {Approximate dimensions: Kestner doll 13 1/2 inches high, Heinrich doll 17 inches high.}. Condition: Hairline cracks to the Heinrich doll's head, hair is separated, lacking earrings, minor cracking to the bisque limbs, pencil marks to the head. Some wear to the china limbs of the Kestner doll.



**Estimate:**  
**\$300 / \$500**

**109  
Three Bisque Head Dolls by  
Revalo, Kestner and Simon &  
Halbig.**

Revalo doll with brown hair, sleep eyes, ball jointed body, blue hat, and a white lace dress. Kestner doll with brown hair, sleep eyes, composition jointed body, and a white lace dress. Simon & Halbig Doll with composition jointed body, sleep eyes, and a blue and white dress with matching hat. Revalo doll marked 'Germany, Revalo'. Kestner doll marked 'Made in E. Germany, 9, 129'. Simon & Halbig doll marked 'SH 1079, DEP., 75, Germany'. {Approximate dimensions: Revalo doll 21 inches high, Kestner doll 16 1/2 inches high, SH doll 18 1/2 inches high.}. Condition: Revalo doll with wear and tear to clothing, marks to the body. Kestner doll with repair to shoes, some marks to the body and face, some wear and staining to the clothing. SH doll with some marks to the body, lacking earrings, light wear to the clothing, and stuck eyes.



**Estimate:**  
**\$300 / \$400**

**110  
Tinted Bisque Shoulder and Head Doll and a Bisque Head Doll.**

Bisque shoulder and head doll with a cloth body, bisque arms and legs, blue painted eyes, blonde hair, and a blue print batiste dress. Bisque head doll with red hair, brown glass eyes, composition bodies and limbs, a blue print white dress, and is seated in a rocker.

Shoulder and head doll with '11'. Faint markings to bisque head doll, 'C' is evident.  
{Approximate dimensions: Shoulder and head doll 22 inches high, bisque head doll 12 inches high.}  
Condition: Bisque head doll with paint loss to one hand. Light wear to both dolls.



**Estimate:**  
**\$300 / \$500**

**111  
Two 19th Century German Paper Mache Head Dolls.**

Fourth quarter 19th century. Both dolls in period dress. The larger example with a kid and cloth body, ringlets hairstyle, glass eyes, and a red/white dress. The smaller example with a glass bead necklace, blue and white dress.

{Approximate dimensions: Red/white dress doll 28 inches high, blue/white dress doll 24 inches high.}  
Condition: Paint loss/chipping. Chip to nose of the red/white dress doll. Wear to the soft limbs.



**Estimate:**  
**\$300 / \$400**

**112  
Four Bisque Dolls, Including an Armand Marseille Dream Baby Doll.**

Comprising A.M. doll with soft body, composition hands, and blue sleep eyes; baby doll with a five piece composition body, painted hair, and a white gown; doll with bisque body, sleep eyes, blonde hair, pink checkered dress, and painted shoes; and a miniature bisque doll in a blue dress. Wicker crib included.

A.M. doll marked 'AM'. Other baby doll marked '2/0, 151'.  
{Approximate dimensions: A.M. doll 8 inches high, baby doll 10 inches high, pink dress doll 9 inches high, miniature doll 3 inches high.}  
Condition: Light wear overall, composition heads show significant wear.



**Estimate:**  
**\$300 / \$500**

**113  
Schoenhut Circus Figures.**

First half 20th century. Comprising three various wood clowns, acrobat, ringmaster, and a monkey figure.  
{Approximate dimensions: All figures are similar in size, about 9 1/2 inches tall.}  
Condition: Wear to clothing including significant tearing and staining. Loss and wear to the painted finish. Acrobat, ringmaster, and a clown figure each missing an ear.



**Estimate:**  
**\$800 / \$1,200**

**114  
Roulet & Decamps Smoking Monkey Automaton.**

France. Circa 1900. Tan fur, with papier-mâché face, hands, and feet. Sitting on a wood base with a separately wound music box.  
{Approximate dimensions: 17 high x 8 1/2 deep x 8 1/4 inches wide.}  
Condition: Fur to one side of the face has separated, the pieces are available. Some wear to the papier-mâché elements including a chip to the top of the face. The piece has not been tested and has no winder.



**Estimate:**  
**\$300 / \$500**

**115  
Roulet & Decamps Drinking Bear Automaton.**

France. Circa 1930. With brown and white fur, plastic eyes, painted mouth. Winder included.  
{Approximate dimensions: 14 high x 9 wide x 12 1/2 inches deep.}  
Condition: Minor wear and very minor fur loss, patina to metal bottle and cup. Piece does not seem to be in working order, though the mechanism makes noise when it is wound and the button is pushed. Loss to cork in neck.



**Estimate:**  
**\$300 / \$400**

116  
**Pens and Pencil Including Waterman and Dupont, With a Tiffany & Co. Sterling Lock.**  
Comprising a Waterman pen, Waterman mechanical pencil, Dupont ballpoint pen, Bulgari ballpoint pen, pen with knife, and a small Tiffany & Co, sterling lock with original box. With Waterman leather two-pen case. Pens appropriately marked, Tiffany lock marked 'Please Return to Tiffany & Co., New York, 83233516, 2003, 925'.  
Condition: Light wear and tarnish throughout.



**Estimate:**  
**\$300 / \$400**

118A  
**19th Century American Folk Art Tole Ware Round Box.**  
New Hampshire. Circa 1835-1845. Orange and red painted decoration on a black ground. {Approximate dimensions: 3 3/4 high x 4 7/8 inches diameter.}. Deaccessioned from the Fine Arts Museums of San Francisco. Condition: The inner rim of the lid is separating. General wear appropriate for the age.



**Estimate:**  
**\$400 / \$600**

117  
**Olympiade Paris 1924 Concurrent Badge Pin with Vintage Unrelated Rugby Medals.**  
Rugby medals include one which reads 'Rugby Football Union of Northern California, In Appreciation Queens University RFC 1953, California, British Columbia Tour'. The other medals reads 'Rugby Champions 1936, Ed Graff Coach'. Rugby medals with original packaging.  
Condition: Some patina, minimal enamel loss to the Olympiad pin.



**Estimate:**  
**\$400 / \$600**

119  
**French 19th Century Deniere Bronze Figural Mantel Clock.**  
19th century. The white marble body with patinated bronze figures of "Plenty" modeled as two cherubs with cornucopia or grapes, surrounded with ormolu mounts and feet. The white enamel dial with Roman numeral hour markers and Arabic numeral minute numbers, pierced gilt bronze hands. Single chime movement. 'Denierre FT De Bronzes A Paris' to the dial. 'BR Denierre A Paris 245' to the movement. {Approximate dimensions: 17 high x 22 wide x 8 inches deep.}. Condition: The body is in significant need of repair. Three feet are detached but available. Several chunks of marble have come off, with two available. Some chipping to the marble. Minor patina and corrosion to the bronze. Pendulum included.



**Estimate:**  
**\$300 / \$400**

118  
**Victorian Turned Mahogany Cruet Stand with Two Bottles, and a Pair of 20th Century Cut Glass Decanters.**  
Cruet stand with bone trim. The stand has space for two smaller bottles, which are missing. {Approximate dimensions: Stand 10 1/2 high x 8 3/4 inches wide, bottles 9 1/4 inches high, decanters 7 1/2 inches high.}. Condition: One bottle with a repaired crack to the neck. Some cracking and discoloration to the bone trim of the stand. Minor wear throughout.



**Estimate:**  
**\$300 / \$500**

120  
**Pair of Italian Neoclassical Style Gilt Wood Two-Light Sconces.**  
20th century. 'Made in Italy' to the backsides. {Approximate dimensions: 44 1/4 high x 16 inches wide.}. Condition: Minor chipping and gilt loss.



**Estimate:**  
**\$600 / \$800**

121  
**Benin Bronze Oba Bust.**  
Bronze bust on a black painted base.  
{Approximate dimensions not including the base: 13 high x 6 1/4 inches wide.}  
Condition: Patina and wear to the bronze, minor paint loss to the base.



**Estimate:**  
**\$400 / \$600**

124  
**Austrian Art Deco Stefan Dakon Bronze Figure of a Female Dancer on Green Onyx Base.**  
Stefan Dakon (1904-1992). Silvered bronze on a stepped triangular base. 'Dakon' inscribed to the reverse. {Approximate dimensions: 8 1/2 inches high.}  
Condition: Hand have been repaired and reattached on the wrong sides. Surface wear to the bronze.



**Estimate:**  
**\$1,500 / \$2,500**

122  
**Roland Paris, 'Harlequin' at a Ball Masquerade, Cold Painted Bronze**  
Germany.  
Circa 1930.  
Roland Paris (German, 1894-1945). Masked figure painted in red and gilt, standing on a two-tiered marble base.  
'R Paris' to the back of the marble base.  
{Approximate dimensions: 14 high x 4 1/2 inches wide.}  
Reference: Roland Paris The Art Deco Jester King by Alberto Shayo, page 178.  
Condition: Three narrow cracks to the face. Small loss to one middle finger. Some paint loss, mainly to the back of the cape.



**Estimate:**  
**\$1,500 / \$2,500**

125  
**Paul Philippe 'Pierrette' Cold-Painted Bronze Figure**  
Berlin, France.  
Circa 1925.  
Paul Philippe (1870-1930). Modeled, cast and carved as a female Pierrette, on a green onyx base. Signed Philippe, and 'RM' foundry mark for Rosenthal und Maeder. {Approximate dimensions: 8 1/4 inches high x 2 1/4 inches diameter.}  
Condition: Minor patina to the bronze, minimal loss to paint. Chip to the onyx base.



**Estimate:**  
**\$1,000 / \$1,500**

123  
**Otto Hafenrichter, 'Niddy Impekevon' as the Bat Girl, Cold Painted Bronze**  
Austria.  
Circa 1930.  
Female with red cap and cape, set on a green agate base.  
Signature to bronze base, 'O. Hafenrichter'.  
{Approximate dimensions: 12 3/4 high x 5 3/4 wide x 3 1/2 inches deep.}  
Condition: Minor paint loss.



**Estimate:**  
**\$300 / \$400**

126  
**Art Deco Style Schmidt-Felling Bronze Figure of Macchiavelli.**  
Julius Paul Schmidt-Felling (German, 1835-1920). Black marble base.  
Inscribed 'Schmidt-Felling'.  
{Approximate dimensions: 9 5/8 inches high.}  
Condition: Minimal wear overall.



**Estimate:**  
**\$400 / \$600**

**127  
Collection of Five Art Deco  
Porcelain and Faience Figures,  
Including Rosenthal and  
Goldscheider.**

Comprising a Rosenthal nude female dancer #962, Rosenthal Egyptianesque woman with hands raised #961, Goldscheider figure of a woman getting dressed, a Austrian Metzler & Orloff woman with dog, and an Austrian figure of a flapper with grapes at her feet. Rosenthal dancer with 'Rosenthal Selb-Bavaria, 962, 16'. Rosenthal Egyptianesque woman with 'Rosenthal Germany Kunstabteilung Selb, 961'. Goldscheider figure with 'Goldscheider Wien, Hand-Decorated, Made in Austria, 6062, 73, 11'. Flapper figure with 'Crown over beehive, Wien, 11607'. {Approximate dimensions: Tallest 11 1/4 inches high, shortest 7 5/8 inches high.} Condition: Cracking to Goldscheider figures glaze. Very minor wear overall.



**Estimate:**  
**\$400 / \$500**

**130  
Art Deco Period Agate Mantle  
Clock.**

White and brown agate body, with copper accents, on a black slate base. Glass back and front. Gazelle mark to dial. '25641' to the movement. {Approximate dimensions: 14 high x 25 1/2 wide x 6 1/2 inches deep.} Condition: Wear to the copper finish. Crack on one white agate rail. Minor wear to the dial. Pendulum and winder included.



**Estimate:**  
**\$300 / \$500**

**128  
Alexandre Ouline Belgian  
Bronze Bust of a Man.**

(Alexandre Ouline, Belgian, active circa 1918–1940). Bronze bust of a male pulling a rope with a gilt finish on a black marble base. Signed 'Ouline'. 'Bronze' is also impressed in two areas around the base. {Approximate dimensions: 12 high x 15 wide x 7 1/2 inches deep.} Condition: Patinated, small marks to the marble base.



**Estimate:**  
**\$600 / \$800**

**131  
Brass Newel Post Lamp,  
Cherub Astride a Dolphin.**

Patinated brass, cherub holding a large torch with a glass shade, set on a dolphin. {Approximate dimensions: 54 1/2 high x 28 inches wide.} Condition: Small white deposits throughout.



**Estimate:**  
**\$1,500 / \$2,500**

**131A  
Felix Agostini Pair Two Arm  
Wall Sconces in Patinated Gilt-  
Bronze Finish, circa 1940**

France. Circa 1940. Felix Agostini (French, 1910-1980). The wall sconces moulded as naturalistic branches, emerging from a single base or root. Four frosted glass cylinder shades. {Approximate dimensions: 18 high x 11 1/2 inches wide.} Provenance: From a San Francisco apartment designed by Steven Volpe. Condition: Very minor wear to gilt-bronze finish.



**Estimate:**  
**\$1,000 / \$1,500**

**129  
Art Deco H. Perrin Geometric  
Agate and Onyx Mantle Clock**

Paris, France. Circa 1930. The rectangulated elements designed in a series of steps forming an angular arch, of the two contrasting colored stones; with silver-metal accents. Octagonal dial. 'H. Perrin, 1er Prix. Paris, Nevers' to the dial. '995' to the movement backside. {Approximate dimensions: 11 high x 17 1/4 wide x 5 inches deep.} Condition: Very minor wear to the dial. Several small chips to the body and base. Winder available.



**Estimate:**  
**\$500 / \$750**

**131B  
Pair of Empire Style Patinated  
and Gilt Bronze and Giallo  
Antico Marble Seven-Light  
Candelabra Pair**

Early 20th century,. Now electrified. {Approximate dimensions: 39 high x 11 1/2 inches diameter.} Condition: Minor patina to bronze.



**Estimate:**  
\$15,000 / \$20,000

132  
**French Edgar Brandt and Daum Six Light Chandelier.**  
Circa 1925.  
Edgar Brandt (1880-1960) Antonin Daum (1864-1931).

Art Deco wrought iron and acid-etched six light chandelier. The patinated frame worked with foliate designs and flower heads within bands pendant from the later ceiling cap; the glass shades carved with interlocking scroll and curling foliate motifs. The shades acid-etched pale orange, pale green, and pale amber glass with gold foil inclusions. All glass shades engraved 'Daum, Cross of Lorraine, Nancy, France'. Chandelier body marked 'E. Brandt' {Approximate dimensions: 32 high x 25 inches diameter.}.  
Provenance: From a Mill Valley private collection, 1972 - Present. Purchased in 1973 from Sybarites Gallery in NY. From a Mill Valley private collection, 1973-Present This is very similar to that pictured in the 1926 Art Deco Paris Exposition.

Literature: Guillaume Janneau, *Le Luminaire: Art Deco Lampen 1925 -1937*, Paris, 1992, p. 49 (for a version of the chandelier exhibited at the Exposition Internationale des Arts Décoratifs et Industriels Modernes, Paris, 1925).

Joan Kahr, *Edgar Brandt: Master of Art Deco Ironwork*, New York, 1999, p. 140 (for a related model).

Joan Kahr, *Edgar Brandt: Art Deco Ironwork*, Atglen, PA, 2010, p. 121 (for a related model) and p. 139 (for a period photograph of the artist's gallery salon illustrating a related model).

Condition: Patina to the metal frame, later ceiling cap.  
Parallels: An identical example in form, with a signed ceiling cap, and one shade color throughout, was sold at Sotheby's, December 18

133  
**Dragonfly Pendant Shade, After Tiffany.**  
Light blue dragonflies on a lavender ground with orange and green accents, red and blue glass 'stone' mountings.  
{Approximate dimensions: 12 high x 19 1/4 inches diameter.}.  
Condition: No apparent issues, minimal wear..



**Estimate:**  
\$500 / \$800



**Estimate:**  
\$30,000 / \$40,000

133A  
**Tiffany Studios 'Curtain Border' Hanging Lamp #1615 -21.**

New York.  
Circa 1910.  
Pierced bronze canopy, six lights; the top section with yellow, green, and white glass panels arrange in a vertical pattern, with vertical blue textured glass panels around the rim, separated by small red and white square glass panels. Markings to the shades inner rim, 'Tiffany Studios, New York, 1615-21'. {Approximate dimensions from canopy top to shade bottom: 19 high x 24 1/2 inches diameter.}.  
Condition: Several small cracks to the glass. Significant green patina to the bronze lower rim, general patina to the canopy.



**Estimate:**  
\$300 / \$500

134  
**Charles H. Hansen Wood Sculpture, "Of The Sea".**

Carving of an aquatic plant-like form, on a round wood base.  
'C H Hansen' inscribed.  
{Approximate dimensions: 47 inches high.}.  
Condition: Some natural cracking to the wood, one apparent repair.



**Estimate:**  
\$1,500 / \$2,500

135  
**Steven Volpe French Art Deco Style Silvered and Gilt Wood Wall Mirror**

San Francisco, CA.  
Silver painted frame with gilt painted highlights. The mirror section is raised from the frame, which is mainly negative space.  
{Approximate dimensions: 35 3/4 high x 30 1/2 wide x 4 inches deep.}.  
Provenance: From a San Francisco apartment designed by Steven Volpe.  
Condition: Some wear and minor loss to the painted finish.



**Estimate:**  
\$1,000 / \$2,000

136  
**Anthony Redmile Pewter Stag with Malachite Mountings**  
Mid 20th century.  
Stag in a reclining position with its head turned. Malachite stones mounted to the head, back, and hind legs.  
No apparent markings.  
{Approximate dimensions: 20 1/2 high x 18 1/2 long x 6 1/2 inches wide.}  
Condition: White deposit to some of the creases and crevices. Wear to the bottom including verdigris and scratches.



**Estimate:**  
\$2,000 / \$3,000

137  
**Anthony Redmile Crane Cigarette Dispenser**  
Circa 1975.  
Crane with an ostrich egg body, silver-plated extremities, and an agate finial lid; standing on an ebonized wood octagonal base with broken ostrich egg ground.  
No apparent markings.  
{Approximate dimensions: 22 1/2 high x 10 wide x 12 1/4 inches deep.}  
Condition: Agate finial has been glued, and is coming loose. Minor wear to the ebonized wood.



**Estimate:**  
\$3,000 / \$5,000

139  
**Pair of Anthony Redmile Horn and Glass Occasional Tables**  
Circa 1975.  
Rotating glass tops mounted with agate and glass stones set in round metal discs, each table rests on three longhorn legs.  
'redmile, London' to one table top.  
{Approximate dimensions: 16 3/4 high x 22 1/2 inches diameter.}  
Condition: Light surface scratches to the glass. Light patina to the metal.



**Estimate:**  
\$1,000 / \$1,500

140  
**Set of Six French Art Deco Bone Inlaid Macassar Ebony Side Chairs**  
Circa 1930.  
Arched and rounded backs decorated with an inlaid circle. Red and white stripe pattern upholstery. {Approximate dimensions: 34 high x 17 3/4 wide x 18 inches deep.}  
Condition: One chair with a repaired leg. Minor wear to upholstery, including a dark stain to one chair. Noticeable scratch to one chair's back, and some scratches to the chair's back sides. Split to one chair's back. Overall wear is age appropriate.



**Estimate:**  
\$1,500 / \$2,500

141  
**Rosewood\* Veneered Club Chair in the Manner of Chateau**  
Circa 1940.  
The square arms continuous with the body and tapered foot with a deep bucketted seat. Fine, dramatic striped grain veneers. Chocolate brown riveted upholstery.  
No apparent markings.  
{Approximate dimensions: 37 1/2 high x 36 3/8 wide x 35 inches deep.}  
Condition: Some scuffs to the edges, and light scratches to the surface. Chip to the front of the foot. Very minor bubbling of the veneer to the back of the foot, with additional minor finish loss.  
\* This item may require US Fish & Wildlife CITES permit for export from the United States.



**Estimate:**  
\$2,000 / \$3,000

142  
**French Art Deco Adnet-Style Burl Walnut Semicircular Desk**  
France.  
Circa 1930-1940.  
The desk front with slender long drawers; shelving units organized in asymmetric manner to the sides. The desk top surface inlaid with brown-orange tooled leather. Brass hardware.  
No apparent markings.  
{Approximate dimensions: 30 1/2 high x 62 1/4 wide x 41 inches deep.}  
Condition: One noticeable scratch to the surface, and a few scuffs to the base, with additional minor marks throughout. Some light scuffs to the leather.  
Key available.





**Estimate:**  
**\$2,000 / \$3,000**

**143  
Italian Art Deco Burl Walnut  
Cabinet with Bakelite and Steel  
Handles**

Circa 1930.  
Burl veneer with ebonized trim.  
Asymmetrical design, with two single door cabinets flanking three short drawers. The steel handles decorated with orange and brown Bakelite accented with brass. Steel decoration to panels between the cabinets and drawers, as well. Dark red painted metal band to base. No apparent markings.  
{Approximate dimensions: 46 1/2 high x 77 wide x 19 3/4 inches deep.}  
Condition: Apparent wear and inconsistency in the finish, mainly to the top. Minor wear to the ebonized trim. Some minor cracking to the veneer throughout, and a small chip to the back corner. Some bending and separation to the metal band. Patina to the steel and brass. The asymmetrical design and dramatic arrangements of the individual cabinet elements is very similar to the work of Gaetano Borsani. Key available.



**Estimate:**  
**\$2,000 / \$3,000**

**144  
Signed Majorelle Macasser  
Ebony\* and Glass Occasional  
Table**

France.  
Circa 1930.  
Louis Majorelle (1859-1926).  
Beveled mirrored glass top on a vertically oriented macasser ebony body, intersected by two round glass panes, all resting on a silver-metal plinth base.  
Majorelle black mark to the lower body.  
{Approximate dimensions: 22 1/2 high x 33 wide x 25 2/4 inches deep.}  
Condition: Noticeable shallow scratches to the mirrored glass top. Very minor patina to the metal base.  
\* This item may require US Fish & Wildlife CITES permit for export from the United States.



**Estimate:**  
**\$300 / \$400**

**145  
Arts and Crafts Oak Hall Chair  
and Coat Rack**

Tall mirrored back with a carved swag and eight coat hooks; the seat with a storage compartment.  
{Approximate dimensions: 78 high x 31 wide x 16 inches deep.}  
Condition: Light wear overall, some scuffs and nicks and a spot of corrosion to the mirror.



**Estimate:**  
**\$600 / \$800**

**146  
Georgian Style Upholstered  
Sofa.**

With dramatic upswept arms; light blue floral pattern upholstery and a thick seat cushion.  
{Approximate dimensions: 47 high x 73 wide x 35 inches deep.}  
Condition: Light wear, some light staining to the apron.



**Estimate:**  
**\$300 / \$400**

**147  
English George IV  
Neoclassical Mahogany  
Pedestal Flip Top Games  
Table.**

First half 19th century.  
The table opens to reveal an inset green felt surface. When closed the outward facing side is carved with scrolls and rosettes.  
{Approximate dimensions while open: 33 3/4 x 34 1/4 x 28 1/4 inches high.}  
Condition: Some minor veneer loss/cracking/repairs. Overall wear is good for the age.



**Estimate:**  
**\$1,200 / \$1,700**

**148  
George IV Inlaid Rosewood  
Circular Breakfast Table.**

Circa 1830.  
Round top with a floral inlaid outer border, resting on three scrolled supports on a base with three claw feet on casters.  
{Approximate dimensions: 29 high x 52 inches diameter.}  
Condition: Minor cracks and rippling to the veneer, mainly to the base. Overall condition is very good for the age.



**Estimate:**  
**\$5,000 / \$10,000**

**149  
Collard & Collard Neoclassical  
Style Grand Piano.**

London.  
Late 19th century.  
Rosewood\* case with a foliate carved music stand and octagonal tapered legs. Green felt where appropriate, various brass hardware. Two pedals only.  
Collard & Collard, London to the key cover underside. 'Manufactured for Henry McIntosh 130 George St. Edinburgh' marked behind the music stand. Serial number 107564 to the case interior.  
{Approximate dimensions with lid raised: 79 deep x 56 1/2 wide x 62 1/2 inches high.}  
Condition: Very good overall. Very minor marks are visible on close inspection. Some wear and white stains to the finish under the portion of the lid which covers the keys, not normally visible. Very minor marks to the music stand, Some yellowing to the white keys. Wear to the finish where the key cover meets the body.  
\*Due to the wood contents of this lot it cannot be exported internationally.



**Estimate:**  
**\$2,000 / \$3,000**

**151  
Pair of Swedish 18th Century  
Neoclassical Fauteuils**

Sweden.  
Circa 1775.  
Attributed to Francois Reuze, oval upholstered back inset into conforming laurel-leaf-carved and moulded frame, joined to upholstered seat by conforming supports, raised on tapering fluted legs, headed by roundel filled blocks.  
{Approximate dimensions: 36 1/2 high x 24 1/4 wide x 25 inches deep.}  
Provenance: From a San Francisco apartment designed by Steven Volpe. Invoice 6103, 11/27/01, as purchased from Therien and Co.  
Illustrated: Saeks, Diane Dorrans: San Francisco Style, p. 35.  
Condition: Some loss to the painted finish, minor wear to the upholstery.



**Estimate:**  
**\$1,000 / \$1,500**

**150  
Biedermeier Period Fruitwood  
and Parcel Ebonized Center  
Table**

First half 19th century.  
Round surface held up by four ebonized columns accented with brass capitals and bases, set on a stepped round base with ebonized trim.  
{Approximate dimensions: 30 3/4 high x 46 1/2 wide x 40 1/4 inches deep.}  
Condition: Some cracking to the surface, apparent small fill in repairs, maybe to wormwood damage on the surface and base. Overall condition is good for the age.



**Estimate:**  
**\$400 / \$600**

**152  
19th Century French Empire  
Style Gilt-Bronze Mounted  
Mahogany Side Chairs, Set of  
Six.**

Late 19th century.  
Crest rail adorned with gilt-bronze mountings of two griffins and floral bouquets. Square taper legs, peach upholstery, and gilt-bronze mountings throughout.  
{Approximate dimensions: 36 1/2 high x 19 1/2 wide x 20 inches deep.}  
Condition: Overall wear is very good for the age, no loss to mountings.



**Estimate:**  
**\$500 / \$800**

**153  
Three Piece Louis XIV Style  
Salon Suite.**

Comprising a settee and two bergeres, each with gilt frames and needlepoint floral and courting scene upholstery  
{Approximate dimensions: Settee 42 high x 54 wide x 27 inches deep, bergeres 41 high x 26 1/2 wide x 24 inches deep.}  
Condition: Light gilt loss and chipping to the frames. Minor wear to the upholstery.



**Estimate:**  
\$500 / \$800

154  
**Louis XVI Style Ormolu Mounted and Inlaid Marquetry Two Tier Table.**

Both tray table surfaces with checkerboard marquetry surfaces. {Approximate dimensions: 35 high x 32 1/4 wide x 22 inches deep.} Condition: Very minor veneer loss and repair. Some water stains to the finish, light patina to the gilt bronze.



**Estimate:**  
\$400 / \$600

155  
**Victorian Floral Decorated Papier Mache Oval Tray with Stand.**

Second quarter 19th century. Floral decorated black lacquer tray set on later black lacquered bamboo motif stand. {Approximate dimensions with stand: 18 3/4 tall x 28 3/4 wide x 22 3/4 inches deep.} Condition: Some losses to painted decoration, crazing to black lacquer, light surface scratches. Later stand.



**Estimate:**  
\$400 / \$600

156  
**Pair of Custom Edward Wormley-Style Janus Type Tufted Lounge Chairs after Dunbar.**

Circa 2000. Edward Wormley (1907 - 1995). The demi-bucket backs on four lightly-tapering legs. Upholstered in off-white suede. {Approximate dimensions: 31 high x 33 wide x 24 inches deep.} Property from a San Francisco Apartment designed by Steven Volpe. Invoice 6092, November 20, 2001. Illustrated, Saeks, Diane Dorrans: San Francisco Style, p. 34, and noted in caption. Condition: Minor wear to the legs, minimal wear to the upholstery.



**Estimate:**  
\$400 / \$500

157  
**Pair of Tudor Style Carved Wood and Caned Armchairs.**

Various carvings including mermaids to the crest rail, caned backs and seats. Approximate dimensions: 51 high x 30 wide x 26 1/2 inches deep. Condition: Light wear overall, mainly to the feet.



**Estimate:**  
\$300 / \$500

158  
**Deyrolle, Set of 8 French Lithographs, Pedagogical for Accident Prevention.**

1950s. Each with four panels detailing various accident, including 'Feu, Eau, Contagion, Empoisonnements, and Maison'. Green painted wood frames, three lacking glass. {Approximate dimensions: 32 1/4 high x 25 inches wide.} Condition: Wear to the frames. Some darkening, wrinkling, and foxing to the posters.



**Estimate:**  
\$500 / \$750

159  
**Two Justen Ladda Silkscreen Works.**

2000. Varnish on wood, "Pink and Green Dress": Signed, dated, and titled on reverse. {Approximate dimensions: 19 high x 16 inches wide.} Provenance: From a San Francisco apartment designed by Steven Volpe. Condition: Minimal wear.



**Estimate:**  
\$800 / \$1,200

166  
**WALTER (CASTLE) KEITH (American 1863-1927) "Mother and Child"**

Oil on canvas. 8 1/4 x 10 1/4 inches; Frame: 11 1/8 x 13 inches. Signed lower left: Castle Keith; signed verso along the bottom stretcher bar: Castle Keith.



**Estimate:**  
\$1,500 / \$3,000

167  
**EDWARD DUFNER (American 1872-1957) "The Old Bureau"**

Oil on board. 9 1/4 x 7 1/2 inches; Frame: 11 5/8 x 9 3/4 inches. Signed lower left: Dufner; titled with inventory number verso upper left corner: No. 19 The Old Bureau; annotated verso along the bottom of the board: Mrs. Clarence Brown / Toledo O. / To Mohr Galleries.



168  
**PAUL CORNOYER**  
 (American 1864-1923)  
 "House on the Lake"  
 Oil on board.  
 8 x 10 inches; Frame: 12 1/8 x 14 1/4 inches.  
 Signed lower right: Paul Cornoyer.

**Estimate:**  
**\$1,000 / \$2,000**



172  
**AMERICAN SCHOOL**  
 (Late 19th / Early 20th century)  
 "Portrait of a Woman"  
 Oil on canvas.  
 33 x 27 1/4 inches; Frame: 49 x 42 inches.  
 Unsigned.

**Estimate:**  
**\$350 / \$450**



169  
**JESUS GUERRERO GALVAN**  
 (Mexican 1910-1973)  
 "Autorretrato de Pinto"; (Self Portrait)  
 Oil on board.  
 10 3/4 x 8 1/2 inches; Frame: 18 1/2 x 16 5/8 inches.  
 Signed lower left: J. Guerrero Galvan; annotated verso  
 "Autorretrato de pintor Guerrero Galvan en 1940"  
 Deaccessioned from the Fine Arts Museums of San Francisco.

**Estimate:**  
**\$3,000 / \$5,000**



173  
**LUCY HAYWARD BARKER**  
 (American 1872-1948)  
 "Indian Nude, 1898"  
 Oil on canvas.  
 Including frame: 36 1/2 x 25 3/8 inches.  
 Signed and dated lower left: Lucy Hayward 1898.  
 Provenance: Gifted to the Fine Arts Museum of San Francisco by Scott and Mary Elkington; Deaccessioned from the Fine Arts Museums of San Francisco.

**Estimate:**  
**\$400 / \$600**



170  
**DIEGO RIVERA**  
 (Mexican 1886-1957)  
 "Portrait of a woman"  
 Mixed media: watercolor, crayon and pencil on paper.  
 Sheet: 18 1/4 x 13 1/4 inches.  
 Signed and dated in pencil: D. Rivera 23 lower right.

**Estimate:**  
**\$10,000 / \$15,000**



174  
**GUY ROSE**  
 (American 1867-1925)  
 "The Plough"  
 Oil on canvas.  
 8 1/16 x 11 7/8 inches.  
 Signed lower left: Guy Rose; signed on the canvas verso: Guy Rose; annotated verso along the top and bottom stretcher bars: "Guy Rose 20 x 30 cm 1867-1925) / Sommaruga Collection.  
 Provenance: From the estate of a private Northern Californian collector  
 Condition: In overall good condition, the canvas is not relined. When examined under black light there is no visible areas of restoration.  
 Vertical crackle throughout painting especially visible in the sky. Minor dust and surface soiling would benefit from being cleaned.

**Estimate:**  
**\$4,000 / \$6,000**



171  
**CECIL C. BELL**  
 (American 1906-1970)  
 "Harry Wickey and Maria Listening to Music"  
 Oil on board.  
 10 x 14 inches; Frame: 16 1/8 x 20 1/8 inches.  
 Signed lower left: C. Bell; annotated verso: "Harry Wickey + Maria listening to Music / #342/ Cecil C. Bell \$500.00 Not for sale for sentimental reasons / Do Not Erase- This was written by Cecil C. Bell and Agatha Bell/ 1953 Harry Wickey" estate of C. Bell stamp verso center of the board.

**Estimate:**  
**\$400 / \$600**



175  
**LUCY HAYWARD BARKER**  
 (American 1872-1948)  
 "Portrait of Alice Kimball"  
 Oil on canvas.  
 18 1/2 x 24 1/2 inches; Frame: 20 x 26 1/2 inches.  
 Unsigned.  
 Deaccessioned from the Fine Arts Museums of San Francisco.

**Estimate:**  
**\$500 / \$700**



**Estimate:**  
\$400 / \$600

176  
**After HOWARD CHANDLER CHRISTY and RICHARD FAYERWEATHER BABCOCK**  
(American 1873-1952) and (American 1887-1954)  
"Gee!! I Wish I were a Man, I'd Join the Navy" and "Join the Navy: The Service for Fighting Men"  
Offset lithograph poster.  
Sight: 40 1/4 x 26 1/4 inches; Frame: 43 5/8 x 29 1/2 inches. Sight: 41 x 27 1/2 inches; Frame: 44 3/8 x 30 7/8 inches.  
Signed in the image: Howard Chandler Christy. Signed in the image: Babcock.  
Note: Both of these posters are mid 20th century reproductions.



**Estimate:**  
\$500 / \$700

177  
**CECIL CROSLY BELL**  
(American 1906-1970)  
"Busy Street" and "Fabric Market"  
Etching.  
Sheet: 11 1/8 x 15 inches. Sheet: 11 1/4 x 15 inches.  
Signed and dated lower right: Cecil C. Bell '33 and numbered lower left: 17/20- 2nd. Signed and dated lower right: Cecil C. Bell '31 and numbered lower left: 21-2nd.



**Estimate:**  
\$400 / \$600

178  
**GUSTAVE ADOLPH WIEGAND**  
(American / German 1870-1957)  
"Snow at Sundown"  
Oil on board.  
8 x 10 1/8 inches; Frame: 9 1/2 x 11 1/2 inches.  
Signed lower left: Gustave Wiegand. Exhibition label verso upper left corner from the Salmagundi Club for the Thumb-box exhibition with listed title and artist signature.



**Estimate:**  
\$700 / \$900

179  
**FRANK A. BICKNELL**  
(American 1866-1943)  
"Potters Wharf, Noank Connecticut"  
Oil on board.  
8 x 10 1/8 inches; Frame: 9 1/2 x 11 1/2 inches.  
Signed lower right: Frank A. Bicknell; titled and signed in pencil verso: "Potter's Wharf, Noank Conn" / Frank A. Bicknell.



**Estimate:**  
\$600 / \$800

180  
**Attributed to ALFRED JANSSON**  
(American / Swedish 1863-1931)  
"Landscape"  
Oil on board.  
13 3/4 x 14 1/8 inches; Frame: 19 3/4 x 20 1/4 inches.  
Signed initials and dated bottom center: A.J. 1888.



**Estimate:**  
\$1,000 / \$1,500

181  
**EUGENE FROMENTIN**  
(French 1820-1876)  
"Farm Landscape with Tree"  
Oil on canvas.  
32 x 25 1/2 inches; Frame: 39 3/8 x 32 5/8 inches.  
Visibly unsigned, bears the stamp of the workshop sale lower right.



**Estimate:**  
\$400 / \$600

182  
**ARTHUR WILLIAM REDGATE**  
(British 1860-1906)  
"The Hunt"  
Oil on canvas.  
13 7/8 x 20 3/4 inches; Frame: 18 1/8 x 25 1/4 inches.  
Signed lower right: A W Redgate.



**Estimate:**  
\$500 / \$700

183  
**JOHANN GEORG MEYER VON BREMEN**  
(German 1813-1886)  
"Mother and Children"  
Oil on canvas.  
8 1/4 x 6 3/8 inches; Frame: 19 x 17 3/8 inches.  
Signed and dated lower left: Meyer von Bremen 1883.  
CONDITION: In overall good condition; aging cracks throughout entire canvas. Canvas is not relined, no visible abrasions or areas of loss.  
\*was not examined under black light.



184  
**JEAN LURÇAT**  
 (French 1892-1966)  
 "Floral Still Life"  
 Silkscreen on fabric.  
 41 1/4 x 46 1/8 inches.  
 Signed bottom right center: Lurçat  
 CONDITION: In overall good condition; 1 1/2 inch deep abrasion in the fabric lower right corner with surface soiling throughout from being handled.

**Estimate:**  
**\$300 / \$400**



188  
**ENGLISH SCHOOL**  
 (19th century)  
 "Portrait of a Noble Woman"  
 Oil on canvas.  
 49 3/4 x 40 1/4 inches; Frame: 63 1/4 x 52 1/2 x 4 1/4 inches.  
 Unsigned.  
 CONDITION: In overall fair condition. The canvas has been relined. visible area of restoration at the top of the canvas top middle towards the right edge of the canvas. Areas of missing paint throughout, with craquelure throughout the figures bodice and chest. The bottom of her dress looks to have in painting throughout. \*Was not examined under black light.

**Estimate:**  
**\$700 / \$900**



185  
**PAUL BIVA**  
 (French, 1851-1900)  
 "Still Life of Flowers in Blue Bowl"  
 Oil on canvas.  
 45 x 58 inches.  
 Signed lower left: Paul Biva

**Estimate:**  
**\$3,000 / \$4,000**



189  
**HENRI DE TOULOUSE-LAUTREC**  
 (French 1864-1901)  
 "Portrait of a gentleman"  
 Watercolor and pencil on paper.  
 Sheet: 9 7/8 x 7 inches.  
 Signed in pencil lower right: T. Lautrec.  
 CONDITION: In overall good condition, when examined out of the frame the sheet is not laid down but has substantial foxing throughout on the both the back and front of the sheet. The foxing is also visible in the head of the figure, the sheet is hinged on the backing mat with archival tape at the top. There are no visible areas of missing paper or tears in the sheet. Australian airport customs stamp verso lower right (not on the actual sheet of the work).

**Estimate:**  
**\$10,000 / \$15,000**



186  
**GERMAN SCHOOL**  
 (19th century)  
 "Friar Drinking" and "Monk looking in a Tankard"  
 Oil on canvas.  
 16 x 12 1/8 inches; Frame: 25 1/4 x 21 1/4 inches. 16 x 12 inches; Frame: 25 1/8 x 21 1/8 inches.  
 Signed lower left: A. Huntley. Signed lower right: A. Huntley.  
 CONDITION: In overall good condition. "Friar Drinking" has two patches verso one right above the bottom stretcher bar and one right next to the right stretcher bar center. The canvas is not relined, but does look to have been cleaned. "Monk looking in a Tankard" in overall good condition, the canvas is not relined and there are no visible areas of repair or restoration. \*Neither was examined under black light.

**Estimate:**  
**\$500 / \$700**



190  
**After GUIDO RENI**  
 (Italian 1575-1642)  
 "Mary Magdalene"  
 Oil on canvas.  
 60 x 50 inches; Frame: 66 1/2 x 55 1/4 inches.  
 Unsigned.  
 In 1984 the canvas was subjected to a radiocarbon age dating analysis by Teledyne Isotopes and was determined to date back to the time period of 1630 +/- 75yrs, and so it is from the the 17th Century.

**Estimate:**  
**\$2,500 / \$3,500**



187  
**SIMON COMBES**  
 (British, 1940-2004)  
 "Leopard, 1971"  
 Oil on canvas.  
 47 x 35 inches.  
 Signed and dated lower right: Simon Combes '71.

**Estimate:**  
**\$3,000 / \$4,000**



**Estimate:**  
\$10,000 / \$15,000

191  
**KONSTANTIN ANDREEVICH SOMOV**  
(Russian 1869-1939)  
"Femme à la Mandoline"  
Oil on canvas.  
34 x 28 inches.  
Faintly signed lower right: Somov.  
Provenance: From the estate of a private Northern Californian collector  
Condition: In overall good condition. The canvas is not relined but there is a 1x1 inch patch verso. When examined under black light there are areas of in painting throughout; along the top of the canvas where it meets the frame, throughout her dress and curved arm on the table and where the figures arm is holding the mandolin which corresponds to the patch verso. Aged varnish discoloration throughout, would benefit from being cleaned and re-varnished.



**Estimate:**  
\$500 / \$700

194  
**LOUIS ICART**  
(French 1888-1950)  
"Bubbles"  
Etching with aquatint.  
Sheet: 22 1/8 x 17 1/8 inches;  
Frame: 23 3/4 x 19 inches.  
Signed in pencil lower right: Louis Icart and annotated 'A/525' with windmill stamp; copyright and date in the plate along the top of the image: Copyright 1930 by L. Icart Paris.



**Estimate:**  
\$1,500 / \$2,500

192  
**Attributed to MAURICE DE VLAMINCK**  
(French 1876-1958)  
"Houses in the Distance"  
Ink wash on toned paper.  
Sheet: 12 3/4 x 9 3/4 inches.  
Signed lower right: Vlaminck.  
CONDITION: In overall good condition; the sheet is not laid down but is taped along the top of the sheet. Due to the frame's fragile condition this lot is being sold without the frame. There are no visible abrasions or areas of missing paper.



**Estimate:**  
\$600 / \$800

195  
**ANTON HOFFMANN**  
(German 1863-1938)  
"David and Goliath"  
Oil on canvas.  
15 1/2 x 24 5/8 inches; Frame: 25 7/8 x 34 7/8 inches  
Signed lower left: Anton Hoffmann; Muenchen.  
CONDITION: In overall good condition, the canvas is not relined. Area of missing paint in the bottom center of the canvas. Pressure dents from the stretcher bars visible (mainly from the top stretcher bar). Craquelure throughout, would benefit from being re-stretched and varnished. Canvas is loose on the bars; \*was not examined under black light. The frame is in overall good condition two corners are missing their points and some of the gilt is missing throughout.



**Estimate:**  
\$3,000 / \$5,000

193  
**KONSTANTIN ALEXEIEVITCH KOROVIN**  
(Russian 1861-1939)  
"Le Port"  
Oil on board.  
15 x 19 1/2 inches.  
Signed lower right: C. Korovine.  
Provenance: From the estate of a private Northern Californian collector  
Condition: In overall good condition, when examined under black light there are some areas of filler in painting. The signature does not glow and the board looks to be completely in tact with no visible abrasions or areas of missing paint. 1/2 inch abrasion in the sky upper left quadrant. Would benefit from a light cleaning. Markings to the frame throughout.



**Estimate:**  
\$300 / \$500

196  
**After JULES MOIGNIEZ**  
(French 1835-1894)  
"Stopped Dog"  
Bronze.  
Including marble base: 8 3/4 x 14 x 8 inches.  
Bears signature on base under dog's tail: J. Moigniez.



**Estimate:**  
\$500 / \$600

197  
**EUROPEAN SCHOOL**  
(Early 20th century)  
"Off the Coast, Figures in a Boat"  
Oil on canvas.  
22 3/4 x 39 inches; Frame: 30 3/8 x 46 7/8 inches.  
Illegibly signed lower right.  
CONDITION: In overall good condition. Craquelure throughout due to age especially visible in the sky. \*was not examined under black light.



198  
**LOUISE NEVELSON**  
 (American 1899-1988)  
 "Untitled, 1957"  
 Wood and paper collage.  
 40 x 30 inches.  
 Signed and dated lower right: Louis Nevelson- 57.  
 Provenance: Property from a San Francisco Apartment designed by Steven Volpe. Two gallery labels verso: Ameringer Howard Yohe, New York NY and Hackett / Freedman Modern San Francisco CA.

**Estimate:**  
**\$5,000 / \$7,000**



199  
**JIM DINE**  
 (American b. 1935)  
 "Eight Hearts"  
 Screenprint in colors.  
 Sight: 24 x 29 inches; Frame: 31 3/4 x 36 5/8 inches.  
 Signed and dated in the image bottom center: Jim Dine 1970.  
 CONDITION: In overall good condition, when examined out of the frame the sheet is not laid down but is hinged at the top. There are no tears or abrasions to the sheet. The colors are bright and the image is clean. Please note that this work is not signed in pencil but is signed and dated in the image bottom center. The sheet has been trimmed.

**Estimate:**  
**\$800 / \$1,200**



200  
**EYVIND EARLE**  
 (American 1916-2000)  
 "The Garden of Eden"  
 Serigraph.  
 Sight: 23 1/2 x 31 1/4 inches; Frame: 35 5/8 x 48 3/8 inches.  
 Signed lower right: Eyvind Earle; numbered lower left: HC 3/10.

**Estimate:**  
**\$400 / \$600**



201  
**THOMAS MARTIN UTTECH**  
 (American b. 1942)  
 "Rock Formation"  
 Watercolor  
 Sight: 17 5/8 x 23 3/4 inches; Frame: 25 1/4 x 31 1/4 inches.  
 Signed and dated in the bottom right quadrant: T. Uttech 5-3-82 ©.

**Estimate:**  
**\$2,000 / \$3,000**



202  
**JOHN SAYERS**  
 (American 20th century)  
 "Summer Picnic"  
 Oil on board.  
 18 x 24 inches; Frame: 21 3/4 x 28 1/8 inches.  
 Signed lower left: Sayers.

**Estimate:**  
**\$600 / \$800**



203  
**PETER MAX**  
 (American b. 1937)  
 "Man with Umbrella"  
 Acrylic on canvas.  
 9 x 7 inches; Frame: 18 1/2 x 16 1/2 inches.  
 Signed and dated upper right corner: Max 1983; signed and dated twice verso: Max 70; © Peter Max 1986.

**Estimate:**  
**\$800 / \$1,200**



204  
**SOL LEWITT**  
 (American 1928-2007)  
 "Four colors in the round"  
 Glazed ceramic.  
 Diameter: 12 1/4 inches.  
 Stamped verso: S. Lewitt / Copyrights/ 1984 / Made in Deruta.  
 Provenance: Given to the current owner by the artist.

**Estimate:**  
**\$1,000 / \$2,000**



205  
**ROY AHLGREN**  
 (American 1927-2011)  
 "Al Khubar", "Terrestrial Facade II", "Asteroid" and "Twilight Bay"  
 Serigraph.  
 19 7/8 x 15 inches. 22 1/4 x 29 7/8 inches. 22 1/4 x 29 7/8 inches. 22 3/8 x 29 7/8 inches.  
 Signed and dated lower right: Ahlgren c. 1985; titled bottom center: Al Khubar; numbered lower left: 32/150. Signed and dated lower right: Ahlgren © 1982; titled bottom center: Terrestrial Facade II; numbered lower left: 36/130. Signed and dated lower right: Ahlgren © 1980; titled bottom center: Asteroid; numbered lower left: 58/150. Signed lower right: Ahlgren; titled bottom center: Twilight bay; numbered lower left: 20/100.

**Estimate:**  
**\$300 / \$500**





206  
**PETER MAX**  
 (American b. 1937)  
 "Kite Flyer", 1979  
 Serigraph.  
 Sight: 21 3/4 x 28 1/2 inches; Frame:  
 33 1/4 x 40 1/8 inches.  
 Signed in the lower margin: Max and  
 numbered lower left: H/C with the  
 artist blind stamp in the lower left  
 corner.

**Estimate:**  
**\$400 / \$600**



207  
**ROY DE FOREST**  
 (American 1930-2007)  
 "The Dog"  
 Color lithograph.  
 Sheet: 22 7/8 x 31 inches.  
 Signed upper left corner: Roy  
 DeForest, dated lower right: 1975  
 and numbered lower left: 125/150.

**Estimate:**  
**\$800 / \$1,000**



208  
**WILLIAM DAWSON**  
 (American 1901-1990)  
 "Bee" and "Centipede"  
 Painted gourd with loofa wings and  
 pipe cleaners. Painted gourd.  
 3 x 7 x 2 1/4 inches. 4 x 20 1/8 x 8  
 inches.  
 Both are unsigned.

**Estimate:**  
**\$400 / \$600**



209  
**WILLIAM DAWSON**  
 (American 1901-1990)  
 "Anteater", "Turtle" and "Bone  
 Figure"  
 Painted wood with applied rabbit fur.  
 Painted wood. Painted fragment of  
 bone mounted on a wood block.  
 3 1/2 x 9 1/2 x 2 1/2 inches. 2 1/2 x 6  
 1/4 x 3 1/2 inches. 2 3/4 x 3 3/8 x 1  
 5/8 inches.  
 Signed initials on the bottom front  
 foot: WD. Unsigned. Signed initials  
 on wood base: WD.  
 Provenance: Purchased from the  
 artist.

**Estimate:**  
**\$300 / \$500**



**Estimate:**  
**\$300 / \$500**

210  
**ROY AHLGREN**  
 (American 1927-2011)  
 "Probe", "Spatial Concept" and  
 "Great American Perspective"  
 Serigraph.  
 20 x 20 1/4 inches. 20 1/4 x 20 1/4  
 inches. 20 1/2 x 20 3/4 inches.  
 Dated lower right: 1973; signed  
 bottom center: Roy Ahlgren;  
 numbered and titled lower left: A/P  
 Probe. Signed and numbered lower  
 right: Roy Ahlgren 95/100; titled and  
 dated lower left: Spatial Concept-  
 1969. Signed and numbered lower  
 right: Roy Ahlgren A/P; titled and  
 dated lower left: Great American  
 Perspective- 1973.



**Estimate:**  
**\$2,000 / \$4,000**

211  
**JEFFREY RIPPLE**  
 (American b. 1962)  
 "Squash and Leaves"  
 Oil on arches paper.  
 Sheet: 22 1/4 x 30 1/4 inches;  
 Frame: 33 x 41 inches.  
 Signed and dated lower right: J.  
 Ripple '98; Arches watermark is  
 visible in the lower right corner of the  
 sheet.



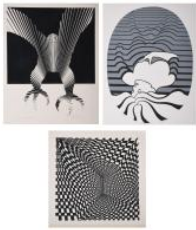
**Estimate:**  
**\$400 / \$700**

212  
**JOSEF ALBERS**  
 (American / German 1888-1976)  
 "Homage to the Square"  
 Offset print illustration.  
 Sheet: 7 3/4 x 7 3/3 inches.  
 Pencil signed and dated in the  
 margin lower right: Josef Albers '72.  
 (signature is slightly smudged)



**Estimate:**  
**\$800 / \$1,200**

213  
**MARK DI SUVERO**  
 (American b. 1933)  
 "Untitled"  
 Marker on paper.  
 Sight: 16 3/4 x 13 1/2 inches; Frame:  
 18 x 14 5/8 inches.  
 Signed and dated lower right: Mark  
 di Suvero 94.  
 Provenance: Given to the current  
 owner by the artist.



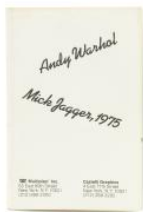
214  
**ROY AHLGREN**  
 (American 1927-2011)  
 "Eternal Vigilance", "Metamorphosis"  
 and "Concave Triad I"  
 Serigraph.  
 26 x 20 inches. 26 x 20 inches. 20  
 1/8 x 20 1/8 inches.  
 Signed lower right: Roy Ahlgren;  
 titled lower left: "Eternal Vigilance".  
 Signed and dated: Roy Ahlgren- 74;  
 titled bottom center: Metamorphosis;  
 numbered lower left: 43/60. Signed  
 and numbered lower right: Roy  
 Ahlgren 19/100; titled and dated  
 bottom center: "Concave Triad I"  
 1970"

**Estimate:**  
**\$300 / \$500**



217  
**LEROY NEIMAN**  
 (American 1921-2012)  
 "Leopard"  
 Silkscreen.  
 Sight: 33 1/2 x 46 1/4 inches; Frame:  
 40 1/2 x 52 3/8 inches.  
 Signed in pencil lower right: Leroy  
 Neiman and numbered lower left:  
 263/300.  
 CONDITION: In overall good  
 condition, was not examined out of  
 the frame. Mat burn around the  
 image from a previous framing.

**Estimate:**  
**\$1,200 / \$1,800**



215  
**ANDY WARHOL**  
 (American 1928-1987)  
 "Mick Jagger announcement  
 cards" (portfolio of 10)  
 Color offset lithograph on cream  
 wove paper, with original envelope.  
 Overall 6 1/8 x 4 1/4 inches.  
 Each card is signed in marker: Andy  
 Warhol; Announcement cards for  
 Warhol's "Mick Jagger" screenprint  
 portfolio, published by Seabird  
 Editions prior to the exhibition held at  
 Castelli Graphics in New York.

**Estimate:**  
**\$1,500 / \$2,500**



218  
**MARK DI SUVERO**  
 (American b. 1933)  
 "Untitled"  
 Mixed media on paper.  
 27 1/2 x 19 7/8 inches; Frame: 28  
 1/8 x 20 1/2 inches.  
 Signed lower right: Mark di Suvero.  
 Provenance: Given to the current by  
 the artist.

**Estimate:**  
**\$1,500 / \$2,000**



219  
**AMERICAN SCHOOL**  
 (20th century)  
 "Bull"  
 Charcoal with gouache drawing on  
 paper.  
 Sight: 11 5/8 x 9 3/8 inches; Frame:  
 17 1/8 x 17 1/8 inches.  
 Signed lower right: P. Wilson.

**Estimate:**  
**\$300 / \$500**



216  
**KEITH HARING**  
 (American 1958-1990)  
 "Swatch Advertisement"  
 Offset advertisement print.  
 Sheet: 15 1/4 x 10 3/4 inches.  
 Signed and dated in marker upper  
 right corner: K. Haring 86; with artist  
 remarque of a crawling baby next to  
 the signature.  
 Note: Keith Haring did an in store  
 signing at the Beverly Center, Los  
 Angeles on December 6, 1986 and  
 this advertisement is from that  
 signing.

**Estimate:**  
**\$300 / \$500**



220  
**MIKE HAUBENSTOCK**  
 (American 20th century)  
 "Untitled"  
 Oil on masonite.  
 28 1/4 x 22 1/4 inches; Frame: 31  
 1/4 x 25 1/4 inches.  
 Signed lower right: Haubenstock.

**Estimate:**  
**\$300 / \$500**



**221**  
**TETSUYA NODA**  
 (Japanese b. 1940)  
 "Diary: May 13, 1983", "Diary August 14, 1982", "Diary: April 3, 1976", "Diary: Oct 13, 1975" and "Diary: April 5, 1979"  
 Mixed media print.  
 25 x 19 1/4 inches. 19 1/8 x 24 7/8 inches. 24 3/4 x 19 1/8 inches. 25 x 17 3/4 inches. 23 3/8 x 33 inches.  
 Signed lower right: T. Noda (with artist finger print in red ink); titled and numbered lower left and center: Diary: May 13th '83 23/25. Signed and numbered lower right: T. Noda, A/P (with artist finger print in red ink); titled lower left: Diary: Aug 14th '82. Signed and numbered lower right: T. Noda 27/30 (with artist finger print in red ink); titled lower right: Diary: April 3rd '76. Signed and numbered lower right: T. Noda 27/30; titled lower right: Diary: Oct. 13th '75. Signed and numbered lower right: T. Noda 16/20 (with artist finger print in red ink); titled lower left: Diary: April 5th '79.

**Estimate:**  
**\$600 / \$900**



**222**  
**TETSUYA NODA**  
 (Japanese b. 1940)  
 "Diary: Oct 1, 1979", "Diary: April 13, 1980", "Diary: June 12, 1989", "Diary: November 26, 1979", "Diary: June 29, 1975" and "Diary: October 13, 1975"  
 Mixed media print.  
 11 3/4 x 16 3/8 inches. 19 1/4 x 12 1/4 inches. 23 5/8 x 16 1/2 inches. 11 5/8 x 16 3/8 inches. 24 3/4 x 19 1/8 inches. 25 x 17 3/4 inches.  
 Signed in pencil and numbered lower right: T. Noda 90/100 with artist finger print in red ink; titled lower left: Diary: Oct. 1st '79. Numbered and signed in pencil lower right: 93/130 T. Noda with artist finger print in red ink; titled lower left: Diary: April 13th '80. Numbered and signed in pencil lower right: A.P T.Noda with the artist finger print in red ink; titled lower left: Diary: June 12th '89. Numbered and signed in pencil lower right: 53/100 T. Noda with artist finger print impression in red ink; titled lower left: Diary: Nov 26th '79. Numbered and signed in pencil lower right: 9/30 T. Noda; titled lower left: Diary: June 29th '75. Numbered and signed in pencil lower right: 30/30 T. Noda; titled lower left: Diary: Oct. 13th '75.

**Estimate:**  
**\$800 / \$1,200**



**223**  
**SHOICHI IDA**  
 (Japanese 1941-2006)  
 "Between Vertical and Horizon: Paper between two stone and water no. 22", "Between Vertical and Horizon: Paper between a stone and water" and "Surface is to between the paper no.22"  
 Mixed media silkscreen.  
 31 x 21 1/8 inches. 31 x 21 1/2 inches. 19 1/8 x 15 3/4 inches.  
 Signed illegibly and dated '81 lower right; numbered lower left: 9/14 and titled bottom center: "Between Vertical and Horizon" "Paper Between Two Stones and Water No. 22". Signed illegibly and dated '81 lower right: numbered lower left: 10/20 and titled bottom center: "Between Vertical and horizon" "Paper Between a Stone and Water". Signed illegibly and dated '81 lower right; numbered lower left: 15/15 and titled bottom center: Surface to Between- The Paper no. 22; dedicated along the top left edge along the edge: To Irene Drori- Son Los Angeles 1981.

**Estimate:**  
**\$600 / \$800**



**224**  
**TETSUYA NODA**  
 (Japanese b. 1940)  
 "June 11, 1971", "Diary: April 13, 1980", "Diary: April 1, 1988", "Diary: Nov 30, 1990", "Diary: Nov 26, 1978" and "Diary: June 12, 1989"  
 Mixed media print.  
 22 1/8 x 22 inches. 19 3/8 x 12 1/4 inches. 23 1/2 x 16 1/2 inches. 23 1/2 x 16 1/2 inches. 11 5/8 x 16 1/2 inches. 23 5/8 x 16 5/8 inches.  
 Numbered and signed in pencil lower right: 13/30 T. Noda; titled lower left: June 11th '71. Numbered and signed in pencil lower right: 94/130 T. Noda with artist finger print impression in red ink; titled lower right: Diary: April 13th '80. Numbered and signed in pencil lower right: A.P. T. Noda with artist finger print impression in red ink; titled lower left: Diary: april 1st '88. Numbered and signed in pencil lower right: A.P. T. Noda with artist finger print impression in red ink; titled lower left: Diary: Nov 30th '90. Numbered and signed in pencil lower right: 23/100 T. Noda with artist finger print impression in red ink; titled lower left: Diary: Nov. 26th '78. Numbered and signed in pencil lower right: A.P. T. Noda with artist finger print impression in red ink; titled lower left: Diary: June 12th '89.

**Estimate:**  
**\$800 / \$1,200**



225  
**SALVADOR DALI**  
 (Spanish 1904-1989)  
 "Tiger Lilies", "Iris" and "Cactus: Les Béquilles" (from the Floral Suite)  
 Engraving with offset color lithograph.  
 All three measure: Sheet: 13 3/4 x 9 3/4 inches; Frame: 20 1/8 x 16 1/4 inches.  
 All three are signed in pencil lower right: Dali and numbered lower left in pencil 40/350.  
 Literature: Albert Field guild 72-7 (I, N,O)

**Estimate:**  
**\$1,400 / \$1,700**



226  
**OTTO ERNST**  
 (Swiss 1884-1967)  
 "Ascona"  
 Lithograph poster laid on linen.  
 Sheet: 39 1/4 x 27 3/4 inches; Linen: 41 x 29 3/4 inches.  
 Signed in the image lower left: Ernst  
 CONDITION: In overall good condition; the colors are bright and the impression is strong.  
 Discoloration consistent with age; visible crease on the left edge spanning vertically up the whole sheet. No visible areas of paper loss.  
 Notes: Situated on the banks of Lake Maggiore, Ascona has been a favorite retreat for artists and spa-lovers. Working in a Broders-esque vein, Ernst gives us the city's sheltered harbor and Santa Maria della Misericordia church. This is the Dutch variant of the design.

**Estimate:**  
**\$400 / \$600**



227  
**FRENCH SCHOOL**  
 (Early 20th century)  
 "Cognac Quevedo" and "Cigarettes Saphir"  
 Lithograph poster.  
 Sight: 31 x 23 inches; 34 1/4 x 26 1/4 inches. Sight: 46 1/2 x 31 inches; Frame: 49 1/8 x 33 1/8 inches.  
 Annotation printed along the bottom margin: IMP. PICHOT, 54 Rue de Clichy, Paris. Signed in the image lower right: Stephano; printer information along the bottom margin: IMP. MOULLOT-MARSEILLE.

**Estimate:**  
**\$500 / \$700**



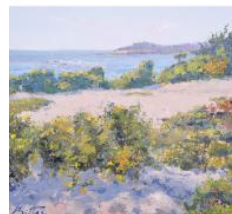
228  
**PIERRE BITTAR**  
 (French / American b. 1934)  
 "Summer Sail Boat"  
 Oil on canvas.  
 24 1/8 x 20 inches; 29 1/8 x 25 1/8 inches.  
 Signed lower left: Bittar.

**Estimate:**  
**\$1,500 / \$2,000**



229  
**MARC CHAGALL**  
 (Russian / French 1887-1985)  
 "Vitreaux pour Jerusalem"  
 Printed book leaf.  
 Sheet: 9 1/2 x 7 inches.  
 Signed in pencil in the bottom center: Marc Chagall; dedicated top center of the sheet: Pour Anne with remarque of plants with fish done in pencil and colored pencil.  
 CONDITION: In overall good condition; brown staining to the bottom left corner and small loss to the lower left corner of the paper.

**Estimate:**  
**\$400 / \$600**



230  
**PIERRE BITTAR**  
 (French / American b. 1934)  
 "Sea View"  
 Oil on canvas.  
 18 x 20 inches; Frame: 22 1/2 x 24 1/2 inches.  
 Signed lower left: Bittar.

**Estimate:**  
**\$1,200 / \$1,800**



236  
**Collection of Two Judith Leiber Rhinestone Bags.**  
 Including one black and colorless rhinestone clutch with optional yellow metal strap and comb inside together with one leopard pattern rhinestone pill box measuring approximately 42 x 58 mm.  
 Provenance: From the Sylvia Blumenfeld Trust, San Francisco CA.  
 Note: Clutch missing numerous rhinestones.

**Estimate:**  
**\$300 / \$500**



**Estimate:**  
\$300 / \$500

237  
**Collection of Three Stephen Dweck Bronze Metal Jewelry Items.**  
Including one bronze metal fancy link 24 inch necklace measuring approximately 12 mm in width; one matching bronze metal fancy link 20 inch necklace measuring approximately 10 mm in width together with a pair of bronze metal ear clips measuring approximately 39 x 25 mm.  
{Gross Weight: 265.3 dwts}  
Provenance: From the Sylvia Blumenfeld Trust, San Francisco CA.



**Estimate:**  
\$300 / \$500

241  
**Collection of Four Mexican Multi-Stone, Sterling Silver Jewelry Items.**  
Including an anchor pendant measuring approximately 73 x 44 mm; an oval shaped sheen obsidian cabochon, sterling silver ring, size 7 1/2; a pair of Los Castillo sterling silver twisted hoop non-pierced ear clips together with a pair of aventurine quartz, sterling silver non-pierced ear clips.  
{Gross Weight: 42.6 dwts}  
Provenance: From the Sylvia Blumenfeld Trust, San Francisco CA.



**Estimate:**  
\$600 / \$800

238  
**Native American Navajo C. Johnson Turquoise, Silver, Leather Concho Belt.**  
Featuring eight turquoise, silver scalloped border conchos measuring approximately 50 x 63 mm, completed by a turquoise, silver buckle measuring approximately 58 x 77 mm, suspended from a leather strap, forming an adjustable 32 to 35 inch belt.  
{Gross Weight: 182.0 dwts}



**Estimate:**  
\$300 / \$500

242  
**Collection of Mexican Black Onyx, Enamel, Sterling Silver Jewelry Items.**  
Including one sterling silver open work 15 inch necklace; one matching sterling silver open work 7 inch bracelet; a pair of black enamel, sterling silver checkered motif earrings; one pair of sterling silver lattice motif circle earrings together with two black onyx, sterling silver hinged bangle bracelets.  
{Gross Weight: 183.2 dwts}  
Provenance: From the Sylvia Blumenfeld Trust, San Francisco CA.



**Estimate:**  
\$300 / \$500

239  
**Henry Steig Sterling Silver Cuff Bracelet.**  
The modernist sterling silver cuff bracelet measuring approximately 55 mm in width with an internal diameter of approximately 58 mm.  
{Gross Weight: 23.7 dwts}



**Estimate:**  
\$600 / \$800

243  
**Pair of Diamond, Black Diamond, 14k White Gold Earrings.**  
Each featuring numerous round-cut diamond and black diamonds weighing a total of approximately 0.50 cttw., set in a 14k white gold mounting measuring approximately 25 x 15 mm. Total diamond weight for the pair is approximately 1.00 cttw.  
{Gross Weight: 5.7 dwts}



**Estimate:**  
\$300 / \$500

240  
**Collection of Two Pairs of Hermes Sterling Silver Cufflinks.**  
{Gross Weight: 19.2 dwts}



**Estimate:**  
\$300 / \$500

244  
**Collection of Five Pairs of Christofle Enamel, Sterling Silver Cufflinks.**  
Accompanied by two pouches.  
{Gross Weight: 63.9 dwts}



**Estimate:**  
**\$700 / \$900**

**245**  
**Diamond, Blackened Sterling Silver, 14k Yellow Gold Bracelet.**  
Featuring approximately three hundred and twenty-two round-cut diamonds weighing a total of approximately 4.75 cttw., set in a blackened sterling silver hinged bangle bracelet mounting measuring approximately 8 mm in width, completed by a 14k yellow gold tongue and groove clasp with figure eight safety and an internal diameter of approximately 59 mm.  
{Gross Weight: 13.2 dwts}



**Estimate:**  
**\$2,000 / \$3,000**

**249**  
**Natural Color Change Sapphire, Diamond, 14k White Gold Ring.**  
Centering one oval-cut color change sapphire weighing 1.02 ct., accented by full-cut diamonds weighing a total of approximately 0.75 cttw., set in a 14k white gold mounting.  
Accompanied by a GIA Gemological Report No. 6204602004 dated September 27, 2019 stating "Natural Corundum, Natural Sapphire. No Indications of Heating, Color: Blue changing to Purple."  
{Size: 7, Gross Weight: 2.1 dwts}



**Estimate:**  
**\$300 / \$500**

**246**  
**Aquamarine, Diamond, Blackened Sterling Silver Ring.**  
Featuring one emerald-cut aquamarine weighing approximately 8.80 cts., surrounded by round-cut diamonds weighing a total of approximately 0.45 cttw., set in a blackened sterling silver mounting.  
{Size: 6, Gross Weight: 3.5 dwts}



**Estimate:**  
**\$300 / \$500**

**250**  
**Cultured Pearl, Diamond, 14k White Gold Circle Brooch.**  
Featuring ten round cultured pearls measuring approximately 4.2 mm, accented by fifty single-cut and full-cut diamonds weighing a total of approximately 0.75 cttw., set in a 14k white gold circle mounting measuring approximately 31 mm.  
{Gross Weight: 3.7 dwts}



**Estimate:**  
**\$1,000 / \$1,500**

**247**  
**Aquamarine, Diamond, 14k White Gold Ring.**  
Featuring one pear-cut aquamarine weighing approximately 16.45 cts., accented by six full-cut diamonds weighing a total of approximately 0.50 cttw., set in a 14k white gold mounting.  
{Size: 7 1/4, Gross Weight: 6.4 dwts}



**Estimate:**  
**\$2,000 / \$3,000**

**251**  
**Natural Color Change Sapphire, Diamond, 14k White Gold Ring.**  
Centering one round-cut natural color change sapphire weighing 1.10 ct., accented by fourteen tapered baguette-cut and forty-eight full-cut diamonds weighing a total of approximately 0.75 cttw., set in a 14k white gold mounting.  
Accompanied by a GIA Gemological Report No. 5201602000 dated September 27, 2019 stating "Natural Corundum, Natural Sapphire. No Indications of Heating - Color is blue changing to violet."  
{Size: 7 1/2, Gross Weight: 2.6 dwts}



**Estimate:**  
**\$500 / \$700**

**248**  
**Diamond, 14k White Gold Jewelry Suite.**  
Including a round brilliant-cut diamond weighing approximately 0.35 ct., accented by eight full-cut diamonds weighing a total of approximately 0.15 cttw., set in a 14k white gold flower motif ring mounting, size 7 1/4 together with a matching pair of diamond, 14k white gold flower motif drop earrings measuring approximately 28 mm in length. Total diamond weight for the pair is approximately 1.50 cttw.  
Accompanied by a ring box.  
{Gross Weight: 6.8 dwts}



**Estimate:**  
**\$400 / \$600**

**252**  
**Sapphire, Diamond, 18k White Gold Ring.**  
Featuring three round-cut sapphires weighing a total of approximately 1.50 cttw., surrounded by sixteen full-cut diamonds weighing a total of approximately 1.00 cttw., set in an 18k white gold mounting.  
{Size: 6, Gross Weight: 3.3 dwts}



**Estimate:**  
\$2,000 / \$3,000

**253  
Sapphire, Diamond, 14k White Gold Ring.**

Centering one oval-cut sapphire weighing 1.03 ct., accented by four baguette-cut and fifty-six full-cut diamonds weighing a total of approximately 0.55 cttw., set in a 14k white gold mounting. Accompanied by a GIA Gemological Report No. 6204602003 dated September 30, 2019 stating "Natural Corundum, Natural Sapphire. No Indications of Heating." {Size: 7, Gross Weight: 2.8 dwts}



**Estimate:**  
\$4,000 / \$6,000

**257  
Emerald, Diamond, 18k Gold Ring.**

Centering one emerald-cut emerald weighing approximately 5.41 cts., accented by tapered baguette-cut and full-cut diamonds weighing a total of approximately 1.05 cttw., set in an 18k white gold mounting with yellow gold prongs. Accompanied by a GIA Gemological Report No. 2203365867 dated June 11, 2019 stating "Natural Beryl, Emerald. Clarity Enhanced (F1 - Minor)." {Size: 7, Gross Weight: 5.2 dwts}



**Estimate:**  
\$1,500 / \$2,500

**254  
Diamond, 14k White Gold Filigree Brooch.**

Centering one old European-cut diamond weighing approximately 1.40 ct., set in a navette shaped 14k white gold filigree bar brooch mounting measuring approximately 11 x 45 mm. {Gross Weight: 2.3 dwts}



**Estimate:**  
\$1,200 / \$1,600

**258  
Emerald, Diamond, 14k Gold Heart Ring.**

Centering five round-cut emeralds weighing approximately 0.75 cttw., surrounded by fifteen full-cut diamonds weighing a total of approximately 1.75 cttw., set in a 14k white gold heart shaped mounting. {Size: 6 1/2, Gross Weight: 4.9 dwts}



**Estimate:**  
\$1,800 / \$2,500

**255  
Natural Color Change Sapphire, Diamond, 14k White Gold Ring.**

Featuring one oval-cut color change sapphire weighing approximately 1.70 ct., accented by full-cut diamonds weighing a total of approximately 0.85 cttw., set in a 14k white gold mounting. Accompanied by a GIA Gemological Report No. 2201492376 dated August 8, 2019 stating "Natural Corundum, Natural Sapphire. No Indications of Heating. Color: Dark Blue changing to Dark Purple." {Size: 7, Gross Weight: 3.1 dwts}



**Estimate:**  
\$1,500 / \$2,500

**259  
LeVian Emerald, Diamond, 14k White Gold Ring.**

Centering one emerald-cut emerald weighing approximately 1.05 ct., accented by thirty-six full-cut diamonds weighing a total of approximately 1.00 cttw., set in a 14k white gold mounting. {Size: 6 3/4, Gross Weight: 4.8 dwts} Note: Inside shank signed "LeVian"



**Estimate:**  
\$1,000 / \$1,500

**256  
Pair of Emerald, Diamond, Blackened Sterling Silver Earrings.**

Each featuring twenty-one round-cut emeralds, accented by numerous round-cut diamonds, set in an articulated drop shaped blackened sterling silver mounting measuring approximately 57 mm in length. {Gross Weight: 9.5 dwts}



**Estimate:**  
\$500 / \$700

**260  
Diamond, 18k White Gold Flower Ring.**

Featuring twenty-four full-cut diamonds weighing a total of approximately 0.50 cttw., set in an 18k white gold mounting designed as a flower. {Size: 6 1/4, Gross Weight: 5.5 dwts}



**Estimate:**  
\$1,400 / \$1,800

**261**  
**Pair of Demantoid Garnet, Diamond, 18k White Gold Earrings.**  
Each featuring five oval-cut demantoid garnets weighing a total of approximately 4.40 cttw., accented by fifteen full-cut diamonds weighing a total of approximately 0.20 cttw., set in an 18k white gold articulated drop mounting measuring approximately 59 mm in length. Total demantoid garnet weight for the pair is approximately 8.80 cttw. Total diamond weight is approximately 0.40 cttw.  
{Gross Weight: 3.9 dwts}



**Estimate:**  
\$400 / \$600

**265**  
**\*Coral, Diamond, 14k White Gold Ring.**  
Featuring one round coral cabochon measuring approximately 11.1 mm, accented by round-cut diamonds weighing a total of approximately 0.03 cttw., set in a 14k white gold mounting.  
{Size: 6 1/2, Gross Weight: 2.7 dwts}



**Estimate:**  
\$500 / \$700

**262**  
**Peridot, Diamond, 14k White Gold Ring.**  
Centering one oval-cut peridot, flanked by two oval-cut peridots, accented by full-cut diamonds weighing a total of approximately 0.50 cttw., set in a 14k white gold mounting. Total peridot weight for the ring is approximately 3.00 cttw.  
{Size: 6, Gross Weight: 4.8 dwts}



**Estimate:**  
\$500 / \$700

**266**  
**Diamond, 14k White Gold Ring.**  
Featuring full-cut diamonds weighing a total of approximately 0.50 cttw., set in a 14k white gold hammered mounting.  
{Size: 6, Gross Weight: 2.3 dwts}



**Estimate:**  
\$600 / \$800

**263**  
**\*Men's Coral, Diamond, 14k White Gold Ring.**  
Centering one oval shaped coral cabochon measuring approximately 15.5 x 11.7 mm, surrounded by tapered baguette-cut diamonds weighing a total of approximately 1.40 cttw., set in a 14k white gold mounting.  
{Size: 10 1/4, Gross Weight: 8.4 dwts}



**Estimate:**  
\$600 / \$800

**267**  
**\*Men's Coral, Diamond, 14k White Gold Saddle Ring.**  
Centering one rectangular shaped coral saddle cabochon measuring approximately 16 x 5 mm, surrounded by baguette-cut diamonds weighing a total of approximately 0.55 cttw., set in a 14k white gold mounting.  
{Size: 9 1/2, Gross Weight: 5.3 dwts}



**Estimate:**  
\$400 / \$600

**268**  
**\*Coral, 14k White Gold Ring.**  
Featuring two oval shaped coral cabochons measuring approximately 10.8 x 8.5 mm, set in a 14k white gold textured branch motif mounting.  
{Size: 8, Gross Weight: 3.2 dwts}



**Estimate:**  
\$1,200 / \$1,600

**264**  
**Diamond, 14k White Gold Necklace.**  
Featuring seven graduated round brilliant-cut diamonds weighing a total of approximately 1.50 cttw., bezel set and suspended from a 14k white gold chain, forming a 16 inch necklace.  
{Gross Weight: 1.1 dwts}



**Estimate:**  
\$400 / \$600

**269**  
**Pair of Diamond, 18k White Gold Earrings.**  
Each featuring thirty-nine round-cut diamonds weighing a total of approximately 0.50 cttw., set in an 18k white gold open pear shaped drop mounting measuring approximately 27 mm in length. Total diamond weight for the pair is approximately 1.00 cttw.  
{Gross Weight: 2.5 dwts}





**Estimate:**  
\$1,200 / \$1,400

270  
**Ruby, Diamond, 14k White Gold Ring.**  
Featuring nine oval-cut rubies and twenty-six calibre-cut rubies weighing a total of approximately 3.00 cttw., accented by twelve round-cut diamonds weighing a total of approximately 0.05 cttw., set in an 18k white gold mounting.  
{Size: 7, Gross Weight: 4.9 dwts}



**Estimate:**  
\$800 / \$1,200

274  
**Diamond, 14k White Gold Ring with Diamond Ring Guard.**  
Including one old European-cut diamond weighing approximately 0.95 ct., set in a 14k white gold mounting, size 8 together with a single-cut diamond, 14k white gold ring guard, size 8.  
{Gross Weight: 7.8 dwts}



**Estimate:**  
\$1,200 / \$1,400

271  
**Pink Tourmaline, Diamond, 14k Gold Ring.**  
Featuring one oval-cut pink tourmaline weighing approximately 3.15 ct., accented by two full-cut and ten baguette-cut diamonds weighing a total of approximately 1.00 cttw., set in a 14k yellow and white gold mounting.  
{Size: 9, Gross Weight: 5.1 dwts}



**Estimate:**  
\$3,000 / \$5,000

275  
**Ruby, Diamond, 14k Gold Ring.**  
Centering one oval-cut ruby weighing 1.30 ct., accented by four baguette-cut and fifty-eight full-cut diamonds weighing a total of approximately 1.15 cttw., set in a 14k yellow and white gold mounting. Accompanied by a GIA Gemological Report No. 2203602009 dated September 27, 2019 stating "Natural Corundum, Natural Ruby. No Indications of Heating."  
{Size: 7, Gross Weight: 3.0 dwts}



**Estimate:**  
\$1,000 / \$1,200

272  
**Ruby, Diamond, 14k White Gold Ring.**  
Centering one oval-cut ruby weighing approximately 1.40 ct., surrounded by tapered baguette-cut diamonds weighing a total of approximately 0.35 cttw., set in a 14k white gold mounting.  
{Size: 7 1/4, Gross Weight: 2.4 dwts}



**Estimate:**  
\$300 / \$500

276  
**Collection of Two Pairs of S.T. Dupont and Christofle Cufflinks.**  
Both accompanied by original boxes.  
{Gross Weight: 16.7 dwts}



**Estimate:**  
\$4,000 / \$6,000

273  
**Spinel, Diamond, 14k White Gold Ring.**  
Featuring one cushion-cut spinel weighing approximately 5.30 cts., accented by eighty princess-cut diamonds weighing a total of approximately 2.75 cttw., set in a 14k white gold mounting. Accompanied by a GIA Gemological Report No. 2205600529 dated October 2, 2019 stating "Natural Spinel. No Indications of Heating."  
{Size: 7 3/4, Gross Weight: 8.2 dwts}  
Note: Spinel loose, prongs need to be tightened.



**Estimate:**  
\$600 / \$800

277  
**Collection of Three 14k Gold Ring Mountings.**  
Including one 14k white gold ring mounting, size 6 1/2; one 14k yellow gold folded motif ring mounting, size 9 1/2 together with one 14k yellow gold textured nugget motif ring mounting, size 6 3/4.  
{Gross Weight: 21.4 dwts}



278  
**Sapphire, 14k Yellow Gold Jewelry Suite.**  
 Including one round-cut sapphire, 14k yellow gold ring, size 6 together with a pair of round-cut sapphire, 14k yellow gold earrings measuring approximately 27 x 14 mm.  
 {Gross Weight: 8.1 dwts}

**Estimate:**  
**\$300 / \$500**



282  
**French Turquoise Intaglio, 18k Yellow Gold Ring.**  
 Featuring one oval shaped turquoise intaglio depicting flowers and measuring approximately 21 x 16 mm, set in an 18k yellow gold mounting.  
 {Size: 5 1/2, Gross Weight: 4.8 dwts}  
 Note: Outside shank features French eagle head hallmark.

**Estimate:**  
**\$300 / \$500**



279  
**Cultured Pearl, 14k Yellow Gold Jewelry Suite.**  
 Including one 7.3 mm to 6.9 mm cultured pearl, diamond, 14k yellow and white gold barrel form clasp, 36 inch necklace; one 6.5 mm cultured pearl, 14k yellow gold 7 1/2 inch bracelet together with a pair of cultured pearl, 14k yellow gold stud earrings with removable jackets measuring approximately 34 mm in length.  
 {Gross Weight: 49.1 dwts}

**Estimate:**  
**\$300 / \$500**



283  
**Collection of Two Coin Form, 14k Yellow Gold Pendants.**  
 Including one ancient coin form, 14k yellow gold anchor pendant measuring approximately 44 x 25 mm together with a 14k yellow gold sombrero pendant measuring approximately 32 mm.  
 {Gross Weight: 13.2 dwts}

**Estimate:**  
**\$400 / \$600**



280  
**Men's Diamond, 14k Yellow Gold Ring.**  
 Featuring one round brilliant-cut diamond weighing approximately 0.75 ct., set in a 14k yellow gold mounting.  
 {Size: 12 3/4, Gross Weight: 14.8 dwts}

**Estimate:**  
**\$1,000 / \$1,500**



284  
**Turquoise, Diamond, 14k Yellow Gold Jewelry Suite.**  
 Including one oval shaped turquoise cabochon measuring approximately 22 x 17 mm, accented by four full-cut diamonds weighing a total of approximately 0.45 cttw., set in a 14k yellow gold mounting measuring approximately 46 x 30 mm together with a pair of turquoise, 14k yellow gold stud earrings.  
 {Gross Weight: 12.7 dwts}  
 Note: Back of pendant marked "JF" in an upside down triangle.

**Estimate:**  
**\$400 / \$600**



281  
**Pair of Star Sapphire, 14k Yellow Gold Cufflinks.**  
 Each featuring one oval shaped star sapphire cabochon measuring approximately 6.4 x 5.5 mm, set in a 14k yellow gold star motif mounting measuring approximately 24 x 18 mm.  
 {Gross Weight: 5.5 dwts}

**Estimate:**  
**\$300 / \$500**



285  
**Collection of Three Pairs of Diamond, 14k Yellow Gold Earrings.**  
 Including one pair of diamond, 14k yellow and white gold square shaped earrings measuring approximately 24 x 19 mm; one pair of 14k yellow gold foiled texture abstract motif earrings measuring approximately 32 x 17 mm together with a pair of 14k yellow gold overlapping diamond shaped, hammered earrings measuring approximately 33 x 26 mm.  
 {Gross Weight: 9.8 dwts}

**Estimate:**  
**\$300 / \$500**



286  
**Diamond, 14k Yellow Gold Ring.**  
 Featuring one emerald-cut diamond weighing approximately 1.95 ct., set in a 14k yellow gold graduated fan motif mounting.  
 {Size: 7, Gross Weight: 5.3 dwts}

**Estimate:**  
**\$4,000 / \$6,000**



287  
**Mario Buccellati Turquoise, 18k Yellow Gold Flower Brooch.**  
 Designed as a branch of three flowers, each centering one oval shaped turquoise cabochon measuring approximately 13.4 x 7.6 mm, set in a textured 18k yellow gold mounting measuring approximately 71 x 60 mm.  
 {Gross Weight: 25.8 dwts}  
 Note: Back of stem signed "M. Buccellati"

**Estimate:**  
**\$1,000 / \$1,500**



288  
**14k Yellow Gold Neck Chain.**  
 The 14k yellow gold rope link measuring approximately 4 mm in width, completed by a box clasp, forming a 27 inch neck chain.  
 {Gross Weight: 10.2 dwts}

**Estimate:**  
**\$300 / \$500**



289  
**Hardstone, Diamond, 14k Yellow Gold Ring.**  
 Featuring one hardstone cabochon measuring approximately 10.3 mm, accented by three full-cut diamonds weighing a total of approximately 0.15 cttw., set in a textured 14k yellow gold mounting.  
 {Size: 6 1/4, Gross Weight: 4.4 dwts}

**Estimate:**  
**\$300 / \$500**



290  
**Yellow Gold Dolphin Jewelry Suite.**  
 Including one 18k yellow gold dolphin pendant measuring approximately 29 x 16 mm; one pair of 14k yellow gold dolphin fin earrings measuring approximately 30 x 21 mm together with a 14k yellow gold braided link, 7 inch bracelet.  
 {Gross Weight: 7.9 dwts}

**Estimate:**  
**\$300 / \$500**



291  
**Henry Steig Chalcedony, 14k Yellow Gold Ring.**  
 Featuring one oval shaped dyed green chalcedony cabochon measuring approximately 17.7 x 9.4 mm, set in a 14k yellow gold mounting.  
 {Size: 6, Gross Weight: 6.8 dwts}  
 Note: Inside shank signed "Steig", stone loose.

**Estimate:**  
**\$300 / \$500**



292  
**Pair of Emerald, 14k Yellow Gold Stud Earrings.**  
 Each featuring one emerald-cut emerald weighing approximately 1.00 ct., set in a 14k yellow gold stud mounting. Total emerald weight for the pair is approximately 2.00 cttw.  
 {Gross Weight: 1.0 dwts}

**Estimate:**  
**\$300 / \$500**



293  
**14k Tricolor Gold Bracelet.**  
 The 14k yellow, rose and white gold fancy curb link measuring approximately 11 mm in width, completed by a tongue and groove clasp with figure eight safety and safety chain, forming a 7 3/4 inch bracelet.  
 {Gross Weight: 15.4 dwts}

**Estimate:**  
**\$500 / \$700**



294  
**Peridot, Diamond, 14k Yellow Gold Ring.**  
 Featuring one oval-cut peridot weighing approximately 1.65 ct., flanked by two full-cut diamonds weighing a total of approximately 0.02 cttw., set in a 14k yellow gold mounting.  
 {Size: 8, Gross Weight: 3.3 dwts}

**Estimate:**  
**\$400 / \$600**



**Estimate:**  
\$500 / \$700

295  
**Pair of Diamond, 10k Yellow Gold Hoop Earrings.**  
Each featuring twenty-three full-cut diamonds weighing a total of approximately 0.55 cttw., set in a 10k yellow gold hoop mounting measuring approximately 24 mm. Total diamond weight for the pair is approximately 1.10 cttw. {Gross Weight: 2.6 dwts}



**Estimate:**  
\$800 / \$1,200

300  
**Men's Diamond, 10k Yellow Gold Ring.**  
Featuring one triangular-cut diamond weighing approximately 1.15 ct., set in a 10k yellow gold mounting. {Size: 8 1/2, Gross Weight: 5.1 dwts} Note: Diamond not tested for origin of color.



**Estimate:**  
\$300 / \$500

296  
**Peridot, Diamond, 14k Yellow Gold Ring.**  
Featuring one pear-cut peridot weighing approximately 1.95 ct., accented by fourteen full-cut diamonds weighing a total of approximately 0.05 cttw., set in a 14k yellow gold mounting. {Size: 7 1/4, Gross Weight: 2.1 dwts}



**Estimate:**  
\$300 / \$500

301  
**Smoky Quartz, 14k Yellow Gold Ring.**  
Featuring one emerald-cut smoky quartz weighing approximately 26.95 cts., set in a 14k yellow gold mounting. {Size: 8 1/2, Gross Weight: 7.7 dwts}



**Estimate:**  
\$1,500 / \$2,500

297  
**Pair of Van Cleef & Arpels 18k Yellow Gold "Beehive" Ear Clips.**  
The 18k yellow gold textured beehive motif non-pierced ear clips measuring approximately 30 x 18 mm. {Gross Weight: 24.1 dwts} Note: Inside one earring marked with a plaque "VCA"



**Estimate:**  
\$300 / \$500

302  
**Tiger's Eye Quartz Cameo, 10k Yellow Gold Ring.**  
Featuring one tiger's eye quartz cameo measuring approximately 15 x 12 mm, depicting the profile of a soldier, set in a 10k yellow gold mounting. {Size: 8, Gross Weight: 4.1 dwts}



**Estimate:**  
\$500 / \$700

298  
**Diamond, 18k Yellow Gold Ring.**  
Featuring one round rose-cut diamond weighing approximately 1.15 ct., set in an 18k yellow gold mounting. {Size: 5 3/4, Gross Weight: 1.4 dwts}



**Estimate:**  
\$600 / \$800

303  
**Pair of Tiffany & Co. 14k Yellow Gold Cufflinks.**  
The 14k yellow gold "forever knot" motif cufflinks measuring approximately 13 x 28 mm. {Gross Weight: 13.6 dwts} Note: Signed "Tiffany & Co."



**Estimate:**  
\$800 / \$1,200

299  
**14k Yellow Gold Necklace.**  
The 14k yellow gold fancy link measuring approximately 7.5 mm in width, completed by a tongue and groove clasp with figure eight safety, forming a 16 inch necklace. {Gross Weight: 24.8 dwts}



**Estimate:**  
\$500 / \$700

304  
**Pair of Black Onyx, Yellow Gold Ear Clips.**  
Each centering one oval shaped black onyx cabochon measuring approximately 17.2 x 12.5 mm, set in a twisted 18k yellow gold mounting, completed by non-pierced 14k yellow gold clip backs and measuring approximately 25 x 20 mm. {Gross Weight: 12.5 dwts}



**Estimate:**  
\$300 / \$500

**305  
Men's Black Onyx, 10k Yellow Gold Ring.**

Featuring one rectangular shaped black onyx tablet measuring approximately 18 x 13 mm, set in a 10k yellow gold mounting.  
{Size: 11 1/2, Gross Weight: 4.2 dwts}  
Note: Onyx chipped at two corners.



**Estimate:**  
\$400 / \$600

**309  
Vintage European Diamond, 15k Yellow Gold Ring Semi-Mounting.**

Centering one oval shaped stone setting, flanked by two old European-cut diamonds weighing a total of approximately 0.50 cttw., set in a 15k yellow gold mounting.  
{Size: 5 1/2, Gross Weight: 2.4 dwts}



**Estimate:**  
\$700 / \$900

**306  
Diamond, 14k Yellow Gold Ring Set.**

Featuring one round brilliant-cut diamond weighing approximately 0.80 ct., accented by two full-cut diamonds weighing a total of approximately 0.20 ct., set in a 14k yellow gold branch motif mounting, size 5 1/2 together with a matching diamond, 14k yellow gold branch motif band, size 5 3/4.  
{Gross Weight: 6.7 dwts}



**Estimate:**  
\$300 / \$500

**310  
Bohemian Garnet Jewelry Suite.**

Including a bohemian garnet, silver-gilt crown motif brooch measuring approximately 43 x 51 mm; a pair of bohemian garnet, 14k yellow gold drop earrings measuring approximately 22 mm in length together with a faceted bohemian garnet bead, continuous 72 inch necklace.  
{Gross Weight: 50.7 dwts}



**Estimate:**  
\$700 / \$900

**307  
Black Diamond, 18k Yellow Gold Pendant Necklace.**

Featuring one cushion shaped rose-cut black diamond weighing approximately 5.70 cts., bezel set in an 18k yellow gold mounting, suspended from an 18k yellow gold chain, forming an 18 inch pendant necklace.  
{Gross Weight: 1.7 dwts}



**Estimate:**  
\$400 / \$600

**311  
Diamond, 18k Yellow Gold Ring.**

Featuring six full-cut diamonds weighing a total of approximately 0.55 cttw., set in an 18k yellow gold textured mounting.  
{Size: 7, Gross Weight: 5.9 dwts}



**Estimate:**  
\$300 / \$500

**308  
Men's Diamond, Black Onyx, 10k Yellow Gold Ring.**

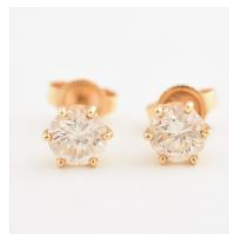
Featuring one transitional round-cut diamond weighing approximately 0.20 ct., accented by one triangular shaped black onyx tablet with a gold "B", set in a 10k yellow gold retro style mounting.  
{Size: 12, Gross Weight: 8.0 dwts}



**Estimate:**  
\$300 / \$500

**312  
Garnet, Diamond, Platinum-Topped, 14k Yellow Gold Stickpin.**

Designed as a pansy, the top two petals composed of pear shaped garnet cabochons, accented by eight rose-cut diamonds, set in a platinum-topped, 14k yellow gold mounting.  
{Gross Weight: 2.0 dwts}



**Estimate:**  
\$500 / \$700

**313  
Pair of Diamond, 14k Yellow Gold Stud Earrings.**

Each featuring one round brilliant-cut diamond weighing approximately 0.50 ct., set in a 14k yellow gold screw back stud mounting. Total diamond weight for the pair is approximately 1.00 cttw.  
{Gross Weight: 0.8 dwts}



**Estimate:**  
\$600 / \$800

**314**  
**Carved Pink Tourmaline, Diamond, 18k Gold Ring.**  
Centering one oval shaped carved pink tourmaline measuring approximately 12 x 9 mm depicting a flower, surrounded by full-cut diamonds weighing a total of approximately 0.75 cttw., set in an 18k yellow gold mounting.  
{Size: 6 3/4, Gross Weight: 2.7 dwts}



**Estimate:**  
\$400 / \$600

**318**  
**Pair of Opal, Diamond, 14k Yellow Gold Earrings.**  
Each featuring one pear shaped opal cabochon measuring approximately 7.2 x 5 mm, surrounded by ten full-cut diamonds weighing a total of approximately 0.30 cttw., set in a 14k yellow gold stud mounting. Total diamond weight for the pair is approximately 0.60 cttw.  
{Gross Weight: 2.0 dwts}



**Estimate:**  
\$1,200 / \$1,600

**315**  
**Pair of Carved Pink Sapphire, Diamond, 14k Gold Earrings.**  
Each featuring a carved pink sapphire cabochon measuring approximately 24 x 20 mm, depicting a flower, accented by round-cut diamonds weighing a total of approximately 0.50 cttw., set in a 14k yellow and white gold mounting measuring approximately 40 mm in length. Total diamond weight for the pair is approximately 1.00 cttw.  
{Gross Weight: 10.4 dwts}



**Estimate:**  
\$300 / \$500

**319**  
**14k Yellow Gold Hummingbird Pendant Necklace.**  
Featuring a 14k yellow gold hummingbird pendant measuring approximately 18 x 23 mm, suspended from a 14k yellow gold chain, completed by a spring ring clasp, forming a 19 inch necklace.  
{Gross Weight: 8.0 dwts}



**Estimate:**  
\$300 / \$500

**316**  
**14k Yellow Gold Erotic Pendant Necklace.**  
Featuring a 14k yellow gold erotic woman with crescent moon pendant measuring approximately 26 x 20 mm, suspended from a 14k yellow gold chain, completed by a spring ring clasp, forming a 20 inch necklace.  
{Gross Weight: 10.3 dwts}



**Estimate:**  
\$300 / \$500

**320**  
**Collection of Two Opal, 14k Yellow Gold Rings.**  
Including one oval shaped opal cabochon, 14k yellow gold ring, size 6 1/2 together with an oval shaped opal cabochon, 14k yellow gold textured open work ring, size 6.  
{Gross Weight: 8.4 dwts}



**Estimate:**  
\$500 / \$700

**317**  
**Diamond, Synthetic Ruby, 14k Rose Gold Ring.**  
Featuring three single-cut diamonds weighing a total of approximately 0.20 cttw., accented by three round-cut synthetic rubies, set in a 14k rose gold flower bouquet motif mounting.  
{Size: 5 1/2, Gross Weight: 3.9 dwts}



**Estimate:**  
\$3,000 / \$5,000

**321**  
**Diamond, Yellow Gold Pendant Necklace.**  
Featuring one pear-cut diamond weighing approximately 2.15 cts., accented by two tapered baguette-cut diamonds weighing a total of approximately 0.15 cttw., set in a 14k yellow gold mounting, suspended from an 18k yellow gold seven strand 18 inch necklace.  
{Gross Weight: 9.5 dwts}



**Estimate:**  
\$2,000 / \$3,000

**322**  
**Buccellati Labradorite, 18k Yellow Gold Fish Pendant Brooch.**  
Featuring a carved labradorite fish measuring approximately 31 x 50 mm, the eye accented by one round-cut pink sapphire, set in an 18k yellow gold water and wave motif pendant brooch mounting measuring approximately 69 x 72 mm. Accompanied by Buccellati New York box.  
{Gross Weight: 24.2 dwts}  
Provenance: From a private Half Moon Bay, CA collection.  
Note: Back signed "Buccellati 18k Italy" with serial no. 18686.



**Estimate:**  
\$400 / \$600

**323**  
**14k Yellow Gold Jewelry Suite.**  
Including a 14k yellow gold fancy woven and heart link measuring approximately 8 mm in width, 7 inch bracelet together with a 14k yellow gold domed and fluted ring, size 7. {Gross Weight: 14.5 dwts}  
Note: Evidence of lead solder at clasp of bracelet.



**Estimate:**  
\$300 / \$500

**324**  
**Multi-Stone, Diamond, 14k Yellow Gold Jewelry Suite.**  
Including a pair of oval-cut garnet, peridot, amethyst, aquamarine, citrine, diamond, 14k yellow gold earrings measuring approximately 26 x 14 mm together with an oval-cut and marquise-cut garnet, 14k yellow gold cluster ring, size 6 3/4. {Gross Weight: 10.0 dwts}



**Estimate:**  
\$700 / \$900

**325**  
**Diamond, 18k Gold, Gold-Filled Bracelet.**  
Featuring eighty-one single-cut diamonds weighing a total of approximately 2.50 cttw., set in an 18k yellow and white gold rosette motif links mounting, extended from a gold-filled link, completed by a fold over clasp with safety chain, forming a 7 inch bracelet.  
{Gross Weight: 17.0 dwts}



**Estimate:**  
\$400 / \$600

**326**  
**Collection of Four Enamel, Synthetic Stone, 10k Yellow Gold Class & Elk's Lodge Rings.**  
Including one Elk's lodge 10k yellow gold ring, size 11 3/4; one 10k yellow gold service ring, size 12; one 10k yellow gold 1951 high school ring, size 6 together with one 10k yellow gold 1955 university ring, size 6. {Gross Weight: 17.6 dwts}



**Estimate:**  
\$700 / \$900

**327**  
**Amethyst, Diamond, 18k Gold Pendant Necklace.**  
Featuring one oval-cut amethyst weighing approximately 25.20 cts., surrounded by round-cut diamonds weighing a total of approximately 0.25 cttw., set in an 18k yellow and white gold mounting measuring approximately 35 x 20 (with bail), suspended from an 18k yellow gold chain, forming an 18 inch necklace. {Gross Weight: 7.5 dwts}



**Estimate:**  
\$300 / \$500

**328**  
**Mabe Cultured Pearl, 14k Yellow Gold, Metal Jewelry Suite.**  
Including one mabe cultured pearl, 14k yellow gold ring, size 7 together with a pair of mabe cultured pearl, 14k yellow gold earrings completed by metal backs. {Gross Weight: 19.3 dwts}  
Note: One mabe pearl earrings cracked and chipped.



**Estimate:**  
\$400 / \$600

**329**  
**Rock Crystal Quartz, Amethyst, 18k Yellow Gold Brooch.**  
Featuring one rock crystal quartz measuring approximately 29 x 9 mm, flanked by two half circle-cut amethysts, further enhanced by two amethyst and two rock crystal quartz finials, set in a retro style 18k yellow gold mounting measuring approximately 39 x 33 mm. {Gross Weight: 11.6 dwts}  
Note: Back marked "CG"



**330**  
**14k Yellow Gold Watch Chain with Locket Fob.**  
 The 14k yellow gold curb link measuring approximately 5 mm in width, suspending a cushion shaped locket fob and measuring approximately 13 inches in length. {Gross Weight: 21.7 dwts}

**Estimate:**  
**\$600 / \$800**



**335**  
**14k Yellow Gold Necklace.**  
 The 14k yellow gold fancy link measuring approximately 2 mm in width, completed by a tongue and groove clasp with figure eight safety, forming a 17 1/2 inch necklace. {Gross Weight: 8.6 dwts}

**Estimate:**  
**\$300 / \$500**



**331**  
**Amethyst, Diamond, 18k Yellow Gold Ring.**  
 Featuring one oval-cut amethyst weighing approximately 12.35 cts., accented by six full-cut diamonds weighing a total of approximately 0.45 cttw., set in an 18k yellow gold mounting. {Size (with sizer balls): 3 1/2, Gross Weight: 8.3 dwts}

**Estimate:**  
**\$500 / \$700**



**336**  
**\*Coral, Diamond, 14k Yellow Gold Pendant.**  
 Featuring one egg shaped coral cabochon measuring approximately 13.4 x 9.3 mm, accented by four full-cut diamonds weighing a total of approximately 0.10 cttw., set in a 14k yellow gold mounting. {Gross Weight: 1.4 dwts}

**Estimate:**  
**\$400 / \$600**



**332**  
**Amethyst, 14k Yellow Gold Jewelry Suite.**  
 Including one oval-cut amethyst, 14k yellow gold pendant measuring approximately 25 x 15 mm together with a pair of oval-cut amethyst, 14k yellow gold drop earrings measuring approximately 30 mm in length. {Gross Weight: 5.4 dwts}

**Estimate:**  
**\$300 / \$500**



**337**  
**\*Coral, 14k Yellow Gold Jewelry Suite.**  
 Including a 3.8 mm coral bead, 14k yellow gold 15 inch necklace together with an elongated oval shaped coral cabochon measuring approximately 23 x 11 mm, 14k yellow gold ring, size 5 1/2. {Gross Weight: 3.9 dwts}

**Estimate:**  
**\$300 / \$500**



**333**  
**14k Yellow Gold Bracelet.**  
 The 14k yellow gold fancy leaf motif link measuring approximately 14 mm in width, completed by a tongue and groove clasp with figure eight safety, forming a 7 1/2 inch bracelet. {Gross Weight: 11.1 dwts}

**Estimate:**  
**\$400 / \$600**



**338**  
**14k Yellow Gold Jewelry Suite.**  
 Including one 14k yellow gold twisted link measuring approximately 6 mm in width, completed by a spring ring clasp, forming a 7 3/4 inch bracelet together with a dos pesos gold coin, 14k yellow gold ring, size 7. {Gross Weight: 9.8 dwts}

**Estimate:**  
**\$300 / \$500**



**334**  
**\*Coral, Diamond, 14k Gold Ring.**  
 Featuring one round coral bead measuring approximately 7.6 mm, flanked by two full-cut diamonds weighing a total of approximately 0.04 cttw., set in a 14k yellow and white gold mounting. {Size: 6 3/4, Gross Weight: 2.6 dwts}

**Estimate:**  
**\$400 / \$600**



**339**  
**\*Collection of Two Carved Coral, Turquoise, Yellow Gold Brooches.**  
 Including one small round turquoise cabochon, 18k yellow gold overlapping triangular shaped brooch measuring approximately 28 x 33 mm together with a carved coral flower, 14k yellow gold brooch measuring approximately 27 x 41 mm. {Gross Weight: 11.4 dwts}

**Estimate:**  
**\$400 / \$600**





340  
**\*Coral, Freshwater Cultured Pearl, 14k Yellow Gold Ring.**  
 Featuring one oval shaped coral cabochon measuring approximately 14 x 10.2 mm, accented by four freshwater cultured pearls, set in a 14k yellow gold textured branch motif mounting.  
 {Size: 6 1/2, Gross Weight: 10.1 dwts}

**Estimate:**  
**\$300 / \$500**



344  
**Collection of Two Jade, Garnet, Chalcedony, Gold Necklaces.**  
 Including one garnet disc bead, 14k yellow gold fluted barrel bead, 30 inch necklace together with one round jade bead, dyed green chalcedony, 18k yellow gold, 14k yellow gold fluted bead, 25 inch necklace.  
 {Gross Weight: 109.3 dwts}

**Estimate:**  
**\$300 / \$500**



341  
**Pair of Biwa Pearl, 14k Yellow Gold Earrings.**  
 Each featuring four biwa pearls measuring approximately 8.2 x 5.3 mm, set in a 14k yellow gold leaf motif mounting measuring approximately 39 mm in length.  
 {Gross Weight: 3.2 dwts}

**Estimate:**  
**\$400 / \$600**



345  
**Cultured Pearl, 14k Yellow Gold Jewelry Suite.**  
 Including one cultured pearl, 14k yellow gold ring, size 7 3/4 together with a cultured pearl, 14k yellow gold two strand 6 3/4 inch bracelet.  
 {Gross Weight: 14.5 dwts}

**Estimate:**  
**\$300 / \$500**



342  
**Jade, 14k Yellow Gold Jewelry Suite.**  
 Including one jadeite jade, 14k yellow gold 7 inch bracelet together with a multicolored jade, 14k yellow gold cluster ring, size 6.  
 {Gross Weight: 20.3 dwts}

**Estimate:**  
**\$300 / \$500**



346  
**Collection of Two Jade, Cultured Pearl, Diamond, Yellow Gold Rings.**  
 Including a jade, diamond, 14k yellow gold ring, size 7 3/4 together with a cultured pearl, 10k yellow gold calla lily motif ring, size 7 1/4.  
 {Gross Weight: 3.7 dwts}  
 Note: One cultured pearl missing.

**Estimate:**  
**\$300 / \$500**



343  
**Pair of Cellino Mabe Cultured Pearl, Diamond, 14k Yellow Gold Ear Clips.**  
 Each centering one round mabe cultured pearl measuring approximately 16 mm, accented by three round brilliant-cut diamonds weighing a total of approximately 0.20 cttw., set in an 18k yellow gold non-pierced ear clip mounting measuring approximately 24 mm. Total diamond weight for the pair is approximately 0.40 cttw.  
 {Gross Weight: 13.4 dwts}

**Estimate:**  
**\$300 / \$500**



347  
**18k Yellow Gold Nugget Motif Pendant.**  
 The 18k yellow gold nugget motif pendant measuring approximately 27 x 19 mm, completed by a ring bail.  
 {Gross Weight: 9.2 dwts}

**Estimate:**  
**\$300 / \$500**



348  
**Pair of Jadeite Jade, 14k Yellow Gold Drop Earrings.**  
 Each featuring one jadeite jade drop measuring approximately 13 x 6 mm, suspended from an articulated 14k yellow gold non-pierced screw back mounting measuring approximately 28 mm in length.  
 {Gross Weight: 1.9 dwts}

**Estimate:**  
**\$400 / \$600**



349  
**14k Yellow Gold Neck Chain.**  
 The 14k yellow gold anchor link measuring approximately 5 mm in width, completed by a spring ring clasp, forming a 20 inch neck chain. {Gross Weight: 12.3 dwts}

**Estimate:**  
**\$400 / \$600**



350  
**Jadeite Jade, 14k Yellow Gold Ring.**  
 Featuring one oval shaped jadeite jade cabochon measuring approximately 13.9 x 9.5 mm, set in a 14k yellow gold mounting. {Size: 5 1/2, Gross Weight: 1.6 dwts}

**Estimate:**  
**\$1,000 / \$1,500**



351  
**Hilton 14k Yellow Gold Wristwatch.**  
 DIAL: Square, cream, gold Arabic and index hour markers, gold baton hands, Hilton, 17 Jewels Incabloc, Swiss. MOVEMENT: Manual wind, seventeen (17) jewels, unadjusted, Hilton Watch Co., Swiss. CASE: Rectangle, 14k yellow gold, snapback, 19 x 14 mm. BRACELET: 14k yellow gold, brick link measuring approximately 13 mm in width, fold over clasp, 7 inches. {Gross Weight: 21.3 dwts}

**Estimate:**  
**\$500 / \$700**



352  
**Ladies Omega 18k Yellow Gold Cuff Wristwatch.**  
 DIAL: Round, silver, gold index hour markers, gold baton hands, Omega. MOVEMENT: Not opened. CASE: Round, 18k yellow gold, snapback, engine turn pattern, 15 mm. BRACELET: 18k yellow gold, double hinged cuff, tapering from 8 mm to 6 mm, 49 mm in diameter. {Gross Weight: 14.7 dwts}

**Estimate:**  
**\$400 / \$600**



**Estimate:**  
**\$300 / \$500**

353  
**Waltham 14k Yellow Gold Pocket Watch.**  
 DIAL: Round, white, black Roman numeral hour markers, black outer minutes track, red outer five numeral interval markers, sunken subsidiary seconds dial at 6 o'clock, blued spade hands, Waltham. MOVEMENT: Manual wind, fifteen (15) jewels, safety barrel, 9806152, American Waltham Watch Co. CASE: Round, 14k yellow gold, hunting case (missing front cover), back featuring a floral motif engraving, 14k yellow gold cuvette, 39 mm. {Gross Weight: 27.8 dwts} Note: Front case missing, back case worn, back cracked and dented.



**Estimate:**  
**\$800 / \$1,200**

354  
**Hamilton 14k Pink Gold Open Face Pocket Watch.**  
 DIAL: Round, white, black Arabic numeral hour markers, black outer minutes track, outer red five numeral interval markers, sunken subsidiary seconds dial at 6 o'clock, black spade hands, Hamilton. MOVEMENT: Manual wind, nineteen (19) jewels, adjusted five (5) positions, 753370, motor barrel 952, Hamilton Watch Co., Lancaster, PA. CASE: 14k pink gold, open face, engine turn motif, 165743, A.W.C. Co., 14k gold cuvette no. 165743, 50 mm. {Gross Weight: 65.2 dwts} Note: Hairlines to dial.



**Estimate:**  
**\$800 / \$1,200**

355  
**Longines 18k Yellow Gold Pocket Watch**  
 DIAL: Round, white, black stylized Roman numeral hour markers, black outer minutes track, sunken subsidiary seconds dial at 6 o'clock, gold brequet moon hands, Longines. MOVEMENT: Manual wind, jeweled, 3707194. CASE: 18k yellow gold, hunting case, 3707194, 18k yellow gold cuvette no. 3707194, Longines 7 Grands Prix, 54 mm. {Gross Weight: 62.0 dwts} Note: Numerous hairlines to dial, some chipping at 10 o'clock, case dented.



**Estimate:**  
\$600 / \$800

356  
**Elgin 18k Yellow Gold Pocket Watch.**  
DIAL: Round, white, black Roman numeral hour markers, black outer minutes track, sunken subsidiary seconds dial at 6 o'clock, blued spade hands, Elgin. MOVEMENT: Manual wind, S16677, Elgin Nat'l. Watch Co. CASE: 18k yellow gold, hunting case, engraved partially scalloped border, 129887, yellow gold cuvette no. 129887 and engraved "Paul Love Always Teddy." {Gross Weight: 49.1 dwts} Note: Cuvette hinge broken, spring and pin missing.



**Estimate:**  
\$400 / \$500

361  
**Lot of Two (2) Gold Coins 1873 Australian Sovereign and Guatemala 1864 4 Reales**



**Estimate:**  
\$300 / \$500

357  
**Elgin Art Nouveau Diamond, 18k Yellow Gold Pendant Watch.**  
DIAL: Round, cream, stylized black Arabic numeral hour markers, black outer minutes track, sunken subsidiary seconds dial at 6 o'clock, Elgin. MOVEMENT: Manual wind, fifteen (15) rubis, 33060532, Elgin U. S.A. CASE: 18k yellow gold, hunting case, embossed floral motif featuring eleven rose-cut diamonds, 052, 223052, 18k yellow gold cuvette no. 223052, Angre Levees Visibles, 15 Rubis, Double Plateau, metal bail, 31 mm. {Gross Weight: 18.2 dwts}



**Estimate:**  
\$1,400 / \$1,800

362  
**US 1883 Half Dollar Proof Cameo**



**Estimate:**  
\$1,500 / \$1,800

363  
**Lot of Five (5) Australian Sovereign All Perth (P) Mint 1901, 1914, 1915, 1919 and 1923**



**Estimate:**  
\$300 / \$500

358  
**Tiffany & Co. Stainless Steel Wristwatch.**  
DIAL: Round, white, black Roman numeral hour markers, black outer minutes track, aperture for date at 3 o'clock, black center sweep seconds hand, black baton hands, Tiffany & Co., Swiss made. MOVEMENT: Quartz battery. CASE: Rounded barrel, four lugs, stainless steel, snapback, Tiffany & Co. France, 33 mm. BRACELET: Stainless steel, jubilee link 18 to 16 mm, double deployant clasp, 7 inches. Accompanied by Tiffany & Co. boxes. {Gross Weight: 40.5 dwts}



**Estimate:**  
\$1,000 / \$1,200

364  
**Lot of Three (3) Australian Sovereign Gold Coins all Melbourne Mint 1879, 1881 and 1885**



**Estimate:**  
\$1,800 / \$2,000

365  
**Lot of Six (6) Australian Sovereign Gold Coins 1889, 1892, 1893, 1894, 1895 and 1899 all Melbourne Mint**



366  
**US Lot of 12 1922 Peace Dollars BU Condition**

**Estimate:**  
**\$300 / \$400**



376  
**Two Chinese Snuff Bottles.**  
Comprising a porcelain bottle with landscape painting and glass enameled bottle.  
{Heights: 3 1/8 & 2 1/2 inches (8 & 6.4 cm)}.

**Estimate:**  
**\$400 / \$600**



367  
**US Lot of 38 Morgan and Peace Dollars Common Dates, Mixed Condition**

**Estimate:**  
**\$550 / \$650**



377  
**Agate Snuff Bottle.**  
(Height: approximately 2 3/8 inches (6 cm)).

**Estimate:**  
**\$400 / \$600**



368  
**US Lot of Proof Sets (30) 1961-6; 1962-7; 1963-9 and 1964-8**

**Estimate:**  
**\$400 / \$500**



378  
**Red Agate Snuff Bottle.**  
(Height: approximately 2 3/8 inches (6 cm)).

**Estimate:**  
**\$400 / \$600**



369  
**US Collection of 53 Morgan Dollars Common Dates, Mixed Condition**

**Estimate:**  
**\$800 / \$1,000**



379  
**Large Chinese Jade Snuff Bottle with Stand.**  
Well hollowed, the large ovoid bottle supported by a recessed foot, carved taotie mask rings on the sides, the stone with a russet skin, carved fitted rosewood stand.  
{Height: Approximately 3 1/2 inches (8.9 cm)}.

**Estimate:**  
**\$400 / \$600**



370  
**US Collection of 19 ANACS Graded Coins Including Morgan-12; Peace Dollars-1 All MS; 2 Cent-1; 1908(S)-1 Cent; 1846(O) 50 Cent; 1867 Half Dime; 1952-25 Cent-2**

**Estimate:**  
**\$600 / \$700**



380  
**Four Chinese Archaistic Russet Jade Pendants.**  
{Length of the largest: approximately 2 3/8 inches (6 cm)}.

**Estimate:**  
**\$400 / \$600**



381  
**Pair of Chinese White Jade Dragon Pendants.**  
{Diameter: approximately 2 inches (5.1 cm)}.

**Estimate:**  
**\$1,000 / \$2,000**



382  
**Chinese White Jade Pendant in Gilt Metal Frame.**  
{Height: approximately 4 inches (10.2 cm)}.

**Estimate:**  
**\$1,000 / \$2,000**



383  
**Chinese Carved Jadeite Peach & Dragon Pendant.**  
{Length: 2 1/2 inches (6.4 cm) approximately}.

**Estimate:**  
**\$500 / \$700**



384  
**Chinese Spinach Jadeite Cup.**  
{Height: 2 1/2 inches (6.4 cm)}.

**Estimate:**  
**\$400 / \$600**



385  
**Group of Chinese Jade Accessories.**  
Comprising ten hardstone and jade archer's rings, an archaic bangle, and four soapstone seals.  
{Diameter of bangle: 3 inches (7.6 cm)}.

**Estimate:**  
**\$300 / \$500**



386  
**Two Chinese Carved Soapstone Seals.**  
The first of tall square shape, the side carved in shallow relief to depict flowers and rockery, the stone of orange brown color; the second of rectangular shape, the seal face carved and the stone of mottled brown and orange color.  
{Height of the tallest: approximately 3 5/8 inches (9.2 cm)}.

**Estimate:**  
**\$500 / \$700**



387  
**Group of Chinese of Carved Stone Table Decorations.**  
Including jade, amethyst, turquoise and bi disc.  
{Tallest: 3 1/4 inches (8.3 cm)}.

**Estimate:**  
**\$400 / \$600**



388  
**Two Chinese Hardstone Carvings of Guanyin.**  
{Height of the taller: approximately 6 1/2 inches (16.5 cm)}.

**Estimate:**  
**\$400 / \$600**



389  
**Group of Chinese Carved Walnuts and a Bracelet.**  
{Diameter of the walnut: approximately 2 1/2 inches (6.4 cm)}.

**Estimate:**  
**\$300 / \$500**



390  
**Chinese Aloeswood Chenxiangmu Rosary Bracelet.**  
The eighteen beads each separated by mixed metal spacers, each bead with four tiny gilt bead "shui" symbols embellishment.  
{Length: approximately 15 1/2 inches (40 cm)}.

**Estimate:**  
**\$1,000 / \$1,500**



**Estimate:**  
**\$400 / \$600**

391  
**Two Chinese Carved Bamboo Brush Holders.**  
{Height of the taller: approximately 9 inches with base (22.9 cm)}.



**Estimate:**  
**\$1,500 / \$2,000**

395  
**Chinese Carved Aloeswood Wall Vase with Base.**  
Naturalistically carved as a flattened "Hu" vase with gnarled knots, decorated in the front with a cartouche panel relief carved with a poem signed with two seals, all with an overhanging pine tree above and bamboo emerging from below, the dense grain of the wood with a rustic brownish hue, together with a pierced openwork wood stand. {Height without base: approximately 7 1/4 inches}.



**Estimate:**  
**\$400 / \$600**

392  
**Five Chinese Bamboo Brush Holders.**  
{Height of the tallest: approximately 6 3/8 inches (16.2 cm)}.



396  
**Group of Chinese Carved Ox Bone Items.**  
{Height of the tallest: approximately 14 3/8 inches (36.5 cm)}.

**Estimate:**  
**\$400 / \$600**



**Estimate:**  
**\$1,000 / \$2,000**

393  
**Chinese Lingbi Stone Scholar's Rock on Carved Base.**  
Of vertical orientation branching into large protuberances, the stone of dark gray tone with various gray striations, the surface highly polished, with carved fitted hardwood base. {Height: 24 3/4 inches (63 cm) approximately}.



**Estimate:**  
**\$600 / \$800**

397  
**Chinese Carved Rosewood Table Screen with Dragon Motif.**  
{20 1/2 x 27 inches (52 x 68.6 cm)}.



**Estimate:**  
**\$1,000 / \$1,500**

394  
**Chinese Aloeswood Scholar's Rock with Carved Base.**  
{Height: 23 inches (58.4 cm) including stand}.



**Estimate:**  
**\$400 / \$600**

398  
**Three Heavily Carved Chinese Display Stands.**  
{Height of the tallest: approximately 9 7/8 inches (25 cm)}.



399  
**Group of Wood Display Stands and Bases.**  
{Height of the tallest: approximately 6 1/2 inches}.

**Estimate:**  
**\$300 / \$500**



400  
**Large Chinese Gilt Lacquered Wood Figure of Buddha.**  
Portrayed seated in dhyanasana, the hands held in dhyanamudra, wearing long flowing robes over his shoulders, tied at the chest, cascading over his legs, the face set with a contemplative expression, flanked by pendulous ears, the hair arranged in tight curls and top with a knot.  
{Height: 27 inches (68.6 cm) approximately}.

**Estimate:**  
**\$4,000 / \$6,000**



401  
**Burmese Carved and Gilt Wood Buddha Statue.**  
The black and gilt-color lacquered seated Buddha with lotus position, both hands resting in his lap, with quite and joyful facial expression, with a large lacquer wood base.  
{Height of the Buddha: approximately 26 1/2 inches (67.3 cm) excluding base}.  
[Age related wear to the gilt].

**Estimate:**  
**\$400 / \$600**



402  
**Pair of Chinese Painted Wall Hanging Panels with Warrior Scenes.**  
{69 x 22 inches (175.3 x 56 cm) each}.

**Estimate:**  
**\$400 / \$600**



403  
**Large Chinese Carved Temple Panel.**  
Carved in deep relief with a pair phoenix among blossoming peony branches, all on a diaper ground set within an elaborated wooden double frame.  
{43 x 53 inches (110 x 134.6 cm)}.

**Estimate:**  
**\$400 / \$600**



404  
**Chinese Four Panel Hardwood Floor Screen.**  
Each vertical panel comprised of three framed sections, each inset with three polychrome enameled plaques, the section depicting birds and flowers, the middle section depicting figures, and the lower section depicting landscape.  
{71 3/4 x 68 inches (182.2 x 172.7 cm)}.

**Estimate:**  
**\$1,200 / \$1,800**



405  
**Chinese Carved Six-Panel Boxwood and Hardwood Screen.**  
{39 3/8 x 39 inches (100 x 99 cm)}.

**Estimate:**  
**\$300 / \$500**



406  
**Chinese Hardwood Desk with Two Drawers.**  
{31 x 38 x 20 inches (78.7 x 96.5 x 50.8 cm)}.

**Estimate:**  
**\$300 / \$500**



407  
**Chinese Rosewood Altar Table.**  
{38 x 60 x 17 inches (96.5 x 152.4 x 43.2 cm) approximately}.

**Estimate:**  
**\$400 / \$600**



**Estimate:**  
\$5,000 / \$8,000

**408  
Chinese Export Rosewood  
Demi-Lune Table with Back  
Panel.**  
The semicircular top inset with pink marble panel, decorated with a wide foliate open work apron and raised on four paw-form feet joined with stretchers, the back rest further decorated with foliate open work. {51 x 36 x 21 inches (130 x 91.4 x 53.3 cm) approximately}.



**Estimate:**  
\$800 / \$1,200

**412  
Chinese Export Rosewood  
Revolving Pedestal Table.**  
The revolving circular table supported on a three-legged stand elaborately carved and with figures, the circular top with an openwork apron, inset with a pink striated marble panel. {Height: 32 1/2 inches (82.6 cm); Diameter: 32 1/2 inches (82.6 cm)}.



**Estimate:**  
\$3,000 / \$5,000

**409  
Large Chinese Rosewood  
Painting Table with Drawers.**  
The single-board top set into a mitered, mortise and tenon frame suspending a central drawer accessible on each side framed by open-work c-shaped spandrels repeated as the base under paired transverse stretchers. {33 x 53 1/4 x 26in (83.8 x 135 x 66cm)}. [Age related wear].



**Estimate:**  
\$500 / \$700

**413  
Pair of Chinese Famille Rose  
Garden Stools.**  
Each of barrel form decorated with the floral design, all between bands of ruyi pendant below the seat and lappet panel around the base with raised bosses, the top and sides pierced with double-coin motifs. {Height: 19 1/4 inches (49 cm) each}.



**Estimate:**  
\$600 / \$800

**410  
Chinese Rosewood Mother-of-  
Pearl Inlaid Demi Lune Table  
and Chair.**  
{Table: 32 1/2 x 34 x 17 inches (82.6 x 86.4 x 43.2 cm); Chair: 39 x 25 1/4 x 19 inches (99 x 64.2 x 48.3 cm) approximately}.



**Estimate:**  
\$400 / \$600

**414  
Pair of Chinese Rosewood  
Armchairs.**  
Carved with auspicious symbols. {37 1/2 x 25 x 19 inches (95.3 x 63.5 x 48.3 cm)}. [One arm detached].



**Estimate:**  
\$300 / \$500

**411  
Chinese Rosewood Kang  
Table with Dragon Motif.**  
{8 1/2 x 39 3/4 x 16 1/4 inches (21.6 x 101 x 41.3 cm)}. [Wear, aged cracks].



**Estimate:**  
\$600 / \$800

**415  
Chinese Rosewood Sofa with  
Inscriptions.**  
{33 x 67 x 22 inches (83.8 x 170.2 x 56 cm)}.



**Estimate:**  
\$3,000 / \$5,000

**416  
Chinese Heavily Carved  
Rosewood Storage Chest.**  
{18 x 33 3/4 x 18 inches (45.7 x 85.7 x 45.7 cm)}.





417  
**Pair of Chinese Hanging Lanterns.**  
With reverse glass painted panels of landscape scenes.  
{Height: 22 inches (56 cm) approximately}.

**Estimate:**  
**\$200 / \$300**



422  
**Pair of Chinese Cloisonne Winged Horses.**  
Each on the rectangle wood stands.  
{Width: 12 inches (30.5 cm) each approximately}.

**Estimate:**  
**\$500 / \$750**



418  
**Chinese Carved Marble Figure of Bodhisattva on Lotus Base.**  
{Height: 15 inches (38 cm)}.

**Estimate:**  
**\$1,000 / \$1,600**



423  
**Chinese Cloisonne Gilt Metal Demi-Lune Clock.**  
The elaborate case combining gilt metal and cloisonné enameled sections worked in pale colors on a soft sky blue enamel ground, the circular pendulum weight also enameled in pale colors with a depiction classic figures in scenery; the clock housing mounted with beveled glass walls and doors.  
{Width: 4 inches (10.2 cm)}.  
[Wear to gilt, not guaranteed mechanic work on the clock].

**Estimate:**  
**\$300 / \$400**



419  
**Large Thai Bronze Reclining Goddess Figure with Crown.**  
{Length: 57 inches (145 cm) approximately}.

**Estimate:**  
**\$300 / \$500**



424  
**Chinese Cloisonné Hardstone Flower Pot and Two Small Vases.**  
Comprising a coral and spinach jade tree set in a hexagonal cloisonné flower pot and a pair of small cloisonné floral copper vases.  
{Height of the flower tree: approximately 15 1/2 inches (39.4 cm); Height of the vases: 5 1/4 inches (13.3 cm) each}.

**Estimate:**  
**\$300 / \$500**



420  
**Large Thai Gilt Bronze Seated Buddha.**  
The deity cast seated in dhyanasana, with the slender body clad in loose robes, the serene facial impression, flanked by long ears, the head with 'snail-curl' hair and crowned with high ushnisha with a flame finial, raised on a plain plinth.  
{Height: 66 inches (167.6 cm) approximately}.

**Estimate:**  
**\$1,000 / \$1,500**



425  
**Pair of Chinese Cloisonné Mandarin Duck Form Vessels.**  
Each mandarin duck standing in mirror image, with the heads turned to left and right, with turquoise bodies and brightly colored plumage, with lotus form lids.  
{Width: 8 inches (20.3 cm)}.

**Estimate:**  
**\$600 / \$800**



421  
**Chinese Archaistic Bronze Tripod Censer.**  
{Height: Approximately 4 1/2 inches (11.4 cm)}.

**Estimate:**  
**\$300 / \$500**



426  
**Set of Three Chinese Cast Bronze Star Gods.**  
Depicting three immortals, Fu, Lu and Shou; accompanied by their respective attributes, each wear elaborate robes.  
{Height: 16 inches (40.6 cm) each approximately}.

**Estimate:**  
**\$750 / \$1,200**



431  
**Large Sino-Tibetan Gilt Bronze Bodhisattva on Double Lotus Base.**

The female Bodhisattva seated in dhyanasane atop a double lotus pedestal, the left hand resting in vitarka mudra, the serene face framed by a foliate tiara, the body adorned with various jewelry, together with a large Japanese lacquer wood stand.  
{Height of the statue: approximately 22 inches (56 cm); Height of the lacquer stand: approximately 10 inches (25.4 cm)}.

**Estimate:**  
**\$1,000 / \$1,500**



427  
**Four Tibetan Cloisonné Articles and a Gilt Metal Filigree Box.**  
{Height of the box: approximately 3 3/8 inches}.

**Estimate:**  
**\$300 / \$400**



432  
**Southeast Asian Silver Plate Buddha Head on Stand.**  
Large Indonesian Java style Buddha head on fitted stand.  
{Height of the head: approximately 13 inches (33 m)}.

**Estimate:**  
**\$300 / \$500**



428  
**Tibetan Gilt Buddhist Ritual Implement.**  
{Height: approximately 8 3/4 inches (22.2 cm)}.

**Estimate:**  
**\$400 / \$600**



433  
**Chinese Embroidered Rank Badge.**  
Framed and glazed.  
{14 x 14 inches (35.6 x 35.6 cm)}.

**Estimate:**  
**\$400 / \$600**



429  
**Four Nepalese Silver Metal Articles with Turquoise and Coral Mounts.**  
{Length of Vajra: 11 inches (28 cm)}.

**Estimate:**  
**\$400 / \$600**



434  
**Set of Six Framed Mandarin Rank Badges.**  
{10 1/2 x 12 inches (26.7 x 57.2 cm) each excluding frame}.

**Estimate:**  
**\$400 / \$600**



430  
**Sino-Tibetan Bronze Statue of a Deity.**  
The wrathful deity wears a crown of skulls, stepping on a female body under in archer, he holds a vajra and lasso, with separately cast double lotus dais and fiery nimbus.  
{Height: approximately 5 1/2 inches (14 cm)}.

**Estimate:**  
**\$800 / \$1,000**



435  
**Chinese Red Ground Embroidered Silk Panel.**  
 {27 1/2 x 56 1/2 inches (70 x 143.5 cm)}.

**Estimate:**  
**\$300 / \$500**



439  
**Attributed to Qiu Ying (1494 -1552): Landscape.**  
 Hanging scroll, ink and color on silk, signed with one seal; and with two colophons.  
 {41 1/4 x 18 inches (104.8 x 45.7 cm)}.  
 [Repair to the lower right corner, fading and toning, creasing].

**Estimate:**  
**\$2,000 / \$3,000**



436  
**Two Chinese Embroidered Vests.**  
 19th Century.  
 {Length of the longest: 44 inches (111.8 cm)}.

**Estimate:**  
**\$1,000 / \$1,500**



440  
**Attributed Ding Yunpeng (1547 -1628): Luohan and Children.**  
 Hanging scroll, ink and color on silk, signed with three seals.  
 {25 1/2 x 15 1/4 inches (64.8 x 38.7 cm)}.  
 [Tears, worm holes, losses, fading and toning].

**Estimate:**  
**\$2,000 / \$3,000**



437  
**Two Chinese Silk Embroidered Pleated Skirts.**  
 19th Century.  
 The first is a multi color silk, all folded and sewn into tiny pleats, edges embroider with scenes of birds and flowers, two rectangle embroidered with figures, birds and butterflies; the scene is a peach ground, embroidered phoenixes, small bats and flowers, part of the skirt folded and sawn with pleats.  
 {Height: 25 inches (63.5 cm) each approximately}.  
 [Both skirts had been shorten and altered].

**Estimate:**  
**\$400 / \$600**



441  
**Attributed to Bada Shanren (born Zhu Da; c. 1626-1705): Fish.**  
 Hanging scroll, ink on paper, signed with three seals.  
 {26 3/4 x 18 1/4 inches (68 x 46.4 cm)}.  
 [Tear, losses, possibly trimmed].

**Estimate:**  
**\$1,000 / \$2,000**



438  
**Attributed to Wang Yuan Ruoshui (13 - 14th C.): Rooster and Ducks.**  
 Mounted scroll, ink and color on silk, signed with one seal.  
 {Image: 40 x 21 inches (101.6 x 53.3 cm); Frame: 52 1/2 x 32 1/2 inches (133.4 x 82.6 cm)}.

**Estimate:**  
**\$800 / \$1,200**



442  
**Attributed to Wu Shixian (1845 -1916): Landscape.**  
 Hanging scroll, ink and color on paper, inscribed, signed with two red seals.  
 {Painting size approximately 33 inches x 13 1/4"}.

**Estimate:**  
**\$400 / \$600**



443  
**Attributed to Kang Youwei (1858-1927): Calligraphy.**  
 Hanging scroll, ink on paper, signed with four seals.  
 {45 3/4 x 15 inches (116.2 x 38 cm)}.  
 [Creasing].

**Estimate:**  
**\$1,000 / \$2,000**



444  
**Attributed to Wu Hufan (1894 -1968): Landscape.**  
Hanging scroll, in and color on paper, inscribed, bearing a signature and two seals.  
{35 x 16 1/2 inches (89 x 42 cm)}.

**Estimate:**  
**\$600 / \$900**



449  
**Attributed to Xu Bangda (1911 -2012): Landscape.**  
Hanging scroll, ink and color on paper, dated, inscribed, bearing a signature and two seals.  
{52 1/2 x 22 inches (133.3 x 55.8 cm)}.

**Estimate:**  
**\$3,000 / \$4,000**



445  
**Attributed to Pu Ru (1896 -1963): Landscape.**  
Mounted scroll, ink on paper, inscribed, signed with three seals.  
{25 3/4 x 7 3/4 inches (65.4 x 20 cm)}.  
[Extensive creasing, staining].

**Estimate:**  
**\$400 / \$600**



450  
**Attributed to Huang Zhou (1925-1997): Dancers.**  
Unmounted scroll, ink and color on paper, dated, inscribed, signed with one seal.  
{27 x 17 3/4 inches (68.6 x 45 cm)}.  
[Creasing].

**Estimate:**  
**\$400 / \$600**



446  
**In the Manner of Zhang Daqian (1899-1983): Medicine Master**  
Hanging scroll, ink and color on paper, inscribed, signed with two seals.  
{41 1/2 x 25 inches (105.4 x 63.5 cm)}.

**Estimate:**  
**\$600 / \$800**



451  
**Attributed to Wu Yingyang (B. 1936): Street Scene.**  
Watercolor, signed in Chinese to the lower left corner, framed and glazed.  
{Image: 20 x 14 1/4 inches (50.8 x 36.2 cm) approximately}.

**Estimate:**  
**\$400 / \$600**



447  
**Attributed to Lu Yanshao (1909 -1993): Landscape.**  
Hanging Scroll, ink and color on paper, inscribed with two red seal marks.  
{Approximately 37 x 18 1/2 inches (94 x 47 cm)}.

**Estimate:**  
**\$600 / \$900**



452  
**Tibetan Painted Thangka.**  
{16 1/2 x 12 inches (41.9 x 30.5 cm)}.  
[Creasing, losses, abrasions].

**Estimate:**  
**\$300 / \$500**



448  
**After Lu Yanshao (1909-1993): Landscape.**  
Mounted horizontal scroll, ink and color on paper, dated, signed with three seals.  
{12 1/2 x 51 1/4 inches (31.8 x 130.2 cm)}.  
[Creasing, foxing, staining].

**Estimate:**  
**\$1,000 / \$2,000**



**Estimate:**  
**\$800 / \$1,200**

**453**  
**Large Chinese Green Glazed Pottery Vessel.**  
Han Dynasty or later.  
Potted with a cupped rim, wide neck and angular body enhanced with raised horizontal string bands and a pair of Taotie mock animal mask and ring handles on the shoulders, the green lead glaze with large patches of silver iridescence.

{Height: Approximately 19 inches (48.3 cm)}.



**Estimate:**  
**\$1,000 / \$1,500**

**456**  
**Chinese Ding-Type Carved 'Peony' Dish.**  
The curved sides flaring to a wide rim and supported on a short straight foot, crisply molded to the interior with an intricate leafy peony blossom, enclosed by a band of florets, covered overall in a translucent ivory white glaze subtly pooling in the recesses with characteristic teardrops on the underside, the rim gilt metal bound. {Width: 8 3/8 inches (21.3 cm)}.  
Provenance:  
Property from the collection of Professor E.T. Hall, Portland, Oregon.



**Estimate:**  
**\$400 / \$600**

**454**  
**Two Chinese Ding Type Ewers.**  
{Height of the taller: Approximately 15 inches (38 cm)}.



**Estimate:**  
**\$400 / \$600**

**457**  
**Chinese Ding Type Glazed Urn.**  
{Height: 4 1/4 inches (10.8 cm)}.



**Estimate:**  
**\$1,800 / \$2,500**

**455**  
**Chinese Ding-Type Fish Form Bottle Vase.**  
Of rounded ovoid body with a wide pedestal foot and a rounded mouth rim, the scaled body carved with raised eyes and fins on either side, the wide foot carved with raised bands simulating fish tail, covered overall with a white ivory glaze, the unglazed recessed foot revealing the white buff body, the mouth and footrim now bound with gold mounts. {Height: 7 1/4 inches (18.4 cm)}.  
Provenance:  
Collection of Dr. Reri Fujimura, Berkeley, California.



**Estimate:**  
**\$1,000 / \$1,500**

**458**  
**Chinese Jizhou Black Glazed 'Spotted' Ewer.**  
The baluster body rising to a waisted neck to a wide flaring rim, set to one side with a slender curved spout opposite a strap handle mounted from the shoulder to the neck, covered overall with a brownish-black glaze decorated all over with star-like amber spots, the glaze stopping neatly at the foot revealing the buff body. {Height: 11 inches (28 cm)}.  
Provenance:  
Property from the collection of Professor E.T. Hall, Portland, Oregon.



**Estimate:**  
\$1,200 / \$1,800

459  
**Chinese Jizhou Black Glazed Buff-Spotted Meiping Vase.**  
Of baluster body with a broad shoulder surmounted with a short neck with a rolled lip rim, covered with a brownish black glaze suffused all over with concentric rows of buff colored star-like spots with pale bluish tint, the glaze stopping at the foot, revealing the buff stoneware body.  
{Height: 12 inches (30.5 cm)}.  
Provenance:  
Property from the collection of Professor E.T. Hall, Portland, Oregon.



**Estimate:**  
\$1,200 / \$1,800

463  
**Chinese Black 'Partridge Feather' Glazed Lobed Dish.**  
Potted with flaring sides rising to a six-lobed rim, all supported on a flattened base on a splayed foot, covered overall save for the foot with a glossy black glaze liberally flecked with small irregular russet mottles, the glaze thinning to a pale mushroom color along the rim and partially revealing the pale buff body.  
{Width: 11 7/8 inches (30.2 cm)}.  
Provenance:  
Property from the collection of Professor E.T. Hall, Portland, Oregon.



**Estimate:**  
\$1,000 / \$1,500

460  
**Chinese Cizhou Black Glazed Russet Splashed Vase.**  
Of ovoid form with a sloping broad shoulder and a short neck with everted mouth rim, covered overall in a glossy black glaze profusely splashed with vivid russet splashes, the glaze stopping neatly above the foot revealing the buff stoneware body.  
{Height: 10 1/4 inches (26 cm)}.  
Provenance:  
Estate of Carl Schmid-Wahlgren by decent.



**Estimate:**  
\$750 / \$1,000

464  
**Chinese Black Glazed Russet Splashed Meiping Vase.**  
Of ovoid form with a sloping broad shoulder set with a flaring neck and an everted mouth rim, covered overall in a glossy black glaze profusely splashed with vivid russet fiolet medallions, the glaze stopping neatly above the foot revealing the buff stoneware body.  
{Height: 11 inches (28 cm)}.  
Provenance:  
From the collection of Captain Edward Pearce, Annapolis, Maryland.



**Estimate:**  
\$400 / \$600

461  
**Two Chinese Cizhou Ware Celadon Glazed Jars.**  
{Heights: 3 1/2 & 4 3/4 inches (8.9 & 12 cm)}.



**Estimate:**  
\$300 / \$500

465  
**Two Chinese Guan Type Fluted Bowls.**  
{Width: 4 3/8 & 4 1/2 inches (11.2 & 11.4 cm)}.



**Estimate:**  
\$1,200 / \$1,800

462  
**Chinese Cizhou 'Partridge Feather' Meiping.**  
The tall ovoid body with rounded shoulders surmounted with a short neck with canted rim, applied with a lustrous black-brown glaze suffused with russet colored 'partridge feather' streaks, the glaze ending above the foot revealing the buff body.  
{Height: 14 inches (35.6 cm)}.  
Provenance:  
Property from the collection of Professor E.T. Hall, Portland, Oregon.



**Estimate:**  
\$1,500 / \$2,000

466  
**Chinese Guan-Type Mallow-Shaped Brushwasher.**  
Potted with ten lobes, each in the shape of a mallow petal, flaring from a slightly recessed base with six spur marks, covered overall with a thick pale bluish glaze suffused with a dense network of iron gray crackles interspersed with faint golden crackles.  
{Width: 4 inches (10.2 cm)}.  
Provenance:  
Property of a Vancouver, Canada estate by descent.



**Estimate:**  
\$1,800 / \$2,500

467  
**Pair of Chinese Guan-Type Bottle Vases.**  
Each of compressed globular body surmounted with a tall cylindrical neck, covered overall with a lustrous grayish-blue glaze suffused with golden russet crackles, the glaze thinning at the rim revealing the dark brown body.

{Height: 7 1/4 inches (18.4 cm)}.  
Provenance:  
Property from the collection of Professor E.T. Hall, Portland, Oregon.



**Estimate:**  
\$1,000 / \$1,500

471  
**Chinese Longquan Celadon Guan-Type Vase With Handles.**  
The globular body surmounted with a tall cylindrical neck applied with a pair ring handles and flaring to a gallery rim, covered overall with a plum-green glaze suffused with golden russet crackles.  
{Height: 9 inches (23 cm)}.  
Provenance:  
Property from the collection of Professor E.T. Hall, Portland, Oregon.



**Estimate:**  
\$1,200 / \$1,800

468  
**Chinese Guan-Type 'Ice Crackle' Glazed Brushwasher.**  
The flared sides rising from a recessed base with eight petals, covered overall with a pale grayish-amber glaze suffused with luminous icy crackles, the glaze thinning at the rim revealing the dark russet body.  
{Width: 6 1/4 inches (16 cm)}.  
Provenance:  
Property from the collection of Professor E.T. Hall, Portland, Oregon.



**Estimate:**  
\$1,200 / \$1,800

472  
**Chinese Longquan Guan-Type 'Bamboo Neck' Vase.**  
The pear-shaped body encircled by three carved grooves above the waist, rising from a recessed foot to a tall tapering neck encircled by three bow-string bands in imitation of bamboo to a broad everted mouth, covered overall in a lustrous bluish-green glaze suffused with pale russet crackles.  
{Height: 9 1/2 inches (24 cm)}.  
Provenance:  
Collection of Dr. Reri Fujimura, Berkeley, California.



**Estimate:**  
\$1,000 / \$1,500

469  
**Chinese Guan-Type Tripod Censer.**  
The lobed globular body support on three short tubular legs, the lipped rim set with a pair upright loop handles, covered overall with an opaque grayish blue glaze suffused with luminous russet crackles.  
{Height: 5 inches (12.7 cm)}.  
Provenance:  
Collection of Dr. Reri Fujimura, Berkeley, California.



**Estimate:**  
\$400 / \$600

473  
**Chinese Longquan Celadon Glazed Spittoon, Zhadou.**  
The compressed globular body supported on a hollow foot and rising to a wide neck flaring at the rim, covered with bluish gray crackled glaze.  
{Height: 4 1/4 inches (10.8 cm)}.



**Estimate:**  
\$1,000 / \$1,500

470  
**Chinese Guan-Type Vase And Phoenix Head Ewer.**  
Consisting a mallet vase covered with a crackled bluish green glaze, and a persimmon glazed phoenix-head ewer.  
{Height: 6 inches (15.2 cm)}.  
Provenance:  
Property from the collection of Professor E.T. Hall, Portland, Oregon.



**Estimate:**  
\$800 / \$1,200

474  
**Large Chinese Longquan Celadon Glazed Charger.**  
Thickly molded with a raised edge to the bracket-lobed rim, the lobed sides forming the shallow well, a single peony blossom incised in the center, olive-green glaze covering all surfaces except a firing ring within the recessed base.  
{Diameter: approximately 13 1/2 inches (34.3 cm)}.



**Estimate:**  
**\$1,200 / \$1,800**

475  
**Chinese Longquan Celadon Mallet Vase.**  
The tapering cylindrical body with canted shoulder rising to a tall neck attached with flared mouth rim, covered overall with a crackled sea-green glaze, the footring burnt orange in the firing. {Height: 8 inches (20.3 cm)}.  
Provenance:  
Collection of Dr. Reri Fujimura, Berkeley, California.



**Estimate:**  
**\$300 / \$500**

480  
**Two Chinese Celadon Glazed Twin Fish Dishes.**  
{Diameter: 12 1/2 inches (31.8 cm)}.



**Estimate:**  
**\$1,000 / \$1,500**

476  
**Two Chinese Longquan Mallet Vases.**  
Both with cylindrical body and tubular neck, one with a pair 'fish' handles and gallery rim covered overall with crackled pale bluish-green glaze, and the other with a plain tubular neck covered overall with a 'plum-green' glaze. {Height: 6 3/4 inches (17 cm)}.  
Provenance:  
Property from the collection of Professor E.T. Hall, Portland, Oregon.



**Estimate:**  
**\$400 / \$600**

481  
**Two Chinese Monochrome Twin Fish Dishes.**  
{Diameters: 9 1/2 & 7 1/8 inches (24 & 18 cm)}.



**Estimate:**  
**\$600 / \$800**

478  
**Chinese Garlic Head Celadon Crackled Glazed Vase.**  
{Height: 13 1/4 inches (33.7 cm)}.



**Estimate:**  
**\$300 / \$500**

482  
**Small Chinese Celadon Mallet Vase.**  
{Height: Approximately 6 1/2 inches (16.5 cm)}.



**Estimate:**  
**\$400 / \$600**

479  
**Chinese Celadon Mallet Vase with Double Fish Handles.**  
{Height: 9 5/8 inches (24.4 cm)}.



**Estimate:**  
**\$300 / \$500**

483  
**Chinese Molded and Carved Celadon Meiping Vase.**  
{Height: Approximately 10 inches (25.4 cm)}.





**Estimate:**  
\$1,000 / \$1,500

484  
**Chinese Carved Qingbai Pillow.**  
Of rectangular form with flared sides, the top surface carved with a recumbent deer amidst floral scrolls, the sides carved with young boys among meandering floral sprays, applied overall with a transparent blue-tinged glaze.  
{Width: 10 1/2 inches (26.7 cm)}.  
Provenance:  
Property from the collection of Professor E.T. Hall, Portland, Oregon.



**Estimate:**  
\$400 / \$600

488  
**Chinese Conical Form Brown and Black Glaze Tea Bowl.**  
{Diameter: 6 7/8 inches (17.5 cm)}.



**Estimate:**  
\$1,800 / \$2,500

485  
**Chinese Qingbai Carved 'Dragon' Meiping With Cover.**  
The tall tapered ovoid body with broad rounded shoulder and short neck, carved in deep relief with a pair underglaze copper red writhing dragons over pale bluish glazed rolling waves, fitted with doomed cover with bud-shaped knob,  
{Height: 20 1/2 inches (52 cm)}.



**Estimate:**  
\$400 / \$600

489  
**Chinese Pair of Ox Blood Glazed Yuhuchun Vases.**  
Pair of pear shape copper red glazed baluster vase with carved hard wood bases.  
{Height: approximately 14 1/2 inches (37 cm)}.



**Estimate:**  
\$400 / \$600

486  
**Three Chinese Junyao Type Porcelains.**  
{Height of the tallest: Approximately 6 3/8 inches (16.2 cm)}.



**Estimate:**  
\$1,500 / \$2,000

490  
**Chinese Copper-Red Brush Washer.**  
Potted with deep rounded sides and with flared rim, covered to the interior and exterior with deep copper-red enamel with a sacrificial-red glaze of crushed strawberry tone, the glaze thinning to a translucent tone at the rim, the base inscribed with a calligraphy written in under-glazed blue enamel.  
{Width: 8 3/4 inches (22.2 cm)}.  
Provenance:  
Property from the collection of Professor E.T. Hall, Portland, Oregon.



**Estimate:**  
\$400 / \$600

487  
**Four Chinese Junyao Type Vases.**  
{Height: Approximately 6 5/8 inches (16.8 cm) each}.



**Estimate:**  
\$400 / \$600

491  
**Chinese Eggshell Porcelain Figure of a Lady.**  
{Height: 5 inches (12.7 cm)}.



492  
**Pair of Chinese Porcelain Parrots.**  
{Height: approximately 8 inches (20.3 cm)}.

**Estimate:**  
**\$300 / \$500**



497  
**Chinese Blue and White Lantern Vase.**  
Republic Period.  
Signed Lu Yunshan (1901-1974).  
{Height: 7 1/2 inches (19 cm)}.

**Estimate:**  
**\$400 / \$600**



493  
**Chinese Yellow Ground Polychrome Enameled Vase.**  
Of baluster form, its waisted neck decorated by bands of upright lappet leaves and its ovoid body brightly painted with bird, lotus flowers and leaves on a yellow enamel ground, the recessed base bearing an four character blue mark.  
{Height: 8 1/2 inches (21.6 cm)}.

**Estimate:**  
**\$600 / \$800**



498  
**Chinese Blue and White "Monk Cap" Ewer and Cover.**  
Of compressed globular form, rising to a broad slightly flared neck and a stepped-rim of 'monk's cap' shape; decorated with medallions of floral and scrolling lotus. All above a suspended Ruyi-head band with further lotus and encircling Tibetan inscription; with wide strap handle also painted with ruyi, and a jewelled lappet band encircling the ring foot; the base with Xuande six-character reign mark.  
{Height: 12 1/4 inches (31 cm) approximately}.

**Estimate:**  
**\$400 / \$600**



494  
**Chinese Gilt Black Ground Rouleau Vase.**  
{Height: 11 1/2 inches (29.2 cm)}.

**Estimate:**  
**\$600 / \$800**



499  
**Chinese Blue and White Rouleau Vase.**  
{Height: Approximately 16 1/2 inches (42 cm)}.

**Estimate:**  
**\$400 / \$600**



495  
**Chinese Wucai Garlic Head Pear Shape Vase.**  
{Height: 13 3/4 inches (35 cm)}.

**Estimate:**  
**\$400 / \$600**



496  
**Chinese WuCai Porcelain Covered Bowl.**  
{Width: 7 inches approximately (17.8 cm)}.

**Estimate:**  
**\$600 / \$800**



**Estimate:**  
**\$1,800 / \$2,500**

**500**  
**Chinese Blue and White Arabic Inscribed Ewer.**

The pear-shaped body tapering up to a narrow neck and a flared rim, set on one side with a curved spout joined to the neck by a cloud-shaped strut, opposite the arched strap handle, finely painted with two circular roundels each enclosing an Arabic inscription within a diamond shaped panel, all reserved on a stylized floral scroll ground, with upright plantain leaves around the neck, and a band of lappet petals encircle the foot, the base with a six-character Zhengde mark.

{Height: 10 1/2 inches (26.7 cm)}.  
Provenance:  
Property from the collection of Professor E.T. Hall, Portland, Oregon.



**Estimate:**  
**\$300 / \$500**

**501**  
**Chinese Blue and White Porcelain Buddha.**  
{Height: 19 1/2 inches (50 cm) approximately}.



**Estimate:**  
**\$1,800 / \$2,500**

**502**  
**Large Chinese Blue and White Arabic Inscribed Deep Bowl.**

Heavily potted with deep curved sides supported on a recessed foot, the interior painted with a central medallion enclosing a diamond panel with Arabic inscription and a floral scroll band beneath the rim, the exterior further decorated with Arabic inscribed diamond panels surrounded by ruyi scroll, the base with Zhengde mark.  
{Diameter: 11 inches (28 cm)}.  
Provenance:  
Property from the collection of Professor E.T. Hall, Portland, Oregon.



**Estimate:**  
**\$1,800 / \$2,500**

**503**  
**Chinese 'Arabic Inscribed' Double-Gourd Vase.**

Comprising a globular lower bulb joined to a pear shape upper bulb, painted with Arabic inscribed roundels in blue and iron-red, all reserved on a concentric rows of iron-red squares, the base with a six-character Longqing mark in underglaze blue.  
{Height: 16 1/2 inches (42 cm)}.  
Provenance:  
Property from the collection of Professor E.T. Hall, Portland, Oregon.



**Estimate:**  
**\$500 / \$700**

**504**  
**Chinese Underglaze Red and Blue Double Gourd Vase.**  
Painted in Kangxi style with foo dogs amidst clouds, formal borders to neck and foot.  
{Height: 9 inches (23 cm)}.



**Estimate:**  
**\$400 / \$600**

**505**  
**Pair of Chinese Blue Glazed Garlic Head Vases.**  
{Height: 7 1/8 inches (18 cm) each}.



**Estimate:**  
**\$400 / \$600**

**506**  
**Chinese Cafe Au Lait Ground Blue & White Decorated Baluster Vase.**  
{Height: 14 inches (35.6 cm)}.



507  
**Chinese Blue Glazed Brush Washer.**  
{Diameter: Approximately 9 1/2 inches (24.2 cm)}.

**Estimate:**  
**\$300 / \$500**



508  
**Vietnamese Blue and White Meiping Vase.**  
The baluster body with broad shoulder and short neck, painted around the body with pair peacocks amidst leafy floral scrolls, all between a floral band around the shoulder and lappet band encircle the foot.  
{Height: 12 1/2 inches (31.8 cm)}.  
Provenance:  
Property from the collection of Professor E.T. Hall, Portland, Oregon.

**Estimate:**  
**\$600 / \$800**



509  
**Group of Thirteen Chinese Porcelain Bird Feeders.**  
Consisting seven blue/white bird feeders, three celadon bird feeders, and three underglaze copper-red bird feeders, all attached with loop handles.  
{Largest: 4 1/2 inches (11.4 cm)}.  
Provenance:  
Property from the collection of Professor E.T. Hall, Portland, Oregon.

**Estimate:**  
**\$1,000 / \$1,500**



510  
**Chinese Famille Rose Enamel Teapot.**  
The compress globular body set with a short curving spout opposite a loop handle, painted around the body in famille rose enamel with a cricket on a cabbage, fitted with doomed cover; inscribed with poem on the opposite side, with four-character Yongzheng mark on the recessed base.  
{Length: 5 1/2 inches (14 cm)}.

**Estimate:**  
**\$400 / \$600**



511  
**Pair of Chinese Famille Noire Enameled Porcelain Covered Jars.**  
Its flared neck, ovoid body and spreading foot painted in black and brightly hued enamels with birds amid blossoming prunus branches rising from bamboo and garden rocks, recessed base.  
{Height: 17 inches (43 cm) approximately}.  
[Age related wear, one lid restored].

**Estimate:**  
**\$1,000 / \$1,500**



512  
**Chinese Famille Rose Revolving Brush Pot.**  
Of cylindrical form, constructed from three parts, core forming the pot fixed into the lower section, with a revolving upper section, the exterior walls decorated with wan-fret bands incorporating the eight trigrams, a pair of phoenix amidst clouds, a horse carrying sacred above the ocean waves and jagged rocks, base centered with six character Qianlong mark.  
{Height: 5 5/8 inches (14.3 cm)}.

**Estimate:**  
**\$1,000 / \$1,500**



513  
**Chinese Famille Rose Enameled Porcelain Vase.**  
Finely sculpted in the form of three kneeling boys supporting a vase on their backs, the vase of baluster form flanked by a pair of dragon handles, the exterior painted and enameled against lime ground, depicting stylized lotus and hibiscus sprays below a ruyi band, all below a further floral band and upright lappets, each boy modeled with arms held upwards, wear loose robes; a separated orange red glazed pedestal decorated with gilt floral and foliate scroll band, six-character gilt seal marks inscribed to the base.  
{Height: 7 3/8 inches (18.7 cm)}.

**Estimate:**  
**\$1,200 / \$1,800**



514  
**Chinese Famille Rose Baluster Vase.**  
Of baluster form with flaring neck, applied moulded lion-dog handles to shoulder, the body decorated with birds and flowers.  
{Height: Approximately 15 inches (38 cm)}.

**Estimate:**  
**\$300 / \$500**



**515  
Three Chinese Famille Rose Porcelain.**  
Comprising a famille rose sleeve vase, a hat holder with floral motifs, and a dragon cup on stand, with a six character marks in iron red and gilt script.  
{Tallest: 11 1/4 inches (28.6 cm)}.

**Estimate:  
\$400 / \$600**



**520  
Pair of Chinese Pierced Porcelain Wedding Lanterns.**  
Hexagonal ovoid section surmounted by a tiered everted opening, each of the exterior sides centered with a small figural and landscape roundel set within an openwork ground, supported by a separately potted waisted base.  
{Height: approximately 10 5/8 inches (27 cm)}.

**Estimate:  
\$500 / \$800**



**516  
Chinese Famille Rose Porcelain Vase.**  
{Height: 10 1/2 inches (26.7 cm)}.

**Estimate:  
\$400 / \$600**



**521  
Large Chinese Canton Enameled Baluster Figural Vase.**  
{Height: 23 inches (58.4 cm)}.

**Estimate:  
\$400 / \$600**



**517  
Chinese Famille Rose Enameled Porcelain Gu Form Vase.**  
Of baluster form flaring at neck and foot, the body brightly painted with two dragons chasing flaming pearl admits clouds, between the bands of Ruyi pendants and floral panels.  
{Height: 14 inches (35.6 cm)}.

**Estimate:  
\$400 / \$600**



**522  
Pair of Chinese Figural Rouleau Vases.**  
Finely enameled with continuous scene with warrior and his attendant praying to the fairy ladies under gnarled pine tree, between bands of intricate diaper, and foliate motifs at the foot and neck, with two red seals.  
{Height: 13 1/2 inches (34.3 cm) each}.

**Estimate:  
\$300 / \$400**



**518  
Pair of Chinese Porcelain Figural Plaque.**  
Polychrome enameled porcelain plaque with carved red lacquer frames, depicting the immortal Liu Hai sporting the toad under a willow tree, inscribed and signed 'Wang Qi' with a underglaze red seal mark.  
{32 x 14 inches (81.3 x 35.6 cm)}.

**Estimate:  
\$800 / \$1,200**



**523  
Chinese Canton Famille Rose Enamel Figural Teapot.**  
{Height: 7 inches (17.8 cm) including handle}.  
[Age related losses].

**Estimate:  
\$400 / \$600**



**519  
Large Chinese Baluster Figural Vase.**  
Depicting two female warriors on the horse back accompanied by servants, flanked by gilt stylised dragon handles, inscribed, signed with seal mark.  
{Height: 24 inches (61 cm)}.

**Estimate:  
\$300 / \$400**



524  
**Three Chinese Export Famille Rose Porcelain Teapot & Cups.**  
Comprising a Chinese export porcelain famille rose globular teapot with floral motif and two small figural tea cups.  
{Height of the tea pot: Approximately 7 inches (17.8 cm)}.  
[Age related enamel and paint loss, small chip on the spout of the teapot].

**Estimate:**  
**\$800 / \$1,200**



528  
**Pair of Chinese Yellow Peking Glass Gu Form Vases.**  
Accompanied by wooden display stands.  
{Height: approximately 9 3/8 inches (23.8 cm) each excluding stands}.

**Estimate:**  
**\$300 / \$500**



525  
**Pair of Chinese Export Beaker Vases.**  
{Height: 10 1/2 inches (26.7 cm)}.

**Estimate:**  
**\$600 / \$800**



529  
**Pair of Chinese Blue Peking Glass Bowls.**  
{Diameter: 4 inches (10.2 cm)}.

**Estimate:**  
**\$400 / \$600**



526  
**Three Chinese Export Teapot & Creamer.**  
Qing Dynasty.  
Comprising a famille rose porcelain tea pot with birds and flower decoration, a teacup and a creamer, each bearing European cartouche.  
{Height of the tea pot: Approximately 6 1/8 inches (15.6 cm)}.  
[Handles with restoration].

**Estimate:**  
**\$400 / \$600**



530  
**Chinese Yixing Tea Pot.**  
Signed 'Wang Yi Xian'.  
{Width: 5 inches (12.7 cm)}.

**Estimate:**  
**\$400 / \$500**



527  
**Three Chinese Export Mug and Plates.**  
18th Century.  
{Diameter of the largest plate: 11 inches (28 cm)}.  
[Cracks and repairs].

**Estimate:**  
**\$600 / \$800**



531  
**Two Chinese Yixing Clay Teapots.**  
The first one signed 'Zhou Gui Zheng', the second teapot with bamboo motif, signed 'Ming Xiao Jing'.  
{Width of the first teapot: 6 3/4 inches (17 cm); Height of the bamboo teapot: 5 1/4 inches (13.3 cm)}

**Estimate:**  
**\$400 / \$600**



532  
**Two Chinese Yixing Teapots.**  
The first a enameled and glazed melon teapot, the second is a gnarled tree trunk form clay tea pot.  
{Widths: 8 & 8 3/4 inches (20.3 & 22.2 cm)}.

**Estimate:**  
**\$400 / \$600**



533  
**Group of Korean Celadon Glazed Pottery Bowls and Vases.**  
 {Tallest: 8 inches (20.3 cm)}.

**Estimate:**  
**\$300 / \$500**



537  
**Japanese Cast Bronze Elephant Form Vase.**  
 {Height: Approximately 14 1/2 inches (36.8 cm)}.

**Estimate:**  
**\$500 / \$800**



534  
**Six Japanese Carved Wood and Horn Netsukes.**  
 Edo and Meiji Period.  
 Comprising three carved wood figural netsuke, a carved horn figural netsuke, and two carved nut masks.  
 {Approximate height, 2 inches}.

**Estimate:**  
**\$300 / \$400**



538  
**Four Japanese Woodblock Prints.**  
 All framed and glazed.  
 {Image: 14 1/2 x 10 inches (36.8 x 25.4 cm); Frame: 19 x 14 inches (48.3 x 35.6 cm)}.

**Estimate:**  
**\$400 / \$600**



535  
**Three Japanese Inros and Pendant.**  
 Comprising a four compartment gold-lacquer inro, both sides depicting a dragon amid the clouds and beast in landscape setting, unsigned; a carved wood amorphous inro, and a carved wood pendant.  
 {Approximate length of largest pendant, 4 1/4 inches (10.8 cm)}.

**Estimate:**  
**\$400 / \$600**



539  
**Hiroshige (1797-1858): Ten Woodblock Prints.**  
 All oban, titled, eight of the ten are from the series of 'The Twelve Views of Mount Fuji', signed with seals.  
 {13 1/2 x 8 3/4 inches (34.3 x 22.2 cm) each approximately}.  
 [Two horizontal woodblock prints trimmed, fading and toning, creasing].

**Estimate:**  
**\$400 / \$600**



536  
**Two Contemporary Japanese Ceramic Vessels Encased in Woven Wire.**  
 Elongated cylindrical forms with everted lips, encased in basket woven wire.  
 {Height of the Taller Vessel: 17 1/2 inches (44.5 cm)}.  
 Provenance:  
 From a San Francisco apartment designed by Steven Volpe.  
 Purchased from William Lipton Gallery, New York.

**Estimate:**  
**\$400 / \$600**



540  
**Attributed to Korean Artist Min Kyong-Kap (B. 1933): Peony.**  
 Watercolor, titled 'Peony', inscribed, signed and with five seals, framed and glazed.  
 {Image: 18 5/8 x 13 3/8 inches (47.3 x 34 cm); Frame: 25 1/2 x 20 3/8 inches (64.8 x 51.8 cm)}.

**Estimate:**  
**\$2,000 / \$3,000**



541  
**Large Framed Japanese Silk Embroidery Tapestry.**  
 Depicting a pagoda with two imposing dragons.  
 {Tapestry: 75 x 50 inches (190.5 x 127 cm); Frame: 85 x 61 inches (216 x 155 cm)}.

**Estimate:**  
**\$500 / \$700**



542  
**Japanese Four Panel Folding Screen.**  
{95 x 67 1/2 inches (241.3 x 171.5 cm)}.  
[Losses, restored].

**Estimate:**  
**\$400 / \$600**



543  
**Japanese Pine Kitchen Tansu.**  
{73 x 66 1/2 x 18 inches (1854 x 169 x 45.7 cm)}.

**Estimate:**  
**\$400 / \$600**



544  
**Small Japanese Pin Tansu with Iron Fixtures.**  
{32 x 26 x 17 1/2 inches (81.3 x 66 x 44.5 cm)}.

**Estimate:**  
**\$300 / \$500**



545  
**Large Japanese Stair Form Tansu.**  
{76 x 73 1/4 x 30 1/2 inches (193 x 186 x 77.5 cm)}.  
[Aged cracks, losses, possible repairs].

**Estimate:**  
**\$300 / \$400**



# Artist Index

Artist	Lot #	Artist	Lot #
Ahlgren, Roy .....	205, 210, 214	Hoffmann, Anton .....	195
Albers, Josef .....	212	Icart, Louis .....	194
American School .....	172, 219	Ida, Shoichi.....	223
Barker, Lucy Hayward.....	173, 175	Jansson, Alfred (attributed To) .....	180
Bell, Cecil Crosley .....	171, 177	Keith, Walter (castle) .....	166
Bicknell, Frank A.....	179	Korovin, Konstantin Alexeievitch .....	193
Bittar, Pierre.....	228, 230	Lautrec, Henri De Toulouse- .....	189
Biva, Paul .....	185	Lewitt, Sol .....	204
Chagall, Marc.....	229	Lurçat, Jean .....	184
Combes, Simon .....	187	Max, Peter .....	203, 206
Cornoyer, Paul .....	168	Moigniez, Jules (after) .....	196
Dali, Salvador .....	225	Neiman, Leroy .....	217
Dawson, William .....	208, 209	Nevelson, Louise .....	198
De Forest, Roy .....	207	Noda, Tetsuya .....	221, 222, 224
Di Suvero, Mark .....	213, 218	Redgate, Arthur William .....	182
Dine, Jim .....	199	Reni, Guido (after) .....	190
Dufner, Edward.....	167	Ripple, Jeffrey .....	211
Earle, Eyvind .....	200	Rivera, Diego.....	170
English School .....	188	Rose, Guy .....	174
Ernst, Otto .....	226	Sayers, John .....	202
European School .....	197	Somov, Konstantin Andreevich.....	191
French School .....	227	Uttech, Thomas Martin .....	201
Fromentin, Eugene .....	181	Vlaminck, Maurice De (attributed To) .....	192
Galvan, Jesus Guerrero .....	169	Von Bremen, Johann Georg Meyer .....	183
German School .....	186	Warhol, Andy.....	215
Haring, Keith .....	216	Wiegand, Gustave Adolph.....	178
Haubenstock, Mike .....	220		

# Michaan's Auctions - Terms and Conditions of Sale

## STANDARD CONDITIONS OF SALE

These Conditions of Sale are binding on all purchasers at Auction. Please read carefully.

By registering to bid at auction, in person, or through an agent, by absentee bid, or telephone or any other means including the Internet and e-mail, you agree to be bound by these Conditions of Sale (and changes made as noted below.) All property and every lot for sale in our catalogue is offered subject to the following terms and conditions, along with any changes that may be published or announced prior to or during a sale by Michaan's Auctions. (MA). The terms "MA" "us," "we," or "our" as used herein all refer to Michaan's Auctions. Unless otherwise indicated in the catalogue or at time of sale, MA acts at all times solely as the agent for the seller. All sales shall be deemed to occur in California regardless whether by telephone, mail or through the Internet or the physical location of the buyer.

## DEFINITIONS

**Hammer price:** The highest bid received for a lot upon the fall of the auctioneer's hammer.

**Buyer's premium:** The amount paid by the buyer as a percentage of the hammer price and in addition thereto.

**Purchase price:** The aggregate of the hammer, buyer's premium and applicable taxes or other fees, if any, as may be required by law.

**Reserve:** The minimum price at which the lot may be sold.

**Buyer:** The person or entity who buys property at auction or private sale.

**Consignor:** The seller, or the seller's representative, on behalf of whom we are selling the Property.

**Lot:** The single item or group of items offered by us for sale. Property: The item or items comprising an auction lot being offered for sale.

## BUYER'S PREMIUM

The Buyer shall pay a Buyer's Premium per lot which shall be retained by MA as follows:

Twenty percent (20%) of the first \$250,000.00 of the bid price, fourteen percent (14%) of the amount of the bid price above \$250,000.00 up to and including \$1,000,000.00, and twelve percent (12%) of the amount of the bid price over \$1,000,000.00. If you choose to pay by credit card (Visa, Mastercard or Discover only) or any other form of payment, the buyer's premium is twenty-three percent (23%) of the first \$250,000.00 of the bid price, seventeen percent (17%) of the amount of the bid price above \$250,000.00 up to and including \$1,000,000.00, and fourteen percent (14%) of the amount of the bid price over \$1,000,000.00. Internet Buyer's Premium is twenty-seven percent (27%) of the first \$250,000.00 of the bid price and twenty-two percent (22%) of the amount of the bid price over \$250,000.00.

## TERMS OF SALE

### a. The Purchase of and Payment for Property

The sale of a lot shall be to the highest bidder as determined by the auctioneer, in accord with these Conditions of Sale. Title to the lot shall pass with the fall of the Auctioneer's hammer. Buyer shall pay the Purchase price, as defined above, and such other fees as may be due, in full, within seven (7) days of the auction sale. Sale is not final and property will not be released to Buyer until good funds for all amounts due, are received by MA. Payment may be made (i) in cash, (ii) by wire transfer (additional \$25 fee), (iii) by money order or other guaranteed funds, or (iv) by personal check (when buyer's credit is approved). No lot shall be transferred by Buyer to another person until the sale is final. In the event of partial payment for any lot or lots we shall apply payments, in our discretion, to the lot or lots we select. The Buyer grants MA a security interest in the purchased Property, and we may retain as collateral any property purchased and any funds in our possession, to secure a

Buyer's obligations to us, if any. We retain the rights of a secured party under the California Commercial Code. All fees, taxes, premiums or other sums due and not paid pursuant to this paragraph shall bear interest at 1.5 % per month from the 8<sup>th</sup> day following the sale to the date paid in full.

### b. Collection of Property

Upon transfer of title, Buyer assumes full responsibility, including risk of loss and damage, for the Property. Purchased property shall be removed at Buyer's expense within fifteen (15) days after the sale becomes final. Property not removed shall be subject to a service fee of \$50, and a storage fee, if retained by MA, of 1% of the purchase price per month. MA may also, in its sole discretion, elect to place the Property in a public storage facility at the Buyer's sole risk, responsibility and expense.

### c. Liability for delivery of property

If, for any reason whatsoever, we are unable to deliver the purchased Property to the Buyer, MA shall be liable to the Buyer only for the Purchase price paid by the Buyer and in no event shall we be liable for incidental or consequential damages, including, but not limited to, business interruption or loss of profit.

## THE AUCTION PROCEDURE

### a. Registration

Bidders must register in advance to bid at auction. (a) If by mail or on the Internet please comply with, sign and send back the requisite form or absentee bid. (b) To telephone bid, Bidders must complete, sign and fax a copy of the Telephone Bid Registration Form, which is available only by calling MA. Telephone lines are limited, and available on a first-come, first-serve basis. Registration to bid by telephone must be completed by 5 p.m. the day prior to the auction. (c) When intending to bid in person, pre register at the desk and obtain a bidding paddle. The auctioneer may refuse to recognize any person not registered and not having a paddle number. MA reserves the right at its sole discretion, to refuse anyone the right to register and participate at an auction.

Registration to bid by telephone must be completed by 5 p.m. the day prior to the auction. (c) When intending to bid in person, pre register at the desk and obtain a bidding paddle. The auctioneer may refuse to recognize any person not registered and not having a paddle number. MA reserves the right at its sole discretion, to refuse anyone the right to register and participate at an auction.

### b. Announcements

We may, at the commencement of, or during the Auction, announce changes in or modifications to the Conditions of Sale or descriptions of Property.

### c. Absentee Bids

For a Buyer's convenience, absentee bids will be accepted, when properly executed and submitted in a timely manner. However, we neither accept any responsibility to an absentee bidder, nor any liability whatsoever for a failure to execute the absentee bid for any reason. In the event that identical multiple absentee bids are the highest bids received for the same lot then the earliest received of the competing absentee bids shall prevail at that bid amount.

### d. Auctioneer's Discretion

The Auctioneer has the absolute discretion to 1) pass a lot or withdraw it from sale at any time prior to its actual sale; 2) refuse to recognize any bidder; 3) refuse to recognize any bid; 4) resolve any dispute between bidders or resolve any doubtful bid by deciding who is the successful bidder or nullifying the auction of the lot and reoffering it for sale. The Auctioneer's decision is binding as to disputes arising at auction. If a dispute arises post sale, our records of the sale shall be conclusive. Both the Auctioneer and MA shall be without any liability whatsoever resulting from the exercise of the discretion referred to herein.

### e. Reserves

All Property is offered for sale subject to a Reserve unless otherwise stated by us at time of sale. MA may protect the Reserve by an initial bid or continued bidding on behalf of the consignor. Any bids by MA staff after the Reserve is met shall be made only on behalf of registered bidders. Neither the consignor nor an agent or representative of the consignor is allowed to bid on their own property.

## DISCLAIMER OF WARRANTIES

Except for warranty of title, neither we nor the Consignor make any warranties, guarantees or representation, express or implied, with respect to the Property, including, but not necessarily limited to, any implied warranty of "fitness for purpose" or "merchantability." Any and all statements and descriptions in any catalogue or elsewhere by MA, relating to age, attribution, authenticity, size, genuineness, provenance, historical relevance or significance, physical condition, importance, quality, quantity, rarity, period, culture, source or origin, are presented as statements of qualified opinion only. MA's disclaimer of liability covers information contained in catalogues, and all other printed material published by us, including condition reports. Buyers assume the responsibility to inspect the Property and make their own decision as to the nature, quality and value of the Property. Neither MA nor the Consignor make any warranty or representation with regard to the existence of or the transfer of intellectual property rights, except and to such extent as may, from time to time, be explicitly stated. No employee of MA is authorized to nor shall make any warranty or representation on MA's behalf, except as stated in the catalog or in any written addendum.

## ESTIMATES OF VALUE

All estimates of value as published in our Catalogues or elsewhere are statements of qualified opinion as to the range of the price a willing buyer might pay for the Property at auction. The actual price paid at auction or subsequently, may vary substantially from the estimates. MA shall not be liable for any such differential.

## BUYER'S DEFAULT

If a Buyer fails to pay for purchased Property, or otherwise does not comply with these Conditions of Sale, the Buyer shall be in default. In addition to all remedies available in law, to MA and to the Consignor, the Buyer shall be liable for the entire Purchase price. Additionally, at our option, we may either cancel the sale and retain all payments made by Buyer as well as retain any and all Property of Buyer in our possession as security against payment of the sums in default, or we may re-offer the Property for sale, at auction or privately, without reserve. Buyer shall be liable to us and the Consignor for the additional fees, commissions and costs on both sales (including handling, storage and court costs and attorney's fees) resulting from the cancellation or resale of the Property and in the event of resale, any deficiency which may result.

## RESCISSION

The sole and exclusive remedy, available only to the original buyer, is the limited right of rescission set forth herein. MA will cancel the sale of Property if the original buyer establishes to our satisfaction that there has been a breach of the Consignor's warranty of title, or that the identification of Authorship\* of the Property as set forth in **Bold** Type Heading is not substantially correct, based on a fair reading of the Catalogue (as may be amended by posted or announced changes.) **IN ALL INSTANCES, YOU MUST GIVE WRITTEN NOTICE TO US WITHIN 30 DAYS OF THE SALE OF THE PROPERTY, SETTING FORTH THE BASIS FOR YOUR CLAIM AND, AT YOUR SOLE EXPENSE AND RISK, RETURN THE PROPERTY IN QUESTION TO MA WITHIN SEVEN (7) DAYS AFTER NOTICE IS GIVEN AND IN THE SAME CONDITION AS WHEN SOLD.** Upon review of the claim and the property, if we are satisfied with the bases for your claim and the property is in the same condition it was in when sold, MA will rescind the sale and return to you the Purchase price, unless we have already remitted funds to the Consignor. In that event, and at MA's sole discretion, MA shall either pay you as provided above, or shall pay you only

that portion of the Purchase price retained by us (the Seller's commission, the buyer's premium and any sales taxes collected) and on your behalf make demand on the Consignor for the balance and upon receipt of the funds remit same to you. Should the Consignor refuse to return the funds to you or to MA, we shall disclose the Consignor's identity and assign to you any and all rights MA may have against the Consignor. Any and all liability MA may have as agent for the Consignor shall thereupon terminate.

BUYER EXPRESSLY UNDERSTANDS AND AGREES THAT MA SHALL HAVE NO OTHER LIABILITY TO THE BUYER EXCEPT FOR THE RETURN OF THE PURCHASE PRICE AND THAT IN NO EVENT SHALL MA BE LIABLE FOR ANY DAMAGES, INCLUDING BUT NOT LIMITED TO INCIDENTAL, CONSEQUENTIAL OR COMPENSATORY DAMAGES OR LOSS OF PROFIT OR BUSINESS OPPORTUNITY.

\*Authorship refers to the maker or creator of the Property, and the period, social culture, and origin of the Property as stated in the **Bold** Type Heading for a given lot in our catalogue. It does not refer to the descriptions which may be contained in the information below the **Bold** Type Heading.

## MISCELLANEOUS

*a. Modification:* No modification or amendment of the Conditions of Sale shall bind MA unless contained in a writing signed by MA, except as may be posted or published as noted above or verbally announced at time of sale.

*b. Severability:* If, for any reason, any part of the Conditions of Sale is held to be invalid or unenforceable, the remaining portion shall be valid and enforceable.

*c. Successors and Assigns:* The Conditions of Sale shall be binding on all the heirs and assigns of the Buyers and bidders and inure to the benefit of MA's successors and assigns.

*d. Jurisdiction, Venue, Choice of Law:* Dispute resolution shall occur in Alameda County, California, USA. The provisions of the Conditions of Sale will be construed and disputes determined by application of California Law, without regard to conflicts of law.

*e. Notice, Service of Process:* Buyers agree to accept all notices and service of process relating to dispute resolution at the address provided by Buyer on any registration forms required to be executed as a condition of bidding in our auction.

*f. Dispute Resolution:* All disputes and claims arising out of or relating to events and actions covered herein, brought by or against us, shall be resolved by mediation or binding arbitration in accord with the procedures set forth below. This provision does not apply to claims brought by the Buyer directly against the Consignor, including, but not limited to any action brought pursuant to the rescission provisions noted above.

## OPTIONAL PROVISIONS

Shipping, insurance packaging and handling of purchased lots is at the risk and expense of the purchaser. MA shall not, under any circumstances, be liable for the loss, theft or damage to property, including, but not limited to selection of shipper, the acts or omissions of any shipper or the acts or omissions occurring in packing for shipment. It is the purchaser's responsibility to obtain a shipping quote for any lot being offered, from an outside shipper, prior to the auction date. Post sale determination of shipping costs does not constitute grounds for cancellation of any purchase made at auction. Purchasers are advised that large and fragile items can be expensive.

## MEDIATION AND ARBITRATION PROCEDURES

(a) Within 30 days of written notice that there is a dispute, the parties or their representatives may meet at a time and place mutually agreed upon, to mediate their differences. If the parties agree, a mediator acceptable to the parties shall be selected. The mediator shall be

an attorney, trained in mediation techniques and familiar with commercial law and the California Uniform Commercial Code (UCC). The mediator's fees shall be shared equally and paid by all parties. At the mediation, all parties shall have actual authority to settle the dispute. Any statements made during, and all aspects of, the mediation process shall be kept confidential and shall not be admissible in any subsequent arbitration or judicial proceeding. Any resolution shall be confidential. (b) If the parties cannot agree to mediation, or if mediation does not resolve the dispute, or in any event no longer than 60 days after receipt of written notice referred to above, the parties shall submit the dispute for binding arbitration before a single neutral arbitrator jointly selected, or absent agreement, selected from the panel of Arbitrators provided by the American Arbitration Association (AAA). If, within 15 days, the parties cannot agree on an arbitrator, then AAA shall select one (1) person as arbitrator in accord with AAA rules. The arbitrator shall be an attorney, experienced in commercial law and with the UCC. The arbitrator shall be required to follow the law in making his award, and the award shall be in writing and shall set forth findings of fact and legal conclusions. (c) The arbitration shall occur within 60 days of the selection of the arbitrator, in either Oakland or San Francisco, California, unless the parties agree to another location. Discovery and the procedure for the Arbitration shall, unless otherwise agreed to by the parties, follow the procedures and policies of AAA governing commercial arbitration, subject however to the following modifications:

1. All arbitration proceedings shall be confidential. None of the parties nor the arbitrator, may disclose the existence, content or results of the arbitration without the written consent of all parties.
2. The parties shall attempt to agree on the issues to be arbitrated, or identify the disputed issues in writing no later than 45 days prior to arbitration.
3. Unless otherwise agreed by the parties, discovery, if any, shall be limited as follows: (a) Requests for no more than 10 clearly identified categories of documents, to be provided to the requesting party within 14 days of written request therefore; (b) Depositions: No more than two (2) per party, provided however, the deposition(s) are to be completed within one (1) day; (c) Compliance with the above shall be enforced by the arbitrator in accord with California law.
4. Each party shall have no longer than eight (8) hours to present its position. The entire hearing before the arbitrator shall not take longer than three (3) consecutive days, unless all parties agree otherwise in writing. The award shall be made in writing no more than 30 days following the end of the proceeding. Judgment upon the award rendered by the arbitrator may be entered by any court having jurisdiction thereof. Each party shall bear its own attorney's fees and costs in connection with the proceedings and shall share equally the fees and expenses of the arbitrator.

This auction is being conducted in compliance with section 2328 of the Commercial Code, section 535 of the Penal Code, and provisions of the California Civil Code.

Bonded pursuant to California Civil Code sec 1812.600 et seq. Bond # 71393954

## JEWELRY SOLD AT MICHAAN'S AUCTIONS:

It is the responsibility of the bidder to examine carefully any item(s) of potential interest.

For all the jewelry sold here at Michaan's Auctions the following applies:

All gemstone weights are approximate.

We are aware of the many types of treatments and/or enhancements used today on diamonds and colored stones. The purpose is to improve their appearance i.e. color and/or clarity. Techniques like heat treatments, color diffusion, irradiated, HTHP, oiling, resin, bleaching,

dying and impregnation are just a few techniques known today. Some treatments combined. Some treatments are not detectable using standard gemological procedures. Not all treatments are permanent. Prospective buyers are therefore reminded that unless otherwise noted in the description(s), it must be assumed that some form of enhancement may have been used.

Regarding laboratories certification: The certifications mentioned in the descriptions only reflect the opinions of the laboratory. From one laboratory to another they do differ on the degrees of grading and/or treatments. And if a stone has a certificate from a laboratory we cannot guarantee this grading.

Watches must be examined carefully. Although we do attempt to mention in our descriptions significant defects, needed repairs, absent stones and the like, we do not guarantee the accuracy or operation of any watch function.

Detailed condition reports are available for most pieces. These reports contain more information than the catalogue descriptions. Images shown may appear smaller or larger than actual size.

## ASIAN ARTS DISCLAIMER:

We are aware of the many types of treatments and/or enhancements used today on jade. The purpose is to improve their appearance, i.e. color and/or clarity. Techniques like bleaching, dying and impregnation are just a few techniques known today. These treatments are not detectable using standard gemological procedures. Not all are permanent. Prospective buyers are therefore reminded that unless otherwise noted in the description(s),<sup>1</sup> it must be assumed that some form of enhancement may have been used.

<sup>1</sup> Accompanied by a laboratory report stating natural, no evidence of treatment.

## PROPERTY MADE FROM OR CONTAINING MATERIALS FROM ENDANGERED OR PROTECTED SPECIES

Property that contains any percentage of material made or potentially made from endangered and/or other protected species of wildlife are, as a courtesy, marked in the catalogue with the symbol " \* ". Michaan's Auctions does not accept any responsibility or liability for failing to mark such lots. Such material includes, but is not limited to, ivory, tortoise shell, crocodile skin, whalebone, rhinoceros horn, some species of coral and certain woods.

Prospective buyers are advised that several countries completely prohibit importation of property made, all or in part, of proscribed materials. Some countries require special permits, such as a CITES permit, from the relevant regulating authority in the countries of exportation and importation as well. Potential buyers intending to import the property into another country should be familiar with the relevant customs laws and regulations prior to bidding on property containing wildlife material. Regulations may vary as the U.S. prohibits importation of articles containing material(s) from species it has designated endangered or threatened if the articles are less than 100 years old.

It shall be the potential buyer's sole responsibility to research and satisfy the requirements of any laws and regulations that apply to the import and export of property as described in the aforementioned paragraphs. Prospective buyers must also note that the inability or delay in obtaining permits, licenses or other permissions to import or export property containing potentially regulated wildlife material will not constitute a basis for rescission or cancellation of the sale of said property or the delay in payment of purchased items in accordance with the Conditions of Sale.

## NO GUARANTEE OF AUTHENTICITY FOR CHINESE PAINTINGS

Currently, scholarship in the field of Chinese paintings precludes the ability to provide unqualified statements or opinions as to Authorship or date of execution. The terms for RESCISSION in the Conditions of Sale, (as set out on our internet site and in our catalogues) does not apply to Chinese paintings. However, if within twenty (20) days of the sale of any such lot, the original purchaser provides Michaan's with both written notice that the lot is a forgery, and within seven (7) days after written notice, said purchaser returns the lot to us in the same condition as when sold and demonstrates to our satisfaction that the lot is a forgery, Michaan's will rescind the sale and refund the purchase price received to the original purchaser. "Forgery" for the purposes of this provision, is defined as a work created with the intent to deceive.

### Definitions of Authorship:

This is to qualify the relationship between the object and the named person in the catalogue. The following conventions for attribution are used by Michaan's Auctions:

**Giovanni Bellini:** In our opinion a work by the artist. When the artist's forename(s) is not known, a series of asterisks, followed by the surname of the artist, whether preceded by an initial or not, indicates that in our opinion the work is by the artists named.

**Attributed to Giovanni Bellini:** In our opinion probably a work by the artist but less certainty as to authorship is expressed than in the preceding category.

**Studio of Giovanni Bellini:** In our opinion a work by an unknown hand in the studio of the artist, which may or may not have been executed under the artist's direction.

**Circle of Giovanni Bellini:** In our opinion a work by an as yet unidentified by distinct hand, closely associated with the named artist but not necessarily his pupil.

**Style of .....; follower of Giovanni Bellini:** In our opinion a work by a painter working in the artist's style, contemporary or near contemporary, but not necessarily his pupil.

**Manner of Giovanni Bellini:** In our opinion a work in the style of the artist and of a later date.

**after Giovanni Bellini:** In our opinion a copy of a known work of the artist.

The term **signed** and/or **dated** and/or **inscribed** means that in our opinion the signature and/or date and/or inscription are from the hand of the artist.

The term **bears a signature** and/or **date** and/or **inscription** means that in our opinion the signature and/or date and/or inscription have been added by another hand.

**"bearing signature..." / "bearing date..." / "bearing inscription..."** In our opinion the signature/date/inscription is by a hand other than that of the artist.

### Typical Headings:

#### FURNITURE

##### George III Mahogany Chest of Drawers

*Third Quarter 18th Century*

This heading, with date included, means that the piece is, in our opinion, of the period indicated with no major alterations or restorations.

##### George III Mahogany Chest of Drawers

This heading, without the inclusion of the date, indicates that, in our opinion, the piece, while basically of the period, has undergone significant restoration and alteration.

##### George III Style Mahogany Chest of Drawers

The inclusion of the word "style" in the heading indicates that, in our opinion, the piece was made as an intentional reproduction of an earlier style.

#### BRONZES

##### Antoine-Louis Barye

This heading indicates that the casting and patination were done by the artist or with his direct authorization or supervision.

##### Cast After a Model by Antoine-Louis Barye

This heading indicates that the casting and patination of a known Barye model were done by another, i.e., artisans at the F. Barbedienne or other foundry.

#### CERAMICS

##### Meissen Porcelain Cup and Saucer

*Late 19th Century*

This states that the cup and saucer were made at the Meissen factory in the last quarter of the 19th Century.

##### Meissen Porcelain Cup and a Saucer

*Late 19th Century*

Again, this states that the cup and saucer were made at the Meissen factory in the last quarter of the 19th Century, but it also indicates that the cup and saucer may not have been "born" together.

##### Meissen Porcelain Cup and Saucer

*Circa 1900*

This states that the cup and saucer are of Meissen style, and although of the date specified, not necessarily made at the Meissen factory.

##### 'Meissen' Porcelain Cup and a Saucer

*19th Century*

This states that the cup and saucer are of Meissen style, and although of the date specified, not necessarily made at the Meissen factory.

##### Meissen Porcelain Cup and Saucer

The title without a specific date simply states that the pieces were made at the Meissen factory but does not specify when, implying that their age is questionable.

## Bid Increments

Minimum Value	Maximum Value	Expected Bid Increment
from US \$ 0	to US \$ 49	US \$ 5
from US \$ 50	to US \$ 199	US \$ 10
from US \$ 200	to US \$ 499	US \$ 25
from US \$ 500	to US \$ 999	US \$ 50
from US \$ 1,000	to US \$ 1,999	US \$ 100
from US \$ 2,000	to US \$ 4,999	US \$ 250
from US \$ 5,000	to US \$ 9,999	US \$ 500
from US \$ 10,000	to US \$ 19,999	US \$ 1,000
from US \$ 20,000	and above	US \$ 2,500



**Michaan's Auctions**

2751 Todd Street  
Alameda, CA 94501  
(800) 380-9822  
or (510) 740-0220  
[www.michaans.com](http://www.michaans.com)  
[info@michaans.com](mailto:info@michaans.com)