
MICHAAN'S AUCTIONS

Auctioneers & Appraisers



Gallery Auction
November 9, 2019
10am



Gallery Auction

*featuring fine art, furniture,
decorative arts, Asian art &
jewelry*

**Saturday, November 9, 2019
10am**

Previews

Sunday, November 3, 9am to 5pm

Friday, November 8, 12pm to 5pm

Saturday, November 9am to end of auction

Decorative Arts and Furniture: Lots 1 - 126

Collectibles: Lots 130 - 132

Fine Art: Lots 140 - 211

Jewelry and Timepieces: Lots 220 - 358

Asian Works of Art: Lots 370 - 598

Copyright Notice

No part of this catalog may be reproduced, stored in a retrieval system or transmitted by any form or by any means, electronic, mechanical, photocopying, recording or otherwise, without the prior written permission of Michaan's Auctions.

Michaan's Auctions bond # 71393954

Front cover: Lots (clockwise from left) Lot 168, 409, 328, 112

Back cover: Lot 94

Michaan's Auctions

2751 Todd Street
Alameda, CA 94501
Phone: (800)380-9822 or
(510) 740-0220
Fax: (510) 749-7517
www.michaans.com
info@michaans.com

Inquiries

Automobiles

Desman Coronado
(510) 227-2515
desman@michaans.com

Asian Art

Annie Zeng
(510) 227-2536
annie@michaans.com

Coins, Stamps & Ephemera

Michael Rosenberg
(510) 227-2502
mrosenberg@michaans.com

Collectibles & Ephemera

Daniel Elizalde
(510) 227-2510
daniel@michaans.com

Fine Art

Kyrah Leal
(510) 227-2519
kyrah@michaans.com

Furniture & Decorative Arts

Jill Fenichell
(510) 227-2524
jill@michaans.com

Jewelry

Elise Coronado
(510) 227-2570
elise@michaans.com

View this catalog, additional photos and condition reports online at www.michaans.com.

Photography by Jeffrey Lee, James Strowe and Josef Kravitz



Estimate:
\$400 / \$600

1
Fish Fossil in Two Pieces, Vincifer Comptoni.
Santana Formation, Ceara, Brazil. Late Jurassic-Early Cretaceous. Full length of the fish is represented. {Approximate dimensions: Larger half 3 3/4 high x 23 1/4 inches long, smaller half 2 1/2 high x 22 3/4 inches long.}
Condition: Likely addition of later scales to the tail on the larger half.



Estimate:
\$300 / \$400

4
Ten Danish Smoking Pipes, Assorted Burlwood and Other Woods.
Comprising Bjarne unique shape, two Knute unique shapes, Celius Fantasy unique shape, Leif Royal 5, Danish Sovereign 335, Danish Sovereign 390, Royal Danish 936, Karl Erik unique shape, Nording 3. Includes a three pipe stand and a single pipe stand.
Condition: Some mouth pieces with significant wear, bowls with light charring, some with charring to the bowl edges.



Estimate:
\$500 / \$800

2
Silver Inlaid Flintlock Blunderbuss, Possibly Ottoman.
19th century. Brass capped stock and brass trigger housing, the barrel with silver inlay. Possible illegible marking to the top of the barrel. {Approximate dimensions: 18 1/2 inches long.}
Condition: Loss to the wood under the barrel. Missing the ramrod. Overall wear is age appropriate.



Estimate:
\$400 / \$600

5
"Die Olympischen Spiele" Stereoscopic Book.
Heinrich Hoffmann (1885-1957); and Ludwig Haymann Die Olympischen Spiele 1936 photobook Germany: Raumbild-Verlag Otto Schönstein, 1936. Includes Stereoscopic viewing glasses housed in pocket on inside front cover. 100 stereoscopic prints: 75 housed in pockets on rear cover, 25 mounted to the interior pages. {Approximate dimensions, 11 3/4 x 8 1/4 inches}.
[Condition: Handling dents, some minor discoloration to cover].



Estimate:
\$300 / \$400

3
Fifteen Italian Made Smoking Pipes.
Various; European. Circa 2000. Comprising a Savinelli Capri root briar 622; Savinelli Bent Bob's 633; Lorenzo Elba Imperia 9695; Baronet Bruyere 616; Uncle Paul 1378; two Peter Kent Gibraltar billiard pipes; Cesone Livorno 121; Brebia 6007; Brebia 8003; Estella 131; Voyageur 198; Voyageur 1017; 'Italian Import' - marked bent Dublin, and an unmarked bent apple. Teak stand for two pipes included.
Condition: Lightly used, with minor marks to the mouthpieces and light charring to the bowls.



Estimate:
\$300 / \$500

6
Vintage Teddy Bear.
Likely first quarter 20th century. Firm conical body with light brown mohair fur and brown thread used to define the nose, mouth, and paws. Glass eyes. Jointed limbs and head. The feet are slightly pointed. Rattler loose to interior.
No apparent markings.
{Approximate dimensions: 28 high x 14 inches wide.}
Condition: Some losses to fur, especially around the joints and back of the legs. The ears have possibly been reattached, with the thread becoming loose. A few small tears in the seams. Wear to the bottom of the feet. Bulge in the upper back.



Estimate:
\$300 / \$500

7
Silver Judaica Lot.
Germany.
Circa 1900.
Comprising a German .800 silver Adolf Mayer menorah, small German .800 silver Torah breastplate, and a unmarked silver-metal Kiddush cup with inscription. Menorah marked, 'crescent, crown, 800, A over M mark'. Breastplate marked, '800, crescent, crown'. {Approximate weighable silver: 8.3849 troy oz.} {Approximate dimensions: Menorah 8 1/2 high x 8 inches wide, breastplate 3 1/8 high x 1 7/8 inches wide, cup 8 1/2 high x 4 1/4 inches diameter.}
Condition: Tarnish, some corrosion to the cup.



Estimate:
\$300 / \$500

8
Five Sterling Silver Christening Cups.
Comprising a Walter, Michael & John Barnard with Robert Dubock cup with 'Frederick Belcher June 17th 1897', Alexander Macrae cup with incised horizontal decoration, Shreve & Co. hammered cup with 'Robert Powell Chandler' and small portrait, W.J. Braische & Co. cup with 'JWM' monogram and '1870 -1895 June 8th J.W.M. from H.H.M.' dedication to the bottom.
All pieces with appropriate markings. Barnard cup with 'd' 1899 date mark, Macrae cup with 'n' 1868 date mark. {Approximate weighable silver: 22.2564 troy oz.}
Condition: Very minor tarnish, light surface wear.



Estimate:
\$300 / \$500

9
Five Sterling Silver Repousse Boxes Including Gorham.
Comprising a Whiting oval hinged lid box with 'LM' monogram, Bailey Banks, & Biddle round box with 'Loraine May 10, '92' to the lid, Gorham rectangular hinged lid box with monogram to the lid, Mauser MFG Co. heart shape hinged lid box with monogram to the lid, and a small Gorham heart shape box. Whiting box with Whiting griffin mark, Sterling, 4107. BBB box with Bailey Banks & Biddle, 90, S in oval, 925 in shield, BBB in oval, 925 circle 1891 mark. Gorham box with Gorham marks, Sterling, 390, crescent, Spaulding & Co. Mauser box with unicorn mark, Sterling, 925/1000 fine, 1607. Gorham heart box with Gorham marks, Sterling, 55. {Approximate weighable silver: 18.3784 troy oz.} {Approximate dimensions: Whiting oval 2 1/4 high x 5 1/2 wide x 3 1/2 inches deep. BBB round 2 3/4 high x 3 1/4 inches diameter. Gorham rectangular 1 1/4 high x 4 1/2 wide x 2 inches deep. Mauser heart 1 1/2 high x 2 3/4 wide x 2 3/4 inches deep. Gorham heart 1 1/4 high x 2 1/2 wide x 2 1/4 inches deep.}
Condition: Very light wear overall.



Estimate:
\$300 / \$500

10
Lot of Sterling Silver Including a Whiting Basket.
Comprising a Whiting fixed handle basket with scalloped rim, Frank Herschede tea caddy, Gorham hand-mirror with 'ABG' monogram, William B. Kerr & Co. Oval frame with monogram, another oval frame with unidentified maker.
All pieces with appropriate marks. {Approximate weighable silver: 22.035 troy oz.} {Approximate dimensions: Basket 7 high x 11 wide x 8 1/2 inches deep, tea caddy 4 3/4 high x 2 1/2 inches diameter, mirror 9 1/2 high x 6 3/8 inches wide, Kerr frame 8 1/4 high x 6 inches wide, other frame 7 3/4 high x 5 3/4 inches wide.}
Condition: Very good, light wear.



Estimate:
\$300 / \$400

11 International Sterling Silver Five Piece Vanity Set.
Neoclassical motif with 'N' monograms. Comprising a hand-mirror, brush, comb, and a nail buffer with undertray.
All pieces marked 'International Sterling'.
{Approximate dimensions: Mirror 17 7/8 high x 4 7/8 inches wide, brush 11 5/8 high x 3 inches wide, comb 7 1/2 inches wide, nail buffer 5 1/4 inches wide, undertray 7 1/4 inches wide.}
Condition: Minimal tarnish and wear. Some loss of the finish under the bristles of the brush, evidence of use to the nail buffer.



Estimate:
\$300 / \$500

13 Various Sterling Silver Flatware and Serving Pieces Including Gorham and Wallace.
Comprising a Gorham gold wash ladle, Gorham slotted ladle, Wallace ladle, Kirk & Sons bon-bon spoon, Braverman & Levy ladle, Watrous MFG. Co. strainer with wood handle, Hamilton & Diesinger meat fork, twelve J.S. Caldwell & Co. demitasse spoons, and a Stieff bon-bon spoon.
All pieces with appropriate marks.
{Approximate weighable silver including wood handle: 21.7506 troy oz.}
Condition: Light wear, very good overall.



Estimate:
\$300 / \$400

12 Lot of Sterling Silver Hollowware Including Tiffany and Shreve.
Comprising a Tiffany & Co. sugar bowl and creamer with monograms, two Shreve & Co. salt cellars with two salt spoons, BSC marked sugar bowl and creamer with monograms. (8 pieces total).
Tiffany pieces marked, 'Tiffany & Co., Makers, Sterling Silver, 22638, M. Salt cellars marked with 'Shreve & Co., Sterling, 2774, Shreve marks, spoons marked, 'Shreve & Co. Sterling', BSC pieces marked, 'Sterling, 328, BSC in box (possibly Barbour Silver Company for International).
{Approximate weighable silver: 14.9219 troy oz.}
{Approximate dimensions: Tiffany sugar 2 1/8 high x 4 3/8 inches wide, Tiffany creamer 2 3/8 high x 3 1/8 inches wide, salt cellars 1 1/2 high x 2 1/2 inches diameter, BSC sugar 3 1/2 high x 4 inches wide, BSC sugar 3 high x 4 5/8 inches wide.}
Condition: Very good, light wear.



Estimate:
\$300 / \$400

14 George W. Shiebler & Co. Sterling Silver Tray.
New York.
Circa 1890.
Oval form with pointed ends, decorated with chased floral sprig motif along the edge. 'AM' monogram to the center.
Markings to underside, 'Shiebler S wing mark, Sterling, 5285'.
{Approximate weighable silver: 3.9623 troy oz.}
{Approximate dimensions: 1 1/4 high x 9 1/2 wide x 2 7/8 inches deep.}
Condition: Light surface scratches.



Estimate:
\$600 / \$900

15 Shreve & Co. Five Piece Sterling Silver Tea Set.
Comprising a coffee pot, teapot, lidded sugar bowl, creamer, and a waste bowl, all decorated with chased floral trim and 'CWS' monograms. Both pots with wood handles.
Markings to underside read, 'Shreve & Co. San Francisco Sterling'.
{Approximate weighable silver including wood handles: 40.2132 troy oz.}
{Approximate dimensions: Coffee pot 8 1/2 inches high, teapot 6 inches high, sugar bowl 5 inches high, creamer 3 3/4 high, waste bowl 3 inches high.}
Condition: Several very small dents, very light surface wear.



Estimate:
\$1,200 / \$1,500

**16
Lunt Sterling Silver
'Eloquence' Pattern Flatware
Set.**

Massachusetts.
Introduced in 1953.
Comprising ten dinner knives, ten butter spreaders, ten dinner forks, ten salad forks, ten soup spoons, ten teaspoons, tablespoon, pierced tablespoon, buffet serving spoon, gravy ladle, cream ladle, sugar spoon, meat fork, pickle fork, salad serving fork, sugar tongs, carving fork and knife, pie server. (73 pieces total.).
Marked, 'Lunt, Sterling, Eloquence'.
{Approximate weighable silver: 80.2579 troy oz.}.
Condition: Minor tarnish, some surface wear.



Estimate:
\$800 / \$1,200

**19
Reed & Barton 'Marlborough'
Pattern Sterling Silver
Flatware.**

Massachusetts.
Pattern introduced in 1906.
Comprising eight dinner knives, eight butter spreaders, sixteen dinner forks, eight salad forks, eight soup spoons, sixteen teaspoons, two tablespoons. (66 pieces total.).
Marked, 'eagle, R in shield, lion rampant, Sterling'.
{Approximate weighable silver: 63.9871 troy oz.}.
Condition: Minimal tarnish, light surface wear.



Estimate:
\$1,200 / \$1,500

**17
Lunt 'Rose Elegance' Pattern
Sterling Silver Flatware.**

Massachusetts.
Pattern produced from 1958-1997.
Comprising twelve dinner knives, twelve hollow butter spreaders, twelve dinner forks, twelve salad forks, eleven oval soup spoons, 25 teaspoons, tablespoon, pierced tablespoon, gravy ladle, meat fork, master butter knife, and a pie server. (90 pieces total.).
Marked, 'C in circle, Lunt, Sterling'.
{Approximate weighable silver: 80.0893 troy oz.}.
Condition: Minimal wear.
Silver tray available.



Estimate:
\$800 / \$1,200

**20
International Sterling Silver
'Trousseau' Pattern Flatware.**

With 'J' monograms. Comprising twelve dinner knives, twelve butter spreaders, twelve dinner forks, twelve salad forks, twelve teaspoons, two tablespoons, gravy ladle, jelly server, pie server, pickle fork, and sugar tongs. (67 pieces total.).
Marked, 'International, Knight's head mark, Sterling, Pat. 1933'.
{Approximate weighable silver: 62.4696 troy oz.}.
Condition: Tarnish, very minor surface wear.



Estimate:
\$1,400 / \$1,700

**18
Gebruder Koberlin German
800 Silver Flatware Set.**

Döbeln, Germany.
Comprising twelve dinner knives, twelve fish knives, twelve dinner forks, twelve salad forks, twelve fish forks, twelve tablespoons, twelve teaspoons, and eleven dessert spoons. (95 pieces total.).
Marked, '800, crescent moon, crown, G over K with crossed keys'.
{Approximate weighable silver: 93.9836 troy oz.}.
Condition: Minor wear and tarnish throughout.
Box available.



Estimate:
\$1,400 / \$1,700

**21
Gorham and Durgin Sterling
Silver 'Fairfax' Pattern
Flatware.**

Most pieces with 'M' monogram. Comprising ten dinner knives, eleven fruit knives, twelve butter spreaders, eleven dinner forks, six salad forks, twelve larger salad forks, four fish forks, twelve seafood forks, eight strawberry forks, seventeen teaspoons, six gold-wash chocolate spoons, three tablespoons, gravy ladle, cream ladle, jelly spoon, casserole spoon, small jelly spoon, meat fork, sugar tongs, cheese server, two carving sets of various size, poultry shears, knife sharpener. Additional sterling Towle sugar tongs and sterling teaspoon. (127 pieces total.)
Pieces with both Gorham and Durgin marks. The pattern matches flawlessly.
{Approximate weighable silver: 103.5259 troy oz.}.
Condition: Rust to shears and carving sets. Some tarnish and surface wear.



Estimate:
\$300 / \$400

**23
Six Small Glass Bottles with
Sterling Silver Overlay.**

Various shapes and sizes. Three green and three clear. One clear bottle with a monogram to the stopper, another clear bottle with 'Alice' to the body, one green bottle with an 'AM' monogram to the body. Gorham marks to one clear bottle, with D1556. Gorham marks to large green bottle, with 999/1000 D942. 'Alice' bottle marked Sterling. Small green bottle marked Sterling. 'AM' green bottle marked Patented, G70, 999/1000, Fine, Alvin Mfg. Co. mark. {Approximate dimensions: Largest green bottle 5 1/2 inches high, 'AM' medium green bottle 4 3/8 inches high, small green bottle 3 1/2 inches high, 'Alice' clear bottle 4 1/2 inches high, monogrammed stopper clear bottle 4 inches high, round clear bottle 4 inches high.}.
Condition: Very small area of damage to the overlay on the small round clear bottle. Miniscule dent to the 'AM' bottle. Condition is very good overall.



Estimate:
\$300 / \$400

**22
Seven Round Glass Jars with
Sterling Silver Lids.**

Various sizes, most glass with cut or etched decoration, and the lids with repoussé and engraved decoration. All lids marked with Sterling.
{Approximate weighable silver: 8.0932 troy oz.} {Approximate dimensions: Largest 2 7/8 high x 5 inches diameter, smallest 1 1/2 high x 2 1/4 inches diameter.}.
Condition: Minimal tarnish and wear.



Estimate:
\$300 / \$400

**24
Purple Glass Decanter with a
Silver Stopper.**

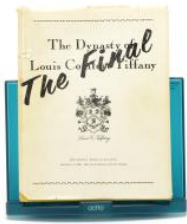
Decagonal form with an 800 silver mounted mouth and stopper. Markings to neck, '800, possible chalice in circle mark, two additional illegible marks to the stopper'. {Approximate dimensions: 11 high x 3 inches diameter.}.
Condition: Miniscule chips around the foot, minimal surface scratches, white residue to the interior.



Estimate:
\$1,500 / \$1,800

**25
Tiffany Yellow Pastel Favrile
Glass Centerpiece Bowl.**

New York.
Circa 1920-1930.
Slightly scalloped edge with a wide and flat rim, set on a round foot. Yellow-green pastel glass rim, with bands of the same color emanating from the center.
Marked on underside: L.C. Tiffany - Favrile, 1928.
{Approximate dimensions: 4 high x 15 3/4 inches diameter.}.
Condition: No apparent chips, cracks, or repairs. Miniscule dark mark to the rim. Minor wear to the bottom.



Estimate:
\$300 / \$500

26
Henry Winter.
1971,
'The Dynasty of Louise Comfort Tiffany (The Final)',
Yellow hardcover with dust-cover.
Signature to the first page.
Condition: Wear to the dust-cover, corners, and edges.



Estimate:
\$300 / \$400

29
Archimede Seguso Murano Glass Vase.
Venice, Italy.
Archimede Seguso (Italian, 1909 -1999). Slighted flared mouth with a tapered neck and a round body, blue and teal swirl.
Signed to bottom, 'Archimede Seguso, Murano'.
{Approximate dimensions: 11 1/2 high x 7 1/2 inches wide.}
Condition: Shallow but long scratch to the body.



Estimate:
\$300 / \$500

27
A Collection of Five Murano Glass Table Decorations.
Venice, Italy.
Comprising a blue swirl and gold glass candlestick pair, a swirled blue glass with gold accent trophy form vase, a white and gold decorated glass vase with dolphin form handles, and a small white swirl and gold glass vase with a dolphin form stem.
One candlestick with 'La Fenice Murano' sticker.
{Approximate dimensions: Candlesticks 13 1/8 inches high, blue glass vase 15 inches high, white vase 13 7/8 inches high, small white vase 6 7/8 inches high.}
Condition: Excellent overall, no apparent chips, cracks, or repairs.



Estimate:
\$300 / \$500

30
Italian Hand-Painted Glass Vase.
Italy.
Stepped mouth which tapers into a wide and round body. Clear glass painted with a blue and gilt scale pattern.
Blue painted mark to the bottom is mostly illegible, 'Gio Italia' can be read.
{Approximate dimensions: 13 high x 17 inches diameter.}
Condition: Very minor paint loss throughout.



Estimate:
\$300 / \$400

28
Lot of Crystal Champagne Flutes, Murano and Speck of Blue.
Comprising six Murano flutes and twelve blue accented glasses. The Murano glasses with etched decoration, gilt flecks, and twisted stems. The blue accented glasses with blue glass where the stem meets the foot, and faint vertical blue stripes.
{Approximate dimensions: Murano flutes 10 inches high, blue flutes 8 inches high.}
Condition: Small chip to blue glass rim.



Estimate:
\$400 / \$600

31
Collection of Rosenthal 'Calice' Studio-Line Stemware and Barware.
Selb, Germany.
Green Calice set comprising a decanter, eight brandy glasses, twelve tall sherberts, six sherry glasses, and seven cordial glasses. With five unassociated studio-line textured tumblers.
All pieces with acid etched marks. Some with black studio-line stickers.
{Approximate dimensions: Brandy 6 1/4 high, sherberts 7 3/8 inches high, sherry 7 3/4 inches high, cordials 7 3/8 inches high, tumblers 4 1/4 inches high.}
Condition: Miniscule chip to one cordial rim, several tumblers with small chips to the rim, very good overall.



Estimate:
\$300 / \$400

**31A
Lot of Steuben and Lalique
Animal Figures.**

Comprising a Lalique pigeon, Lalique swan in dish, Steuben chipping bird, Steuben owl, and a Steuben mouse.

All pieces with the appropriate marks.

{Approximate dimensions: Pigeon 3 1/2 inches high, swan 2 1/4 high x 3 3/4 inches diameter, chipping bird 3 inches high, owl 2 1/2 inches high, mouse 2 3/8 inches high.}

Condition: No apparent chips or breaks. Light wear to some bottoms.



Estimate:
\$300 / \$400

**34
Two Pink Porcelain Items with
Silver Overlay.**

Comprising a Sevres style pitcher with a narrow neck, wide round body, and a foliate motif overlay; and an Eamco vase with a narrow neck and a floral overlay design.

Green crossed L mark to the pitcher underside. Black Eamco mark to the vase, Sterling to the overlay.

{Approximate dimensions: Pitcher 6 1/4 high x 4 1/4 inches diameter, vase 7 3/4 high x 2 1/2 inches diameter.}

Condition: Very good condition, minimal wear.



Estimate:
\$300 / \$400

**32
Art Nouveau T&V Limoges
Pink Porcelain Silver Overlay
Vase.**

Circa 1900.

Interlaced silver overlay pattern on a soft pink ground.

Markings to underside, 'T&V Limoges France in green, Electrolytic Trenton NJ Eamco mark in black, 0107 impressed'.

{Approximate dimensions: 9 3/8 high x 3 1/2 inches diameter.}

Condition: Light wear to the bottom.



Estimate:
\$300 / \$400

**35
Set of Lenox 'Hayworth' China.**

Comprising an oval platter, twelve dinner plates, twelve salad plates, nine bread and butter plates, eleven saucers, and twelve teacups.

All pieces with markings to undersides, 'Lenox mark, Lenox, Hayworth, Lenox Inc., Made in U.S. A.

{Approximate dimensions: Platter 16 wide x 11 3/4 inches deep, dinner plates 10 3/4 inches diameter, salad plates 8 1/4 inches diameter, bread plates 6 1/2 inches diameter, saucers 6 inches diameter, cups 3 1/4 inches high.}

Condition: Very good, minimal wear overall.



Estimate:
\$300 / \$400

**33
Japanese Celadon Mt. Fuji
Dish with Shreve & Co.
Sterling Silver Overlay.**

White glaze abstracted depicting Mt. Fuji on a celadon ground, with a floral silver overlay rim.

Four Japanese Kanji in blue to the underside, 'Shreve & Co. Sterling' to the rim.

{Approximate dimensions: 8 3/8 inches diameter.}

Condition: Very good, minimal wear.



Estimate:
\$300 / \$400

36
Royal Worcester 'Cradley' Partial Dinner Service.
Stoke, UK.
Second half 20th century.
Comprising eight dinner plates, eight luncheon plates, eight salad plates, thirteen bread and butter plates, seven cream soup bowls with saucers, nine teacups with five saucers, and six demitasse cups with eight saucers.
Marking to underside reads, 'Cradley, Circa 1768, Reproduction of Early Worcester, Royal Worcester Mark'.
{Approximate dimensions: Dinner plates 10 1/2 inches diameter, luncheon plates 9 1/4 inches diameter, salad plates 8 1/8 inches diameter, bread plates 6 1/4 inches diameter, cream soup saucers 5 3/4 inches diameter, demitasse saucers 4 5/8 inches diameter.}
Condition: Light surface wear with very minor gilt and paint loss. Chip to luncheon plate edge. Chip and crack to teacup saucer. Hairline crack to teacup.



Estimate:
\$400 / \$600

37
Wagner German Porcelain Portrait Plate.
Late 19th century/early 20th century.
Central portrait after Joseph Karl Stieler depicting Alexandra Princess to the King of Bayern; framed by a gilt inner border accented with gilt and light blue beads, surrounded by a white ground with floral and gilt swags, with a blue outer border decorated with red accents.
Marking to the back in red reads 'Alexandra, Königl. Prinsessin van Bayern, nach J. Stieler, Schönheit-Galerie i.d. Residenz. München.'
Portrait signed 'Wagner'
{Approximate dimensions: 9 3/8 inches diameter.}
Condition: Very minor wear to the bottom.



Estimate:
\$350 / \$500

38
19th Century Copleland White Glazed Porcelain Figural Centerpiece.
Circa 1875.
Two cherubic figures holding up a large fishnet, with various fish resting on the base below the net.
Small blue Copeland 'CC' mark to the underside.
{Approximate dimensions: 9 1/2 high x 12 5/8 wide x 6 3/4 inches deep.}
Condition: Multiple repairs to breaks on one figure. Loss to one fish tail, and two apparent cracks to other fish. The piece needs a thorough cleaning.



Estimate:
\$400 / \$600

39
Carl Thieme Dresden Porcelain Painted and Applied Figural Urn.
Dresden, Germany.
Circa 1900.
Four putti applied to the top, with a floral and fruit garland, toward the shoulder; above a painted mythological scene to one side and a floral arrangement to the other.
Blue T with cross mark to the underside, 531 impressed.
{Approximate dimensions: 20 high x 14 wide x 11 inches deep.}
Condition: Repair to the mouth, with loss. Minor loss to applied flowers and leaves. Repair to putti wings and feet.



Estimate:
\$500 / \$800

40
Pair of Meissen Style Porcelain 'Schneeballen' Porcelain Decorative Vases with Stoppers.
Each encrusted with small white flowers all over, further decorated with a raised fruit branch motif.
Stoppers with pink rose finials.
Holes to the bottoms.
Blue crossed swords marks to the undersides.
{Approximate dimensions: 13 1/4 high x 7 inches diameter.}
Condition: Some loss to the floral encrusted surface, finials, and fruit branch motif. Some apparent repairs to the leaves.



Estimate:
\$500 / \$800

41
Meissen Pair of Figural Sweetmeat Bowls.
Dresden, Germany.
First quarter 20th century.
Female and male figures reclining with oval floral encrusted bowls, on blue and pink painted vases, parcel gilt throughout.
Blue crossed sword marks to the undersides. '2858' inscribed to the female underside, 'No. 2863' inscribed to the males underside. {Approximate dimensions: 7 high x 12 1/2 wide x 6 1/2 inches deep.}.
Condition: Loss/repair to female's toes. Repair chip to the male's bowl, and significant paint marks to the bowl. Minor loss to encrusted flowers. A thorough cleaning is necessary.



Estimate:
\$400 / \$600

44
Rookwood 'Three Women' Vase #2221.
Cincinnati, Ohio.
Circa 1918.
Cylindrical vase with a flared mouth and three women standing along the sides in relief, blue glaze.
Marked to underside with Rookwood mark, XVIII, 2221, P.
{Approximate dimensions: 12 high x 6 1/2 inches diameter.}.
Condition: Very minor wear to the bottom, a few small white scuffs around the bottom edge.



Estimate:
\$600 / \$800

42
Continental Suite of Art Nouveau Style Loie Fuller Bisque Dancing Figures, Possibly Limoges.
White undecorated bisque figures, comprising two figures holding a sash, figure with tambourine, and two figures with raised hands.
No apparent makers marks.
{Approximate dimensions of largest: 12 3/4 high x 9 1/4 inches wide x 3 3/4 inches deep.}.
Condition: One of the sash figures with repaired arms and sash.



Estimate:
\$300 / \$400

45
Pair of Rookwood Figural Reader Bookends #2184.
Cincinnati, Ohio.
Circa 1920.
Reclining reading figures set in books, with a blue glaze.
Marked to underside with Rookwood mark, XXI, 2134.
{Approximate dimensions: 6 high x 7 wide x 4 7/8 inches deep.}.
Condition: Very minor wear to the bottoms, no apparent cracks or breaks.



Estimate:
\$300 / \$400

43
Clarice Cliff 'Bizarre' Art Deco Pottery Articles, Lot of Three.
Circa 1930.
Comprising a dish with orange hearts, a bowl with a leaf motif, and a bowl with a floral motif.
All pieces with markings to undersides, 'Handpainted Bizarre by Clarice Cliff'. Both bowls with 'Wilkin Son Ltd. England', dish with 'Newport Pottery, England'.
{Approximate dimensions: Dish 9 inches diameter, leaf motif bowl 3 3/4 high x 8 inches diameter, floral motif bowl 3 1/8 high x 7 inches diameter.}.
Condition: Some minor paint loss to all pieces.



Estimate:
\$300 / \$500

46
Arts & Crafts Rookwood and Van Briggles Pottery Vases.
Rookwood vase with wide mouth, three handles, incised geometric decoration, and an orange to pale green glaze. Van Briggles vase with raised butterfly decoration, blue and teal glaze.
Rookwood vase with Rookwood mark, V, 810, V. Van Briggles vase marked Van Briggles, U.S.A.
{Approximate dimensions: Rookwood vase 6 3/4 high x 7 1/2 inches diameter, Van Briggles vase 4 high x 3 3/4 inches diameter.}.
Condition: Very small hairline crack to the Van Briggles vase. Cracking to both vases.



Estimate:
\$600 / \$800

47
Native American Fannie Nampeyo Hopi Pottery Vase.
Arizona.
Mid 20th century.
Short vase with a slightly flared mouth tapering into a bulging body, which gradually tapers towards the bottom. Dark brown and red geometric decoration on a beige ground.
Brown painted signature to the underside reads, 'Fannie Nampeyo'.
{Approximate dimensions: 5 3/4 high x 7 1/2 inches diameter.}
Condition: Minor paint loss with some inpainting. Light surface wear. No apparent chips, cracks, or repairs.



Estimate:
\$400 / \$600

48
Native American Fannie Nampeyo Hopi Pottery Vase.
Arizona.
Mid 20th century.
Short vase with a slightly flared mouth tapering into a bulging body, which gradually tapers towards the bottom. Dark brown and red geometric decoration on a beige ground.
Brown painted signature to the underside reads, 'Fannie Nampeyo'.
{Approximate dimensions: 5 3/4 high x 8 inches diameter.}
Condition: Various surface marks and minor paint loss, some with inpainting. No apparent chips, cracks, or repairs.
Letter explaining the gift included.



Estimate:
\$400 / \$500

49
Joy 'Second Frog Woman' Navasie Hopi Pottery Vase.
Arizona.
Joy Navasie (1919-2012). Vase with a slightly tapered cylindrical form with an inverted mouth, decorated with brown and red geometric decoration on a sandy ground.
Brown painted frog mark to the bottom.
{Approximate dimensions: 8 1/2 high x 6 inches diameter.}
Condition: Minor paint loss, with some apparent bleeding of the red painted decoration.



Estimate:
\$300 / \$400

50
Taxidermy Female Pheasant in Display Box.
Pheasant with brown and white plumage, in a naturalistic setting. Black painted box with silver trim.
{Approximate dimensions: 20 3/4 high x 29 1/4 wide x 8 inches deep.}
Condition: Some wear to the box including paint loss.



Estimate:
\$700 / \$1,000

51
French Art Deco Bronze Huntress, Signed.
Circa 1930.
Kneeling two-tone bronze huntress with a bow, set on a brown marble base.
Base signed 'D. Laurens'.
{Approximate dimensions: 17 high x 19 wide x 6 1/2 inches deep.}
Condition: Green patina to the skirt, cracking to the head. Very small chips to the marble base edge.



Estimate:
\$300 / \$400

52
Hungarian Art Deco Bronze Figure of a Female Dancer.
Early 20th century.
Nude female set in an oval white marble base.
Signed W. Tonzor (Likely Wesselényiné Tonzor Eszter), foundry mark önt. SZILLI.
{Approximate dimensions: 8 3/4 high x 6 wide x 2 3/8 inches deep.}
Condition: Minor chips and wear to the marble base.



Estimate:
\$400 / \$600

53
Bronze Stag on a Burl-Wood Pedestal.
Standing stag, with the four feet meeting at one point. Set on a maple burl pedestal.
No apparent signature.
{Approximate dimensions: Stag 26 inches high x 13 inches long, pedestal 24 1/4 high x 15 wide x 15 inches deep.}
Condition: Minor wear to the pedestal.



Estimate:
\$600 / \$800

54
Bronze Sculpture, Eagle Perched on a Rock.
The rock is painted green. Illegible signature to the back, possibly 'Molier'. {Approximate dimensions: 22 1/4 high x 11 1/2 wide x 12 1/2 inches deep.}. Condition: Very minor patina, minimal paint loss.



Estimate:
\$300 / \$400

55
Stone Bust of a Roman on a Black Marble Base After the Antique.
{Approximate dimensions: 22 1/2 tall x 8 1/2 inches wide.}.



Estimate:
\$300 / \$400

57
Ansonia Figural 'Mercury' Bronze Mantle Clock.
Circa 1890. Evidence of previous green and red pigment. Ansonia marks to the dial and movement reverse, patent date June 14, 81 (1881). {Approximate dimensions: 15 high x 16 wide x 7 1/2 inches deep.}. Condition: Loss to paint and patina throughout. Significant cleaning is needed.



Estimate:
\$600 / \$800

58
Neoclassical-Style Urn Form Garniture Pair.
Metal copper finish urns with sprig handles and an oak leaf motif to the body, resting on red marble bases, supported by four metal feet. The pieces are meant to be viewed from the front, as the marble backs are undecorated. {Approximate dimensions: 13 5/8 high x 7 1/4 wide x 6 inches deep.}. Condition: Some patina to the metal, small chips to marble corners.



Estimate:
\$400 / \$500

59
Aesthetic Movement Style Candelabra Pair.
White glass flowers and seven candleholders sprouting from an urn form, resting on a four footed base with a brass plinth supporting beneath. Brass and gilt metal. {Approximate dimensions: 27 1/2 high x 19 wide x 10 inches deep.}. Condition: Patina to metals, minor gilt loss. One pistil with an apparent repair.



Estimate:
\$500 / \$800

60
19th Century Egyptian Revival Style Bronze Figural Three Armed Candelabra.
Fourth quarter 19th century. Three candleholders stemming from the heads of Egyptian style standing female figures, standing on brass bases with white stone pedestals. {Approximate dimensions: 30 1/2 x 11 1/2 wide x 10 inches deep.}. Condition: Significant patina to the metal. Very small marks to the stone base, possibly from manufacturing.



Estimate:
\$600 / \$900

61
Neoclassical Style Urn Form Table Lamp Pair.
Metal urn forms decorated with figures in relief and figural handles, resting on red marble bases, supported by a brass plinths. Only meant to be viewed from the front and sides, the backs are undecorated. Lacking shades. {Approximate dimensions including harps: 31 high x 6 1/2 wide x 5 1/8 inches deep.}. Condition: Minor patina to brass. Minuscule chips to the marble.



Estimate:
\$300 / \$400

62
Bouillotte Toile Lamp.
Two light brass lamp with a black metal shade. Two decorative candleholders. 'Linderwriters Laboratories Inc.' sticker. {Approximate dimensions: 31 high x 17 1/2 wide x 8 inches deep.}. Condition: Patina to metal.



Estimate:
\$400 / \$600

63
Georgian Style Burl Wood Lap Writing Box and a Mahogany Burl Tea Caddy.

Lap desk with monogram to the top, with ebonized trim, opening to reveal an inset black gilt tooled leather surface with several compartments. The tea caddy with a blue felt lined lid, and two main compartments with blue painted interiors. Lap desk locking mechanism marked, 'Bramar, Patent, London'. {Approximate dimensions: Lap desk 6 1/4 high x 11 7/8 wide x 9 1/2 inches deep.}. Condition: Wear to lap desk ebonized trim around the lock. Cracking to the back. Tea caddy with light surface wear.



Estimate:
\$300 / \$400

64
Japanese Inlaid Hardstone Desk Globe with Clock and Thermometer.

Japan. Small hardstone globe mounted in a gilt-metal base, with three small clocks and a thermometer below. The globe can turn on an X-axis, while the whole piece can also turn on an X-axis. Clocks marked 'Japan Movt.'. {Approximate dimensions: 11 1/4 high x 7 7/8 inches diameter.}. Condition: Very minor patina and wear to the gilt metal.



Estimate:
\$400 / \$600

65
Suite of Neoclassical Style Carved Fruit Garlands.

One pair in the form of vertically hanging swags, the other pair in a semi-circular form. {Approximate dimensions: Vertical pair 41 inches high, semicircular form 13 high x 23 1/2 inches wide.}. Condition: Minor surface wear to the finish. Minor damage to the bow of one vertical swag.



Estimate:
\$300 / \$500

66
Italian Baroque Style Giltwood Bracket.

Carved with an acanthus leaf motif. {Approximate dimensions: 12 1/4 high x 12 1/2 wide x 9 1/4 inches deep.}. Condition: Minor losses to gilt. Thin, long crack in the plaster between the pediment and acanthus support on both sides.



Estimate:
\$300 / \$500

67
Pair of Modernist Brass Candlesticks.

Candleholders set on a pivoting drop form, with narrow stems intersected by glass bulbs, terminating in a round stepped foot. {Approximate dimensions: 20 1/4 high x 5 inches diameter.}. Condition: Some corrosion to the brass.



Estimate:
\$500 / \$800

68
Framed Victorian Needlework.

Circa 1890. Man in fine clothes standing next to his horse, with two dogs accompanying, set in a landscape. One dog is raised to create depth. Some beaded accents. No apparent signature. {Approximate dimensions: 38 3/4 high x 32 inches wide.}. Condition: Wear to the frame, which is lacking any backing.



Estimate:
\$600 / \$800

69
Two Louis Vuitton Purses.

Both with shoulder straps and signature Louis Vuitton Print. One bag with a rounded bottom, the other with a more square shape. Both marked 'LV, Louis Vuitton, Paris, made in France'. {Approximate dimensions not including straps: Rounded bottom 7 1/2 high x 8 3/4 inches wide, square bag 8 3/8 high x 10 1/4 inches wide.}. Condition: Very minor wear to both bags.



Estimate:
\$400 / \$600

70
Marc Jacobs Leather Handbag.
Burgundy leather exterior, with a purple suede interior. Gilt metal strap and fittings. The bag is perforated. Leather tassels. 'Marc Jacobs, Made in Italy' tag in the interior.
{Approximate dimensions: 9 high x 14 inches wide.}.
Condition: The leather under the flap is purple, showing the bags original color. It has faded to a nice burgundy. Very minor signs of wear. With Marc Jacobs purse bag.



Estimate:
\$2,000 / \$3,000

71
Fendi Long Fur Coat.
Astrakhan lamb. Lined with dark brown silk with words "Fendi Alta Moda Pronta" repeated. Label reads Fendi for Neiman Marcus, Made in Italy. Fendi logo above.
{Approximate dimensions: 54 inches long.}.
Condition: Hanging loop has been sewn back on.



Estimate:
\$500 / \$800

72
Blackglama Dark Ranch Mink Coat.
Lined with a black and silver curved stripe pattern. Two exterior pockets and one interior pocket. Blackglama label with serial number S1164115, Salon Collectoin Canada's Finest label. RB monogram to the coats lining.
{Approximate dimensions: 41 inches long, sleeves 26 inches long, size 10}.
Condition: Excellent.



Estimate:
\$400 / \$600

73
Two Fur Coats, Fox and Mink.
White fox coat with a pink monogram to the lining. Dark brown mink coat with a fox fur collar. Fox fur coat with 'Herbert's Furs' label.
{Approximate dimensions: Fox 31 inches long, mink 26 inches long.}.
Condition: Very minor wear to lining, excellent overall.



Estimate:
\$400 / \$600

74
Three Framed 60s Rock Posters Including Moscoco.
Comprising Matrix 1/10-15/67 Neon Rose Moscoco Miller Blues Band poster, Matrix 1/17-22/67 Neon Rose Moscoco Big Brother and the Holding Company poster, and a Quicksilver Messenger Service at the Continental Ballrom '67 poster. Miller and Big Brother both signed Moscoco Lower right, Neon Rose '67 lower left.
{Approximate dimensions of frames: 25 1/2 high x 21 1/4 inches wide.}.
Condition: Wear to frames, posters with minimal wear.



Estimate:
\$400 / \$600

75
B.J. Stevenson Abstract Stone Sculpture.
Belmont, CA
1995.
Orange hardstone with grooved holes cut through the top and sides. On a black granite base. Signed BJ Stevenson '95.
{Approximate dimensions: 19 1/4 high x 12 wide x 12 inches deep.}.
With 'Being Creators' BJ Stevenson process book.
Condition: Small chip to the top, repair to the middle hole.



Estimate:
\$800 / \$1,200

76
Large Thai Style Gilt Papier-Mache Decorative Urn.
Lid with a winged creature finial. The body encrusted with small mirrors and glass stones. Black lacquer interior with a central dividing tray. Resting on a tall, round, black lacquer painted wood pedestal.
{Approximate dimensions with included pedestal: 74 high x 20 inches diameter.}.
Condition: Minor peeling, cracking, and loss to gilt.



Estimate:
\$3,000 / \$5,000

77
Patricia Payne Bronze and Steel Spread Winged Eagle Garden Sculpture.
Alameda, California.
C. 2005
{Approximate dimensions: 108 high x 57 wide x 25 inches deep.}.
Condition: Significant rust and patina throughout.



Estimate:
\$600 / \$800

78
Patricia Payne Bronze and Steel Garden Sculpture: Young California Condor.

Alameda, CA.
Standing condor with wings spread wide. A spike to foot affixes to ground. Detachable wings.
{Approximate dimensions: 33 high x 70 wide x 33 inches deep.}
Condition: Significant rust and patina.



Estimate:
\$600 / \$800

81
Tekke Bokhara Wool Carpet.
Multi-medallion motif on a red ground, with white and blue decoration.
{Approximate dimensions: 14 feet 5 inches x 10 feet.}
Condition: Minimal wear. Some areas with apparent light stains, though a cleaning may solve the issue.



Estimate:
\$400 / \$600

79
Patricia Payne Bronze and Steel Garden Sculpture: Drunk Dog.

Alameda CA.
Human figure with dog's head, in curled position with a coat over its head, and a human hand.
{Approximate dimensions: 40 high x 14 wide x 30 inches deep.}
Condition: Significant rust and patina throughout.



Estimate:
\$500 / \$700

82
Turkish Rug.
Five central ivory medallions each with two swans, set on a dark blue ground with a dense brown and red foliate motif, with a red border.
{Approximate dimensions: 6 feet 2 inches long x 3 feet 5 inches wide.}
Condition: Minor loss to the fringe.



Estimate:
\$3,000 / \$5,000

79A
Pair of English Baroque Style Seated Lions.

Porous cement material, two lions seated on square rectangular plinths.
{Approximate dimensions: 47 high x 22 wide x 19 1/2 inches deep.}
Condition: Minor surface loss, overall weathering is apparent, narrow cracks to both plinths.



Estimate:
\$500 / \$700

83
Caucasian Tribal Rug.
Three central medallions on a red ground. Red, blue, brown, and cream.
{Approximate dimensions: 4 feet 6 inches x 2 feet 8 inches.}
Condition: Some fraying to the edges and ends. Slight fading of color.



Estimate:
\$400 / \$600

80
Persian Carpet.
Polychrome multi-medallion floral motif on a black ground, with a khaki main border.
{Approximate dimensions: 12 feet 3 inches long x 9 feet wide.}
Condition: There is evidence of previous moth habitation, though damage appears minimal. Very minor loss to the fringe on one side, and the edges are very slightly frayed.



Estimate:
\$500 / \$700

84
Tibetan Wool Rug.
Central medallion with two blue dragons, on an orange ground with a cloud motif, and a pink main border with a dark blue outer border.
{Approximate dimensions: 4 feet 9 inches x 2 feet 3 inches.}
Condition: Significant loss of color. Fringe on one side with red dye. Minor fraying to the edges.



Estimate:
\$600 / \$900

**85
Bibikabad (Hamadan) Wool Carpet.**
Iran.
Central cream medallion on a red ground with blue and white spandrels, with a cream main border. Floral motif throughout. Label to corner reads, 'Genuine Hand-Woven Oriental Rugs'.
{Approximate dimensions: 11 feet 11 inches x 8 feet 9 inches.}.
Condition: Loss to fringe, warping to the edges.



Estimate:
\$150 / \$200

**87B
Indian Aubusson Wool Carpet.**
Central green medallion on a cream ground, with a green main border, and foliate decoration throughout.
{Approximate dimensions: 8 feet 10 inches x 11 feet 9 inches.}.
Condition: Contact
gabe@michaans.com for condition information.



Estimate:
\$300 / \$500

**86
Sarouk Rug.**
Iran.
Dense floral motif on a red ground with a dark blue border. Small label read, 'Made in Iran'.
{Approximate dimensions: 7 feet x 4 feet 3 inches.}.
Condition: Later fringe.



Estimate:
\$300 / \$400

**87C
Egypt Sultanabad Wool Carpet.**
Multi-medallion foliate motif on a cream ground, with a red main border where the motif continues.
{Approximate dimensions: 8 feet x 11 feet 5 inches.}.
Condition: Contact
gabe@michaans.com for condition information.



Estimate:
\$300 / \$500

**87
Mahal Wool Rug.**
Iran.
Multi-medallion motif on a red ground with pale pink spandrels and main border, with blue inner and outer borders. Label to corner, 'Avakian Bros Inc'.
{Approximate dimensions: 6 feet 7 inches x 4 feet 3 inches.}.
Condition: Tearing to one corner, loss to fringe, slight warping to the edge.



Estimate:
\$150 / \$200

**87D
Romanian Kashan Wool Carpet.**
Foliate motif in pink, brown, cream, and red on a light blue ground, with a navy main border, pink inner and outer borders.
{Approximate dimensions: 9 feet 1 inch x 12 feet 6 inches.}.
Condition: Contact
gabe@michaans.com for condition information.



Estimate:
\$350 / \$500

**87A
Turkish Burdur Wool Rug.**
Foliate motif on a cream ground, with an orange main border, blue inner and outer borders.
{Approximate dimensions: 7 feet x 10 feet 2 inches.}.
Condition: Contact
gabe@michaans.com for condition information.



Estimate:
\$250 / \$400

**87E
Persian Bidjar Wool Carpet.**
Geometric foliate motif on a dark blue ground, with a pink main border where the motif continues.
{Approximate dimensions: 9 feet 1 inch x 11 feet 10 inches.}.
Condition: Contact
gabe@michaans.com for condition information.



Estimate:
\$150 / \$200

87F
Indian Arts & Crafts Design Wool Carpet.
Geometric foliate motif in green, pink, and yellow, on a black ground, with a cream main border where the motif continues.
{Approximate dimensions: 9 feet x 11 feet 7 inches.}
Condition: Contact gabe@michaans.com for condition information.



Estimate:
\$400 / \$600

91
Danish Taepper Ege Rya Rug.
Denmark.
Circa 1985.
Woven with high pile, in a design of abstract swirls of blue, ombre to ivory, on a green ground.
Taepper Ege leather tag.
{Approximate dimensions: 78 high x 56 inches wide.}
Condition: Excellent, minimal wear.



Estimate:
\$400 / \$500

88
Chinese Dragon Rug.
Two dragons with pearls on a beige ground, with a dark blue outer border.
{Approximate dimensions: 8 feet 9 inches long x 5 feet 1 inch wide.}
Condition: Some fading to the color, minor wear to the edges.



Estimate:
\$300 / \$400

91A
Two Animal Motif Pictorial Rya Rugs.
Circa 1985.
Various sizes with identical decoration. Abstracted flower on a blue ground, with an animal motif border on a tan ground.
{Approximate dimensions: Large rug 91 high x 61 1/2 inches wide, small rug 67 high x 42 1/2 inches wide.}
Condition: Minor fraying to the edges, significantly so to the larger rug's corner.



Estimate:
\$300 / \$400

89
Two Danish Taepper Ege Rya Rugs.
Denmark.
Circa 1985.
One with a peacock on yellow ground, the other with two phoenixes on a burgundy ground.
Both with leather 'Taepper Ege' tags.
{Approximate dimensions: Peacock 54 high x 38 inches wide, phoenixis 28 high x 57 inches wide.}
Condition: Unused, original tags. Minimal wear, excellent overall.



Estimate:
\$400 / \$600

92
Pair Baroque Style Brass Andirons.
First Half 19th Century,
Each baluster-form standard headed by an urn-form finial, above a leafy sphere form, raised on auricular scroll feet headed by a lion mask.
{Height 26 inches}



Estimate:
\$300 / \$400

90
Two Danish Taepper Ege Rya Rugs.
Denmark.
Circa 1985.
One with a standing clown on a cream ground, the other with a seated cat with a blue necklace on a brown ground.
Both with Taepper Ege leather tags.
{Approximate dimensions: Clown 43 high x 28 inches wide, cat 46 high x 28 inches wide.}
Condition: Unused, with original tags. A few loose threads to the clown rug.



Estimate:
\$500 / \$700

93
Louis XV-Style Gilt Framed Mirror.
Giltwood frame with shell and foliate carving.
{Approximate dimensions: 50 high x 59 inches wide.}
Condition: Minimal gilt loss, very good overall.



Estimate:
\$2,000 / \$3,000

94
Italian Venetian Rococo Giltwood Mirror.
Mid 18th century.
Giltwood frame with foliate motif, with mirrored panels in the frame. Crown with emanating shells.
{Approximate dimensions: 99 high x 50 inches wide.}
Provenance: Val Arnold, Los Angeles.
Condition: Some losses to wood carvings, including some to the crown. Fading/loss of gilt reveals the red and white beneath. Some clouding and corrosion to the mirrors.



Estimate:
\$2,000 / \$3,000

98
Italian Baroque-Style Patinated Gilt-Iron and Rock Crystal Twelve Light Chandelier.
Second half 20th century.
Decorated with a leaf motif, with large lusters and strands of rock crystal.
{Approximate dimensions: 43 high x 40 inches diameter.}
Condition: Significant loss to gilt, some minor bends to iron leaves.



Estimate:
\$300 / \$400

95
Art Nouveau Rectangular Wall Mirror.
Circa 1900.
Two-tone gilt wood frame with floral decoration to the corners.
{Approximate dimensions: 40 high x 20 1/2 inches wide.}
Condition: Minor cracking to the plaster layer, mainly in the corners.



Estimate:
\$1,300 / \$2,000

99
Scottish George III Oak Cased Tall Cased Clock by Blair Flight.
Scotland.
Circa 1774-1775.
Commemorating the marriage of Ja (me)s Smith and An(n) Mor(r)is, married in Perth July 31, 1775, listed in the wedding banns of parish number 387. Their names inscribed to the center of the center dial below the second hand. The solid mahogany case with arched panel door and base panel. The hood with stop-fluted columns on the clock's hood; the face with brass spandrels surrounding the enameled chapter ring and inner quarters circle, with fine peafowl engraved within circular cut-out.
Inscribed Blair Flight/ Perth toward lower dial face.
{Approximate dimensions: 85 high x 20 1/2 wide x 11 1/4 inches deep.}
Condition: Light scratches and marks to the dial. Later brass pulls. Some signs of previous woodworm. Overall wear is very good for the age.
Pendulum, two weights, and a key included.



Estimate:
\$400 / \$600

96
Large Shell and Coral Encrusted Framed Wall Mirror.
Rectangular form, the frame encrusted with various shells and coral.
{Approximate dimensions: 57 high x 37 inches wide.}
Condition: Looks to be very good, though loss is hard to gauge due to the dense nature of the shells and coral. Some glue is apparent.



Estimate:
\$500 / \$800

97
19th Century English Japanned Standing Lamp.
England.
Circa 1880.
Fluted stem on a square wood base with four feet. Painted blue with parcel gilt, and figural scenes painted to the base.
{Approximate dimensions with shade: 74 high x 21 inches diameter.}
Purchased from Sherry Morse Interiors, September 20, 1998, for \$3,827.88 including commission.
Condition: Minor paint loss, mainly to the painted scenes on the base.



Estimate:
\$300 / \$400

100
George III Mahogany Tilt-Top Tea Table.
Third quarter 18th century.
Round table set on a tripod pedestal base, with acanthus-decorated feet.
{Approximate dimensions: 28 high x 32 1/2 inches diameter.}
Condition: Two splits to the top. The piece has minimal wear for the age.



Estimate:
\$1,000 / \$1,500

101
Late 18th Century George III Mahogany Double-Pedestal Dining Table.
Late 18th century. Molded edge, brass-capped claw feet on casters. Two leaves. {Approximate dimensions: 29 1/2 high x 44 wide x 63 1/2 inches long, each leaf adds 19 1/2 inches in length.}. Condition: Fading to finish evidenced by darker leaves, very minor wear for the age.



Estimate:
\$700 / \$900

104
George III Mahogany Drum Table.
Late 18th/early 19th century. With tooled leather top, above a frieze of five drawers, on a turned column and four downswapped legs with brass caps and castors, inlaid stringing to top, drawer perimeters and legs. {Approximate dimensions: 29 1/2 high x 37 1/2 inches diameter.}. Condition: Significant wear to leather, which has old patchwork repairs. Condition is very good considering the age.



Estimate:
\$300 / \$500

102
18th Century George III Mahogany Pembroke Table.
Fourth quarter 18th century. Single drawer with a false drawer opposite. Square tapering legs set on casters. {Approximate dimensions: 29 1/2 high x 40 long x 47 1/2 wide with leaves extended.}. Condition: Bleaching, stains, watermarks, and wear to surface finish. Aside from the finish, wear is very good for the age.



Estimate:
\$400 / \$600

105
19th Century Renaissance Revival Side Chair Pair.
Dark stain wood; the top rail carved with a central face, flanked by two lions. Green riveted floral pattern upholstery. {Approximate dimensions: 41 3/4 high x 21 1/2 inches wide.}. Condition: Minor signs of wear, mainly to the lower legs.



Estimate:
\$400 / \$600

103
English William IV Oak Secretary Desk.
First half 19th century. The upper cabinet doors carved with arch door panels, over the drop front desk concealing an inset green leather writing surface and several small drawers and compartments, set above a shallow long drawer with two short beneath and two graduated long drawers below, all supported by bracket feet. {Approximate dimensions: 83 high x 39 wide x 21 inches deep.}. Condition: Repair to carving on the door panel. Later brasses. The central compartment in the desk doesn't open with any of the provided keys. Moderate wear overall but good condition for age. Keys available.



Estimate:
\$1,500 / \$2,000

106
18th Century Southern German Baroque Inlaid Walnut Desk.
Circa 1780. Serpentine front stepped top section with three drawers flanking a single door compartment above a slant front surface below, above three short drawers, resting on six baluster carved supports connected by a stretcher, all set on six bun feet. Inlaid decoration throughout, brass pulls and escutcheons. Worn brown velvet writing surface. {Approximate dimensions: 54 1/4 high x 45 1/4 wide x 26 inches deep.}. Condition: Veneer and inlay loss, some with repair. Some chips and loss to the foot. Evidence of previous wormwood damage to the supports. Various chipping and wear throughout. Key available.



107
Italian Rococo-Style Console Table.
 Later green painted top on a gilt wood base with two scrolled feet. Base with variously carved with foliate, scroll, and shell designs. {Approximate dimensions: 34 high x 35 wide x 16 inches deep.}. Condition: Loss to gilt shows white under layer. Top with noticeable wear.

Estimate:
\$500 / \$700



111
Oak Secretary and Desk with Stained Glass Doors.
 Circa 1910. Top cabinet section with stained glass doors, resting on a slant front desk with three long drawers. {Approximate dimensions: 77 high x 32 3/4 wide x 15 1/2 inches deep.}. Condition: Scratches to the top of the bottom piece from the top section. Overall wear is appropriate for the age. Key available.

Estimate:
\$300 / \$500



108
Chaise Lounge and Sofa Furniture Suite.
 20th century. Each with red and brown floral upholstery, highlighted with gold and red piping as well as faux-diamond tufted buttons, wood frames carved with various foliate and neoclassical motifs. {Approximate dimensions: Chaise lounge 48 high x 80 long x 37 inches deep, sofa 48 high x 85 wide x 35 inches deep.}. Condition: Minor wear to the feet.

Estimate:
\$1,000 / \$1,500



112
Impressive African Carved Wood Ceremonial Bed, Senufo.
 Senufo People, West Africa. Bed carved with various animals, figures, and patterns in relief, raised on four tapered legs, with a slanted raised portion for resting your head. {Approximate dimensions: 28 high x 37 wide x 115 inches long.}. Condition: Significant wear throughout, the piece is structurally sound.

Estimate:
\$4,000 / \$6,000



109
Upholstered Window Bench with Chrome Finish Legs.
 Tufted gold upholstery, cabriole legs. {Approximate dimensions: 15 high x 60 wide x 17 inches deep.}. Condition: Small stains to upholstery, dulling of chrome.

Estimate:
\$300 / \$500



113
Western Style Horn and Hide Stool Pair.
 Six horns make up the back, with black, white, and gray hide seats, supported by four horn legs. {Approximate dimensions: 34 high x 22 wide x 22 inches deep.}. Condition: Minor wear to the feet, very good overall.

Estimate:
\$300 / \$500



110
Rotating Bookcase of Birdcage Design on Georgian-Style Wood Stand.
 Wrought-iron birdcage with a patinated copper finish, resting on a wood base with four claw feet. {Approximate dimensions: 59 high x 25 wide x 25 inches deep.}. Condition: Minimal wear.

Estimate:
\$500 / \$800



114
Western Style Horn and Leather Armchair Pair.
 Horn back, arms, and legs, with brown leather upholstered backs and seats. {Approximate dimensions: 38 1/2 high x 21 1/2 wide x 22 inches deep.}. Condition: Cracking to the upholstery.

Estimate:
\$400 / \$600



Estimate:
\$400 / \$600

**115
Maison Jansen-Style Demilune Table.**

Beveled clear glass top set in a chrome frame with brass accents, with hoof feet.
{Approximate dimensions: 29 1/2 high x 45 wide x 17 inches deep.}.
Condition: Large chip to corner of glass top. Minimal wear to the frame.



Estimate:
\$400 / \$500

**116
Mid-Century Brass and Glass Coffee Table, Circa 1970's, Possibly Karl Springer.**

Circa 1970's.
Square form with rounded corners and outward curved edges on two sides. Inset glass top supported by wide legs.
{Approximate dimensions: 17 1/2 high x 48 wide x 48 inches deep.}.
Condition: Some patina and minor corrosion to the brass. Light scratches to the glass.



Estimate:
\$400 / \$600

**117
McGuire Glass Top Dining Table with Six Chairs.**

Table with bundled bamboo base, and beveled oval glass top. Chairs with bamboo frames, caned backs, and white vinyl seats. Two armchairs and four side chairs. McGuire badges to chair undersides.
{Approximate dimensions: Table 29 1/2 high x 75 long x 51 inches wide.}.
Condition: Some scuffs and wear to chairs, mainly around the lower legs. Some chairs with apparent repair to the framework around the caning, one chair with loose framework. Significant wear to the upholstered seats.



Estimate:
\$300 / \$400

**118
Frassino 'Petalò' Italian Modernist Low Table Retailed by Design Research.**

1960s.
Low ash wood table with curved edges set on four rounded black plastic legs. Original box with Design Research label included.
{Approximate dimensions: 9 1/2 high x 32 3/4 inches wide/deep.}.
Condition: Light fading to finish, small scuff to surface, light surface scratches. Box is worn.



Estimate:
\$300 / \$400

**119
Italian Set of Six Beige Leather Wrapped Side Chairs.**

Minimal modern design all wrapped in beige leather.
{Approximate dimensions: 35 1/2 high x 18 wide x 17 1/2 inches deep.}.
Condition: Significant wear to upholstery with cracking and tearing.



Estimate:
\$600 / \$800

**120
Modern Nordic Teak Two Piece Sideboard.**

Circa 1985
The top section with two sliding glass doors, resting on two 'T' legs on top of the lower cabinet section with two sliding cabinets flanking four drawers supported by 'T' legs. No apparent markings.
{Approximate dimensions: 61 high x 79 wide x 19 1/2 inches deep.}.
Condition: Credenza with brown streaks and minor wear to the finish on it's top. Very minor wear such as small scuffs and nicks. Cabinet with wear to the finish on it's top, some white paint marks to the back edge.



Estimate:
\$300 / \$500

**121
Contemporary Credenza.**

Canada.
Two single door cabinets flank three short drawers. Doors and drawers with no pulls. Minimalist design. Label to door interior reads, 'Made in Canada'.
{Approximate dimensions: 30 high x 60 wide x 18 inches deep.}.
Condition: A few minor scuffs. Apparent later shelf to one cabinet.



Estimate:
\$400 / \$600

**122
Contemporary Woodwork Continuous Slat Back Rocking Chair.**

Circa 1980.
Slat back continuous with the slat seat. The side rails, arms, and legs are one continuous curved form and are constructed of layered mixed wood.
'A927' impressed under the rear stretcher.
{Approximate dimensions: 39 high x 23 wide x 40 inches deep.}.
Condition: Black mark to one arm, excellent overall.



Estimate:
\$300 / \$500

123
Hjellegjerde Stressless Lounge Chair and Ottoman.
Norway.
Circa 2005.
Teak wood bases with brown leather upholstery. Chair can pivot and recline.
Label to bottom includes maker, 'Hjellegjerde Group'.
{Approximate dimensions: Chair 41 high x 32 wide x 33 inches deep, ottoman 17 1/2 high x 20 1/2 wide x 21 inches deep.}
Condition: Minimal wear, excellent overall.



Estimate:
\$300 / \$400

124
Italian Contemporary Slat Back Side Chairs, Set of Six.
Slat back with lattice towards the top, with black upholstered seats.
Generic labels to the underside, including 'Made in Italy', and 'Made by IMS SRL'. Numbers impressed under the rear seat rail.
{Approximate dimensions: 41 1/2 high x 18 wide x 19 inches deep.}
Condition: Minimal wear overall, excellent.



Estimate:
\$500 / \$800

125
Danish Contemporary Skovby #19 Dining Table in Lacquered Cherry.
Denmark.
Modern dining table with two automatically-released extension leaves flush to the underside of the tabletop.
Skovby to the bottom, along with instructions and schematics.
{Approximate dimensions: 29 1/2 high x 68 1/2 long x 39 inches deep.}
Condition: Minimal wear, several small water stains to the surface.



Estimate:
\$300 / \$400

126
Contemporary Turned and Milled Mixed Wood Trumpet-Form Vase on Pedestal.
Everted live edge rim with mixed wood applied pieces below, tapered body, small foot, dark gray base.
{Approximate dimensions including pedestal: 62 high x 21 inches diameter.}
Condition: A couple light stains to the finish, small marks to the base.



Estimate:
\$400 / \$600

130
The Searchers Half Sheet Movie Poster, Warner Brothers, 1956.
Directed by John Ford, the film stars John Wayne and Jeffrey Hunter.
{Approximate dimensions, 20 1/4 x 25 1/2 inches}.
[Condition: Folded, handling dents, minor fading, small blue mark on Vera Miles name, has been cropped].



Estimate:
\$500 / \$800

131
Revenge of the Creature Half Sheet Movie Poster Style B.
(Universal International, 1955)
Directed by Jack Arnold, the film stars John Agar and Lori Nelson and was also Clint Eastwood's uncredited film debut.
{Approximate dimensions, 20 1/4 x 26 inches}.
[Condition: Folded, handling dents, small staple hole at bottom right, some fold splits in the center, has been cropped].



Estimate:
\$300 / \$500

132
Song of the Islands (20th Century Fox, 1942).
Starring Betty Grable, Victor Mature, Jack Oakie, Thomas Mitchell, and George Barbier. Directed by Walter Lang.
{Approximate dimensions, 41 x 27 inches}.
[Condition: Folded, handling dents, some fold splits and staining].



Estimate:
\$400 / \$600

140
HENRI LEBASQUE
(French 1865-1937)
"Reclining Nude"
Pen and ink drawing.
Sheet: 7 1/4 x 7 1/2 inches; Mount: 15 5/8 x 12 1/2 inches.
Signed in pencil lower right: H. Lebasque.



Estimate:
\$4,000 / \$6,000

141
HENRI FANTIN-LATOURE
(French 1836-1904)
"Women carrying pots"
Oil on canvas.
20 1/8 x 14 1/4 inches; Frame: 24 5/8 x 18 1/2 inches.
Signed upper right corner: Fantin.
CONDITION: In overall good condition. The canvas has been laid down. No visible abrasions or areas of missing paint. Was not examined under black light.



Estimate:
\$300 / \$500

142
After REMBRANDT VAN RIJN
(Dutch 1606-1669)
"Portrait of Jan Asselyn, Painter, c. 1646"
Etching (later impression).
Sheet: 7 3/4 x 6 7/8 inches; 19 x 16 1/2 inches.
Unsigned.



Estimate:
\$1,000 / \$2,000

143
EUROPEAN SCHOOL
(Late 19th century)
"Two Heads"
Oil on panel.
10 1/4 x 6 1/2 inches; Frame: 17 5/8 x 13 3/4 inches.
Unsigned.
Two labels verso from Wortsman Rowe Galleries Inc San Francisco CA. On the first label it is noted: title: Two Heads / Artist: J. Ensor / No. 101-1 / Size: 10 1/4 x 6 1/2; on the second label it is noted: Ex Coll: Gustave Van Gelneve, Brussels Willem Movwen, Brussels / Anthony White, San Fran.
(Condition: Please contact fine arts department for a full condition report.)



Estimate:
\$400 / \$600



144
LOUIS VAN DER POL
(Dutch 1896-1982)
"Winter Sky" and "Feeding the Chickens"
Oil on panel.
12 x 16 inches; Frame: 15 3/4 x 19 7/8 inches. 11 1/2 x 6 7/8 inches; Frame: 18 5/8 x 14 inches.
Signed lower right: Louis v.d. Pol.
Signed lower right: L vd Pol.
Both pieces have labels verso from Artiques Gallery San Francisco CA. (Condition: Please contact fine arts department for a full condition report.)



Estimate:
\$300 / \$500

145
EUROPEAN SCHOOL
(20th century)
"Haybales"
Oil on masonite.
19 3/4 x 27 3/4 inches; Frame: 24 1/4 x 32 inches.
Unsigned.
(Condition: Please contact fine arts department for a full condition report.)



Estimate:
\$500 / \$700

146
ÉDOUARD CHIMOT
(French 1880-1959)
"Adelie", "Derespine", "Two Nudes with Drum" and "Portrait of Girl"
Color etching.
Largest: 11 3/8 x 7 3/8 inches.
Smallest two: 9 3/4 x 7 1/4 inches.
Signed in pencil lower right: Chimot; titled illegibly bottom center: "Adelie"; numbered lower left: 15/50. Signed in pencil lower right: Chimot; titled illegibly bottom center: "Derespine"; numbered lower left: 15/50. Signed in pencil lower right: Chimot; numbered lower left: 1er etat (first state). Signed in pencil lower right: Chimot; numbered lower left: etet def.



Estimate:
\$400 / \$600

147
JAROSLAV VERIS ZAMAZAL
(Czech 1900-1983)
"Stormy Srybnikem"
Oil on board.
15 3/4 x 22 1/2 inches; Frame: 21 3/4 x 28 1/2 inches.
Signed lower right: Veris
Label verso upper left corner: DILO with full cataloging.



Estimate:
\$2,000 / \$3,000

148
CHARLES WILLIAM BARTLETT
(British 1860-1940)
"Hawaiian Fisherman", "Prayers at Sunset", "Shoji, 1916" and "Entrance to Golden Temple Amritsar"
Color woodblock print.
Sheet: 10 1/2 x 15 1/2 inches; Frame: 18 5/8 x 22 5/8 inches.
Sheet: 11 1/2 x 16 1/8 inches; Frame: 18 1/4 x 22 1/2 inches.
Sheet: 11 1/8 x 15 3/4 inches; Frame: 18 1/2 x 22 5/8 inches.
Sheet: 11 1/4 x 16 inches; Frame: 18 5/8 x 22 3/4 inches.
Artist monogram and printed title in the lower right corner: CWB
Hawaiian Fisherman. Signed in pencil lower left in the margin: Charles W. Bartlett; titled printed with artist monogram lower left corner: Prayers at Sunset CWB. Signed in pencil lower left: Charles W. Bartlett; annotated along the bottom: "Above the clinging mists of Earth there lies a way, clear cut to God's own Heaven. Night turned to Day!". Signed in pencil lower left: Charles W. Bartlett; printed title with artist monogram lower right: Entrance to Golden Temple Amritsar CWB.
CONDITION: "Hawaiian Fisherman" in overall good condition, when examined out of the frame the sheet is completely laid down. Mat burn and discoloration to the margins around the whole image. The impression is strong and the colors bright, with no visible tears or areas of paper loss. Pin point areas of foxing, very minor. "Prayers at Sunset" when examined out of the frame the sheet is completely laid down. Areas of discoloration and mat burn along all four margins. Some areas of foxing in the margins, the colors are bright; with some discoloration to the buildings; would benefit from being re-framed. "Shoji 1916" the sheet is completely laid down to the margins. Mat burn and discoloration to the sheet around the



Estimate:
\$400 / \$600

149
Style of JULES JOSEPH LEFEBVRE
(French 1836-1911)
"Nude"
Oil on canvas.
53 1/4 x 32 1/4 inches; Frame: 58 1/2 x 37 1/2 inches.
Bears signature: Jules Lefebvre; annotated verso B. Wustenfeld



Estimate:
\$400 / \$600

150
JOHAN HEINRICH NEUMAN
(German 1819-1898)
"Portrait of a Woman"
Oil on canvas.
39 1/2 x 30 3/4 inches; Frame: 46 1/4 x 37 3/4 inches.
Annotated verso: "Portrat van Gerardina van Osch Echtgen Van Corn. Ant. Teulings / Geb. 29/1 1818 (born January 29, 1818) Overl 17/11 1867 (died November 17, 1867)."
CONDITION: In overall fair condition. There are 4 substantial patches verso throughout the canvas. The canvas has been relined, repairs visible from the front of the canvas. *Was not examined under black light.



Estimate:
\$800 / \$1,200

151
EUROPEAN SCHOOL
(19th century)
"Woman in the Library"
Oil on panel.
25 x 20 1/2 inches; Frame: 37 3/4 x 31 3/4 inches.
Signed lower right: H.J. Van Dyke.



Estimate:
\$400 / \$600

152
CONTINENTAL SCHOOL
(20th century)
"Courtyard"
Oil on paper.
26 1/2 x 20 1/2 inches; Frame: 32 7/8 x 26 5/8 inches.
Signed illegibly lower right.



Estimate:
\$500 / \$800

153
AMERICAN SCHOOL
(20th century)
"Portrait of two Children"
Oil on canvas laid on masonite.
50 x 40 1/2 inches; Frame: 61 1/2 x 51 inches.
Unsigned; annotation verso on backing paper "Gallaway Finn".
CONDITION: In overall good condition, visible areas of repair and restoration throughout. Cracking to the canvas visible under the varnish. *was not examined under black light. The frame is in overall good condition; areas of missing or cracked moldings throughout.



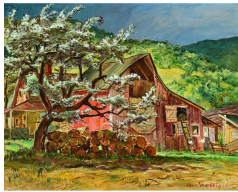
154
AMERICAN SCHOOL
(Late 19th / Early 20th century)
"Portrait of a Woman"
Oil on canvas.
33 x 27 1/4 inches; Frame: 49 x 42 inches.
Unsigned.

Estimate:
\$700 / \$900



155
DON BRACKETT
(American b. 1932)
"Grazing Goats"
Mixed media on board.
15 x 22 inches; Frame: 23 x 30 inches.
Signed lower left: Don Brackett; titled and signed verso along the top of the frame: Grazing Goats / Don Brackett.

Estimate:
\$500 / \$700



156
CECIL CROSLY BELL
(American 1906-1970)
"Silver Maple Barn at Blanchards"
Oil on masonite.
28 1/8 x 30 1/8 inches; Frame: 30 1/2 x 36 1/2 inches.
Signed lower right: Cecil C. Bell; titled verso upper right corner: Silver Maple Barn at Blanchards; estate stamped verso center: Estate of Cecil C. Bell retains all rights of publication.
PROVENANCE: Descent through the family of the artist to the present owner.
(Condition: Please contact fine arts department for a full condition report.)

Estimate:
\$400 / \$600



157
WILLIAM DEAN FAUSETT
(American 1913-1998)
"Stormy Landscape"
Watercolor.
Sheet: 23 1/2 x 29 1/2 inches; Mat: 26 x 36 1/8 inches.
Signed lower right: Dean Fausett.

Estimate:
\$300 / \$500



Estimate:
\$4,000 / \$6,000

158
GEORGE PHIPPEN
(American 1915-1966)
"A Tense Moment"
Oil on canvas.
16 x 20 inches; Frame: 23 3/4 x 27 5/8 inches.
Signed lower left: Geo Phippen with trademark notched calf ears under the signature.
Copy of the Gallery card which was attached to the back of the painting but recently has fallen off due to age.
Provenance: Purchased in Prescott, AZ at the Phippen Gallery and Museum in either late 1957 or early 1958 by H.G. and Virginia Mcilroy. It hung in their household until 2007 when it was inherited by their daughter who had it in her home until 2018 when she moved into a retirement home. Although has been moved several times since its creation the work has always been professionally crated and moved, has never hung in a home with nicotine or in direct sunlight.
(Condition: Please contact fine arts department for a full condition report.)
Notes: George Phippen was one of the founding members of the Cowboy Artists of America, the longest running artist group in America.



Estimate:
\$1,000 / \$2,000

159
After FREDERIC REMINGTON
(American 1861-1909)
"Cheyenne"
Bronze.
20 x 24 x 7 inches.
Bears signature on the base along the right side: Copyright by Frederic Remington; along the lip at the very bottom of the sculpture: Roman Bronze Works NY.



Estimate:
\$7,000 / \$9,000

160
MARY DENEALE MORGAN
(American 1868-1948)
"Late Afternoon, Monterey Coast"
Oil on canvas.
38 1/2 x 35 inches; Frame: 40 5/8 x 37 1/2 inches.
Signed lower right: M. DeNeale Morgan; titled and signed verso along the top stretcher bar: Late Afternoon, Monterey Coast / Mary DeNeale Morgan.
Provenance: Purchased from the Artist in the 1920's by Elizabeth McCrone, former president of the San Francisco Ceramic Guild, passed through the family by descent to the current owner.
CONDITION: In overall good condition there is a 2 1/2 inch surface tear lower right corner (not completely pushed through) heavy smoker household needs to be cleaned. Canvas is not relined. Pressure marks from the stretcher bars especially visible at the top and bottom. *was not examined under black light.



Estimate:
\$800 / \$1,200

163
GENE KLOSS
(American 1903-1996)
"Blessings on San Felipe Day"
Intaglio (etching).
Sheet: 20 3/4 x 16 1/4 inches;
Frame: 27 1/2 x 21 3/8 inches.
Signed in pencil lower right: Gene Kloss; numbered and titled lower left: Artist's Proof / Blessings on San Felipe Day.



Estimate:
\$300 / \$500

164
OSCAR BLUEMNER
(American / German 1867-1938)
"Soho Ap 24-20" (Old Club House Soho)
Pencil on toned paper.
Sheet: 5 1/2 x 7 5/8 inches; Frame: 14 x 17 inches.
Signed with artist monogram lower left corner; titled along the bottom margin: Soho Ap 24-20; titled verso: Old Club House Soho.
CONDITION: In overall good condition, when examined out of the frame the sheet is not laid down but was taped with archival tape along all four edges (only the top piece of tape is still completely attached. An area of foxing in the lower left corner 3/4 inch in from the monogram. No visible areas of missing paper or abrasions to the image.



Estimate:
\$2,000 / \$3,000

161
SOPHIE MARSTON BRANNAN
(American 1877-1960)
"Spirit on San Francisco"
Oil on canvas.
40 x 46 inches; Frame: 46 1/8 x 51 1/8 inches.
Signed lower left: S. M. Brannan



Estimate:
\$6,000 / \$8,000

162
MISCHA ASKENAZY
(American / Russian 1888-1961)
"Courtyard Scene"
Oil on canvas.
36 x 28 1/4 inches; Frame: 42 1/2 x 34 1/2 inches.
Signed lower left: M. Askenazy.
CONDITION: In overall good condition; visible water damage verso, at the top of the canvas and in the bottom half. Patch verso upper left corner. *was not examined under black light.



Estimate:
\$400 / \$600

165
NELS HAGERUP
(American 1864-1922)
"Sunset Coastal Scene"
Oil on canvas.
16 x 24 1/4 inches.
Signed lower left: N. Hagerup.
CONDITION: In overall good condition; small patch of missing paint right side in the grass, pressure dent in upper sky and from stretcher bars. Yellowing of the varnish would benefit from being cleaned. *Was not examined under black light.



Estimate:
\$4,000 / \$7,000

166
JOSEPH KLEITSCH
(American/ Hungarian 1882-1931)
"Shepherdess with Sheep in a Field"
Oil on canvas.
20 1/8 x 13 7/8 inches; Frame: 25 1/2 x 19 3/8 inches.
Signed lower right: J. Kleitsch
Provenance: This Joseph Kleitsch painting has been in the owners family for over a century. It was acquired by the owners great uncle Louis in the early 1900s in Denver, Colorado (Kleitsch lived in Denver during this period and married his first wife, Emma, before moving to California.) The painting has since passed down the family line and hung in his grandparents and then parents home. It was passed to the current through descent, due to the care that was taken when moving it, the painting remains in good condition.
CONDITION: In overall good condition, the canvas is not relined, no visible repairs or areas of restoration. No abrasions or areas of paint loss.



Estimate:
\$1,000 / \$2,000

167
JULES EUGÈNE PAGES
(American 1867-1946)
"Outdoor Landscape"
Oil on board.
9 1/8 x 12 inches; Frame: 12 5/8 x 15 5/8 inches.
Signed lower right: Jules Pages.
(Condition: Please contact fine arts department for a full condition report.)



Estimate:
\$800 / \$1,200

168
JOHN MELVILLE KELLY
(American 1879-1962)
"Chinese Costume Hawaii"
Aquatint etching.
Sight: 16 x 13 1/2 inches; Frame: 25 3/8 x 19 1/2 inches.
Signed in pencil lower right: John M. Kelly; titled lower left: 'Chinese Costume Hawaii'.



Estimate:
\$600 / \$800

169
WILLIAM KEITH
(American 1838-1911)
"Pastoral Scene"
Oil on canvas.
18 1/4 x 29 1/8 inches; Frame: 23 x 34 inches.
Signed lower right: W. Keith.
CONDITION: In overall good condition, the canvas is heavily wax relined. Heavy varnish throughout with visible cracking underneath. Discoloration in the clouds, would benefit from being cleaned. *was not examined under black light.



Estimate:
\$2,000 / \$4,000

170
After TAMARA DE LEMPICKA
(Polish 1898-1980)
"Autoportrait", "The Model" and "Printemps"
Serigraph. Serigraph. Giclee print (reproduction).
Sight: 34 x 25 3/4 inches; Frame: 45 1/2 x 37 3/8 inches. Sheet: 46 3/8 x 32 inches. Sight: 18 1/4 x 14 3/8 inches; Frame: 27 1/2 x 23 1/2 inches.
Estate stamped lower right: Tamara De Lempicka © SPADEM 1991; with coat of arms stamp bottom center "Honor dux Sequor"; numbered lower left in pen: 17/400. Estate stamped lower right; numbered in gold pen lower right: 171/195. Bears estate stamp lower right in image.



Estimate:
\$2,000 / \$3,000

171
LEON ZEYTLINE
(French 1885 - 1962)
"L'heure du bain" (bath time)
Oil on canvas
28 3/4 x 39 1/4 inches; Frame: 37 5/8 x 30 3/8 inches.
Signed lower left: Leon Zeytline
Provenance: Catalog raisonne Volume 1, page 365 #412



Estimate:
\$800 / \$1,200

172
HUNGARIAN SCHOOL.
(Early to mid 20th Century)
"Woman in Evening Gown with Mirror"
Oil on canvas.
30 x 23 inches.
Illegibly signed lower right.
CONDITION: A horizontal repair approx 6 inches from the bottom.



Estimate:
\$600 / \$800

173
After PABLO PICASSO
(Spanish 1881-1973)
"Femme au Corsage a Fleurs"
Offset lithograph.
Sheet: 17 7/8 x 13 7/8 inches;
Frame: 25 3/4 x 21 5/8 inches.
Dated in image upper right corner.
CONDITION: In overall good condition, when examined out of the frame the is not laid down but is hinged at the top with archival tape. Slight wave to the sheet, no watermark visible in the paper.



Estimate:
\$400 / \$600

176
Style of PAUL KLEE
(German 1879-1940)
"Untitled"
Watercolor.
Sheet: 5 3/8 x 3 1/4 inches; Frame: 13 1/2 x 11 3/8 inches.
Bears signature upper right corner: Klee; numbering lower left: 1922/272.
Property From a San Francisco Apartment designed by Steven Volpe.



Estimate:
\$400 / \$600

174
Attributed to JEAN COCTEAU
(French 1889-1963)
"Line portrait of a Woman"
Colored pen/marker on toned paper.
Sheet: 25 1/4 x 19 5/8 inches;
Frame: 29 1/8 x 23 1/8 inches.
Bears signature lower right: Jean Cocteau.
CONDITION: In overall good condition, the sheet is not laid down nor is it hinged in anyway. When you look at the sheet from the back you see bleed through from the marker. There are no visible tears to the sheet or abrasions to the image.



Estimate:
\$700 / \$900

177
Style of PAUL KLEE
(German 1879-1940)
"Untitled"
Mixed media.
Sight: 11 7/8 x 11 inches; Frame: 20 x 19 inches.
Bears signature lower right: Klee.
Property From a San Francisco Apartment designed by Steven Volpe.



Estimate:
\$400 / \$600

175
SALVADOR DALI
(Spanish 1904-1989)
"Figure rouge avec portrait de Quevedo" (from Visions de Quevedo)
Engraving with Pochoir on Richard de Bas paper (watermarked lower right corner).
Image: 20 1/2 x 14 1/4 inches;
Sheet: 26 3/8 x 20 inches.
Signed in pencil lower right: Dali and numbered lower left: LXXIV/C.
Literature: Found in "The Official Catalog of the Graphic Works of Salvador Dali" by Albert Field on page 103 figure 75-5C.



Estimate:
\$300 / \$500

178
Style of RENE MAGRITTE
(Belgian 1898-1967)
"Untitled"
Mixed media.
Sight: 16 x 11 5/8 inches; Frame: 27 1/4 x 22 5/8 inches.
Bears signature lower right: Magritte.
Property From a San Francisco Apartment designed by Steven Volpe.



Estimate:
\$1,000 / \$2,000

179
MICHEL HENRY
(French 1928-2016)
"Bouquet de May"
Oil on canvas.
44 x 28 3/4 inches.
Signed lower left: Michel Henry; titled verso along the top stretcher bar.



180
BERNARD BUFFET
 (French 1928-1999)
 "Le Pont des Arts" (from Album Paris)
 Color lithograph on Rives paper.
 Sheet: 21 5/8 x 28 3/8 inches;
 Frame: 26 1/4 x 32 3/4 inches.
 Signed in pencil lower left: Bernard Buffet; numbered lower right: 36/150. Annotation in pencil verso lower left: de Pont des arts or Le point des Tours or L'île St. Louis.
CONDITION: In overall good condition, when examined out of the frame the sheet is not laid down, does have old (non archival) tape residue verso in all four corners. The acid from the tape is starting to come through to the front of the sheet but it is very faint. Slight discoloration around the very edges of the sheet. The colors of the print are bright and the impression is strong.

Estimate:
\$800 / \$1,200



181
PAUL COLIN
 (French 1892-1985)
 Two plates (one sheet) from "Le tumulte noir- Profil de Joséphine Baker"
 Mixed media lithograph with pochoir, doubled sided image in one frame.
 Sight: 15 1/2 x 11 1/2 inches; Frame: 22 5/8 x 18 3/8 inches.
 Both sides are signed: Paul Colin.
CONDITION: In overall good condition, due to the framing it was not examined out of the frame. There are not visible areas of missing paper or abrasions to the images. The colors are bright and the impressions are good.

Estimate:
\$1,500 / \$2,500



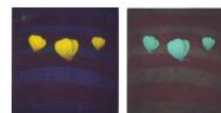
182
PAUL JACOULET
 (French 1902-1960)
 "Pêcheur de Sawara" and "Chagrin D'Amour"
 Color woodblock print.
 Sheet: 18 1/2 x 14 1/8 inches. Sheet: 5 7/8 x 4 inches.
 Signed in pencil lower right: Paul Jacoulet with seal. Signed in pen lower right with seal: Paul Jacoulet.

Estimate:
\$400 / \$600



Estimate:
\$1,200 / \$1,500

183
PAUL JACOULET
 (French 1902-1960)
 "La lettre du Fils Seoul, Corée", "Retour de la Jungle Tondano: Celebes", "Amoureux a Tarang Yap Ouest Carolines", "Trois Coreens, Seoul Coree" and "Vendeur de Masques (Chinois)."
 Color woodblock.
 Sheet: 14 5/8 x 19 inches. Sheet: 18 3/8 x 14 inches. Sheet: 19 x 14 3/4 inches. Sheet: 14 x 18 1/2 inches. Sheet: 18 1/4 x 14 1/4 inches.
 Signed in pencil lower right: Paul Jacoulet with artist stamp; printed title in margin lower right: La Lettre du Fils Seoul, Coree; with printer's cartouche in the left lower margin. Pencil signed lower right: Paul Jacoulet with artist stamp; printed title in margin lower right: Retour de la Jungle: Tondano: Celebee; watermark visible in the left margin written in Japanese characters; printer's cartouche in the right lower margin. Signed in pencil lower left: Paul Jacoulet with artists stamp; printed title in margin lower right: Amoureux a Tarang Yap, Ouest Carolines; watermark visible in left margin written in Japanese characters; printers cartouche in left margin. Signed in pencil with Mandarín duck seal lower right; printer cartouche in margin lower left. Signed in pencil with butterfly seal lower left: Paul Jacoulet; printed title in the margin lower right: Vendeur de Masques (Chinois); with printer's cartouche in right margin. Provenance: The current owner's mother was acquainted with Paul Jacoulet in the late 40's and these works were given to her by the artist. They were passed to the current owner through descent.



Estimate:
\$800 / \$1,200

184
YOZO HAMAGUCHI
 (Japanese 1909-2000)
 "Three Yellow Butterflies" and "Three Teal Butterflies"
 Mezzotint.
 Sheet: 14 3/4 x 12 3/4 inches. Sheet: 15 x 13 1/8 inches.
 Signed in pencil lower right: Hamaguchi. Signed in pencil lower right: Hamaguchi.



185
MANABU ONOGI
 (Japanese 1924-1967)
 "Landscape- T.L.B."
 Screenprint with embossing.
 Sight: 19 3/4 x 15 inches; Frame: 28 3/8 x 23 inches.
 Signed in pencil lower right: G. Onogi; numbered lower left: 17/20 and titled bottom center: Landscape-T.L.B.

Estimate:
\$400 / \$600



Estimate:
\$600 / \$800

188
HIROYUKI TAJIMA
 (Japanese 1911-1984)
 "Saula", "Memories", "Red Evidence" and "Green on Green"
 Color woodblock.
 Sight: 14 x 10 5/8 inches; Frame: 22 1/8 x 18 3/8 inches. Sight: 14 x 10 5/8 inches; Frame: 22 1/8 x 18 3/8 inches. Sight: 14 x 10 5/8 inches; Frame: 22 1/8 x 18 3/8 inches. Sight: 14 x 10 5/8 inches; Frame: 22 1/8 x 18 3/8 inches.
 Signed and dated lower right: Hiroyuki Tajima '78, titled lower left: Saula and numbered bottom center: 50-4. Signed in pencil and dated lower right: Hiroyuki Tajima '77; titled in English and annotated in Japanese lower left; numbered bottom center: 50-44. Signed in pencil and dated lower right: Hiroyuki Tajima '77; titled: Red Evidence and annotated in Japanese lower right; numbered bottom center: 50-34. Signed in pencil and dated lower right: Hiroyuki Tajima '82; titled Green on Green and annotated in Japanese lower left; numbered bottom center: 100-8.



186
JOICHI HOSHI
 (Japanese 1913-1979)
 "Red Treetop on Gold Ground"
 Woodblock with metallic powder.
 Sight: 10 1/4 x 10 1/4 inches; Frame: 17 5/8 x 17 inches.
 Signed and dated lower right: Joichi Hoshi '73; annotated in Japanese lower left.

Estimate:
\$500 / \$700



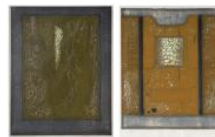
187
JOICHI HOSHI
 (Japanese 1913-1979)
 "White Tree"
 Woodblock print with metallic powders.
 Sight: 22 1/2 x 22 inches; Frame: 31 5/8 x 31 inches.
 Signed and dated lower right: Joichi Hoshi '74; annotated in Japanese and numbered 74/99 lower left. Was not examined out of the frame.

Estimate:
\$700 / \$900



Estimate:
\$300 / \$500

189
HIDEO HAGIWARA
 (Japanese b. 1913)
 "Fantasy in Red"
 Woodcut print.
 Sight: 34 x 23 3/4 inches; Frame: 45 x 33 1/2 inches.
 Signed and dated lower left: Hideo Hagiwara- 62; titled in Japanese and English bottom center: Fantasy in Red (1); numbered lower right: 20/50.



Estimate:
\$500 / \$700

190
HIROYUKI TAJIMA
 (Japanese 1911-1984)
 "Yellow Remembrance" and "Works- Yellow"
 Color woodblock.
 Sight: 23 3/4 x 18 1/2 inches; Frame: 31 1/2 x 25 7/8 inches. Sight: 23 3/4 x 18 1/2 inches; Frame: 31 3/8 x 25 3/4 inches.
 Signed in pencil and dated lower right: Hiroyuki Tajima '77; titled in English and annotated in Japanese lower left; numbered bottom center: 50-31. Signed in pencil and dated lower right: Hiroyuki Tajima '76; titled in English and annotated in Japanese lower left; numbered bottom center: 50-42.



191
SHU-PARK CHAN
 (Chinese 20th century)
 "Two Birds"
 Watercolor.
 Sheet: 12 x 16 3/8 inches; Frame: 26 1/8 x 32 1/4 inches.
 Signed with chop mark lower left and along the right edge.

Estimate:
\$300 / \$500



192
JIM DINE
 (American b. 1935)
 "Eight Hearts"
 Screenprint in colors.
 Sight: 24 x 29 inches; Frame: 31 3/4 x 36 5/8 inches.
 Signed and dated bottom center: Jim Dine 1970.
 *Was not examined out of the frame.

Estimate:
\$800 / \$1,200



193
IRVING SINCLAIR
 (American 1895-1969)
 "Floral Still Life"
 Oil on canvasboard.
 Sight: 19 1/4 x 14 3/4 inches; Frame: 26 x 20 3/4 inches.
 Signed and dated lower right: Irving Sinclair 41'.

Estimate:
\$400 / \$600



194
WILLIAM SCHARF
 (American 1927-2018)
 "Abstract on Purple Ground" and
 "Abstract on Black Ground"
 Silkscreen.
 Sheet: 23 x 28 5/8 inches. Sheet: 23 x 28 1/4 inches.
 Signed in pencil lower right: Wm. Scharf; numbered lower left: 97/100.
 Signed in pencil lower right: Wm. Scharf; numbered lower left: 38/100.

Estimate:
\$600 / \$800



Estimate:
\$800 / \$1,200

195
ANDY WARHOL
 (American 1928-1987)
 "Andy Warhol's Index Book"
 Mixed media: offset lithograph with pop ups and inserts.
 Overall: 10 7/8 x 8 1/2 inches.
 Unsigned / unnumbered edition.
 Publisher information on the front page: First Printing All rights reserved Published in New York by Random House, Inc and simultaneously in Toronto Canada, by Random House of Canada Limited. Produced in cooperation with Random House Inc by Graphics Internation Inc. Library of Congress Catalog card number: 67-22621
 Manufactured in Japan.
 CONDITION: In overall good condition, missing the included plastic record, the pop-ups are in good condition but some of the inserts are no longer attached. The last two pages are fused together in the center of the pages. Soiling and wear to the front cover; with visible wear to the pages.



Estimate:
\$400 / \$600

196
GREGORY AMENOFF
 (American b. 1948)
 "V. XII"
 Mixed media on paper (ink and watercolor).
 Sheet: 30 x 23 inches; Frame: 35 x 27 1/2 inches.
 Signed, dated and titled lower left: Amenoff 91 V. XII.
 Victoria Munroe Gallery New York, NY label verso.
 (Condition: Please contact fine arts department for a full condition report.)



Estimate:
\$500 / \$700

197
LAWRENCE WHITTINGTON
 (20th century)
 "Untitled Abstract, 1996"
 Oil on canvas.
 90 x 74 inches.
 Signed and dated verso bottom right: L. Whittington '96.
 Provenance: From the artist.
 (Condition: Please contact fine arts department for a full condition report.)



Estimate:
\$300 / \$500

198
GERO HEINE
(German / American 20th century)
"Male Tiger Scratch Marking Tree"
Photograph.
30 x 20 inches; Frame: 42 x 30 1/4 inches.
Signed l/r and numbered l/l: 4/125.
Purchased from the Gero Heine Photography gallery in Santa Cruz, CA. Certificate of Authenticity attached verso.
(Condition: Please contact fine arts department for a full condition report.)



Estimate:
\$1,000 / \$2,000

199
MICHAEL KENNA
(American / British b. 1953)
"Railroad Crossing" and "Underbarn, Weymouth, Dorset England"
Silver gelatin print.
Both measure: Image: 7 3/8 x 7 3/8 inches; Frame: 20 3/4 x 16 3/4 inches.
Signed and dated lower right: Michael Kenna 1990; numbered lower left: 4/45. Signed and dated lower right: Michael Kenna 1990; numbered lower left: 27/45.
Provenance: Stephen Wirtz Gallery San Francisco CA.
(Condition: Please contact fine arts department for a full condition report.)



Estimate:
\$300 / \$500

200
JACK LAYCOX
(American 1921-1984)
"Lantern at Nara"
Oil on canvas laid on board.
18 x 24 inches.
Signed lower right: Jack Laycox; titled, signed and dated verso upper left corner: "Lantern at Nara" Jack Laycox- 1968.
Provenance: From the estate of the artist.
(Condition: Please contact fine arts department for a full condition report.)



Estimate:
\$300 / \$500

201
PETER MAX
(American b. 1937)
"Standing Figure against Striped wall"
Lithograph.
Sight: 21 1/4 x 15 1/2 inches; Frame: 29 x 20 1/2 inches.
Signed lower right: Max and numbered lower left: 209/250.



Estimate:
\$2,000 / \$4,000

202
DAVID BIERK
(American / Canadian 1944-2002)
"Flowers in Stone to Fantin-Latour and Manet" 2001
Oil on canvas encased in concrete.
Overall: 31 x 27 1/2 inches.
Initialed lower right of the canvas: DB; signed verso on artist label: David Bierk.
Nancy Hoffman Gallery, New York NY label verso.



Estimate:
\$800 / \$1,200

203
LEROY NEIMAN
(American 1921-2012)
"La Plage a Deauville"
Serigraph.
Sight: 30 3/4 x 37 inches; Frame: 38 3/8 x 44 1/2 inches.
Signed in pencil lower right: Leroy Neiman; numbered lower left: 191/375.



Estimate:
\$600 / \$900

204
BENIAMINO BUFANO
(American / Italian 1898-1970)
"Hand of Peace"
Monumental pencil drawing.
61 3/16 x 105 1/4 inches.
Unsigned.



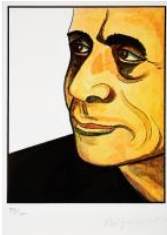
Estimate:
\$1,200 / \$1,800

205
MAN RAY
(American 1890-1976)
"Rebus, 1972"
Color soft ground etching on Japan paper.
Plate: 19 1/2 x 15 3/4 inches; Sheet: 26 1/4 x 19 3/4 inches; Frame: 28 1/4 x 23 1/2 inches.
Signed in pencil lower right: Man Ray; numbered lower left: XI/XXV.
Provenance: Obtained in the late 1970's in Paris, France from an art dealer; has been in the current owners possession since.
CONDITION: In overall good condition, when examined out of the frame the sheet is not laid down. There is no visible discoloration from the mat or from age. There are no visible abrasions or tears to the sheet.



Estimate:
\$1,000 / \$1,500

208
BERNARD FUCHS
(American 1932-2009)
"The Tournament"
Mixed media on board.
Sight: 19 5/8 x 14 3/4 inches; Frame: 25 3/8 x 20 1/4 inches.
Signed lower right: B. Fuchs; annotated on the back of the back of the board: "Used June 15, 1964 p.33"
Provenance: This work was featured in the June 14, 1964 issue of Sports Illustrated as part of the US Open preview article entitled "A Horror to Play in but Great to Watch".
CONDITION: In overall good condition, when examined out of the frame the board is not laid down but is hinged at the top. The piece is watercolor with gouache there are no visible areas of abrasions or restoration. The colors are bright and clean. The frame is in fair condition, the screw holes have been oxidized and the glass of the frame has a crack in the upper corner. The piece would benefit from being from re-framed.



Estimate:
\$300 / \$500

206
BENIAMINO BUFANO
(American / Italian 1898-1970)
"Self Portrait"
Lithograph.
Sight: 11 5/8 x 8 1/2 inches; Frame: 25 1/2 x 18 7/8 inches.
Signed in pencil lower right: Bufano and numbered lower left: 79/100.
Artiques Gallery San Francisco CA label verso.
(Condition: Please contact fine arts department for a full condition report.)



Estimate:
\$1,500 / \$2,000

209
LEONARDO NIERMAN
(Mexican / American b. 1932)
"Abstract"
Oil on board.
48 x 35 inches; Frame: 52 x 39 1/2 inches.
Signed lower left: Nierman.



Estimate:
\$300 / \$500

207
BENIAMINO BUFANO
(American / Italian 1898-1970)
"Balinese Mother and Child" and "The Children in pink"
Lithograph.
Sight: 16 x 10 1/2 inches; Frame: 25 1/2 x 19 inches. Sight: 10 1/2 x 8 1/2 inches; Frame: 25 5/8 x 23 1/4 inches.
Pencil signed lower right: Bufano and numbered lower left: 82/100.
Pencil signed lower right: Bufano and numbered lower left: First Impression.
"Balinese Mother and Child": Label from Artiques Gallery San Francisco CA verso upper left corner.
(Condition: Please contact fine arts department for a full condition report.)



Estimate:
\$2,500 / \$3,000

210
LEROY NEIMAN
(American 1921-2012)
"Elephant Nocturn"
Color screenprint.
Sight: 31 x 39 1/4 inches; Frame: 47 1/2 x 55 inches.
Signed in pencil lower right: Leroy Neiman; numbered lower left: 60/500.



Estimate:
\$500 / \$700

211
NATHAN OLIVEIRA
(American 1928-2010)
"Untitled Figure"
Mixed media on paper.
Sheet: 7 x 5 1/2 inches; Frame: 16 x 14 inches.
Signed and dated verso: Oliveira 81'.
Provenance: From the estate of a Davis, CA poet (annotated verso on the backing paper).
CONDITION: In overall good condition, the sheet is not laid down but is taped with archival tape on all four sides (only top piece is still attached to the mat). The image is clean with no mat burn or discoloration. There are no abrasions to the sheet or image and no areas of paper loss.



Estimate:
\$700 / \$900

220
C.H. Meylan Black Enamel, 18k Yellow Gold Pendant Watch with Chain.
DIAL: Round, white, black Arabic numeral hour markers, black outer minutes track, red outer five interval Arabic numerals, sunken subsidiary seconds dial at 6 o'clock, black spade hands, C.H. Meylan, Brassus.
MOVEMENT: Manual wind, jeweled, adjusted, 17269, C.H. Meylan, Brassus.
CASE: Round, 18k yellow gold, hunting case, black enamel with an engine turn pattern and floral border motif, 94999, 18k yellow gold cuvette with engraving "Mary E. Stephens", 36 mm, suspended from an 18k yellow gold 26 inch chain. Accompanied by a fitted Black Starr & Frost box.
{Gross Weight: 40.6 dwts}



Estimate:
\$1,000 / \$1,500

221
French Hercey 18k Yellow Gold Watch Head with Detached Bracelet.
DIAL: Round, silver, gold dot and arrow hour markers, gold dot outer minutes track, gold dauphine hands, gold center sweep seconds hand, Hercey, 17 Rubis, Es. Suisse.
MOVEMENT: Manual wind, seventeen (17) rubis.
CASE: Round, 18k yellow gold, snapback, four stylized lugs, 4131, 32 mm.
Accompanied by an 18k yellow gold woven mesh link bracelet measuring approximately 17 mm in width and measuring approximately 6 1/4 inches in length.
{Gross Weight: 46.4 dwts}
Note: Watch head has French eagle head hallmark, bracelet has owl hallmark. Bracelet not attached, needs to be soldered.



Estimate:
\$1,500 / \$2,500

222
Ladies Retro Diamond, Ruby, 14k Rose Gold Covered Wristwatch.
DIAL: Rectangle, cream, applied diamond and ruby hour markers, black baton hands.
MOVEMENT: Manual wind, seventeen (17) jewels, unadjusted, Fils de R. Picard & Co.
CASE: 14k rose gold, hinged cover, snapback, top and bottom stylized retro lugs, featuring round-cut and baguette-cut rubies, accented by single-cut diamonds weighing a total of approximately 0.75 cttw., 58 x 20 mm.
BRACELET: 14k rose gold, diamond shaped brick link measuring approximately 12 mm in width, fold over clasp, 7 inches. Accompanied by a black box.
{Gross Weight: 41.6 dwts}



Estimate:
\$1,000 / \$1,500

223
French Zessler Diamond, Platinum-Topped, 18k Yellow Gold Wristwatch.
DIAL: Square, gold, black index hour markers, black baton hands, Zessler. MOVEMENT: Manual wind, sixteen (16) jewels, Swiss made. CASE: Square, platinum-topped 18k yellow gold, snapback, accented by ten full-cut diamonds weighing a total of approximately 0.30 cttw., 14 mm. BRACELET: 18k yellow gold, lattice motif link measuring approximately 15 mm in width, fold over clasp, 6 1/2 inches. {Gross Weight: 25.0 dwts} Note: Crystal scratched, safety chain missing. French eagle head and dog head hallmarks.



Estimate:
\$1,000 / \$1,500

226
Ladies Rolex Oyster Perpetual Datejust Stainless Steel, 18k Yellow Gold Wristwatch - Ref. No. 69173.
DIAL: Round, gold, gold index hour markers, black outer minutes track, aperture at 3 o'clock for date, gold baton hands, gold center sweep seconds hand, Rolex Oyster Perpetual Datejust, Superlative Chronometer Officially Certified, Swiss made. MOVEMENT: Automatic, not opened. CASE: Barrel, two-tone stainless steel and 18k yellow gold, fluted 18k yellow gold bezel, four lugs, ref. no. 69173, 33 x 26 mm. BRACELET: 18k yellow gold and stainless steel jubilee link tapering from 12 to 10 mm, deployant clasp, 7 inches. {Gross Weight: 34.6 dwts}



Estimate:
\$500 / \$700

224
Ladies Philip Gerardot 14k Yellow Gold Wristwatch.
DIAL: Square, white, black Roman numeral hour markers, black and gold baton hands, Philip Gerardot. MOVEMENT: Quartz battery. CASE: Square, 14k yellow gold, snapback, 376 VI, eight screw motif bezel, 16 mm. BRACELET: 14k yellow gold, oyster style link measuring approximately 10 mm in width, fold over clasp, 7 inches. {Gross Weight: 22.0 dwts}



Estimate:
\$500 / \$700

227
French Art Deco Diamond, Platinum, 14k White Gold Wristwatch.
DIAL: Geometric, cream, black Arabic numeral and index hour markers, blued arrow hands. MOVEMENT: Manual wind, jeweled. CASE: Geometric, platinum, snapback, thirty-two single-cut diamonds weighing a total of approximately 0.25 cttw., 30 x 10 mm. BRACELET: Platinum and 14k white gold fancy square links measuring approximately 6 mm in width, twenty-eight single-cut diamonds weighing a total of approximately 0.55 cttw., fold over clasp with safety chain, 6 inches. {Gross Weight: 15.0 dwts} Note: French platinum dog head hallmark on inside case. Discoloration to dial.



Estimate:
\$3,000 / \$5,000

225
Cartier 18k Yellow Gold Covered Wristwatch.
DIAL: Square, cream, black Arabic numeral hour markers, blued hands, Cartier, France. MOVEMENT: Manual wind, jeweled, not opened. CASE: Geometric, 18k yellow gold, snapback, 67003, 953, Made in France, slide cover, 22 x 12 mm. BRACELET: 18k yellow gold hinged bangle measuring approximately 12 mm in width, pressure clasp with side safety, internal diameter of approximately 58 mm. {Gross Weight: 39.4 dwts} Note: Discoloration and damage to dial.



Estimate:
\$300 / \$500

228
Diamond, Sapphire, 18k White Gold Band.
Featuring six full-cut diamonds weighing a total of approximately 0.30 cttw., accented by seven round-cut sapphires weighing a total of approximately 0.40 cttw., set in an 18k white gold mounting. {Size: 6 3/4, Gross Weight: 2.5 dwts}



Estimate:
\$700 / \$900

**229
Diamond, Colorless Stone, 14k
White Gold Ring.**

Featuring one round brilliant-cut diamond weighing approximately 0.82 ct., accented by twelve princess-cut diamonds weighing a total of approximately 1.00 cttw., further enhanced by thirty full-cut colorless stones, set in a 14k white gold mounting.
{Size: 6 1/2, Gross Weight: 3.4 dwts}



Estimate:
\$2,000 / \$3,000

**233
Art Deco Diamond, Sapphire,
18k White Gold Bracelet.**

Centering one full-cut diamond weighing approximately 0.55 ct., accented by calibre-cut sapphires, further enhanced by ninety-one full-cut and single-cut diamonds weighing a total of approximately 2.75 cttw., set in an 18k white gold articulated mounting, completed by a tongue and groove clasp with fold under safety and safety chain, forming a 6 3/4 inch bracelet.
{Gross Weight: 12.0 dwts}
Note: Some links bent/dented.



Estimate:
\$1,800 / \$2,500

**230
Natural Color Change
Sapphire, Diamond, 14k White
Gold Ring.**

Featuring one oval-cut color change sapphire weighing approximately 1.70 ct., accented by full-cut diamonds weighing a total of approximately 0.85 cttw., set in a 14k white gold mounting.
Accompanied by a GIA Gemological Report No. 2201492376 dated August 8, 2019 stating "Natural Corundum, Natural Sapphire. No Indications of Heating. Color: Dark Blue changing to Dark Purple."
{Size: 7, Gross Weight: 3.1 dwts}



Estimate:
\$600 / \$800

**234
Diamond, 14k White Gold
Ring.**

Centering one round brilliant-cut diamond weighing approximately 0.80 ct., accented by two round brilliant-cut and four baguette-cut diamonds weighing a total of approximately 0.85 cttw., set in a 14k white gold mounting.
{Size: 6 1/2, Gross Weight: 4.6 dwts}



Estimate:
\$700 / \$900

**231
Diamond, 14k Gold Flame
Pendant Brooch.**

Designed as a flame, featuring one hundred and five old European-cut diamonds weighing a total of approximately 4.75 cttw., set in a 14k white and rose gold mounting measuring approximately 48 x 33 mm.
{Gross Weight: 9.2 dwts}



Estimate:
\$300 / \$500

**235
Cultured Pearl, Diamond, 14k
White Gold Necklace.**

Composed of thirty-six cultured pearls ranging in size from approximately 10 mm to 9 mm, completed by a diamond, 14k white gold clasp, forming a 15 1/2 inch necklace.
{Gross Weight: 29.3 dwts}



Estimate:
\$400 / \$600

**232
Sapphire, Diamond, 14k White
Gold Ring.**

Featuring one emerald-cut sapphire weighing approximately 3.60 cts., accented by full-cut diamonds weighing a total of approximately 0.40 cttw., set in a 14k white gold mounting.
{Size: 6 1/2, Gross Weight: 4.5 dwts}
Note: Evidence of lattice diffusion.



Estimate:
\$1,500 / \$2,000

**236
Sapphire, Diamond, 14k White
Gold Ring.**

Featuring one square cushion-cut sapphire weighing approximately 2.30 cts., accented by twenty princess-cut and sixteen full-cut diamonds weighing a total of approximately 1.50 cttw., set in a 14k white gold mounting.
{Size: 7, Gross Weight: 6.9 dwts}



Estimate:
\$700 / \$900

237
Cultured Pearl, Multi-Stone, 14k White Gold Charm Bracelet.
Featuring a cultured pearl, 14k white gold heart charm; a diamond, 14k white gold calendar date charm "March 2, 1955 To Joan Love Mother & Dad M"; sapphire, cultured pearl, 14k white gold bell charm; a half pearl, 14k yellow gold charm and a sapphire, ruby, cultured pearl, 14k white gold champagne in an ice bucket charm, all suspended from a cultured pearl, 14k white gold bracelet measuring approximately 7 inches in length.
{Gross Weight: 24.0 dwts}



Estimate:
\$400 / \$600

241
Diamond, Blackened Sterling Silver Bracelet.
Featuring numerous tapered baguette-cut diamonds weighing a total of approximately 1.70 cttw., set in a blackened sterling silver hinged bangle bracelet mounting with matte finish and measuring approximately 6.5 mm in width with an internal diameter of approximately 54 mm.
{Gross Weight: 10.5 dwts}



Estimate:
\$1,500 / \$2,500

238
Sapphire, Diamond, 14k White Gold Ring.
Featuring one oval-cut sapphire weighing approximately 4.40 cts., accented by fourteen baguette-cut and twenty full-cut diamonds weighing a total of approximately 0.90 cttw., set in a 14k white gold mounting.
{Size: 7, Gross Weight: 6.7 dwts}



Estimate:
\$400 / \$600

242
Amethyst, Silver Jewelry Suite.
Including a hexagonal fancy-cut amethyst, silver 17 inch necklace together with a matching pair of hexagonal fancy-cut amethyst, silver non-pierce ear clips.
{Gross Weight: 71.5 dwts}



Estimate:
\$1,000 / \$1,500

239
Diamond, Blackened Sterling Silver "Shaker" Necklace.
Featuring numerous diamonds weighing a total of approximately 8.50 cttw., enclosed in a blackened sterling silver "shaker" pendant measuring approximately 40 mm, suspended from a blackened sterling silver chain, forming a 36 inch necklace.
{Gross Weight: 26.3 dwts}



Estimate:
\$500 / \$700

243
Diamond, 18k White Gold Ring.
Featuring twenty-nine full-cut and forty-four tapered baguette-cut diamonds weighing a total of approximately 1.30 cttw., set in an 18k white gold mounting.
{Size: 7, Gross Weight: 6.2 dwts}



Estimate:
\$900 / \$1,200

240
Baroque Cultured Pearl, Diamond, Silver, 18k Yellow Gold Ring.
Featuring one baroque cultured pearl measuring approximately 21.2 x 15.7 mm, accented by four pear shaped rose-cut diamonds and numerous round-cut diamonds, set in a silver, 18k yellow gold mounting.
{Size: 6 3/4, Gross Weight: 5.0 dwts}



Estimate:
\$600 / \$800

244
Diamond, 14k White Gold Ring.
Featuring one round brilliant-cut diamond weighing approximately 0.95 ct., flanked by two round brilliant-cut diamonds weighing a total of approximately 0.50 cttw., accented by eight princess-cut and eight full-cut diamonds weighing a total of approximately 0.60 cttw., set in a 14k white gold mounting.
{Size: 10, Gross Weight: 3.3 dwts}



Estimate:
\$500 / \$700

245
Pair of Diamond, Blackened Sterling Silver, 18k Yellow Gold Earrings.

Each featuring numerous baguette-cut diamonds weighing a total of approximately 1.50 cttw., set in a blackened sterling silver upside down triangular mounting with 18k yellow gold backs and measuring approximately 56 mm in length. Total diamond weight for the pair is approximately 3.00 cttw. {Gross Weight: 8.2 dwts}



Estimate:
\$400 / \$600

249
***Pair of Coral, Diamond, 14k White Gold Earrings.**

Each featuring one pear shaped coral cabochon measuring approximately 13.2 x 7.6 mm, accented by one round-cut diamond weighing approximately 0.02 ct., set in a 14k white gold drop mounting measuring approximately 40 mm in length. {Gross Weight: 2.4 dwts}



Estimate:
\$300 / \$500

246
Opal, Diamond, Blackened Sterling Silver Necklace.

Featuring numerous opal beads ranging in size from approximately 5.2 mm to 4.6 mm, completed by a diamond, blackened sterling silver lobster claw clasp, forming a 16 1/2 inch necklace. {Gross Weight: 7.2 dwts}



Estimate:
\$1,500 / \$2,500

250
Emerald, Diamond, 14k White Gold Tassel Pendant.

Featuring sixteen strands of faceted emerald beads, each terminated by a diamond, 14k white gold cap, suspended from a diamond, 14k white gold open work bell shaped top and bail and measuring approximately 73 mm in length. {Gross Weight: 10.4 dwts}



Estimate:
\$1,000 / \$1,500

247
Diamond, 18k Gold Ring.

Featuring one princess-cut diamond weighing approximately 1.25 ct., accented by seventy-four full-cut diamonds weighing a total of approximately 1.20 cttw., set in an 18k yellow and white gold mounting. {Size: 7 1/4, Gross Weight: 4.7 dwts}



Estimate:
\$3,000 / \$5,000

251
Emerald, Diamond, 18k Gold Ring.

Featuring one emerald-cut emerald weighing approximately 3.61 cts., accented by baguette-cut and full-cut diamonds weighing a total of approximately 1.15 cttw., set in an 18k white gold mounting with yellow gold prongs. Accompanied by a GIA Gemological Report No. 5202365574 dated June 11, 2019 stating "Natural Beryl, Emerald. Clarity Enhanced (F2 - Moderate)" {Size: 7, Gross Weight: 6.1 dwts}



Estimate:
\$600 / \$800

248
***Men's Coral, Diamond, 14k White Gold Saddle Ring.**

Centering one rectangular shaped coral saddle cabochon measuring approximately 16 x 5 mm, surrounded by baguette-cut diamonds weighing a total of approximately 0.55 cttw., set in a 14k white gold mounting. {Size: 9 1/2, Gross Weight: 5.3 dwts}



Estimate:
\$700 / \$900

**252
Pair of Art Deco Mecan Elde
Jadeite Jade, Diamond,
Platinum, 18k White Gold
Earrings.**

Each featuring one carved jadeite jade flower and urn form pendant measuring approximately 30 x 20 x 3.5 mm, accented by nineteen old European-cut, old mine-cut and rose-cut diamonds weighing a total of approximately 0.75 cttw., set in a platinum mounting with 18k white gold backs and measuring approximately 53 mm in length. Total diamond weight for the pair is approximately 1.50 cttw. {Gross Weight: 8.9 dwts}
Note: Evidence of solder and repairs. Backs contain French eagle head hallmark and are signed "Mecan"



Estimate:
\$2,000 / \$3,000

**256
Pair of Diamond, Ruby, 18k
White Gold Earrings.**

Each featuring baguette-cut and full-cut diamonds weighing a total of approximately 1.00 cttw., accented by square-cut rubies weighing a total of approximately 0.95 cttw., set in an 18k white gold drop mounting measuring approximately 36 mm in length. Total diamond weight for the pair is approximately 2.00 cttw. Total ruby weight for the pair is approximately 1.90 cttw. {Gross Weight: 5.6 dwts}



Estimate:
\$500 / \$700

**253
*Coral, Diamond, 14k White
Gold Ring.**

Centering one coral saddle cabochon measuring approximately 16.4 x 5 mm, surrounded by baguette-cut diamonds weighing a total of approximately 0.55 cttw., set in a 14k white gold mounting. {Size: 9, Gross Weight: 4.0 dwts}



Estimate:
\$500 / \$700

**257
Diamond, 18k White Gold
Flower Ring.**

Featuring twenty-four full-cut diamonds weighing a total of approximately 0.50 cttw., set in an 18k white gold mounting designed as a flower. {Size: 6 1/4, Gross Weight: 5.5 dwts}



Estimate:
\$2,500 / \$3,500

**254
Diamond, Ruby, 18k White
Gold Bracelet.**

Featuring eighteen baguette-cut and forty-eight full-cut diamonds weighing a total of approximately 2.20 cttw., accented by French-cut rubies weighing a total of approximately 1.00 cttw., set in an 18k white gold hinged bangle bracelet mounting with an internal diameter of approximately 59 mm. {Gross Weight: 8.4 dwts}



Estimate:
\$1,500 / \$2,500

**258
LeVian Emerald, Diamond, 14k
White Gold Ring.**

Centering one emerald-cut emerald weighing approximately 1.05 ct., accented by thirty-six full-cut diamonds weighing a total of approximately 1.00 cttw., set in a 14k white gold mounting. {Size: 6 3/4, Gross Weight: 4.8 dwts}
Note: Inside shank signed "LeVian"



Estimate:
\$1,500 / \$2,500

**255
Diamond, Ruby, 18k White
Gold Ring.**

Featuring six baguette-cut and sixteen full-cut diamonds weighing a total of approximately 1.45 cttw., accented by square-cut rubies weighing a total of approximately 1.00 cttw., set in an 18k white gold mounting. {Size: 7, Gross Weight: 4.5 dwts}



Estimate:
\$400 / \$600

**259
*Coral, 14k White Gold Ring.**

Featuring two oval shaped coral cabochons measuring approximately 10.8 x 8.5 mm, set in a 14k white gold textured branch motif mounting. {Size: 8, Gross Weight: 3.2 dwts}



Estimate:
\$4,000 / \$6,000

260
Emerald, Diamond, 18k Gold Ring.
Centering one emerald-cut emerald weighing approximately 5.41 cts., accented by tapered baguette-cut and full-cut diamonds weighing a total of approximately 1.05 cttw., set in an 18k white gold mounting with yellow gold prongs. Accompanied by a GIA Gemological Report No. 2203365867 dated June 11, 2019 stating "Natural Beryl, Emerald. Clarity Enhanced (F1 - Minor)." {Size: 7, Gross Weight: 5.2 dwts}



Estimate:
\$400 / \$600

264
***Coral, Diamond, 14k White Gold Ring.**
Featuring one round coral cabochon measuring approximately 11.1 mm, accented by round-cut diamonds weighing a total of approximately 0.03 cttw., set in a 14k white gold mounting. {Size: 6 1/2, Gross Weight: 2.7 dwts}



Estimate:
\$500 / \$700

261
Peridot, Diamond, 14k White Gold Ring.
Centering one oval-cut peridot, flanked by two oval-cut peridots, accented by full-cut diamonds weighing a total of approximately 0.50 cttw., set in a 14k white gold mounting. Total peridot weight for the ring is approximately 3.00 cttw. {Size: 6, Gross Weight: 4.8 dwts}



Estimate:
\$500 / \$700

265
Peridot, Diamond, 14k White Gold Ring.
Centering one oval-cut peridot weighing approximately 2.65 cts., accented by full-cut diamonds weighing a total of approximately 1.00 cttw., set in a 14k white gold mounting. {Size: 8, Gross Weight: 3.3 dwts}



Estimate:
\$1,200 / \$1,600

262
Ruby, Diamond, 18k White Gold Ring.
Centering one oval-cut ruby weighing approximately 1.00 ct., surrounded by full-cut and tapered baguette-cut diamonds weighing a total of approximately 0.50 cttw., set in an 18k white gold mounting. {Size: 6 1/4, Gross Weight: 3.5 dwts}



Estimate:
\$500 / \$700

266
Pair of Peridot, 14k Yellow Gold Earrings.
Each centering one oval-cut peridot, accented by round-cut green quartz, set in a 14k yellow gold mounting measuring approximately 36 mm in length. {Gross Weight: 4.5 dwts}



Estimate:
\$1,200 / \$1,600

263
Green Tourmaline, Diamond, 18k White Gold Ring.
Featuring one emerald-cut green tourmaline weighing approximately 2.70 cts., accented by full-cut diamonds weighing a total of approximately 0.35 cttw., set in an 18k white gold mounting. {Size: 6 1/4, Gross Weight: 3.2 dwts}



Estimate:
\$400 / \$600

267
14k Two-Tone Gold Bracelet.
The 14k yellow and white gold anchor link measuring approximately 11 mm in width, completed by a spring ring clasp, forming a 7 1/4 inch bracelet. {Gross Weight: 12.0 dwts}



Estimate:
\$1,000 / \$1,500

268
Pair of Black Starr & Frost 18k Yellow Gold Ear Clips.
Each 18k yellow gold "endless knot" motif non-pierced ear clip measuring approximately 37 x 24 mm. {Gross Weight: 24.9 dwts} Note: Back signed "BS&F"



269
Peridot, 14k Yellow Gold Ring.
 Featuring one oval-cut peridot weighing approximately 1.80 ct., bezel set in a 14k yellow gold mounting.
 {Size: 6 1/4, Gross Weight: 2.4 dwts}

Estimate:
\$300 / \$500



270
14k Yellow Gold Chain.
 The 14k yellow gold flat figaro link measuring approximately 6 mm in width, completed by a tongue and groove clasp with figure eight safety, forming an 18 inch neck chain.
 {Gross Weight: 30.7 dwts}

Estimate:
\$1,000 / \$1,500



271
Black Diamond, 18k Yellow Gold Pendant Necklace.
 Featuring one round "shaker" pendant with numerous black diamonds weighing a total of approximately 2.15 cttw., suspended from an 18k yellow gold chain, forming an 18 inch necklace.
 {Gross Weight: 6.2 dwts}

Estimate:
\$900 / \$1,200



272
Peridot, Diamond, 14k Yellow Gold Ring.
 Featuring one pear-cut peridot weighing approximately 1.95 ct., accented by fourteen full-cut diamonds weighing a total of approximately 0.05 cttw., set in a 14k yellow gold mounting.
 {Size: 7 1/4, Gross Weight: 2.1 dwts}

Estimate:
\$300 / \$500



273
Diamond, 14k Gold Ring.
 Featuring one round brilliant-cut diamond weighing approximately 0.50 ct., accented by eight full-cut diamonds weighing a total of approximately 0.35 cttw., set in a 14k yellow and white gold mounting.
 {Size: 6 1/4, Gross Weight: 4.4 dwts}

Estimate:
\$400 / \$600



274
French Mid-Century Modern Emerald, 18k Yellow Gold Jewelry Suite.
 Including one uncut emerald crystal, 18k yellow gold brutalist style pendant enhancer measuring approximately 74 x 49 mm, suspended from an 18k yellow gold brutalist style continuous 32 inch neck chain; a matching uncut emerald crystal, 18k yellow gold brutalist style ring, size 7 1/2 together with a matching pair of uncut emerald crystal, 18k yellow gold brutalist style non-pierced ear clips measuring approximately 39 x 24 mm.
 {Gross Weight: 94.1 dwts}

Estimate:
\$3,000 / \$5,000



275
Diamond, 14k Yellow Gold Wedding Ring Set.
 Including one round brilliant-cut diamond weighing approximately 0.60 ct., diamond, 14k yellow gold ring, size 6 1/2 together with a matching diamond, 14k yellow gold wedding band, size 6 1/4.
 {Gross Weight: 5.4 dwts}

Estimate:
\$300 / \$500



276
Pair of Diamond, 14k Yellow Gold Earrings.
 Each featuring nine full-cut diamonds weighing a total of approximately 0.50 cttw., set in a 14k yellow gold j-hoop mounting measuring approximately 22 x 6 mm.
 {Gross Weight: 4.6 dwts}

Estimate:
\$500 / \$700



277
Men's Emerald, Diamond, 14k Yellow Gold Ring.
 Centering one emerald-cut emerald weighing approximately 0.70 ct., accented by thirty-six full-cut diamonds weighing a total of approximately 1.75 cttw., set in a 14k yellow gold mounting.
 {Size: 10 1/4, Gross Weight: 15.9 dwts}

Estimate:
\$800 / \$1,200



Estimate:
\$300 / \$500

278
Diamond, 14k Yellow Gold Flower Pendant Brooch.
Designed as a gerbera daisy, the center featuring one full-cut diamond weighing approximately 0.20 ct., set in a 14k yellow gold pendant brooch measuring approximately 45 x 36 mm.
{Gross Weight: 10.0 dwts}



Estimate:
\$500 / \$700

282
Diamond, 14k Yellow Gold Ring.
Featuring six marquise-cut, seven full-cut and twenty-four baguette-cut diamonds weighing a total of approximately 1.35 cttw., set in a 14k yellow gold mounting.
{Size: 7 1/4, Gross Weight: 3.7 dwts}



Estimate:
\$2,000 / \$3,000

279
Cazzaniga Emerald, Diamond, 18k Gold Leaf Brooch.
Designed as a leaf, featuring three round shaped emerald cabochons ranging in size from approximately 7.7 mm to 5.3 mm, accented by five round brilliant-cut diamonds and nineteen single-cut diamonds weighing a total of approximately 1.00 cttw., set in an 18k yellow and white gold multilayered and textured motif leaf mounting measuring approximately 58 x 35 mm.
{Gross Weight: 20.4 dwts}
Note: Back signed "Cazzaniga Roma"



Estimate:
\$400 / \$600

283
French Glass Drop, 18k Yellow Gold Necklace.
Including five graduated green and pink glass drops ranging in size from approximately 43 x 20 mm to 30 x 10 mm, each capped in an 18k yellow gold brutalist style mounting together with a matching 18k yellow gold brutalist style collar with three bail hooks.
{Gross Weight: 40.6 dwts}
Note: Collar marked with French eagle head.



Estimate:
\$900 / \$1,200

280
Diamond Bead, 14k Yellow Gold Necklace.
Composed of seventy faceted diamond beads weighing a total of approximately 17.50 cttw., linked in 14k yellow gold chain, completed by a lobster claw clasp, forming an 18 inch necklace.
{Gross Weight: 2.6 dwts}



Estimate:
\$400 / \$600

284
Diamond, 10k Gold Ring.
Featuring twenty-one full-cut diamonds weighing a total of approximately 2.75 cttw., accented by tapered baguette-cut diamonds weighing a total of approximately 0.55 cttw., set in a 10k yellow and white gold mounting.
{Size: 7 1/4, Gross Weight: 3.8 dwts}



Estimate:
\$300 / \$500

281
Plique-a-Jour Enamel, Diamond, Multi-Stone, 14k Yellow Gold Butterfly Brooch.
Designed as a butterfly, the wings featuring green and pink plique-a-jour enamel and eight round-cut sapphires weighing a total of approximately 0.13 cttw., the body accented by single-cut diamonds weighing a total of approximately 0.25 cttw., completed by two round-cut tsavorite garnet eyes, set in a 14k yellow gold mounting measuring approximately 29 x 42 mm.
{Gross Weight: 7.7 dwts}



Estimate:
\$800 / \$1,200

285
Jade, Cultured Pearl, Pink Sapphire, 14k Yellow Gold Jewelry Suite.
Including one multicolored oval shaped jade cabochon, freshwater cultured pearl, pink sapphire cabochon, 14k yellow gold leaf motif brooch measuring approximately 86 x 42 mm together with a matching pair of multicolored oval shaped jade cabochon, freshwater cultured pearl, round-cut pink sapphire, 14k yellow gold non-pierced ear clips measuring approximately 38.5 x 22 mm.
{Gross Weight: 29.3 dwts}
Note: Brooch marked "Kevin"



Estimate:
\$400 / \$600

286
***Coral, Diamond, 14k Gold Ring.**
Featuring one round coral bead measuring approximately 7.6 mm, flanked by two full-cut diamonds weighing a total of approximately 0.04 cttw., set in a 14k yellow and white gold mounting.
{Size: 6 3/4, Gross Weight: 2.6 dwts}



Estimate:
\$300 / \$500

290
***Collection of Two Coral, Turquoise, 14k Yellow Gold Pendants.**
Including one oval shaped red coral cabochon measuring approximately 17.2 x 11.3 mm, 14k yellow gold pendant together with a turquoise cabochon, 14k yellow gold pendant measuring approximately 35 x 12 mm.
{Gross Weight: 2.5 dwts}



Estimate:
\$600 / \$800

287
Diamond, 14k Yellow Gold Pendant Necklace.
Featuring one round brilliant-cut diamond weighing approximately 0.50 ct., set in a 14k yellow gold pendant mounting measuring approximately 27x 16 mm, suspended from a 14k yellow gold rope link chain, forming a 20 inch necklace.
{Gross Weight: 8.6 dwts}



Estimate:
\$300 / \$500

291
Men's Jade, 14k Yellow Gold Dragon Ring.
Featuring two pear shaped jadeite jade cabochons, set in a 14k yellow gold double dragon motif bypass ring mounting.
{Size: 14 1/4, Gross Weight: 8.9 dwts}



Estimate:
\$400 / \$600

288
***Coral, Diamond, 14k Yellow Gold Pendant.**
Featuring one egg shaped coral cabochon measuring approximately 13.4 x 9.3 mm, accented by four full-cut diamonds weighing a total of approximately 0.10 cttw., set in a 14k yellow gold mounting.
{Gross Weight: 1.4 dwts}



Estimate:
\$1,500 / \$2,500

292
18k Yellow Gold Neck Chain.
The 18k yellow fluted open oval link measuring approximately 5 mm in width, forming a continuous 30 inch neck chain.
{Gross Weight: 33.0 dwts}



Estimate:
\$500 / \$700

289
Diamond, 18k Gold Ring.
Featuring twenty full-cut diamonds weighing a total of approximately 0.65 cttw., set in an 18k yellow and white gold mounting measuring approximately 17 mm in width.
{Size: 8 1/2, Gross Weight: 8.0 dwts}



Estimate:
\$400 / \$600

293
Jadeite Jade, 18k Yellow Gold Ring.
Featuring one oval shaped jadeite jade cabochon measuring approximately 15.3 x 11.7 mm, set in an 18k yellow gold brutalist style mounting.
{Size: 8 1/4, Gross Weight: 10.2 dwts}



Estimate:
\$400 / \$600

294
***Coral, 14k Yellow Gold Ring.**
Featuring one oval shaped coral cabochon measuring approximately 9.9 x 7.8 mm, set in a 14k yellow gold mounting.
{Size: 7, Gross Weight: 2.6 dwts}



Estimate:
\$500 / \$700

295
Pair of Diamond, 18k Yellow Gold Earrings.
Each featuring one oval shaped rose-cut diamond, accented by five full-cut diamonds, set in an 18k yellow gold drop mounting measuring approximately 20 mm in length. Total diamond weight for the pair is approximately 3.30 cttw. {Gross Weight: 1.0 dwts}



Estimate:
\$500 / \$700

300
Watermelon Tourmaline, 18k Yellow Gold Necklace.
Composed of numerous watermelon tourmaline beads, linked in an 18k yellow gold chain, completed by a spring ring clasp, forming a 58 inch necklace. {Gross Weight: 24.4 dwts}



Estimate:
\$400 / \$600

296
Jadeite Jade, Seed Pearl, 14k Yellow Gold Ring.
Featuring one carved and pierced kidney shaped jadeite jade plaque measuring approximately 31 x 18 mm, surrounded by six seed pearls, set in a 14k yellow gold mounting. {Size: 5 1/4, Gross Weight: 4.4 dwts}



Estimate:
\$300 / \$500

301
Collection of Two Synthetic Ruby, Yellow Gold Flora Fauna Brooches.
Including one synthetic ruby, 18k yellow gold flower brooch measuring approximately 37 x 21 mm together with a synthetic ruby, 14k yellow gold owl brooch measuring approximately 33 x 26 mm. {Gross Weight: 8.5 dwts}



Estimate:
\$500 / \$700

297
Men's 14k Yellow Gold Bracelet.
The 14k yellow Byzantine link measuring approximately 5 mm in width, completed by a tongue and groove clasp with figure eight safety, forming a 9 inch bracelet. {Gross Weight: 14.7 dwts}



Estimate:
\$800 / \$1,200

302
Pink Tourmaline, Diamond, 18k Yellow Gold Ring.
Centering one cushion shaped carved pink tourmaline cabochon weighing approximately 5.40 cts., accented by baguette-cut diamonds weighing a total of approximately 0.50 cttw., set in a 14k yellow gold mounting. {Size: 6 3/4, Gross Weight: 3.2 dwts}



Estimate:
\$600 / \$800

298
***Coral, Diamond, 18k Yellow Gold Flower Ring.**
Designed as a flower, centering six full-cut diamonds weighing a total of approximately 0.50 cttw., surrounded by carved coral petals, set in an 18k yellow gold mounting. {Size: 7 1/2, Gross Weight: 7.7 dwts}



Estimate:
\$1,200 / \$1,600

303
Pink Tourmaline, Diamond, 18k Yellow Gold Pendant.
Featuring one oval-cut pink tourmaline weighing approximately 5.85 cts., accented by full-cut diamonds weighing a total of approximately 1.50 cttw., set in an 18k yellow gold mounting measuring approximately 32 x 19 mm. {Gross Weight: 3.2 dwts}



Estimate:
\$600 / \$800

299
Diamond, Seed Pearl, 14k Yellow Gold Sunburst Brooch.
Centering one old European-cut diamond weighing approximately 0.60 ct., accented by seed pearls, set in a 14k yellow gold sunburst pendant brooch measuring approximately 39 mm. {Gross Weight: 5.1 dwts}



Estimate:
\$1,200 / \$1,600

304
18k Yellow Gold Neck Chain.
The 18k yellow gold loose rope link measuring approximately 3 mm in width, forming a continuous 36 inch neck chain. {Gross Weight: 28.4 dwts}



Estimate:
\$500 / \$700

**305
Pink Tourmaline, Diamond,
14k Rose Gold Ring.**
Centering one oval-cut pink tourmaline weighing approximately 2.50 cts., surrounded by full-cut diamonds weighing a total of approximately 0.60 cttw., set in a 14k rose gold mounting.
{Size: 7, Gross Weight: 2.6 dwts}



Estimate:
\$700 / \$900

**309
Pink Tourmaline, Diamond,
14k Rose Gold Bracelet.**
Featuring one rectangular cushion-cut pink tourmaline weighing approximately 3.80 cts., surrounded by twenty-four full-cut diamonds weighing a total of approximately 0.40 cttw., set in a 14k rose gold hinged bangle bracelet mounting with an internal diameter of approximately 57 mm.
{Gross Weight: 6.0 dwts}



Estimate:
\$3,000 / \$5,000

**306
Diamond, 18k Yellow Gold
Ring.**
Featuring one round brilliant-cut diamond weighing approximately 1.85 ct., accented by sixteen princess-cut and twenty-six tapered baguette-cut diamonds weighing a total of approximately 2.50 cttw., set in an 18k yellow gold mounting.
{Size: 7, Gross Weight: 11.8 dwts}



Estimate:
\$700 / \$900

**310
18k Yellow Gold Neck Chain.**
The 18k yellow gold open oval link measuring approximately 5 mm in width, completed by a spring ring clasp, forming a 21 1/2 inch neck chain.
{Gross Weight: 16.4 dwts}



Estimate:
\$300 / \$500

**307
Diamond, 14k Yellow Gold
Bracelet.**
Featuring fifty-one full-cut diamonds weighing a total of approximately 2.50 cttw., set in a 14k yellow gold articulated mounting, completed by a tongue and groove clasp with fold under safety, forming a 7 inch bracelet.
{Gross Weight: 5.4 dwts}



Estimate:
\$400 / \$600

**311
Amethyst, 18k Yellow Gold
Flower Ring.**
Featuring eleven pear-cut amethysts weighing a total of approximately 5.00 cttw., set in an 18k yellow gold double flower motif mounting.
{Size: 6 1/2, Gross Weight: 6.9 dwts}



Estimate:
\$400 / \$600

**308
Retro Ruby, Diamond, 14k
Rose Gold Ring.**
Featuring seven round-cut rubies, accented by two full-cut diamonds, set in a 14k rose gold barrel shaped mounting.
{Size: 6 1/4, Gross Weight: 3.3 dwts}



Estimate:
\$600 / \$800

**312
Pair of Amethyst, Diamond,
18k Yellow Gold Ear Clips.**
Each featuring one heart-cut amethyst weighing approximately 10.40 cts., accented by seven full-cut diamonds weighing a total of approximately 0.20 cttw., set in an 18k yellow gold non-pierced ear clip mounting measuring approximately 26 x 23 mm. Total amethyst weight for the pair is approximately 20.80 cttw. Total diamond weight for the pair is approximately 0.40 cttw.
{Gross Weight: 16.8 dwts}



Estimate:
\$600 / \$800

313
Amethyst, Diamond, 14k Yellow Gold Ring.
Featuring one pear-cut amethyst weighing approximately 9.70 cts., accented by fifteen full-cut diamonds weighing a total of approximately 0.75 cttw., set in a 14k yellow gold mounting.
{Size: 8 1/2, Gross Weight: 7.4 dwts}



Estimate:
\$400 / \$600

318
Diamond, 14k Yellow Gold Pendant Necklace.
Featuring three round brilliant-cut diamonds weighing a total of approximately 1.00 cttw., set in a 14k yellow gold mounting, suspended from a 14k yellow gold box link chain, forming a 20 inch pendant necklace.
{Gross Weight: 7.4 dwts}



Estimate:
\$600 / \$800

314
Diamond, 14k Yellow Gold Ring.
Featuring one old European-cut diamond weighing approximately 0.77 ct., set in a 14k yellow gold mounting.
{Size: 8 1/2, Gross Weight: 5.7 dwts}



Estimate:
\$400 / \$600

319
Pair of Diamond, 14k Yellow Gold Earrings.
Each featuring three round brilliant-cut diamonds weighing a total of approximately 0.50 cttw., set in a 14k yellow gold stud mounting. Total diamond weight for the pair is approximately 1.00 cttw.
{Gross Weight: 1.8 dwts}



Estimate:
\$700 / \$900

315
Amethyst, Diamond, 14k Yellow Gold Jewelry Suite.
Including one pear-cut amethyst weighing approximately 21.60 cts., diamond, 14k yellow gold ring, size 5 3/4 (with insert) together with one pear-cut amethyst, diamond, 14k yellow gold pendant enhancer.
{Gross Weight: 11.8 dwts}



Estimate:
\$500 / \$700

320
Amethyst, Diamond, 18k Yellow Gold Ring.
Featuring one oval-cut amethyst weighing approximately 12.35 cts., accented by six full-cut diamonds weighing a total of approximately 0.45 cttw., set in an 18k yellow gold mounting.
{Size (with sizer balls): 3 1/2, Gross Weight: 8.3 dwts}



Estimate:
\$800 / \$1,200

316
Jordan 21k Yellow Gold Bracelet.
The 21k yellow gold open round link measuring approximately 8 mm in width, completed by a pin slide clasp, forming an 8 inch bracelet.
{Gross Weight: 20.5 dwts}
Note: Links marks with Jordan hallmark and "AVO"



Estimate:
\$500 / \$700

321
Diamond, 10k Gold Jewelry Suite.
Including one princess-cut and full-cut diamond, 10k yellow and white gold ring, size 7 together with a matching princess-cut and full-cut diamond, 10k yellow and white gold pendant measuring approximately 22 x 17 mm. Total diamond weight for the suite is approximately 2.00 cttw.
{Gross Weight: 4.8 dwts}



Estimate:
\$1,000 / \$1,500

317
Haroldo Burle Marx "Forma Livre" Amethyst, 18k Yellow Gold Ring.
Featuring one carved freeform amethyst measuring approximately 23 x 16.8 mm, set in an 18k yellow gold textured mounting.
{Size: 7, Gross Weight: 10.2 dwts}
Note: Inside shank signed "Burle Marx".



Estimate:
\$300 / \$500

322
Amethyst, Blue Topaz, Diamond, 14k Yellow Gold Ring.
Featuring five fancy-cut amethyst cabochons ranging in size from approximately 8.6 x 5.4 mm to 5.9 x 3.8 mm, accented by eight triangular shaped blue topaz cabochons, further enhanced by twenty full-cut diamonds weighing a total of approximately 0.15 cttw., set in a 14k yellow gold mounting.
{Size: 6 1/2, Gross Weight: 5.1 dwts}



Estimate:
\$800 / \$1,200

326
Diamond, Blue Topaz, 14k Yellow Gold Ring.
Featuring one marquise-cut, one princess-cut, two full-cut and seven single-cut diamonds weighing a total of approximately 1.50 cttw., accented by eight oval-cut blue topaz weighing a total of approximately 3.50 cttw., set in a 14k yellow gold mounting.
{Size: 9 1/4, Gross Weight: 3.9 dwts}



Estimate:
\$500 / \$700

323
Blue Topaz, Diamond, 12k Rose Gold Pendant Necklace.
Centering one pear-cut blue topaz measuring approximately 14.1 x 9.2 mm, accented by numerous rose-cut diamonds, set in a 12k rose gold mounting measuring approximately 66 x 38 mm, suspended from a 14k rose gold chain, forming a 20 inch pendant necklace.
{Gross Weight: 16.8 dwts}



Estimate:
\$800 / \$1,200

327
18k Yellow Gold Floral Brooch.
The 18k yellow gold brooch designed as a marigold flower and measuring approximately 80 x 47 mm.
{Gross Weight: 21.2 dwts}
Note: Evidence of solder on the back, some tips of petals slightly bent.



Estimate:
\$400 / \$600

324
Diamond, 14k Yellow Gold Ring.
Featuring one round brilliant-cut diamond weighing approximately 0.50 ct., accented by ten princess-cut and twenty full-cut diamonds weighing a total of approximately 1.15 cttw., set in a 14k yellow gold mounting.
{Size: 6 1/4, Gross Weight: 6.5 dwts}



Estimate:
\$25,000 / \$35,000

328
Diamond, 18k Gold Ring.
Featuring one oval-cut diamond weighing approximately 5.15 cts., set in an 18k yellow and white gold split shank mounting.
{Size: 6, Gross Weight: 5.2 dwts}



Estimate:
\$300 / \$500

325
14k Yellow Gold Panther Pendant.
The 14k yellow gold slide pendant designed as a panther and measuring approximately 27 x 36 mm.
{Gross Weight: 1.9 dwts}



Estimate:
\$800 / \$1,200

329
Elizabeth Rand Aquamarine, 18k Yellow Gold Ring.
Featuring one oval-cut aquamarine weighing approximately 2.10 cts., bezel set in an 18k yellow gold mounting.
{Size: 6 1/2, Gross Weight: 11.7 dwts}
Note: Inside shank signed "E. Rand"



Estimate:
\$500 / \$700

330
Diamond, 14k Yellow Gold Necklace.
Featuring twenty-four full-cut diamonds weighing a total of approximately 0.20 cttw., set in a 14k yellow gold star motif pendant mounting, suspended from a 14k yellow gold chain, forming an adjustable 16, 17 to 18 inch necklace.
{Gross Weight: 2.6 dwts}



Estimate:
\$300 / \$500

334
Wedgwood Cameo, 14k Yellow Gold Pendant Brooch.
Featuring one oval shaped Wedgwood Rosso Antico cameo depicting the profile of a man and measuring approximately 51 x 42 mm, accented by faceted quartz beads, set in a 14k yellow gold pendant brooch mounting measuring approximately 93 x 88 mm.
{Gross Weight: 25.2 dwts}
Note: Iverlacquered with black/brown polymer and mold no. 1776.



Estimate:
\$400 / \$600

331
Moonstone, Diamond, 14k Yellow Gold Ring.
Featuring one oval shaped moonstone cabochon measuring 9.8 x 7.7 mm, accented by sixty-three single-cut diamonds weighing a total of approximately 1.00 cttw., set in a 14k yellow gold mounting.
{Size: 7, Gross Weight: 7.8 dwts}



Estimate:
\$300 / \$500

335
Tiger's Eye Quartz Cameo, 10k Yellow Gold Ring.
Featuring one tiger's eye quartz cameo measuring approximately 15 x 12 mm, depicting the profile of a soldier, set in a 10k yellow gold mounting.
{Size: 8, Gross Weight: 4.1 dwts}



Estimate:
\$500 / \$700

332
Diamond, Sapphire, Gold Coin, Yellow Gold Jewelry Suite.
Including one lady Liberty head \$1 1853 gold coin, sapphire, diamond, 14k yellow gold pendant measuring approximately 38 x 24 mm together with a men's diamond, 14k yellow gold ring, size 12 1/2.
{Gross Weight: 13.8 dwts}



Estimate:
\$1,500 / \$2,500

336
Diamond, 14k Gold Ring.
Featuring one transitional round-cut diamond weighing approximately 1.44 ct., accented by two full-cut and fifteen single-cut diamonds weighing a total of approximately 0.35 cttw., set in a 14k yellow and white gold mounting.
{Size (with insert): 5 1/2, Gross Weight: 3.8 dwts}



Estimate:
\$2,000 / \$3,000

333
Multi-Stone, Yellow Gold Charm Bracelet with Loose Charms.
The 18k yellow gold fancy open link measuring approximately 6.5 mm in width, completed by a spring ring clasp with safety chain, forming a 7 inch bracelet featuring seventeen multi-stone, 18k, 14k, 10k yellow gold travel charms from around the world in addition to twenty-three multi-stone, 18k, 14k and 9k yellow gold travel charms from around the world.
{Gross Weight: 64.1 dwts}



Estimate:
\$900 / \$1,200

337
Mandarin Spessartine Garnet, Diamond, 18k Yellow Gold Pendant Necklace.
Featuring one oval shaped spessartine garnet cabochon weighing approximately 11.50 cts., surrounded by full-cut diamonds weighing a total of approximately 0.55 cttw., set in an 18k yellow gold mounting, suspended from an 18k yellow gold chain, forming a 16 inch necklace.
{Gross Weight: 3.7 dwts}



Estimate:
\$400 / \$600

338
Pair of Opal, Diamond, 14k Yellow Gold Earrings.
Each featuring one pear shaped opal cabochon measuring approximately 7.2 x 5 mm, surrounded by ten full-cut diamonds weighing a total of approximately 0.30 cttw., set in a 14k yellow gold stud mounting. Total diamond weight for the pair is approximately 0.60 cttw. {Gross Weight: 2.0 dwts}



Estimate:
\$300 / \$500

342
Men's Black Onyx, 10k Yellow Gold Ring.
Featuring one rectangular shaped black onyx tablet measuring approximately 18 x 13 mm, set in a 10k yellow gold mounting. {Size: 11 1/2, Gross Weight: 4.2 dwts}
Note: Onyx chipped at two corners.



Estimate:
\$400 / \$600

339
Diamond, 14k Yellow Gold Ring.
Featuring five full-cut diamonds weighing a total of approximately 0.60 cttw., set in a 14k yellow gold mounting. {Size: 8 1/4, Gross Weight: 4.2 dwts}



Estimate:
\$700 / \$900

343
Tahitian Cultured Pearl, 18k Yellow Gold Bracelet.
Featuring eleven Tahitian cultured pearls ranging in size from approximately 9.9 mm to 8.6 mm, linked in an 18k yellow gold chain, completed by a toggle clasp, forming an 8 1/4 inch bracelet. {Gross Weight: 10.4 dwts}



Estimate:
\$600 / \$800

340
Multi-Stone, 14k Yellow Gold Slide Bracelet.
Composed of twelve various shaped 14k yellow gold slides featuring mother-of-pearl cameo, cultured pearl, chalcedony, garnet, turquoise and synthetic stones, interspersed by 14k yellow gold beads, completed by a tongue and groove clasp with safety chain, forming a 7 1/4 inch bracelet. {Gross Weight: 20.7 dwts}
Note: One gold bead missing, back of one slide engraved "Marine Waggener"



Estimate:
\$300 / \$500

344
Amethyst, Peridot, 18k Yellow Gold Ring.
Featuring one oval-cut amethyst, flanked by two oval-cut peridots, set in an 18k yellow gold abstract style mounting. {Size: 7 1/2, Gross Weight: 4.3 dwts}



Estimate:
\$300 / \$500

341
Collection of Two Pairs of Diamond, Black Onyx, 14k Yellow Gold Earrings.
Including one pair of diamond, 14k yellow gold j-hoop earrings measuring approximately 17 x 4 mm together with a pair of oval shaped black onyx cabochon, 14k yellow gold earrings measuring approximately 20 x 15 mm. {Gross Weight: 7.3 dwts}



Estimate:
\$500 / \$700

345
Diamond, 18k Yellow Gold Ring.
Featuring one shield shaped rose-cut diamond weighing approximately 1.00 ct., set in an 18k yellow gold mounting. {Size: 5 1/2, Gross Weight: 1.0 dwts}



Estimate:
\$300 / \$500

346
French Diamond, Platinum Eternity Band.
Featuring twenty-four full-cut diamonds weighing a total of approximately 1.25 cttw., set in a platinum mounting with gold overlay. {Size: 6, Gross Weight: 2.6 dwts}
Note: French dog head hallmark.



Estimate:
\$800 / \$1,200

347
Cultured Pearl, 14k Yellow Gold Jewelry Suite.
Including one Arthur King cultured pearl, 14k yellow gold ring, size 6 1/2 together with a cultured pearl, 14k yellow gold 7 inch bracelet.
{Gross Weight: 34.5 dwts}
Note: Inside shank signed "King"



Estimate:
\$1,000 / \$1,500

352
Buccellati South Sea Cultured Pearl, 18k Gold Ring.
Featuring one round south sea cultured pearl measuring approximately 13.4 mm, set in an 18k yellow and white gold textured mounting.
{Size: 5 1/2, Gross Weight: 7.3 dwts}
Note: Inside shank signed "Buccellati" with serial no. 236681.



Estimate:
\$300 / \$500

348
Diamond, 14k Gold Ring.
Featuring twenty-eight princess-cut diamonds weighing a total of approximately 1.15 cttw., set in a 14k yellow and white gold mounting.
{Size: 7 1/4, Gross Weight: 3.6 dwts}



Estimate:
\$500 / \$700

353
Sapphire, 18k Yellow Gold Bracelet.
Featuring sixteen oval-cut sapphires weighing a total of approximately 8.60 cttw., bezel set and linked in an 18k yellow gold mounting, completed by a spring ring clasp, forming a 7 inch bracelet.
{Gross Weight: 2.0 dwts}



Estimate:
\$700 / \$900

349
Italian 18k Yellow Gold Brooch.
The 18k yellow gold brooch designed as three fluted crescents and measuring approximately 41 x 40 mm.
{Gross Weight: 15.4 dwts}



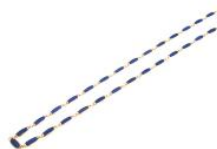
Estimate:
\$600 / \$800

354
Men's Diamond, 14k Gold Ring.
Featuring one round brilliant-cut diamond weighing approximately 0.75 ct., set in a 14k yellow and white gold mounting.
{Size: 9 1/4, Gross Weight: 7.5 dwts}
Note: Possible fracture filling.



Estimate:
\$400 / \$600

350
Men's Star Sapphire, Diamond, 14k Yellow Gold Ring.
Centering one oval shaped star sapphire cabochon measuring approximately 9 x 6.5 mm, flanked by two full-cut diamonds weighing a total of approximately 0.10 cttw., set in a 14k yellow gold mounting.
{Size: 10 3/4, Gross Weight: 3.5 dwts}



Estimate:
\$800 / \$1,200

355
French Lapis Lazuli, 18k Yellow Gold Necklace.
Composed of thirty elongated oval shaped lapis lazuli tablets measuring approximately 16.1 x 7.3 mm, each set in an 18k yellow gold open oval link, forming a continuous 31 inch necklace.
{Gross Weight: 35.9 dwts}



Estimate:
\$700 / \$900

351
French 18k Yellow Gold Watch Chain.
The 18k yellow gold fancy bar link measuring approximately 3.5 mm in width and measuring approximately 17 inches in length.
{Gross Weight: 16.4 dwts}
Note: Evidence of lead solder on one link.



Estimate:
\$600 / \$800

356
Lapis Lazuli, 18k Yellow Gold Ring.
Featuring one cushion shaped lapis lazuli cabochon measuring approximately 16.1 x 13.6 mm, set in an 18k yellow gold textured mounting.
{Size: 8, Gross Weight: 14.0 dwts}



Estimate:
\$300 / \$500

**357
Sapphire, Diamond, 14k Yellow Gold Bracelet.**

Featuring five round-cut sapphires weighing a total of approximately 1.00 cttw., accented by fifty single-cut diamonds weighing a total of approximately 0.25 cttw., set in a 14k yellow gold rosette motif link mounting, completed by a tongue and groove clasp with figure eight safety, forming a 7 1/2 inch bracelet. {Gross Weight: 8.4 dwts}



Estimate:
\$1,500 / \$2,500

**358
Buccellati Diamond, 18k Gold Leaf Ring.**

Featuring fifteen round brilliant-cut diamonds weighing a total of approximately 0.50 cttw., set in an 18k yellow and white gold leaf motif bypass mounting. {Size: 8, Gross Weight: 8.6 dwts} Note: Underside signed "Buccellati"



Estimate:
\$400 / \$600

**370
Group of Twelve Chinese Jade And Stone Pendants And Carving.**

Comprising ten Zoomorphic celadon and russet jade and stone carving and toggles; a large dragon motif round jade toggle and a gray and white jade carving of a rat on the corn pendant. {Approximate height of largest, 3 inches}.



Estimate:
\$300 / \$500

**371
Group of Twelve Chinese Jade and Stone Pendants and Carvings.**

China
Comprising eight carved figural white jade and celadon jade carvings and toggles; a russet and celadon jade double badgers toggle; two white and russet jade fish pendants. {Approximate height of largest, 3 inches}.



Estimate:
\$300 / \$500

**372
Three Chinese Carved Hardstone/Jade Items,**
Including a lavender Jadeit fish group on stand, a plaque and a covered vase. {Approximate height of largest, 8 1/4 inches}.



Estimate:
\$1,000 / \$1,500

**373
Chinese Carved Spinach Jade Brush Washer.**

Carved green and russet spinach jade of irregular form brush washer Bi Xi, with pine decoration. Fitted hardwood stand. {Approximate height, 3 1/2 inches}.



Estimate:
\$300 / \$500

**374
Small Chinese Celadon Jade Cover Vase with Wood Base**

of flattened baluster form, the shoulder and sides flanked by faux silk ribbons handles, all supported on a spreading foot and surmounted by a cover, wood stand. {Approximately 5 inches tall}.



Estimate:
\$800 / \$1,200

**375
Large Chinese Peking Glass Hu Form Vase.**

Imitate in white jade, the large archaistic Hu form decorated with Taotie masks on each side, flanked by Double Dragon Handles. {Approximately 15 inches tall}.



Estimate:
\$800 / \$1,200

**376
Chinese Hand Mirror with jade handle.**

China.
The hand is made from a carved jade dragon form belt buckle, the back of the mirror is centered by a circular carved white jade pendant, with Semi Precious Stone embellishment. {Approximately 7 3/4 inches long}.



Estimate:
\$400 / \$600

**377
Chinese Brass Letter Opener with White Jade Insert Decoration.**
Nephrite flatten oval form pendant carved on both sides with reticulated circular revolving centurial medallion surrounded by two bats and scroll surrounding a double gourd and a articulated carved "shui" longevity symbol in the lower gourd section. the stone of even off white celadon hue. Now mounted into a metal letter opener.
{Approximately 9 inches long of the letter opener, size of the jade is 2 1/2 Inches x 1 1/2 inches}.



Estimate:
\$400 / \$600

**381
Two Chinese Jade and wood carvings.**
Comprising a pale celadon jade ox with a cover vase atop and a carved hardwood immortal riding an elephant and with a double gourd, the wood is with dark patina all over. {The tallest, Approximately 6 1/2 inches height}.



Estimate:
\$300 / \$500

**378
Chinese Carved Archaistic Russet Celadon Jade Stone Spoon**
Of spool form, carved to the handle with a taotie mask and cloud motif, flanked by stylist chiling dragons. The green stone with brownish russet inclusions.
{Approximate length, 10 1/4 inches}.



Estimate:
\$1,000 / \$1,500

**387
Large Amber Color Glass Snuff Bottle.**
China
19th Century.
Of flattened ovoid form, resting on a neatly carved footrim, the glass of rich amber tone, stopper with jade stopper well hollowed.
{Approximate height, 3 1/4 inches}.



Estimate:
\$300 / \$500

**379
Group of Four Jade Bangles.**
Comprising four jade and jadeite bangle bracelet in various size and color.
{The largest 3 inches diameter}.



Estimate:
\$600 / \$800

**388
Unusual Chinese Peking Glass Fruit Tray with Embroidered Basket Base.**
Late 19th Century.
Transparent orange red Peking glass bowl with a large incised floral decorated rim, rest in a handled embroidered with butterflies and flower motif basket base.
{Approximate diameter, 14 inches}.



Estimate:
\$6,000 / \$8,000

**380
An Chinese Archaistic Russet Jade Gong.**
Of standard shape carved with a cylindrical interior shaft surrounded by square outer walls incised in oval and bagua patterns; the stone of brown hue marked by notable patches of russet.
{Approximate height, 8 inches}.



Estimate:
\$400 / \$600

**391
Pair of Chinese Ming Style Pottery Figures on Horses.**
Each rider seated upright upon a lively horse standing foursquare, wearing a peaked hat, their arms raised in vigorous gestures holding a musical instrument, all picked out in green and blue pigments.
{Approximate dimensions of the largest, 12 1/4 x 10 1/2 inches}.
[Condition: Some restoration].



Estimate:
\$300 / \$500

**392
Chinese Export Porcelain Bowl.**
Of Monteith Landscape Panels, flanked by Lion Mack Head Handles, Bearing four character " Zhong Ren Tang Zhi" on the base.
{Approximate dimensions, 6 1/4 x 12 1/4 x 9 3/4 inches}.



Estimate:
\$300 / \$500

393
Chinese Blue Glazed Porcelain Tea pot.
The pear-shaped vassel rising to a waisted neck and an everted rim, set on one side with a curved spout joined to the neck by a double-ring strut, opposite the arched strap handle, the body decorated with gilt outline decoration.
{Approximately 12 1/2 inches height}.
Ago related wear.



Estimate:
\$400 / \$600

397
Large Chinese Canton Export Rose Medallion Bowl.
With figural in court yard scenes decoration.
{Approximate diameter, 11 1/4 inches}.



Estimate:
\$400 / \$600

394
Chinese Export Soup Tureen Light Blue Glaze Bat Handles.
decorated with two landscape panels, bear six characters Xuangtong marks at the recessed base.
{Approximately 6 inches height}.



Estimate:
\$400 / \$600

398
Chinese Large Longquan Celadon Moulded Peony Charger.
China.
Heavily potted, raising from a short foot to a foliated flare rim, The centre incised with peony, bordered with a band of large flowers and foliage, both interior and exterior covered in pale green glaze and a unglazed recessed base.
{Approximately 15 1/4Inches diameter}.



Estimate:
\$400 / \$600

395
Chinese Republic Porcelain Bowl and Vase.
Comprising: First is a bowl decorated with continuously landscape, bearing a four character underglazed red marker's mark to the base; the second is a small lantern form vase decorated with scenery with inscriptions and seal. bearing a two character mark on the recessed base.
{The bowl, approximately 5 inches diameter; the vase, approximately 5 inches height}.



Estimate:
\$600 / \$800

399
Chinese Qing Bai Celadon Porcelain Cup and Stand.
Possibly Song Dynasty. covered in thin clear glazed, the rim decorated with incised floral decorations.
{Approximate diameter, 5 inches}.



Estimate:
\$400 / \$600

396
Four Chinese Porcelain Items,
includes two plates and two bird feeders.
{Approximate diameter of largest plate, 8 1/2 inches}.



Estimate:
\$600 / \$800

400
Chinese Qing Bai Moulded Bowl.
Possibly Song Dynasty.
The circular bowl moulded to the centre with lotus flower design Gilt on the unglazed rim.
{Approximate diameter, 6 1/2 inches}.



401
Chinese Republic 20th Century Famille Rose Chrysanthemum Plate.

Signed "Wang Bu" and inscribed with two red seals "Zhu Xi".
{Approximate diameter, 10 1/2 inches}.

Estimate:
\$600 / \$800



406
Group of Ten Chinese and Korean Celadon Glaze Dishes and Bowls.

In various size and shapes.
{Approximate diameter of largest, 7 1/4 inches}.

Estimate:
\$400 / \$600



402
Two Chinese Jun Yao Type Bowls.

Each Overall light blue glazed rises to mushroom rim, interior with single tapering purple section, unglazed foot.
{Approximate diameter of largest, 7 inches}.

Estimate:
\$300 / \$500



407
Four Chinese Ding Type Bowls.

In various form and size, all covered with thin creamy glaze, one incised with double fish motif.
{Approximate diameter of largest, 6 3/4 inches}.

Estimate:
\$600 / \$800



403
Two Chinese Glazed Vases.

Comprising: first, is a small pear shape celadon glazed with brown splash spots; Second is a Black Glazed Splashed vase.

{The largest, Approximately 11 inches tall.}

Estimate:
\$400 / \$600



408
Group of Five Chinese Ceramic Items,

Comprising: First is a black Jizhou ware black glaze Moon Flask vassle; second, a line stone Buddhas table; third, a celadon tripod censer; fourth, a small celadon glaze dish with foliated rim; fifth, a high footed celadon censer with a later made silver net cover.
{The largest 8 3/4" tall}.

Estimate:
\$400 / \$600



404
Chinese Blue and White Porcelain Covered Jar Lamp.

Late 19th Century. depicting boy on terrace with cover, drilled and now electrified as lamp base.
{Approximate height, 32 inches}.

Estimate:
\$300 / \$500



409
Nine Chinese Famille Rose Porcelain Plaques.

Each plaque is delicately painted with birds and trees, three plaques have an inscription and bearing a signature 'Yu Cheng (1904- 1969)'.
{Approximate dimensions of largest, 12 x 8 inches}.
(Condition: Chipped on the edges).

Estimate:
\$600 / \$900



405
Two Ci Zhou Type Pottery Peony Bowls.

Comprising: The first is a Hexagon deep bowl, the exterior wall painted with floral spray decorations reserve on the cream ground; the second is a irregular form deep bowl with peony design. with pine wood storage box.

{The largest approximately 9 1/4 inches diameters}.

Estimate:
\$600 / \$800



410
Chinese Large Republic Porcelain Vase with Peacock Motif.

Depicting two peacock perch on the rockwork and under the gnarled pine tree. with wood base.
{Approximately 26 inches height}.

Estimate:
\$300 / \$500



411
Chinese Large late 19th Century Baluster Figural Vase.
 Depicting two female warriors on the horse back accompanied by servants. Flanked by gilts styled dragon handles. Inscribed, signed and with seal mark.
 {Approximately 24 inches height}.

Estimate:
\$600 / \$800



416
Blue and White Foliated Dish with Fish Design.
 Painted in under glaze cobalt blue of foliated rim, depicting a fish amid water weeds; the reverse side the foot area unglazed with iron wash brushed.
 {Approximate diameter, 6 1/4 inches}.

Estimate:
\$400 / \$600



412
Chinese Republic Period Famille Rose Enamel Vase.
 Depicting beauty with Shui Lao God of longevity in garden landscape setting. signed and inscribed.
 {Approximate height, 18 inches}.

Estimate:
\$400 / \$600



417
Chinese Blue and White Porcelain Figural Plate.
 Finely painted with applied crackle glaze. Depicting in narrative scenes of a seated bearded man with sword while another bearded man and young attendant looking at him behind the wall under pine tree. The reverse bearing a double circle mark on recessed base.
 {Approximate diameter, 16 inches}.

Estimate:
\$1,200 / \$1,800



413
Chinese Famille Rose Figural jardinières.
 Of tapered rectangular form, raise from four bracket feet, painted with colorful auspicious floral motifs ruyi lappets and figures in landscape panels.
 {Approximate dimensions, 3 x 9 1/2 x 5 3/4 inches}.

Estimate:
\$600 / \$800



418
Two Carved Oval Shape Ruyi Head Plaques.
 The first a large pale green jade ruyi plaque depicting a bearded scholar and a young attendant under pine tree; the second a thick celadon jade plaque depicting lotus and musical instrument.
 {Approximate dimensions of largest, 4 1/5 x 5 inches}.

Estimate:
\$800 / \$1,200



414
Large Chinese Blue Glazed Baluster Vase with Incised Lotus Decorations.
 The slightly tapering cylinder body raised from a short foot to a flaring rim, the neck and shoulder incised with bands of stiff upright lappets and Ruyi head pendants, the body decorated with trailing lotus.
 {Approximately 26 inches height}.

Estimate:
\$400 / \$600



419
Chinese Famille Rose Baluster Vase with Roosters Motif,
 with wood base.
 {Approximate height, 16 1/2 inches}.
 (Condition: Some chips and nicks).

Estimate:
\$400 / \$600



415
Lonquam Celadon Glaze Spittoon, Zhadou.
 The compressed globular body supported on a hollow foot and rising to a wide neck flaring at the rim, covered with bluish gray crackled glaze.
 {Approximate height, 4 1/4 inches}.

Estimate:
\$800 / \$1,200



Estimate:
\$4,000 / \$6,000

**420
Chinese Large Blue and White Lotus Plate**

with Arabic Inscription. The perimeter edge decorated with band of scrolling of lotus; the circular center medallion is painted in underglaze blue with an Arabic inscription contained within a square reserve; the outside body similarly decorated; the recessed base unglazed.
{Approximately 16 1/2 inches diameter}.



Estimate:
\$3,000 / \$5,000

**421
Chinese Famille Rose Enamelled Nine Peach Plate.**

The dish is finely potted rising to a flared mouth rim, exquisitely enamelled on the exterior with two branches in various shades of sepia growing from above the foot, bearing four ripe peaches rendered in shaded tones of bright pink and yellow and flowers in pastel pink, the other side with two orange-red bats in flight. The design continues over the rim onto the interior with four further bats hovering above five peaches shaded from pink to green amidst blossoms and leaves rendered in two tones of green. Yongzheng six-Character Mark within double circles on the recessed base.
{Approximately 11 3/4 inches diameter}.



Estimate:
\$300 / \$500

**422
Chinese Export Creamer.**
Decorated with flower motif.
{Approximate height, 14 1/2 inches}.



Estimate:
\$400 / \$600

**423
Pair of Chinese Iron Red Ground Famille Rose Dishes with Guangxu Mark.**

19th Century.
Each of shallow rounded sides supported on a tapered foot, decorated with gilt "Shou" longevity characters on the interior in iron-red enamel suffused with mottled bluish spots, the rim with an incised ruyi band in blue enamel. Further floral motif on the exterior wall, with a apocryphal ix character underglaze copper red Guangxu mark on the base.
{Approximately 7 1/2 inches diameters}.
(Some Enamel Losses).



Estimate:
\$600 / \$800

**424
Two Chinese Famille Rose Porcelain Jar and Food Container.**

Comprising a three parts high footed covered soup bowl with Famille Rose children at play decorations, bear a four character Tongzhi underglaze copper red mark on the base; and a brush washer with double dragon chasing the flaming pearl decoration, bearing a six character mark on the base.
{Approximately 8 1/2 inches height, the tallest}.



Estimate:
\$600 / \$800

**425
Large Chinese Lobed Blue and White Bowl.**

Depicting continuously scenes of Children at play in the garden setting, bearing a six-Character mark on the recessed base.
{Approximate diameter, 9 3/4 inches}.



Estimate:
\$300 / \$500

**426
Small Yellow Ground Double Dragon Dish.**

Small dish with opposing dragons chasing a pearl within double black circle.
{Approximate diameter, 5 3/4 inches}.



Estimate:
\$300 / \$500

**427
Pair Aubergine And Turquoise
Porcelain Foo Dogs.**

Each foo dog with its head turned and mouth open, one with a front paw raised above a sphere, the other with a front paw raised above a jumping animal, seated on a pierced square integral plinth with scrolling feet.

{Approximate height, 14 inches}.



Estimate:
\$300 / \$500

**431
Chinese Canton Famille Rose
Export Porcelain Sweet Meat
Tray and Trueneen.**

Comprising a nine compartment sweet meat set in a painted floral lacquer box; a trueen with undertray painted with figurals in the interior courtyard scene; a cover tea bowl Gai Wan.

{The largest approximately 14 inches width}.

Age related wear and loss, chip on the cover of the tea bowl.



Estimate:
\$300 / \$500

**428
Chinese Cizhou Type Pottery
Tiger Form Pillow**

modelled as a recumbent tiger vibrantly painted with black stripes on its orange body, its back gently dished to form a concave pillow and painted with a lozenge-shaped panel enclosing a pair of magpie in a lotus pond, the flat base unglazed.

{Approximately 9 inches long}.



Estimate:
\$400 / \$600

**432
Chinese Porcelain Famille
Verte Biscuit Baluster Vase,
Now Electrified.**

The cylindrical body raised from short foot to a flaring rim, flanked by a pair of Foo dog Mack with Mack ring on the shoulder. Finely decorated with four shaped panels of landscape and figural scenes, against classic black floral ground, with a carved hardwood base.

{The height of the vase approximately 15 inches}.



Estimate:
\$400 / \$600

**429
Chinese Garlic Head Pear
Shape Blue and White Vase.**

Possibly Ming Dynasty. depicting figures under willow tree, with a carved hardwood base.

{Approximate height, 9 inches}.

[Condition: Minor chips, damage to stand].



Estimate:
\$600 / \$800

**433
Chinese Canton Polychrome
Enamelled Canton Famille
Rose Porcelain Baluster
Figural Vase.**

Late 19th century.

The shoulders flanked with Foo Dog handles.

{Approximate height, 15 inches}.

Age related wear and loss of enamel, small crack.



Estimate:
\$300 / \$500

**430
Chinese Famille Rose
Porcelain Laughing Buddha
with Five Children.**

Smiling robed figure sits while surrounded by a group of playing youths, fitted wood base. Four-character maker mark on the base. {Approximately 9 1/4 Inches height}.



Estimate:
\$400 / \$600

**434
Chinese Famille Rose
Porcelain Statues of Three
Star Gods.**

Depicting standing figures of Fu, Lu and Shou wearing colorful robes and accompanied by their respective attributes.

{Approximate height of largest, 26 inches}.



435
**A Set of Large Chinese Famille
 Rose Stat Gods.**

19th/20th Century.
 Depicting Fu, Lu and Shou wearing
 colorful robes and accompanied by
 their respective attributes.
 {The tallest approximate 19 1/4
 inches height}.

Estimate:
\$400 / \$600



436
**Chinese Ox Blood Baluster
 Vase and A Carved Rosewood
 Stand.**

The baluster vase with a trumper
 mouth, typically entirely covered in a
 rich ox-blood glaze. together with a
 tall cared rosewood stand with twist
 legs.
 {Approximate height of vase, 22 1/2
 inches}.

Estimate:
\$300 / \$500



437
**Chinese Blue and White
 Figural baluster Vase.**

Molded with a flared rim to the tall
 trumpet neck, the body of inverted
 pear form spreading outward above
 a set-in foot ring,
 Painted in cobalt with pavilion scene
 filled with scholars at visiting scene
 around the neck and the body, the
 recessed base centered with a
 double rings.

Estimate:
\$800 / \$1,200

{Approximate height, 19 inches}.



438
**Chinese Famille Rose Double
 Happiness Baluster Jar,**
 missing lid. Depicting double
 happiness and flowers within the
 bands of ruyi pendants and lappet.
 {Approximate height, 14 inches}.

Estimate:
\$400 / \$600



439
**Longquan Guan-Type Faceted
 Bottle Vase.**

Of globular body with eight facets,
 rising to a tall neck to a flared rim,
 the shoulder and neck decorated
 with raised bands, and supported on
 a splayed foot, covered with an olive
 green glaze suffused with dense
 crackles.
 {Approximate height, 8.5 inches}.
 Provenance: From the collection of
 Captain Edward Pearce, Annapolis,
 Maryland.

Estimate:
\$1,000 / \$1,500



440
**Black Glazed Russet Splashed
 Meiping Vase.**

Of ovoid form with a sloping broad
 shoulder set with a flaring neck and
 an everted mouth rim, covered
 overall in a glossy black glaze
 profusely splashed with vivid russet
 floret medallions, the glaze stopping
 neatly above the foot revealing the
 buff stoneware body.
 {Approximate height, 11 inches}.
 Provenance: From the collection of
 Captain Edward Pearce, Annapolis,
 Maryland.

Estimate:
\$1,500 / \$2,000



441
**Crackled Glazed Ge-Type
 Square Vase.**

Of square section with tapered sides
 rising to an wide everted rim, applied
 all over with a rich pale beige glaze
 suffused with a network of wide iron-
 black crackles joined with delicate
 golden crackles.
 {Approximate height, 7.8 inches}.
 Provenance: From the collection of
 Captain Edward Pearce, Annapolis,
 Maryland.

Estimate:
\$1,500 / \$2,000



442
Rare Ge-Type Brushpot.

Of finely potted cylindrical shape,
 resting on a recessed base, covered
 overall with a creamy glaze suffused
 with iron-black and golden russet
 crackles.
 {Approximate diameter, 4 inches}.
 Provenance: From the collection of
 Captain Edward Pearce, Annapolis,
 Maryland

Estimate:
\$1,000 / \$1,500



Estimate:
\$1,200 / \$1,800

443
Longchuan Guan-Type Floral Dish.
Of shallow flaring sides indented with seven swirling petals, covered all over with a bluish-green glaze suffused with golden crackles, the glaze thinning to mushroom color on the rim, the foot ring unglazed revealing the dark buff body. {Approximate diameter, 7.5 inches}. Provenance: From the collection of Captain Edward Pearce, Annapolis, Maryland.



Estimate:
\$1,500 / \$2,500

448
Wucui Enamelled Double-Gourd Vase.
Of double-gourd form, supported on a slightly recessed foot, gently rising to a slender neck and lipped mouth, the lower bulb decorated in polychrome with four cartouches each enclosing scholar and attendant, all on a diaper ground, the upper bulb painted with two pairs of confronting dragons chasing a flaming pearl over jagged rocks over waves, a six-character reign mark within a rectangular cartouche below the rim. {Approximate height, 15 inches}. Provenance: From the collection of Captain Edward Pearce, Annapolis, Maryland.



Estimate:
\$1,500 / \$2,500

444
Two Molded Ting-Type Conical Bowls.
Each of conical shape, one molded in the interior with a dragon chasing a flaming pearl, the other molded with peony scroll, covered all over with an ivory glaze, the rim bounded in gilt-metal band. {Approximate diameter, 5.7 inches}. Provenance: From the collection of Captain Edward Pearce, Annapolis, Maryland.



Estimate:
\$800 / \$1,200

449
Twelve Porcelain Bird Feeders.
Consisting two rectangular shallow dishes, three with calligraphy inscriptions, two painted with landscape, one painted with a figure, one carved with a boy embracing a jar, a fluted celadon jar with copper red splashes, and two peony decorated small feeders, all attached with loop handles. {Approximate height of largest, 4 inches}. Provenance: From the collection of Captain Edward Pearce, Annapolis, Maryland.



Estimate:
\$1,200 / \$2,000

445
Guan-Type Floral Brush Washer.
Of flat base rising to a flared sides indented into six petals, covered overall with a grayish-blue glaze suffused with delicate golden crackles, the glaze thinning to mushroom color on the rim. {Approximate diameter, 5.1 inches}. Provenance: From the collection of Captain Edward Pearce, Annapolis, Maryland.



Estimate:
\$800 / \$1,200

450
Café Au Lait Glazed Yuhuchuan Vase.
Of elegant pear-form with a tall flaring neck, covered overall save for the interior and base in a lustrous café-au-lait glaze of a rich toffee-brown color, the base inscribed with a six-character Kang-His mark. {Approximate height, 7.7 inches}. Provenance: From the collection of Captain Edward Pearce, Annapolis, Maryland.



Estimate:
\$1,500 / \$2,000

447
Blue and White 'Dragon' Deep Dish.
Of rounded sides rising to the slightly everted rim, well painted on the exterior with two dragons striding through clouds in pursuit of flaming pearls and on the interior with three cloud scrolls encircled by a double-line border below band of classic scroll at the rim, the base inscribed with a six-character Cheng-Te mark. {Approximate diameter 8.7 inches}. Provenance: From the collection of Captain Edward Pearce, Annapolis, Maryland.



Estimate:
\$1,500 / \$2,500

451
Ge-Type Tripod Incense Burner.
Of cylindrical body with flaring sides rising from a flat base and set over three short cabriole legs, covered overall in an even light-beige glaze suffused with an attractive irregular dark crackle permeated by a network of dense golden russet crackle. {Approximate diameter, 3.7 inches}. Provenance: From the collection of Captain Edward Pearce, Annapolis, Maryland.



Estimate:
\$300 / \$400

455
Large Chinese Canton Famille Rose Punch Bowl.
With alternating panels of birds amid flowering bushes and figural courtyard scenes, gilded borders densely painted with butterflies and flowers. {Approximate Height, 5 1/4 and diameter, 14 3/4 inches}. [Condition: Hairline crack, chips].



Estimate:
\$1,200 / \$1,800

452
Crackle Glazed Bottle Vase.
Of globular body rising to a tapering tall neck with flared rim, the neck and shoulder applied with set of raised bands, covered allover with a pale ash glaze suffused with a network of dense iron-gray crackles. {Approximate height, 7.8 inches}. Provenance: From the collection of Captain Edward Pearce, Annapolis, Maryland.



Estimate:
\$300 / \$400

456
Three Chinese Famille Rose Porcelain Scholar's Objects.
Comprising a mountain form ink stick rest, a scroll form paper weight, and a brush pot, decorated with birds and flowers. {Approximate Height of tallest, 3 inches}.



Estimate:
\$400 / \$600

453
Pair of Chinese Small Dishes with Dragon Design.
Bearing Six-Character Qianglong mark. {Approximate diameter, 4 1/4 inches}.



Estimate:
\$300 / \$400

457
Chinese Guan Type Crackle Glazed Tripod Censer
with a flared rim, in a greyish-blue. {Height approximately 3 3/4, diameter 5 inches}.



Estimate:
\$300 / \$400

454
Chinese Export Porcelain Tureen Set.
Chinese Canton export Tureen set including Covered Soup Tureen, a Matching Under tray. Decorated with eagle family insignia. and flowers. {Approximate length, 14 inches (35.56 cm)}.



Estimate:
\$300 / \$500

458
Chinese Molded Green Glazed Tripod Censer.
With globular body raised on three legs, the exterior molded with two mythical beasts, covered overall with green glaze and dragon motif. {Approximate height, 13 1/2 inches}.



Estimate:
\$300 / \$400

459
Chinese Ge Type Gu Form Vase,
with bulbous mid-section that flares into a trumpet-shaped neck with broad rim. {Approximate height, 7 inches}.



460
Two Chinese White Glazed Teapots.
 One with molded white porcelain with two scholars under pines, the other with smooth, high shine surface.
 {Height of tallest approximately 7 3/4 inches}.

Estimate:
\$300 / \$400



465
Blanc De Chine De Hua Statue of Seated Bodhisattva / Sakyamuni,
 The historic Buddha is modelled seated on a lotus throne atop a double lotus base, double Gourd Mark He Cao Zhong on the back.
 {Approximate height, 17 1/2 inches}.

Estimate:
\$600 / \$800



461
Large Chinese Monochrome Blue Glaze Plate.
 The large plate potted with wide flaring sides, dark blue glaze cover both sides, the recessed base remain unglazed.
 {Approximately 25 inches diameter}.

Estimate:
\$800 / \$1,200



466
Group of Three Chinese Famille Rose Porcelain Figures,
 Each wearing colorful robes and holding Ruyi scepters.
 {Approximate height of largest, 9 inches}.

Estimate:
\$300 / \$500



462
Chinese Large Flambe Glaze Porcelain Fish Bowl Plater with Base.
 of fish bowl form, the vessel is cover with rich Flambe purplish red glaze all over.
 {Approximate height, 10 3/4, diameter, 12 inches}.
 [Condition: Some crack and scratches].

Estimate:
\$600 / \$800



467
Chinese Lidded Blue and White Porcelain Teapot, Six Character Marks.
 The pear-shaped body rising to a waisted neck and an everted rim, set on one side with a curved spout, opposite the arched strap handle, the body decorated with phoenix and floral sprays, neck is encircled by bands of upright lappets, the lid with a Foo dog finial. Six characters underglaze Xiang De mark within double circle to the recessed base.
 {Approximately 13 inches height}.

Estimate:
\$400 / \$600



463
Two Enameled Yixing Clay Teapots.
 Comprising two enameled on red clay Yixing tea pots, both with floral designs.
 {Approximate height of largest, 6 3/4 inches}.
 [Condition: Chipped and repaired].

Estimate:
\$600 / \$800



468
Glazed Clay Saicai Figural Teapot.
 with monkey hugging peach with removable head lid with peach stem serving as spout, monkey's tail forms loop handle.
 {Approximate height, 6 1/4 inches}.
 [Condition: Chips].

Estimate:
\$300 / \$500



464
Chinese Guang Type Crackle Glaze Bowl.
 Of rounded sides rising to a foliated everted gilt rim, all supported on an inward tapering foot, covered overall in a light blue crackle glazed.
 {Approximate diameter, 5 inches}.

Estimate:
\$600 / \$800



Estimate:
\$600 / \$800

469
Clair De Lune Glazed Bottle Vase.

The wide ovoid body supported on a tall foot, rising to a flaring neck applied with a pair archaistic dragon handles, the shoulder carved with raised fillet bands, covered with a pale bluish glaze. Apocryphal six characters underglaze blue Yongzhen mark on the recessed base.
{Approximate height, 11 1/2 inches}.



Estimate:
\$500 / \$700

470
Chinese Blue Glaze Baluster Vase with Wooden Cover, with gilt decoration of riverscape and landscape.
{Approximate height, 17 inches}.
Age related wear to the gilt paint.



Estimate:
\$600 / \$800

471
Pair of Famille Rose Gilt Rim Bowls Qiang Long Six Characters Mark. each delicately potted with the deep rounded sides rising from a short foot to a gilt rim, the exterior finely enameled with leafy peony flower, the branch extending over the rim to the interior, issuing further clusters of foliage, the base inscribed with a six-character seal mark in underglaze blue.
{Approximately 4 inches diameters}.



Estimate:
\$2,000 / \$4,000

472
Famille Rose Vase with Handles. The tall ovoid body with a waisted neck flanked by a pair archaistic loop handles, the body finely painted with floral scroll bearing small blossoms, and fruit, with a band of ruyi around the shoulder and lappet encircle the foot, the neck further decorated with bajixiang emblems in blue enamel, Apocryphal six character underglaze blue Qianglong Mark at the recessed base.
{Approximate height, 11 3/4 inches}.



Estimate:
\$2,000 / \$3,000

473
Set of Chinese Four Enameled Porcelain Wall Plaques.

Of vertical rectangular form, each painted in brightly enamels of various colors depicting exotic birds and seasonal flowers, enclosed by bands of flower-heads and scrolling lotuses on a pink enameled ground, the upper left of each plaque inscribed in black ink with a two-line poem, dated jiwel (1979) . with two small seals painted in red; each framed and mounted with a reticulated brass plaque for hanging.
{Approximately 24 x 15 1/2 inches}.



Estimate:
\$400 / \$600

474
Pair of Chinese Blue and White Porcelain Gai Wan Covered Bowls

Comprising a pair of Blue and white porcelain tea bowls with covers, decorated with peony blossoms.
{Approximately 5 inches diameter}



Estimate:
\$800 / \$1,000

475
Large Underglaze red and Blue Vase.

The cylindrical Lantern form vase painted with various butterflies and flowers on the body, the neck is with band of underglaze red and blue diaper pattern decoration and should is with a band of underglaze blue Ruyi pendants, all above a band of upright lappets.
{Approximate dimensions, 16 inches tall}.



Estimate:
\$1,500 / \$2,500

476
A Large Chinese Blue and White Baluster Vase Qiang Long Mark.

Well potted, the slightly compressed globular body rise from a short foot to a flared rim. painted in shades of rich cobalt with wave and stiff-leaf bands around the waisted neck, consecutive bands of scrolling lotus, composite blossoms and waves above a lappet band the recessed base bearing the six-character apocryphal Qianglong mark in cobalt.
{Approximate height, 12 inches}.



Estimate:
\$600 / \$800

477
Rare Square Tube Form Vase with Crackle Interior.
Heavily potted, of square tube Gong form, raise from a short straight round foot, the square body decorate with a blue and white dragon with the head looking back with fierce impression, amidst peony blossoms and leaf scroll, all reserve on dark blue ground. A band of pink and green flower decorate the waisted short neck.
{Approximately height, 11 1/2 inches}.



Estimate:
\$600 / \$800

478
Chinese Enameled Double Gourd Vase Flanked by Gilt Handles.
the rounded body decorated with scrolling pink flowers and flanked by gilt painted handles suspended with faux twisted ribbons, bearing a Qianlong mark on the base.
{Approximately 11 inches height}.



Estimate:
\$600 / \$800

479
Chinese Famille Verte Baluster Vase.
Depicting Deer and Pheasants, Longevity Shui symbols, bearing Qing Kang Xi Six Character Mark to the recessed base.
{Approximate height, 18 inches}.



Estimate:
\$800 / \$1,200

480
Republic Period Famille Rose Enamel Porcelain Baluster Vase.
Depicting figures gathering Under gnarled Pine in landscape setting, bearing four character underglaze red "Jizheng Tang" Mark.
{Approximately 14 1/4 inches height}.



Estimate:
\$800 / \$1,200

481
Pair of Doucai Gu Form Vase Indian Lotus.
Each of tall cylindrical body rising from a splayed foot to a wide foliate rim, decorated with stylized floral scrolls bearing bright blossoms interspersed with bats and auspicious ruyi pendants, bears six-character under glaze blue marks on the recessed base.
{Approximate height, 7 3/4 inches}.



Estimate:
\$800 / \$1,200

482
Chinese Copper-Red Glazed "sang-de-boeuf" Ox blood Bluster Vase.
The elegantly potted vessel covered in a deep red 'ox blood' glaze, Lion Mack Head Handles applied on the shoulders.
{Approximate height, 14 1/2 inches}.



Estimate:
\$400 / \$600

483
Three Chinese Blue and White Porcelain Tea Bowls and Censer.
Comprising a pair of cover tea bowls Gai Wan with peony motif and a double loop handle incense burner.
{Approximately 5 inches tall the tallest}



Estimate:
\$300 / \$500

484
Two Chinese Famille Rose Porcelain Tea Bowls.
Comprising a large compressed form cover tea bowl with dragon chasing the flaming pearl motif, bears a underglaze red six character Guangxu mark on the recessed base and a small scholar's water coupe with floral design.
{Approximately 5 inches diameter}.
Chip on the rim of the cover.



Estimate:
\$400 / \$600

486
Five Chinese Blue and White Porcelain Vases and Bowls.
Comprising a Rouleau vase depicting a scholar and a young attendant in landscape scene, bears a four characters Kangxi mark on the recessed base, and four blue and white bowls and cups in various sizes and decorations. {Approximate height, 9 inches}.



Estimate:
\$600 / \$800

490
Pair of Chinese Republic Figural Rouleau Vase with Warrior Scene.
Finely enamelled with continuous scene with warrior and his attendant praying to the fairy ladies under gnarled pine tree, between bands of intricate diaper, and foliate motifs at the foot and neck, with two red seals. {Approximately 13 1/2 inches height}.



Estimate:
\$600 / \$800

487
Two Chinese Flambe-Glazed Vase and Brush Washer.
The first is a thickly potted rounded ovoid lobed vase with spreading foot to a straight up rim, flanked by a pair of elephant head handles, applied overall with a rich vibrant purplish-green glaze, the base incised with "Shan-Three" number mark, the second is a Flambe-glaze brush washer of rounded form. {The tallest, approximately 13 1/2 inches tall}



Estimate:
\$300 / \$400

496
Two Mix Metal Decorations.
Comprising a Tibetan gilt-bronze Bodhisattva and a seashell with silver mountings. {Height: 8 1/2 inches (21.6 cm) approximately}.



Estimate:
\$400 / \$600

488
Pair of Chinese Porcelain Bowls.
The pair of bowls with deep rounded sides and a slightly flaring rim, decorated to the interior in blue and white with swimming fish in water plants, plain coffee glaze exterior, bear a underglaze blue maker's mark to the recessed base. {Approximately 4 inches diameters}.



Estimate:
\$300 / \$500

497
Chinese Bronze Tripod Censor
of compressed globular with a pair of loop handles. Rich brownish patina. {Approximate diameter, 6 inches}.



Estimate:
\$400 / \$600

489
Chinese Famille Rose Enameled Porcelain Gu Vase.
Of baluster form flaring at neck and foot, the body brightly painted with two dragons chasing flaming pearl admits clouds, between the bands of Ruyi pendants and floral panels. {approximately 14 inches height}.



Estimate:
\$300 / \$500

498
Group of Three Chinese Cloisonne Items Water Pipe and Vases.
Comprising: a pair small cloisonne vases with floral design with wood bases and a cloisonne enameled water pipe. {Water pipe approximately 13 inches tall}.



Estimate:
\$600 / \$800

499
Chinese Cloisonne Gilt Metal Demilune Clock.
The elaborate case combining gilt metal and cloisonné enameled sections worked in pale colors on a soft sky blue enamel ground, the circular pendulum weight also enameled in pale colors with a depiction classic figures in scenery; the clock housing mounted with beveled glass walls and doors, {Approximately 14 inches width}. (wear to gilt, not guaranteed mechanic work on the clock).



Estimate:
\$300 / \$500

503
Large Chinese Cloisonne Brush washer with Dragon motif.
Of compress form, the interior centered with a front facing dragon against the black ground, the exterior well display two dragons chase flaming pearl, below a band of Ruyi pendants, four character "Da Ming Nie Zhi" cast to the recessed base. {Approximately 12 inches diameter}



Estimate:
\$1,000 / \$1,500

500
Pair of Chinese Cloisonne Winged Horses.
Each on the rectangle wood stands. {Approximately 12 inches width}.



Estimate:
\$400 / \$600

504
Chinese Cast Bronze Hanging Incense Burner.
Lidded peach form Incense burner with four character cast to the base suspended from a gnarled tree branch. {Approximate height, 6 1/4 inches}.



Estimate:
\$400 / \$600

501
Bronze Tripod Censer with Dragon Handle,
six characters inscribed "Great Ming De Hua nie zhi". {Approximate height, 6 1/2 inches}.



Estimate:
\$1,000 / \$1,500

505
Large Chinese Bronze Tripod Censer with Handles.
Cast with a cupped rim, a pair of strap handles curving upward from the stepped shoulder and a compressed globular body raised on three curving legs issuing from lion heads, the patina throughout of dark chocolate brown hue. {Approximate 17 3/4 inches height}.



Estimate:
\$400 / \$600

502
Two Chinese Metal containers.
Comprising a carved Cloisonne inro Box with lotus motif and a Pewter Tea Box with floral design, four character Qianglong inscribed to the base. {Approximate dimensions of largest, 3 1/4 inches}. [Condition: Age related loss].



Estimate:
\$1,500 / \$2,500

506
Pair of Chinese Cloisonne Fish Bowls on Pedestals.
{Approximately 32 inches diameters}.



Estimate:
\$300 / \$500

**507
Two Bronze Censers Both with
Da Ming Xuang De Six
Character Mark**

Comprising, the first has a compressed body raised on three conical supports and a pair of "bridge shape" handles rise from the rim, a six-character mark cast in rectangular to the base; the second is a gilt tripod censer with a pair of handles and decorated with dragon motif, six characters mark cast in square to the base.
{The largest, approximately 6 inches diameters}.



Estimate:
\$600 / \$800

**508
Chinese Cloisonne Brush
Washer With Lotus Design.**

Possibly Ming Dynasty. The flaring sides resting on a flat base rising to an everted rim, the interior decorated a ruyi collar surrounded with concentric rings of stylized scroll with bright florets, scrolling lotus and Buddhist emblems, all against a yellow ground, further decorated on the exterior and base with additional shou characters on the side.
{Approximate diameter, 5 1/4 inches}.



Estimate:
\$300 / \$500

**513
Chinese Hardstone Tree.**

The petals consist of rose quartz, agate and pale color jade and other hardstones, with dark green hardstone leaves, set in a tapering rectangular hardstone jardiniere.
{Approximately 9 inches height}.



Estimate:
\$600 / \$800

**514
Large Japanese Bronze
Standing Buddha on Double
Lotus Base.**

{Approximate height, 35 inches}.



Estimate:
\$400 / \$600

**515
Chinese Gilt Painted Bronze
Daoist Immortal Seated Figure.**

The sage heavily cast seated on the top of a beast, wearing an elaborately robe. his beard hanging down left holding a attribute to his chest, right hand resting on his lap.
{Approximate height, 11 1/4 inches}.



Estimate:
\$300 / \$500

**516
Two Chinese Carved Coral
Pendants.**

Comprising a small carved Ruyi scepter on the scroll shape wood base and a cylindrical seal form pendant with a Foo dog atop attached by a gold color chain.
{Approximate length of largest, 2 1/4 inches}.



Estimate:
\$400 / \$600

**517
Chinese Carved Serpentine
Three Tiers Pagoda Incense
Burner and Cover.**

Constructed in three tiers, the body raised on three animal-mask legs and carved with archaic chilong scrolls, flanked by two reticulated scroll handles each suspending a loose ring, the neck also with reticulated square scrolls, surmounted by a three-layered reticulated cylindrical perfumer and the central band set with four chilong each wrapped around a scroll-like embellishment, the cover shaped as a six-peaked tiled roof, all surmounted by carved dragon head finial. The stone of ever celadon green hue.
{Approximate height, 13 inches}.



Estimate:
\$400 / \$600

**518
Large Chinese Hardstone
Flower and Peach Pot on
Yixing Clay Base.**

Consist of agate and other hardstones, with dark green hardstone leaves, set in a Yixing clay planter.
{Approximately 20 1/4 inches height}.



519
Chinese Carved Wood Frog Form Box.
 Frog in crouched position with an ebonized hinged lid to the back, and further ebonized trim to the eyes and mouth.
 {Approximate dimensions, 9 x 17 x 14 inches}.

Estimate:
\$300 / \$500



524
Sino - Tibetan Gilt Statue of Bodhisattva Vajrapani.
 Seated in padmasna on a double lotus base with beaded rims, holding the vajra in right hand and a bell in the left hand, wearing long beaded necklace and belt with jeweled ornaments, armbands, and bracelets, his face with a serene expression flanked by round earrings and surmounted by a crested crown, his hair drawn into a high chignon and topped with lotus bud finial richly gilt overall.
 {Approximately 4 1/2 inches}.

Estimate:
\$1,200 / \$1,800



520
Set of Three Chinese Cast Bronze Brass Star Gods.
 Depicting Fu, Lu and Shou accompanied by their respective attributes, each wear elaborate robes.
 {Approximately 16 inches height}.

Estimate:
\$1,500 / \$2,500



525
Chinese Lacquer Sewing Box,
 with gilded paintings of dragons on paw feet.
 {Approximate dimensions, 6 1/2 x 14 x 10 1/2}.
 With key.

Estimate:
\$300 / \$500



521
Large Carved Bone Standing Statue of GuangYing Goddess of Mercy.
 The Goddess shown standing on the square base with a dragon on her feet, wear a elaborately loose robe , bearing a vase with right hand.
 {Approximately 23 inches height}.

Estimate:
\$400 / \$600



526
Pair of Chinese Hardstone Tree in Painted Enamel Copper Jardinières.
 Early 20th Century.
 of lobed form with figural decoration, each containing a wired tree with hard stone petals.
 {Approximately 9 inches Height}.
 Loss in enamel and stone.

Estimate:
\$300 / \$500



522
Pair of Chinese Swords with Dragon and Phoenix Motif and Stands.
 {Approximate dimensions, 49 inches}.

Estimate:
\$800 / \$1,200



527
Large Chinese Polychrome lacquered Painted and Gilded Temple Shrine Model.
 The temple like structure with upper floor , with a carved wooden goddess, upon a lower terrace.
 Highlighted with gilt accent.
 {Approximate height, 43 inches}.

Estimate:
\$300 / \$500



523
Chinese Carved Cinnabar Box with Landscape Design.
 Chinese rectangular oval conner carved cinnabar box with classic scene of scholars in landscape scenic decorations.
 {Approximately 9 x 8 inches}.

Estimate:
\$400 / \$600



528
Chinese Gilt Archaistic Bronze Tripod Censer
with double handles.
{Approximate height, 10 1/2 inches}.

Estimate:
\$1,000 / \$1,500



529
Chinese Famille Rose Canton Export Covered Box.
Of circular form, heavily decorated to the exterior with various reserves depicting figures, flowers and auspicious objects. Bearing six characters Qianglong Mark on the recessed base.
{Approximate diameter, 10 3/4 inches}.

Estimate:
\$700 / \$900



530
Two Chinese Carved Bamboo Brush Holders.
Both depicting scholars and their attendants in the landscape setting, incised with maker's marks.
{The tallest, approximately 6 1/4 inches tall}.

Estimate:
\$600 / \$800



531
Chinese Bronze Tripod Censer with Daoist Symbols with "Hu Weng Ming" Inscription.
A bronze tripod censer, 19th/20th century In the style of early Ming, of cylinder form supported by three scroll feet, cast with three bands of Daoist and Buddhist symbols, bear a four character marker's mark, possible "Hu Weng Ming Zhi".
{Approximately 4 3/8 inches tall}.

Estimate:
\$400 / \$600



535
Group of Three Finely Carved Boxwood Figures.
Comprising the first is a carved fishman holding a fishing spear and a basket; the second is a Taoist immortal with a double gourd; the third is a fishman with a fish on his back. All with bases.
{Approximate height of largest, 8 1/2 inches}.

Estimate:
\$600 / \$800



536
Group of Three Chinese Carved Polychrome Lacquered Buddha and Immortals.
Comprising the first, a seated Happy Buddha with joyful facial expression on a fitted carved base; the second, a standing figure of a Lohan wearing a loose robe and carrying a gnarled tree branch on his shoulder, the third is Shou lao God of longevity holding a walking cane and standing on a carved wood base.
{Approximate height of the largest, 9 inches}.

Estimate:
\$600 / \$800



540
Large Japanese Meiji Bronze Koro and cover with Eagle, Dragon Design.
Meiji era. The detachable cover with eagle finial, the baluster body decorate with mother and children under gnarled pine tree, raised on dragon base.
{Approximate height, 65 inches}.

Estimate:
\$800 / \$1,200



541
Chinese Export Carved Rosewood Stand with Marble Inset Top.
Export elaborately carved rosewood marble-topped stand, with with foliate rim.
{Approximate height, 23 1/2 inches}.

Estimate:
\$600 / \$800



542
Japanese Six Panel Folding Floor Screen, with Mountainous Battle Scenes.
{Each Panel dimension Approximately 66 x 25 inches}.
Age related discoloration, torn and minor losses.

Estimate:
\$800 / \$1,200



547
Two Japanese Pine Tansu with Parquetry Doors.
{Approximate dimensions, 32 x 28 3/4 x 14 1/4 inches}.

Estimate:
\$300 / \$500



543
Chinese Hardwood Two Door Cabinet in the style of Huanghuali.
Carved Hardwood two-door cabinet, the carved door panels depicting figures and ancient city scenes.

{Approximate dimensions, 22 x 35 3/4 x 20 inches}.

Estimate:
\$400 / \$600



548
Chinese Carved Hardwood Two Door Cabinet.
{Approximate dimensions, 60 1/4 x 36 x 16 inches}.

Estimate:
\$1,000 / \$1,800



544
Chinese Hardwood Coffee Table in the style of Huanghuali.
Chinese export style Low coffee table.
{Approximate dimensions, 16 x 50 x 22 inches}.

Estimate:
\$400 / \$600



549
Chinese Burt wood inlay Hardwood Bench.
19th / 20th Century.
The burlwood panels inlaid bench with geometric brackets apron decorations.
{Approximate dimensions, 18 1/2 x 40 x 13b 1/4 inches}.

Estimate:
\$300 / \$500



545
Four Chinese Hard Stone Embellished figural Lacquer wall Panels.
Of rectangular form, each panel depicting ladies and children in leisure pursue at the garden and pavilion setting.
{Approximate dimensions of each panel, 71 x 17 3/4 inches}.

Estimate:
\$800 / \$1,200



550
Two Chinese Rosewood Square Tables.
{Approximate dimensions, 21 x 24 x 24 inches}.

Estimate:
\$400 / \$600



546
Chinese Pine and Figured Wood Tansu with Brass Fixtures.
{Approximate dimensions, 55 3/4 x 43 x 21 inches}.

Estimate:
\$300 / \$500



551
Pair of Chinese Hong Mu Armchair with Jade Inlay.
Each with wide seat and wrap-around arm rests abobe scroll decorated apron and raised atop scroll legs joined to a solid floor panel, the back splad inset with circular jade plaques.
{Approximatle 35 1/4 inches height}.

Estimate:
\$12,000 / \$18,000



Estimate:
\$600 / \$800

552
Large Chinese Table Screen with Marble Insert.
Of rectangular form, decorated in both sides, the circular marble plaque mounded in a hardwood frame and stand, the wood frame carved and pierced carved with bats, clouds and poems.
{Approximately 31 x 24 1/2 inches}.



Estimate:
\$800 / \$1,200

561
Attributed to Wu Shi Xian (1845-1916) Hanging Scroll.
Ink on paper, "Landscape and river scene" inscribed and with two red seals.



Estimate:
\$400 / \$600

553
Chinese Six Panel Coromandel Folding Screen,
birds and tree decoration.
{Approximate dimensions of each panel, 72 x 16 inches}.



Estimate:
\$1,500 / \$2,500

562
Attributed to Zheng Xie (1693-1765) Zheng Ban Qiao Calligraphy Hanging Scroll.
Hanging scroll, ink on paper; inscribed and signed Banqiao Zheng Xie with two artist seals and two collector's seals.



Estimate:
\$300 / \$500

556
Chinese Embroidery Panels and Piano Covers.
Comprising five various shape embroidered silk panels chair covers and piano cover, depicting flower, birds dragon and inscriptions and lucky symbols.
{Largest 60 inches width}.
{Condition: Age related wear}.



Estimate:
\$1,200 / \$1,500

563
In the Manner of Zhang Daqiang (1899-1983), Ink and color on paper hanging scroll.
Title: " Medicine Master of Riverscape Scene". inscribed and signed with two square red seals.
{Painting size: Approximately 41 1/2 inches x 25 inches}.



Estimate:
\$300 / \$500

557
Seven Late 19th to Early 20th Century Japanese Obis.
Decorated with chrysanthemums and cranes with gilt thread details.
{The largest, 158 inches long}.



Estimate:
\$300 / \$500

564
Chinese Ancestor Portrait of a Noble Lady.
Anonymous (late Qing dynasty). Ink and color on paper, framed, the female noble lady dressed in a Ming style official's bonnet and rank badge.
{Approximate dimensions, 38 1/2 x 30 3/4 inches}.
Age related wear, the frame is damaged.



Estimate:
\$2,000 / \$3,000

560
Attributed to Wu Shixian (1856-1919). Ink on paper Landscape.
Hanging scroll, inscribed, Signed and with two red artist seals.
{Painting size approximately 33 inches x 13 1/4"}.



Estimate:
\$400 / \$600

565
In the Manner of Wu Hufan (1894-1968): Landscape.
Hanging scroll, ink on silk. On upper right inscribed and dated, signed artist's name, with one red seals.
{Approximate dimensions, 44 x 20 1/2 inches}.



566
**In the Manner of Xu Beihong:
 Deer.**
 Hanging scroll, ink and color on paper. Inscribed, dated and with one red seal.
 {Approximate dimensions, 44 x 21 inches}.

**Estimate:
 \$300 / \$400**



567
**In the Manner of Shitao:
 Landscape.**
 Hanging scroll, ink on paper, titled, dated, inscribed, with one seal.
 {Approximate dimensions, 24 1/4 x 14 1/2 inches }.

**Estimate:
 \$2,000 / \$3,000**



568
**Chinese Hanging Scroll
 Calligraphy Running Scrip,
 Attributed to Yu Youren (1879
 -1964).**
 Signed and with one artist red seal.
 {Approximate dimensions, 12 3/4 x 53 inches}.

**Estimate:
 \$1,200 / \$1,800**



569
**Chinese Hanging Scroll Ink
 and Color on Silk,
 (1688-1766).**
 horses under pine, After Giuseppe Castiglione.
 {Approximate dimensions, 15 3/4 x 32 3/4 inches}.

**Estimate:
 \$2,500 / \$3,500**



570
**Chinese Hanging Scroll of
 Landscape,**
 (1894-1968).
 Ink and Color on Silk, Inscribed with Two Red Seals. Attributed to Wu Hufman.
 {Approximate dimensions, 15 x 30 inches}.

**Estimate:
 \$3,000 / \$5,000**



571
**Large Chinese Republic Wood
 Framed Porcelain Panel.**
 Eighteen Lohan design inscribed and with seal.
 {Approximate dimensions, 31 x 52 1/2 inches}.

**Estimate:
 \$800 / \$1,200**



572
Three Sino-Tibetan Thankas.
 20th Century.
 Hanging scroll, distemper on cloth.
 {Largest 29 x 21 inches}.

**Estimate:
 \$400 / \$600**



573
**Two Sino-Tibetan Thankas
 Hanging Scrolls.**
 Two Hanging scroll, both depicting Buddha Sakyamuni in the center, distemper on cloth, inscribed in Tibetan with mantras on the reverse, mounted.
 {The largest approximately 25 inches x 18 1/4 inches}.

**Estimate:
 \$400 / \$600**



574
**Pair of Chinese Framed
 Republic Porcelain Figural
 Plaque Signed Wang Qi.**
 China
 Polychrome enameled Porcelain plaque with carved red lacquer frames. of long rectangular form, depicting the immortal Lui Hai sporting the toad under a willow tree. Inscribed and signed with a underglaze red seal mark.
 {Overall approximately 32 inches x 14 inches}

**Estimate:
 \$800 / \$1,200**



575
Framed Chinese Silk Kesi Woven, Warriors Battle Scene.
 Gold thread grounds with mountainous landscape and warriors on horseback.
 {Tapestry size approximately 34 x 34 inches.
 Frame size approximately 40 x 40 inches}.

Estimate:
\$300 / \$500



579
Chinese Framed Silk Tapestry of Battle Scene.
 Gold thread grounds with warriors on horseback battle scene. framed and glazed.
 {Tapestry size approximately 38 1/2 x 22 inches}.
 Age related discoloration and wear, losses.

Estimate:
\$300 / \$500



576
Large Framed Tibetan Thangka of a Goddess and Lotus Flowers
 depicting Buddha and lotus, late 19th/early 20th Century, watercolor on paper. Framed and glazed.
 {Approximately 64 x 38 1/2 inches}

Estimate:
\$400 / \$600



580
Two Framed Chinese Embroidery Panels.
 Comprising, the first, a framed Dragon and Phoenix roundel, the second is a framed wedding collar in double Ruyi head form.
 {Approximately 21 x 23 inches}.

Estimate:
\$300 / \$500



577
Four Japanese Woodblock Prints by Toshi Yoshida (1911-1995) and Hiroshi Yoshida (1876-1950). Haku Maki, Hashimoto.
 a. Woodblock print by Toshi Yoshida (1911-1995). "Bamboo grove" date: 1954. signed in pencil at the lower left corner and with on red seal. Framed and glazed.
 b. Wood block print by Hiroshi Yoshida (1876-1950). title; Tea house in Azaba Sardem", Signed in pencil at the lower left corner.
 c. An Original Wood Block Print by contemporary Artist, Haku Maki, title: "Emanation-5".
 d. An original Wood block print by Hashimoto, signed and date: 1961. Framed and glazed.
 {The largest frame size approximately 36 inches x 28 inches}.

Estimate:
\$400 / \$600



581
Chinese Carved Hardwood Scroll Form Kang Table.
 {Approximate dimensions, 13 x 38 x 17 inches}.

Estimate:
\$300 / \$500



585
In the Manner of Soong Mei-Ling (1898-2003) Hanging Scroll of Bat and Peaches.
 Ink and color on paper, inscribed and dated 1943, with two square red artist seals.
 {Painting size approximately 45 inches x 14 inches}

Estimate:
\$800 / \$1,200



578
Chinese Framed Tempura by Tai Ling Bluebirds and Peony.
 Chinese painting on paper, depicting bluebird, butterflies bamboo and flowers, signed, with seal marks; framed and glazed.
 {Frame size 31 1/2 x 40 1/4 inches}.

Estimate:
\$400 / \$600



586
Hanging Scroll Signed Kano Chikanobu (Ca.1660-1728).
 Lao Zhi with Donket Signed and Sealed - Japan Ca. 1700.
 {Painting size: Approximately 29 inches x 13 inches}.

Estimate:
\$300 / \$500



587
Attributed to Yanagisawa Gion (1704-1758).
 Mid Edo Period Japan. Framed "Bird and Flowers", inscribed and bearing the signature "Kien Shujin, two seals "Gyokkei" "Kobi".
 {Approximate dimensions, 55 x 36 inches}.

Estimate:
\$4,000 / \$6,000



591
Two Japanese Items Small Tansu and Medicine Cabinet.
 {Approximate dimensions of Tansu, 13 x 16 1/2 x 9 1/2 inches}.

Estimate:
\$300 / \$500



588
In the Manner of Soong Mei-Ling (1898-2003) Hanging Scroll of Bat and Peaches.
 Ink and color on paper, inscribed and dated 1943, with two square red artist seals.
 {Painting size approximately 45 inches x 14 inches}

Estimate:
\$800 / \$1,200



592
Large Japan Imari Gilt Bowl.
 with seal mark on base.
 {Approximate diameter, 12 3/4 inches}.
 {Condition: Small chip on rim}.

Estimate:
\$600 / \$800



589
Pair of Japanese Kaga Silver Inlaid Iron Stirrups, Abumi, Edo Period.
 Each decorated with an overall pattern of leafy flowering peony branches executed in silver inlay with incised accents, interior red lacquer; together with and a Whip.
 {Stirrups, Approximately 11 inches long}

Estimate:
\$400 / \$600



593
Four Urushibara Mokuchu (1888-1953) (Yoshijiro) Japanese Wood Block Prints "Horses".
 Circa - 1930's, Signed in pencil and marked.
 {Approximately 14" x 11"}.

Estimate:
\$400 / \$600



590
Three Japanese Bronze and Brass Censers.
 Comprising: the first a footed and with tow loop handles rectangular form, the bronze censer with castled archaistic motif ; the second, a globular censer flanked by two round handles; the third, a cylindrical vassal. The last two are accompanied with wood bases. All with rich patina.
 {Approximate height of largest, 10 inches}.

Estimate:
\$400 / \$600



594
Four Japanese Woodblock Prints of Various Flowers.
 Unsigned with transparent artist's water marks.
 {Approximately 19 inches x 13 inches}.

Estimate:
\$400 / \$600



595
Four Japanese Woodblock Prints Ukiyo-e (1797-1858). 歌川 廣重.
 Each print was title and signed.
 a. "zhuangye White Rain".
 b. "Travlers surprised by the sudden rain on bridge".
 c. Three Big Bridges.
 d. "Scenery on the river".
 {The largest approximately 14 inches x 10 inches}

Estimate:
\$400 / \$600



596
Hiroshi Yoshida (1876-1950)
Woodblock River and Street
Scene.

Title, signed in pencil.
{Approximately 14 inches x 10
inches}.

Estimate:
\$300 / \$500



597
Japanese Pine Tansu Chest
with Omate Iron Fixtures.
{dimension: Apporximately 33 x 37
1/2 x 17 inches}

Estimate:
\$300 / \$500



598
Group of Three Korean
Celadon Vessels,
including an egg shaped Cup, two
with floral design boxes.
{Approximate diameter of largest, 5
1/2 inches}.

Estimate:
\$400 / \$600

Artist Index

Artist	Lot #	Artist	Lot #
Amenoff, Gregory	196	Keith, William	169
American School	153, 154	Kelly, John Melville	168
Askenazy, Mischa	162	Kenna, Michael	199
Bartlett, Charles William	148	Klee, Paul (style Of)	176, 177
Bell, Cecil Crosley	156	Kleitsch, Joseph	166
Bierk, David	202	Kloss, Gene.....	163
Bluemner, Oscar.....	164	Laycox, Jack	200
Brackett, Don	155	Lebasque, Henri	140
Brannan, Sophie Marston	161	Lefebvre, Jules Joseph (style Of)	149
Bufano, Beniamino	204, 206, 207	Magritte, Rene (style Of)	178
Buffet, Bernard	180	Max, Peter	201
Chan, Shu-park	191	Morgan, Mary Deneale	160
Chimot, Édouard	146	Neiman, Leroy	203, 210
Cocteau, Jean (attributed To)	174	Neuman, Johan Heinrich	150
Colin, Paul	181	Nierman, Leonardo	209
Continental School	152	Oliveira, Nathan	211
Dali, Salvador	175	Onogi, Manabu	185
De Lempicka, Tamara (after)	170	Pages, Jules Eugène	167
Dine, Jim	192	Phippen, George	158
European School	143, 145, 151	Picasso, Pablo (after).....	173
Fantin- Latour, Henri	141	Ray, Man	205
Fausett, William Dean	157	Remington, Frederic (after)	159
Fuchs, Bernard	208	Scharf, William	194
Hagerup, Nels	165	Sinclair, Irving	193
Hagiwara, Hideo	189	Tajima, Hiroyuki	188, 190
Hamaguchi, Yozo	184	Van Der Pol, Louis	144
Heine, Gero	198	Van Rijn, Rembrandt (after)	142
Henry, Michel	179	Warhol, Andy	195
Hoshi, Joichi	186, 187	Whittington, Lawrence.....	197
Hungarian School	172	Zamazal, Jaroslav Veris.....	147
Jacoulet, Paul	182, 183	Zeytline, Leon	171

Michaan's Auctions - Terms and Conditions of Sale

STANDARD CONDITIONS OF SALE

These Conditions of Sale are binding on all purchasers at Auction. Please read carefully.

By registering to bid at auction, in person, or through an agent, by absentee bid, or telephone or any other means including the Internet and e-mail, you agree to be bound by these Conditions of Sale (and changes made as noted below.) All property and every lot for sale in our catalogue is offered subject to the following terms and conditions, along with any changes that may be published or announced prior to or during a sale by Michaan's Auctions. (MA). The terms "MA" "us," "we," or "our" as used herein all refer to Michaan's Auctions. Unless otherwise indicated in the catalogue or at time of sale, MA acts at all times solely as the agent for the seller. All sales shall be deemed to occur in California regardless whether by telephone, mail or through the Internet or the physical location of the buyer.

DEFINITIONS

Hammer price: The highest bid received for a lot upon the fall of the auctioneer's hammer.

Buyer's premium: The amount paid by the buyer as a percentage of the hammer price and in addition thereto.

Purchase price: The aggregate of the hammer, buyer's premium and applicable taxes or other fees, if any, as may be required by law.

Reserve: The minimum price at which the lot may be sold.

Buyer: The person or entity who buys property at auction or private sale.

Consignor: The seller, or the seller's representative, on behalf of whom we are selling the Property.

Lot: The single item or group of items offered by us for sale. Property: The item or items comprising an auction lot being offered for sale.

BUYER'S PREMIUM

The Buyer shall pay a Buyer's Premium per lot which shall be retained by MA as follows:

Twenty percent (20%) of the first \$250,000.00 of the bid price, fourteen percent (14%) of the amount of the bid price above \$250,000.00 up to and including \$1,000,000.00, and twelve percent (12%) of the amount of the bid price over \$1,000,000.00. If you choose to pay by credit card (Visa, Mastercard or Discover only) or any other form of payment, the buyer's premium is twenty-three percent (23%) of the first \$250,000.00 of the bid price, seventeen percent (17%) of the amount of the bid price above \$250,000.00 up to and including \$1,000,000.00, and fourteen percent (14%) of the amount of the bid price over \$1,000,000.00. Internet Buyer's Premium is twenty-seven percent (27%) of the first \$250,000.00 of the bid price and twenty-two percent (22%) of the amount of the bid price over \$250,000.00.

TERMS OF SALE

a. The Purchase of and Payment for Property

The sale of a lot shall be to the highest bidder as determined by the auctioneer, in accord with these Conditions of Sale. Title to the lot shall pass with the fall of the Auctioneer's hammer. Buyer shall pay the Purchase price, as defined above, and such other fees as may be due, in full, within seven (7) days of the auction sale. Sale is not final and property will not be released to Buyer until good funds for all amounts due, are received by MA. Payment may be made (i) in cash, (ii) by wire transfer (additional \$25 fee), (iii) by money order or other guaranteed funds, or (iv) by personal check (when buyer's credit is approved). No lot shall be transferred by Buyer to another person until the sale is final. In the event of partial payment for any lot or lots we shall apply payments, in our discretion, to the lot or lots we select. The Buyer grants MA a security interest in the purchased Property, and we may retain as collateral any property purchased and any funds in our possession, to secure a

Buyer's obligations to us, if any. We retain the rights of a secured party under the California Commercial Code. All fees, taxes, premiums or other sums due and not paid pursuant to this paragraph shall bear interest at 1.5 % per month from the 8th day following the sale to the date paid in full.

b. Collection of Property

Upon transfer of title, Buyer assumes full responsibility, including risk of loss and damage, for the Property. Purchased property shall be removed at Buyer's expense within fifteen (15) days after the sale becomes final. Property not removed shall be subject to a service fee of \$50, and a storage fee, if retained by MA, of 1% of the purchase price per month. MA may also, in its sole discretion, elect to place the Property in a public storage facility at the Buyer's sole risk, responsibility and expense.

c. Liability for delivery of property

If, for any reason whatsoever, we are unable to deliver the purchased Property to the Buyer, MA shall be liable to the Buyer only for the Purchase price paid by the Buyer and in no event shall we be liable for incidental or consequential damages, including, but not limited to, business interruption or loss of profit.

THE AUCTION PROCEDURE

a. Registration

Bidders must register in advance to bid at auction. (a) If by mail or on the Internet please comply with, sign and send back the requisite form or absentee bid. (b) To telephone bid, Bidders must complete, sign and fax a copy of the Telephone Bid Registration Form, which is available only by calling MA. Telephone lines are limited, and available on a first-come, first-serve basis. Registration to bid by telephone must be completed by 5 p.m. the day prior to the auction. (c) When intending to bid in person, pre register at the desk and obtain a bidding paddle. The auctioneer may refuse to recognize any person not registered and not having a paddle number. MA reserves the right at its sole discretion, to refuse anyone the right to register and participate at an auction.

Registration to bid by telephone must be completed by 5 p.m. the day prior to the auction. (c) When intending to bid in person, pre register at the desk and obtain a bidding paddle. The auctioneer may refuse to recognize any person not registered and not having a paddle number. MA reserves the right at its sole discretion, to refuse anyone the right to register and participate at an auction.

b. Announcements

We may, at the commencement of, or during the Auction, announce changes in or modifications to the Conditions of Sale or descriptions of Property.

c. Absentee Bids

For a Buyer's convenience, absentee bids will be accepted, when properly executed and submitted in a timely manner. However, we neither accept any responsibility to an absentee bidder, nor any liability whatsoever for a failure to execute the absentee bid for any reason. In the event that identical multiple absentee bids are the highest bids received for the same lot then the earliest received of the competing absentee bids shall prevail at that bid amount.

d. Auctioneer's Discretion

The Auctioneer has the absolute discretion to 1) pass a lot or withdraw it from sale at any time prior to its actual sale; 2) refuse to recognize any bidder; 3) refuse to recognize any bid; 4) resolve any dispute between bidders or resolve any doubtful bid by deciding who is the successful bidder or nullifying the auction of the lot and reoffering it for sale. The Auctioneer's decision is binding as to disputes arising at auction. If a dispute arises post sale, our records of the sale shall be conclusive. Both the Auctioneer and MA shall be without any liability whatsoever resulting from the exercise of the discretion referred to herein.

e. Reserves

All Property is offered for sale subject to a Reserve unless otherwise stated by us at time of sale. MA may protect the Reserve by an initial bid or continued bidding on behalf of the consignors. Any bids by MA staff after the Reserve is met shall be made only on behalf of registered bidders. Neither the consignors nor an agent or representative of the consignors is allowed to bid on their own property.

DISCLAIMER OF WARRANTIES

Except for warranty of title, neither we nor the Consignor make any warranties, guarantees or representation, express or implied, with respect to the Property, including, but not necessarily limited to, any implied warranty of "fitness for purpose" or "merchantability." Any and all statements and descriptions in any catalogue or elsewhere by MA, relating to age, attribution, authenticity, size, genuineness, provenance, historical relevance or significance, physical condition, importance, quality, quantity, rarity, period, culture, source or origin, are presented as statements of qualified opinion only. MA's disclaimer of liability covers information contained in catalogues, and all other printed material published by us, including condition reports. Buyers assume the responsibility to inspect the Property and make their own decision as to the nature, quality and value of the Property. Neither MA nor the Consignor make any warranty or representation with regard to the existence of or the transfer of intellectual property rights, except and to such extent as may, from time to time, be explicitly stated. No employee of MA is authorized to nor shall make any warranty or representation on MA's behalf, except as stated in the catalog or in any written addendum.

ESTIMATES OF VALUE

All estimates of value as published in our Catalogues or elsewhere are statements of qualified opinion as to the range of the price a willing buyer might pay for the Property at auction. The actual price paid at auction or subsequently, may vary substantially from the estimates. MA shall not be liable for any such differential.

BUYER'S DEFAULT

If a Buyer fails to pay for purchased Property, or otherwise does not comply with these Conditions of Sale, the Buyer shall be in default. In addition to all remedies available in law, to MA and to the Consignor, the Buyer shall be liable for the entire Purchase price. Additionally, at our option, we may either cancel the sale and retain all payments made by Buyer as well as retain any and all Property of Buyer in our possession as security against payment of the sums in default, or we may re-offer the Property for sale, at auction or privately, without reserve. Buyer shall be liable to us and the Consignor for the additional fees, commissions and costs on both sales (including handling, storage and court costs and attorney's fees) resulting from the cancellation or resale of the Property and in the event of resale, any deficiency which may result.

RESCISSION

The sole and exclusive remedy, available only to the original buyer, is the limited right of rescission set forth herein. MA will cancel the sale of Property if the original buyer establishes to our satisfaction that there has been a breach of the Consignor's warranty of title, or that the identification of Authorship* of the Property as set forth in **Bold** Type Heading is not substantially correct, based on a fair reading of the Catalogue (as may be amended by posted or announced changes.) **IN ALL INSTANCES, YOU MUST GIVE WRITTEN NOTICE TO US WITHIN 30 DAYS OF THE SALE OF THE PROPERTY, SETTING FORTH THE BASIS FOR YOUR CLAIM AND, AT YOUR SOLE EXPENSE AND RISK, RETURN THE PROPERTY IN QUESTION TO MA WITHIN SEVEN (7) DAYS AFTER NOTICE IS GIVEN AND IN THE SAME CONDITION AS WHEN SOLD.** Upon review of the claim and the property, if we are satisfied with the bases for your claim and the property is in the same condition it was in when sold, MA will rescind the sale and return to you the Purchase price, unless we have already remitted funds to the Consignor. In that event, and at MA's sole discretion, MA shall either pay you as provided above, or shall pay you only

that portion of the Purchase price retained by us (the Seller's commission, the buyer's premium and any sales taxes collected) and on your behalf make demand on the Consignor for the balance and upon receipt of the funds remit same to you. Should the Consignor refuse to return the funds to you or to MA, we shall disclose the Consignor's identity and assign to you any and all rights MA may have against the Consignor. Any and all liability MA may have as agent for the Consignor shall thereupon terminate.

BUYER EXPRESSLY UNDERSTANDS AND AGREES THAT MA SHALL HAVE NO OTHER LIABILITY TO THE BUYER EXCEPT FOR THE RETURN OF THE PURCHASE PRICE AND THAT IN NO EVENT SHALL MA BE LIABLE FOR ANY DAMAGES, INCLUDING BUT NOT LIMITED TO INCIDENTAL, CONSEQUENTIAL OR COMPENSATORY DAMAGES OR LOSS OF PROFIT OR BUSINESS OPPORTUNITY.

*Authorship refers to the maker or creator of the Property, and the period, social culture, and origin of the Property as stated in the **Bold** Type Heading for a given lot in our catalogue. It does not refer to the descriptions which may be contained in the information below the **Bold** Type Heading.

MISCELLANEOUS

a. Modification: No modification or amendment of the Conditions of Sale shall bind MA unless contained in a writing signed by MA, except as may be posted or published as noted above or verbally announced at time of sale.

b. Severability: If, for any reason, any part of the Conditions of Sale is held to be invalid or unenforceable, the remaining portion shall be valid and enforceable.

c. Successors and Assigns: The Conditions of Sale shall be binding on all the heirs and assigns of the Buyers and bidders and inure to the benefit of MA's successors and assigns.

d. Jurisdiction, Venue, Choice of Law: Dispute resolution shall occur in Alameda County, California, USA. The provisions of the Conditions of Sale will be construed and disputes determined by application of California Law, without regard to conflicts of law.

e. Notice, Service of Process: Buyers agree to accept all notices and service of process relating to dispute resolution at the address provided by Buyer on any registration forms required to be executed as a condition of bidding in our auction.

f. Dispute Resolution: All disputes and claims arising out of or relating to events and actions covered herein, brought by or against us, shall be resolved by mediation or binding arbitration in accord with the procedures set forth below. This provision does not apply to claims brought by the Buyer directly against the Consignor, including, but not limited to any action brought pursuant to the rescission provisions noted above.

OPTIONAL PROVISIONS

Shipping, insurance packaging and handling of purchased lots is at the risk and expense of the purchaser. MA shall not, under any circumstances, be liable for the loss, theft or damage to property, including, but not limited to selection of shipper, the acts or omissions of any shipper or the acts or omissions occurring in packing for shipment. It is the purchaser's responsibility to obtain a shipping quote for any lot being offered, from an outside shipper, prior to the auction date. Post sale determination of shipping costs does not constitute grounds for cancellation of any purchase made at auction. Purchasers are advised that large and fragile items can be expensive.

MEDIATION AND ARBITRATION PROCEDURES

(a) Within 30 days of written notice that there is a dispute, the parties or their representatives may meet at a time and place mutually agreed upon, to mediate their differences. If the parties agree, a mediator acceptable to the parties shall be selected. The mediator shall be

an attorney, trained in mediation techniques and familiar with commercial law and the California Uniform Commercial Code (UCC). The mediator's fees shall be shared equally and paid by all parties. At the mediation, all parties shall have actual authority to settle the dispute. Any statements made during, and all aspects of, the mediation process shall be kept confidential and shall not be admissible in any subsequent arbitration or judicial proceeding. Any resolution shall be confidential. (b) If the parties cannot agree to mediation, or if mediation does not resolve the dispute, or in any event no longer than 60 days after receipt of written notice referred to above, the parties shall submit the dispute for binding arbitration before a single neutral arbitrator jointly selected, or absent agreement, selected from the panel of Arbitrators provided by the American Arbitration Association (AAA). If, within 15 days, the parties cannot agree on an arbitrator, then AAA shall select one (1) person as arbitrator in accord with AAA rules. The arbitrator shall be an attorney, experienced in commercial law and with the UCC. The arbitrator shall be required to follow the law in making his award, and the award shall be in writing and shall set forth findings of fact and legal conclusions. (c) The arbitration shall occur within 60 days of the selection of the arbitrator, in either Oakland or San Francisco, California, unless the parties agree to another location. Discovery and the procedure for the Arbitration shall, unless otherwise agreed to by the parties, follow the procedures and policies of AAA governing commercial arbitration, subject however to the following modifications:

1. All arbitration proceedings shall be confidential. None of the parties nor the arbitrator, may disclose the existence, content or results of the arbitration without the written consent of all parties.
2. The parties shall attempt to agree on the issues to be arbitrated, or identify the disputed issues in writing no later than 45 days prior to arbitration.
3. Unless otherwise agreed by the parties, discovery, if any, shall be limited as follows: (a) Requests for no more than 10 clearly identified categories of documents, to be provided to the requesting party within 14 days of written request therefore; (b) Depositions: No more than two (2) per party, provided however, the deposition(s) are to be completed within one (1) day; (c) Compliance with the above shall be enforced by the arbitrator in accord with California law.
4. Each party shall have no longer than eight (8) hours to present its position. The entire hearing before the arbitrator shall not take longer than three (3) consecutive days, unless all parties agree otherwise in writing. The award shall be made in writing no more than 30 days following the end of the proceeding. Judgment upon the award rendered by the arbitrator may be entered by any court having jurisdiction thereof. Each party shall bear its own attorney's fees and costs in connection with the proceedings and shall share equally the fees and expenses of the arbitrator.

This auction is being conducted in compliance with section 2328 of the Commercial Code, section 535 of the Penal Code, and provisions of the California Civil Code.

Bonded pursuant to California Civil Code sec 1812.600 et seq. Bond # 71393954

JEWELRY SOLD AT MICHAAN'S AUCTIONS:

It is the responsibility of the bidder to examine carefully any item(s) of potential interest.

For all the jewelry sold here at Michaan's Auctions the following applies:

All gemstone weights are approximate.

We are aware of the many types of treatments and/or enhancements used today on diamonds and colored stones. The purpose is to improve their appearance i.e. color and/or clarity. Techniques like heat treatments, color diffusion, irradiated, HTHP, oiling, resin, bleaching,

dying and impregnation are just a few techniques known today. Some treatments combined. Some treatments are not detectable using standard gemological procedures. Not all treatments are permanent. Prospective buyers are therefore reminded that unless otherwise noted in the description(s), it must be assumed that some form of enhancement may have been used.

Regarding laboratories certification: The certifications mentioned in the descriptions only reflect the opinions of the laboratory. From one laboratory to another they do differ on the degrees of grading and/or treatments. And if a stone has a certificate from a laboratory we cannot guarantee this grading.

Watches must be examined carefully. Although we do attempt to mention in our descriptions significant defects, needed repairs, absent stones and the like, we do not guarantee the accuracy or operation of any watch function.

Detailed condition reports are available for most pieces. These reports contain more information than the catalogue descriptions. Images shown may appear smaller or larger than actual size.

ASIAN ARTS DISCLAIMER:

We are aware of the many types of treatments and/or enhancements used today on jade. The purpose is to improve their appearance, i.e. color and/or clarity. Techniques like bleaching, dying and impregnation are just a few techniques known today. These treatments are not detectable using standard gemological procedures. Not all are permanent. Prospective buyers are therefore reminded that unless otherwise noted in the description(s),¹ it must be assumed that some form of enhancement may have been used.

¹ Accompanied by a laboratory report stating natural, no evidence of treatment.

PROPERTY MADE FROM OR CONTAINING MATERIALS FROM ENDANGERED OR PROTECTED SPECIES

Property that contains any percentage of material made or potentially made from endangered and/or other protected species of wildlife are, as a courtesy, marked in the catalogue with the symbol " * ". Michaan's Auctions does not accept any responsibility or liability for failing to mark such lots. Such material includes, but is not limited to, ivory, tortoise shell, crocodile skin, whalebone, rhinoceros horn, some species of coral and certain woods.

Prospective buyers are advised that several countries completely prohibit importation of property made, all or in part, of proscribed materials. Some countries require special permits, such as a CITES permit, from the relevant regulating authority in the countries of exportation and importation as well. Potential buyers intending to import the property into another country should be familiar with the relevant customs laws and regulations prior to bidding on property containing wildlife material. Regulations may vary as the U.S. prohibits importation of articles containing material(s) from species it has designated endangered or threatened if the articles are less than 100 years old.

It shall be the potential buyer's sole responsibility to research and satisfy the requirements of any laws and regulations that apply to the import and export of property as described in the aforementioned paragraphs. Prospective buyers must also note that the inability or delay in obtaining permits, licenses or other permissions to import or export property containing potentially regulated wildlife material will not constitute a basis for rescission or cancellation of the sale of said property or the delay in payment of purchased items in accordance with the Conditions of Sale.

NO GUARANTEE OF AUTHENTICITY FOR CHINESE PAINTINGS

Currently, scholarship in the field of Chinese paintings precludes the ability to provide unqualified statements or opinions as to Authorship or date of execution. The terms for RESCISSION in the Conditions of Sale, (as set out on our internet site and in our catalogues) does not apply to Chinese paintings. However, if within twenty (20) days of the sale of any such lot, the original purchaser provides Michaan's with both written notice that the lot is a forgery, and within seven (7) days after written notice, said purchaser returns the lot to us in the same condition as when sold and demonstrates to our satisfaction that the lot is a forgery, Michaan's will rescind the sale and refund the purchase price received to the original purchaser. "Forgery" for the purposes of this provision, is defined as a work created with the intent to deceive.

Definitions of Authorship:

This is to qualify the relationship between the object and the named person in the catalogue. The following conventions for attribution are used by Michaan's Auctions:

Giovanni Bellini: In our opinion a work by the artist. When the artist's forename(s) is not known, a series of asterisks, followed by the surname of the artist, whether preceded by an initial or not, indicates that in our opinion the work is by the artists named.

Attributed to Giovanni Bellini: In our opinion probably a work by the artist but less certainty as to authorship is expressed than in the preceding category.

Studio of Giovanni Bellini: In our opinion a work by an unknown hand in the studio of the artist, which may or may not have been executed under the artist's direction.

Circle of Giovanni Bellini: In our opinion a work by an as yet unidentified by distinct hand, closely associated with the named artist but not necessarily his pupil.

Style of; follower of Giovanni Bellini: In our opinion a work by a painter working in the artist's style, contemporary or near contemporary, but not necessarily his pupil.

Manner of Giovanni Bellini: In our opinion a work in the style of the artist and of a later date.

after Giovanni Bellini: In our opinion a copy of a known work of the artist.

The term **signed** and/or **dated** and/or **inscribed** means that in our opinion the signature and/or date and/or inscription are from the hand of the artist.

The term **bears a signature** and/or **date** and/or **inscription** means that in our opinion the signature and/or date and/or inscription have been added by another hand.

"bearing signature..." / "bearing date..." / "bearing inscription..." In our opinion the signature/date/inscription is by a hand other than that of the artist.

Typical Headings:

FURNITURE

George III Mahogany Chest of Drawers

Third Quarter 18th Century

This heading, with date included, means that the piece is, in our opinion, of the period indicated with no major alterations or restorations.

George III Mahogany Chest of Drawers

This heading, without the inclusion of the date, indicates that, in our opinion, the piece, while basically of the period, has undergone significant restoration and alteration.

George III Style Mahogany Chest of Drawers

The inclusion of the word "style" in the heading indicates that, in our opinion, the piece was made as an intentional reproduction of an earlier style.

BRONZES

Antoine-Louis Barye

This heading indicates that the casting and patination were done by the artist or with his direct authorization or supervision.

Cast After a Model by Antoine-Louis Barye

This heading indicates that the casting and patination of a known Barye model were done by another, i.e., artisans at the F. Barbedienne or other foundry.

CERAMICS

Meissen Porcelain Cup and Saucer

Late 19th Century

This states that the cup and saucer were made at the Meissen factory in the last quarter of the 19th Century.

Meissen Porcelain Cup and a Saucer

Late 19th Century

Again, this states that the cup and saucer were made at the Meissen factory in the last quarter of the 19th Century, but it also indicates that the cup and saucer may not have been "born" together.

Meissen Porcelain Cup and Saucer

Circa 1900

This states that the cup and saucer are of Meissen style, and although of the date specified, not necessarily made at the Meissen factory.

'Meissen' Porcelain Cup and a Saucer

19th Century

This states that the cup and saucer are of Meissen style, and although of the date specified, not necessarily made at the Meissen factory.

Meissen Porcelain Cup and Saucer

The title without a specific date simply states that the pieces were made at the Meissen factory but does not specify when, implying that their age is questionable.

Bid Increments

Minimum Value	Maximum Value	Expected Bid Increment
from US \$ 0	to US \$ 49	US \$ 5
from US \$ 50	to US \$ 199	US \$ 10
from US \$ 200	to US \$ 499	US \$ 25
from US \$ 500	to US \$ 999	US \$ 50
from US \$ 1,000	to US \$ 1,999	US \$ 100
from US \$ 2,000	to US \$ 4,999	US \$ 250
from US \$ 5,000	to US \$ 9,999	US \$ 500
from US \$ 10,000	to US \$ 19,999	US \$ 1,000
from US \$ 20,000	and above	US \$ 2,500



Michaan's Auctions
2751 Todd Street
Alameda, CA 94501
(800) 380-9822
or (510) 740-0220
www.michaans.com
info@michaans.com